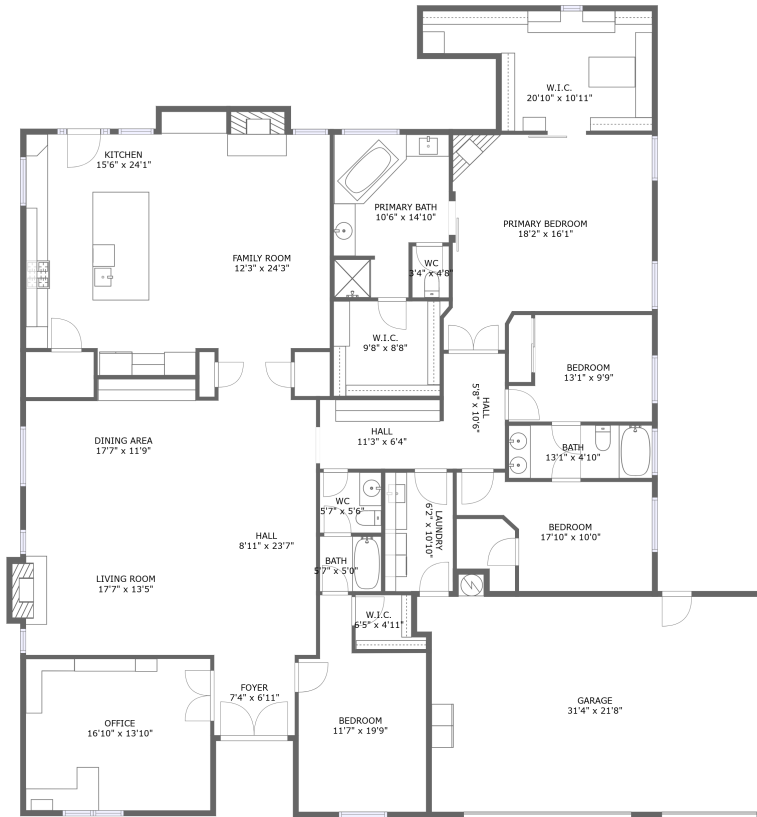


4217 San Giovanni Court, Lancaster, Los Angeles County, California, United States, 93536

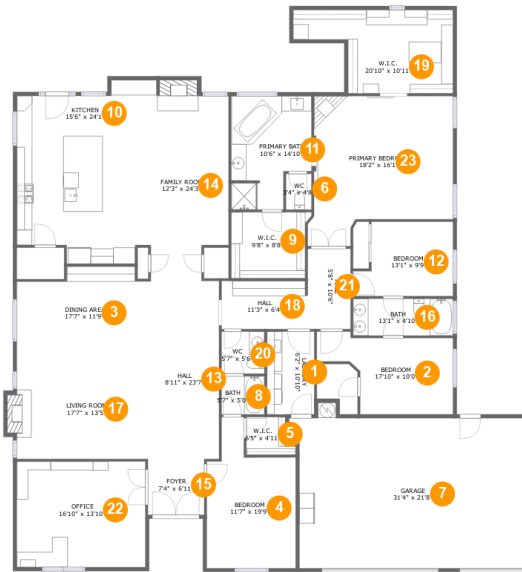


Property Summary

 **1** garages  **4** bedrooms  **3** bathrooms  **0** half baths

 **1** floors  **3,400** Gross Living Area sqft  **4,036** total sqft

4217 San Giovanni Court, Lancaster, Los Angeles County, California, United States, 93536



Room Dimensions

Floor 1

Total sqft: 4036

Living area: 3400

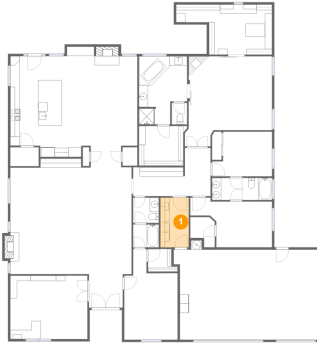
| # | Room name | Dimensions | Area (sqft) | Counted as Living Area |
|----|--------------|----------------|-------------|------------------------|
| 1 | Laundry | 6'2" x 10'10" | 67 sq. ft | Yes |
| 2 | Bedroom | 17'10" x 10'0" | 143 sq. ft | Yes |
| 3 | Dining Area | 17'7" x 11'9" | 189 sq. ft | Yes |
| 4 | Bedroom | 11'7" x 19'9" | 183 sq. ft | Yes |
| 5 | W.i.c. | 6'5" x 4'11" | 27 sq. ft | Yes |
| 6 | Wc | 3'4" x 4'8" | 16 sq. ft | Yes |
| 7 | Garage | 31'4" x 21'8" | 598 sq. ft | No |
| 8 | Bath | 5'7" x 5'0" | 28 sq. ft | Yes |
| 9 | W.i.c. | 9'8" x 8'8" | 85 sq. ft | Yes |
| 10 | Kitchen | 15'6" x 24'1" | 331 sq. ft | Yes |
| 11 | Primary Bath | 10'6" x 14'10" | 137 sq. ft | Yes |

4217 San Giovanni Court, Lancaster, Los Angeles County, California, United States, 93536

| # | Room name | Dimensions | Area (sqft) | Counted as Living Area |
|----|-----------------|-----------------|-------------|------------------------|
| 12 | Bedroom | 13'1" x 9'9" | 112 sq. ft | Yes |
| 13 | Hall | 8'11" x 23'7" | 210 sq. ft | Yes |
| 14 | Family Room | 12'3" x 24'3" | 286 sq. ft | Yes |
| 15 | Foyer | 7'4" x 6'11" | 51 sq. ft | Yes |
| 16 | Bath | 13'1" x 4'10" | 63 sq. ft | Yes |
| 17 | Living Room | 17'7" x 13'5" | 243 sq. ft | Yes |
| 18 | Hall | 11'3" x 6'4" | 70 sq. ft | Yes |
| 19 | W.i.c. | 20'10" x 10'11" | 178 sq. ft | Yes |
| 20 | Wc | 5'7" x 5'6" | 31 sq. ft | Yes |
| 21 | Hall | 5'8" x 10'6" | 59 sq. ft | Yes |
| 22 | Office | 16'10" x 13'10" | 233 sq. ft | Yes |
| 23 | Primary Bedroom | 18'2" x 16'1" | 312 sq. ft | Yes |

4217 San Giovanni Court, Lancaster, Los Angeles County, California, United States, 93536

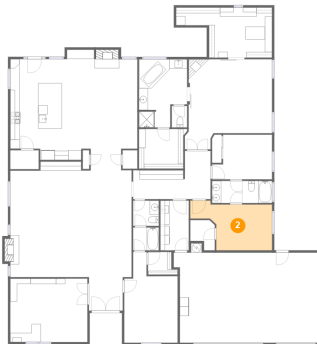
1 Floor 1 - Laundry



Dimensions: 6'2" x 10'10"
Area: 67 sq. ft
Counted as Living Area:
Yes

Heated: Yes
Finished: Yes
Enclosed: Yes
Contiguous:
Yes
Permitted: Yes
Wet Space: No
Addition: No
Conversion: No

2 Floor 1 - Bedroom

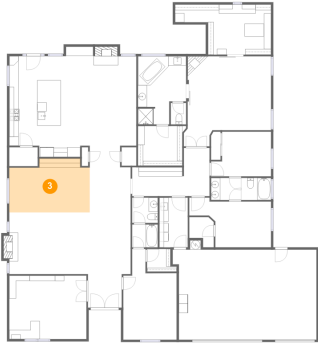


Dimensions: 17'10" x 10'0"
Area: 143 sq. ft
Counted as Living Area:
Yes

Heated: Yes
Finished: Yes
Enclosed: Yes
Contiguous:
Yes
Permitted: Yes
Wet Space: No
Addition: No
Conversion: No

4217 San Giovanni Court, Lancaster, Los Angeles County, California, United States, 93536

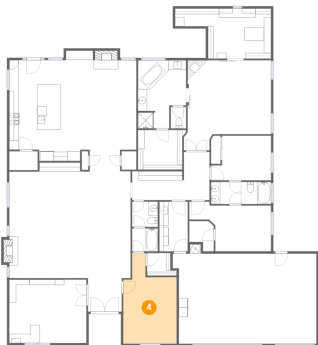
3 Floor 1 - Dining Area



Dimensions: 17'7" x 11'9"
Area: 189 sq. ft
Counted as Living Area:
Yes

Heated: Yes
Finished: Yes
Enclosed: Yes
Contiguous:
Yes
Permitted: Yes
Wet Space: No
Addition: No
Conversion: No

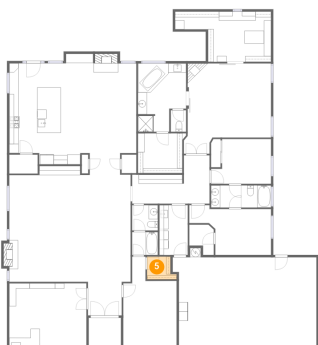
4 Floor 1 - Bedroom



Dimensions: 11'7" x 19'9"
Area: 183 sq. ft
Counted as Living Area:
Yes

Heated: Yes
Finished: Yes
Enclosed: Yes
Contiguous:
Yes
Permitted: Yes
Wet Space: No
Addition: No
Conversion: No

5 Floor 1 - W.i.c.

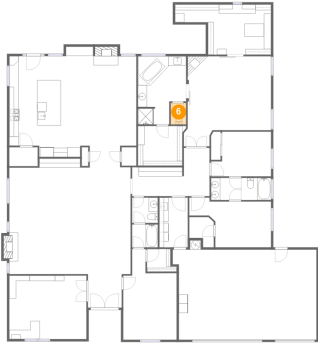


Dimensions: 6'5" x 4'11"
Area: 27 sq. ft
Counted as Living Area:
Yes

Heated: Yes
Finished: Yes
Enclosed: Yes
Contiguous:
Yes
Permitted: Yes
Wet Space: No
Addition: No
Conversion: No

4217 San Giovanni Court, Lancaster, Los Angeles County, California, United States, 93536

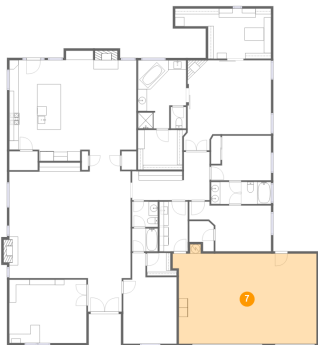
6 Floor 1 - Wc



Dimensions: 3'4" x 4'8"
Area: 16 sq. ft
Counted as Living Area:
Yes

Heated: Yes
Finished: Yes
Enclosed: Yes
Contiguous:
Yes
Permitted: Yes
Wet Space: Yes
Addition: No
Conversion: No

7 Floor 1 - Garage



Dimensions: 31'4" x 21'8"
Area: 598 sq. ft
Counted as Living Area: No

Heated: No
Finished: No
Enclosed: Yes
Contiguous: Yes
Permitted: Yes
Wet Space: No
Addition: No
Conversion: No

8 Floor 1 - Bath



Dimensions: 5'7" x 5'0"
Area: 28 sq. ft
Counted as Living Area:
Yes

Heated: Yes
Finished: Yes
Enclosed: Yes
Contiguous:
Yes
Permitted: Yes
Wet Space: Yes
Addition: No
Conversion: No

4217 San Giovanni Court, Lancaster, Los Angeles County, California, United States, 93536

9 Floor 1 - W.i.c.



Dimensions: 9'8" x 8'8"
Area: 85 sq. ft
Counted as Living Area:
Yes

Heated: Yes
Finished: Yes
Enclosed: Yes
Contiguous:
Yes
Permitted: Yes
Wet Space: No
Addition: No
Conversion: No

10 Floor 1 - Kitchen



Dimensions: 15'6" x 24'1"
Area: 331 sq. ft
Counted as Living Area:
Yes

Heated: Yes
Finished: Yes
Enclosed: Yes
Contiguous:
Yes
Permitted: Yes
Wet Space: No
Addition: No
Conversion: No

11 Floor 1 - Primary Bath

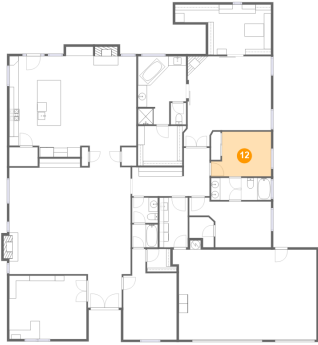


Dimensions: 10'6" x 14'10"
Area: 137 sq. ft
Counted as Living Area:
Yes

Heated: Yes
Finished: Yes
Enclosed: Yes
Contiguous:
Yes
Permitted: Yes
Wet Space: Yes
Addition: No
Conversion: No

4217 San Giovanni Court, Lancaster, Los Angeles County, California, United States, 93536

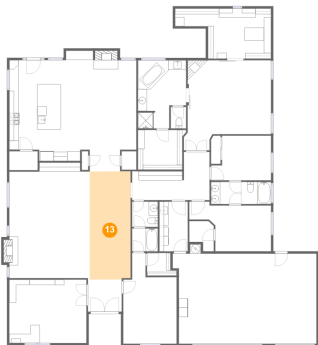
12 Floor 1 - Bedroom



Dimensions: 13'1" x 9'9"
Area: 112 sq. ft
Counted as Living Area:
Yes

Heated: Yes
Finished: Yes
Enclosed: Yes
Contiguous:
Yes
Permitted: Yes
Wet Space: No
Addition: No
Conversion: No

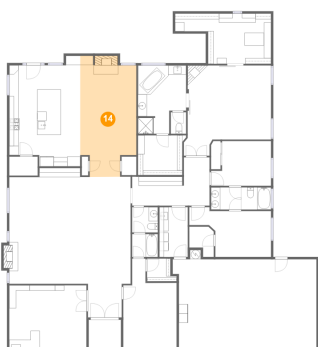
13 Floor 1 - Hall



Dimensions: 8'11" x 23'7"
Area: 210 sq. ft
Counted as Living Area:
Yes

Heated: Yes
Finished: Yes
Enclosed: Yes
Contiguous:
Yes
Permitted: Yes
Wet Space: No
Addition: No
Conversion: No

14 Floor 1 - Family Room



Dimensions: 12'3" x 24'3"
Area: 286 sq. ft
Counted as Living Area:
Yes

Heated: Yes
Finished: Yes
Enclosed: Yes
Contiguous:
Yes
Permitted: Yes
Wet Space: No
Addition: No
Conversion: No

4217 San Giovanni Court, Lancaster, Los Angeles County, California, United States, 93536

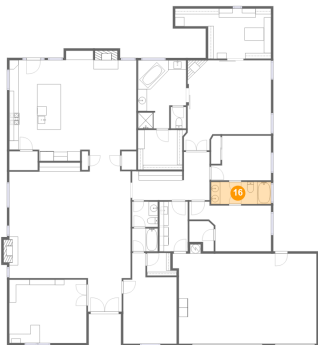
15 Floor 1 - Foyer



Dimensions: 7'4" x 6'11"
Area: 51 sq. ft
Counted as Living Area:
Yes

Heated: Yes
Finished: Yes
Enclosed: Yes
Contiguous:
Yes
Permitted: Yes
Wet Space: No
Addition: No
Conversion: No

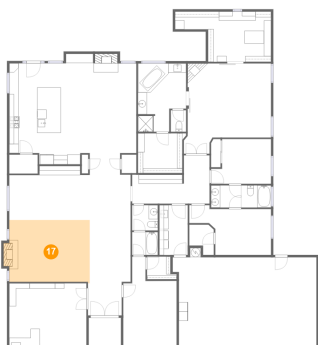
16 Floor 1 - Bath



Dimensions: 13'1" x 4'10"
Area: 63 sq. ft
Counted as Living Area:
Yes

Heated: Yes
Finished: Yes
Enclosed: Yes
Contiguous:
Yes
Permitted: Yes
Wet Space: Yes
Addition: No
Conversion: No

17 Floor 1 - Living Room

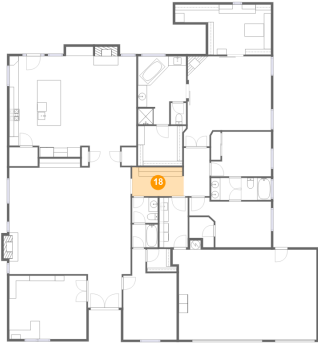


Dimensions: 17'7" x 13'5"
Area: 243 sq. ft
Counted as Living Area:
Yes

Heated: Yes
Finished: Yes
Enclosed: Yes
Contiguous:
Yes
Permitted: Yes
Wet Space: No
Addition: No
Conversion: No

4217 San Giovanni Court, Lancaster, Los Angeles County, California, United States, 93536

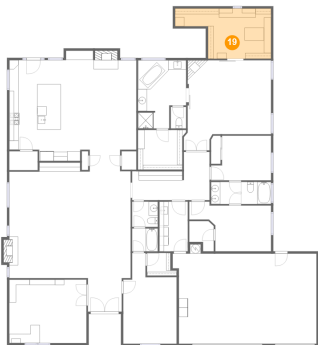
18 Floor 1 - Hall



Dimensions: 11'3" x 6'4"
Area: 70 sq. ft
Counted as Living Area:
Yes

Heated: Yes
Finished: Yes
Enclosed: Yes
Contiguous:
Yes
Permitted: Yes
Wet Space: No
Addition: No
Conversion: No

19 Floor 1 - W.i.c.



Dimensions: 20'10" x 10'11"
Area: 178 sq. ft
Counted as Living Area:
Yes

Heated: Yes
Finished: Yes
Enclosed: Yes
Contiguous:
Yes
Permitted: Yes
Wet Space: No
Addition: No
Conversion: No

20 Floor 1 - Wc

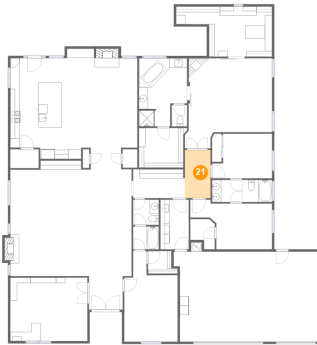


Dimensions: 5'7" x 5'6"
Area: 31 sq. ft
Counted as Living Area:
Yes

Heated: Yes
Finished: Yes
Enclosed: Yes
Contiguous:
Yes
Permitted: Yes
Wet Space: Yes
Addition: No
Conversion: No

4217 San Giovanni Court, Lancaster, Los Angeles County, California, United States, 93536

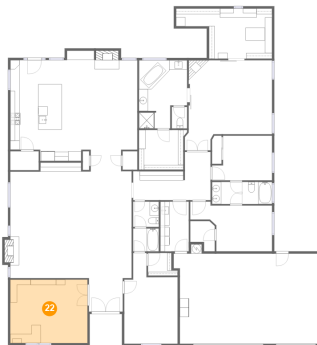
21 Floor 1 - Hall



Dimensions: 5'8" x 10'6"
Area: 59 sq. ft
Counted as Living Area:
Yes

Heated: Yes
Finished: Yes
Enclosed: Yes
Contiguous:
Yes
Permitted: Yes
Wet Space: No
Addition: No
Conversion: No

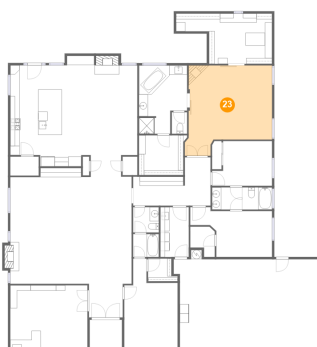
22 Floor 1 - Office



Dimensions: 16'10" x 13'10"
Area: 233 sq. ft
Counted as Living Area:
Yes

Heated: Yes
Finished: Yes
Enclosed: Yes
Contiguous:
Yes
Permitted: Yes
Wet Space: No
Addition: No
Conversion: No

23 Floor 1 - Primary Bedroom



Dimensions: 18'2" x 16'1"
Area: 312 sq. ft
Counted as Living Area:
Yes

Heated: Yes
Finished: Yes
Enclosed: Yes
Contiguous:
Yes
Permitted: Yes
Wet Space: No
Addition: No
Conversion: No