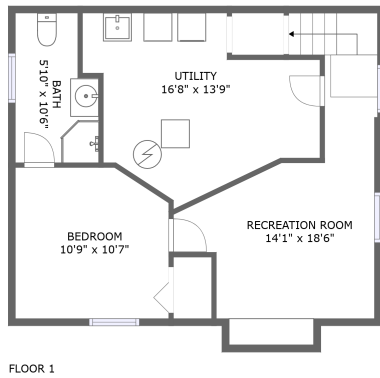
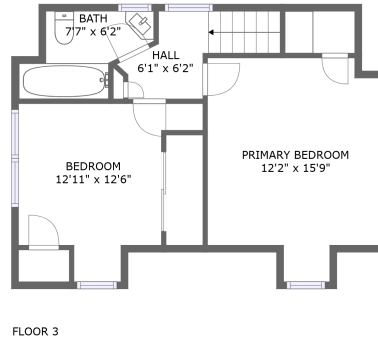



# 7227 Southeast Hawthorne Boulevard, Mt. Tabor, Portland, Multnomah County, Oregon, United States,



## Property summary


 **0** Garages

 **3** Bedrooms

 **2** Bathrooms

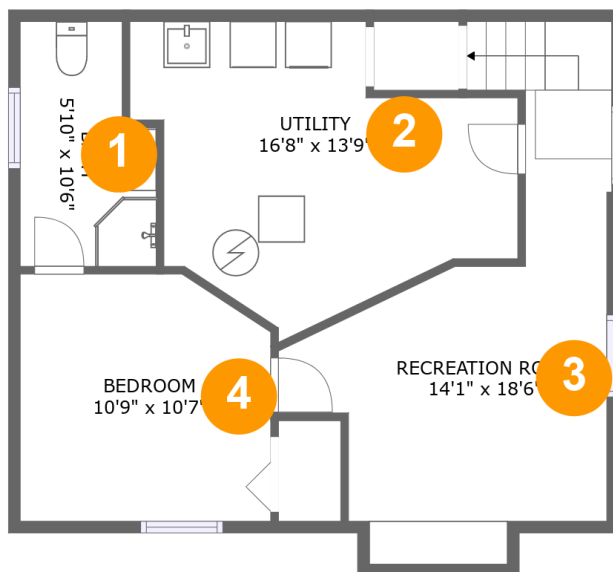
 **0** Half baths

 **3** Floors

 **1,296** Gross living area sqft

 **1,694** Total sqft

**7227 Southeast Hawthorne Boulevard, Mt. Tabor,  
Portland, Multnomah County, Oregon, United States,**



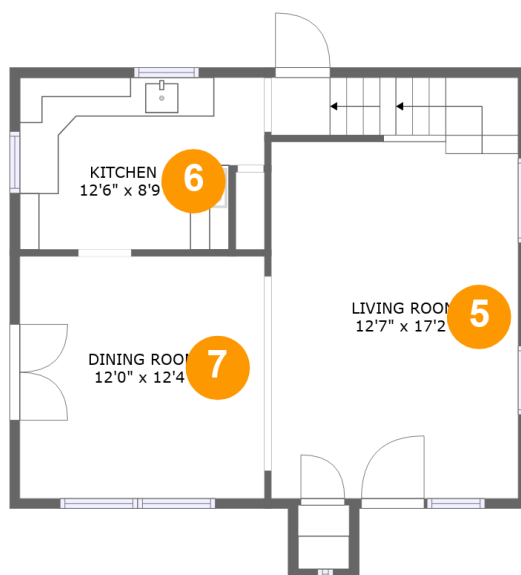
## Room dimensions

Floor 1

Total sqft: 608 Living area: 210

#		Dimensions	sqft	Counted as living area
1	Bath	5'10" x 10'6"	55 sq. ft	Yes
2	Utility	16'8" x 13'9"	161 sq. ft	No
3	Recreation Room	14'1" x 18'6"	184 sq. ft	No
4	Bedroom	10'9" x 10'7"	110 sq. ft	Yes

**7227 Southeast Hawthorne Boulevard, Mt. Tabor,  
Portland, Multnomah County, Oregon, United States,**



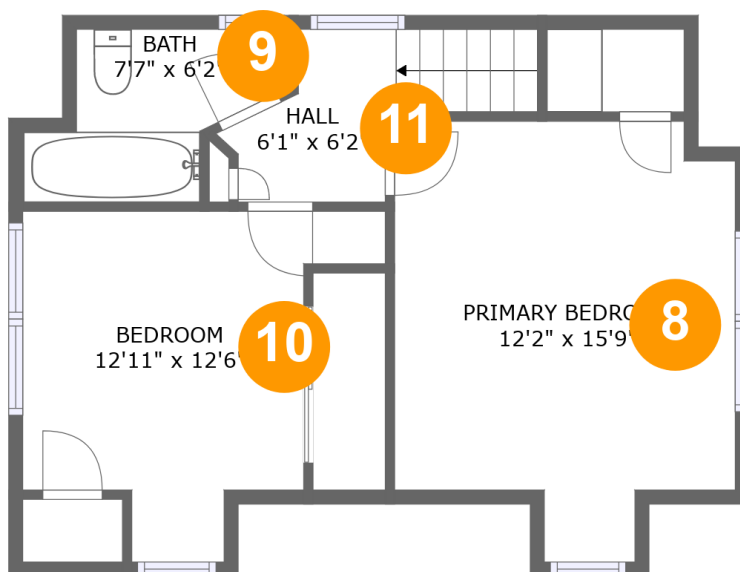
## Room dimensions

Floor 2

Total sqft: 608 Living area: 608

#		Dimensions	sqft	Counted as living area
5	Living Room	12'7" x 17'2"	269 sq. ft	Yes
6	Kitchen	12'6" x 8'9"	102 sq. ft	Yes
7	Dining Room	12'0" x 12'4"	155 sq. ft	Yes

**7227 Southeast Hawthorne Boulevard, Mt. Tabor,  
Portland, Multnomah County, Oregon, United States,**



## Room dimensions

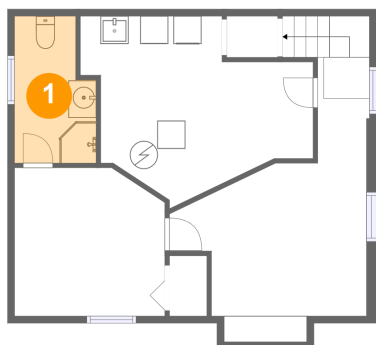
Floor 3

Total sqft: 478 Living area: 478

#		Dimensions	sqft	Counted as living area
8	Bedroom	12'2" x 15'9"	166 sq. ft	Yes
9	Bath	7'7" x 6'2"	41 sq. ft	Yes
10	Bedroom	12'11" x 12'6"	114 sq. ft	Yes
11	Hall	6'1" x 6'2"	43 sq. ft	Yes

**7227 Southeast Hawthorne Boulevard, Mt. Tabor,  
Portland, Multnomah County, Oregon, United States,**

## 1 Floor 1 - Bath



**Dimensions:** 5'10" x 10'6"  
**Area:** 55 sq. ft  
**Counted as living area:** Yes

**Heated:** Yes  
**Finished:** Yes  
**Enclosed:** Yes  
**Contiguous:** Yes  
**Permitted:** Yes  
**Wet space:** Yes  
**Addition:** No  
**Conversion:** No

## 2 Floor 1 - Utility



**Dimensions:** 16'8" x 13'9"  
**Area:** 161 sq. ft  
**Counted as living area:** No

**Heated:** Yes  
**Finished:** No  
**Enclosed:** Yes  
**Contiguous:** Yes  
**Permitted:** Yes  
**Wet space:** No  
**Addition:** No  
**Conversion:** No

7227 Southeast Hawthorne Boulevard, Mt. Tabor,  
Portland, Multnomah County, Oregon, United States,

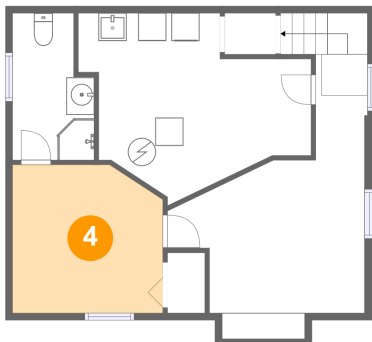
### 3 Floor 1 - Recreation Room



Dimensions: 14'1" x 18'6"  
Area: 184 sq. ft  
Counted as living area: No

Heated: Yes  
Finished: Yes  
Enclosed: Yes  
Contiguous: No  
Permitted: Yes  
Wet space: No  
Addition: No  
Conversion: No

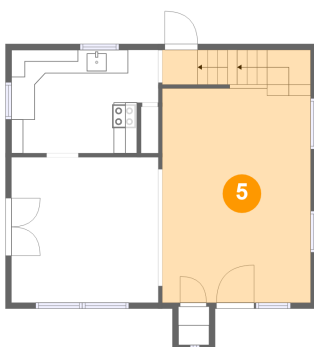
### 4 Floor 1 - Bedroom



Dimensions: 10'9" x 10'7"  
Area: 110 sq. ft  
Counted as living area: Yes

Heated: Yes  
Finished: Yes  
Enclosed: Yes  
Contiguous: Yes  
Permitted: Yes  
Wet space: No  
Addition: No  
Conversion: No

### 5 Floor 2 - Living Room

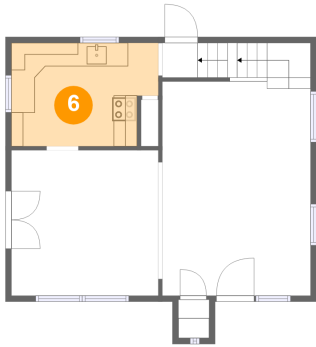


Dimensions: 12'7" x 17'2"  
Area: 269 sq. ft  
Counted as living area: Yes

Heated: Yes  
Finished: Yes  
Enclosed: Yes  
Contiguous: Yes  
Permitted: Yes  
Wet space: No  
Addition: No  
Conversion: No

**7227 Southeast Hawthorne Boulevard, Mt. Tabor,  
Portland, Multnomah County, Oregon, United States,**

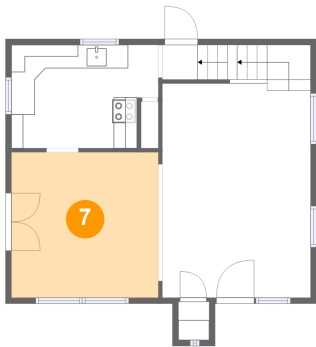
### 6 Floor 2 - Kitchen



Dimensions: 12'6" x 8'9"  
Area: 102 sq. ft  
Counted as living area: Yes

Heated: Yes  
Finished: Yes  
Enclosed: Yes  
Contiguous: Yes  
Permitted: Yes  
Wet space: No  
Addition: No  
Conversion: No

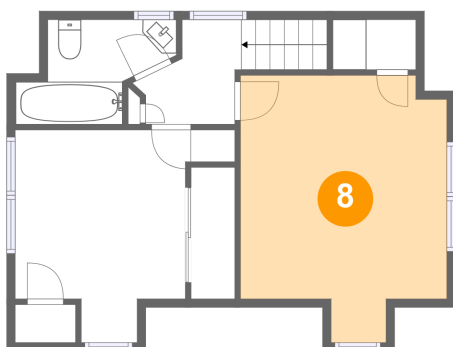
### 7 Floor 2 - Dining Room



Dimensions: 12'0" x 12'4"  
Area: 155 sq. ft  
Counted as living area: Yes

Heated: Yes  
Finished: Yes  
Enclosed: Yes  
Contiguous: Yes  
Permitted: Yes  
Wet space: No  
Addition: No  
Conversion: No

### 8 Floor 3 - Bedroom

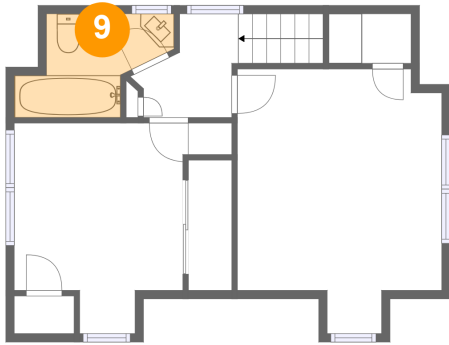


Dimensions: 12'2" x 15'9"  
Area: 166 sq. ft  
Counted as living area: Yes

Heated: Yes  
Finished: Yes  
Enclosed: Yes  
Contiguous: Yes  
Permitted: Yes  
Wet space: No  
Addition: No  
Conversion: No

7227 Southeast Hawthorne Boulevard, Mt. Tabor,  
Portland, Multnomah County, Oregon, United States,

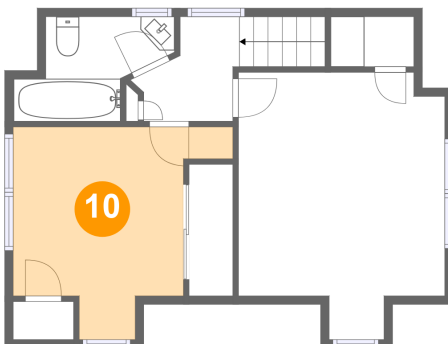
**9** Floor 3 - Bath



Dimensions: 7'7" x 6'2"  
Area: 41 sq. ft  
Counted as living area: Yes

Heated: Yes  
Finished: Yes  
Enclosed: Yes  
Contiguous: Yes  
Permitted: Yes  
Wet space: Yes  
Addition: No  
Conversion: No

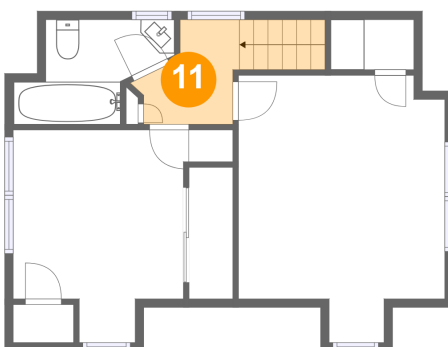
**10** Floor 3 - Bedroom



Dimensions: 12'11" x 12'6"  
Area: 114 sq. ft  
Counted as living area: Yes

Heated: Yes  
Finished: Yes  
Enclosed: Yes  
Contiguous: Yes  
Permitted: Yes  
Wet space: No  
Addition: No  
Conversion: No

**11** Floor 3 - Hall



Dimensions: 6'1" x 6'2"  
Area: 43 sq. ft  
Counted as living area: Yes

Heated: Yes  
Finished: Yes  
Enclosed: Yes  
Contiguous: Yes  
Permitted: Yes  
Wet space: No  
Addition: No  
Conversion: No