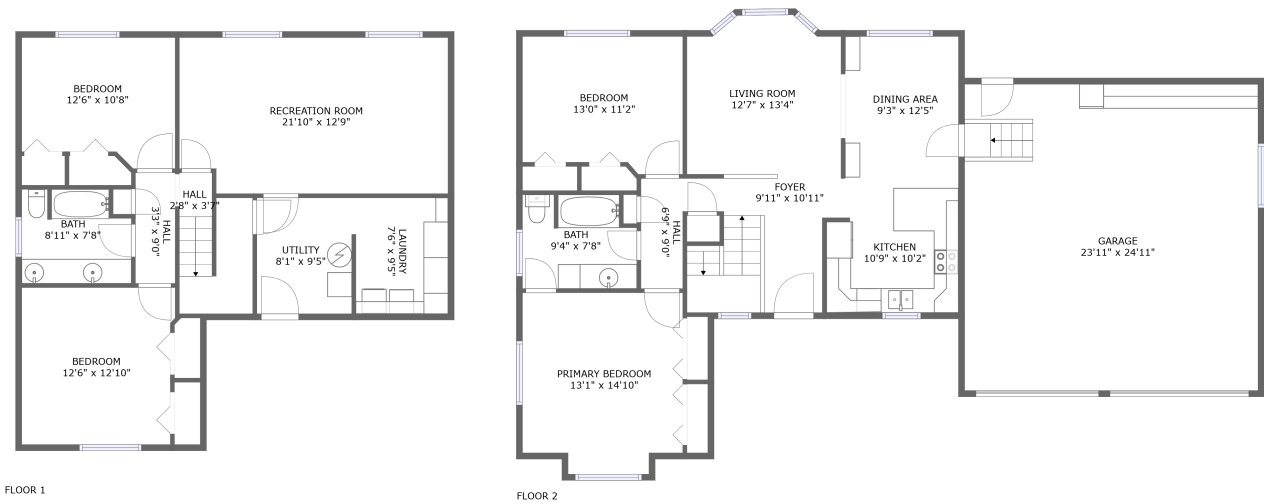


Home report

980 East 2850 North, North Logan, Cache County, Utah, United States, 84341




**Total Area: 1936 sq. ft**  
Below Ground: 939 sq. ft, Floor 2: 997 sq. ft  
Excluded: Garage 597 sq. ft, Walls: 178 sq. ft

Property summary

 **2** Floors

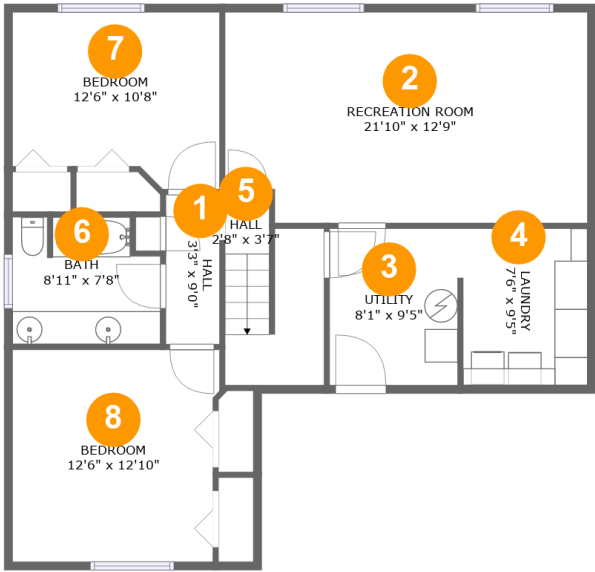
 **4** Bedrooms

 **2** Bathrooms

 **1** Garages

Home report

980 East 2850 North, North Logan, Cache County, Utah, United States, 84341



Room dimensions

Floor 1 Below ground

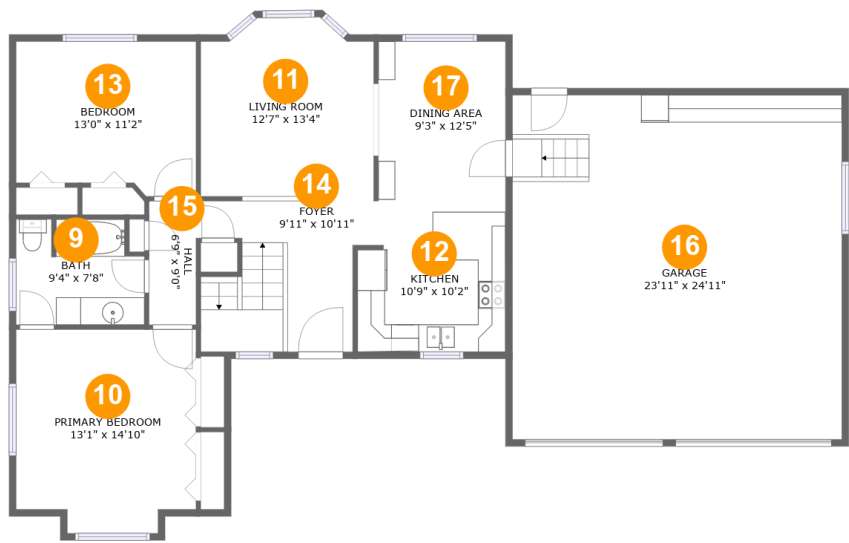
Total:939sqft

Excluded: 0sqft

#		Max Dimensions	sqft	Included
1	Hall	3'3" x 9'0"	29 sq. ft	Yes
2	Recreation Room	21'10" x 12'9"	273 sq. ft	Yes
3	Utility	8'1" x 9'5"	74 sq. ft	Yes
4	Laundry	7'6" x 9'5"	71 sq. ft	Yes
5	Hall	2'8" x 3'7"	60 sq. ft	Yes
6	Bath	8'11" x 7'8"	63 sq. ft	Yes
7	Bedroom	12'6" x 10'8"	122 sq. ft	Yes
8	Bedroom	12'6" x 12'10"	156 sq. ft	Yes

Home report

980 East 2850 North, North Logan, Cache County, Utah, United States, 84341



Room dimensions

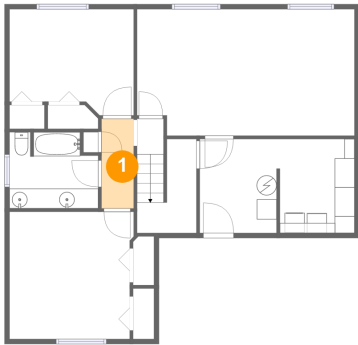
Floor 2

Total:997sqft

Excluded: 597sqft

#		Max Dimensions	sqft	Included
9	Bath	9'4" x 7'8"	67 sq. ft	Yes
10	Primary Bedroom	13'1" x 14'10"	182 sq. ft	Yes
11	Living Room	12'7" x 13'4"	156 sq. ft	Yes
12	Kitchen	10'9" x 10'2"	105 sq. ft	Yes
13	Bedroom	13'0" x 11'2"	138 sq. ft	Yes
14	Foyer	9'11" x 10'11"	110 sq. ft	Yes
15	Hall	6'9" x 9'0"	40 sq. ft	Yes
16	Garage	23'11" x 24'11"	597 sq. ft	No
17	Dining Area	9'3" x 12'5"	116 sq. ft	Yes

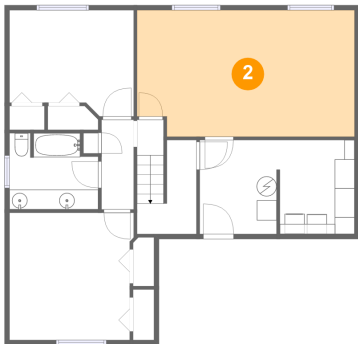
1 Floor 1 - Hall



Max Dimensions: 3'3" x 9'0"  
Calculated Area: 29 sq. ft  
Included: Yes

Heated: Yes  
Finished: Yes  
Enclosed: Yes  
Contiguous: Yes  
Permitted: Yes  
Wet space: No  
Addition: No  
Conversion: No

2 Floor 1 - Recreation Room

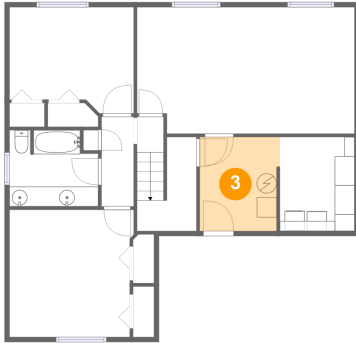


Max Dimensions: 21'10" x 12'9"  
Calculated Area: 273 sq. ft  
Included: Yes

Heated: Yes  
Finished: Yes  
Enclosed: Yes  
Contiguous: Yes  
Permitted: Yes  
Wet space: No  
Addition: No  
Conversion: No

980 East 2850 North, North Logan, Cache County, Utah, United States, 84341

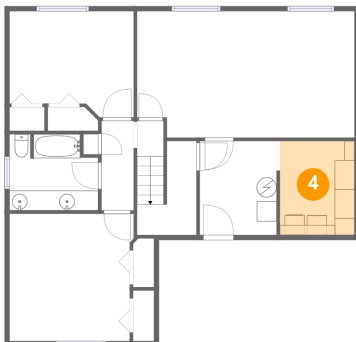
### 3 Floor 1 - Utility



Max Dimensions: 8'1" x 9'5"  
Calculated Area: 74 sq. ft  
Included: Yes

Heated: Yes  
Finished: Yes  
Enclosed: Yes  
Contiguous: Yes  
Permitted: Yes  
Wet space: No  
Addition: No  
Conversion: No

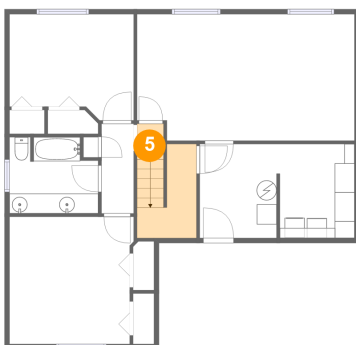
### 4 Floor 1 - Laundry



Max Dimensions: 7'6" x 9'5"  
Calculated Area: 71 sq. ft  
Included: Yes

Heated: Yes  
Finished: Yes  
Enclosed: Yes  
Contiguous: Yes  
Permitted: Yes  
Wet space: No  
Addition: No  
Conversion: No

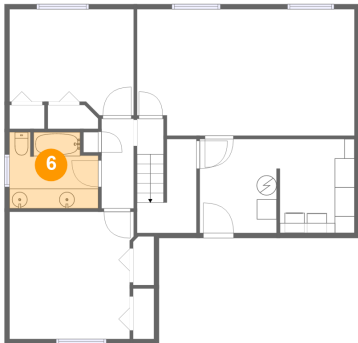
### 5 Floor 1 - Hall



Max Dimensions: 2'8" x 3'7"  
Calculated Area: 60 sq. ft  
Included: Yes

Heated: Yes  
Finished: Yes  
Enclosed: Yes  
Contiguous: Yes  
Permitted: Yes  
Wet space: No  
Addition: No  
Conversion: No

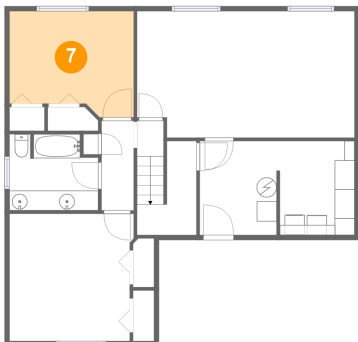
6 Floor 1 - Bath



Max Dimensions: 8'11" x 7'8"  
Calculated Area: 63 sq. ft  
Included: Yes

Heated: Yes  
Finished: Yes  
Enclosed: Yes  
Contiguous: Yes  
Permitted: Yes  
Wet space: Yes  
Addition: No  
Conversion: No

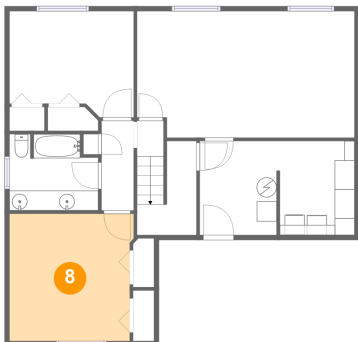
7 Floor 1 - Bedroom



Max Dimensions: 12'6" x 10'8"  
Calculated Area: 122 sq. ft  
Included: Yes

Heated: Yes  
Finished: Yes  
Enclosed: Yes  
Contiguous: Yes  
Permitted: Yes  
Wet space: No  
Addition: No  
Conversion: No

8 Floor 1 - Bedroom



Max Dimensions: 12'6" x 12'10"  
Calculated Area: 156 sq. ft  
Included: Yes

Heated: Yes  
Finished: Yes  
Enclosed: Yes  
Contiguous: Yes  
Permitted: Yes  
Wet space: No  
Addition: No  
Conversion: No

## Home report

980 East 2850 North, North Logan, Cache County, Utah, United States, 84341

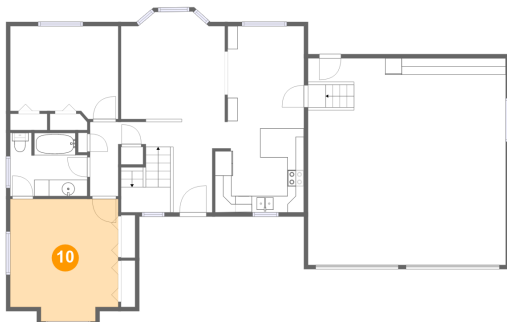
### 9 Floor 2 - Bath



Max Dimensions: 9'4" x 7'8"  
Calculated Area: 67 sq. ft  
Included: Yes

Heated: Yes  
Finished: Yes  
Enclosed: Yes  
Contiguous: Yes  
Permitted: Yes  
Wet space: Yes  
Addition: No  
Conversion: No

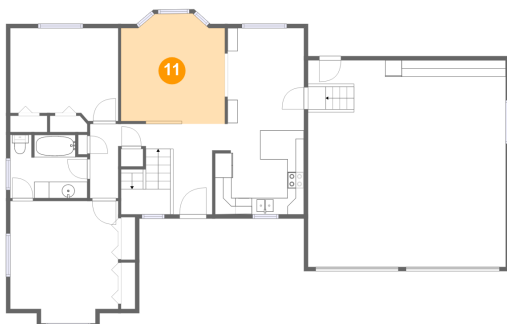
### 10 Floor 2 - Primary Bedroom



Max Dimensions: 13'1" x 14'10"  
Calculated Area: 182 sq. ft  
Included: Yes

Heated: Yes  
Finished: Yes  
Enclosed: Yes  
Contiguous: Yes  
Permitted: Yes  
Wet space: No  
Addition: No  
Conversion: No

### 11 Floor 2 - Living Room



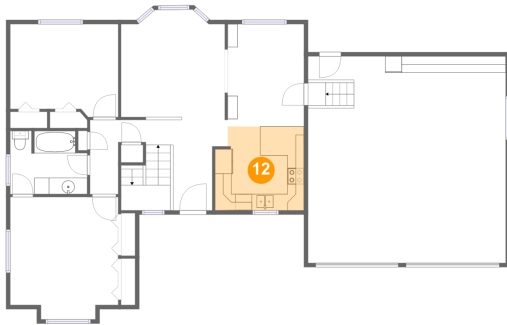
Max Dimensions: 12'7" x 13'4"  
Calculated Area: 156 sq. ft  
Included: Yes

Heated: Yes  
Finished: Yes  
Enclosed: Yes  
Contiguous: Yes  
Permitted: Yes  
Wet space: No  
Addition: No  
Conversion: No

## Home report

980 East 2850 North, North Logan, Cache County, Utah, United States, 84341

### 12 Floor 2 - Kitchen



Max Dimensions: 10'9" x 10'2"  
Calculated Area: 105 sq. ft  
Included: Yes

Heated: Yes  
Finished: Yes  
Enclosed: Yes  
Contiguous: Yes  
Permitted: Yes  
Wet space: No  
Addition: No  
Conversion: No

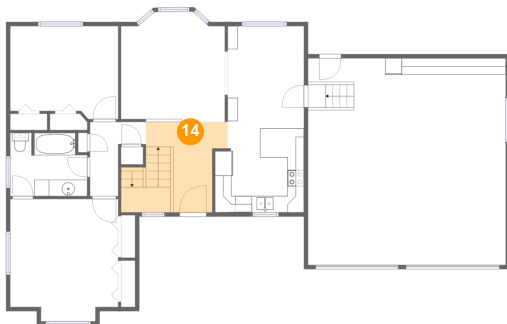
### 13 Floor 2 - Bedroom



Max Dimensions: 13'0" x 11'2"  
Calculated Area: 138 sq. ft  
Included: Yes

Heated: Yes  
Finished: Yes  
Enclosed: Yes  
Contiguous: Yes  
Permitted: Yes  
Wet space: No  
Addition: No  
Conversion: No

### 14 Floor 2 - Foyer



Max Dimensions: 9'11" x 10'11"  
Calculated Area: 110 sq. ft  
Included: Yes

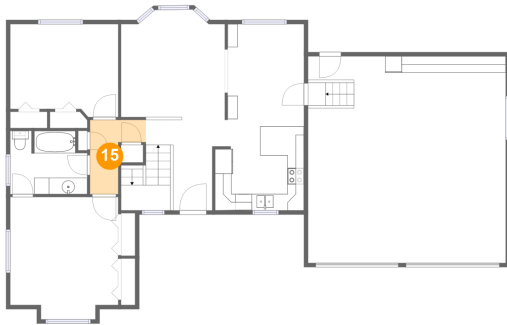
Heated: Yes  
Finished: Yes  
Enclosed: Yes  
Contiguous: Yes  
Permitted: Yes  
Wet space: No  
Addition: No  
Conversion: No



## Home report

980 East 2850 North, North Logan, Cache County, Utah, United States, 84341

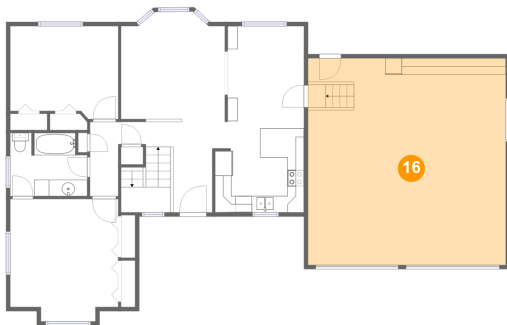
### 15 Floor 2 - Hall



Max Dimensions: 6'9" x 9'0"  
Calculated Area: 40 sq. ft  
Included: Yes

Heated: Yes  
Finished: Yes  
Enclosed: Yes  
Contiguous: Yes  
Permitted: Yes  
Wet space: No  
Addition: No  
Conversion: No

### 16 Floor 2 - Garage



Max Dimensions: 23'11" x 24'11"  
Calculated Area: 597 sq. ft  
Included: No

Heated: No  
Finished: No  
Enclosed: Yes  
Contiguous: Yes  
Permitted: Yes  
Wet space: No  
Addition: No  
Conversion: No

### 17 Floor 2 - Dining Area



Max Dimensions: 9'3" x 12'5"  
Calculated Area: 116 sq. ft  
Included: Yes

Heated: Yes  
Finished: Yes  
Enclosed: Yes  
Contiguous: Yes  
Permitted: Yes  
Wet space: No  
Addition: No  
Conversion: No