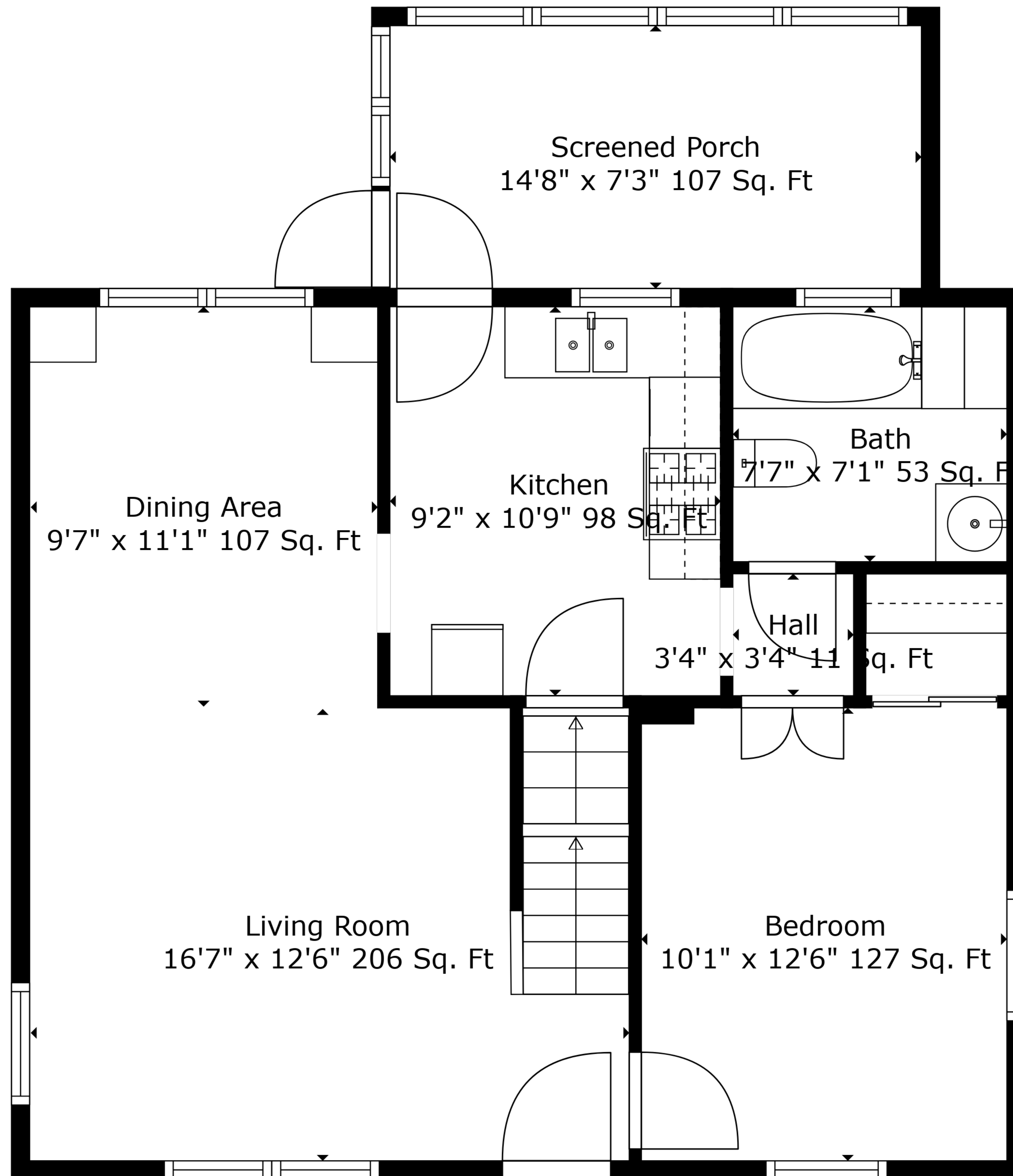


Basement  
27'0" x 23'7" 638 Sq. Ft

TOTAL: 695 sq. ft  
BELOW GROUND: 0 sq. ft, FLOOR 2: 639 sq. ft, FLOOR 3: 56 sq. ft  
EXCLUDED AREAS: BASEMENT: 638 sq. ft, SCREENED PORCH: 107 sq. ft, ATTIC: 204 sq. ft,  
LOW CEILING: 36 sq. ft

Measurements Are Deemed Highly Reliable But Not Guaranteed.



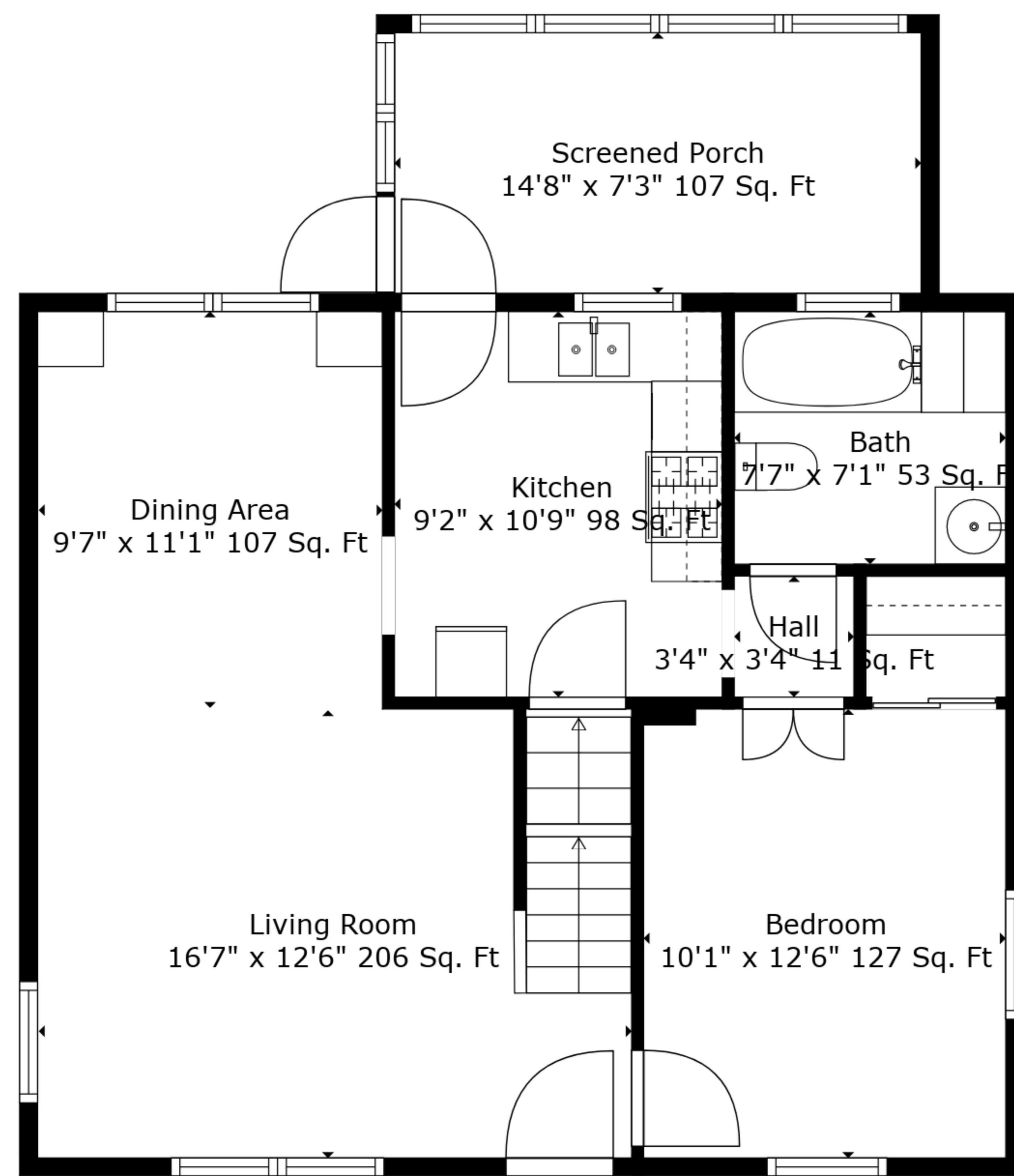
TOTAL: 695 sq. ft  
 BELOW GROUND: 0 sq. ft, FLOOR 2: 639 sq. ft, FLOOR 3: 56 sq. ft  
 EXCLUDED AREAS: BASEMENT: 638 sq. ft, SCREENED PORCH: 107 sq. ft, ATTIC: 204 sq. ft,  
 LOW CEILING: 36 sq. ft

Measurements Are Deemed Highly Reliable But Not Guaranteed.

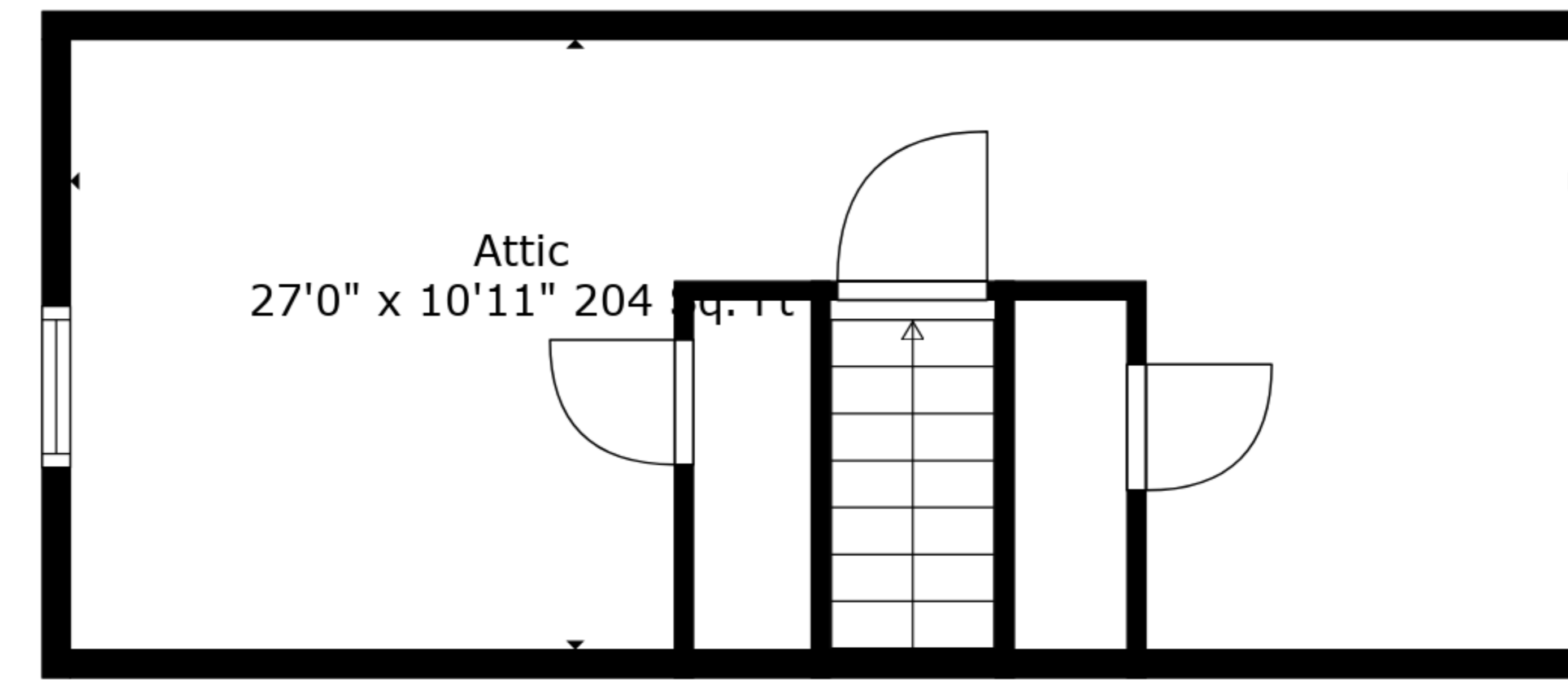
Attic  
27'0" x 10'11" 204 sq. ft

TOTAL: 695 sq. ft  
BELOW GROUND: 0 sq. ft, FLOOR 2: 639 sq. ft, FLOOR 3: 56 sq. ft  
EXCLUDED AREAS: BASEMENT: 638 sq. ft, SCREENED PORCH: 107 sq. ft, ATTIC: 204 sq. ft,  
LOW CEILING: 36 sq. ft

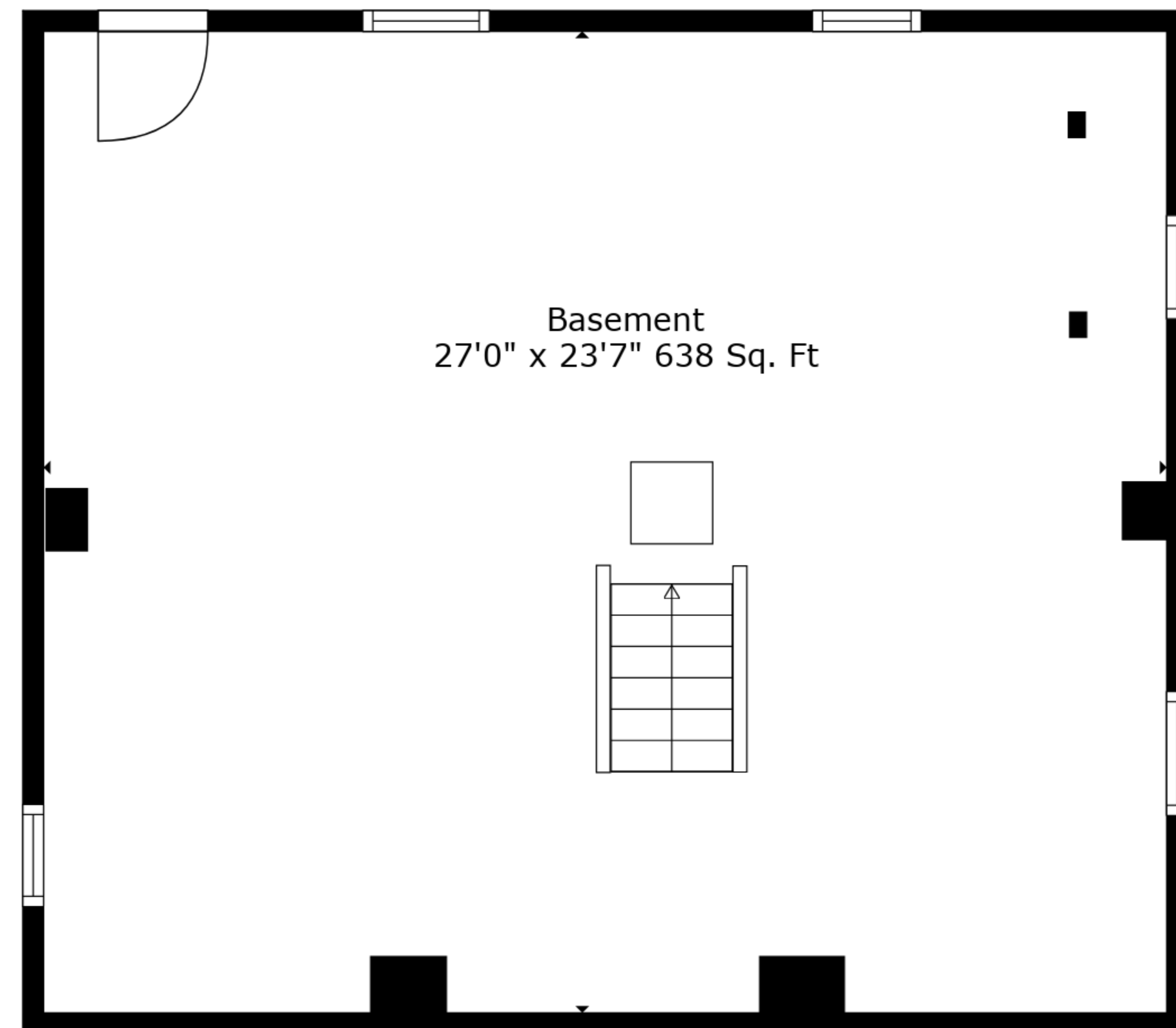
Measurements Are Deemed Highly Reliable But Not Guaranteed.



Floor 2



Floor 3



Floor 1

TOTAL: 695 sq. ft  
 BELOW GROUND: 0 sq. ft, FLOOR 2: 639 sq. ft, FLOOR 3: 56 sq. ft  
 EXCLUDED AREAS: BASEMENT: 638 sq. ft, SCREENED PORCH: 107 sq. ft, ATTIC: 204 sq. ft,  
 LOW CEILING: 36 sq. ft

Measurements Are Deemed Highly Reliable But Not Guaranteed.