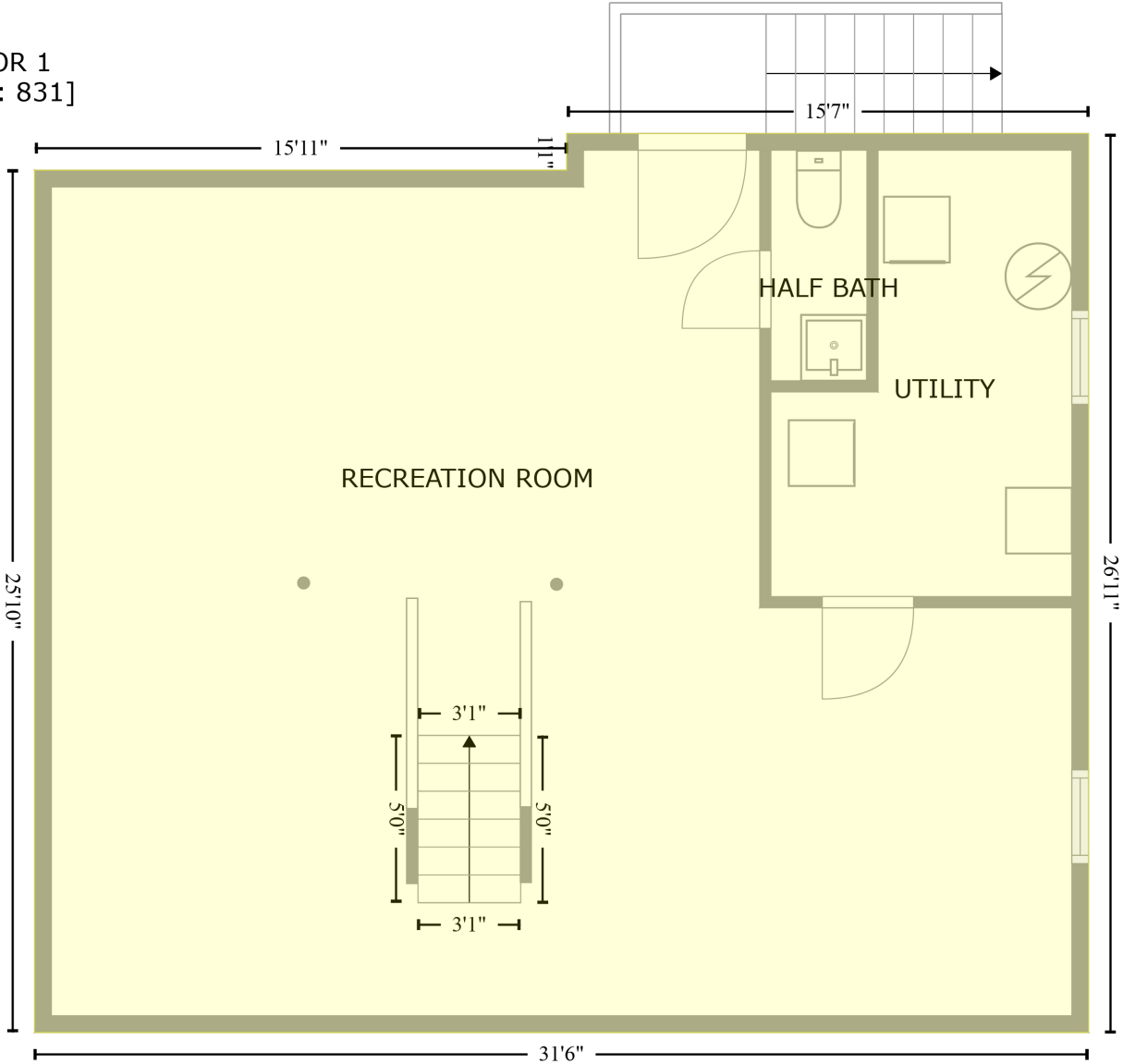


6 Iron Bolt Court, Woodlawn, Catonsville, Baltimore County, Maryland, United States, 21228

Gross Living Area: 1998 sq. ft

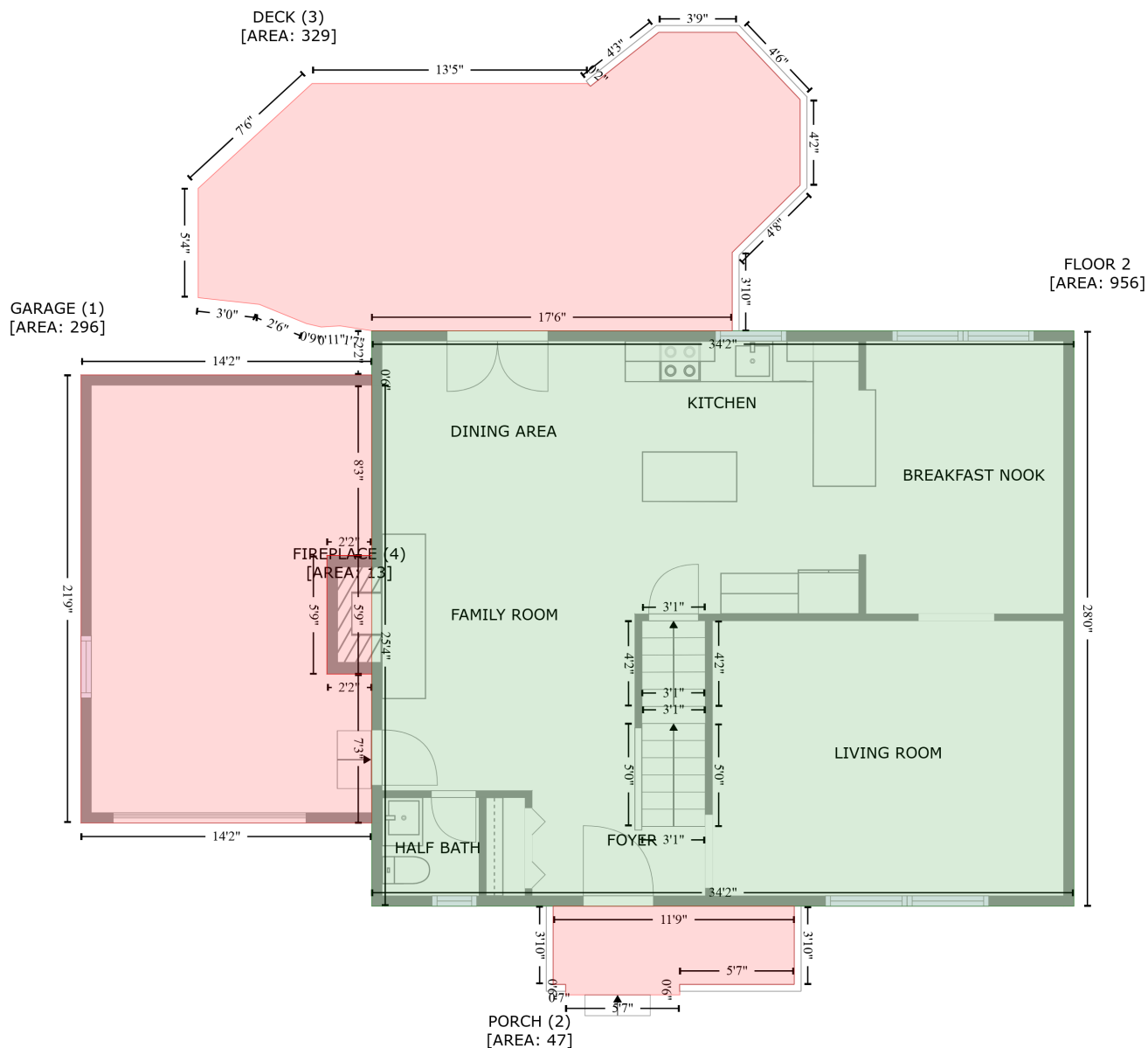
FLOOR 1
[AREA: 831]



Space	Area (sq. ft)	Calculation <small>Coordinate Polygon Area Algorithm using inches</small>
FLOOR 1 (Living area)	831	$-((657.2 + 657.2) * (207.3 - 530.1) + (657.2 + 278.7) * (530.1 - 530.1) + (278.7 + 278.7) * (530.1 - 220.5) + (278.7 + 469.8) * (220.5 - 220.5) + (469.8 + 469.8) * (220.5 - 207.3) + (469.8 + 657.2) * (207.3 - 207.3)) * 0.5 * 0.00694$

6 Iron Bolt Court, Woodlawn, Catonsville, Baltimore County, Maryland, United States, 21228

Gross Living Area: 1998 sq. ft



Space	Area (sq. ft)	Calculation <small>Coordinate Polygon Area Algorithm using inches</small>
FLOOR 2 (Living area)	956	$-((668.5 + 668.5) * (194.4 - 530.1) + (668.5 + 258.6) * (530.1 - 530.1) + (258.6 + 258.6) * (530.1 - 226.2) + (258.6 + 258.6) * (226.2 - 220.2) + (258.6 + 258.6) * (220.2 - 194.4) + (258.6 + 668.5) * (194.4 - 194.4)) * 0.5 + 0.00694$
GARAGE (Non-living area)	296	$-((258.6 + 258.6) * (220.2 - 226.2) + (258.6 + 258.6) * (226.2 - 325.5) + (258.6 + 232.4) * (325.5 - 325.5) + (232.4 + 232.4) * (325.5 - 394.7) + (232.4 + 258.6) * (394.7 - 394.7) + (258.6 + 258.6) * (394.7 - 481.6) + (258.6 + 88.9) * (481.6 - 481.6) + (88.9 + 88.9) * (481.6 - 220.2) + (88.9 +$

6 Iron Bolt Court, Woodlawn, Catonsville, Baltimore County, Maryland, United States, 21228

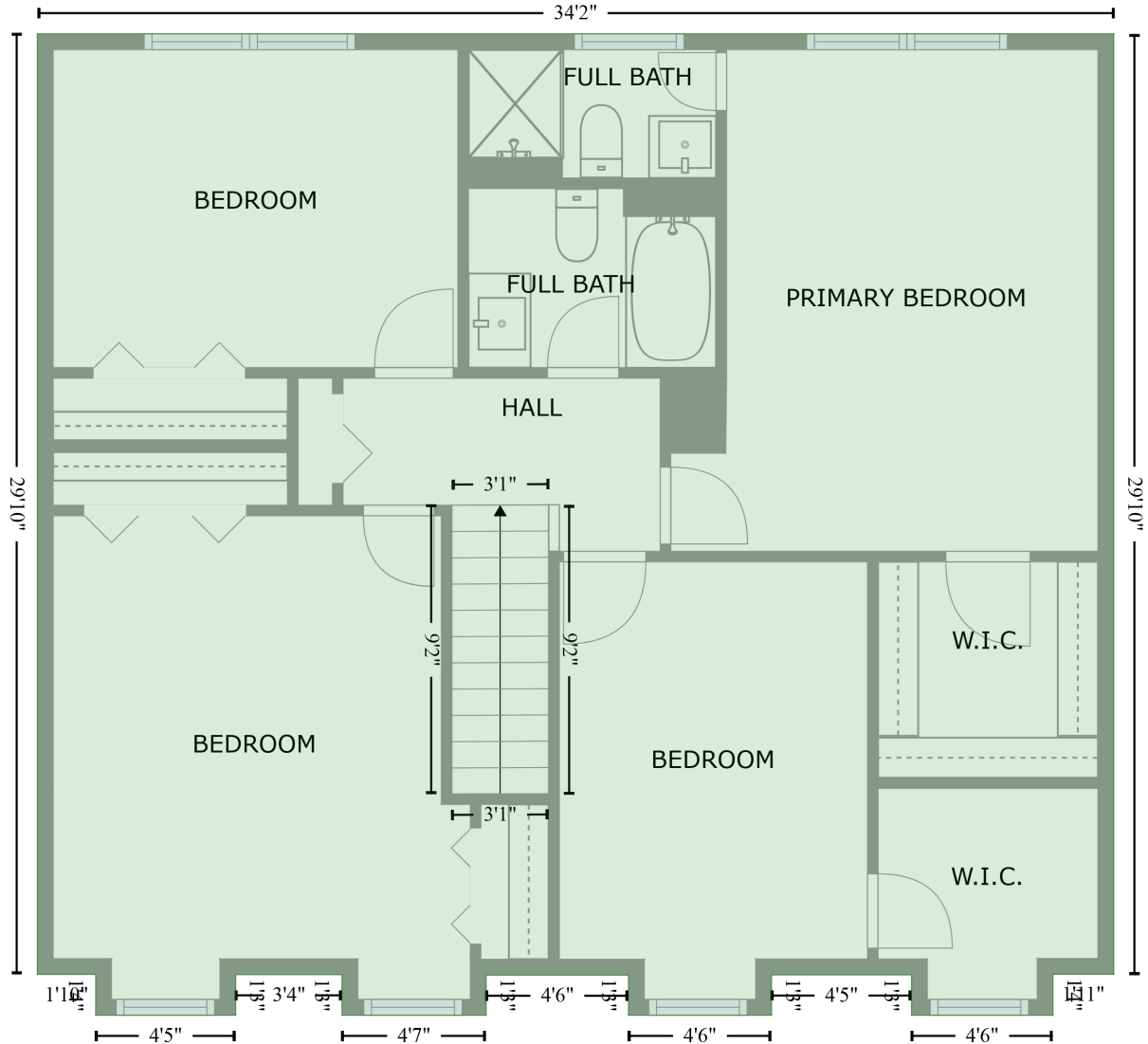
Gross Living Area: 1998 sq. ft

Space	Area (sq. ft)	Calculation <small>Coordinate Polygon Area Algorithm using inches</small>
PORCH (Non-living area)	47	$258.6 * (220.2 - 220.2) * 0.5 * 0.00694$ $-((505.3 + 505.3) * (530.1 - 575.8) + (505.3 + 438.3) * (575.8 - 575.8) + (438.3 + 438.5) * (575.8 - 581.9) + (438.5 + 371.8) * (581.9 - 581.9) + (371.8 + 371.8) * (581.9 - 575.8) + (371.8 + 364.5) * (575.8 - 575.8) + (364.5 + 364.5) * (575.8 - 530.1) + (364.5 + 505.3) * (530.1 - 530.1)) * 0.5 * 0.00694$
DECK (Non-living area)	329	$-((471.4 + 508.7) * (20.3 - 59.5) + (508.7 + 508.7) * (59.5 - 109.5) + (508.7 + 469) * (109.5 - 148.7) + (469 + 469) * (148.7 - 194.4) + (469 + 258.6) * (194.4 - 194.4) + (258.6 + 240.1) * (194.4 - 191.5) + (240.1 + 229.1) * (191.5 - 192.2) + (229.1 + 220.5) * (192.2 - 190.2) + (220.5 + 193) * (190.2 - 179) + (193 + 157.3) * (179 - 175.1) + (157.3 + 157.3) * (175.1 - 111.4) + (157.3 + 223.8) * (111.4 - 50.2) + (223.8 + 384.4) * (50.2 - 50.2) + (384.4 + 386.3) * (50.2 - 51.8) + (386.3 + 426.1) * (51.8 - 20.3) + (426.1 + 471.4) * (20.3 - 20.3)) * 0.5 * 0.00694$
FIREPLACE (Non-living area)	13	$-((258.6 + 258.6) * (325.5 - 394.7) + (258.6 + 232.4) * (394.7 - 394.7) + (232.4 + 232.4) * (394.7 - 325.5) + (232.4 + 258.6) * (325.5 - 325.5)) * 0.5 * 0.00694$

6 Iron Bolt Court, Woodlawn, Catonsville, Baltimore County, Maryland, United States, 21228

Gross Living Area: 1998 sq. ft

FLOOR 3
[AREA: 1042]



Space	Area (sq. ft)	Calculation <small>Coordinate Polygon Area Algorithm using inches</small>
FLOOR 3 (Living area)	1042	$ \begin{aligned} & -((258.6 + 668.5) * (194.4 - 194.4) + (668.5 + 668.5) * (194.4 - 552.3) + (668.5 + 645.4) * (552.3 - \\ & 552.3) + (645.4 + 645.4) * (552.3 - 567.9) + (645.4 + 591.5) * (567.9 - 567.9) + (591.5 + 591.5) * \\ & (567.9 - 552.5) + (591.5 + 538.2) * (552.5 - 552.5) + (538.2 + 538.2) * (552.5 - 567.9) + (538.2 + \\ & 483.7) * (567.9 - 567.9) + (483.7 + 483.7) * (567.9 - 552.6) + (483.7 + 429.5) * (552.6 - 552.6) + \\ & (429.5 + 429.5) * (552.6 - 567.9) + (429.5 + 374.6) * (567.9 - 567.9) + (374.6 + 374.6) * (567.9 - \\ & 552.5) + (374.6 + 334.1) * (552.5 - 552.5) + (334.1 + 334.1) * (552.5 - 567.9) + (334.1 + 280.8) * \\ & (567.9 - 567.9) + (280.8 + 280.8) * (567.9 - 552.4) + (280.8 + 258.6) * (552.4 - 552.4) + (258.6 + \end{aligned} $

6 Iron Bolt Court, Woodlawn, Catonsville, Baltimore County, Maryland, United States, 21228

Gross Living Area: 1998 sq. ft

Space	Area (sq. ft)	Calculation <small>Coordinate Polygon Area Algorithm using inches</small>
		$258.6 * (552.4 - 194.4) * 0.5 * 0.00694$