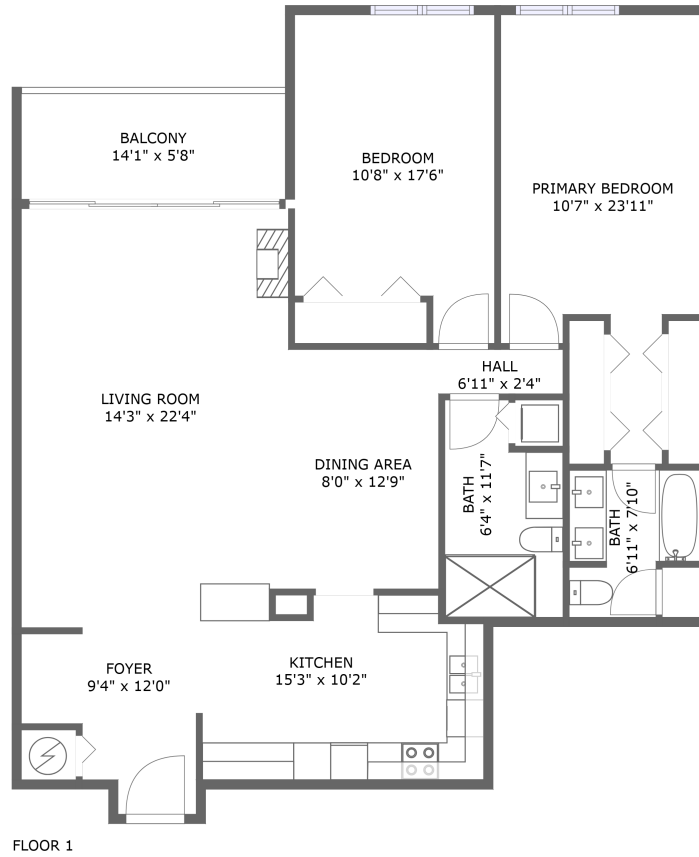


# 400 Island Way, Clearwater Beach, Pinellas County, Florida, United States, 33767, 1403

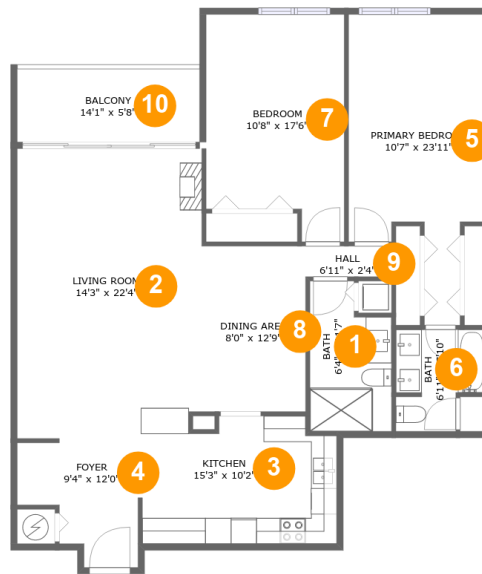


## Property Summary

 **0** garages     **2** bedrooms     **2** bathrooms     **0** half baths

 **1** floors     **1,233** Gross Living Area sqft     **1,317** total sqft

# 400 Island Way, Clearwater Beach, Pinellas County, Florida, United States, 33767, 1403



## Room Dimensions

Floor 1

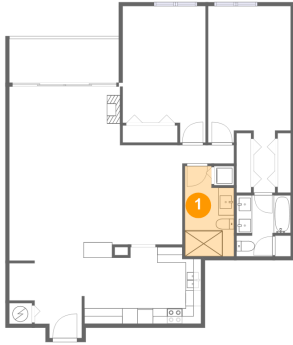
Total sqft: 1317

Living area: 1233

#	Room name	Dimensions	Area (sqft)	Counted as Living Area
1	Bath	6'4" x 11'7"	65 sq. ft	Yes
2	Living Room	14'3" x 22'4"	293 sq. ft	Yes
3	Kitchen	15'3" x 10'2"	144 sq. ft	Yes
4	Foyer	9'4" x 12'0"	87 sq. ft	Yes
5	Primary Bedroom	10'7" x 23'11"	196 sq. ft	Yes
6	Bath	6'11" x 7'10"	47 sq. ft	Yes
7	Bedroom	10'8" x 17'6"	168 sq. ft	Yes
8	Dining Area	8'0" x 12'9"	102 sq. ft	Yes
9	Hall	6'11" x 2'4"	16 sq. ft	Yes
10	Balcony	14'1" x 5'8"	84 sq. ft	No

# 400 Island Way, Clearwater Beach, Pinellas County, Florida, United States, 33767, 1403

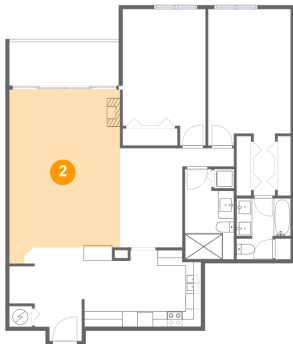
## 1 Floor 1 - Bath



Dimensions: 6'4" x 11'7"  
Area: 65 sq. ft  
Counted as Living Area:  
Yes

Heated: Yes  
Finished: Yes  
Enclosed: Yes  
Contiguous:  
Yes  
Permitted: Yes  
Wet Space: Yes  
Addition: No  
Conversion: No

## 2 Floor 1 - Living Room

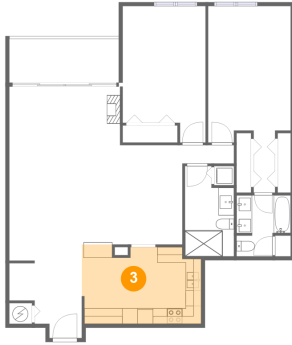


Dimensions: 14'3" x 22'4"  
Area: 293 sq. ft  
Counted as Living Area:  
Yes

Heated: Yes  
Finished: Yes  
Enclosed: Yes  
Contiguous:  
Yes  
Permitted: Yes  
Wet Space: No  
Addition: No  
Conversion: No

# 400 Island Way, Clearwater Beach, Pinellas County, Florida, United States, 33767, 1403

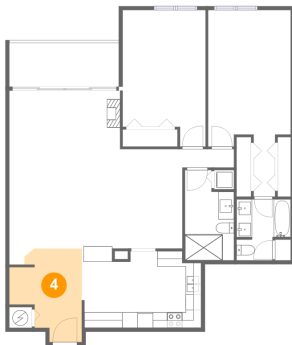
## 3 Floor 1 - Kitchen



Dimensions: 15'3" x 10'2"  
Area: 144 sq. ft  
Counted as Living Area:  
Yes

Heated: Yes  
Finished: Yes  
Enclosed: Yes  
Contiguous:  
Yes  
Permitted: Yes  
Wet Space: No  
Addition: No  
Conversion: No

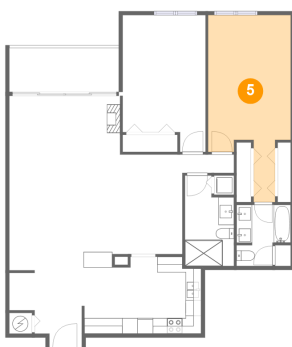
## 4 Floor 1 - Foyer



Dimensions: 9'4" x 12'0"  
Area: 87 sq. ft  
Counted as Living Area:  
Yes

Heated: Yes  
Finished: Yes  
Enclosed: Yes  
Contiguous:  
Yes  
Permitted: Yes  
Wet Space: No  
Addition: No  
Conversion: No

## 5 Floor 1 - Primary Bedroom

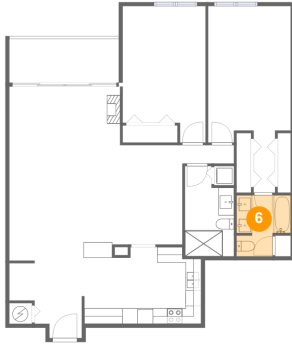


Dimensions: 10'7" x 23'11"  
Area: 196 sq. ft  
Counted as Living Area:  
Yes

Heated: Yes  
Finished: Yes  
Enclosed: Yes  
Contiguous:  
Yes  
Permitted: Yes  
Wet Space: No  
Addition: No  
Conversion: No

# 400 Island Way, Clearwater Beach, Pinellas County, Florida, United States, 33767, 1403

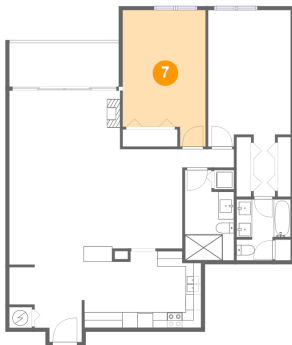
## 6 Floor 1 - Bath



Dimensions: 6'11" x 7'10"  
Area: 47 sq. ft  
Counted as Living Area:  
Yes

Heated: Yes  
Finished: Yes  
Enclosed: Yes  
Contiguous:  
Yes  
Permitted: Yes  
Wet Space: Yes  
Addition: No  
Conversion: No

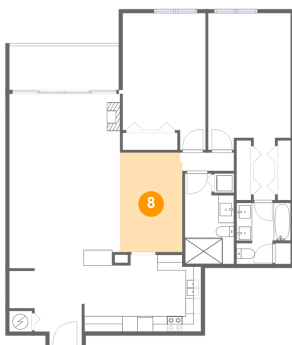
## 7 Floor 1 - Bedroom



Dimensions: 10'8" x 17'6"  
Area: 168 sq. ft  
Counted as Living Area:  
Yes

Heated: Yes  
Finished: Yes  
Enclosed: Yes  
Contiguous:  
Yes  
Permitted: Yes  
Wet Space: No  
Addition: No  
Conversion: No

## 8 Floor 1 - Dining Area

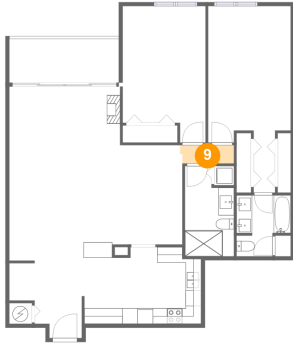


Dimensions: 8'0" x 12'9"  
Area: 102 sq. ft  
Counted as Living Area:  
Yes

Heated: Yes  
Finished: Yes  
Enclosed: Yes  
Contiguous:  
Yes  
Permitted: Yes  
Wet Space: No  
Addition: No  
Conversion: No

# 400 Island Way, Clearwater Beach, Pinellas County, Florida, United States, 33767, 1403

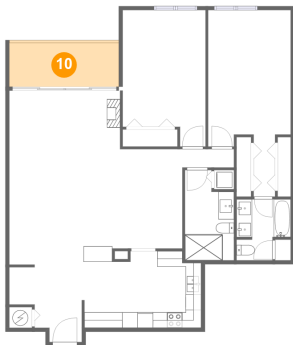
## 9 Floor 1 - Hall



Dimensions: 6'11" x 2'4"  
Area: 16 sq. ft  
Counted as Living Area: Yes

Heated: Yes  
Finished: Yes  
Enclosed: Yes  
Contiguous: Yes  
Permitted: Yes  
Wet Space: No  
Addition: No  
Conversion: No

## 10 Floor 1 - Balcony



Dimensions: 14'1" x 5'8"  
Area: 84 sq. ft  
Counted as Living Area: No

Heated: No  
Finished: Yes  
Enclosed: No  
Contiguous: Yes  
Permitted: Yes  
Wet Space: No  
Addition: No  
Conversion: No