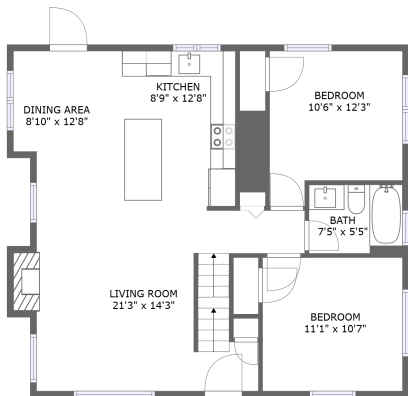
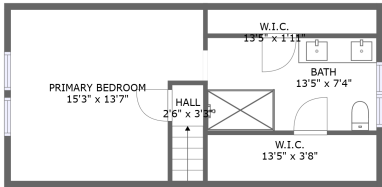


Home report

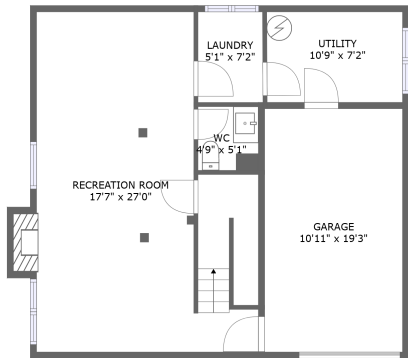
1608 North 38th Street, Wallingford, Seattle, King County,
Washington, United States, 98103



FLOOR 2



FLOOR 3



FLOOR 1

Total Area: 1686 sq. ft

Floor 1: 559 sq. ft, Floor 2: 800 sq. ft, Floor 3: 327 sq. ft

Excluded: Garage 211 sq. ft, Fireplace 20 sq. ft, Low Ceiling 68 sq. ft, Walls: 169 sq. ft

Property summary



3 Floors



3 Bedrooms



2 Bathrooms

Home report

**1608 North 38th Street, Wallingford, Seattle, King County,
Washington, United States, 98103**



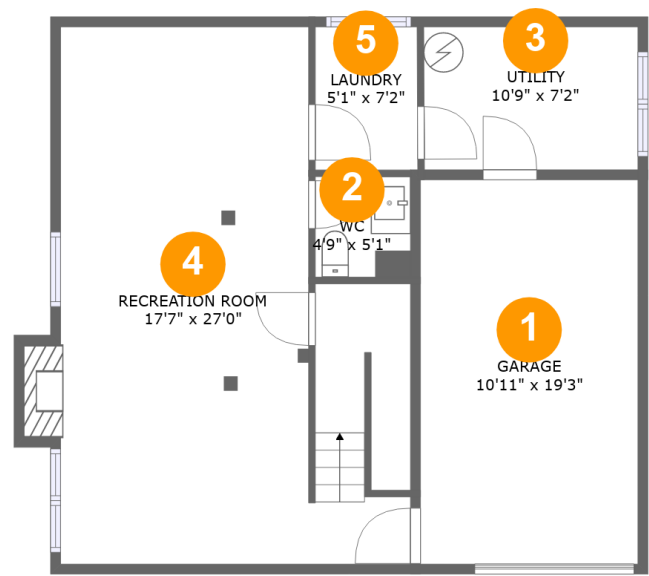
1
Half baths



1
Garages

Home report

1608 North 38th Street, Wallingford, Seattle, King County,
Washington, United States, 98103



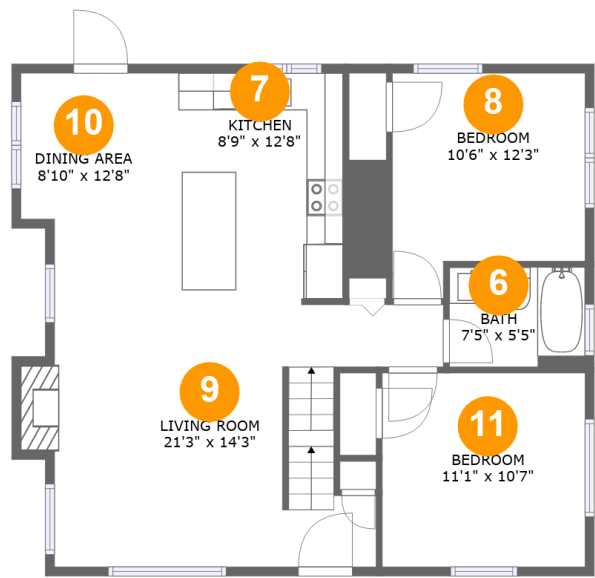
Room dimensions

Floor 1 Total:559sqft Excluded: 221sqft

#		Max Dimensions	sqft	Included
1	Garage	10'11" x 19'3"	211 sq. ft	No
2	WC	4'9" x 5'1"	24 sq. ft	Yes
3	Utility	10'9" x 7'2"	77 sq. ft	Yes
4	Recreation Room	17'7" x 27'0"	410 sq. ft	Yes
5	Laundry	5'1" x 7'2"	37 sq. ft	Yes

Home report

1608 North 38th Street, Wallingford, Seattle, King County,
Washington, United States, 98103



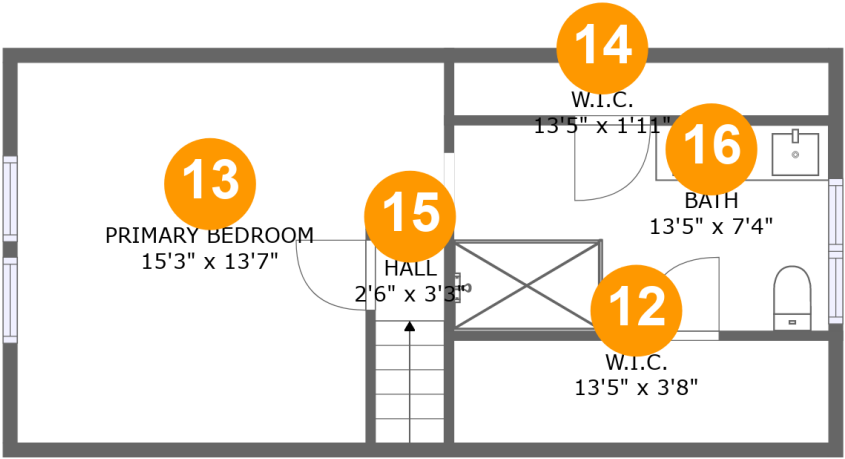
Room dimensions

Floor 2 Total:800sqft Excluded: 10sqft

#		Max Dimensions	sqft	Included
6	Bath	7'5" x 5'5"	40 sq. ft	Yes
7	Kitchen	8'9" x 12'8"	110 sq. ft	Yes
8	Bedroom	10'6" x 12'3"	114 sq. ft	Yes
9	Living Room	21'3" x 14'3"	256 sq. ft	Yes
10	Dining Area	8'10" x 12'8"	103 sq. ft	Yes
11	Bedroom	11'1" x 10'7"	117 sq. ft	Yes

Home report

1608 North 38th Street, Wallingford, Seattle, King County,
Washington, United States, 98103



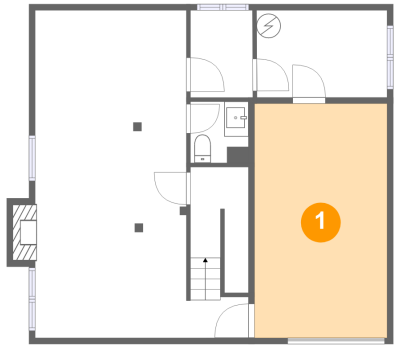
Room dimensions

Floor 3 Total:327sqft Excluded: 68sqft

#		Max Dimensions	sqft	Included
12	W.I.C.	13'5" x 3'8"	27 sq. ft	Yes
13	Primary Bedroom	15'3" x 13'7"	151 sq. ft	Yes
14	W.I.C.	13'5" x 1'11"	13 sq. ft	Yes
15	Hall	2'6" x 3'3"	19 sq. ft	Yes
16	Bath	13'5" x 7'4"	99 sq. ft	Yes

1608 North 38th Street, Wallingford, Seattle, King County,
Washington, United States, 98103

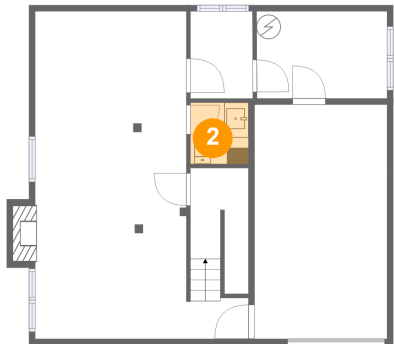
1 Floor 1 - Garage



Max Dimensions: 10'11" x 19'3"
Calculated Area: 211 sq. ft
Included: No

Heated: No
Finished: No
Enclosed: Yes
Contiguous: Yes
Permitted: Yes
Wet space: No
Addition: No
Conversion: No

2 Floor 1 - WC



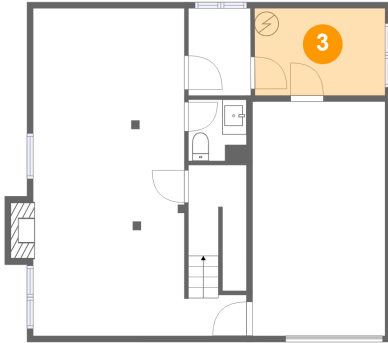
Max Dimensions: 4'9" x 5'1"
Calculated Area: 24 sq. ft
Included: Yes

Heated: Yes
Finished: Yes
Enclosed: Yes
Contiguous: Yes
Permitted: Yes
Wet space: Yes
Addition: No
Conversion: No

Home report

1608 North 38th Street, Wallingford, Seattle, King County,
Washington, United States, 98103

3 Floor 1 - Utility



Max Dimensions: 10'9" x 7'2"
Calculated Area: 77 sq. ft
Included: Yes

Heated: Yes
Finished: Yes
Enclosed: Yes
Contiguous: Yes
Permitted: Yes
Wet space: No
Addition: No
Conversion: No

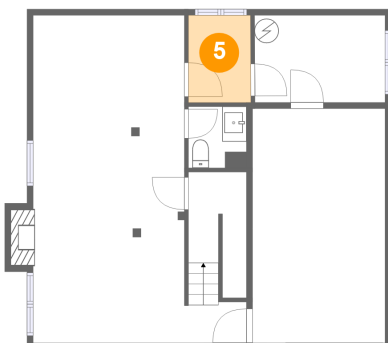
4 Floor 1 - Recreation Room



Max Dimensions: 17'7" x 27'0"
Calculated Area: 410 sq. ft
Included: Yes

Heated: Yes
Finished: Yes
Enclosed: Yes
Contiguous: Yes
Permitted: Yes
Wet space: No
Addition: No
Conversion: No

5 Floor 1 - Laundry

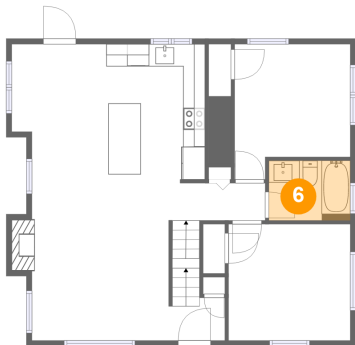


Max Dimensions: 5'1" x 7'2"
Calculated Area: 37 sq. ft
Included: Yes

Heated: Yes
Finished: Yes
Enclosed: Yes
Contiguous: Yes
Permitted: Yes
Wet space: No
Addition: No
Conversion: No

1608 North 38th Street, Wallingford, Seattle, King County,
Washington, United States, 98103

6 Floor 2 - Bath



Max Dimensions: 7'5" x 5'5"
Calculated Area: 40 sq. ft
Included: Yes

Heated: Yes
Finished: Yes
Enclosed: Yes
Contiguous: Yes
Permitted: Yes
Wet space: Yes
Addition: No
Conversion: No

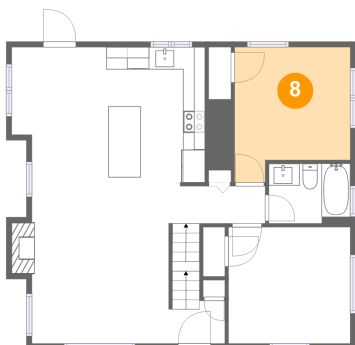
7 Floor 2 - Kitchen



Max Dimensions: 8'9" x 12'8"
Calculated Area: 110 sq. ft
Included: Yes

Heated: Yes
Finished: Yes
Enclosed: Yes
Contiguous: Yes
Permitted: Yes
Wet space: No
Addition: No
Conversion: No

8 Floor 2 - Bedroom



Max Dimensions: 10'6" x 12'3"
Calculated Area: 114 sq. ft
Included: Yes

Heated: Yes
Finished: Yes
Enclosed: Yes
Contiguous: Yes
Permitted: Yes
Wet space: No
Addition: No
Conversion: No

1608 North 38th Street, Wallingford, Seattle, King County,
Washington, United States, 98103

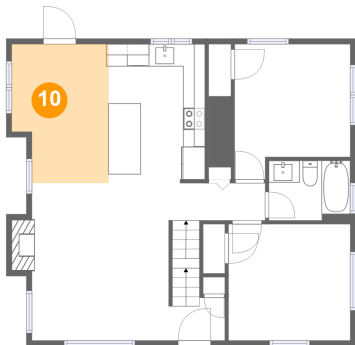
9 Floor 2 - Living Room



Max Dimensions: 21'3" x 14'3"
Calculated Area: 256 sq. ft
Included: Yes

Heated: Yes
Finished: Yes
Enclosed: Yes
Contiguous: Yes
Permitted: Yes
Wet space: No
Addition: No
Conversion: No

10 Floor 2 - Dining Area



Max Dimensions: 8'10" x 12'8"
Calculated Area: 103 sq. ft
Included: Yes

Heated: Yes
Finished: Yes
Enclosed: Yes
Contiguous: Yes
Permitted: Yes
Wet space: No
Addition: No
Conversion: No

11 Floor 2 - Bedroom



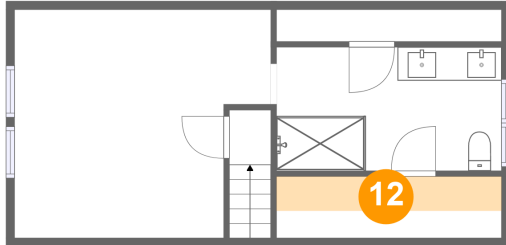
Max Dimensions: 11'1" x 10'7"
Calculated Area: 117 sq. ft
Included: Yes

Heated: Yes
Finished: Yes
Enclosed: Yes
Contiguous: Yes
Permitted: Yes
Wet space: No
Addition: No
Conversion: No

Home report

1608 North 38th Street, Wallingford, Seattle, King County,
Washington, United States, 98103

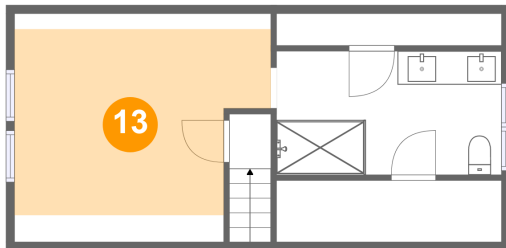
12 Floor 3 - W.I.C.



Max Dimensions: 13'5" x 3'8"
Calculated Area: 27 sq. ft
Included: Yes

Heated: Yes
Finished: Yes
Enclosed: Yes
Contiguous: Yes
Permitted: Yes
Wet space: No
Addition: No
Conversion: No

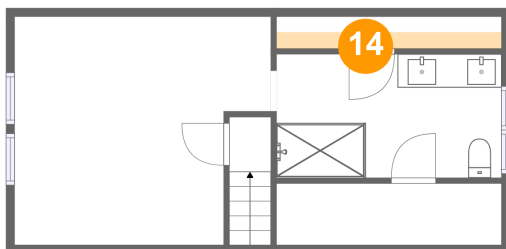
13 Floor 3 - Primary Bedroom



Max Dimensions: 15'3" x 13'7"
Calculated Area: 151 sq. ft
Included: Yes

Heated: Yes
Finished: Yes
Enclosed: Yes
Contiguous: Yes
Permitted: Yes
Wet space: No
Addition: No
Conversion: No

14 Floor 3 - W.I.C.

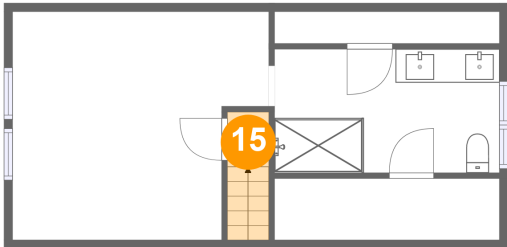


Max Dimensions: 13'5" x 1'11"
Calculated Area: 13 sq. ft
Included: Yes

Heated: Yes
Finished: Yes
Enclosed: Yes
Contiguous: Yes
Permitted: Yes
Wet space: No
Addition: No
Conversion: No

1608 North 38th Street, Wallingford, Seattle, King County,
Washington, United States, 98103

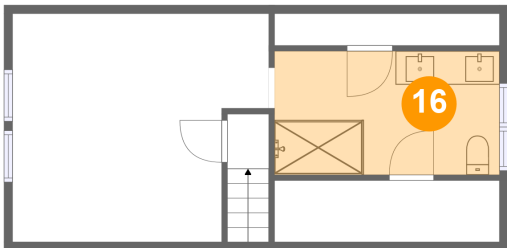
15 Floor 3 - Hall



Max Dimensions: 2'6" x 3'3"
Calculated Area: 19 sq. ft
Included: Yes

Heated: Yes
Finished: Yes
Enclosed: Yes
Contiguous: Yes
Permitted: Yes
Wet space: No
Addition: No
Conversion: No

16 Floor 3 - Bath



Max Dimensions: 13'5" x 7'4"
Calculated Area: 99 sq. ft
Included: Yes

Heated: Yes
Finished: Yes
Enclosed: Yes
Contiguous: Yes
Permitted: Yes
Wet space: Yes
Addition: No
Conversion: No