

343 CLARK AVE. W - SUITE 1404



lisa graham
— REALTOR® —





WELCOME TO 343 CLARK AVE. W. - SUITE 1404

Welcome to Conservatory Condos, where this rare offering presents almost 2,500 square feet of beautifully designed living space. This grand, sun-filled two-bedroom plus den suite features one of the largest floor plans in the building, offering generously scaled principal rooms and a highly functional layout ideal for both everyday living and entertaining.

The huge, bright eat-in kitchen is thoughtfully appointed with a built-in pantry and ample room for casual family dining. You will love the kitchen office nook with exceptional views of the neighbourhood below. The kitchen also has two walkouts to the spacious balcony. Entering the grand scale of the living room and dining rooms with spectacular views makes every day living a delightful experience.



THE DETAILS:

Maintenance Fee: 1510.46

Taxes: 6345.07

Parking Spots: Level A - #79 & #80

Locker: Level A - #201

343Clark1404.com

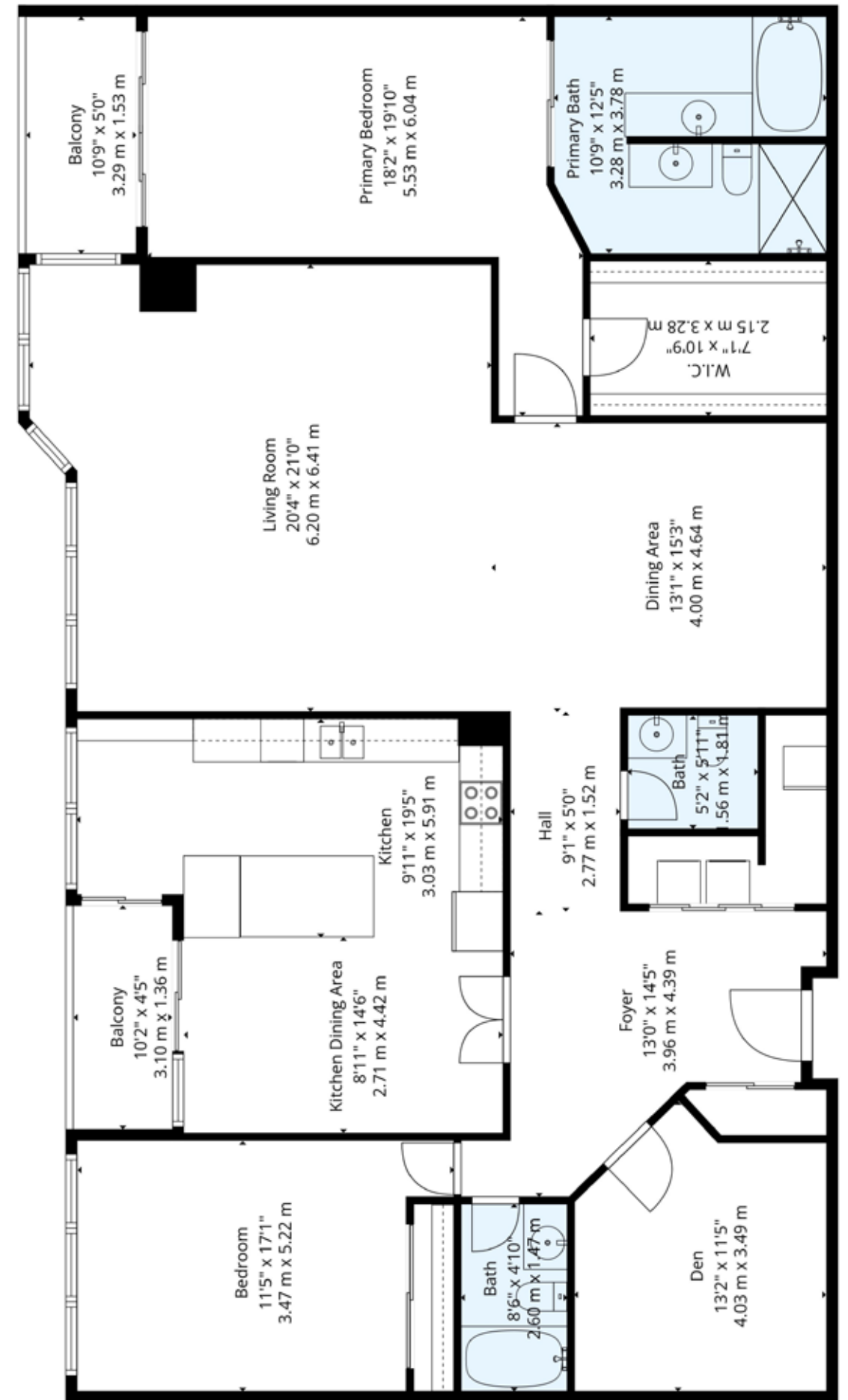




Residents of The Conservatory enjoy access to an impressive selection of amenities, including an indoor swimming pool, sauna, fully equipped fitness centre, squash and racquetball courts, billiards room, ping pong facilities, party room, and dedicated card and mahjong rooms. The building also offers a Sabbath elevator, guest suite accommodations, and a beautifully landscaped outdoor seating area complete with a gazebo.

Ideally situated, the property is just steps from Sobeys, Shoppers Drug Mart, Promenade Mall, nearby parks, and the Garnet Williams Community Centre, with convenient walking access to the local synagogue. A 24/7 security gatehouse ensures peace of mind and a secure living environment year-round.

For added convenience, all utilities—including gas, electricity, water, central air conditioning, and cable television—are included in the monthly condominium fee, providing a truly comprehensive and worry-free lifestyle.





For more information visit: 343Clark1404.com

LISA GRAHAM

Sales Representative

647.203.1800 (Direct)

416.489.2121 (Office)

lisa@lisagrahamhomes.com

lisagraham
— REALTOR® —



Integrity. Passion. Results!



JOHNSTON & DANIEL

A DIVISION OF ROYAL LEPAGE REAL ESTATE SERVICES LTD., BROKERAGE

477 MOUNT PLEASANT ROAD, TORONTO M4S 2L9

Royal LePage Real Estate Services Ltd./Johnston & Daniel Division, Brokerage respects the contracts of its competitors. Prospective buyers and sellers should satisfy themselves as to the accuracy of the information contained in this feature sheet. All information and statements contained herein, provided by the Brokerage regarding property for sale, rental or financing is from sources deemed reliable and assumed correct, but no warranty or representation is made as to the accuracy thereof and same is submitted subject to errors, omissions, changes in price, rental or other conditions, prior sale or withdrawal without notice. All measurements are approximate.