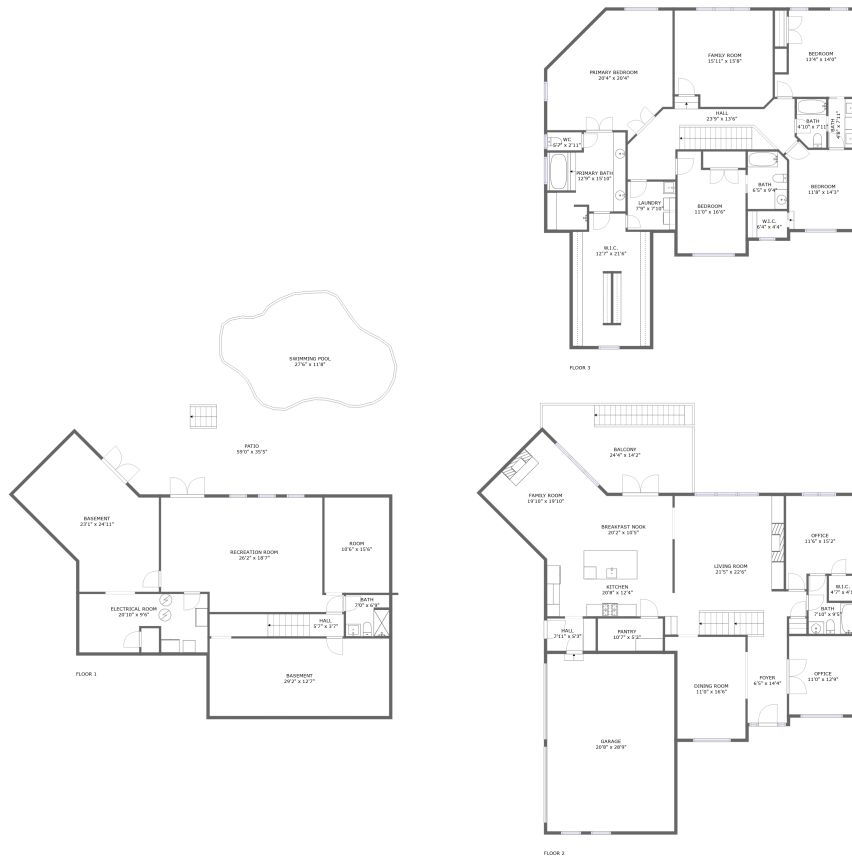


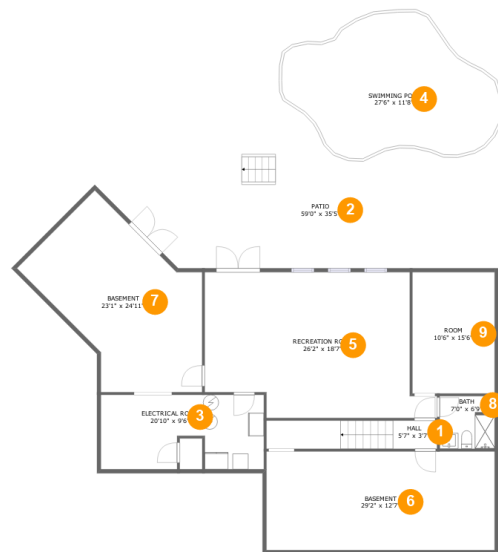
5245 Wilshire Crossing, Cumming, GA, US



Property summary

 **1** Garages
  **4** Bedrooms
  **5** Bathrooms
  **0** Half baths

 **3** Floors
  **5,500** Gross living area sqft
  **8,053** Total sqft

5245 Wilshire Crossing, Cumming, GA, US**Room dimensions****Floor 1****Total sqft: 3127 Living area: 1611**

#		Dimensions	sqft	Counted as living area
1	Hall	5'7" x 3'7"	79 sq. ft	Yes
2	Patio	59'0" x 35'5"	1674 sq. ft	No
3	Electrical Room	20'10" x 9'6"	182 sq. ft	No
4	Swimming Pool	27'6" x 11'8"	372 sq. ft	No
5	Recreation Room	26'2" x 18'7"	470 sq. ft	Yes
6	Basement	29'2" x 12'7"	367 sq. ft	Yes
7	Basement	23'1" x 24'11"	359 sq. ft	Yes
8	Bath	7'0" x 6'9"	46 sq. ft	Yes
9	Room	10'6" x 15'6"	162 sq. ft	Yes

5245 Wilshire Crossing, Cumming, GA, US**Room dimensions**

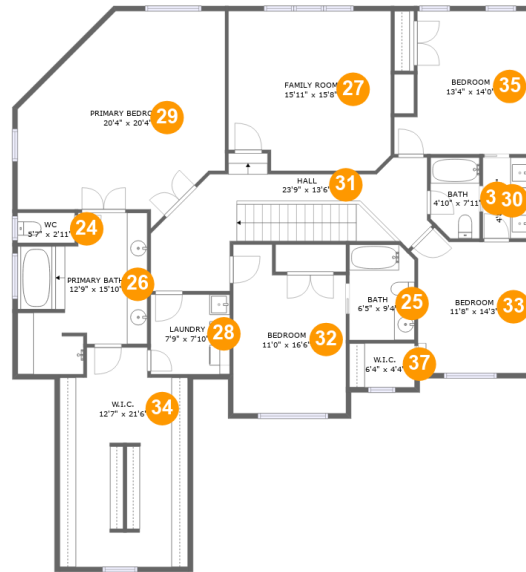
Floor 2

Total sqft: 2791 Living area: 1880

#		Dimensions	sqft	Counted as living area
10	Dining Room	11'0" x 16'6"	187 sq. ft	Yes
11	Balcony	24'4" x 14'2"	284 sq. ft	No
12	W.I.C.	4'7" x 4'1"	19 sq. ft	Yes
13	Office	11'6" x 15'2"	154 sq. ft	Yes
14	Family Room	19'10" x 19'10"	208 sq. ft	Yes
15	Kitchen	20'8" x 12'4"	196 sq. ft	Yes
16	Bath	7'10" x 9'5"	53 sq. ft	Yes
17	Breakfast Nook	20'2" x 10'5"	161 sq. ft	Yes
18	Foyer	6'5" x 14'4"	91 sq. ft	Yes
19	Garage	20'8" x 28'9"	594 sq. ft	No
20	Office	11'0" x 12'9"	140 sq. ft	Yes

5245 Wilshire Crossing, Cumming, GA, US

#		Dimensions	sqft	Counted as living area
21	Living Room	21'5" x 22'6"	415 sq. ft	Yes
22	Pantry	10'7" x 5'3"	55 sq. ft	Yes
23	Hall	7'11" x 5'3"	42 sq. ft	Yes

5245 Wilshire Crossing, Cumming, GA, US**Room dimensions**

Floor 3

Total sqft: 2135 Living area: 2009

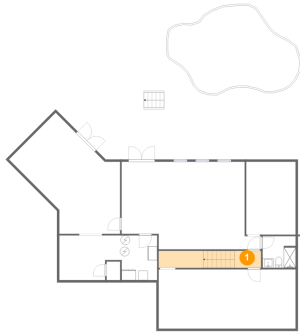
#		Dimensions	sqft	Counted as living area
24	WC	5'7" x 2'11"	17 sq. ft	Yes
25	Bath	6'5" x 9'4"	59 sq. ft	Yes
26	Primary Bath	12'9" x 15'10"	161 sq. ft	Yes
27	Family Room	15'11" x 15'8"	239 sq. ft	Yes
28	Laundry	7'9" x 7'10"	60 sq. ft	Yes
29	Primary Bedroom	20'4" x 20'4"	337 sq. ft	Yes
30	Bath	4'8" x 7'11"	37 sq. ft	Yes
31	Hall	23'9" x 13'6"	213 sq. ft	Yes
32	Bedroom	11'0" x 16'6"	161 sq. ft	Yes
33	Bedroom	11'8" x 14'3"	144 sq. ft	Yes
34	W.I.C.	12'7" x 21'6"	146 sq. ft	Yes

5245 Wilshire Crossing, Cumming, GA, US

#		Dimensions	sqft	Counted as living area
35	Bedroom	13'4" x 14'0"	163 sq. ft	Yes
36	Bath	4'10" x 7'11"	36 sq. ft	Yes
37	W.I.C.	6'4" x 4'4"	27 sq. ft	Yes

5245 Wilshire Crossing, Cumming, GA, US

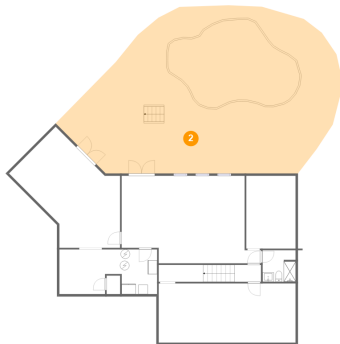
1 Floor 1 - Hall



Dimensions: 5'7" x 3'7"
Area: 79 sq. ft
Counted as living area: Yes

Heated: Yes
Finished: Yes
Enclosed: Yes
Contiguous: Yes
Permitted: Yes
Wet space: No
Addition: No
Conversion: No

2 Floor 1 - Patio



Dimensions: 59'0" x 35'5"
Area: 1674 sq. ft
Counted as living area: No

Heated: No
Finished: Yes
Enclosed: No
Contiguous: Yes
Permitted: Yes
Wet space: No
Addition: No
Conversion: No

5245 Wilshire Crossing, Cumming, GA, US

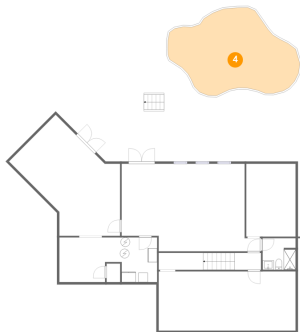
3 Floor 1 - Electrical Room



Dimensions: 20'10" x 9'6"
Area: 182 sq. ft
Counted as living area: No

Heated: No
Finished: No
Enclosed: Yes
Contiguous: Yes
Permitted: Yes
Wet space: No
Addition: No
Conversion: No

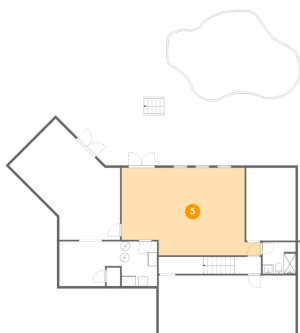
4 Floor 1 - Swimming Pool



Dimensions: 27'6" x 11'8"
Area: 372 sq. ft
Counted as living area: No

Heated: No
Finished: No
Enclosed: No
Contiguous: Yes
Permitted: No
Wet space: No
Addition: No
Conversion: No

5 Floor 1 - Recreation Room

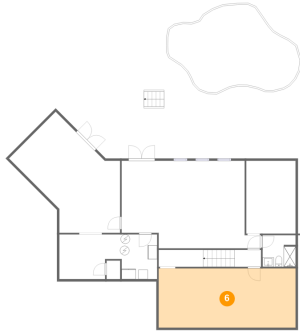


Dimensions: 26'2" x 18'7"
Area: 470 sq. ft
Counted as living area: Yes

Heated: Yes
Finished: Yes
Enclosed: Yes
Contiguous: Yes
Permitted: Yes
Wet space: No
Addition: No
Conversion: No

5245 Wilshire Crossing, Cumming, GA, US

6 Floor 1 - Basement



Dimensions: 29'2" x 12'7"
Area: 367 sq. ft
Counted as living area: Yes

Heated: Yes
Finished: Yes
Enclosed: Yes
Contiguous: Yes
Permitted: Yes
Wet space: No
Addition: No
Conversion: No

7 Floor 1 - Basement



Dimensions: 23'1" x 24'11"
Area: 359 sq. ft
Counted as living area: Yes

Heated: Yes
Finished: Yes
Enclosed: Yes
Contiguous: Yes
Permitted: Yes
Wet space: No
Addition: No
Conversion: No

8 Floor 1 - Bath

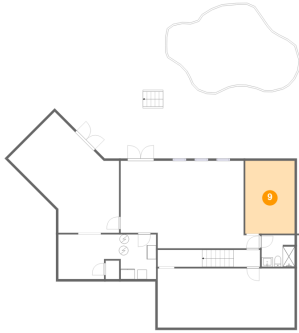


Dimensions: 7'0" x 6'9"
Area: 46 sq. ft
Counted as living area: Yes

Heated: Yes
Finished: Yes
Enclosed: Yes
Contiguous: Yes
Permitted: Yes
Wet space: Yes
Addition: No
Conversion: No

5245 Wilshire Crossing, Cumming, GA, US

9 Floor 1 - Room



Dimensions: 10'6" x 15'6"
Area: 162 sq. ft
Counted as living area: Yes

Heated: Yes
Finished: Yes
Enclosed: Yes
Contiguous: Yes
Permitted: Yes
Wet space: No
Addition: No
Conversion: No

10 Floor 2 - Dining Room



Dimensions: 11'0" x 16'6"
Area: 187 sq. ft
Counted as living area: Yes

Heated: Yes
Finished: Yes
Enclosed: Yes
Contiguous: Yes
Permitted: Yes
Wet space: No
Addition: No
Conversion: No

11 Floor 2 - Balcony



Dimensions: 24'4" x 14'2"
Area: 284 sq. ft
Counted as living area: No

Heated: No
Finished: Yes
Enclosed: No
Contiguous: Yes
Permitted: Yes
Wet space: No
Addition: No
Conversion: No

5245 Wilshire Crossing, Cumming, GA, US

12 Floor 2 - W.I.C.



Dimensions: 4'7" x 4'1"
Area: 19 sq. ft
Counted as living area: Yes

Heated: Yes
Finished: Yes
Enclosed: Yes
Contiguous: Yes
Permitted: Yes
Wet space: No
Addition: No
Conversion: No

13 Floor 2 - Office



Dimensions: 11'6" x 15'2"
Area: 154 sq. ft
Counted as living area: Yes

Heated: Yes
Finished: Yes
Enclosed: Yes
Contiguous: Yes
Permitted: Yes
Wet space: No
Addition: No
Conversion: No

14 Floor 2 - Family Room



Dimensions: 19'10" x 19'10"
Area: 208 sq. ft
Counted as living area: Yes

Heated: Yes
Finished: Yes
Enclosed: Yes
Contiguous: Yes
Permitted: Yes
Wet space: No
Addition: No
Conversion: No

5245 Wilshire Crossing, Cumming, GA, US

15 Floor 2 - Kitchen



Dimensions: 20'8" x 12'4"
Area: 196 sq. ft
Counted as living area: Yes

Heated: Yes
Finished: Yes
Enclosed: Yes
Contiguous: Yes
Permitted: Yes
Wet space: No
Addition: No
Conversion: No

16 Floor 2 - Bath



Dimensions: 7'10" x 9'5"
Area: 53 sq. ft
Counted as living area: Yes

Heated: Yes
Finished: Yes
Enclosed: Yes
Contiguous: Yes
Permitted: Yes
Wet space: Yes
Addition: No
Conversion: No

17 Floor 2 - Breakfast Nook



Dimensions: 20'2" x 10'5"
Area: 161 sq. ft
Counted as living area: Yes

Heated: Yes
Finished: Yes
Enclosed: Yes
Contiguous: Yes
Permitted: Yes
Wet space: No
Addition: No
Conversion: No

5245 Wilshire Crossing, Cumming, GA, US

18 Floor 2 - Foyer



Dimensions: 6'5" x 14'4"
Area: 91 sq. ft
Counted as living area: Yes

Heated: Yes
Finished: Yes
Enclosed: Yes
Contiguous: Yes
Permitted: Yes
Wet space: No
Addition: No
Conversion: No

19 Floor 2 - Garage



Dimensions: 20'8" x 28'9"
Area: 594 sq. ft
Counted as living area: No

Heated: No
Finished: No
Enclosed: Yes
Contiguous: Yes
Permitted: Yes
Wet space: No
Addition: No
Conversion: No

20 Floor 2 - Office



Dimensions: 11'0" x 12'9"
Area: 140 sq. ft
Counted as living area: Yes

Heated: Yes
Finished: Yes
Enclosed: Yes
Contiguous: Yes
Permitted: Yes
Wet space: No
Addition: No
Conversion: No

5245 Wilshire Crossing, Cumming, GA, US

21 Floor 2 - Living Room



Dimensions: 21'5" x 22'6"
Area: 415 sq. ft
Counted as living area: Yes

Heated: Yes
Finished: Yes
Enclosed: Yes
Contiguous: Yes
Permitted: Yes
Wet space: No
Addition: No
Conversion: No

22 Floor 2 - Pantry



Dimensions: 10'7" x 5'3"
Area: 55 sq. ft
Counted as living area: Yes

Heated: Yes
Finished: Yes
Enclosed: Yes
Contiguous: Yes
Permitted: Yes
Wet space: No
Addition: No
Conversion: No

23 Floor 2 - Hall

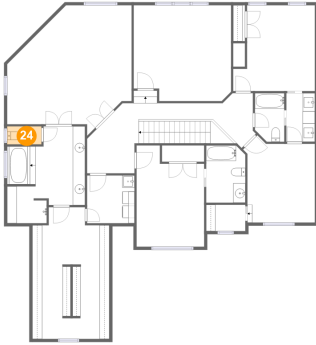


Dimensions: 7'11" x 5'3"
Area: 42 sq. ft
Counted as living area: Yes

Heated: Yes
Finished: Yes
Enclosed: Yes
Contiguous: Yes
Permitted: Yes
Wet space: No
Addition: No
Conversion: No

5245 Wilshire Crossing, Cumming, GA, US

24 Floor 3 - WC



Dimensions: 5'7" x 2'11"
Area: 17 sq. ft
Counted as living area: Yes

Heated: Yes
Finished: Yes
Enclosed: Yes
Contiguous: Yes
Permitted: Yes
Wet space: Yes
Addition: No
Conversion: No

25 Floor 3 - Bath



Dimensions: 6'5" x 9'4"
Area: 59 sq. ft
Counted as living area: Yes

Heated: Yes
Finished: Yes
Enclosed: Yes
Contiguous: Yes
Permitted: Yes
Wet space: Yes
Addition: No
Conversion: No

26 Floor 3 - Primary Bath

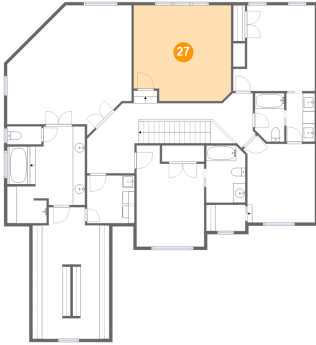


Dimensions: 12'9" x 15'10"
Area: 161 sq. ft
Counted as living area: Yes

Heated: Yes
Finished: Yes
Enclosed: Yes
Contiguous: Yes
Permitted: Yes
Wet space: Yes
Addition: No
Conversion: No

5245 Wilshire Crossing, Cumming, GA, US

27 Floor 3 - Family Room



Dimensions: 15'11" x 15'8"
Area: 239 sq. ft
Counted as living area: Yes

Heated: Yes
Finished: Yes
Enclosed: Yes
Contiguous: Yes
Permitted: Yes
Wet space: No
Addition: No
Conversion: No

28 Floor 3 - Laundry



Dimensions: 7'9" x 7'10"
Area: 60 sq. ft
Counted as living area: Yes

Heated: Yes
Finished: Yes
Enclosed: Yes
Contiguous: Yes
Permitted: Yes
Wet space: No
Addition: No
Conversion: No

29 Floor 3 - Primary Bedroom

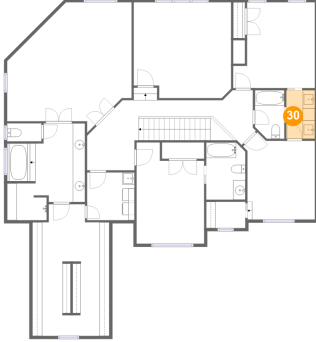


Dimensions: 20'4" x 20'4"
Area: 337 sq. ft
Counted as living area: Yes

Heated: Yes
Finished: Yes
Enclosed: Yes
Contiguous: Yes
Permitted: Yes
Wet space: No
Addition: No
Conversion: No

5245 Wilshire Crossing, Cumming, GA, US

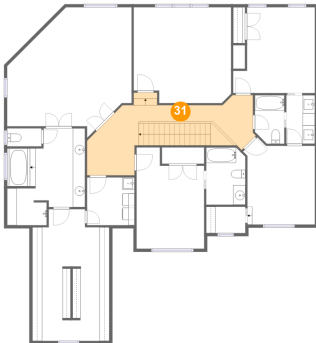
30 Floor 3 - Bath



Dimensions: 4'8" x 7'11"
Area: 37 sq. ft
Counted as living area: Yes

Heated: Yes
Finished: Yes
Enclosed: Yes
Contiguous: Yes
Permitted: Yes
Wet space: Yes
Addition: No
Conversion: No

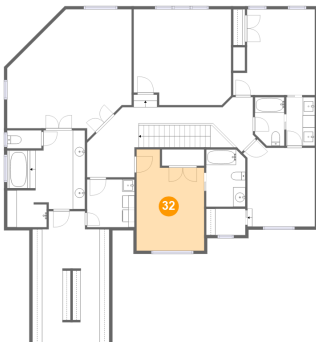
31 Floor 3 - Hall



Dimensions: 23'9" x 13'6"
Area: 213 sq. ft
Counted as living area: Yes

Heated: Yes
Finished: Yes
Enclosed: Yes
Contiguous: Yes
Permitted: Yes
Wet space: No
Addition: No
Conversion: No

32 Floor 3 - Bedroom

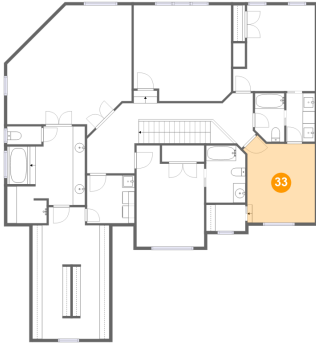


Dimensions: 11'0" x 16'6"
Area: 161 sq. ft
Counted as living area: Yes

Heated: Yes
Finished: Yes
Enclosed: Yes
Contiguous: Yes
Permitted: Yes
Wet space: No
Addition: No
Conversion: No

5245 Wilshire Crossing, Cumming, GA, US

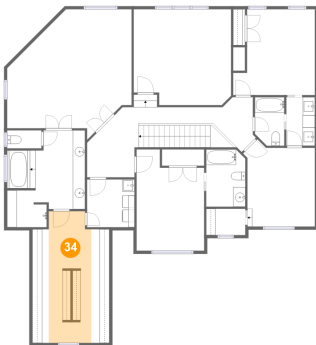
33 Floor 3 - Bedroom



Dimensions: 11'8" x 14'3"
Area: 144 sq. ft
Counted as living area: Yes

Heated: Yes
Finished: Yes
Enclosed: Yes
Contiguous: Yes
Permitted: Yes
Wet space: No
Addition: No
Conversion: No

34 Floor 3 - W.I.C.



Dimensions: 12'7" x 21'6"
Area: 146 sq. ft
Counted as living area: Yes

Heated: Yes
Finished: Yes
Enclosed: Yes
Contiguous: Yes
Permitted: Yes
Wet space: No
Addition: No
Conversion: No

35 Floor 3 - Bedroom



Dimensions: 13'4" x 14'0"
Area: 163 sq. ft
Counted as living area: Yes

Heated: Yes
Finished: Yes
Enclosed: Yes
Contiguous: Yes
Permitted: Yes
Wet space: No
Addition: No
Conversion: No

36 Floor 3 - Bath



Dimensions: 4'10" x 7'11"
Area: 36 sq. ft
Counted as living area: Yes

Heated: Yes
Finished: Yes
Enclosed: Yes
Contiguous: Yes
Permitted: Yes
Wet space: Yes
Addition: No
Conversion: No

37 Floor 3 - W.I.C.



Dimensions: 6'4" x 4'4"
Area: 27 sq. ft
Counted as living area: Yes

Heated: Yes
Finished: Yes
Enclosed: Yes
Contiguous: Yes
Permitted: Yes
Wet space: No
Addition: No
Conversion: No