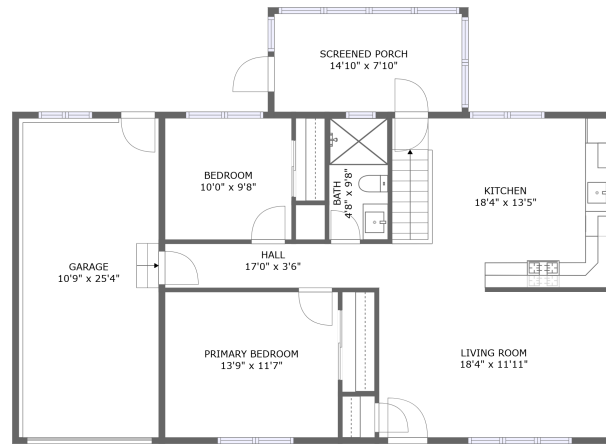
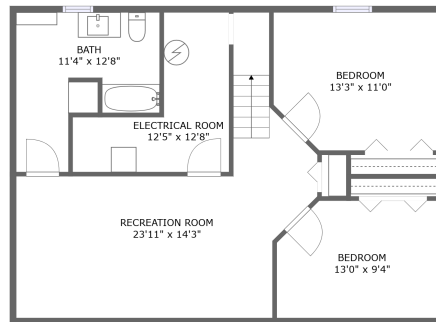


206 Ely St, Woodbine, IA, US



FLOOR 2



FLOOR 1

Property Summary

 **1** garages

 **4** bedrooms

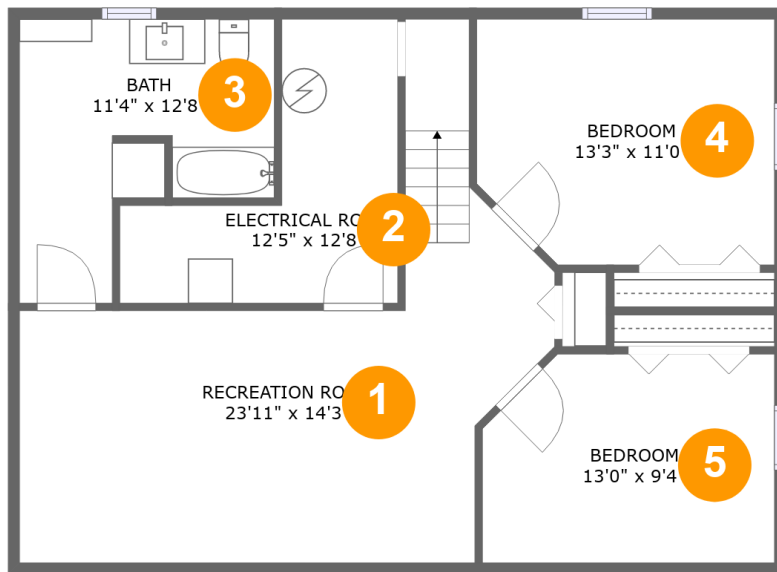
 **2** bathrooms

 **0** half baths

 **2** floors

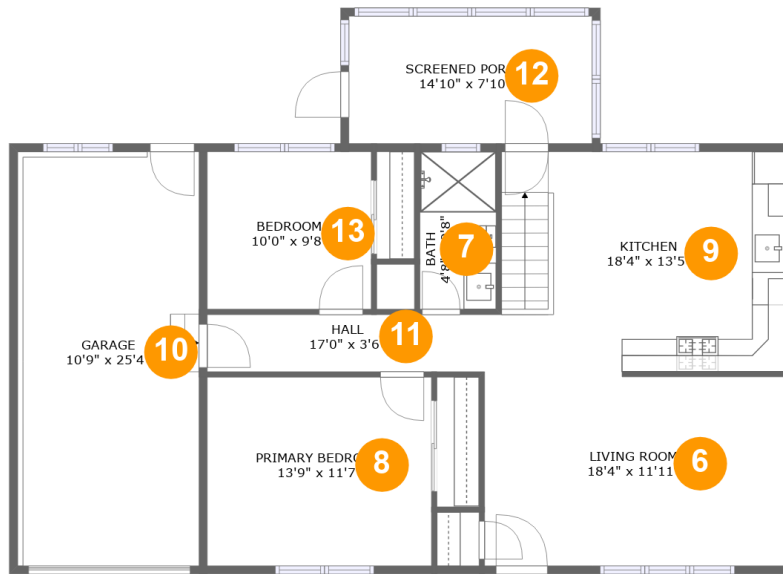
 **1,723** Gross Living Area sqft

 **2,272** total sqft

206 Ely St, Woodbine, IA, US**Room Dimensions****Floor 1****Total sqft: 877****Living area: 766**

#	Room name	Dimensions	Area (sqft)	Counted as Living Area
1	Recreation Room	23'11" x 14'3"	292 sq. ft	Yes
2	Electrical Room	12'5" x 12'8"	97 sq. ft	No
3	Bath	11'4" x 12'8"	109 sq. ft	Yes
4	Bedroom	13'3" x 11'0"	139 sq. ft	Yes
5	Bedroom	13'0" x 9'4"	116 sq. ft	Yes

206 Ely St, Woodbine, IA, US



Room Dimensions

Floor 2

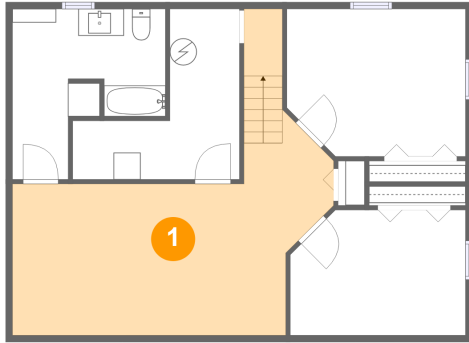
Total sqft: 1395

Living area: 957

#	Room name	Dimensions	Area (sqft)	Counted as Living Area
6	Living Room	18'4" x 11'11"	215 sq. ft	Yes
7	Bath	4'8" x 9'8"	45 sq. ft	Yes
8	Primary Bedroom	13'9" x 11'7"	158 sq. ft	Yes
9	Kitchen	18'4" x 13'5"	237 sq. ft	Yes
10	Garage	10'9" x 25'4"	282 sq. ft	No
11	Hall	17'0" x 3'6"	59 sq. ft	Yes
12	Screened Porch	14'10" x 7'10"	116 sq. ft	No
13	Bedroom	10'0" x 9'8"	97 sq. ft	Yes

206 Ely St, Woodbine, IA, US

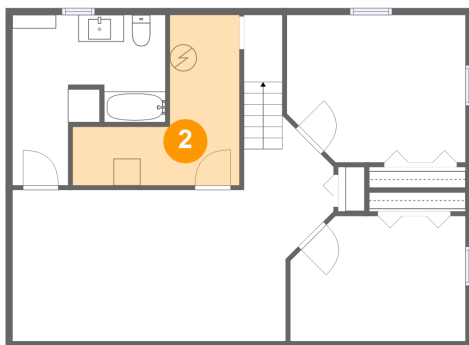
1 Floor 1 - Recreation Room



Dimensions: 23'11" x 14'3"
Area: 292 sq. ft
Counted as Living Area:
Yes

Heated: Yes
Finished: Yes
Enclosed: Yes
Contiguous:
Yes
Permitted: Yes
Wet Space: No
Addition: No
Conversion: No

2 Floor 1 - Electrical Room

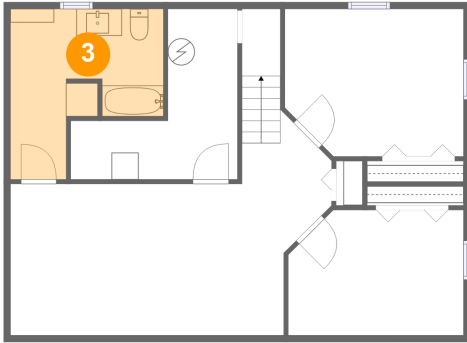


Dimensions: 12'5" x 12'8"
Area: 97 sq. ft
Counted as Living Area: No

Heated: No
Finished: No
Enclosed: Yes
Contiguous: Yes
Permitted: Yes
Wet Space: No
Addition: No
Conversion: No

206 Ely St, Woodbine, IA, US

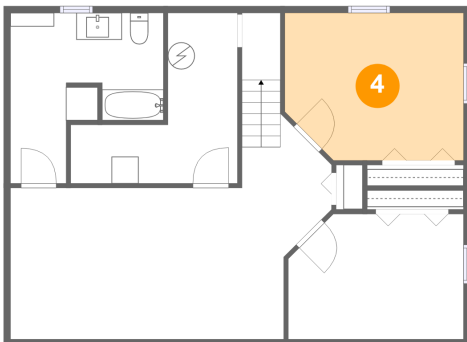
3 Floor 1 - Bath



Dimensions: 11'4" x 12'8"
Area: 109 sq. ft
Counted as Living Area:
Yes

Heated: Yes
Finished: Yes
Enclosed: Yes
Contiguous:
Yes
Permitted: Yes
Wet Space: Yes
Addition: No
Conversion: No

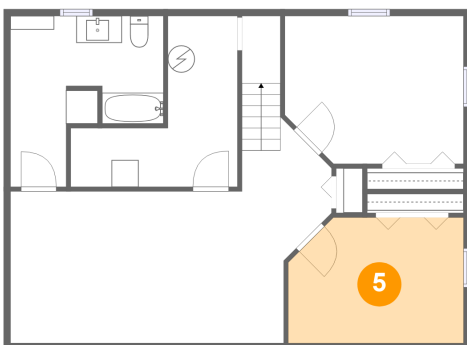
4 Floor 1 - Bedroom



Dimensions: 13'3" x 11'0"
Area: 139 sq. ft
Counted as Living Area:
Yes

Heated: Yes
Finished: Yes
Enclosed: Yes
Contiguous:
Yes
Permitted: Yes
Wet Space: No
Addition: No
Conversion: No

5 Floor 1 - Bedroom

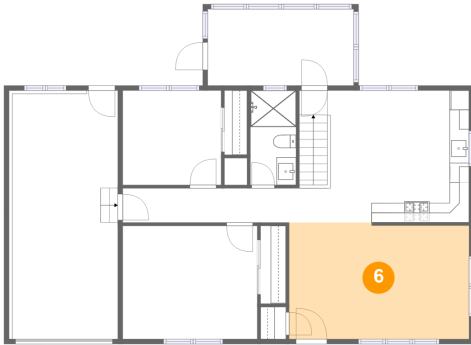


Dimensions: 13'0" x 9'4"
Area: 116 sq. ft
Counted as Living Area:
Yes

Heated: Yes
Finished: Yes
Enclosed: Yes
Contiguous:
Yes
Permitted: Yes
Wet Space: No
Addition: No
Conversion: No

206 Ely St, Woodbine, IA, US

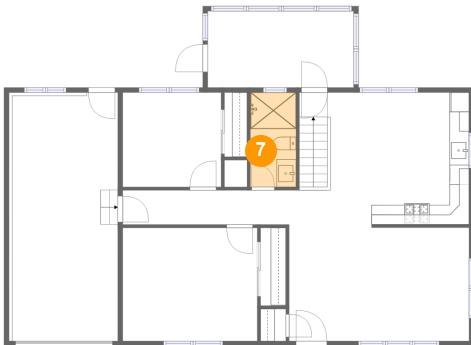
6 Floor 2 - Living Room



Dimensions: 18'4" x 11'11"
Area: 215 sq. ft
Counted as Living Area:
Yes

Heated: Yes
Finished: Yes
Enclosed: Yes
Contiguous:
Yes
Permitted: Yes
Wet Space: No
Addition: No
Conversion: No

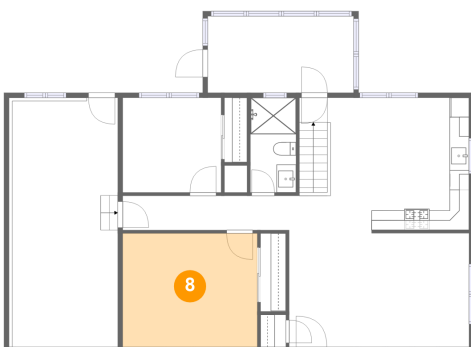
7 Floor 2 - Bath



Dimensions: 4'8" x 9'8"
Area: 45 sq. ft
Counted as Living Area:
Yes

Heated: Yes
Finished: Yes
Enclosed: Yes
Contiguous:
Yes
Permitted: Yes
Wet Space: Yes
Addition: No
Conversion: No

8 Floor 2 - Primary Bedroom

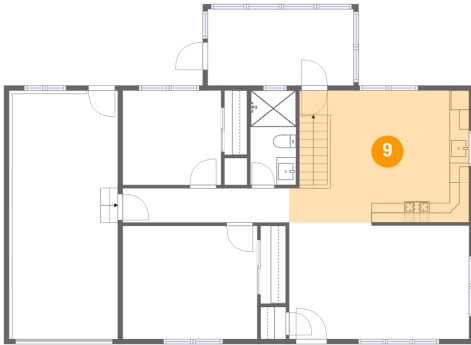


Dimensions: 13'9" x 11'7"
Area: 158 sq. ft
Counted as Living Area:
Yes

Heated: Yes
Finished: Yes
Enclosed: Yes
Contiguous:
Yes
Permitted: Yes
Wet Space: No
Addition: No
Conversion: No

206 Ely St, Woodbine, IA, US

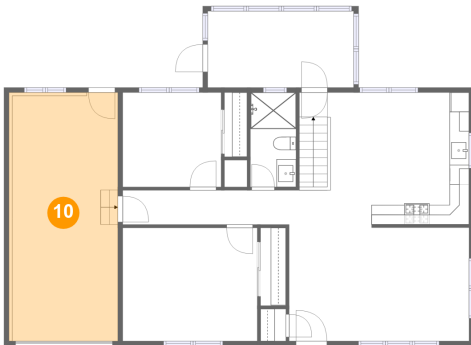
9 Floor 2 - Kitchen



Dimensions: 18'4" x 13'5"
Area: 237 sq. ft
Counted as Living Area:
Yes

Heated: Yes
Finished: Yes
Enclosed: Yes
Contiguous:
Yes
Permitted: Yes
Wet Space: No
Addition: No
Conversion: No

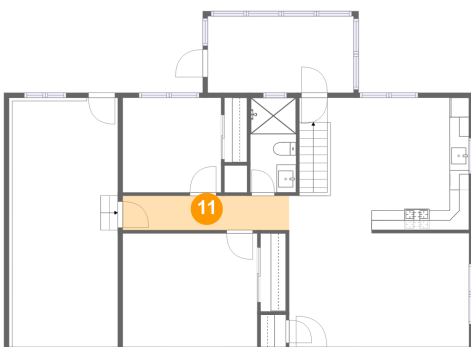
10 Floor 2 - Garage



Dimensions: 10'9" x 25'4"
Area: 282 sq. ft
Counted as Living Area: No

Heated: No
Finished: No
Enclosed: Yes
Contiguous: Yes
Permitted: Yes
Wet Space: No
Addition: No
Conversion: No

11 Floor 2 - Hall

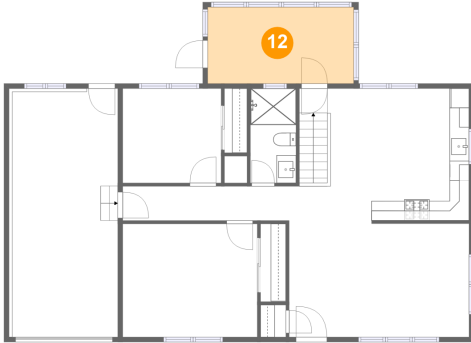


Dimensions: 17'0" x 3'6"
Area: 59 sq. ft
Counted as Living Area:
Yes

Heated: Yes
Finished: Yes
Enclosed: Yes
Contiguous:
Yes
Permitted: Yes
Wet Space: No
Addition: No
Conversion: No

206 Ely St, Woodbine, IA, US

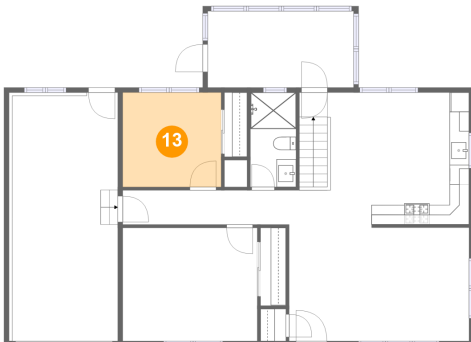
12 Floor 2 - Screened Porch



Dimensions: 14'10" x 7'10"
Area: 116 sq. ft
Counted as Living Area: No

Heated: No
Finished: Yes
Enclosed: No
Contiguous: Yes
Permitted: Yes
Wet Space: No
Addition: No
Conversion: No

13 Floor 2 - Bedroom



Dimensions: 10'0" x 9'8"
Area: 97 sq. ft
Counted as Living Area: Yes

Heated: Yes
Finished: Yes
Enclosed: Yes
Contiguous: Yes
Permitted: Yes
Wet Space: No
Addition: No
Conversion: No