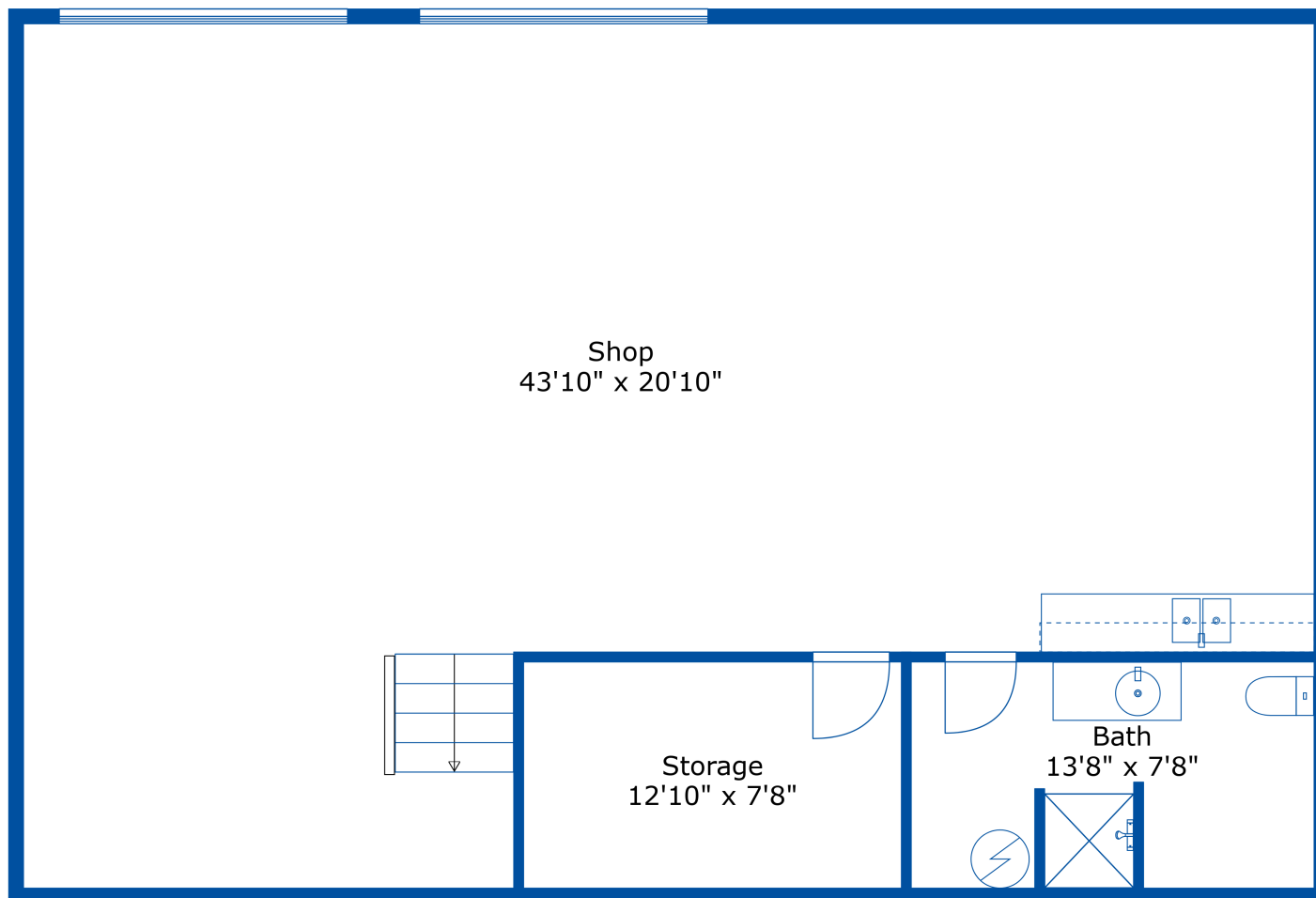




4 10200 Gray Rd

Ron Plowright
(604) 316-5975
Ron@ronplowright.com



Estimated Areas:

Below Main: 2285 sq. ft
Main Floor: 2395 sq. ft
Total: 4680 Sq. Ft

Additional Areas:

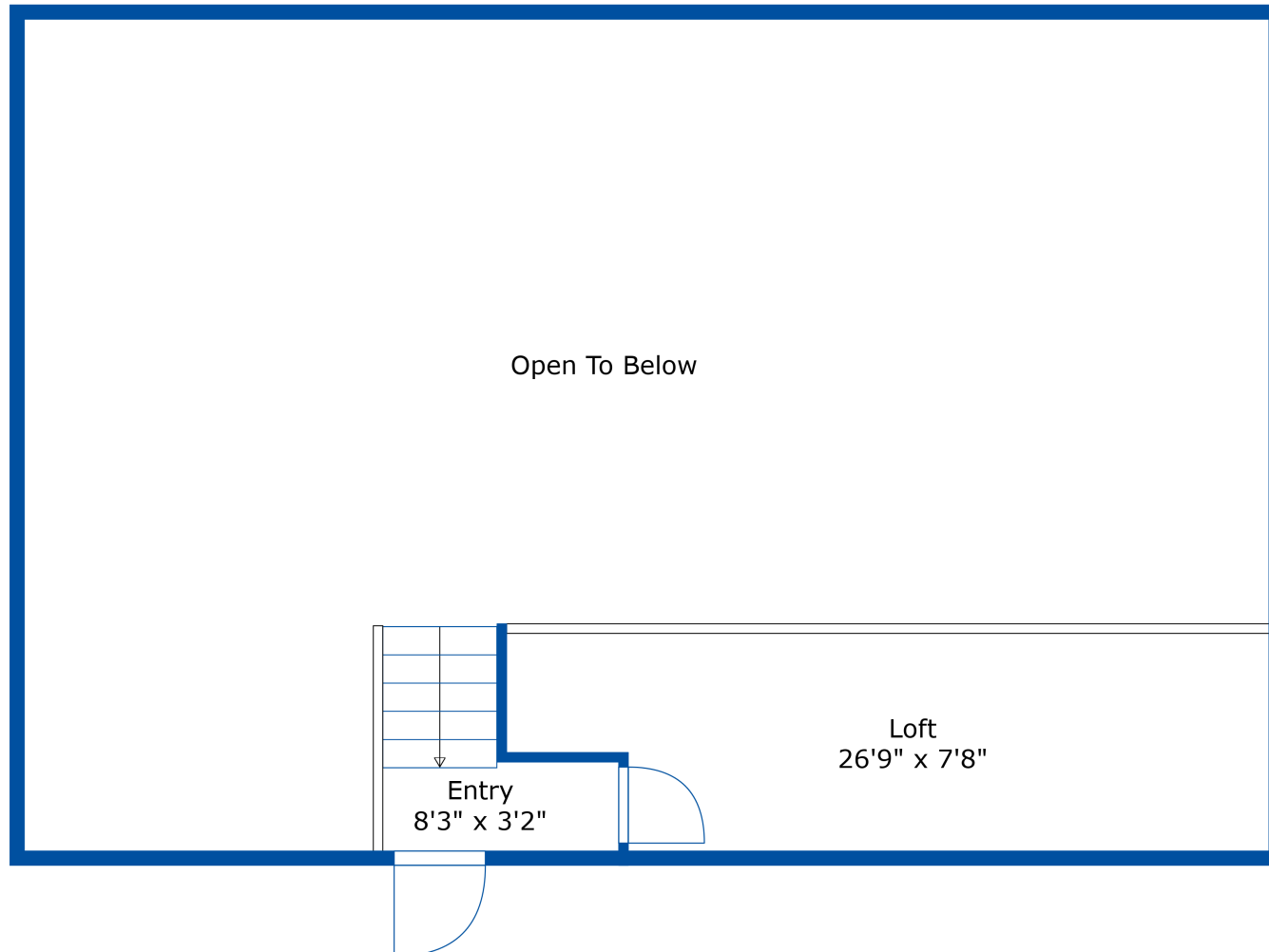
Shop: 1354 sq. ft
Loft: 270 sq. ft



4 10200 Gray Rd

Ron Plowright
(604) 316-5975

Ron@ronplowright.com



Estimated Areas:

Below Main: 2285 sq. ft
Main Floor: 2395 sq. ft
Total: 4680 Sq. Ft

Additional Areas:

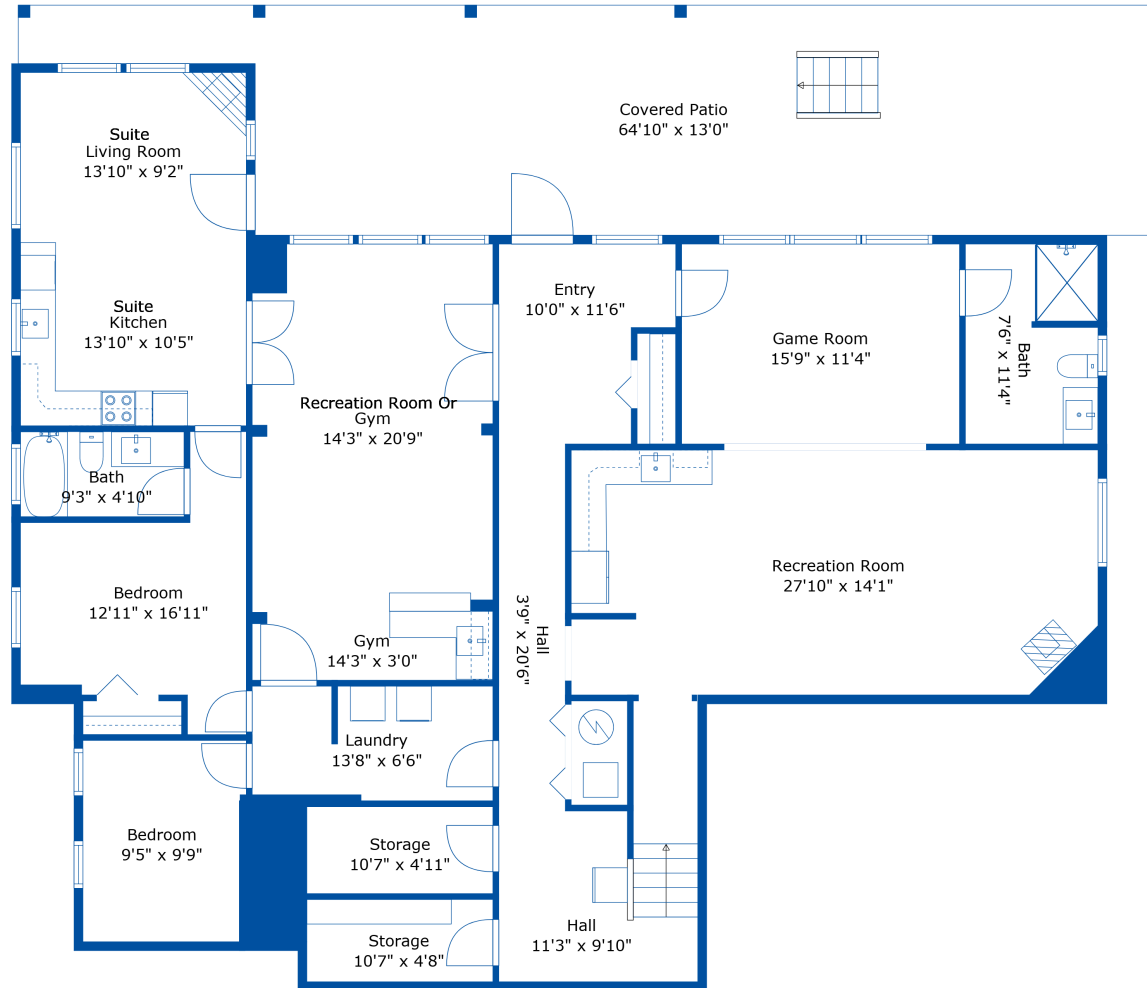
Shop: 1354 sq. ft
Loft: 270 sq. ft



4 10200 Gray Rd

Ron Plowright
(604) 316-5975

Ron@ronplowright.com



Estimated Areas:

Below Main: 2285 sq. ft

Main Floor: 2395 sq. ft

Total: 4680 Sq. Ft

Additional Areas:

Shop: 1354 sq. ft

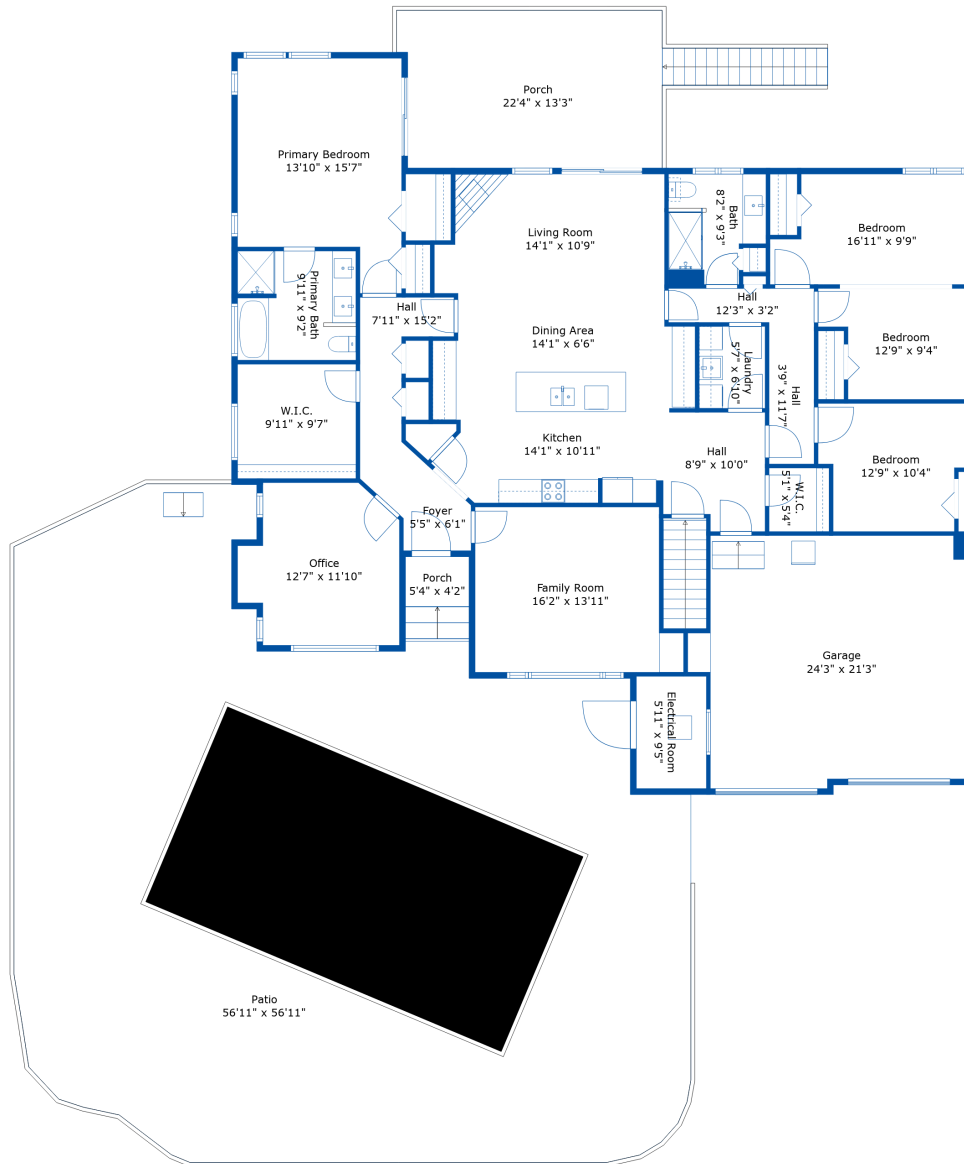
Loft: 270 sq. ft



4 10200 Gray Rd

Ron Plowright
(604) 316-5975

Ron@ronplowright.com



Estimated Areas:

Below Main: 2285 sq. ft

Main Floor: 2395 sq. ft

Total: 4680 Sq. Ft

Additional Areas:

Shop: 1354 sq. ft

Loft: 270 sq. ft



Measurements and plans provided by:
SPOTLIGHT MEDIA

E&O Insured. For advertising purposes only. Not intended for architectural or construction use. Floorplan and measurements are approximate within +/- 2% tolerance.



(604) 316-5975

Ron@ronplowright.com



Main Floor: 2395 sq.ft

Total: 4680 Sq. Ft

Additional Areas:

Loft: 270 sq. ft



SPOTLIGHT MEDIA

E&O Insured. For advertising purposes only. Not intended for architectural or construction use. Floorplan and measurements are approximate within +/- 2% tolerance.