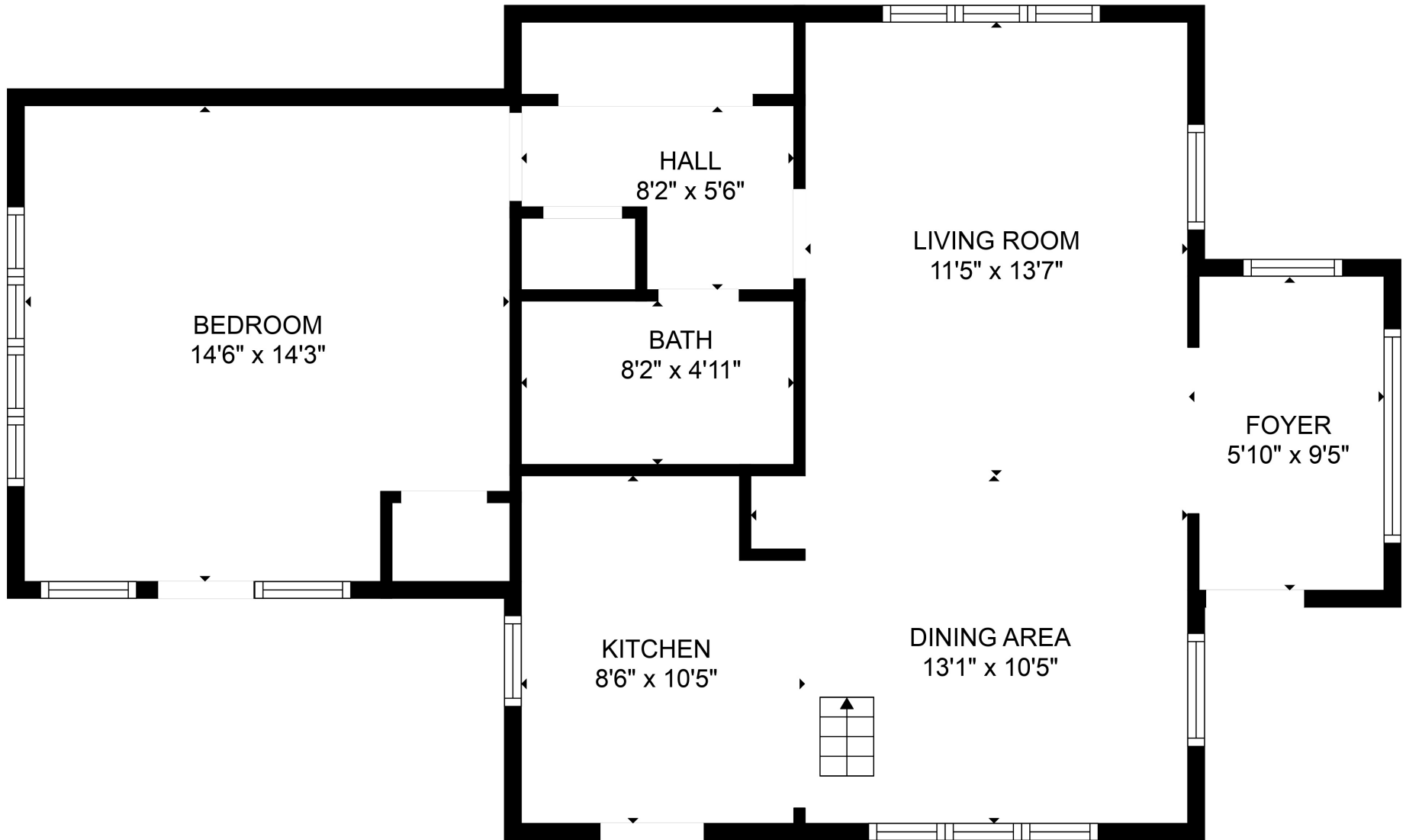


TOTAL: 1280 sq. ft
 Below Ground: 534 sq. ft, FLOOR 2: 746 sq. ft

Floor plans are intended to give a general indication of the property layout. Sizes and dimensions are estimate, Actual may vary.

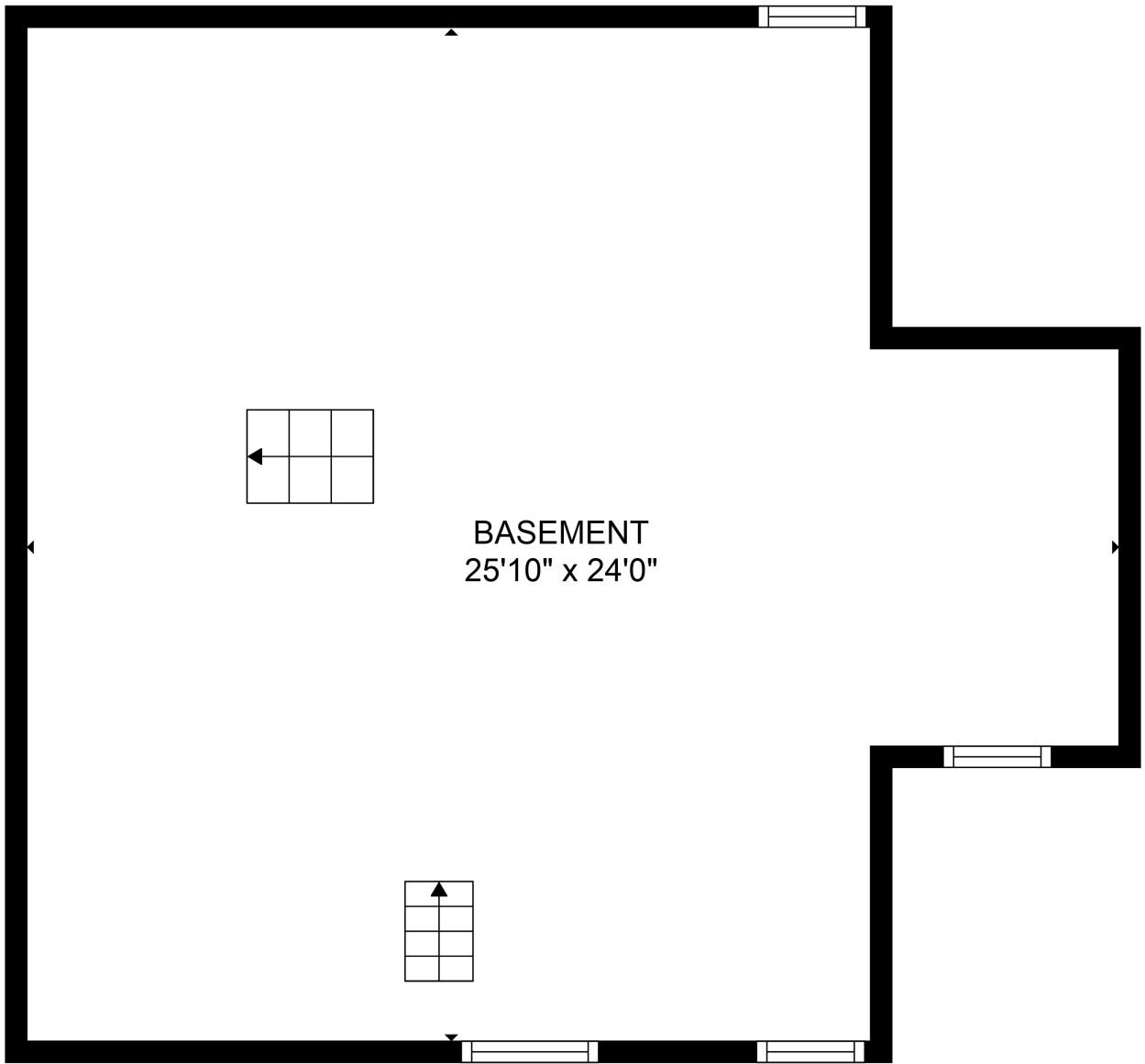




TOTAL: 1280 sq. ft
Below Ground: 534 sq. ft, FLOOR 2: 746 sq. ft

Floor plans are intended to give a general indication of the property layout. Sizes and dimensions are estimate, Actual may vary.





TOTAL: 1280 sq. ft
Below Ground: 534 sq. ft, FLOOR 2: 746 sq. ft

Floor plans are intended to give a general indication of the property layout. Sizes and dimensions are estimate, Actual may vary.

