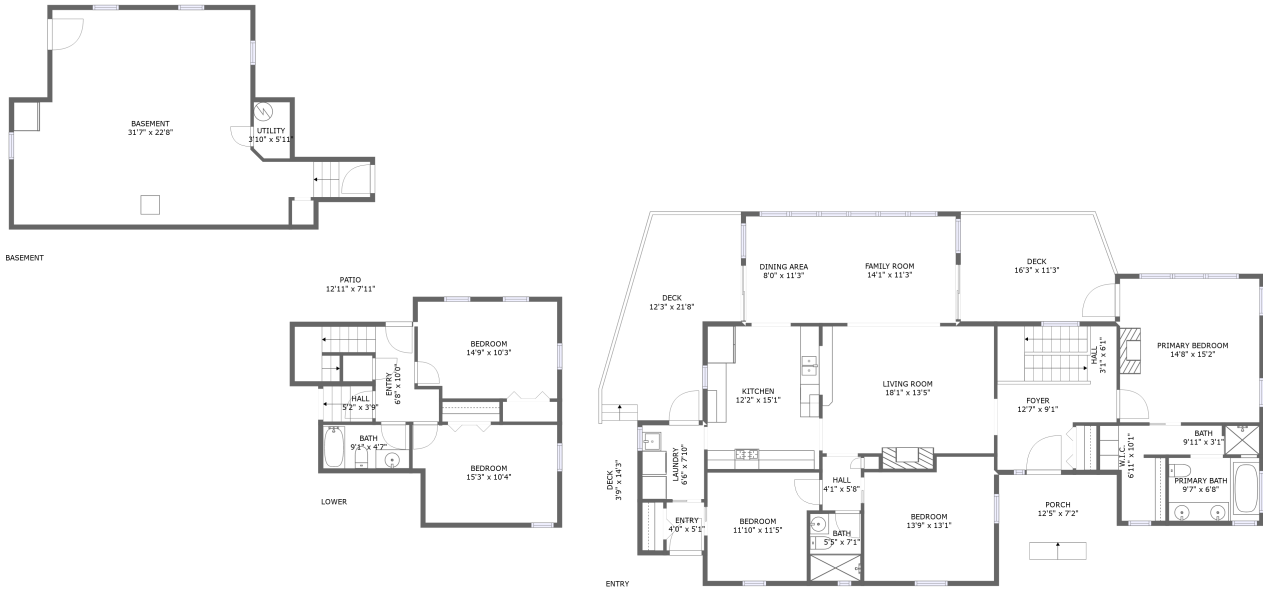


6037 Sunnycrest Road, Bridlewood, Cave Spring, Roanoke, Roanoke County, Virginia, United

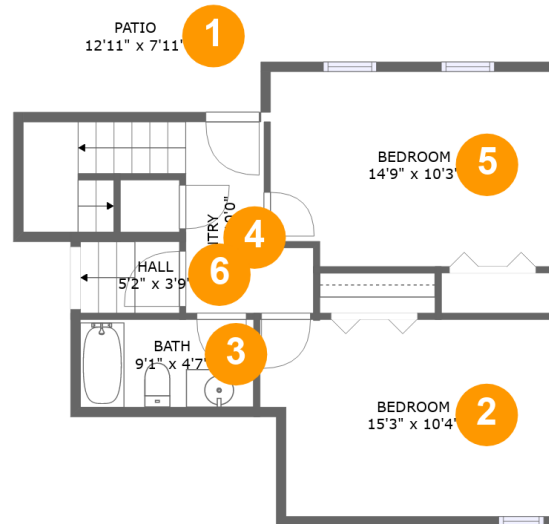


Property Summary

0 garages **5** bedrooms **3** bathrooms **0** half baths

3 floors **2,340** Gross Living Area sqft **3,736** total sqft

6037 Sunnycrest Road, Bridlewood, Cave Spring, Roanoke, Roanoke County, Virginia, United



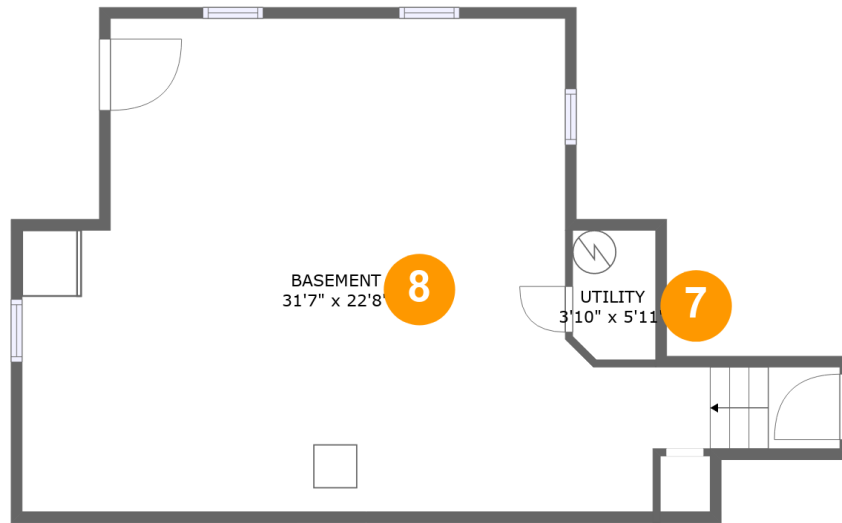
Room Dimensions

Floor 1

Total sqft: 660

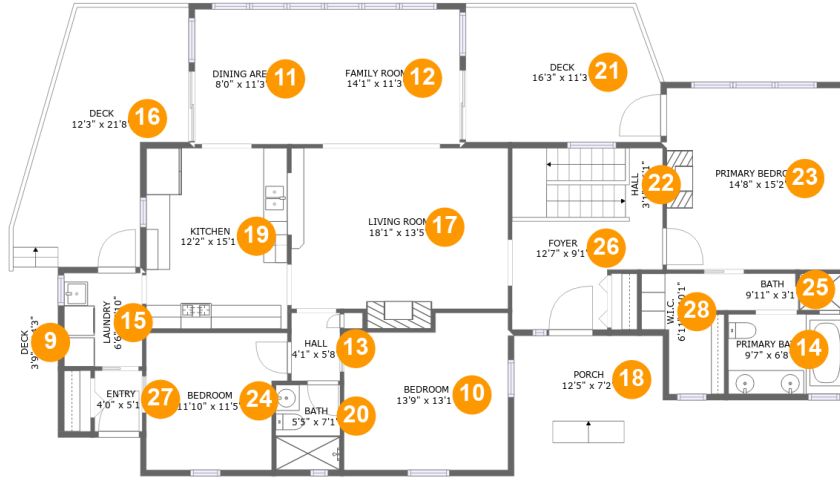
Living area: 459

#	Room name	Dimensions	Area (sqft)	Counted as Living Area
1	Patio	12'11" x 7'11"	102 sq. ft	No
2	Bedroom	15'3" x 10'4"	150 sq. ft	Yes
3	Bath	9'1" x 4'7"	42 sq. ft	Yes
4	Entry	6'8" x 10'0"	87 sq. ft	No
5	Bedroom	14'9" x 10'3"	147 sq. ft	Yes
6	Hall	5'2" x 3'9"	20 sq. ft	Yes

**6037 Sunnycrest Road, Bridlewood, Cave Spring,
Roanoke, Roanoke County, Virginia, United****Room Dimensions****Floor 2****Total sqft: 680****Living area: 30**

#	Room name	Dimensions	Area (sqft)	Counted as Living Area
7	Utility	3'10" x 5'11"	22 sq. ft	Yes
8	Basement	31'7" x 22'8"	586 sq. ft	No

6037 Sunnycrest Road, Bridlewood, Cave Spring, Roanoke, Roanoke County, Virginia, United



Room Dimensions

Floor 3

Total sqft: 2396

Living area: 1851

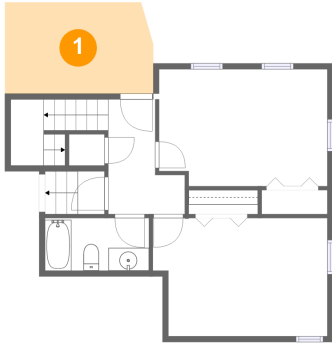
#	Room name	Dimensions	Area (sqft)	Counted as Living Area
9	Deck	3'9" x 14'3"	53 sq. ft	No
10	Bedroom	13'9" x 13'1"	167 sq. ft	Yes
11	Dining Area	8'0" x 11'3"	91 sq. ft	Yes
12	Family Room	14'1" x 11'3"	158 sq. ft	Yes
13	Hall	4'1" x 5'8"	23 sq. ft	Yes
14	Primary Bath	9'7" x 6'8"	64 sq. ft	Yes
15	Laundry	6'6" x 7'10"	51 sq. ft	Yes
16	Deck	12'3" x 21'8"	227 sq. ft	No
17	Living Room	18'1" x 13'5"	252 sq. ft	Yes
18	Porch	12'5" x 7'2"	89 sq. ft	No
19	Kitchen	12'2" x 15'1"	180 sq. ft	Yes

**6037 Sunnycrest Road, Bridlewood, Cave Spring,
Roanoke, Roanoke County, Virginia, United**

#	Room name	Dimensions	Area (sqft)	Counted as Living Area
20	Bath	5'5" x 7'1"	38 sq. ft	Yes
21	Deck	16'3" x 11'3"	176 sq. ft	No
22	Hall	3'1" x 6'1"	77 sq. ft	Yes
23	Primary Bedroom	14'8" x 15'2"	223 sq. ft	Yes
24	Bedroom	11'10" x 11'5"	125 sq. ft	Yes
25	Bath	9'11" x 3'1"	30 sq. ft	Yes
26	Foyer	12'7" x 9'1"	91 sq. ft	Yes
27	Entry	4'0" x 5'1"	20 sq. ft	Yes
28	W.i.c.	6'11" x 10'1"	56 sq. ft	Yes

6037 Sunnycrest Road, Bridlewood, Cave Spring, Roanoke, Roanoke County, Virginia, United

1 Floor 1 - Patio



Dimensions: 12'11" x 7'11"
Area: 102 sq. ft
Counted as Living Area: No

Heated: No
Finished: Yes
Enclosed: No
Contiguous: Yes
Permitted: Yes
Wet Space: No
Addition: No
Conversion: No

2 Floor 1 - Bedroom

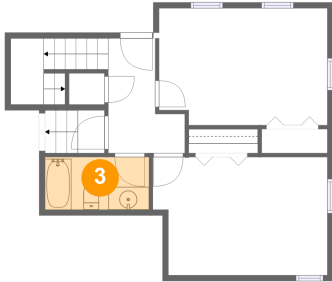


Dimensions: 15'3" x 10'4"
Area: 150 sq. ft
Counted as Living Area:
Yes

Heated: Yes
Finished: Yes
Enclosed: Yes
Contiguous:
Yes
Permitted: Yes
Wet Space: No
Addition: No
Conversion: No

6037 Sunnycrest Road, Bridlewood, Cave Spring, Roanoke, Roanoke County, Virginia, United

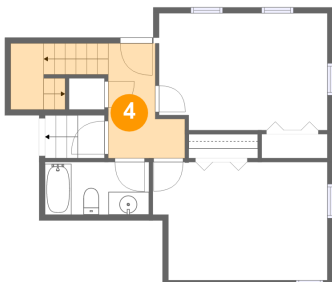
3 Floor 1 - Bath



Dimensions: 9'1" x 4'7"
Area: 42 sq. ft
Counted as Living Area:
Yes

Heated: Yes
Finished: Yes
Enclosed: Yes
Contiguous:
Yes
Permitted: Yes
Wet Space: Yes
Addition: No
Conversion: No

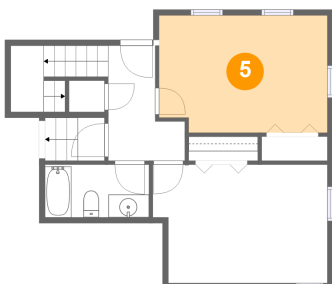
4 Floor 1 - Entry



Dimensions: 6'8" x 10'0"
Area: 87 sq. ft
Counted as Living Area: No

Heated: Yes
Finished: Yes
Enclosed: Yes
Contiguous: Yes
Permitted: Yes
Wet Space: No
Addition: No
Conversion: No

5 Floor 1 - Bedroom

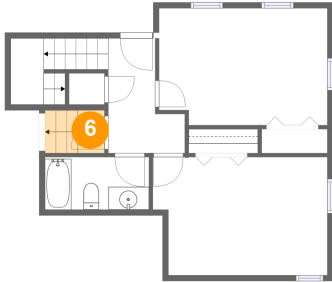


Dimensions: 14'9" x 10'3"
Area: 147 sq. ft
Counted as Living Area:
Yes

Heated: Yes
Finished: Yes
Enclosed: Yes
Contiguous:
Yes
Permitted: Yes
Wet Space: No
Addition: No
Conversion: No

6037 Sunnycrest Road, Bridlewood, Cave Spring, Roanoke, Roanoke County, Virginia, United

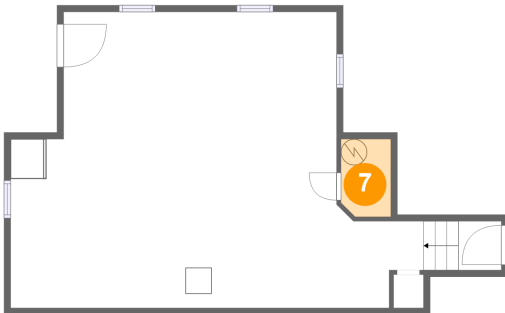
6 Floor 1 - Hall



Dimensions: 5'2" x 3'9"
Area: 20 sq. ft
Counted as Living Area:
Yes

Heated: Yes
Finished: Yes
Enclosed: Yes
Contiguous:
Yes
Permitted: Yes
Wet Space: No
Addition: No
Conversion: No

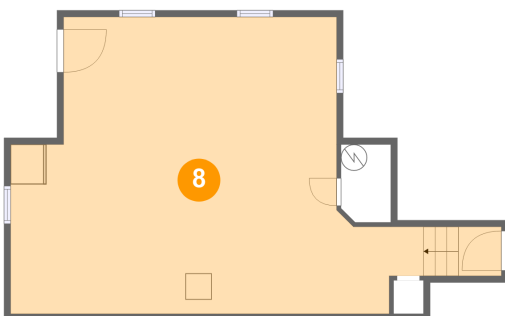
7 Floor 2 - Utility



Dimensions: 3'10" x 5'11"
Area: 22 sq. ft
Counted as Living Area:
Yes

Heated: Yes
Finished: Yes
Enclosed: Yes
Contiguous:
Yes
Permitted: Yes
Wet Space: No
Addition: No
Conversion: No

8 Floor 2 - Basement

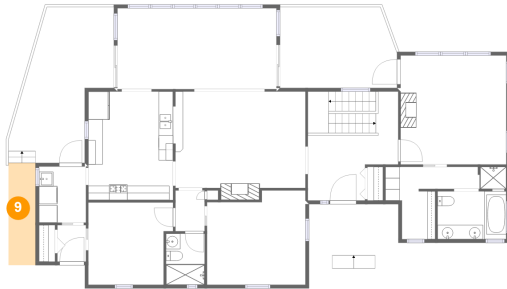


Dimensions: 31'7" x 22'8"
Area: 586 sq. ft
Counted as Living Area: No

Heated: No
Finished: Yes
Enclosed: Yes
Contiguous: Yes
Permitted: Yes
Wet Space: No
Addition: No
Conversion: No

6037 Sunnycrest Road, Bridlewood, Cave Spring, Roanoke, Roanoke County, Virginia, United

9 Floor 3 - Deck



Dimensions: 3'9" x 14'3"
Area: 53 sq. ft
Counted as Living Area: No

Heated: No
Finished: Yes
Enclosed: No
Contiguous: Yes
Permitted: Yes
Wet Space: No
Addition: No
Conversion: No

10 Floor 3 - Bedroom



Dimensions: 13'9" x 13'1"
Area: 167 sq. ft
Counted as Living Area:
Yes

Heated: Yes
Finished: Yes
Enclosed: Yes
Contiguous:
Yes
Permitted: Yes
Wet Space: No
Addition: No
Conversion: No

11 Floor 3 - Dining Area

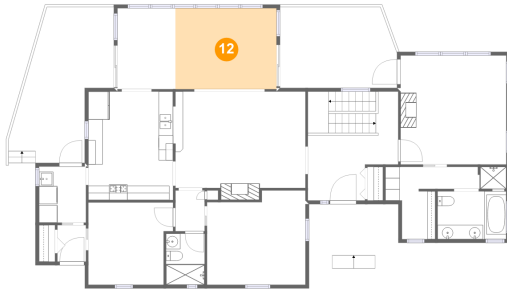


Dimensions: 8'0" x 11'3"
Area: 91 sq. ft
Counted as Living Area:
Yes

Heated: Yes
Finished: Yes
Enclosed: Yes
Contiguous:
Yes
Permitted: Yes
Wet Space: No
Addition: No
Conversion: No

6037 Sunnycrest Road, Bridlewood, Cave Spring, Roanoke, Roanoke County, Virginia, United

12 Floor 3 - Family Room



Dimensions: 14'1" x 11'3"
Area: 158 sq. ft
Counted as Living Area:
Yes

Heated: Yes
Finished: Yes
Enclosed: Yes
Contiguous:
Yes
Permitted: Yes
Wet Space: No
Addition: No
Conversion: No

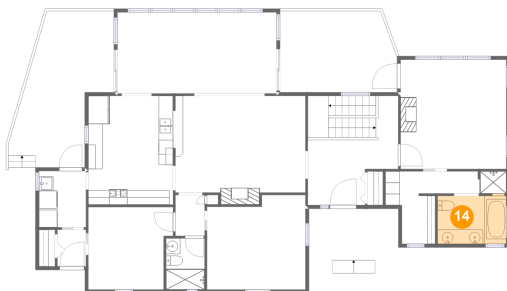
13 Floor 3 - Hall



Dimensions: 4'1" x 5'8"
Area: 23 sq. ft
Counted as Living Area:
Yes

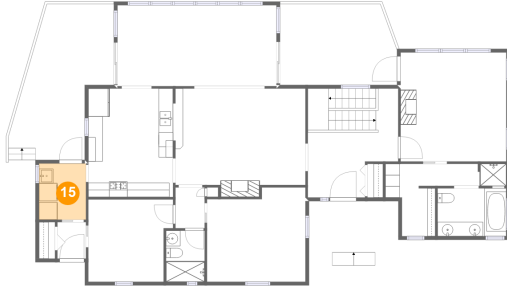
Heated: Yes
Finished: Yes
Enclosed: Yes
Contiguous:
Yes
Permitted: Yes
Wet Space: No
Addition: No
Conversion: No

14 Floor 3 - Primary Bath



Dimensions: 9'7" x 6'8"
Area: 64 sq. ft
Counted as Living Area:
Yes

Heated: Yes
Finished: Yes
Enclosed: Yes
Contiguous:
Yes
Permitted: Yes
Wet Space: Yes
Addition: No
Conversion: No

**6037 Sunnycrest Road, Bridlewood, Cave Spring,
Roanoke, Roanoke County, Virginia, United****15 Floor 3 - Laundry**

Dimensions: 6'6" x 7'10"
Area: 51 sq. ft
Counted as Living Area:
Yes

Heated: Yes
Finished: Yes
Enclosed: Yes
Contiguous:
Yes
Permitted: Yes
Wet Space: No
Addition: No
Conversion: No

16 Floor 3 - Deck

Dimensions: 12'3" x 21'8"
Area: 227 sq. ft
Counted as Living Area: No

Heated: No
Finished: Yes
Enclosed: No
Contiguous: Yes
Permitted: Yes
Wet Space: No
Addition: No
Conversion: No

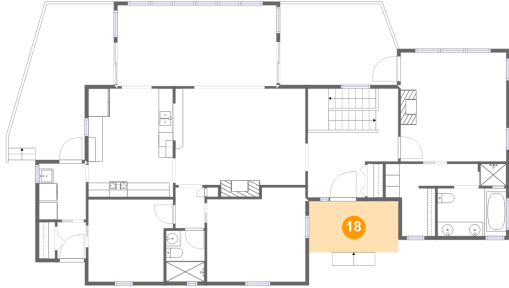
17 Floor 3 - Living Room

Dimensions: 18'1" x 13'5"
Area: 252 sq. ft
Counted as Living Area:
Yes

Heated: Yes
Finished: Yes
Enclosed: Yes
Contiguous:
Yes
Permitted: Yes
Wet Space: No
Addition: No
Conversion: No

6037 Sunnycrest Road, Bridlewood, Cave Spring, Roanoke, Roanoke County, Virginia, United

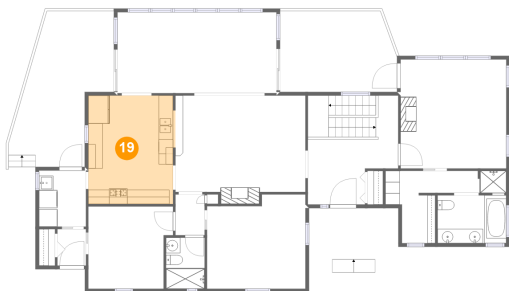
18 Floor 3 - Porch



Dimensions: 12'5" x 7'2"
Area: 89 sq. ft
Counted as Living Area: No

Heated: No
Finished: Yes
Enclosed: No
Contiguous: Yes
Permitted: Yes
Wet Space: No
Addition: No
Conversion: No

19 Floor 3 - Kitchen



Dimensions: 12'2" x 15'1"
Area: 180 sq. ft
Counted as Living Area:
Yes

Heated: Yes
Finished: Yes
Enclosed: Yes
Contiguous:
Yes
Permitted: Yes
Wet Space: No
Addition: No
Conversion: No

20 Floor 3 - Bath

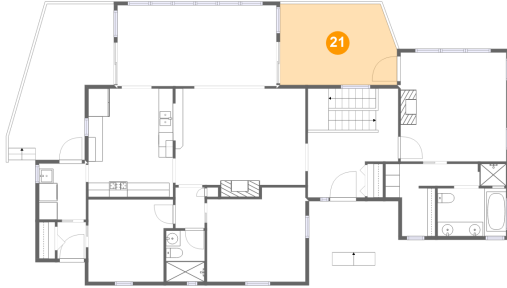


Dimensions: 5'5" x 7'1"
Area: 38 sq. ft
Counted as Living Area:
Yes

Heated: Yes
Finished: Yes
Enclosed: Yes
Contiguous:
Yes
Permitted: Yes
Wet Space: Yes
Addition: No
Conversion: No

6037 Sunnycrest Road, Bridlewood, Cave Spring, Roanoke, Roanoke County, Virginia, United

21 Floor 3 - Deck



Dimensions: 16'3" x 11'3"
Area: 176 sq. ft
Counted as Living Area: No

Heated: No
Finished: Yes
Enclosed: No
Contiguous: No
Permitted: Yes
Wet Space: No
Addition: No
Conversion: No

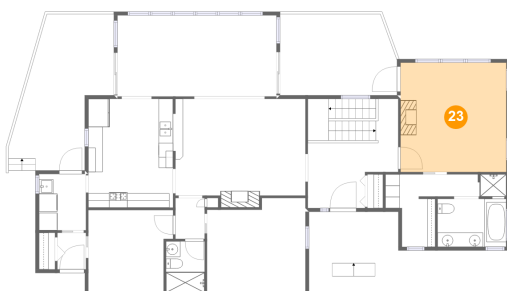
22 Floor 3 - Hall



Dimensions: 3'1" x 6'1"
Area: 77 sq. ft
Counted as Living Area:
Yes

Heated: Yes
Finished: Yes
Enclosed: Yes
Contiguous:
Yes
Permitted: Yes
Wet Space: No
Addition: No
Conversion: No

23 Floor 3 - Primary Bedroom

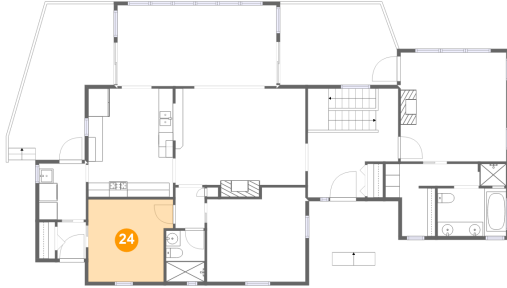


Dimensions: 14'8" x 15'2"
Area: 223 sq. ft
Counted as Living Area:
Yes

Heated: Yes
Finished: Yes
Enclosed: Yes
Contiguous:
Yes
Permitted: Yes
Wet Space: No
Addition: No
Conversion: No

6037 Sunnycrest Road, Bridlewood, Cave Spring, Roanoke, Roanoke County, Virginia, United

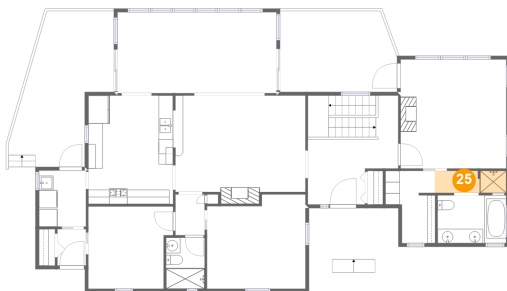
24 Floor 3 - Bedroom



Dimensions: 11'10" x 11'5"
Area: 125 sq. ft
Counted as Living Area:
Yes

Heated: Yes
Finished: Yes
Enclosed: Yes
Contiguous:
Yes
Permitted: Yes
Wet Space: No
Addition: No
Conversion: No

25 Floor 3 - Bath



Dimensions: 9'11" x 3'1"
Area: 30 sq. ft
Counted as Living Area:
Yes

Heated: Yes
Finished: Yes
Enclosed: Yes
Contiguous:
Yes
Permitted: Yes
Wet Space: Yes
Addition: No
Conversion: No

26 Floor 3 - Foyer

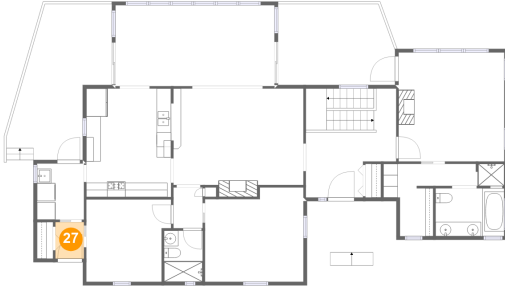


Dimensions: 12'7" x 9'1"
Area: 91 sq. ft
Counted as Living Area:
Yes

Heated: Yes
Finished: Yes
Enclosed: Yes
Contiguous:
Yes
Permitted: Yes
Wet Space: No
Addition: No
Conversion: No

6037 Sunnycrest Road, Bridlewood, Cave Spring, Roanoke, Roanoke County, Virginia, United

27 Floor 3 - Entry



Dimensions: 4'0" x 5'1"
Area: 20 sq. ft
Counted as Living Area:
Yes

Heated: Yes
Finished: Yes
Enclosed: Yes
Contiguous:
Yes
Permitted: Yes
Wet Space: No
Addition: No
Conversion: No

28 Floor 3 - W.i.c.



Dimensions: 6'11" x 10'1"
Area: 56 sq. ft
Counted as Living Area:
Yes

Heated: Yes
Finished: Yes
Enclosed: Yes
Contiguous:
Yes
Permitted: Yes
Wet Space: No
Addition: No
Conversion: No