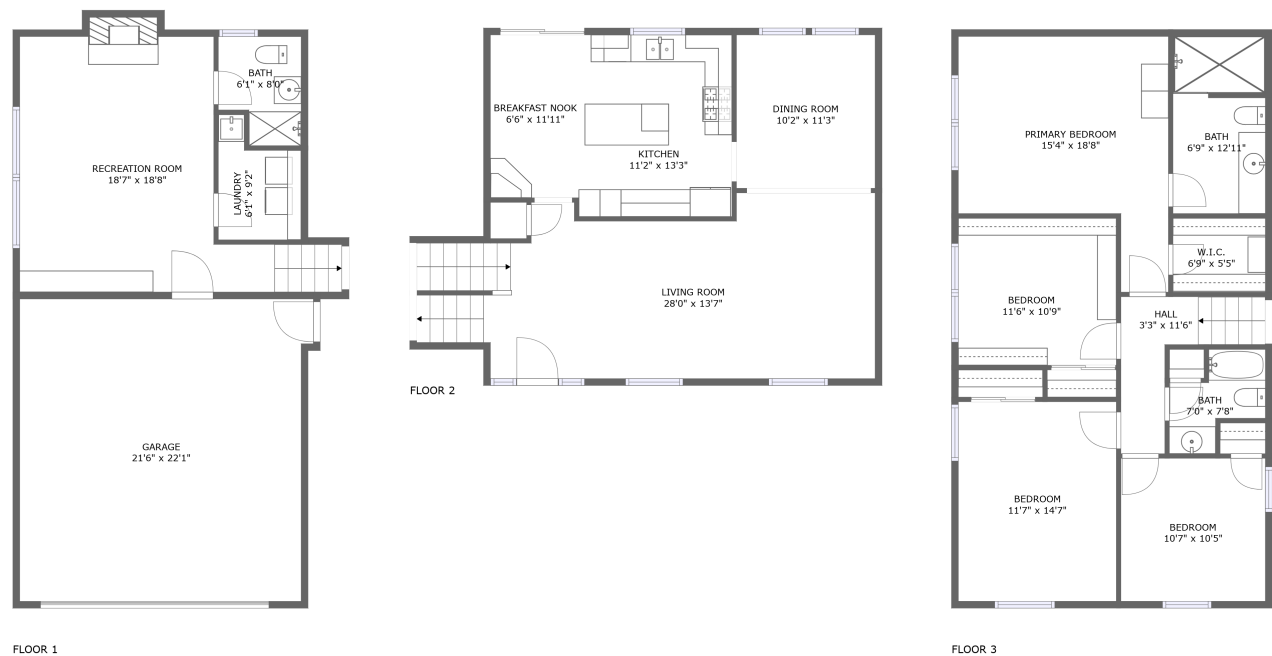




Home report


1128 Elizabeth Avenue, Naperville, DuPage County, Illinois,  
United States, 60540





Property summary


 **1** Garages


 **4** Bedrooms

 **3** Bathrooms

 **0** Half baths

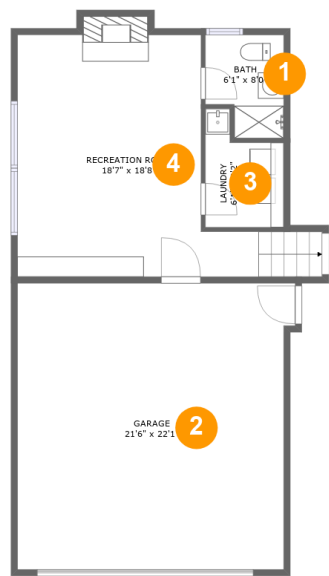
 **3** Floors

 **2,234** Gross living area sqft

 **2,734** Total sqft

Home report

1128 Elizabeth Avenue, Naperville, DuPage County, Illinois,  
United States, 60540



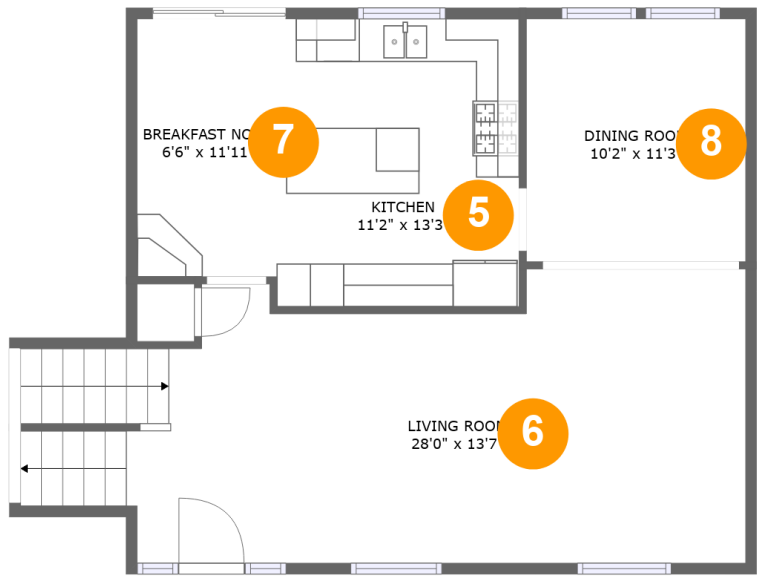
Room dimensions

Floor 1 Total sqft: 938    Living area: 438

#		Dimensions	sqft	Counted as living area
1	Bath	6'1" x 8'0"	43 sq. ft	Yes
2	Garage	21'6" x 22'1"	458 sq. ft	No
3	Laundry	6'1" x 9'2"	45 sq. ft	Yes
4	Recreation Room	18'7" x 18'8"	305 sq. ft	Yes

Home report

1128 Elizabeth Avenue, Naperville, DuPage County, Illinois,  
United States, 60540



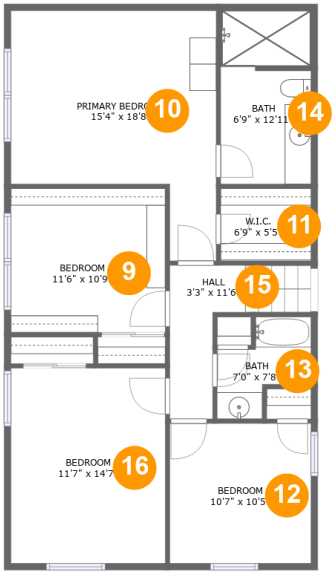
Room dimensions

Floor 2 Total sqft: 805    Living area: 805

#		Dimensions	sqft	Counted as living area
5	Kitchen	11'2" x 13'3"	149 sq. ft	Yes
6	Living Room	28'0" x 13'7"	382 sq. ft	Yes
7	Breakfast Nook	6'6" x 11'11"	77 sq. ft	Yes
8	Dining Room	10'2" x 11'3"	114 sq. ft	Yes

Home report

1128 Elizabeth Avenue, Naperville, DuPage County, Illinois,  
United States, 60540

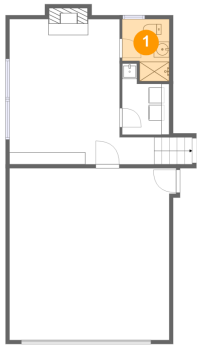


Room dimensions

Floor 3 Total sqft: 991    Living area: 991

#		Dimensions	sqft	Counted as living area
9	Bedroom	11'6" x 10'9"	124 sq. ft	Yes
10	Primary Bedroom	15'4" x 18'8"	219 sq. ft	Yes
11	W.I.C.	6'9" x 5'5"	37 sq. ft	Yes
12	Bedroom	10'7" x 10'5"	110 sq. ft	Yes
13	Bath	7'0" x 7'8"	37 sq. ft	Yes
14	Bath	6'9" x 12'11"	86 sq. ft	Yes
15	Hall	3'3" x 11'6"	63 sq. ft	Yes
16	Bedroom	11'7" x 14'7"	168 sq. ft	Yes

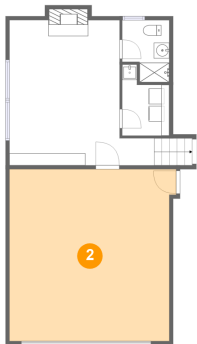
1 Floor 1 - Bath



Dimensions: 6'1" x 8'0"  
Area: 43 sq. ft  
Counted as living area: Yes

Heated: Yes  
Finished: Yes  
Enclosed: Yes  
Contiguous: Yes  
Permitted: Yes  
Wet space: Yes  
Addition: No  
Conversion: No

2 Floor 1 - Garage



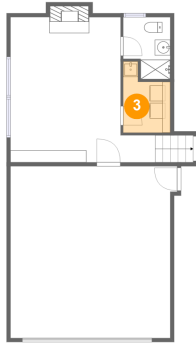
Dimensions: 21'6" x 22'1"  
Area: 458 sq. ft  
Counted as living area: No

Heated: No  
Finished: No  
Enclosed: Yes  
Contiguous: Yes  
Permitted: Yes  
Wet space: No  
Addition: No  
Conversion: No

## Home report

1128 Elizabeth Avenue, Naperville, DuPage County, Illinois,  
United States, 60540

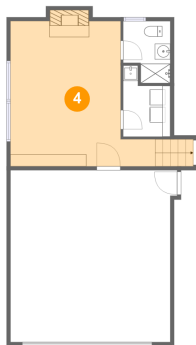
### 3 Floor 1 - Laundry



Dimensions: 6'1" x 9'2"  
Area: 45 sq. ft  
Counted as living area: Yes

Heated: Yes  
Finished: Yes  
Enclosed: Yes  
Contiguous: Yes  
Permitted: Yes  
Wet space: No  
Addition: No  
Conversion: No

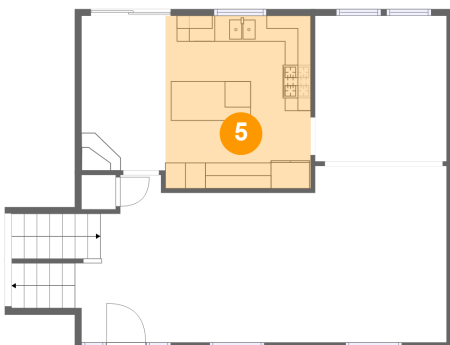
### 4 Floor 1 - Recreation Room



Dimensions: 18'7" x 18'8"  
Area: 305 sq. ft  
Counted as living area: Yes

Heated: Yes  
Finished: Yes  
Enclosed: Yes  
Contiguous: Yes  
Permitted: Yes  
Wet space: No  
Addition: No  
Conversion: No

### 5 Floor 2 - Kitchen



Dimensions: 11'2" x 13'3"  
Area: 149 sq. ft  
Counted as living area: Yes

Heated: Yes  
Finished: Yes  
Enclosed: Yes  
Contiguous: Yes  
Permitted: Yes  
Wet space: No  
Addition: No  
Conversion: No

## Home report

1128 Elizabeth Avenue, Naperville, DuPage County, Illinois,  
United States, 60540

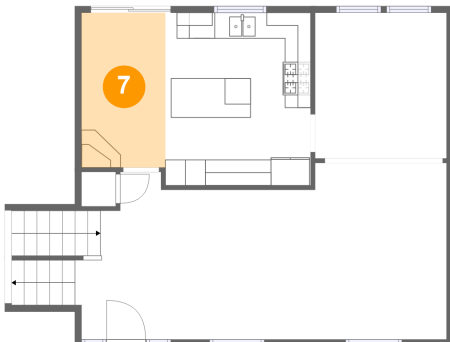
### 6 Floor 2 - Living Room



Dimensions: 28'0" x 13'7"  
Area: 382 sq. ft  
Counted as living area: Yes

Heated: Yes  
Finished: Yes  
Enclosed: Yes  
Contiguous: Yes  
Permitted: Yes  
Wet space: No  
Addition: No  
Conversion: No

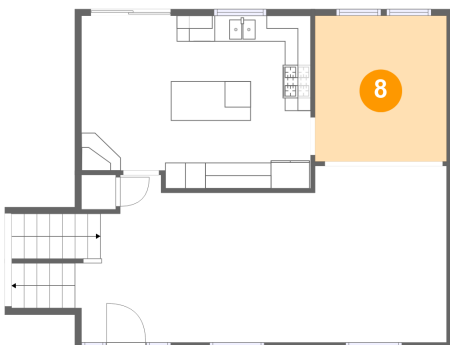
### 7 Floor 2 - Breakfast Nook



Dimensions: 6'6" x 11'11"  
Area: 77 sq. ft  
Counted as living area: Yes

Heated: Yes  
Finished: Yes  
Enclosed: Yes  
Contiguous: Yes  
Permitted: Yes  
Wet space: No  
Addition: No  
Conversion: No

### 8 Floor 2 - Dining Room



Dimensions: 10'2" x 11'3"  
Area: 114 sq. ft  
Counted as living area: Yes

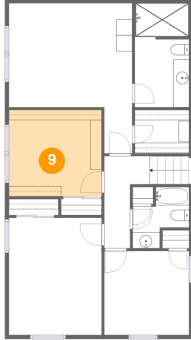
Heated: Yes  
Finished: Yes  
Enclosed: Yes  
Contiguous: Yes  
Permitted: Yes  
Wet space: No  
Addition: No  
Conversion: No

Home report

1128 Elizabeth Avenue, Naperville, DuPage County, Illinois,  
United States, 60540

**9** Floor 3 - Bedroom

---

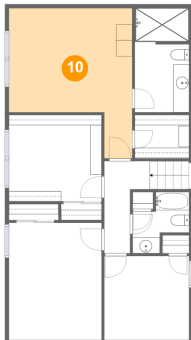


Dimensions: 11'6" x 10'9"  
Area: 124 sq. ft  
Counted as living area: Yes

Heated: Yes  
Finished: Yes  
Enclosed: Yes  
Contiguous: Yes  
Permitted: Yes  
Wet space: No  
Addition: No  
Conversion: No

**10** Floor 3 - Primary Bedroom

---

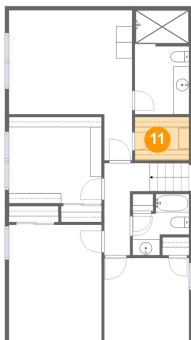


Dimensions: 15'4" x 18'8"  
Area: 219 sq. ft  
Counted as living area: Yes

Heated: Yes  
Finished: Yes  
Enclosed: Yes  
Contiguous: Yes  
Permitted: Yes  
Wet space: No  
Addition: No  
Conversion: No

**11** Floor 3 - W.I.C.

---



Dimensions: 6'9" x 5'5"  
Area: 37 sq. ft  
Counted as living area: Yes

Heated: Yes  
Finished: Yes  
Enclosed: Yes  
Contiguous: Yes  
Permitted: Yes  
Wet space: No  
Addition: No  
Conversion: No

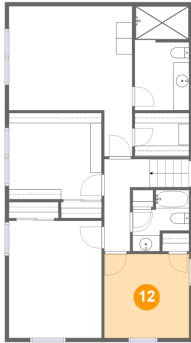


Home report

1128 Elizabeth Avenue, Naperville, DuPage County, Illinois,  
United States, 60540

**12** Floor 3 - Bedroom

---

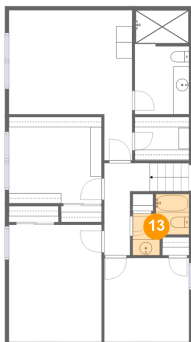


Dimensions: 10'7" x 10'5"  
Area: 110 sq. ft  
Counted as living area: Yes

Heated: Yes  
Finished: Yes  
Enclosed: Yes  
Contiguous: Yes  
Permitted: Yes  
Wet space: No  
Addition: No  
Conversion: No

**13** Floor 3 - Bath

---

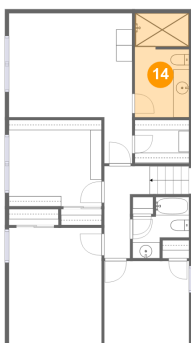


Dimensions: 7'0" x 7'8"  
Area: 37 sq. ft  
Counted as living area: Yes

Heated: Yes  
Finished: Yes  
Enclosed: Yes  
Contiguous: Yes  
Permitted: Yes  
Wet space: Yes  
Addition: No  
Conversion: No

**14** Floor 3 - Bath

---

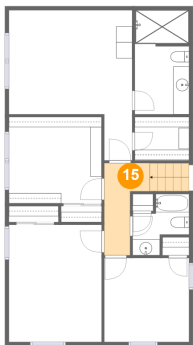


Dimensions: 6'9" x 12'11"  
Area: 86 sq. ft  
Counted as living area: Yes

Heated: Yes  
Finished: Yes  
Enclosed: Yes  
Contiguous: Yes  
Permitted: Yes  
Wet space: Yes  
Addition: No  
Conversion: No

1128 Elizabeth Avenue, Naperville, DuPage County, Illinois,  
United States, 60540

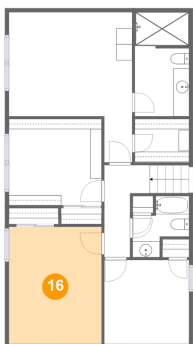
15 Floor 3 - Hall



Dimensions: 3'3" x 11'6"  
Area: 63 sq. ft  
Counted as living area: Yes

Heated: Yes  
Finished: Yes  
Enclosed: Yes  
Contiguous: Yes  
Permitted: Yes  
Wet space: No  
Addition: No  
Conversion: No

16 Floor 3 - Bedroom



Dimensions: 11'7" x 14'7"  
Area: 168 sq. ft  
Counted as living area: Yes

Heated: Yes  
Finished: Yes  
Enclosed: Yes  
Contiguous: Yes  
Permitted: Yes  
Wet space: No  
Addition: No  
Conversion: No