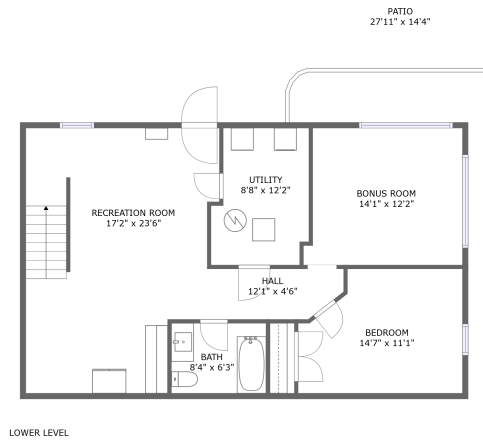
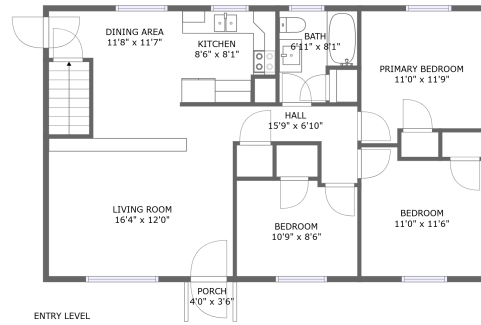



3922 Lilac Avenue Northwest, Cherry Hill, Roanoke, Roanoke city, Virginia, United States, 24017



Property summary

 **0** Garages

 **4** Bedrooms

 **2** Bathrooms

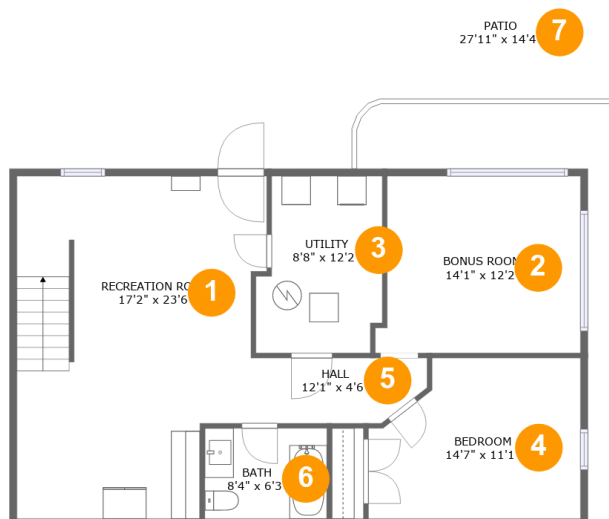
 **0** Half baths

 **2** Floors

 **1,850** Gross living area sqft

 **2,279** Total sqft

3922 Lilac Avenue Northwest, Cherry Hill, Roanoke, Roanoke city, Virginia, United States, 24017



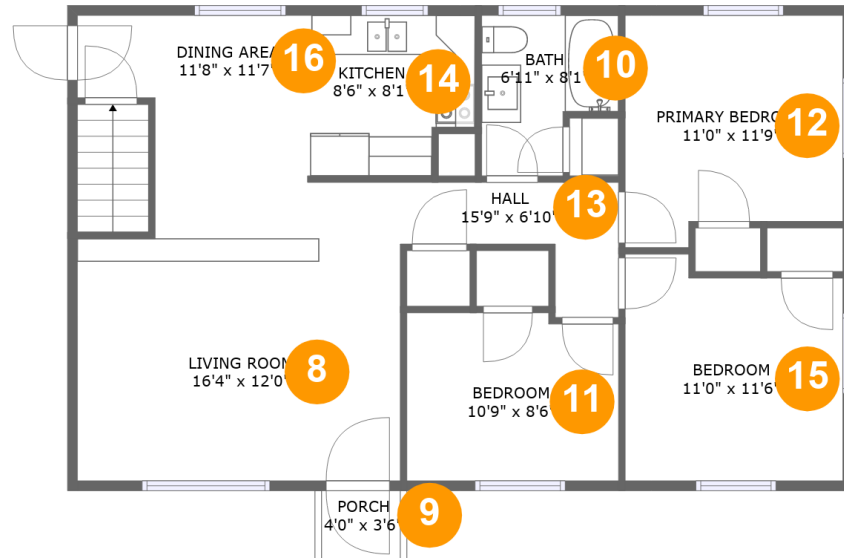
Room dimensions

Floor 1

Total sqft: 1290 Living area: 875

#		Dimensions	sqft	Counted as living area
1	Recreation Room	17'2" x 23'6"	363 sq. ft	Yes
2	Bonus Room	14'1" x 12'2"	163 sq. ft	Yes
3	Utility	8'8" x 12'2"	96 sq. ft	No
4	Bedroom	14'7" x 11'1"	144 sq. ft	Yes
5	Hall	12'1" x 4'6"	51 sq. ft	Yes
6	Bath	8'4" x 6'3"	52 sq. ft	Yes
7	Patio	27'11" x 14'4"	315 sq. ft	No

3922 Lilac Avenue Northwest, Cherry Hill, Roanoke, Roanoke city, Virginia, United States, 24017



Room dimensions

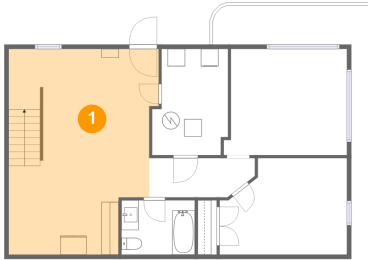
Floor 2

Total sqft: 989 Living area: 975

#		Dimensions	sqft	Counted as living area
8	Living Room	16'4" x 12'0"	196 sq. ft	Yes
9	Porch	4'0" x 3'6"	14 sq. ft	No
10	Bath	6'11" x 8'1"	47 sq. ft	Yes
11	Bedroom	10'9" x 8'6"	89 sq. ft	Yes
12	Primary Bedroom	11'0" x 11'9"	119 sq. ft	Yes
13	Hall	15'9" x 6'10"	61 sq. ft	Yes
14	Kitchen	8'6" x 8'1"	63 sq. ft	Yes
15	Bedroom	11'0" x 11'6"	117 sq. ft	Yes
16	Dining Area	11'8" x 11'7"	107 sq. ft	Yes

**3922 Lilac Avenue Northwest, Cherry Hill, Roanoke,
Roanoke city, Virginia, United States, 24017**

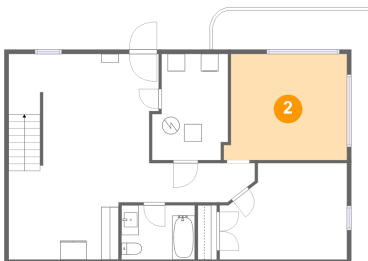
1 Floor 1 - Recreation Room



Dimensions: 17'2" x 23'6"
Area: 363 sq. ft
Counted as living area: Yes

Heated: Yes
Finished: Yes
Enclosed: Yes
Contiguous: Yes
Permitted: Yes
Wet space: No
Addition: No
Conversion: No

2 Floor 1 - Bonus Room

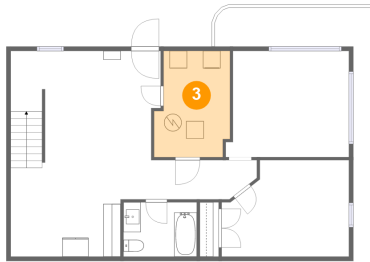


Dimensions: 14'1" x 12'2"
Area: 163 sq. ft
Counted as living area: Yes

Heated: Yes
Finished: Yes
Enclosed: Yes
Contiguous: Yes
Permitted: Yes
Wet space: No
Addition: No
Conversion: No

**3922 Lilac Avenue Northwest, Cherry Hill, Roanoke,
Roanoke city, Virginia, United States, 24017**

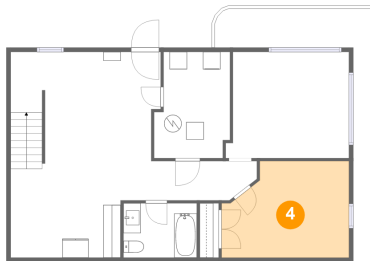
3 Floor 1 - Utility



Dimensions: 8'8" x 12'2"
Area: 96 sq. ft
Counted as living area: No

Heated: Yes
Finished: No
Enclosed: Yes
Contiguous: Yes
Permitted: Yes
Wet space: No
Addition: No
Conversion: No

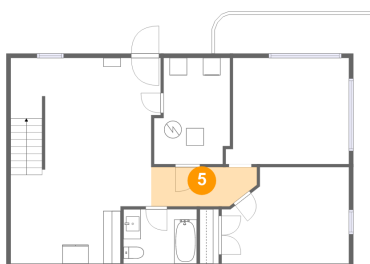
4 Floor 1 - Bedroom



Dimensions: 14'7" x 11'1"
Area: 144 sq. ft
Counted as living area: Yes

Heated: Yes
Finished: Yes
Enclosed: Yes
Contiguous: Yes
Permitted: Yes
Wet space: No
Addition: No
Conversion: No

5 Floor 1 - Hall

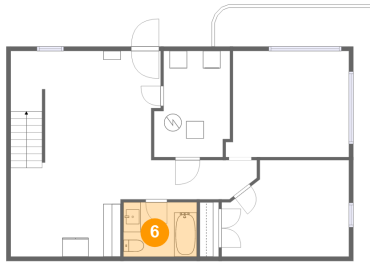


Dimensions: 12'1" x 4'6"
Area: 51 sq. ft
Counted as living area: Yes

Heated: Yes
Finished: Yes
Enclosed: Yes
Contiguous: Yes
Permitted: Yes
Wet space: No
Addition: No
Conversion: No

**3922 Lilac Avenue Northwest, Cherry Hill, Roanoke,
Roanoke city, Virginia, United States, 24017**

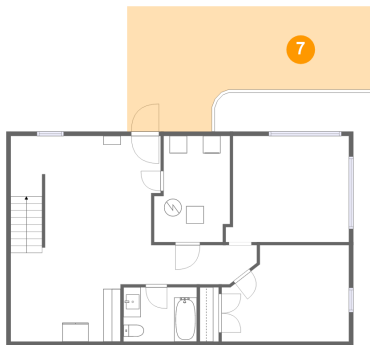
6 Floor 1 - Bath



Dimensions: 8'4" x 6'3"
Area: 52 sq. ft
Counted as living area: Yes

Heated: Yes
Finished: Yes
Enclosed: Yes
Contiguous: Yes
Permitted: Yes
Wet space: Yes
Addition: No
Conversion: No

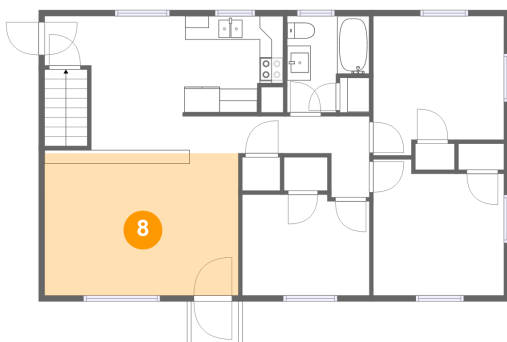
7 Floor 1 - Patio



Dimensions: 27'11" x 14'4"
Area: 315 sq. ft
Counted as living area: No

Heated: No
Finished: Yes
Enclosed: No
Contiguous: Yes
Permitted: Yes
Wet space: No
Addition: No
Conversion: No

8 Floor 2 - Living Room

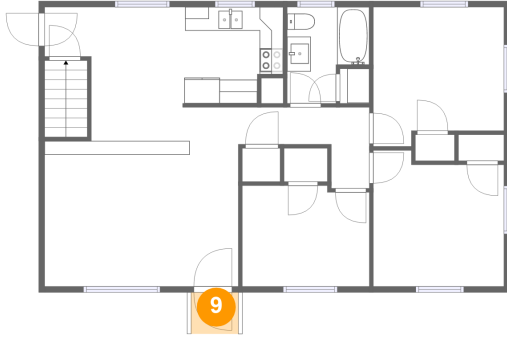


Dimensions: 16'4" x 12'0"
Area: 196 sq. ft
Counted as living area: Yes

Heated: Yes
Finished: Yes
Enclosed: Yes
Contiguous: Yes
Permitted: Yes
Wet space: No
Addition: No
Conversion: No

3922 Lilac Avenue Northwest, Cherry Hill, Roanoke, Roanoke city, Virginia, United States, 24017

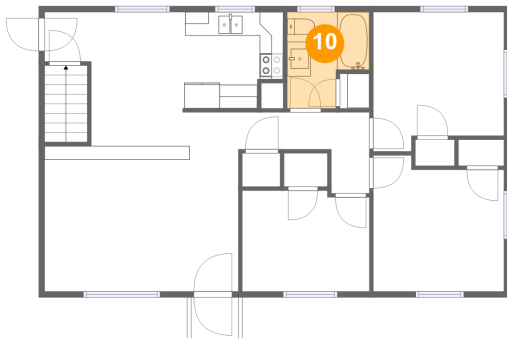
9 Floor 2 - Porch



Dimensions: 4'0" x 3'6"
Area: 14 sq. ft
Counted as living area: No

Heated: No
Finished: Yes
Enclosed: No
Contiguous: Yes
Permitted: Yes
Wet space: No
Addition: No
Conversion: No

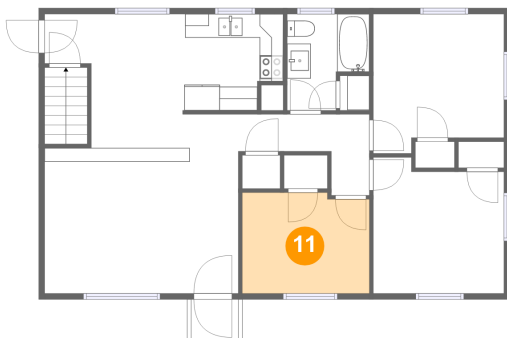
10 Floor 2 - Bath



Dimensions: 6'11" x 8'1"
Area: 47 sq. ft
Counted as living area: Yes

Heated: Yes
Finished: Yes
Enclosed: Yes
Contiguous: Yes
Permitted: Yes
Wet space: Yes
Addition: No
Conversion: No

11 Floor 2 - Bedroom

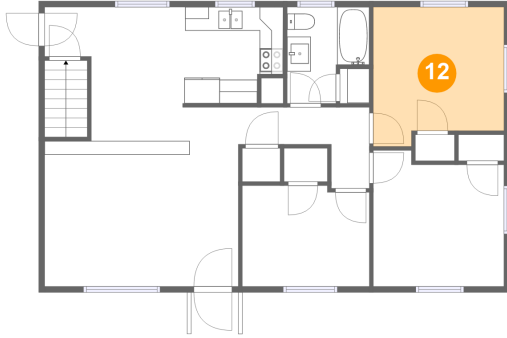


Dimensions: 10'9" x 8'6"
Area: 89 sq. ft
Counted as living area: Yes

Heated: Yes
Finished: Yes
Enclosed: Yes
Contiguous: Yes
Permitted: Yes
Wet space: No
Addition: No
Conversion: No

3922 Lilac Avenue Northwest, Cherry Hill, Roanoke, Roanoke city, Virginia, United States, 24017

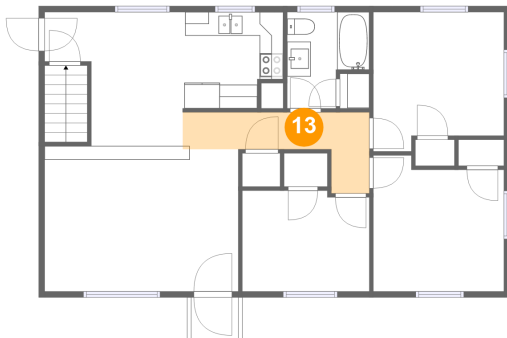
12 Floor 2 - Primary Bedroom



Dimensions: 11'0" x 11'9"
Area: 119 sq. ft
Counted as living area: Yes

Heated: Yes
Finished: Yes
Enclosed: Yes
Contiguous: Yes
Permitted: Yes
Wet space: No
Addition: No
Conversion: No

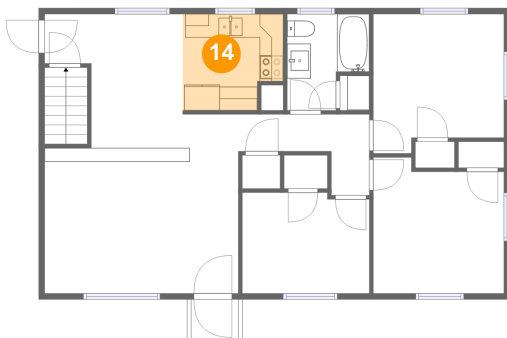
13 Floor 2 - Hall



Dimensions: 15'9" x 6'10"
Area: 61 sq. ft
Counted as living area: Yes

Heated: Yes
Finished: Yes
Enclosed: Yes
Contiguous: Yes
Permitted: Yes
Wet space: No
Addition: No
Conversion: No

14 Floor 2 - Kitchen

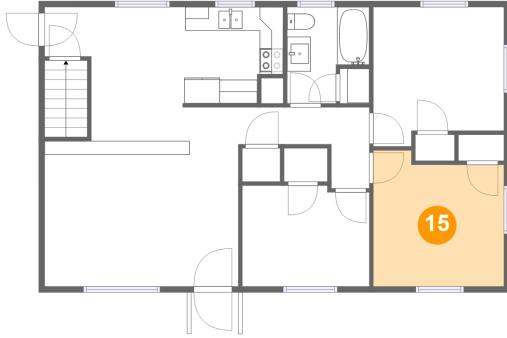


Dimensions: 8'6" x 8'1"
Area: 63 sq. ft
Counted as living area: Yes

Heated: Yes
Finished: Yes
Enclosed: Yes
Contiguous: Yes
Permitted: Yes
Wet space: No
Addition: No
Conversion: No

**3922 Lilac Avenue Northwest, Cherry Hill, Roanoke,
Roanoke city, Virginia, United States, 24017**

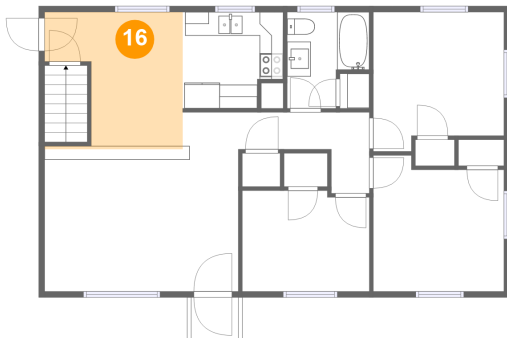
15 Floor 2 - Bedroom



Dimensions: 11'0" x 11'6"
Area: 117 sq. ft
Counted as living area: Yes

Heated: Yes
Finished: Yes
Enclosed: Yes
Contiguous: Yes
Permitted: Yes
Wet space: No
Addition: No
Conversion: No

16 Floor 2 - Dining Area



Dimensions: 11'8" x 11'7"
Area: 107 sq. ft
Counted as living area: Yes

Heated: Yes
Finished: Yes
Enclosed: Yes
Contiguous: Yes
Permitted: Yes
Wet space: No
Addition: No
Conversion: No