

4485-4487 2nd Street, Washington Junction, Bethel Park, Allegheny County, Pennsylvania, United States,



Property summary

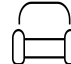
 **0** Garages

 **6** Bedrooms

 **2** Bathrooms

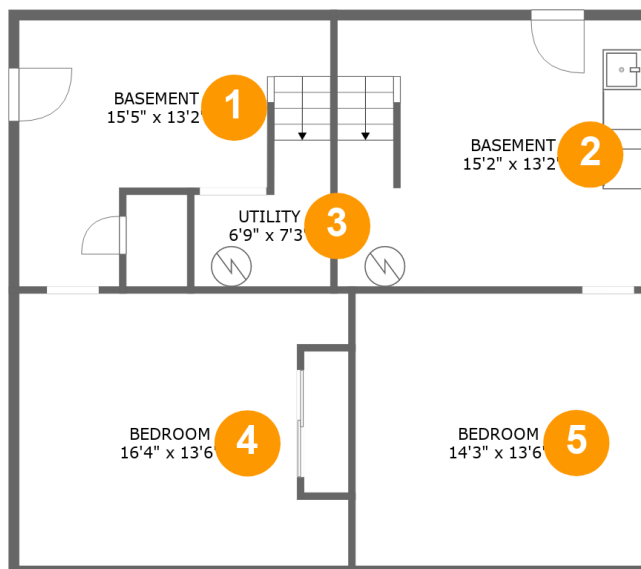
 **0** Half baths

 **3** Floors

 **2,787** Gross living area sqft

 **3,586** Total sqft

4485-4487 2nd Street, Washington Junction, Bethel Park, Allegheny County, Pennsylvania, United States,



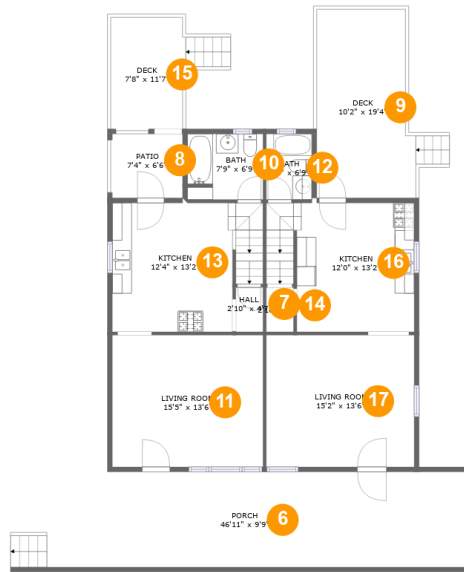
Room dimensions

Floor 1

Total sqft: 895 Living area: 895

#		Dimensions	sqft	Counted as living area
1	Basement	15'5" x 13'2"	136 sq. ft	Yes
2	Basement	15'2" x 13'2"	200 sq. ft	Yes
3	Utility	6'9" x 7'3"	47 sq. ft	Yes
4	Bedroom	16'4" x 13'6"	201 sq. ft	Yes
5	Bedroom	14'3" x 13'6"	193 sq. ft	Yes

4485-4487 2nd Street, Washington Junction, Bethel Park, Allegheny County, Pennsylvania, United States,



Room dimensions

Floor 2

Total sqft: 1796

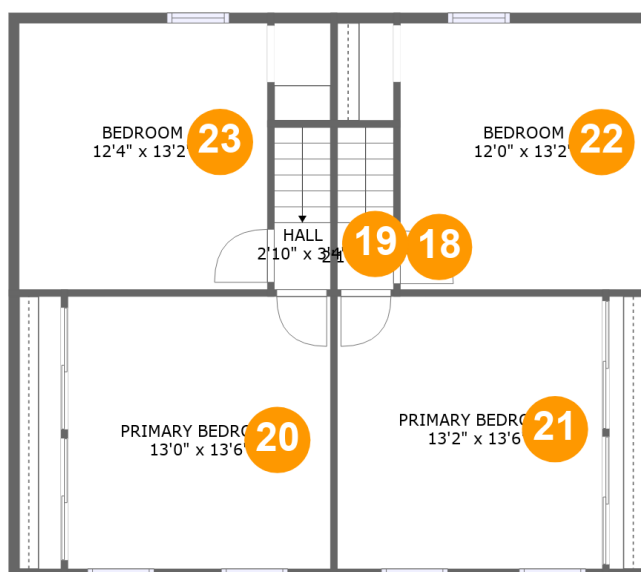
Living area: 997

#		Dimensions	sqft	Counted as living area
6	Outdoor	46'11" x 9'9"	458 sq. ft	No
7	Hall	2'10" x 4'7"	13 sq. ft	Yes
8	Outdoor	7'4" x 6'6"	48 sq. ft	No
9	Outdoor	10'2" x 19'4"	192 sq. ft	No
10	Bath	7'9" x 6'9"	51 sq. ft	Yes
11	Living Room	15'5" x 13'6"	209 sq. ft	Yes
12	Bath	4'8" x 6'9"	31 sq. ft	Yes
13	Kitchen	12'4" x 13'2"	187 sq. ft	Yes
14	Hall	2'10" x 4'7"	13 sq. ft	Yes
15	Outdoor	7'8" x 11'7"	100 sq. ft	No
16	Kitchen	12'0" x 13'2"	183 sq. ft	Yes

4485-4487 2nd Street, Washington Junction, Bethel Park, Allegheny County, Pennsylvania, United States,

#		Dimensions	sqft	Counted as living area
17	Living Room	15'2" x 13'6"	205 sq. ft	Yes

4485-4487 2nd Street, Washington Junction, Bethel Park, Allegheny County, Pennsylvania, United States,



Room dimensions

Floor 3

Total sqft: 895 Living area: 895

#		Dimensions	sqft	Counted as living area
18	Hall	2'10" x 3'3"	22 sq. ft	Yes
19	Hall	2'10" x 3'4"	22 sq. ft	Yes
20	Bedroom	13'0" x 13'6"	176 sq. ft	Yes
21	Bedroom	13'2" x 13'6"	177 sq. ft	Yes
22	Bedroom	12'0" x 13'2"	159 sq. ft	Yes
23	Bedroom	12'4" x 13'2"	163 sq. ft	Yes

4485-4487 2nd Street, Washington Junction, Bethel Park, Allegheny County, Pennsylvania, United States,

1 Floor 1 - Basement



Dimensions: 15'5" x 13'2"
Area: 136 sq. ft
Counted as living area: Yes

Heated: Yes
Finished: Yes
Enclosed: Yes
Contiguous: Yes
Permitted: Yes
Wet space: No
Addition: No
Conversion: No

2 Floor 1 - Basement

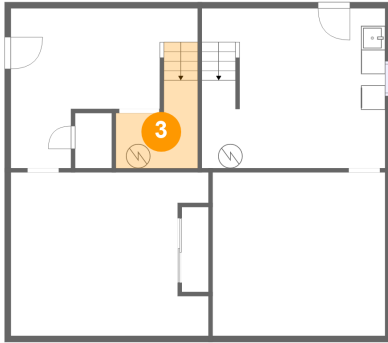


Dimensions: 15'2" x 13'2"
Area: 200 sq. ft
Counted as living area: Yes

Heated: Yes
Finished: Yes
Enclosed: Yes
Contiguous: Yes
Permitted: Yes
Wet space: No
Addition: No
Conversion: No

4485-4487 2nd Street, Washington Junction, Bethel Park, Allegheny County, Pennsylvania, United States,

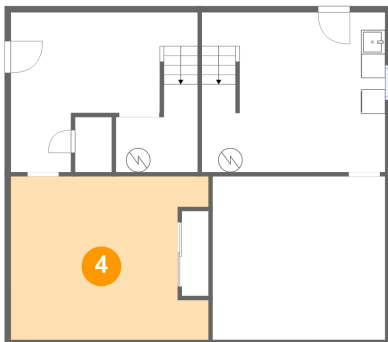
3 Floor 1 - Utility



Dimensions: 6'9" x 7'3"
Area: 47 sq. ft
Counted as living area: Yes

Heated: Yes
Finished: Yes
Enclosed: Yes
Contiguous: Yes
Permitted: Yes
Wet space: No
Addition: No
Conversion: No

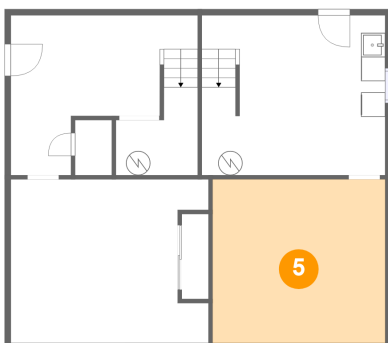
4 Floor 1 - Bedroom



Dimensions: 16'4" x 13'6"
Area: 201 sq. ft
Counted as living area: Yes

Heated: Yes
Finished: Yes
Enclosed: Yes
Contiguous: Yes
Permitted: Yes
Wet space: No
Addition: No
Conversion: No

5 Floor 1 - Bedroom

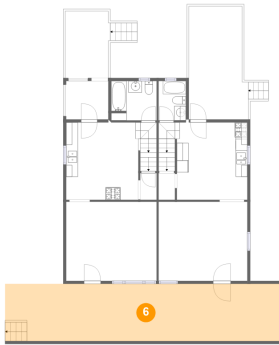


Dimensions: 14'3" x 13'6"
Area: 193 sq. ft
Counted as living area: Yes

Heated: Yes
Finished: Yes
Enclosed: Yes
Contiguous: Yes
Permitted: Yes
Wet space: No
Addition: No
Conversion: No

4485-4487 2nd Street, Washington Junction, Bethel Park, Allegheny County, Pennsylvania, United States,

6 Floor 2 - Outdoor



Dimensions: 46'11" x 9'9"
Area: 458 sq. ft
Counted as living area: No

Heated: No
Finished: Yes
Enclosed: No
Contiguous: Yes
Permitted: Yes
Wet space: No
Addition: No
Conversion: No

7 Floor 2 - Hall



Dimensions: 2'10" x 4'7"
Area: 13 sq. ft
Counted as living area: Yes

Heated: Yes
Finished: Yes
Enclosed: Yes
Contiguous: Yes
Permitted: Yes
Wet space: No
Addition: No
Conversion: No

8 Floor 2 - Outdoor

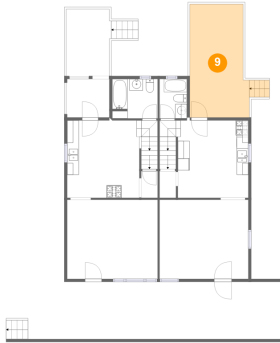


Dimensions: 7'4" x 6'6"
Area: 48 sq. ft
Counted as living area: No

Heated: No
Finished: Yes
Enclosed: No
Contiguous: Yes
Permitted: Yes
Wet space: No
Addition: No
Conversion: No

4485-4487 2nd Street, Washington Junction, Bethel Park, Allegheny County, Pennsylvania, United States,

9 Floor 2 - Outdoor



Dimensions: 10'2" x 19'4"
Area: 192 sq. ft
Counted as living area: No

Heated: No
Finished: Yes
Enclosed: No
Contiguous: Yes
Permitted: Yes
Wet space: No
Addition: No
Conversion: No

10 Floor 2 - Bath



Dimensions: 7'9" x 6'9"
Area: 51 sq. ft
Counted as living area: Yes

Heated: Yes
Finished: Yes
Enclosed: Yes
Contiguous: Yes
Permitted: Yes
Wet space: Yes
Addition: No
Conversion: No

11 Floor 2 - Living Room

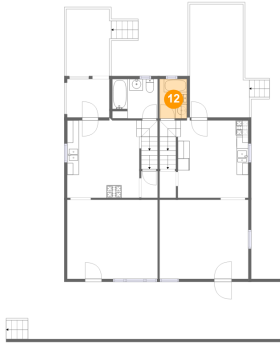


Dimensions: 15'5" x 13'6"
Area: 209 sq. ft
Counted as living area: Yes

Heated: Yes
Finished: Yes
Enclosed: Yes
Contiguous: Yes
Permitted: Yes
Wet space: No
Addition: No
Conversion: No

4485-4487 2nd Street, Washington Junction, Bethel Park, Allegheny County, Pennsylvania, United States,

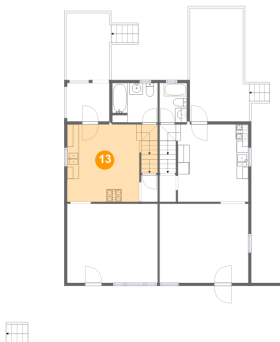
12 Floor 2 - Bath



Dimensions: 4'8" x 6'9"
Area: 31 sq. ft
Counted as living area: Yes

Heated: Yes
Finished: Yes
Enclosed: Yes
Contiguous: Yes
Permitted: Yes
Wet space: Yes
Addition: No
Conversion: No

13 Floor 2 - Kitchen



Dimensions: 12'4" x 13'2"
Area: 187 sq. ft
Counted as living area: Yes

Heated: Yes
Finished: Yes
Enclosed: Yes
Contiguous: Yes
Permitted: Yes
Wet space: No
Addition: No
Conversion: No

14 Floor 2 - Hall



Dimensions: 2'10" x 4'7"
Area: 13 sq. ft
Counted as living area: Yes

Heated: Yes
Finished: Yes
Enclosed: Yes
Contiguous: Yes
Permitted: Yes
Wet space: No
Addition: No
Conversion: No

4485-4487 2nd Street, Washington Junction, Bethel Park, Allegheny County, Pennsylvania, United States,

15 Floor 2 - Outdoor



Dimensions: 7'8" x 11'7"
Area: 100 sq. ft
Counted as living area: No

Heated: No
Finished: Yes
Enclosed: No
Contiguous: Yes
Permitted: Yes
Wet space: No
Addition: No
Conversion: No

16 Floor 2 - Kitchen



Dimensions: 12'0" x 13'2"
Area: 183 sq. ft
Counted as living area: Yes

Heated: Yes
Finished: Yes
Enclosed: Yes
Contiguous: Yes
Permitted: Yes
Wet space: No
Addition: No
Conversion: No

17 Floor 2 - Living Room

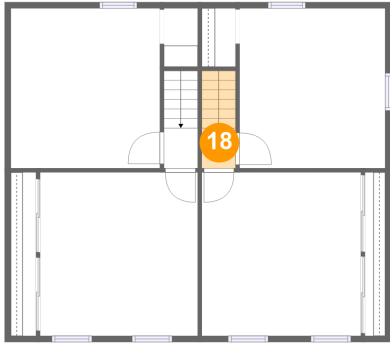


Dimensions: 15'2" x 13'6"
Area: 205 sq. ft
Counted as living area: Yes

Heated: Yes
Finished: Yes
Enclosed: Yes
Contiguous: Yes
Permitted: Yes
Wet space: No
Addition: No
Conversion: No

4485-4487 2nd Street, Washington Junction, Bethel Park, Allegheny County, Pennsylvania, United States,

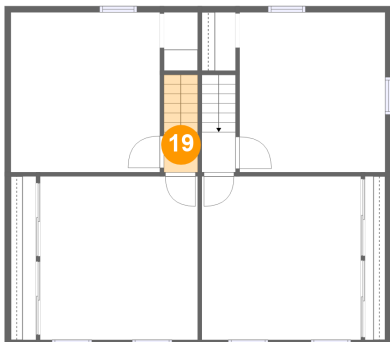
18 Floor 3 - Hall



Dimensions: 2'10" x 3'3"
Area: 22 sq. ft
Counted as living area: Yes

Heated: Yes
Finished: Yes
Enclosed: Yes
Contiguous: Yes
Permitted: Yes
Wet space: No
Addition: No
Conversion: No

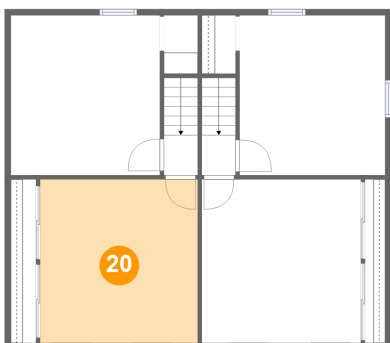
19 Floor 3 - Hall



Dimensions: 2'10" x 3'4"
Area: 22 sq. ft
Counted as living area: Yes

Heated: Yes
Finished: Yes
Enclosed: Yes
Contiguous: Yes
Permitted: Yes
Wet space: No
Addition: No
Conversion: No

20 Floor 3 - Bedroom

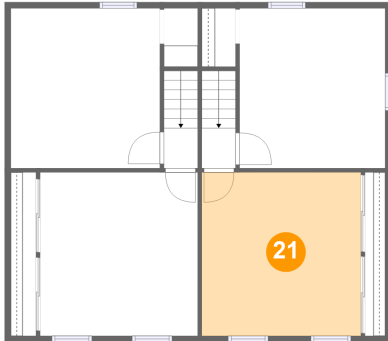


Dimensions: 13'0" x 13'6"
Area: 176 sq. ft
Counted as living area: Yes

Heated: Yes
Finished: Yes
Enclosed: Yes
Contiguous: Yes
Permitted: Yes
Wet space: No
Addition: No
Conversion: No

4485-4487 2nd Street, Washington Junction, Bethel Park, Allegheny County, Pennsylvania, United States,

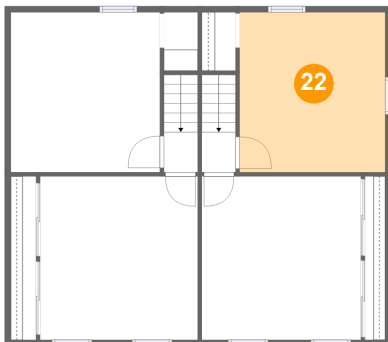
21 Floor 3 - Bedroom



Dimensions: 13'2" x 13'6"
Area: 177 sq. ft
Counted as living area: Yes

Heated: Yes
Finished: Yes
Enclosed: Yes
Contiguous: Yes
Permitted: Yes
Wet space: No
Addition: No
Conversion: No

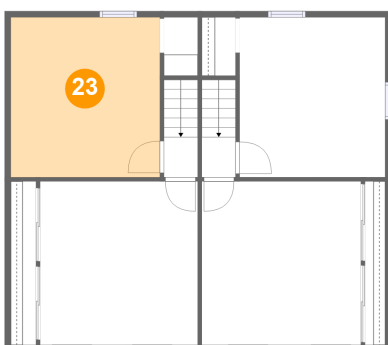
22 Floor 3 - Bedroom



Dimensions: 12'0" x 13'2"
Area: 159 sq. ft
Counted as living area: Yes

Heated: Yes
Finished: Yes
Enclosed: Yes
Contiguous: Yes
Permitted: Yes
Wet space: No
Addition: No
Conversion: No

23 Floor 3 - Bedroom



Dimensions: 12'4" x 13'2"
Area: 163 sq. ft
Counted as living area: Yes

Heated: Yes
Finished: Yes
Enclosed: Yes
Contiguous: Yes
Permitted: Yes
Wet space: No
Addition: No
Conversion: No