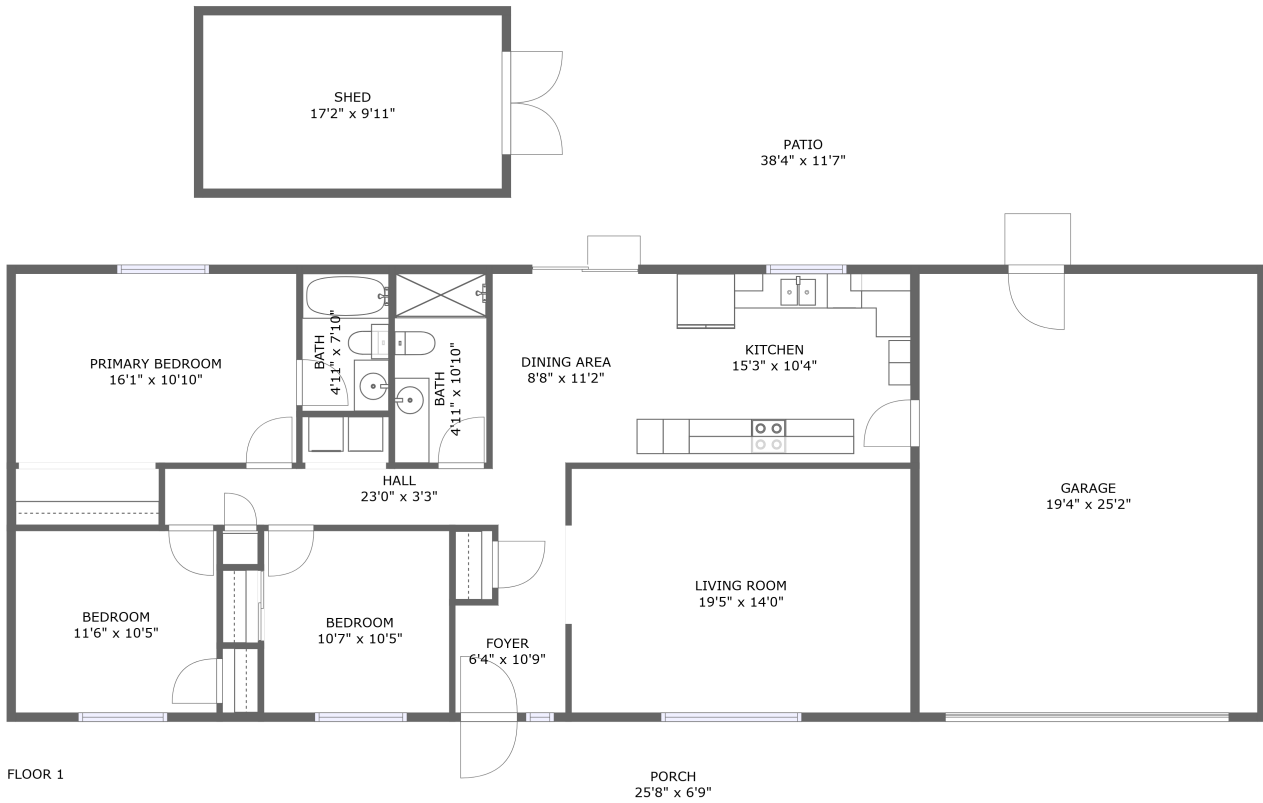


3036 Barnes Way, Iona, Bonneville County, Idaho, United States, 83427

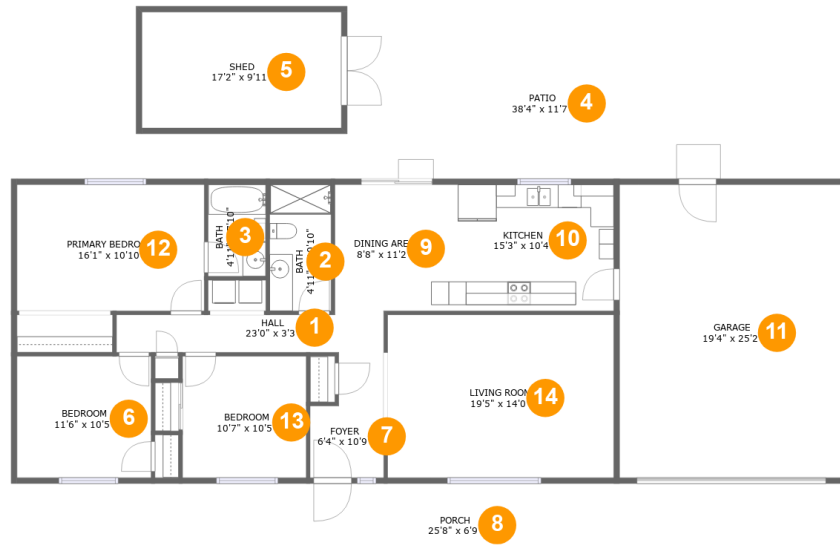


Property Summary

1 garages **3** bedrooms **2** bathrooms **0** half baths

1 floors **1,367** Gross Living Area sqft **2,667** total sqft

3036 Barnes Way, Iona, Bonneville County, Idaho, United States, 83427



Room Dimensions

Floor 1

Total sqft: 2667

Living area: 1367

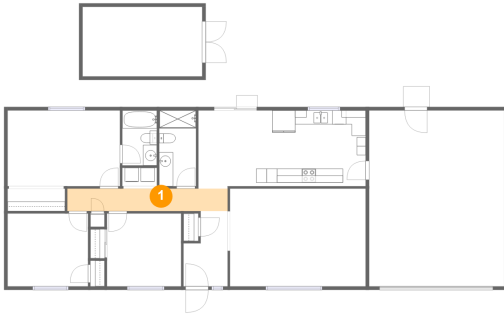
#	Room name	Dimensions	Area (sqft)	Counted as Living Area
1	Hall	23'0" x 3'3"	74 sq. ft	Yes
2	Bath	4'11" x 10'10"	57 sq. ft	Yes
3	Bath	4'11" x 7'10"	39 sq. ft	Yes
4	Patio	38'4" x 11'7"	407 sq. ft	No
5	Shed	17'2" x 9'11"	171 sq. ft	No
6	Bedroom	11'6" x 10'5"	120 sq. ft	Yes
7	Foyer	6'4" x 10'9"	57 sq. ft	Yes
8	Porch	25'8" x 6'9"	175 sq. ft	No
9	Dining Area	8'8" x 11'2"	96 sq. ft	Yes
10	Kitchen	15'3" x 10'4"	165 sq. ft	Yes
11	Garage	19'4" x 25'2"	487 sq. ft	No

**3036 Barnes Way, Iona, Bonneville County,
Idaho, United States, 83427**

#	Room name	Dimensions	Area (sqft)	Counted as Living Area
12	Primary Bedroom	16'1" x 10'10"	174 sq. ft	Yes
13	Bedroom	10'7" x 10'5"	111 sq. ft	Yes
14	Living Room	19'5" x 14'0"	272 sq. ft	Yes

**3036 Barnes Way, Iona, Bonneville County,
Idaho, United States, 83427**

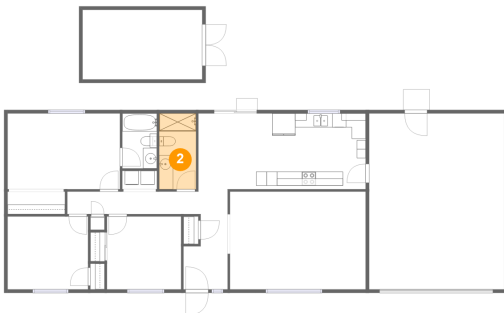
1 Floor 1 - Hall



Dimensions: 23'0" x 3'3"
Area: 74 sq. ft
Counted as Living Area:
Yes

Heated: Yes
Finished: Yes
Enclosed: Yes
Contiguous:
Yes
Permitted: Yes
Wet Space: No
Addition: No
Conversion: No

2 Floor 1 - Bath



Dimensions: 4'11" x 10'10"
Area: 57 sq. ft
Counted as Living Area:
Yes

Heated: Yes
Finished: Yes
Enclosed: Yes
Contiguous:
Yes
Permitted: Yes
Wet Space: Yes
Addition: No
Conversion: No

**3036 Barnes Way, Iona, Bonneville County,
Idaho, United States, 83427**

3 Floor 1 - Bath



Dimensions: 4'11" x 7'10"
Area: 39 sq. ft
Counted as Living Area:
Yes

Heated: Yes
Finished: Yes
Enclosed: Yes
Contiguous:
Yes
Permitted: Yes
Wet Space: Yes
Addition: No
Conversion: No

4 Floor 1 - Patio



Dimensions: 38'4" x 11'7"
Area: 407 sq. ft
Counted as Living Area: No

Heated: No
Finished: Yes
Enclosed: No
Contiguous: Yes
Permitted: Yes
Wet Space: No
Addition: No
Conversion: No

5 Floor 1 - Shed



Dimensions: 17'2" x 9'11"
Area: 171 sq. ft
Counted as Living Area: No

Heated: No
Finished: No
Enclosed: No
Contiguous: Yes
Permitted: Yes
Wet Space: No
Addition: No
Conversion: No

**3036 Barnes Way, Iona, Bonneville County,
Idaho, United States, 83427**

6 Floor 1 - Bedroom



Dimensions: 11'6" x 10'5"
Area: 120 sq. ft
Counted as Living Area:
Yes

Heated: Yes
Finished: Yes
Enclosed: Yes
Contiguous:
Yes
Permitted: Yes
Wet Space: No
Addition: No
Conversion: No

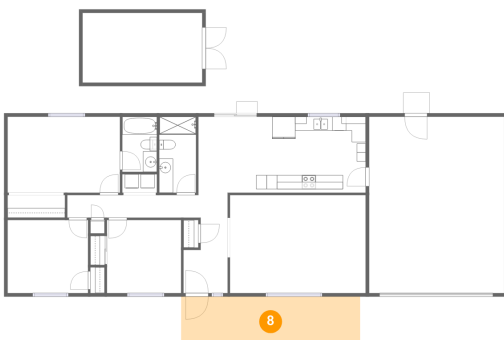
7 Floor 1 - Foyer



Dimensions: 6'4" x 10'9"
Area: 57 sq. ft
Counted as Living Area:
Yes

Heated: Yes
Finished: Yes
Enclosed: Yes
Contiguous:
Yes
Permitted: Yes
Wet Space: No
Addition: No
Conversion: No

8 Floor 1 - Porch



Dimensions: 25'8" x 6'9"
Area: 175 sq. ft
Counted as Living Area: No

Heated: No
Finished: Yes
Enclosed: No
Contiguous: Yes
Permitted: Yes
Wet Space: No
Addition: No
Conversion: No

**3036 Barnes Way, Iona, Bonneville County,
Idaho, United States, 83427**

9 Floor 1 - Dining Area



Dimensions: 8'8" x 11'2"
Area: 96 sq. ft
Counted as Living Area:
Yes

Heated: Yes
Finished: Yes
Enclosed: Yes
Contiguous:
Yes
Permitted: Yes
Wet Space: No
Addition: No
Conversion: No

10 Floor 1 - Kitchen



Dimensions: 15'3" x 10'4"
Area: 165 sq. ft
Counted as Living Area:
Yes

Heated: Yes
Finished: Yes
Enclosed: Yes
Contiguous:
Yes
Permitted: Yes
Wet Space: No
Addition: No
Conversion: No

11 Floor 1 - Garage

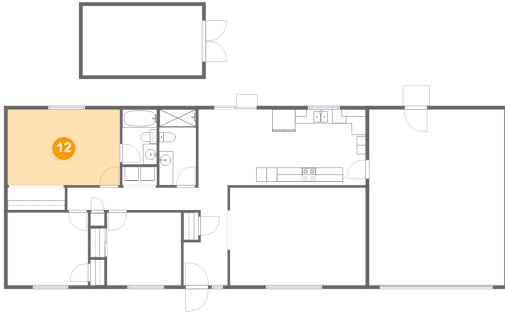


Dimensions: 19'4" x 25'2"
Area: 487 sq. ft
Counted as Living Area: No

Heated: No
Finished: No
Enclosed: Yes
Contiguous: Yes
Permitted: Yes
Wet Space: No
Addition: No
Conversion: No

**3036 Barnes Way, Iona, Bonneville County,
Idaho, United States, 83427**

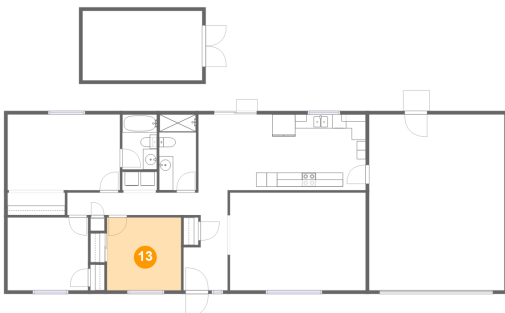
12 Floor 1 - Primary Bedroom



Dimensions: 16'1" x 10'10"
Area: 174 sq. ft
Counted as Living Area:
Yes

Heated: Yes
Finished: Yes
Enclosed: Yes
Contiguous:
Yes
Permitted: Yes
Wet Space: No
Addition: No
Conversion: No

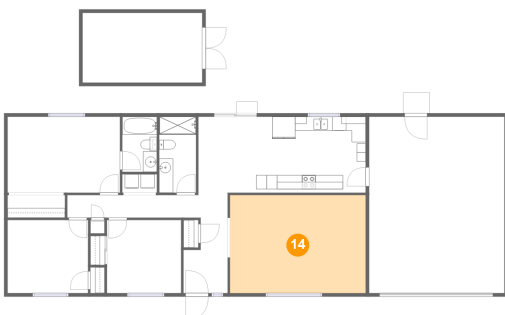
13 Floor 1 - Bedroom



Dimensions: 10'7" x 10'5"
Area: 111 sq. ft
Counted as Living Area:
Yes

Heated: Yes
Finished: Yes
Enclosed: Yes
Contiguous:
Yes
Permitted: Yes
Wet Space: No
Addition: No
Conversion: No

14 Floor 1 - Living Room



Dimensions: 19'5" x 14'0"
Area: 272 sq. ft
Counted as Living Area:
Yes

Heated: Yes
Finished: Yes
Enclosed: Yes
Contiguous:
Yes
Permitted: Yes
Wet Space: No
Addition: No
Conversion: No