

1902 Springfield Avenue, Salem, Salem, Virginia, United States, 24153



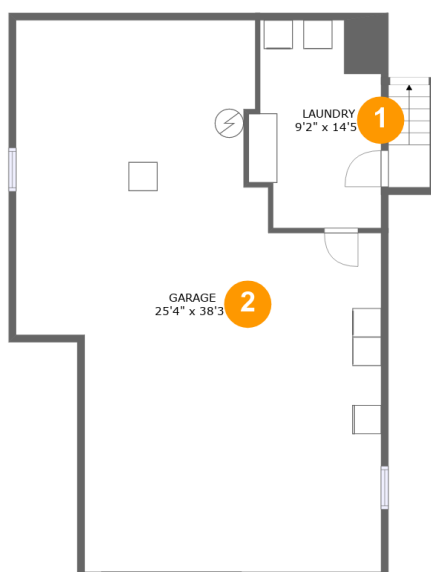
Property Summary

1 garages **3** bedrooms **1** bathrooms **0** half baths

2 floors

1,082 Gross Living Area sqft

2,453 total sqft

**1902 Springfield Avenue, Salem, Salem, Virginia,
United States, 24153****Room Dimensions**

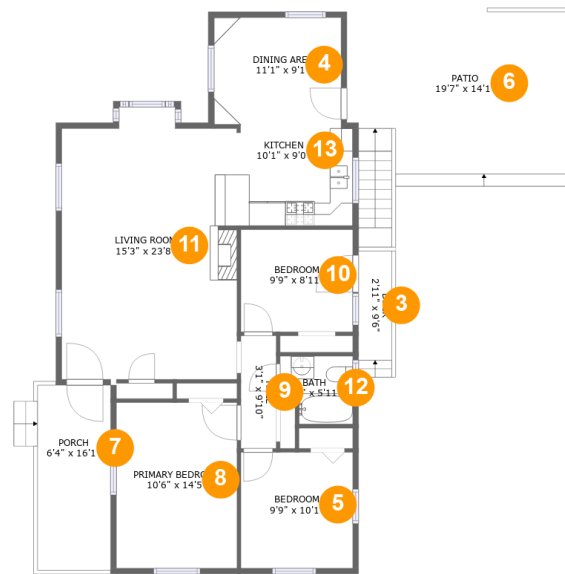
Floor 1

Total sqft: 983

Living area: 0

#	Room name	Dimensions	Area (sqft)	Counted as Living Area
1	Laundry	9'2" x 14'5"	112 sq. ft	No
2	Garage	25'4" x 38'3"	760 sq. ft	No

1902 Springfield Avenue, Salem, Salem, Virginia, United States, 24153



Room Dimensions

Floor 2

Total sqft: 1470

Living area: 1082

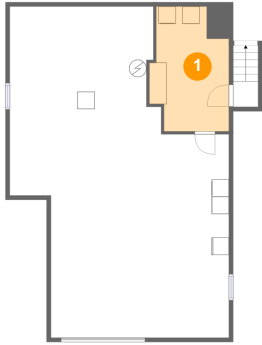
#	Room name	Dimensions	Area (sqft)	Counted as Living Area
3	Deck	2'11" x 9'6"	27 sq. ft	No
4	Dining Area	11'1" x 9'1"	101 sq. ft	Yes
5	Bedroom	9'9" x 10'1"	98 sq. ft	Yes
6	Patio	19'7" x 14'1"	259 sq. ft	No
7	Porch	6'4" x 16'1"	102 sq. ft	No
8	Primary Bedroom	10'6" x 14'5"	151 sq. ft	Yes
9	Hall	3'1" x 9'10"	30 sq. ft	Yes
10	Bedroom	9'9" x 8'11"	87 sq. ft	Yes
11	Living Room	15'3" x 23'8"	341 sq. ft	Yes
12	Bath	6'4" x 5'11"	33 sq. ft	Yes
13	Kitchen	10'1" x 9'0"	90 sq. ft	Yes

Scan captured on Wed, 23 Oct 2024 14:56:16 GMT

Information is calculated by CubiCasa technology; deemed highly reliable but not guaranteed.

1902 Springfield Avenue, Salem, Salem, Virginia, United States, 24153

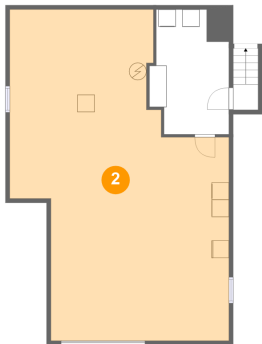
1 Floor 1 - Laundry



Dimensions: 9'2" x 14'5"
Area: 112 sq. ft
Counted as Living Area: No

Heated: Yes
Finished: Yes
Enclosed: Yes
Contiguous: No
Permitted: Yes
Wet Space: No
Addition: No
Conversion: No

2 Floor 1 - Garage



Dimensions: 25'4" x 38'3"
Area: 760 sq. ft
Counted as Living Area: No

Heated: No
Finished: No
Enclosed: Yes
Contiguous: Yes
Permitted: Yes
Wet Space: No
Addition: No
Conversion: No

1902 Springfield Avenue, Salem, Salem, Virginia, United States, 24153

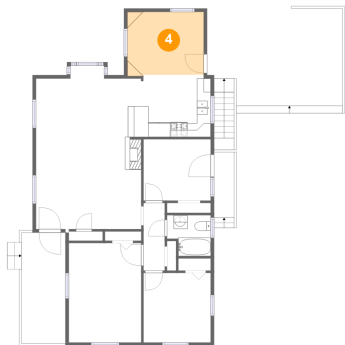
3 Floor 2 - Deck



Dimensions: 2'11" x 9'6"
Area: 27 sq. ft
Counted as Living Area: No

Heated: No
Finished: Yes
Enclosed: No
Contiguous: Yes
Permitted: Yes
Wet Space: No
Addition: No
Conversion: No

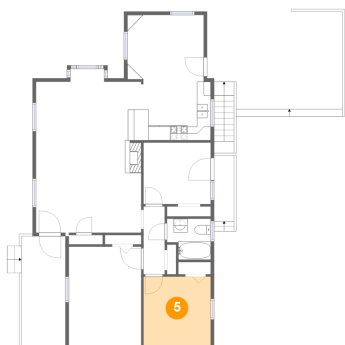
4 Floor 2 - Dining Area



Dimensions: 11'1" x 9'1"
Area: 101 sq. ft
Counted as Living Area:
Yes

Heated: Yes
Finished: Yes
Enclosed: Yes
Contiguous:
Yes
Permitted: Yes
Wet Space: No
Addition: No
Conversion: No

5 Floor 2 - Bedroom

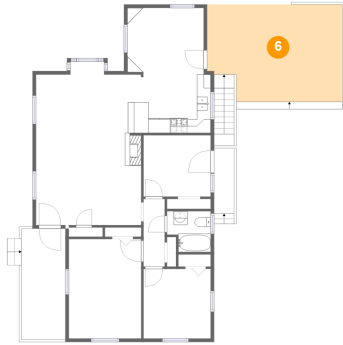


Dimensions: 9'9" x 10'1"
Area: 98 sq. ft
Counted as Living Area:
Yes

Heated: Yes
Finished: Yes
Enclosed: Yes
Contiguous:
Yes
Permitted: Yes
Wet Space: No
Addition: No
Conversion: No

1902 Springfield Avenue, Salem, Salem, Virginia, United States, 24153

6 Floor 2 - Patio



Dimensions: 19'7" x 14'1"
Area: 259 sq. ft
Counted as Living Area: No

Heated: No
Finished: Yes
Enclosed: No
Contiguous: Yes
Permitted: Yes
Wet Space: No
Addition: No
Conversion: No

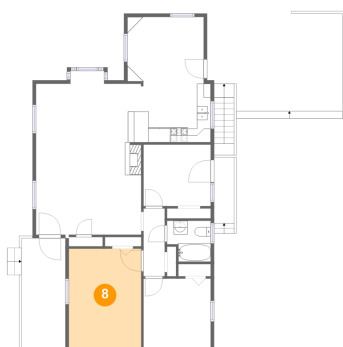
7 Floor 2 - Porch



Dimensions: 6'4" x 16'1"
Area: 102 sq. ft
Counted as Living Area: No

Heated: No
Finished: Yes
Enclosed: No
Contiguous: Yes
Permitted: Yes
Wet Space: No
Addition: No
Conversion: No

8 Floor 2 - Primary Bedroom



Dimensions: 10'6" x 14'5"
Area: 151 sq. ft
Counted as Living Area:
Yes

Heated: Yes
Finished: Yes
Enclosed: Yes
Contiguous:
Yes
Permitted: Yes
Wet Space: No
Addition: No
Conversion: No

1902 Springfield Avenue, Salem, Salem, Virginia, United States, 24153

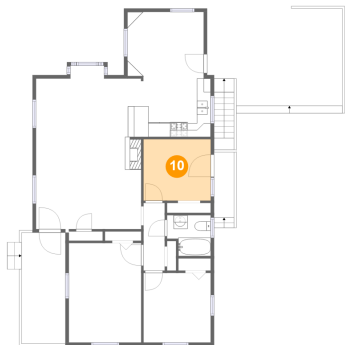
9 Floor 2 - Hall



Dimensions: 3'1" x 9'10"
Area: 30 sq. ft
Counted as Living Area:
Yes

Heated: Yes
Finished: Yes
Enclosed: Yes
Contiguous:
Yes
Permitted: Yes
Wet Space: No
Addition: No
Conversion: No

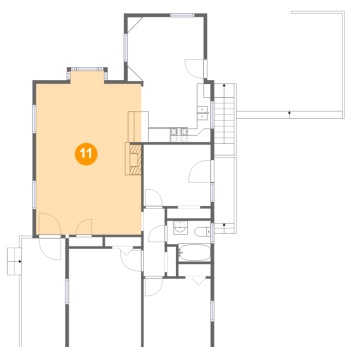
10 Floor 2 - Bedroom



Dimensions: 9'9" x 8'11"
Area: 87 sq. ft
Counted as Living Area:
Yes

Heated: Yes
Finished: Yes
Enclosed: Yes
Contiguous:
Yes
Permitted: Yes
Wet Space: No
Addition: No
Conversion: No

11 Floor 2 - Living Room



Dimensions: 15'3" x 23'8"
Area: 341 sq. ft
Counted as Living Area:
Yes

Heated: Yes
Finished: Yes
Enclosed: Yes
Contiguous:
Yes
Permitted: Yes
Wet Space: No
Addition: No
Conversion: No

1902 Springfield Avenue, Salem, Salem, Virginia, United States, 24153

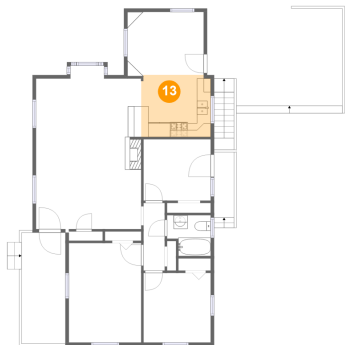
12 Floor 2 - Bath



Dimensions: 6'4" x 5'11"
Area: 33 sq. ft
Counted as Living Area:
Yes

Heated: Yes
Finished: Yes
Enclosed: Yes
Contiguous:
Yes
Permitted: Yes
Wet Space: Yes
Addition: No
Conversion: No

13 Floor 2 - Kitchen



Dimensions: 10'1" x 9'0"
Area: 90 sq. ft
Counted as Living Area:
Yes

Heated: Yes
Finished: Yes
Enclosed: Yes
Contiguous:
Yes
Permitted: Yes
Wet Space: No
Addition: No
Conversion: No