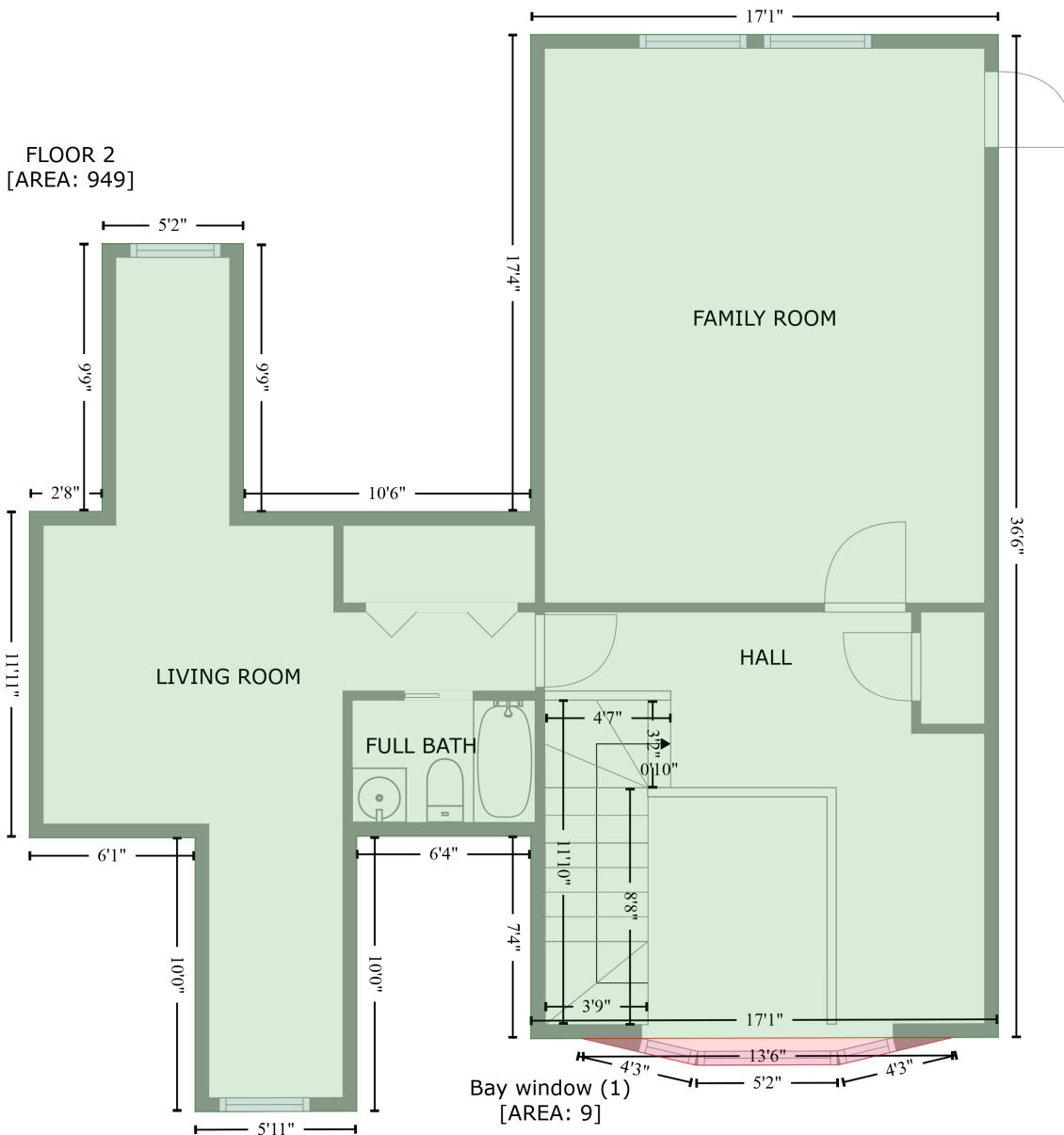


# 2420 Margolin Lane, Allen Creek, Clearwater, Pinellas County, Florida, United States, 33764

Gross Living Area: 5245 sq. ft



Space	Area (sq. ft)	Calculation
FLOOR 1 (Living area)	4296	Coordinate Polygon Area Algorithm using inches $-((819.2 + 819.2) * (-2.1 - 89.3) + (819.2 + 1427.3) * (89.3 - 89.3) + (1427.3 + 1427.3) * (89.3 - 404.3) + (1427.3 + 1278.5) * (404.3 - 404.3) + (1278.5 + 1278.5) * (404.3 - 467.6) + (1278.5 + 1020.1) * (467.6 - 467.6) + (1020.1 + 992.9) * (467.6 - 494.8) + (992.9 + 936.2) * (494.8 - 494) + (936.2 + 909.9) * (494 - 467.3) + (909.9 + 745.6) * (467.3 - 467.8) + (745.6 + 745.5) * (467.8 - 436.4) + (745.5 + 622.9) * (436.4 - 436.7) + (622.9 + 623) * (436.7 - 468.2) + (623 + 542.6) * (468.2 - 468.4) + (542.6 + 548.6) * (468.4 - 468.4) + (548.6 + 548.6) * (468.4 - 715.6) + (548.6 + -1) * (715.6 - 715.6) + (-1 + -1) * (715.6 - 619.8) + (-1 + 123.7) * (619.8 - 619.8) + (123.7 + 123.7) * (619.8 - 454.3) + (123.7 + 8.2) * (454.3 - 454.3) + (8.2 + 8.2) * (454.3 - 340.6) + (8.2 + 174.3) * (340.6 - 340.6) + (174.3 + 174.3) * (340.6 - 89.3) + (174.3 + 614.9) * (89.3 - 89.3) + (614.9 + 614.9) * (89.3 - -2.1) + (614.9 + 819.2) * (-2.1 - -2.1)) * 0.5 * 0.00694$
GARAGE (Non-living area)	586	$-((1427.3 + 1427.3) * (404.3 - 734.7) + (1427.3 + 1146.8) * (734.7 - 734.7) + (1146.8 + 1146.8) * (734.7 - 467.6) + (1146.8 + 1278.5) * (467.6 - 467.6) + (1278.5 + 1278.5) * (467.6 - 404.3) + (1278.5 + 1427.3) * (404.3 - 404.3)) * 0.5 * 0.00694$



Space	Area (sq. ft)	Calculation <small>Coordinate Polygon Area Algorithm using inches</small>
FLOOR 2 (Living area)	949	$  \begin{aligned}  & -((819.1 + 819.1) * (-2.1 - 436.2) + (819.1 + 660.2) * (436.2 - 436.6) + (660.2 + 636.8) * (436.6 - \\  & 436.7) + (636.8 + 614.5) * (436.7 - 436.8) + (614.5 + 614.5) * (436.8 - 348.3) + (614.5 + 538.3) * \\  & (348.3 - 348.3) + (538.3 + 538.3) * (348.3 - 468.4) + (538.3 + 467.5) * (468.4 - 468.7) + (467.5 + \\  & 467.5) * (468.7 - 348.9) + (467.5 + 395) * (348.9 - 348.9) + (395 + 395) * (348.9 - 206.3) + (395 + \\  & 426.8) * (206.3 - 206.3) + (426.8 + 426.8) * (206.3 - 89.3) + (426.8 + 488.7) * (89.3 - 89.3) + \\  & (488.7 + 488.7) * (89.3 - 206.4) + (488.7 + 614.4) * (206.4 - 206.4) + (614.4 + 614.4) * (206.4 - \\  & -2.1) + (614.4 + 819.1) * (-2.1 - -2.1)) * 0.5 * 0.00694  \end{aligned}  $

# 2420 Margolin Lane, Allen Creek, Clearwater, Pinellas County, Florida, United States, 33764

Gross Living Area: 5245 sq. ft

Space	Area (sq. ft)	Calculation <small>Coordinate Polygon Area Algorithm using inches</small>
Bay window (Non-living area)	9	$-((799.2 + 749.3) * (436.2 - 448.2) + (749.3 + 686.8) * (448.2 - 448.3) + (686.8 + 636.8) * (448.3 - 436.7) + (636.8 + 799.2) * (436.7 - 436.2)) * 0.5 * 0.00694$