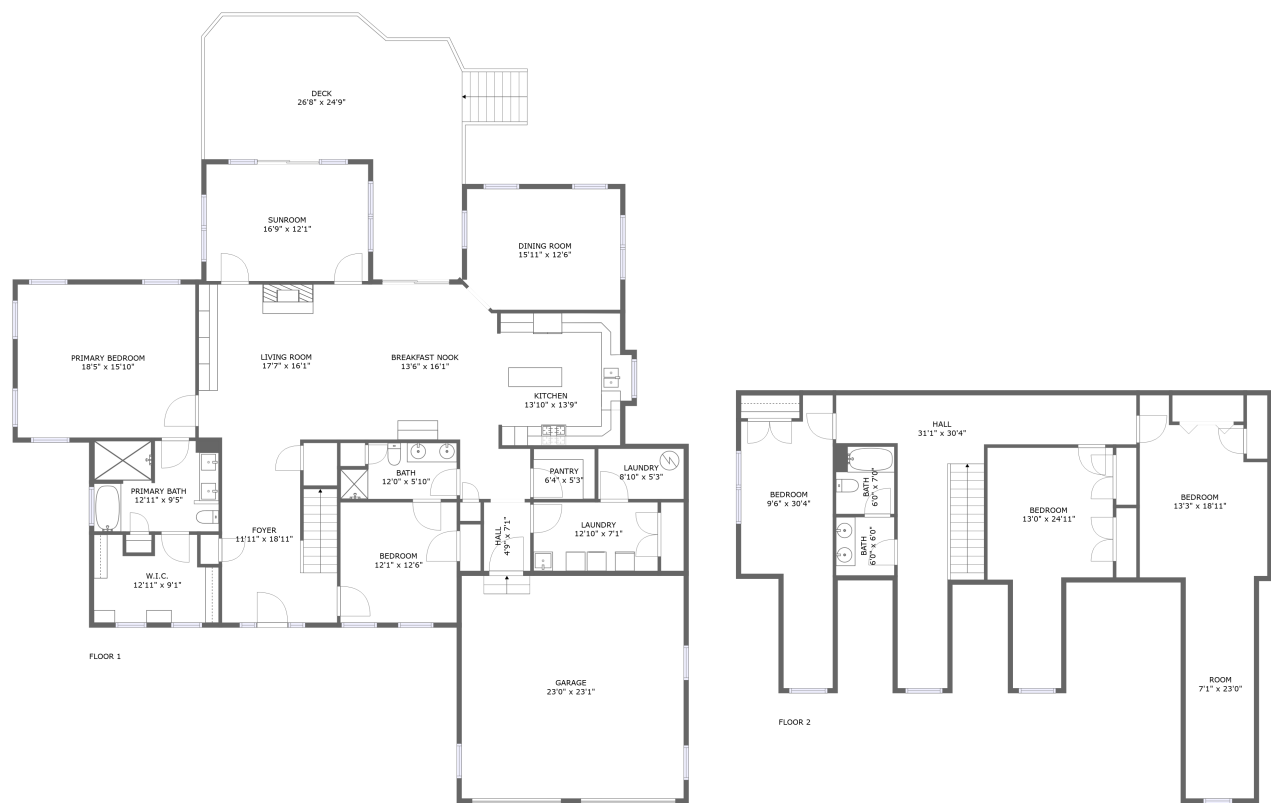




Home report


19711 Beall Street, Poolesville, Montgomery County, Maryland,
United States, 20837





Property summary


 **1** Garages


 **5** Bedrooms

 **3** Bathrooms

 **0** Half baths

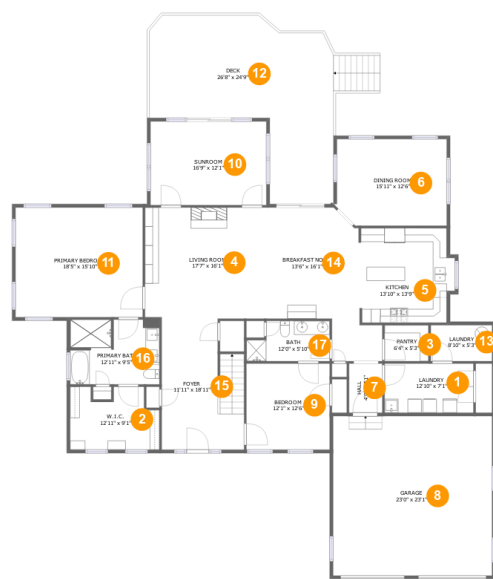
 **2** Floors

 **4,004** Gross living area sqft

 **5,068** Total sqft

Home report

19711 Beall Street, Poolesville, Montgomery County, Maryland,
United States, 20837



Room dimensions

Floor 1

Total sqft: 3571

Living area: 2526

| # | | Max Dimensions | sqft | Included |
|----|-----------------|----------------|------------|----------|
| 1 | Laundry | 12'10" x 7'1" | 91 sq. ft | Yes |
| 2 | W.I.C. | 12'11" x 9'1" | 103 sq. ft | Yes |
| 3 | Pantry | 6'4" x 5'3" | 33 sq. ft | Yes |
| 4 | Living Room | 17'7" x 16'1" | 282 sq. ft | Yes |
| 5 | Kitchen | 13'10" x 13'9" | 177 sq. ft | Yes |
| 6 | Dining Room | 15'11" x 12'6" | 196 sq. ft | Yes |
| 7 | Hall | 4'9" x 7'1" | 34 sq. ft | Yes |
| 8 | Garage | 23'0" x 23'1" | 530 sq. ft | No |
| 9 | Bedroom | 12'1" x 12'6" | 150 sq. ft | Yes |
| 10 | Sunroom | 16'9" x 12'1" | 203 sq. ft | Yes |
| 11 | Primary Bedroom | 18'5" x 15'10" | 292 sq. ft | Yes |

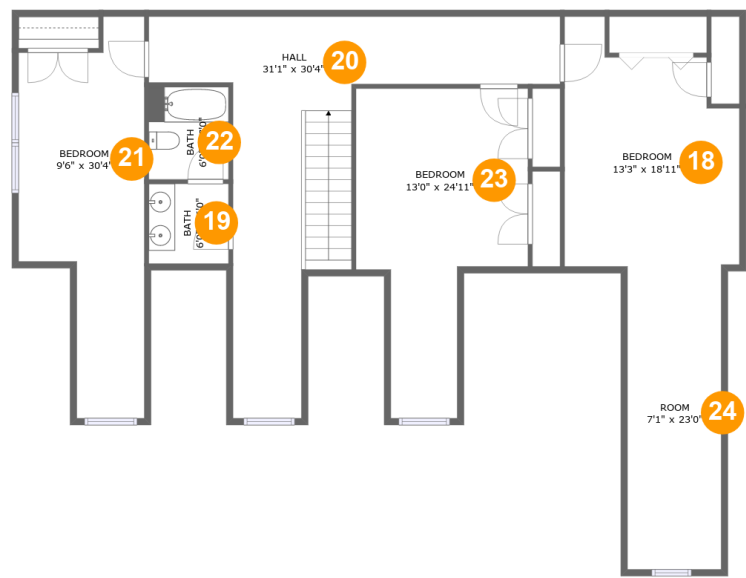
Home report

**19711 Beall Street, Poolesville, Montgomery County, Maryland,
United States, 20837**

| # | | Max Dimensions | sqft | Included |
|----|----------------|-----------------|------------|----------|
| 12 | Deck | 26'8" x 24'9" | 482 sq. ft | No |
| 13 | Laundry | 8'10" x 5'3" | 46 sq. ft | Yes |
| 14 | Breakfast Nook | 13'6" x 16'1" | 253 sq. ft | Yes |
| 15 | Foyer | 11'11" x 18'11" | 206 sq. ft | Yes |
| 16 | Primary Bath | 12'11" x 9'5" | 119 sq. ft | Yes |
| 17 | Bath | 12'0" x 5'10" | 62 sq. ft | Yes |

Home report

19711 Beall Street, Poolesville, Montgomery County, Maryland,
United States, 20837



Room dimensions

Floor 2 Total sqft: 1497 Living area: 1478

| # | | Max Dimensions | sqft | Included |
|----|---------|----------------|------------|----------|
| 18 | Bedroom | 13'3" x 18'11" | 208 sq. ft | Yes |
| 19 | Bath | 6'0" x 6'0" | 36 sq. ft | Yes |
| 20 | Hall | 31'1" x 30'4" | 343 sq. ft | Yes |
| 21 | Bedroom | 9'6" x 30'4" | 219 sq. ft | Yes |
| 22 | Bath | 6'0" x 7'0" | 42 sq. ft | Yes |
| 23 | Bedroom | 13'0" x 24'11" | 233 sq. ft | Yes |
| 24 | Room | 7'1" x 23'0" | 163 sq. ft | Yes |

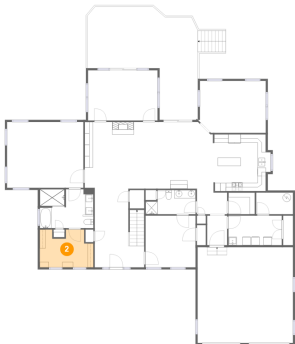
1 Floor 1 - Laundry



Max Dimensions: 12'10" x 7'1"
Calculated Area: 91 sq. ft
Included: Yes

Heated: Yes
Finished: Yes
Enclosed: Yes
Contiguous: Yes
Permitted: Yes
Wet space: No
Addition: No
Conversion: No

2 Floor 1 - W.I.C.



Max Dimensions: 12'11" x 9'1"
Calculated Area: 103 sq. ft
Included: Yes

Heated: Yes
Finished: Yes
Enclosed: Yes
Contiguous: Yes
Permitted: Yes
Wet space: No
Addition: No
Conversion: No

3 Floor 1 - Pantry



Max Dimensions: 6'4" x 5'3"
Calculated Area: 33 sq. ft
Included: Yes

Heated: Yes
Finished: Yes
Enclosed: Yes
Contiguous: Yes
Permitted: Yes
Wet space: No
Addition: No
Conversion: No

4 Floor 1 - Living Room



Max Dimensions: 17'7" x 16'1"
Calculated Area: 282 sq. ft
Included: Yes

Heated: Yes
Finished: Yes
Enclosed: Yes
Contiguous: Yes
Permitted: Yes
Wet space: No
Addition: No
Conversion: No

5 Floor 1 - Kitchen



Max Dimensions: 13'10" x 13'9"
Calculated Area: 177 sq. ft
Included: Yes

Heated: Yes
Finished: Yes
Enclosed: Yes
Contiguous: Yes
Permitted: Yes
Wet space: No
Addition: No
Conversion: No

6 Floor 1 - Dining Room



Max Dimensions: 15'11" x 12'6"
Calculated Area: 196 sq. ft
Included: Yes

Heated: Yes
Finished: Yes
Enclosed: Yes
Contiguous: Yes
Permitted: Yes
Wet space: No
Addition: No
Conversion: No

7 Floor 1 - Hall



Max Dimensions: 4'9" x 7'1"
Calculated Area: 34 sq. ft
Included: Yes

Heated: Yes
Finished: Yes
Enclosed: Yes
Contiguous: Yes
Permitted: Yes
Wet space: No
Addition: No
Conversion: No

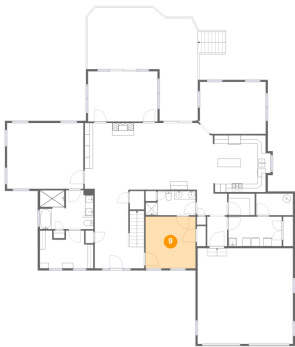
8 Floor 1 - Garage



Max Dimensions: 23'0" x 23'1"
Calculated Area: 530 sq. ft
Included: No

Heated: No
Finished: No
Enclosed: Yes
Contiguous: Yes
Permitted: Yes
Wet space: No
Addition: No
Conversion: No

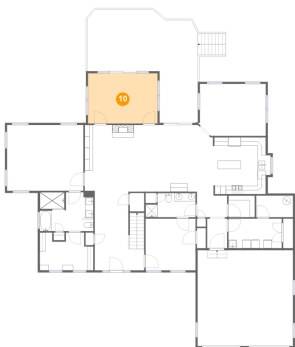
9 Floor 1 - Bedroom



Max Dimensions: 12'1" x 12'6"
Calculated Area: 150 sq. ft
Included: Yes

Heated: Yes
Finished: Yes
Enclosed: Yes
Contiguous: Yes
Permitted: Yes
Wet space: No
Addition: No
Conversion: No

10 Floor 1 - Sunroom



Max Dimensions: 16'9" x 12'1"
Calculated Area: 203 sq. ft
Included: Yes

Heated: Yes
Finished: Yes
Enclosed: Yes
Contiguous: Yes
Permitted: Yes
Wet space: No
Addition: No
Conversion: No

11 Floor 1 - Primary Bedroom



Max Dimensions: 18'5" x 15'10"
Calculated Area: 292 sq. ft
Included: Yes

Heated: Yes
Finished: Yes
Enclosed: Yes
Contiguous: Yes
Permitted: Yes
Wet space: No
Addition: No
Conversion: No

19711 Beall Street, Poolesville, Montgomery County, Maryland,
United States, 20837

12 Floor 1 - Deck



Max Dimensions: 26'8" x
24'9"
Calculated Area: 482 sq. ft
Included: No

Heated: No
Finished: Yes
Enclosed: No
Contiguous:
Yes
Permitted: Yes
Wet space: No
Addition: No
Conversion: No

13 Floor 1 - Laundry



Max Dimensions: 8'10" x
5'3"
Calculated Area: 46 sq. ft
Included: Yes

Heated: Yes
Finished: Yes
Enclosed: Yes
Contiguous:
Yes
Permitted: Yes
Wet space: No
Addition: No
Conversion: No

14 Floor 1 - Breakfast Nook



Max Dimensions: 13'6" x
16'1"
Calculated Area: 253 sq. ft
Included: Yes

Heated: Yes
Finished: Yes
Enclosed: Yes
Contiguous:
Yes
Permitted: Yes
Wet space: No
Addition: No
Conversion: No

19711 Beall Street, Poolesville, Montgomery County, Maryland,
United States, 20837

15 Floor 1 - Foyer



Max Dimensions: 11'11" x 18'11"
Calculated Area: 206 sq. ft
Included: Yes

Heated: Yes
Finished: Yes
Enclosed: Yes
Contiguous: Yes
Permitted: Yes
Wet space: No
Addition: No
Conversion: No

16 Floor 1 - Primary Bath



Max Dimensions: 12'11" x 9'5"
Calculated Area: 119 sq. ft
Included: Yes

Heated: Yes
Finished: Yes
Enclosed: Yes
Contiguous: Yes
Permitted: Yes
Wet space: Yes
Addition: No
Conversion: No

17 Floor 1 - Bath



Max Dimensions: 12'0" x 5'10"
Calculated Area: 62 sq. ft
Included: Yes

Heated: Yes
Finished: Yes
Enclosed: Yes
Contiguous: Yes
Permitted: Yes
Wet space: Yes
Addition: No
Conversion: No

19711 Beall Street, Poolesville, Montgomery County, Maryland,
United States, 20837

18 Floor 2 - Bedroom



Max Dimensions: 13'3" x 18'11"
Calculated Area: 208 sq. ft
Included: Yes

Heated: Yes
Finished: Yes
Enclosed: Yes
Contiguous: Yes
Permitted: Yes
Wet space: No
Addition: No
Conversion: No

19 Floor 2 - Bath



Max Dimensions: 6'0" x 6'0"
Calculated Area: 36 sq. ft
Included: Yes

Heated: Yes
Finished: Yes
Enclosed: Yes
Contiguous: Yes
Permitted: Yes
Wet space: Yes
Addition: No
Conversion: No

20 Floor 2 - Hall



Max Dimensions: 31'1" x 30'4"
Calculated Area: 343 sq. ft
Included: Yes

Heated: Yes
Finished: Yes
Enclosed: Yes
Contiguous: Yes
Permitted: Yes
Wet space: No
Addition: No
Conversion: No

21 Floor 2 - Bedroom



Max Dimensions: 9'6" x 30'4"
Calculated Area: 219 sq. ft
Included: Yes

Heated: Yes
Finished: Yes
Enclosed: Yes
Contiguous: Yes
Permitted: Yes
Wet space: No
Addition: No
Conversion: No

22 Floor 2 - Bath



Max Dimensions: 6'0" x 7'0"
Calculated Area: 42 sq. ft
Included: Yes

Heated: Yes
Finished: Yes
Enclosed: Yes
Contiguous: Yes
Permitted: Yes
Wet space: Yes
Addition: No
Conversion: No

23 Floor 2 - Bedroom



Max Dimensions: 13'0" x 24'11"
Calculated Area: 233 sq. ft
Included: Yes

Heated: Yes
Finished: Yes
Enclosed: Yes
Contiguous: Yes
Permitted: Yes
Wet space: No
Addition: No
Conversion: No

24 Floor 2 - Room



Max Dimensions: 7'1" x 23'0"
Calculated Area: 163 sq. ft
Included: Yes

Heated: Yes
Finished: Yes
Enclosed: Yes
Contiguous: Yes
Permitted: Yes
Wet space: No
Addition: No
Conversion: No