

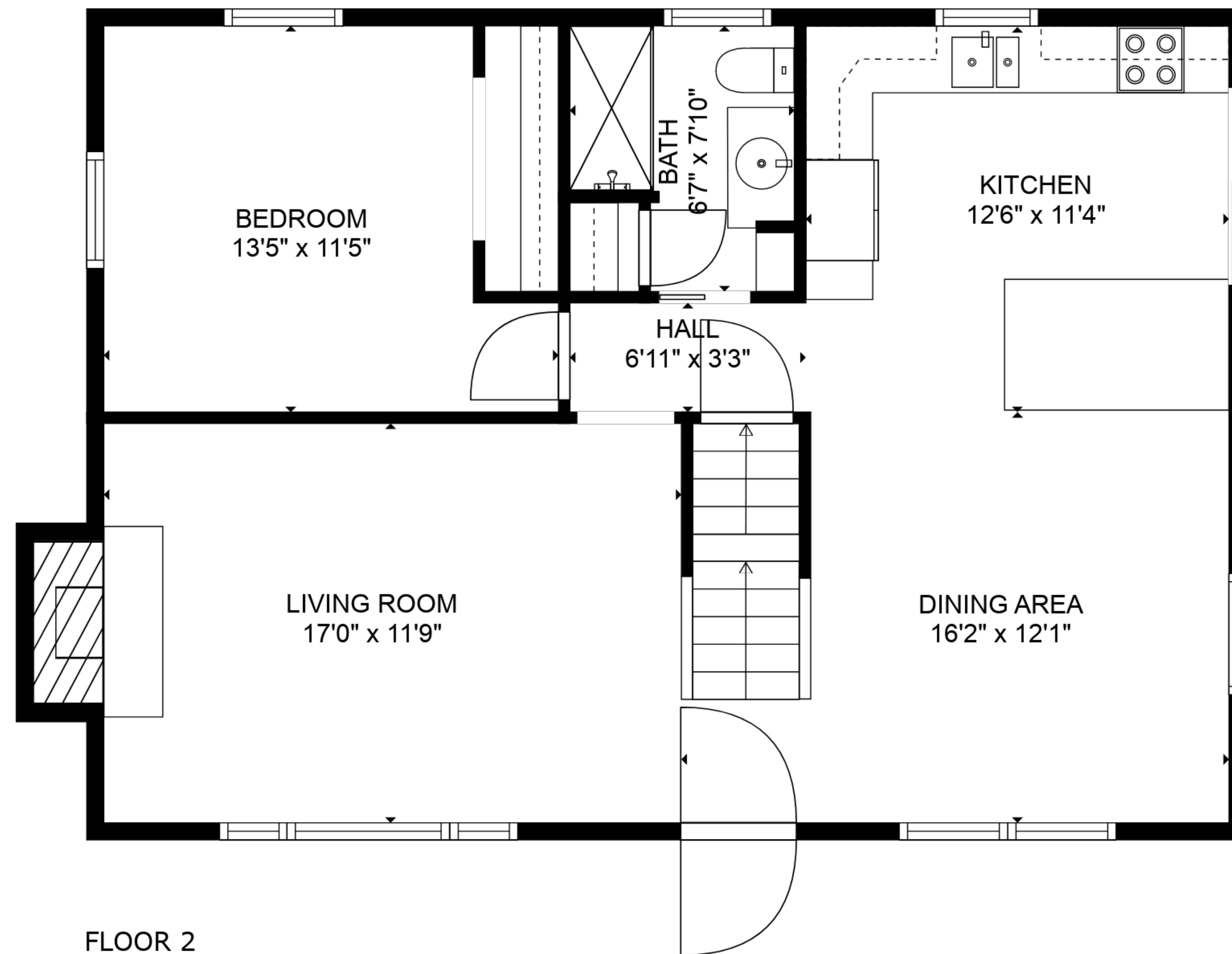
PRIMARY BEDROOM
13'3" x 14'2"

BATH
6'11" x 8'0"

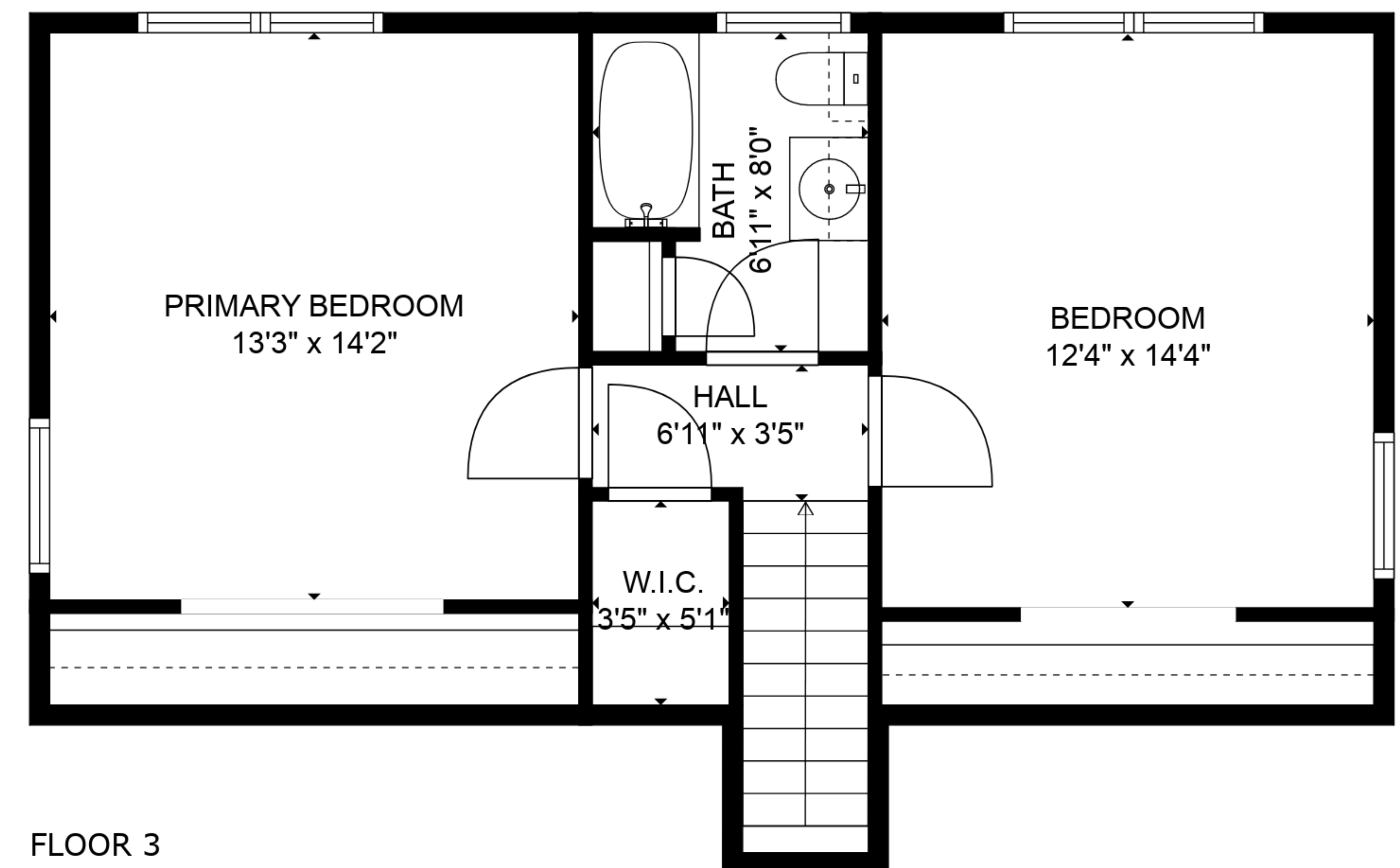
BEDROOM
12'4" x 14'4"

HALL
6'11" x 3'5"

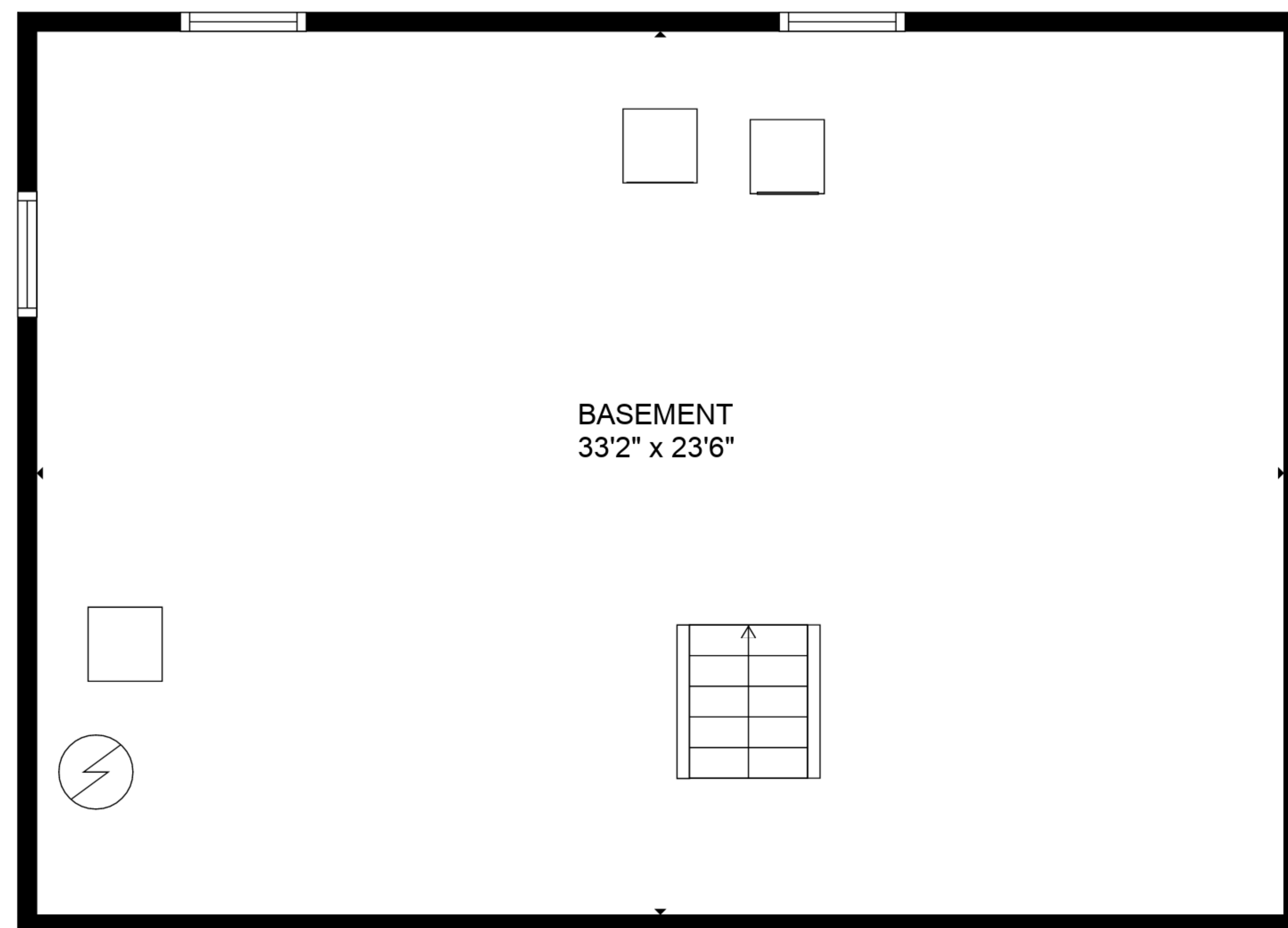
W.I.C.
3'5" x 5'1"



FLOOR 2



FLOOR 3



FLOOR 1

TOTAL: 1352 sq. ft

BELOW GROUND: 0 sq. ft, FLOOR 2: 782 sq. ft, FLOOR 3: 570 sq. ft
 EXCLUDED AREAS: BASEMENT: 779 sq. ft, FIREPLACE: 12 sq. ft, WALLS: 168 sq. ft