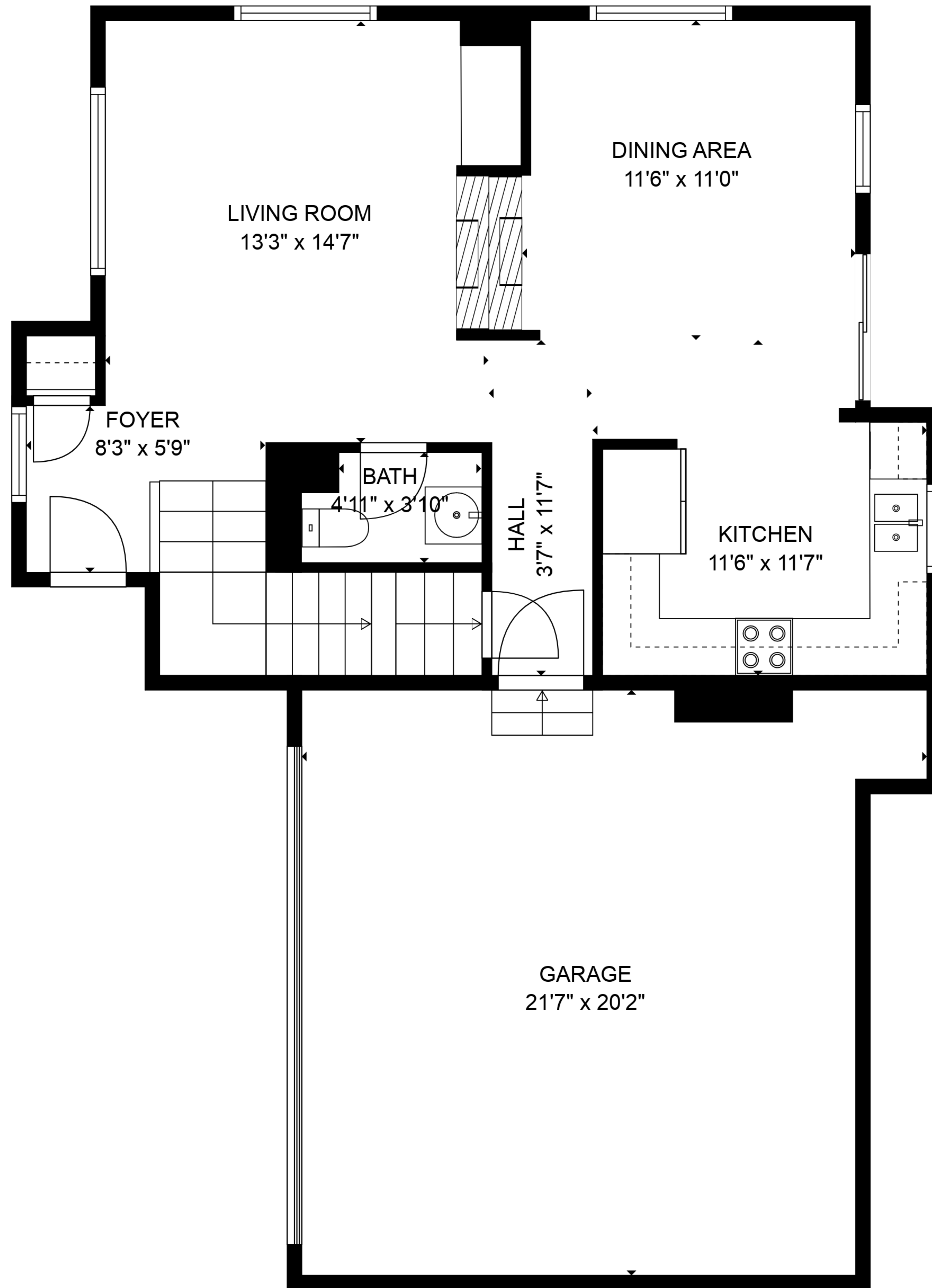


BASEMENT  
29'5" x 20'8"

**TOTAL: 1468 sq. ft**  
BELOW GROUND: 0 sq. ft, FLOOR 2: 624 sq. ft, FLOOR 3: 844 sq. ft  
EXCLUDED AREAS: BASEMENT: 539 sq. ft, GARAGE: 394 sq. ft

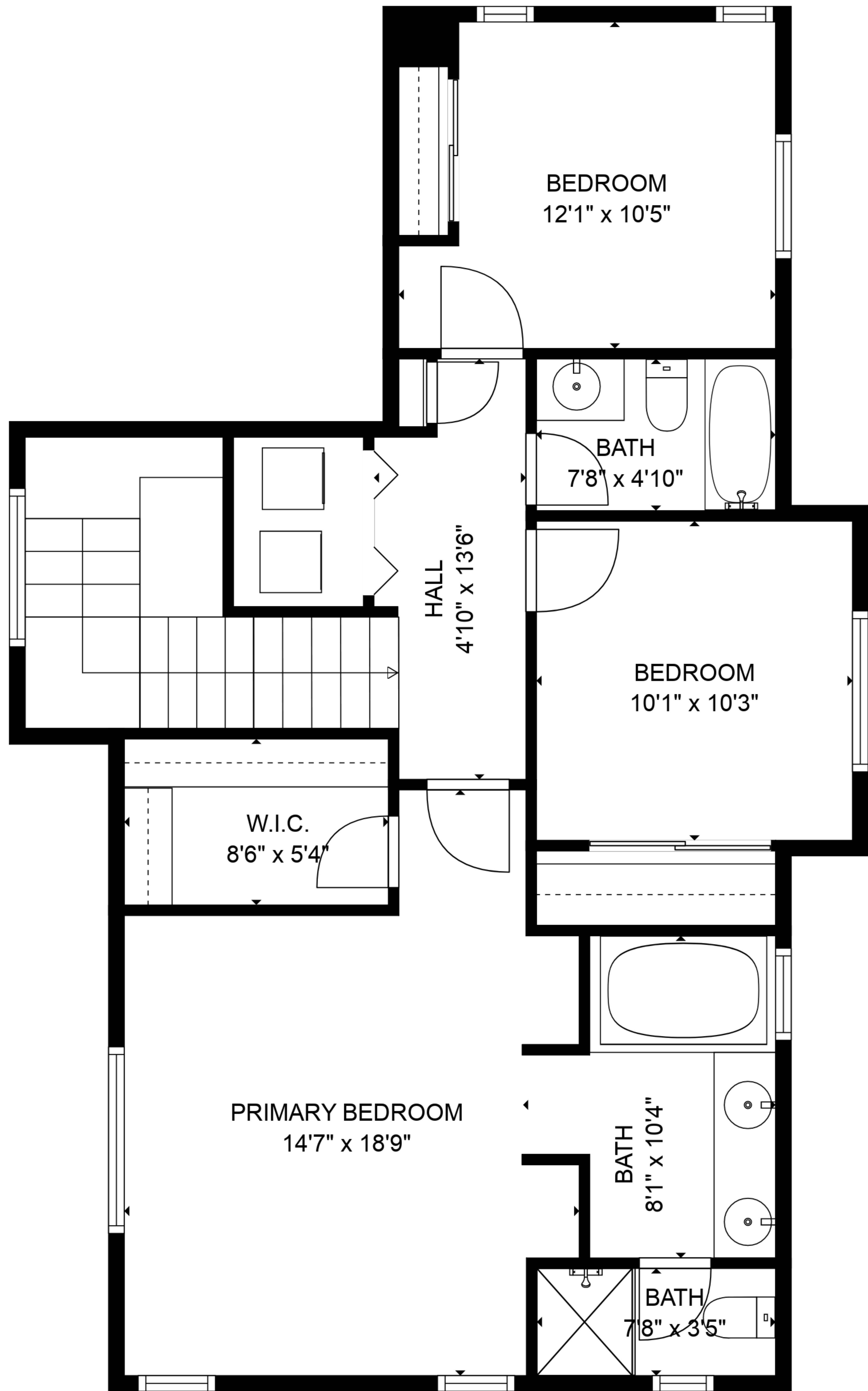
SIZES AND DIMENSIONS ARE APPROXIMATE, ACTUAL MAY VARY.



**TOTAL: 1468 sq. ft**

BELOW GROUND: 0 sq. ft, FLOOR 2: 624 sq. ft, FLOOR 3: 844 sq. ft  
EXCLUDED AREAS: BASEMENT: 539 sq. ft, GARAGE: 394 sq. ft

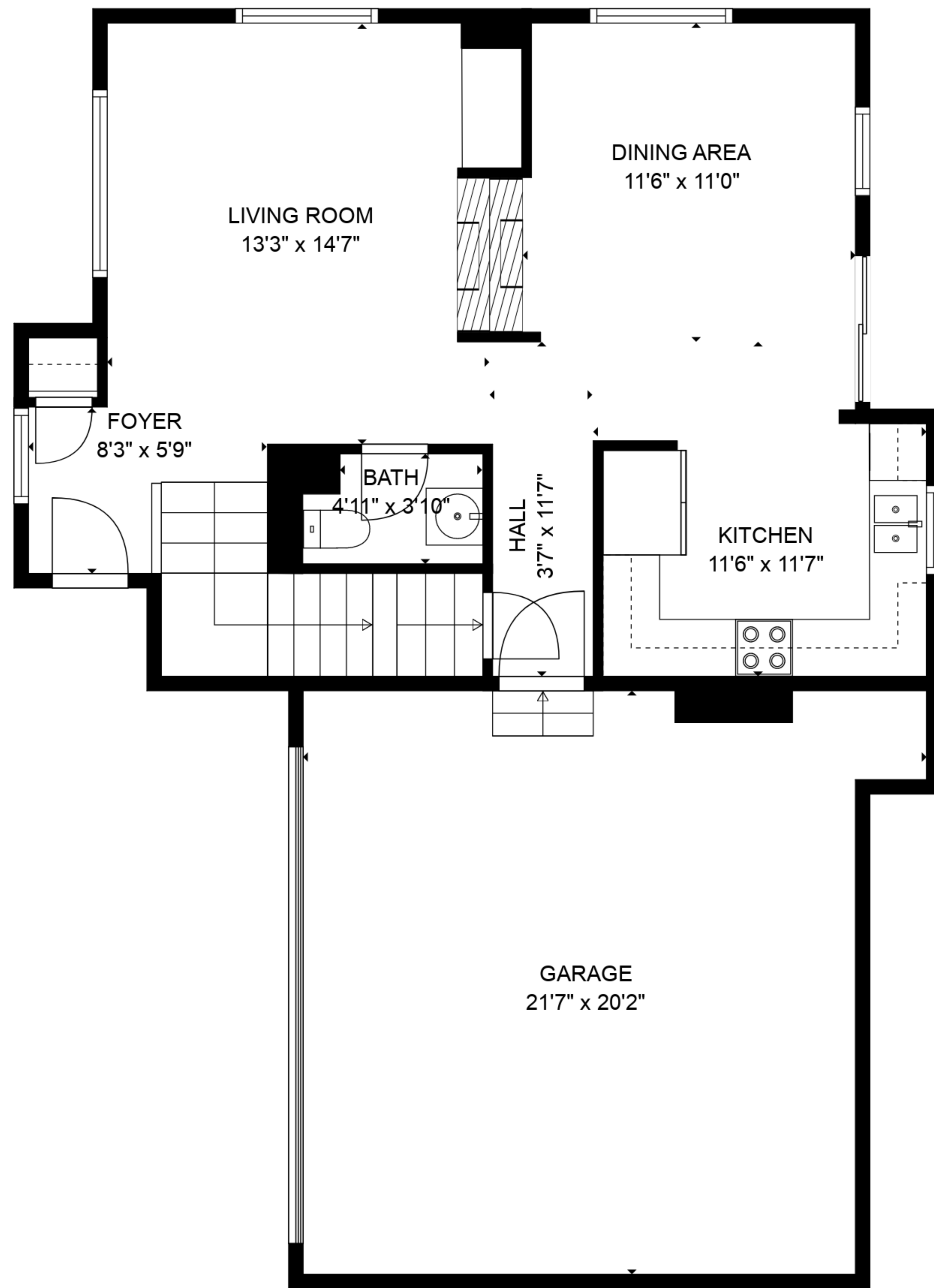
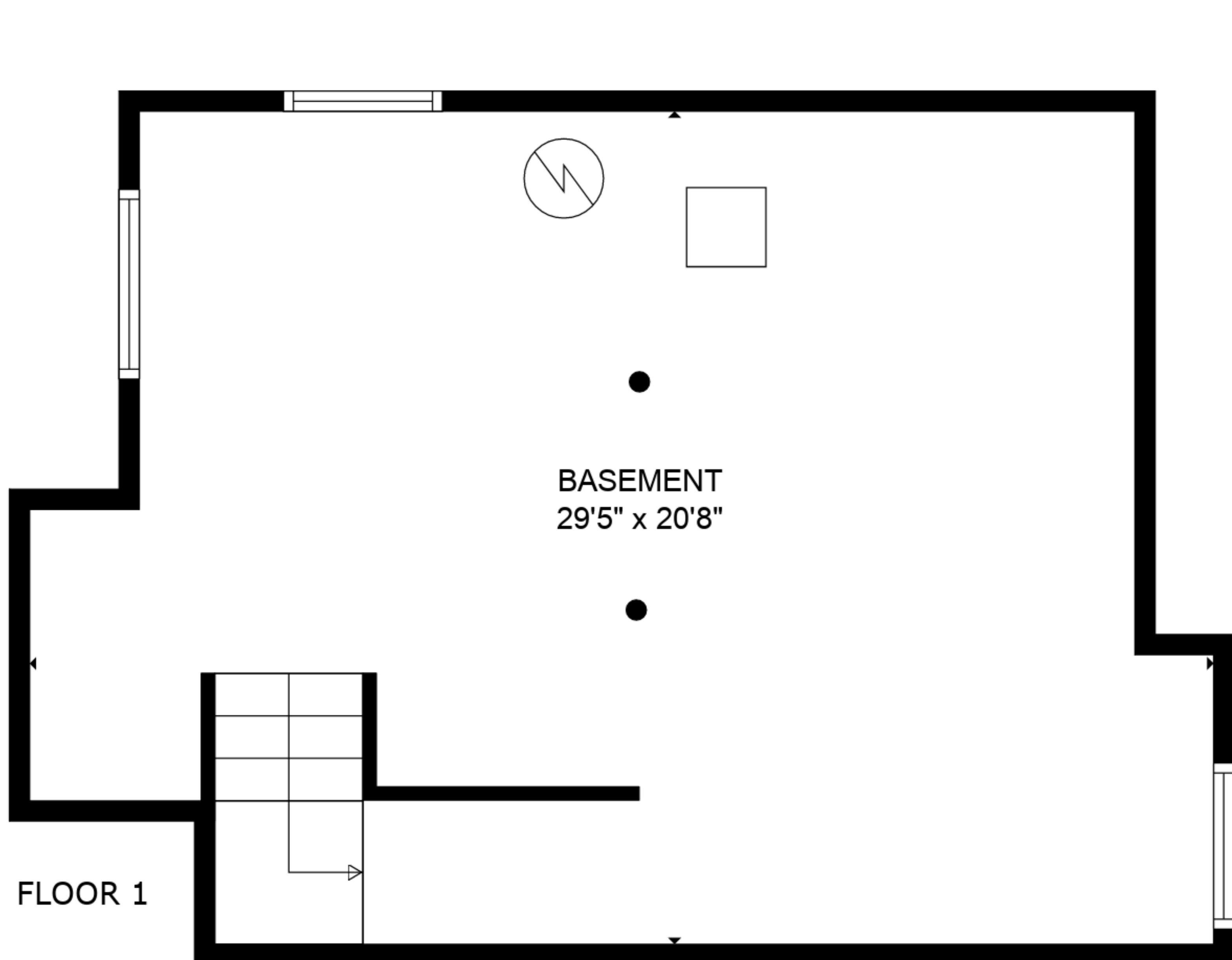
SIZES AND DIMENSIONS ARE APPROXIMATE, ACTUAL MAY VARY.



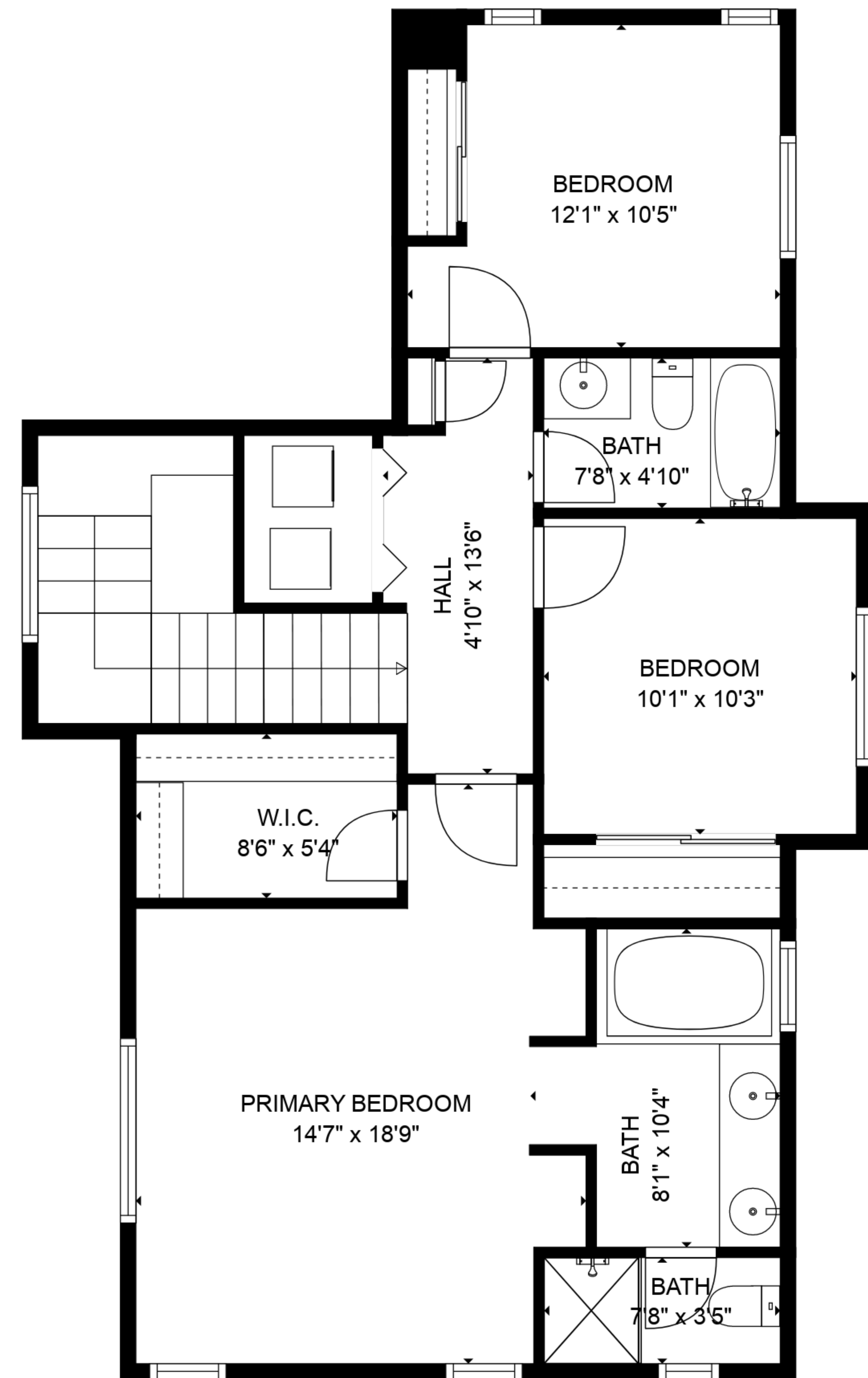
**TOTAL: 1468 sq. ft**

BELOW GROUND: 0 sq. ft, FLOOR 2: 624 sq. ft, FLOOR 3: 844 sq. ft  
 EXCLUDED AREAS: BASEMENT: 539 sq. ft, GARAGE: 394 sq. ft

SIZES AND DIMENSIONS ARE APPROXIMATE, ACTUAL MAY VARY.



FLOOR 2



FLOOR 3

**TOTAL: 1468 sq. ft**  
 BELOW GROUND: 0 sq. ft, FLOOR 2: 624 sq. ft, FLOOR 3: 844 sq. ft  
 EXCLUDED AREAS: BASEMENT: 539 sq. ft, GARAGE: 394 sq. ft

SIZES AND DIMENSIONS ARE APPROXIMATE, ACTUAL MAY VARY.