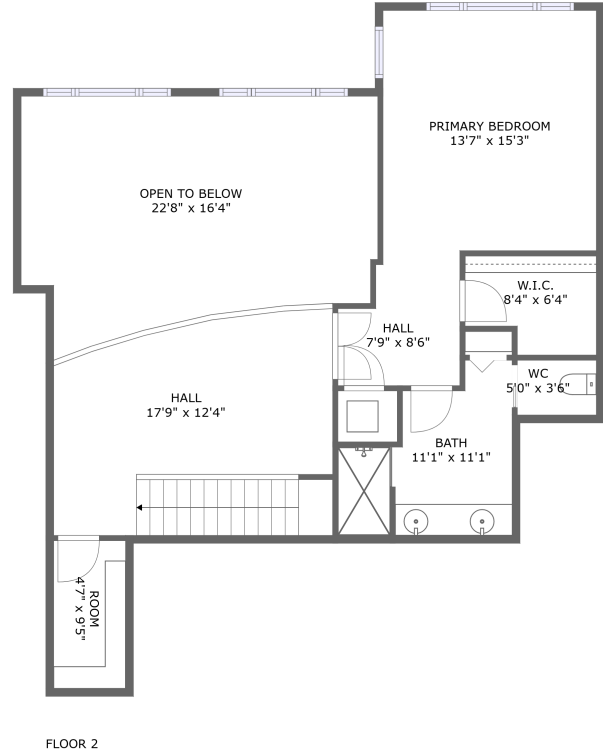
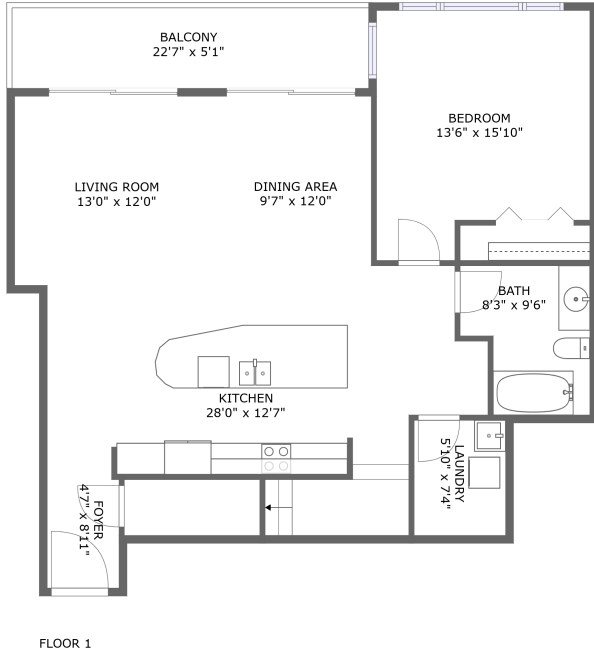



470 Mandalay Avenue, Clearwater Beach, Pinellas County, Florida, United States, 33767, 306



Property summary


 **0** Garages

 **2** Bedrooms

 **2** Bathrooms

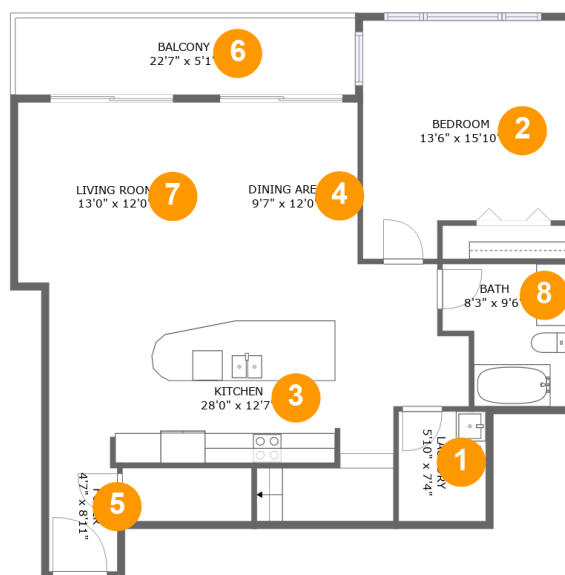
 **0** Half baths

 **2** Floors

 **1,782** Gross living area sqft

 **2,214** Total sqft

470 Mandalay Avenue, Clearwater Beach, Pinellas County, Florida, United States, 33767, 306



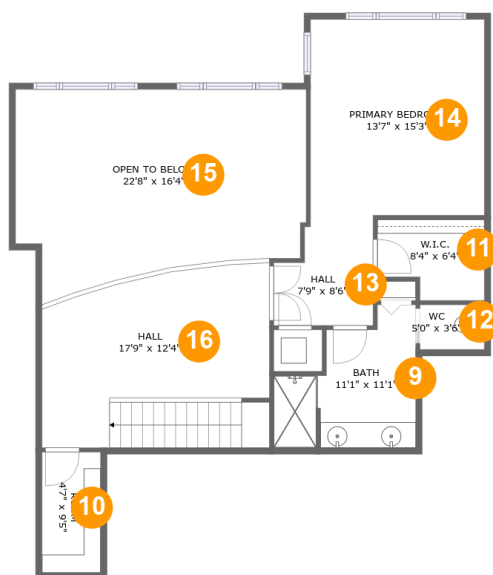
Room dimensions

Floor 1

Total sqft: 1151 Living area: 1035

#		Dimensions	sqft	Counted as living area
1	Utility	5'10" x 7'4"	42 sq. ft	Yes
2	Bedroom	13'6" x 15'10"	193 sq. ft	Yes
3	Kitchen	28'0" x 12'7"	341 sq. ft	Yes
4	Dining Room	9'7" x 12'0"	115 sq. ft	Yes
5	Entry	4'7" x 8'11"	40 sq. ft	Yes
6	Outdoor	22'7" x 5'1"	116 sq. ft	No
7	Living Room	13'0" x 12'0"	157 sq. ft	Yes
8	Bath	8'3" x 9'6"	68 sq. ft	Yes

470 Mandalay Avenue, Clearwater Beach, Pinellas County, Florida, United States, 33767, 306



Room dimensions

Floor 2

Total sqft: 1063 Living area: 747

#		Dimensions	sqft	Counted as living area
9	Bath	11'1" x 11'1"	92 sq. ft	Yes
10	Room	4'7" x 9'5"	43 sq. ft	Yes
11	Cl	8'4" x 6'4"	46 sq. ft	Yes
12	Bath	5'0" x 3'6"	17 sq. ft	Yes
13	Hall	7'9" x 8'6"	57 sq. ft	Yes
14	Bedroom	13'7" x 15'3"	207 sq. ft	Yes
15	Open To Below	22'8" x 16'4"	316 sq. ft	No
16	Hall	17'9" x 12'4"	238 sq. ft	Yes

470 Mandalay Avenue, Clearwater Beach, Pinellas County, Florida, United States, 33767, 306

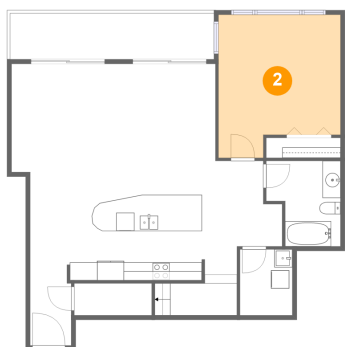
1 Floor 1 - Utility



Dimensions: 5'10" x 7'4"
Area: 42 sq. ft
Counted as living area: Yes

Heated: Yes
Finished: Yes
Enclosed: Yes
Contiguous: Yes
Permitted: Yes
Wet space: No
Addition: No
Conversion: No

2 Floor 1 - Bedroom



Dimensions: 13'6" x 15'10"
Area: 193 sq. ft
Counted as living area: Yes

Heated: Yes
Finished: Yes
Enclosed: Yes
Contiguous: Yes
Permitted: Yes
Wet space: No
Addition: No
Conversion: No

470 Mandalay Avenue, Clearwater Beach, Pinellas County, Florida, United States, 33767, 306

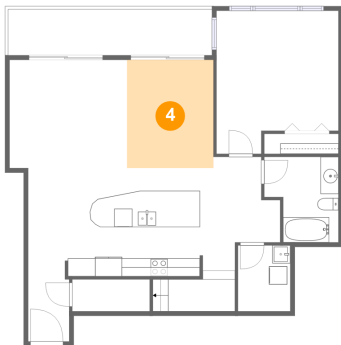
3 Floor 1 - Kitchen



Dimensions: 28'0" x 12'7"
Area: 341 sq. ft
Counted as living area: Yes

Heated: Yes
Finished: Yes
Enclosed: Yes
Contiguous: Yes
Permitted: Yes
Wet space: No
Addition: No
Conversion: No

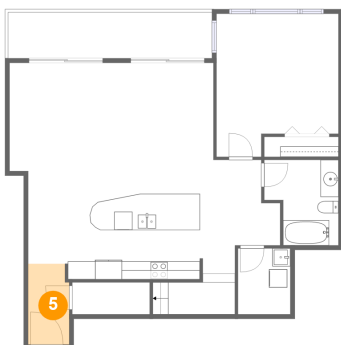
4 Floor 1 - Dining Room



Dimensions: 9'7" x 12'0"
Area: 115 sq. ft
Counted as living area: Yes

Heated: Yes
Finished: Yes
Enclosed: Yes
Contiguous: Yes
Permitted: Yes
Wet space: No
Addition: No
Conversion: No

5 Floor 1 - Entry

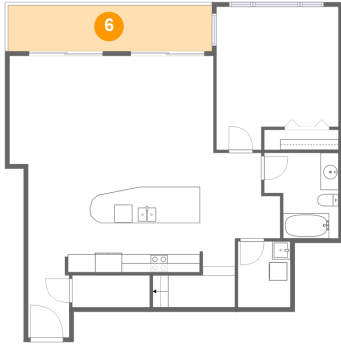


Dimensions: 4'7" x 8'11"
Area: 40 sq. ft
Counted as living area: Yes

Heated: Yes
Finished: Yes
Enclosed: Yes
Contiguous: Yes
Permitted: Yes
Wet space: No
Addition: No
Conversion: No

470 Mandalay Avenue, Clearwater Beach, Pinellas County, Florida, United States, 33767, 306

6 Floor 1 - Outdoor



Dimensions: 22'7" x 5'1"
Area: 116 sq. ft
Counted as living area: No

Heated: No
Finished: Yes
Enclosed: No
Contiguous: Yes
Permitted: Yes
Wet space: No
Addition: No
Conversion: No

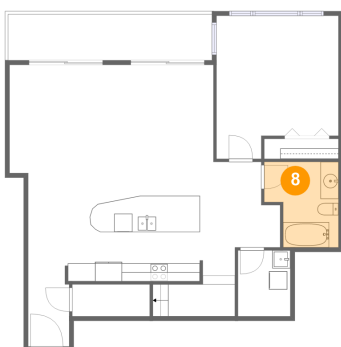
7 Floor 1 - Living Room



Dimensions: 13'0" x 12'0"
Area: 157 sq. ft
Counted as living area: Yes

Heated: Yes
Finished: Yes
Enclosed: Yes
Contiguous: Yes
Permitted: Yes
Wet space: No
Addition: No
Conversion: No

8 Floor 1 - Bath

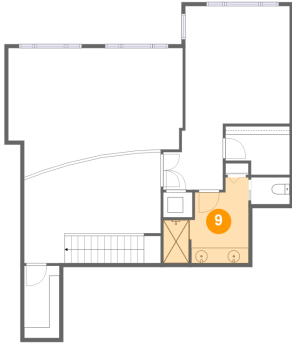


Dimensions: 8'3" x 9'6"
Area: 68 sq. ft
Counted as living area: Yes

Heated: Yes
Finished: Yes
Enclosed: Yes
Contiguous: Yes
Permitted: Yes
Wet space: Yes
Addition: No
Conversion: No

470 Mandalay Avenue, Clearwater Beach, Pinellas County, Florida, United States, 33767, 306

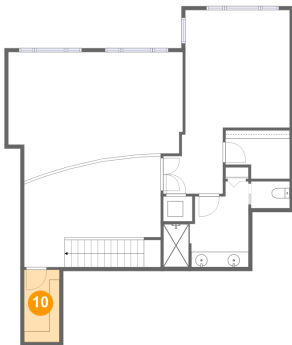
9 Floor 2 - Bath



Dimensions: 11'1" x 11'1"
Area: 92 sq. ft
Counted as living area: Yes

Heated: Yes
Finished: Yes
Enclosed: Yes
Contiguous: Yes
Permitted: Yes
Wet space: Yes
Addition: No
Conversion: No

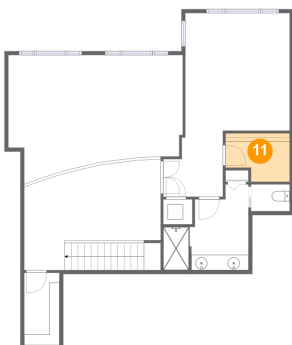
10 Floor 2 - Room



Dimensions: 4'7" x 9'5"
Area: 43 sq. ft
Counted as living area: Yes

Heated: Yes
Finished: Yes
Enclosed: Yes
Contiguous: Yes
Permitted: Yes
Wet space: No
Addition: No
Conversion: No

11 Floor 2 - Cl

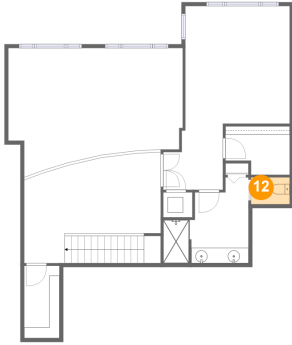


Dimensions: 8'4" x 6'4"
Area: 46 sq. ft
Counted as living area: Yes

Heated: Yes
Finished: Yes
Enclosed: Yes
Contiguous: Yes
Permitted: Yes
Wet space: No
Addition: No
Conversion: No

**470 Mandalay Avenue, Clearwater Beach, Pinellas
County, Florida, United States, 33767, 306**

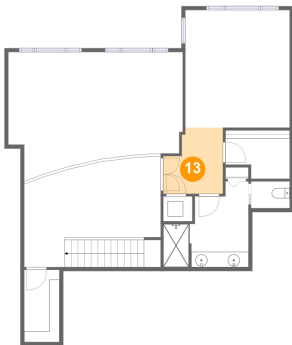
12 Floor 2 - Bath



Dimensions: 5'0" x 3'6"
Area: 17 sq. ft
Counted as living area: Yes

Heated: Yes
Finished: Yes
Enclosed: Yes
Contiguous: Yes
Permitted: Yes
Wet space: No
Addition: No
Conversion: No

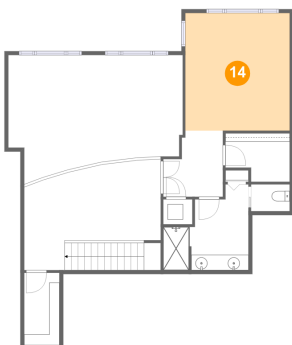
13 Floor 2 - Hall



Dimensions: 7'9" x 8'6"
Area: 57 sq. ft
Counted as living area: Yes

Heated: Yes
Finished: Yes
Enclosed: Yes
Contiguous: Yes
Permitted: Yes
Wet space: No
Addition: No
Conversion: No

14 Floor 2 - Bedroom

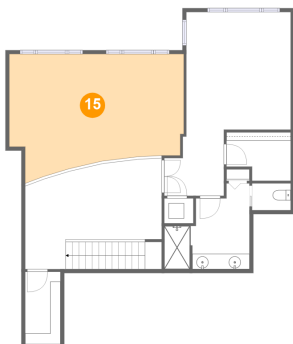


Dimensions: 13'7" x 15'3"
Area: 207 sq. ft
Counted as living area: Yes

Heated: Yes
Finished: Yes
Enclosed: Yes
Contiguous: Yes
Permitted: Yes
Wet space: No
Addition: No
Conversion: No

470 Mandalay Avenue, Clearwater Beach, Pinellas County, Florida, United States, 33767, 306

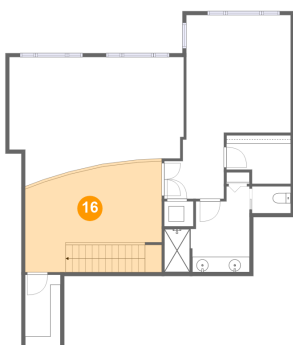
15 Floor 2 - Open To Below



Dimensions: 22'8" x 16'4"
Area: 316 sq. ft
Counted as living area: No

Heated: No
Finished: No
Enclosed: No
Contiguous: Yes
Permitted: No
Wet space: No
Addition: No
Conversion: No

16 Floor 2 - Hall



Dimensions: 17'9" x 12'4"
Area: 238 sq. ft
Counted as living area: Yes

Heated: Yes
Finished: Yes
Enclosed: Yes
Contiguous: Yes
Permitted: Yes
Wet space: No
Addition: No
Conversion: No