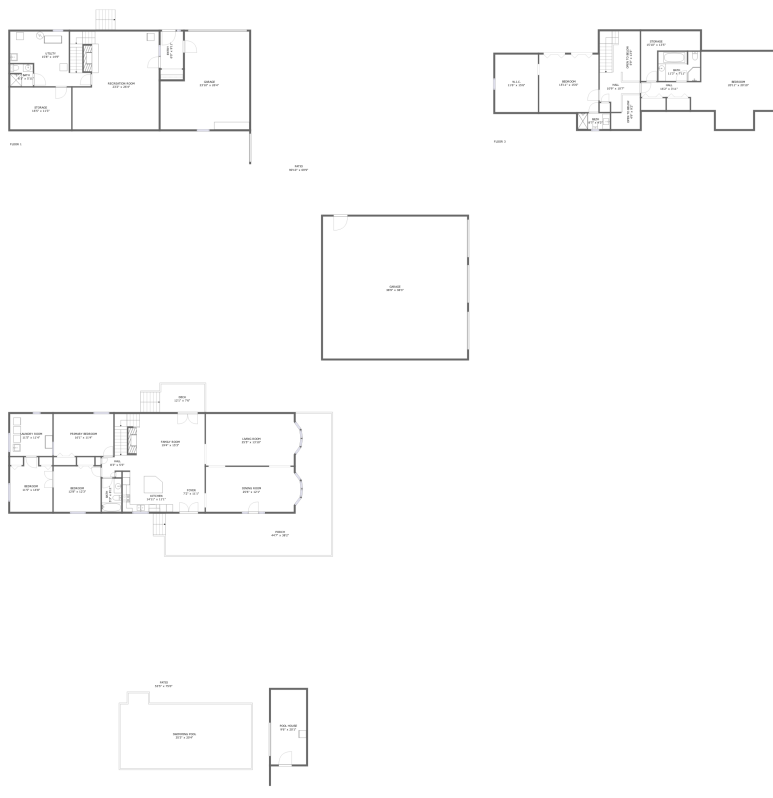


Home Data Report

**419 Monroe Road, Buffalo Township, Sarver,
Butler County, Pennsylvania, United States,**



Property Summary

 **2** garages

 **5** bedrooms

 **4** bathrooms

 **0** half baths

 **3** floors

 **4,050**
Gross Living
Area sqft

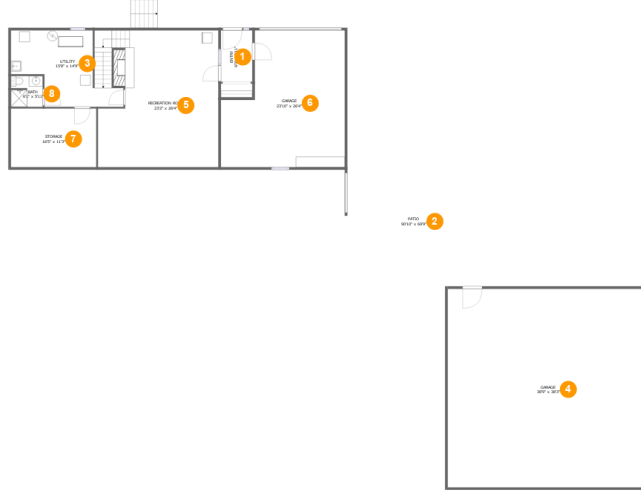
 **13,064**
total sqft

Scan captured on Sat, 29 Jun 2024 12:46:59 GMT

Information is calculated by CubiCasa technology; deemed highly reliable but not guaranteed.

Home Data Report

419 Monroe Road, Buffalo Township, Sarver, Butler County, Pennsylvania, United States,



Room Dimensions

Floor 1

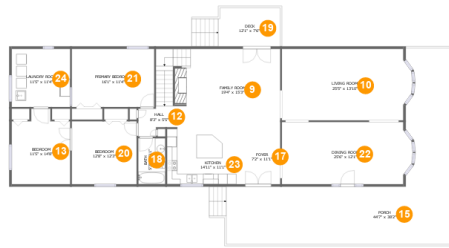
Total sqft: 6537

Living area: 1011

#	Room name	Dimensions	Area (sqft)	Counted as Living Area
1	Entry	6'0" x 9'11"	60 sq. ft	Yes
2	Patio	90'10" x 69'9"	3192 sq. ft	No
3	Utility	15'8" x 14'9"	193 sq. ft	Yes
4	Garage	38'9" x 38'3"	1482 sq. ft	No
5	Recreation Room	23'2" x 26'4"	613 sq. ft	Yes
6	Garage	23'10" x 26'4"	540 sq. ft	No
7	Storage	16'5" x 11'3"	185 sq. ft	No
8	Bath	6'1" x 5'11"	35 sq. ft	Yes

Home Data Report

**419 Monroe Road, Buffalo Township, Sarver,
Butler County, Pennsylvania, United States,**



Room Dimensions

Floor 2

Total sqft: 4942

Living area: 2136

#	Room name	Dimensions	Area (sqft)	Counted as Living Area
9	Family Room	19'4" x 15'3"	321 sq. ft	Yes
10	Living Room	25'5" x 13'10"	340 sq. ft	Yes
11	Pool House	9'6" x 20'1"	190 sq. ft	No
12	Hall	8'3" x 5'5"	63 sq. ft	Yes
13	Bedroom	11'5" x 14'8"	148 sq. ft	Yes
14	Swimming Pool	35'3" x 20'4"	627 sq. ft	No
15	Porch	44'7" x 38'2"	736 sq. ft	No
16	Patio	53'5" x 75'0"	2389 sq. ft	No
17	Foyer	7'2" x 11'1"	80 sq. ft	Yes
18	Bath	5'3" x 8'11"	47 sq. ft	Yes
19	Deck	12'1" x 7'6"	90 sq. ft	No

Scan captured on Sat, 29 Jun 2024 12:46:59 GMT

Information is calculated by CubiCasa technology; deemed highly reliable but not guaranteed.

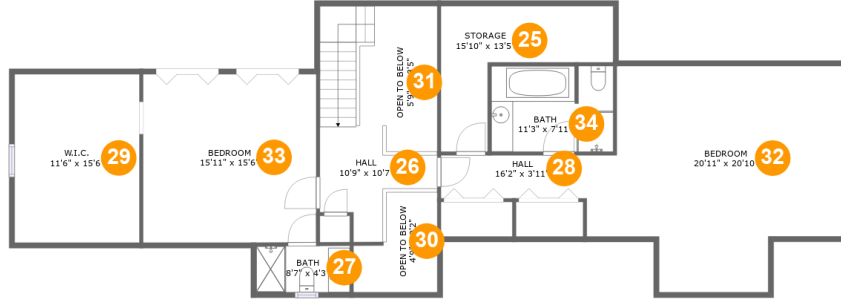
Home Data Report

**419 Monroe Road, Buffalo Township, Sarver,
Butler County, Pennsylvania, United States,**

#	Room name	Dimensions	Area (sqft)	Counted as Living Area
20	Bedroom	12'8" x 12'3"	154 sq. ft	Yes
21	Primary Bedroom	16'1" x 11'4"	182 sq. ft	Yes
22	Dining Room	25'6" x 12'1"	297 sq. ft	Yes
23	Kitchen	14'11" x 11'1"	165 sq. ft	Yes
24	Laundry Room	11'5" x 11'4"	129 sq. ft	Yes

Home Data Report

**419 Monroe Road, Buffalo Township, Sarver,
Butler County, Pennsylvania, United States,**



Room Dimensions

Floor 3

Total sqft: 1585

Living area: 903

#	Room name	Dimensions	Area (sqft)	Counted as Living Area
25	Storage	15'10" x 13'5"	84 sq. ft	No
26	Hall	10'9" x 10'7"	151 sq. ft	Yes
27	Bath	8'7" x 4'3"	37 sq. ft	Yes
28	Hall	16'2" x 3'11"	64 sq. ft	Yes
29	W.i.c.	11'6" x 15'6"	86 sq. ft	Yes
30	Open To Below	4'9" x 9'2"	44 sq. ft	No
31	Open To Below	5'9" x 13'5"	67 sq. ft	No
32	Bedroom	20'11" x 20'10"	273 sq. ft	Yes
33	Bedroom	15'11" x 15'6"	121 sq. ft	Yes
34	Bath	11'3" x 7'11"	52 sq. ft	Yes

Scan captured on Sat, 29 Jun 2024 12:46:59 GMT

Information is calculated by CubiCasa technology; deemed highly reliable but not guaranteed.

**419 Monroe Road, Buffalo Township, Sarver,
Butler County, Pennsylvania, United States,**

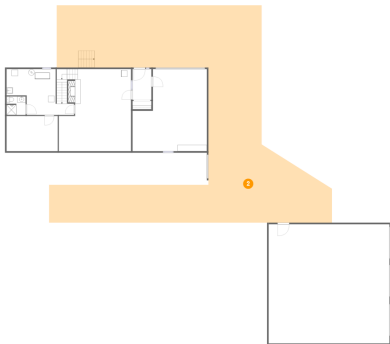
1 Floor 1 - Entry



Dimensions: 6'0" x 9'11"
Area: 60 sq. ft
Counted as Living Area:
Yes

Heated: Yes
Finished: Yes
Enclosed: Yes
Contiguous:
Yes
Permitted: Yes
Wet Space: No
Addition: No
Conversion: No

2 Floor 1 - Patio



Dimensions: 90'10" x 69'9"
Area: 3192 sq. ft
Counted as Living Area: No

Heated: No
Finished: No
Enclosed: No
Contiguous: Yes
Permitted: Yes
Wet Space: No
Addition: No
Conversion: No

**419 Monroe Road, Buffalo Township, Sarver,
Butler County, Pennsylvania, United States,**

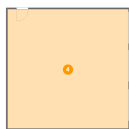
3 Floor 1 - Utility



Dimensions: 15'8" x 14'9"
Area: 193 sq. ft
Counted as Living Area:
Yes

Heated: Yes
Finished: Yes
Enclosed: Yes
Contiguous:
Yes
Permitted: Yes
Wet Space: No
Addition: No
Conversion: No

4 Floor 1 - Garage



Dimensions: 38'9" x 38'3"
Area: 1482 sq. ft
Counted as Living Area: No

Heated: No
Finished: No
Enclosed: Yes
Contiguous: Yes
Permitted: Yes
Wet Space: No
Addition: No
Conversion: No

5 Floor 1 - Recreation Room

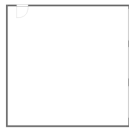


Dimensions: 23'2" x 26'4"
Area: 613 sq. ft
Counted as Living Area:
Yes

Heated: Yes
Finished: Yes
Enclosed: Yes
Contiguous:
Yes
Permitted: Yes
Wet Space: No
Addition: No
Conversion: No

**419 Monroe Road, Buffalo Township, Sarver,
Butler County, Pennsylvania, United States,**

6 Floor 1 - Garage



Dimensions: 23'10" x 26'4"
Area: 540 sq. ft
Counted as Living Area: No

Heated: No
Finished: No
Enclosed: Yes
Contiguous: Yes
Permitted: Yes
Wet Space: No
Addition: No
Conversion: No

7 Floor 1 - Storage



Dimensions: 16'5" x 11'3"
Area: 185 sq. ft
Counted as Living Area: No

Heated: No
Finished: No
Enclosed: No
Contiguous: Yes
Permitted: Yes
Wet Space: No
Addition: No
Conversion: No

8 Floor 1 - Bath



Dimensions: 6'1" x 5'11"
Area: 35 sq. ft
Counted as Living Area:
Yes

Heated: Yes
Finished: Yes
Enclosed: Yes
Contiguous:
Yes
Permitted: Yes
Wet Space: Yes
Addition: No
Conversion: No

**419 Monroe Road, Buffalo Township, Sarver,
Butler County, Pennsylvania, United States,**

9 Floor 2 - Family Room



Dimensions: 19'4" x 15'3"
Area: 321 sq. ft
Counted as Living Area:
Yes

Heated: Yes
Finished: Yes
Enclosed: Yes
Contiguous:
Yes
Permitted: Yes
Wet Space: No
Addition: No
Conversion: No

10 Floor 2 - Living Room



Dimensions: 25'5" x 13'10"
Area: 340 sq. ft
Counted as Living Area:
Yes

Heated: Yes
Finished: Yes
Enclosed: Yes
Contiguous:
Yes
Permitted: Yes
Wet Space: No
Addition: No
Conversion: No

11 Floor 2 - Pool House



Dimensions: 9'6" x 20'1"
Area: 190 sq. ft
Counted as Living Area: No

Heated: No
Finished: No
Enclosed: No
Contiguous: Yes
Permitted: Yes
Wet Space: No
Addition: No
Conversion: No

**419 Monroe Road, Buffalo Township, Sarver,
Butler County, Pennsylvania, United States,**

12 Floor 2 - Hall



Dimensions: 8'3" x 5'5"
Area: 63 sq. ft
Counted as Living Area:
Yes

Heated: Yes
Finished: Yes
Enclosed: Yes
Contiguous:
Yes
Permitted: Yes
Wet Space: No
Addition: No
Conversion: No

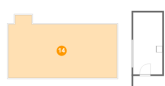
13 Floor 2 - Bedroom



Dimensions: 11'5" x 14'8"
Area: 148 sq. ft
Counted as Living Area:
Yes

Heated: Yes
Finished: Yes
Enclosed: Yes
Contiguous:
Yes
Permitted: Yes
Wet Space: No
Addition: No
Conversion: No

14 Floor 2 - Swimming Pool

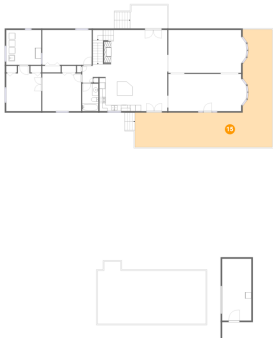


Dimensions: 35'3" x 20'4"
Area: 627 sq. ft
Counted as Living Area: No

Heated: No
Finished: No
Enclosed: No
Contiguous: Yes
Permitted: No
Wet Space: No
Addition: No
Conversion: No

**419 Monroe Road, Buffalo Township, Sarver,
Butler County, Pennsylvania, United States,**

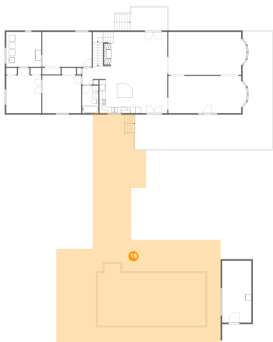
15 Floor 2 - Porch



Dimensions: 44'7" x 38'2"
Area: 736 sq. ft
Counted as Living Area: No

Heated: No
Finished: Yes
Enclosed: No
Contiguous: Yes
Permitted: Yes
Wet Space: No
Addition: No
Conversion: No

16 Floor 2 - Patio



Dimensions: 53'5" x 75'0"
Area: 2389 sq. ft
Counted as Living Area: No

Heated: No
Finished: Yes
Enclosed: No
Contiguous: Yes
Permitted: Yes
Wet Space: No
Addition: No
Conversion: No

17 Floor 2 - Foyer



Dimensions: 7'2" x 11'1"
Area: 80 sq. ft
Counted as Living Area: Yes

Heated: Yes
Finished: Yes
Enclosed: Yes
Contiguous: Yes
Permitted: Yes
Wet Space: No
Addition: No
Conversion: No

**419 Monroe Road, Buffalo Township, Sarver,
Butler County, Pennsylvania, United States,**

18 Floor 2 - Bath



Dimensions: 5'3" x 8'11"
Area: 47 sq. ft
Counted as Living Area:
Yes

Heated: Yes
Finished: Yes
Enclosed: Yes
Contiguous:
Yes
Permitted: Yes
Wet Space: Yes
Addition: No
Conversion: No

19 Floor 2 - Deck



Dimensions: 12'1" x 7'6"
Area: 90 sq. ft
Counted as Living Area: No

Heated: No
Finished: Yes
Enclosed: No
Contiguous: Yes
Permitted: Yes
Wet Space: No
Addition: No
Conversion: No

20 Floor 2 - Bedroom



Dimensions: 12'8" x 12'3"
Area: 154 sq. ft
Counted as Living Area:
Yes

Heated: Yes
Finished: Yes
Enclosed: Yes
Contiguous:
Yes
Permitted: Yes
Wet Space: No
Addition: No
Conversion: No

**419 Monroe Road, Buffalo Township, Sarver,
Butler County, Pennsylvania, United States,**

21 Floor 2 - Primary Bedroom



Dimensions: 16'1" x 11'4"
Area: 182 sq. ft
Counted as Living Area:
Yes

Heated: Yes
Finished: Yes
Enclosed: Yes
Contiguous:
Yes
Permitted: Yes
Wet Space: No
Addition: No
Conversion: No

22 Floor 2 - Dining Room



Dimensions: 25'6" x 12'1"
Area: 297 sq. ft
Counted as Living Area:
Yes

Heated: Yes
Finished: Yes
Enclosed: Yes
Contiguous:
Yes
Permitted: Yes
Wet Space: No
Addition: No
Conversion: No

23 Floor 2 - Kitchen



Dimensions: 14'11" x 11'1"
Area: 165 sq. ft
Counted as Living Area:
Yes

Heated: Yes
Finished: Yes
Enclosed: Yes
Contiguous:
Yes
Permitted: Yes
Wet Space: No
Addition: No
Conversion: No

**419 Monroe Road, Buffalo Township, Sarver,
Butler County, Pennsylvania, United States,**

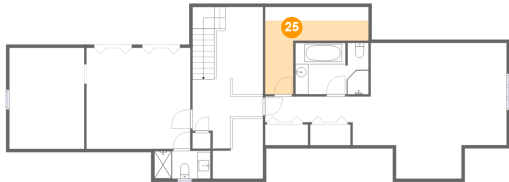
24 Floor 2 - Laundry Room



Dimensions: 11'5" x 11'4"
Area: 129 sq. ft
Counted as Living Area:
Yes

Heated: Yes
Finished: Yes
Enclosed: Yes
Contiguous:
Yes
Permitted: Yes
Wet Space: No
Addition: No
Conversion: No

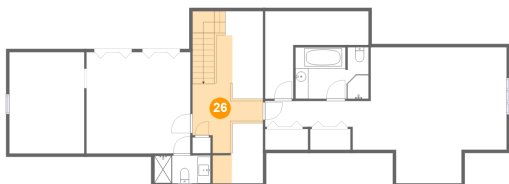
25 Floor 3 - Storage



Dimensions: 15'10" x 13'5"
Area: 84 sq. ft
Counted as Living Area: No

Heated: No
Finished: No
Enclosed: No
Contiguous: Yes
Permitted: Yes
Wet Space: No
Addition: No
Conversion: No

26 Floor 3 - Hall

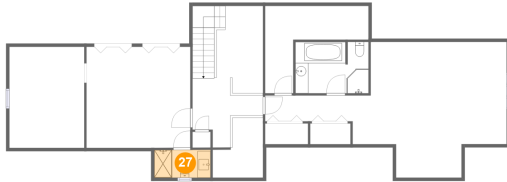


Dimensions: 10'9" x 10'7"
Area: 151 sq. ft
Counted as Living Area:
Yes

Heated: Yes
Finished: Yes
Enclosed: Yes
Contiguous:
Yes
Permitted: Yes
Wet Space: No
Addition: No
Conversion: No

**419 Monroe Road, Buffalo Township, Sarver,
Butler County, Pennsylvania, United States,**

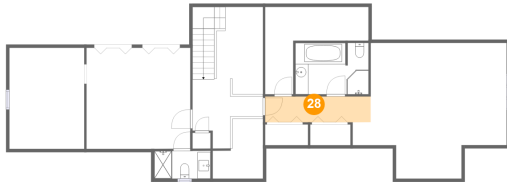
27 Floor 3 - Bath



Dimensions: 8'7" x 4'3"
Area: 37 sq. ft
Counted as Living Area:
Yes

Heated: Yes
Finished: Yes
Enclosed: Yes
Contiguous:
Yes
Permitted: Yes
Wet Space: Yes
Addition: No
Conversion: No

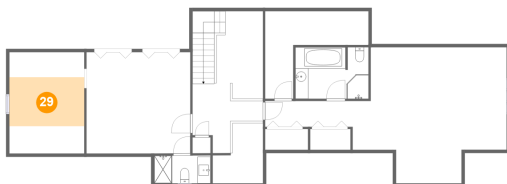
28 Floor 3 - Hall



Dimensions: 16'2" x 3'11"
Area: 64 sq. ft
Counted as Living Area:
Yes

Heated: Yes
Finished: Yes
Enclosed: Yes
Contiguous:
Yes
Permitted: Yes
Wet Space: No
Addition: No
Conversion: No

29 Floor 3 - W.i.c.

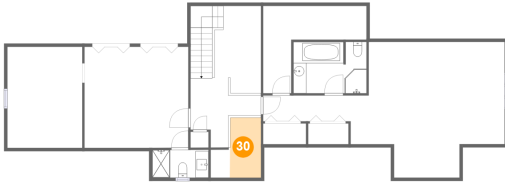


Dimensions: 11'6" x 15'6"
Area: 86 sq. ft
Counted as Living Area:
Yes

Heated: Yes
Finished: Yes
Enclosed: Yes
Contiguous:
Yes
Permitted: Yes
Wet Space: No
Addition: No
Conversion: No

**419 Monroe Road, Buffalo Township, Sarver,
Butler County, Pennsylvania, United States,**

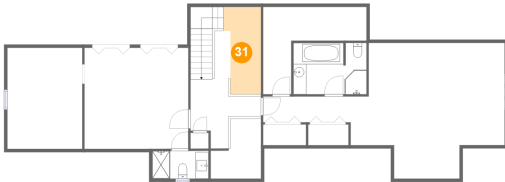
30 Floor 3 - Open To Below



Dimensions: 4'9" x 9'2"
Area: 44 sq. ft
Counted as Living Area: No

Heated: No
Finished: No
Enclosed: No
Contiguous: Yes
Permitted: No
Wet Space: No
Addition: No
Conversion: No

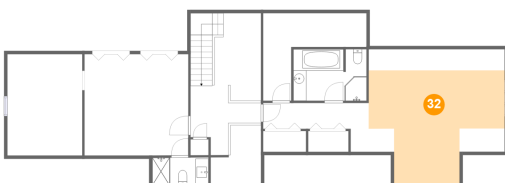
31 Floor 3 - Open To Below



Dimensions: 5'9" x 13'5"
Area: 67 sq. ft
Counted as Living Area: No

Heated: No
Finished: No
Enclosed: No
Contiguous: Yes
Permitted: No
Wet Space: No
Addition: No
Conversion: No

32 Floor 3 - Bedroom

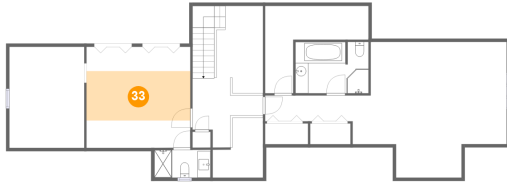


Dimensions: 20'11" x 20'10"
Area: 273 sq. ft
Counted as Living Area:
Yes

Heated: Yes
Finished: Yes
Enclosed: Yes
Contiguous:
Yes
Permitted: Yes
Wet Space: No
Addition: No
Conversion: No

**419 Monroe Road, Buffalo Township, Sarver,
Butler County, Pennsylvania, United States,**

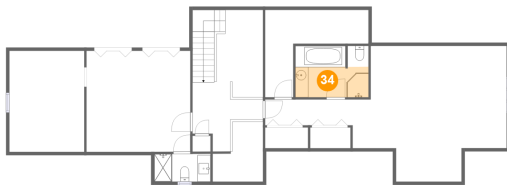
33 Floor 3 - Bedroom



Dimensions: 15'11" x 15'6"
Area: 121 sq. ft
Counted as Living Area:
Yes

Heated: Yes
Finished: Yes
Enclosed: Yes
Contiguous:
Yes
Permitted: Yes
Wet Space: No
Addition: No
Conversion: No

34 Floor 3 - Bath



Dimensions: 11'3" x 7'11"
Area: 52 sq. ft
Counted as Living Area:
Yes

Heated: Yes
Finished: Yes
Enclosed: Yes
Contiguous:
Yes
Permitted: Yes
Wet Space: Yes
Addition: No
Conversion: No