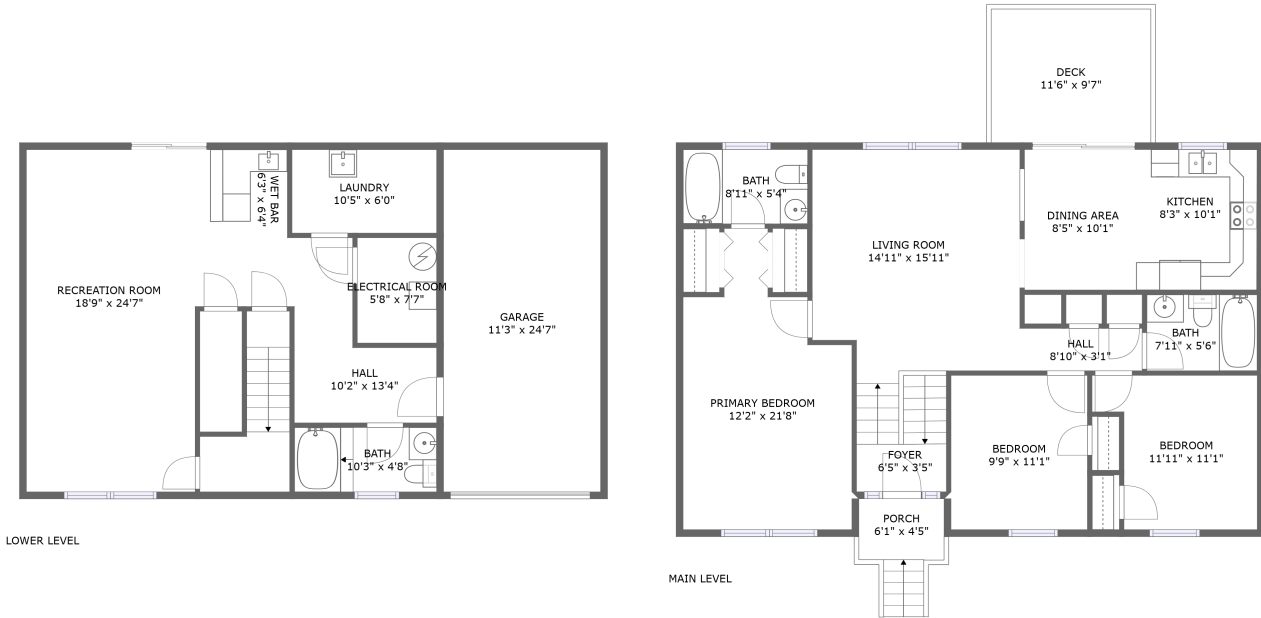



260 Harbor Landing Drive, North Shore, Moneta, Franklin County, Virginia, United States, 24121



Property summary

 **1** Garages

 **3** Bedrooms

 **3** Bathrooms

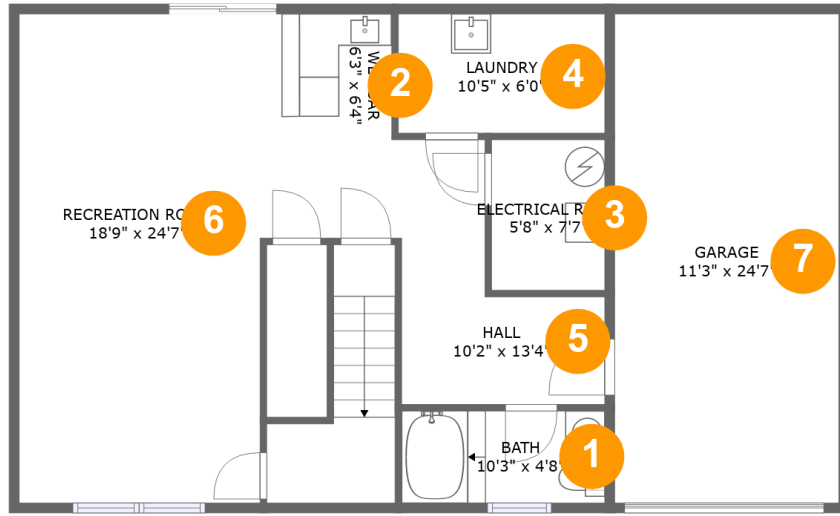
 **0** Half baths

 **2** Floors

 **1,915** Gross living area sqft

 **2,413** Total sqft

**260 Harbor Landing Drive, North Shore, Moneta,
Franklin County, Virginia, United States, 24121**



Room dimensions

Floor 1

Total sqft: 1083

Living area: 734

#		Dimensions	sqft	Counted as living area
1	Bath	10'3" x 4'8"	47 sq. ft	Yes
2	Bar	6'3" x 6'4"	40 sq. ft	Yes
3	Room	5'8" x 7'7"	43 sq. ft	No
4	Utility	10'5" x 6'0"	62 sq. ft	Yes
5	Hall	10'2" x 13'4"	91 sq. ft	Yes
6	Recreation Room	18'9" x 24'7"	334 sq. ft	Yes
7	Garage	11'3" x 24'7"	278 sq. ft	No

260 Harbor Landing Drive, North Shore, Moneta, Franklin County, Virginia, United States, 24121



Room dimensions

Floor 2

Total sqft: 1330 Living area: 1181

#		Dimensions	sqft	Counted as living area
8	Bedroom	11'11" x 11'1"	112 sq. ft	Yes
9	Bedroom	9'9" x 11'1"	109 sq. ft	Yes
10	Bath	7'11" x 5'6"	43 sq. ft	Yes
11	Entry	6'5" x 3'5"	56 sq. ft	Yes
12	Bedroom	12'2" x 21'8"	208 sq. ft	Yes
13	Outdoor	6'1" x 4'5"	39 sq. ft	No
14	Dining Room	8'5" x 10'1"	85 sq. ft	Yes
15	Kitchen	8'3" x 10'1"	84 sq. ft	Yes
16	Hall	8'10" x 3'1"	27 sq. ft	Yes
17	Living Room	14'11" x 15'11"	232 sq. ft	Yes
18	Outdoor	11'6" x 9'7"	110 sq. ft	No

Scan captured on Mon, 18 Nov 2024 21:11:20 GMT

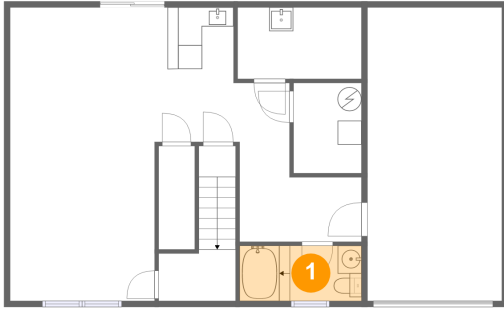
Information is calculated by Cubicasa technology deemed highly reliable but not guaranteed.

**260 Harbor Landing Drive, North Shore, Moneta,
Franklin County, Virginia, United States, 24121**

#		Dimensions	sqft	Counted as living area
19	Bath	8'11" x 5'4"	48 sq. ft	Yes

260 Harbor Landing Drive, North Shore, Moneta, Franklin County, Virginia, United States, 24121

1 Floor 1 - Bath



Dimensions: 10'3" x 4'8"
Area: 47 sq. ft
Counted as living area: Yes

Heated: Yes
Finished: Yes
Enclosed: Yes
Contiguous: Yes
Permitted: Yes
Wet space: Yes
Addition: No
Conversion: No

2 Floor 1 - Bar

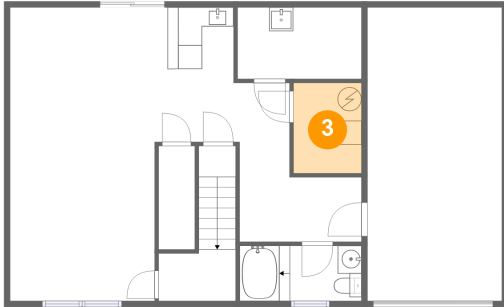


Dimensions: 6'3" x 6'4"
Area: 40 sq. ft
Counted as living area: Yes

Heated: Yes
Finished: Yes
Enclosed: Yes
Contiguous: Yes
Permitted: Yes
Wet space: No
Addition: No
Conversion: No

260 Harbor Landing Drive, North Shore, Moneta, Franklin County, Virginia, United States, 24121

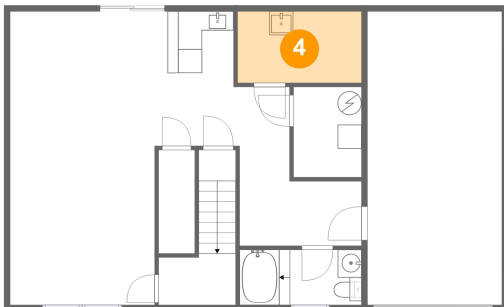
3 Floor 1 - Room



Dimensions: 5'8" x 7'7"
Area: 43 sq. ft
Counted as living area: No

Heated: No
Finished: No
Enclosed: Yes
Contiguous: Yes
Permitted: Yes
Wet space: No
Addition: No
Conversion: No

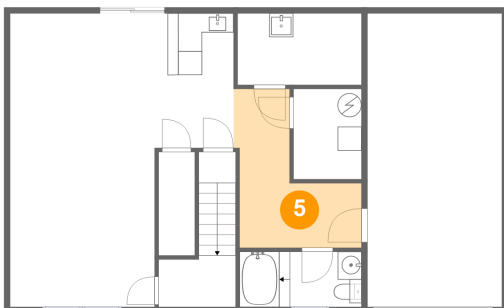
4 Floor 1 - Utility



Dimensions: 10'5" x 6'0"
Area: 62 sq. ft
Counted as living area: Yes

Heated: Yes
Finished: Yes
Enclosed: Yes
Contiguous: Yes
Permitted: Yes
Wet space: No
Addition: No
Conversion: No

5 Floor 1 - Hall

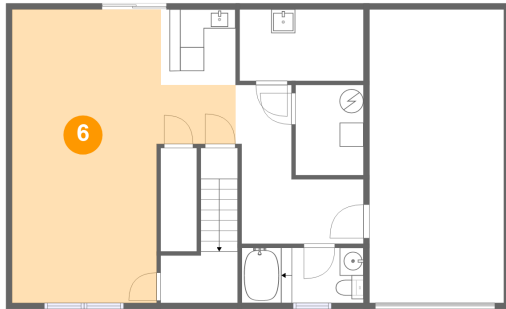


Dimensions: 10'2" x 13'4"
Area: 91 sq. ft
Counted as living area: Yes

Heated: Yes
Finished: Yes
Enclosed: Yes
Contiguous: Yes
Permitted: Yes
Wet space: No
Addition: No
Conversion: No

260 Harbor Landing Drive, North Shore, Moneta,
Franklin County, Virginia, United States, 24121

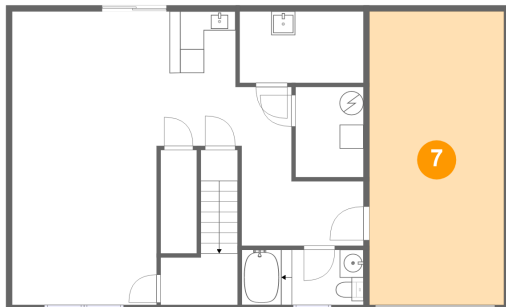
6 Floor 1 - Recreation Room



Dimensions: 18'9" x 24'7"
Area: 334 sq. ft
Counted as living area: Yes

Heated: Yes
Finished: Yes
Enclosed: Yes
Contiguous: Yes
Permitted: Yes
Wet space: No
Addition: No
Conversion: No

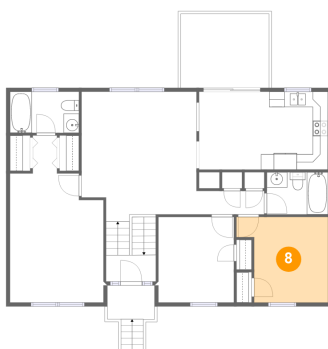
7 Floor 1 - Garage



Dimensions: 11'3" x 24'7"
Area: 278 sq. ft
Counted as living area: No

Heated: No
Finished: No
Enclosed: Yes
Contiguous: Yes
Permitted: Yes
Wet space: No
Addition: No
Conversion: No

8 Floor 2 - Bedroom



Dimensions: 11'11" x 11'1"
Area: 112 sq. ft
Counted as living area: Yes

Heated: Yes
Finished: Yes
Enclosed: Yes
Contiguous: Yes
Permitted: Yes
Wet space: No
Addition: No
Conversion: No

260 Harbor Landing Drive, North Shore, Moneta, Franklin County, Virginia, United States, 24121

9 Floor 2 - Bedroom



Dimensions: 9'9" x 11'1"
Area: 109 sq. ft
Counted as living area: Yes

Heated: Yes
Finished: Yes
Enclosed: Yes
Contiguous: Yes
Permitted: Yes
Wet space: No
Addition: No
Conversion: No

10 Floor 2 - Bath



Dimensions: 7'11" x 5'6"
Area: 43 sq. ft
Counted as living area: Yes

Heated: Yes
Finished: Yes
Enclosed: Yes
Contiguous: Yes
Permitted: Yes
Wet space: Yes
Addition: No
Conversion: No

11 Floor 2 - Entry

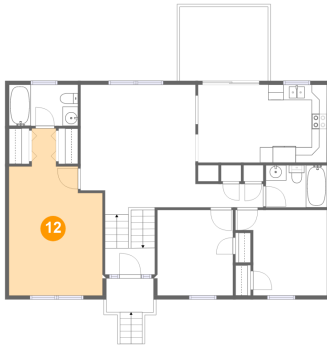


Dimensions: 6'5" x 3'5"
Area: 56 sq. ft
Counted as living area: Yes

Heated: Yes
Finished: Yes
Enclosed: Yes
Contiguous: Yes
Permitted: Yes
Wet space: No
Addition: No
Conversion: No

260 Harbor Landing Drive, North Shore, Moneta, Franklin County, Virginia, United States, 24121

12 Floor 2 - Bedroom



Dimensions: 12'2" x 21'8"
Area: 208 sq. ft
Counted as living area: Yes

Heated: Yes
Finished: Yes
Enclosed: Yes
Contiguous: Yes
Permitted: Yes
Wet space: No
Addition: No
Conversion: No

13 Floor 2 - Outdoor



Dimensions: 6'1" x 4'5"
Area: 39 sq. ft
Counted as living area: No

Heated: No
Finished: Yes
Enclosed: No
Contiguous: Yes
Permitted: Yes
Wet space: No
Addition: No
Conversion: No

14 Floor 2 - Dining Room



Dimensions: 8'5" x 10'1"
Area: 85 sq. ft
Counted as living area: Yes

Heated: Yes
Finished: Yes
Enclosed: Yes
Contiguous: Yes
Permitted: Yes
Wet space: No
Addition: No
Conversion: No

260 Harbor Landing Drive, North Shore, Moneta, Franklin County, Virginia, United States, 24121

15 Floor 2 - Kitchen



Dimensions: 8'3" x 10'1"
Area: 84 sq. ft
Counted as living area: Yes

Heated: Yes
Finished: Yes
Enclosed: Yes
Contiguous: Yes
Permitted: Yes
Wet space: No
Addition: No
Conversion: No

16 Floor 2 - Hall



Dimensions: 8'10" x 3'1"
Area: 27 sq. ft
Counted as living area: Yes

Heated: Yes
Finished: Yes
Enclosed: Yes
Contiguous: Yes
Permitted: Yes
Wet space: No
Addition: No
Conversion: No

17 Floor 2 - Living Room



Dimensions: 14'11" x 15'11"
Area: 232 sq. ft
Counted as living area: Yes

Heated: Yes
Finished: Yes
Enclosed: Yes
Contiguous: Yes
Permitted: Yes
Wet space: No
Addition: No
Conversion: No

**260 Harbor Landing Drive, North Shore, Moneta,
Franklin County, Virginia, United States, 24121**

18 Floor 2 - Outdoor



Dimensions: 11'6" x 9'7"
Area: 110 sq. ft
Counted as living area: No

Heated: No
Finished: Yes
Enclosed: No
Contiguous: No
Permitted: Yes
Wet space: No
Addition: No
Conversion: No

19 Floor 2 - Bath



Dimensions: 8'11" x 5'4"
Area: 48 sq. ft
Counted as living area: Yes

Heated: Yes
Finished: Yes
Enclosed: Yes
Contiguous: Yes
Permitted: Yes
Wet space: Yes
Addition: No
Conversion: No