

Home Data Report

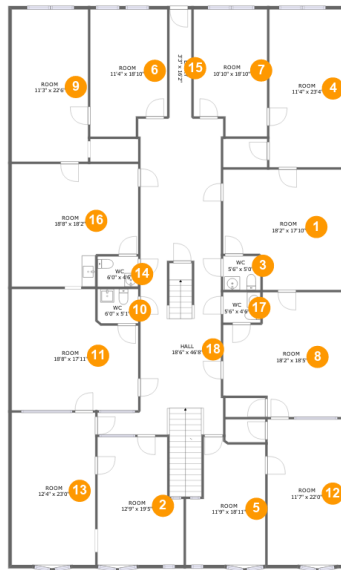
40 N Main St, St Albans City, VT, US



Property Summary

 **0** garages  **0** bedrooms  **0** bathrooms  **4** half baths

 **2** floors  **8,388** Gross Living Area sqft  **8,388** total sqft



Room Dimensions

Floor 1

Total sqft: 4197

Living area: 4197

#	Room name	Dimensions	Area (sqft)	Counted as Living Area
1	Room	18'2" x 17'10"	292 sq. ft	Yes
2	Room	12'9" x 19'5"	220 sq. ft	Yes
3	Wc	5'6" x 5'0"	28 sq. ft	Yes
4	Room	11'4" x 23'4"	265 sq. ft	Yes
5	Room	11'9" x 18'11"	193 sq. ft	Yes
6	Room	11'4" x 18'10"	200 sq. ft	Yes
7	Room	10'10" x 18'10"	190 sq. ft	Yes
8	Room	18'2" x 18'5"	286 sq. ft	Yes
9	Room	11'3" x 22'6"	254 sq. ft	Yes
10	Wc	6'0" x 5'1"	30 sq. ft	Yes
11	Room	18'8" x 17'11"	301 sq. ft	Yes

Home Data Report

40 N Main St, St Albans City, VT, US

#	Room name	Dimensions	Area (sqft)	Counted as Living Area
12	Room	11'7" x 22'0"	252 sq. ft	Yes
13	Room	12'4" x 23'0"	279 sq. ft	Yes
14	Wc	6'0" x 4'6"	27 sq. ft	Yes
15	Entry	3'3" x 16'2"	53 sq. ft	Yes
16	Room	18'8" x 18'2"	309 sq. ft	Yes
17	Wc	5'6" x 4'6"	25 sq. ft	Yes
18	Hall	18'6" x 46'8"	623 sq. ft	Yes

40 N Main St, St Albans City, VT, US



Room Dimensions

Floor 2

Total sqft: 4191

Living area: 4191

#	Room name	Dimensions	Area (sqft)	Counted as Living Area
19	Room	11'2" x 22'6"	252 sq. ft	Yes
20	Room	18'8" x 18'2"	309 sq. ft	Yes
21	Entry	3'7" x 19'0"	69 sq. ft	Yes
22	Room	11'5" x 18'6"	212 sq. ft	Yes
23	Room	18'7" x 17'8"	300 sq. ft	Yes
24	Room	11'3" x 22'6"	254 sq. ft	Yes
25	Hall	26'8" x 63'1"	620 sq. ft	Yes
26	Room	11'4" x 22'8"	257 sq. ft	Yes
27	Room	18'8" x 17'11"	308 sq. ft	Yes
28	Room	10'10" x 18'8"	202 sq. ft	Yes
29	Room	10'11" x 22'6"	245 sq. ft	Yes

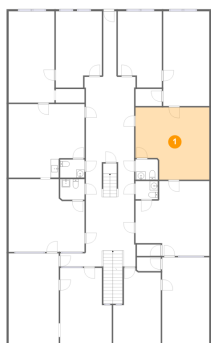
Home Data Report

40 N Main St, St Albans City, VT, US

#	Room name	Dimensions	Area (sqft)	Counted as Living Area
30	Room	11'0" x 18'8"	205 sq. ft	Yes
31	Room	11'7" x 18'6"	215 sq. ft	Yes
32	Room	18'7" x 18'2"	308 sq. ft	Yes

40 N Main St, St Albans City, VT, US

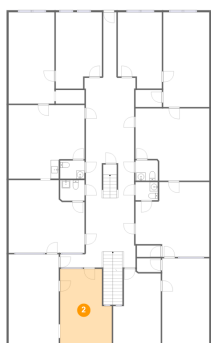
1 Floor 1 - Room



Dimensions: 18'2" x 17'10"
Area: 292 sq. ft
Counted as Living Area:
Yes

Heated: Yes
Finished: Yes
Enclosed: Yes
Contiguous:
Yes
Permitted: Yes
Wet Space: No
Addition: No
Conversion: No

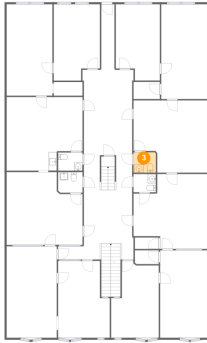
2 Floor 1 - Room



Dimensions: 12'9" x 19'5"
Area: 220 sq. ft
Counted as Living Area:
Yes

Heated: Yes
Finished: Yes
Enclosed: Yes
Contiguous:
Yes
Permitted: Yes
Wet Space: No
Addition: No
Conversion: No

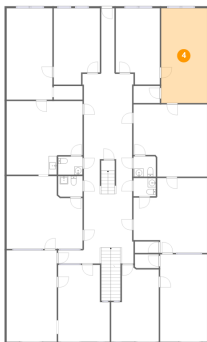
3 Floor 1 - Wc



Dimensions: 5'6" x 5'0"
Area: 28 sq. ft
Counted as Living Area:
Yes

Heated: Yes
Finished: Yes
Enclosed: Yes
Contiguous:
Yes
Permitted: Yes
Wet Space: Yes
Addition: No
Conversion: No

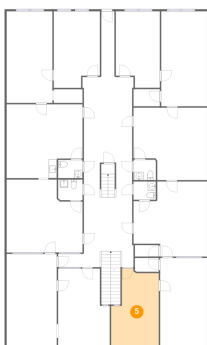
4 Floor 1 - Room



Dimensions: 11'4" x 23'4"
Area: 265 sq. ft
Counted as Living Area:
Yes

Heated: Yes
Finished: Yes
Enclosed: Yes
Contiguous:
Yes
Permitted: Yes
Wet Space: No
Addition: No
Conversion: No

5 Floor 1 - Room

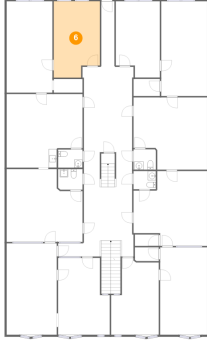


Dimensions: 11'9" x 18'11"
Area: 193 sq. ft
Counted as Living Area:
Yes

Heated: Yes
Finished: Yes
Enclosed: Yes
Contiguous:
Yes
Permitted: Yes
Wet Space: No
Addition: No
Conversion: No

40 N Main St, St Albans City, VT, US

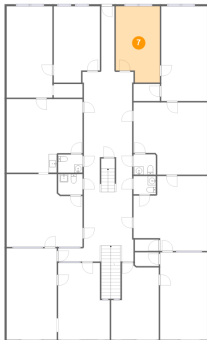
6 Floor 1 - Room



Dimensions: 11'4" x 18'10"
Area: 200 sq. ft
Counted as Living Area:
Yes

Heated: Yes
Finished: Yes
Enclosed: Yes
Contiguous:
Yes
Permitted: Yes
Wet Space: No
Addition: No
Conversion: No

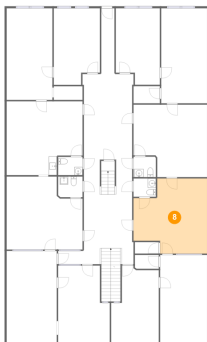
7 Floor 1 - Room



Dimensions: 10'10" x 18'10"
Area: 190 sq. ft
Counted as Living Area:
Yes

Heated: Yes
Finished: Yes
Enclosed: Yes
Contiguous:
Yes
Permitted: Yes
Wet Space: No
Addition: No
Conversion: No

8 Floor 1 - Room

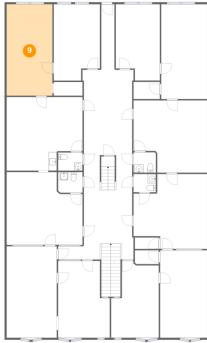


Dimensions: 18'2" x 18'5"
Area: 286 sq. ft
Counted as Living Area:
Yes

Heated: Yes
Finished: Yes
Enclosed: Yes
Contiguous:
Yes
Permitted: Yes
Wet Space: No
Addition: No
Conversion: No

40 N Main St, St Albans City, VT, US

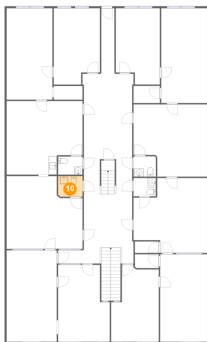
9 Floor 1 - Room



Dimensions: 11'3" x 22'6"
Area: 254 sq. ft
Counted as Living Area:
Yes

Heated: Yes
Finished: Yes
Enclosed: Yes
Contiguous:
Yes
Permitted: Yes
Wet Space: No
Addition: No
Conversion: No

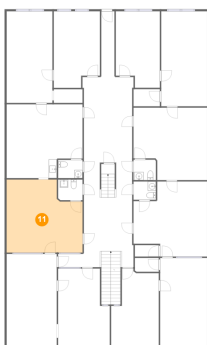
10 Floor 1 - Wc



Dimensions: 6'0" x 5'1"
Area: 30 sq. ft
Counted as Living Area:
Yes

Heated: Yes
Finished: Yes
Enclosed: Yes
Contiguous:
Yes
Permitted: Yes
Wet Space: Yes
Addition: No
Conversion: No

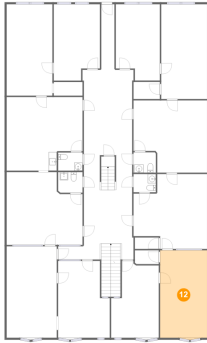
11 Floor 1 - Room



Dimensions: 18'8" x 17'11"
Area: 301 sq. ft
Counted as Living Area:
Yes

Heated: Yes
Finished: Yes
Enclosed: Yes
Contiguous:
Yes
Permitted: Yes
Wet Space: No
Addition: No
Conversion: No

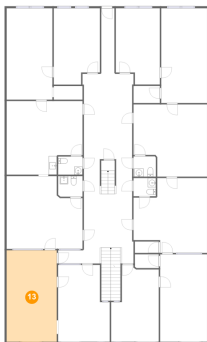
12 Floor 1 - Room



Dimensions: 11'7" x 22'0"
Area: 252 sq. ft
Counted as Living Area:
Yes

Heated: Yes
Finished: Yes
Enclosed: Yes
Contiguous:
Yes
Permitted: Yes
Wet Space: No
Addition: No
Conversion: No

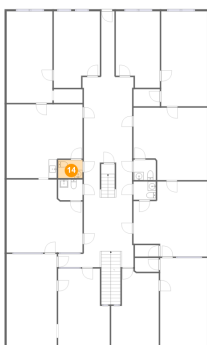
13 Floor 1 - Room



Dimensions: 12'4" x 23'0"
Area: 279 sq. ft
Counted as Living Area:
Yes

Heated: Yes
Finished: Yes
Enclosed: Yes
Contiguous:
Yes
Permitted: Yes
Wet Space: No
Addition: No
Conversion: No

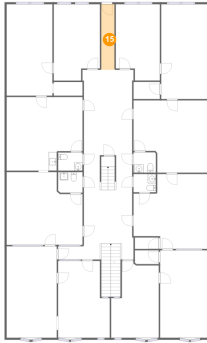
14 Floor 1 - Wc



Dimensions: 6'0" x 4'6"
Area: 27 sq. ft
Counted as Living Area:
Yes

Heated: Yes
Finished: Yes
Enclosed: Yes
Contiguous:
Yes
Permitted: Yes
Wet Space: Yes
Addition: No
Conversion: No

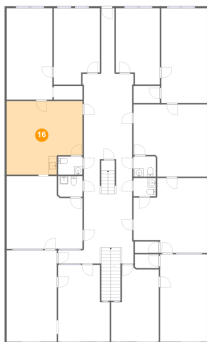
15 Floor 1 - Entry



Dimensions: 3'3" x 16'2"
Area: 53 sq. ft
Counted as Living Area:
Yes

Heated: Yes
Finished: Yes
Enclosed: Yes
Contiguous:
Yes
Permitted: Yes
Wet Space: No
Addition: No
Conversion: No

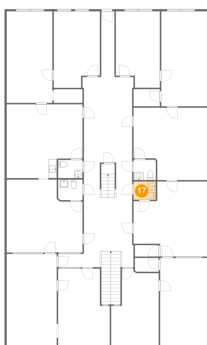
16 Floor 1 - Room



Dimensions: 18'8" x 18'2"
Area: 309 sq. ft
Counted as Living Area:
Yes

Heated: Yes
Finished: Yes
Enclosed: Yes
Contiguous:
Yes
Permitted: Yes
Wet Space: No
Addition: No
Conversion: No

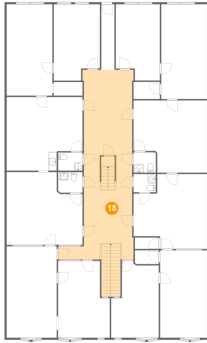
17 Floor 1 - Wc



Dimensions: 5'6" x 4'6"
Area: 25 sq. ft
Counted as Living Area:
Yes

Heated: Yes
Finished: Yes
Enclosed: Yes
Contiguous:
Yes
Permitted: Yes
Wet Space: Yes
Addition: No
Conversion: No

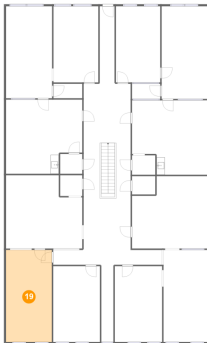
18 Floor 1 - Hall



Dimensions: 18'6" x 46'8"
Area: 623 sq. ft
Counted as Living Area:
Yes

Heated: Yes
Finished: Yes
Enclosed: Yes
Contiguous:
Yes
Permitted: Yes
Wet Space: No
Addition: No
Conversion: No

19 Floor 2 - Room



Dimensions: 11'2" x 22'6"
Area: 252 sq. ft
Counted as Living Area:
Yes

Heated: Yes
Finished: Yes
Enclosed: Yes
Contiguous:
Yes
Permitted: Yes
Wet Space: No
Addition: No
Conversion: No

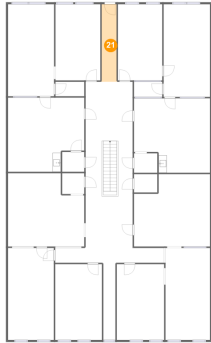
20 Floor 2 - Room



Dimensions: 18'8" x 18'2"
Area: 309 sq. ft
Counted as Living Area:
Yes

Heated: Yes
Finished: Yes
Enclosed: Yes
Contiguous:
Yes
Permitted: Yes
Wet Space: No
Addition: No
Conversion: No

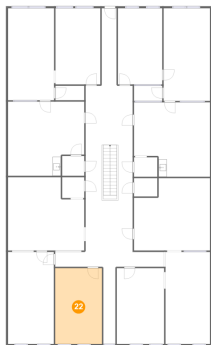
21 Floor 2 - Entry



Dimensions: 3'7" x 19'0"
Area: 69 sq. ft
Counted as Living Area:
Yes

Heated: Yes
Finished: Yes
Enclosed: Yes
Contiguous:
Yes
Permitted: Yes
Wet Space: No
Addition: No
Conversion: No

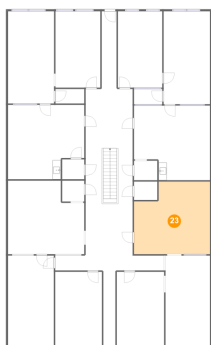
22 Floor 2 - Room



Dimensions: 11'5" x 18'6"
Area: 212 sq. ft
Counted as Living Area:
Yes

Heated: Yes
Finished: Yes
Enclosed: Yes
Contiguous:
Yes
Permitted: Yes
Wet Space: No
Addition: No
Conversion: No

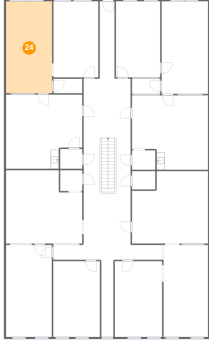
23 Floor 2 - Room



Dimensions: 18'7" x 17'8"
Area: 300 sq. ft
Counted as Living Area:
Yes

Heated: Yes
Finished: Yes
Enclosed: Yes
Contiguous:
Yes
Permitted: Yes
Wet Space: No
Addition: No
Conversion: No

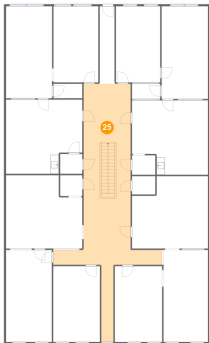
24 Floor 2 - Room



Dimensions: 11'3" x 22'6"
Area: 254 sq. ft
Counted as Living Area:
Yes

Heated: Yes
Finished: Yes
Enclosed: Yes
Contiguous:
Yes
Permitted: Yes
Wet Space: No
Addition: No
Conversion: No

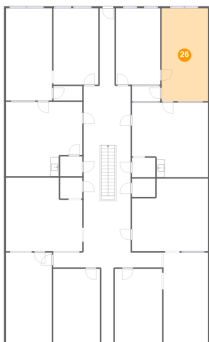
25 Floor 2 - Hall



Dimensions: 26'8" x 63'1"
Area: 620 sq. ft
Counted as Living Area:
Yes

Heated: Yes
Finished: Yes
Enclosed: Yes
Contiguous:
Yes
Permitted: Yes
Wet Space: No
Addition: No
Conversion: No

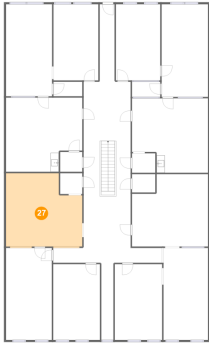
26 Floor 2 - Room



Dimensions: 11'4" x 22'8"
Area: 257 sq. ft
Counted as Living Area:
Yes

Heated: Yes
Finished: Yes
Enclosed: Yes
Contiguous:
Yes
Permitted: Yes
Wet Space: No
Addition: No
Conversion: No

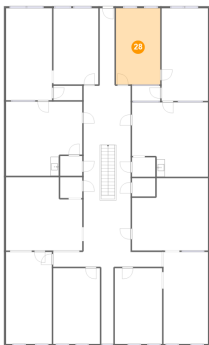
27 Floor 2 - Room



Dimensions: 18'8" x 17'11"
Area: 308 sq. ft
Counted as Living Area:
Yes

Heated: Yes
Finished: Yes
Enclosed: Yes
Contiguous:
Yes
Permitted: Yes
Wet Space: No
Addition: No
Conversion: No

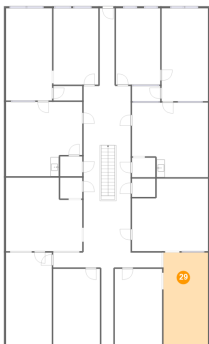
28 Floor 2 - Room



Dimensions: 10'10" x 18'8"
Area: 202 sq. ft
Counted as Living Area:
Yes

Heated: Yes
Finished: Yes
Enclosed: Yes
Contiguous:
Yes
Permitted: Yes
Wet Space: No
Addition: No
Conversion: No

29 Floor 2 - Room

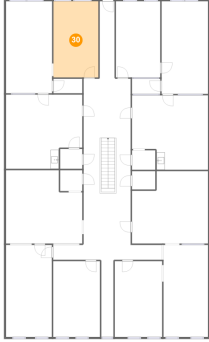


Dimensions: 10'11" x 22'6"
Area: 245 sq. ft
Counted as Living Area:
Yes

Heated: Yes
Finished: Yes
Enclosed: Yes
Contiguous:
Yes
Permitted: Yes
Wet Space: No
Addition: No
Conversion: No

40 N Main St, St Albans City, VT, US

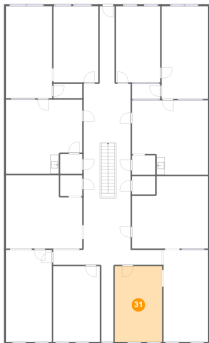
30 Floor 2 - Room



Dimensions: 11'0" x 18'8"
Area: 205 sq. ft
Counted as Living Area:
Yes

Heated: Yes
Finished: Yes
Enclosed: Yes
Contiguous:
Yes
Permitted: Yes
Wet Space: No
Addition: No
Conversion: No

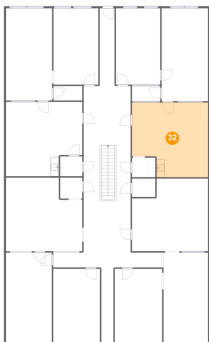
31 Floor 2 - Room



Dimensions: 11'7" x 18'6"
Area: 215 sq. ft
Counted as Living Area:
Yes

Heated: Yes
Finished: Yes
Enclosed: Yes
Contiguous:
Yes
Permitted: Yes
Wet Space: No
Addition: No
Conversion: No

32 Floor 2 - Room



Dimensions: 18'7" x 18'2"
Area: 308 sq. ft
Counted as Living Area:
Yes

Heated: Yes
Finished: Yes
Enclosed: Yes
Contiguous:
Yes
Permitted: Yes
Wet Space: No
Addition: No
Conversion: No