

Home report

2410 Cornwallis Avenue Southeast, South Roanoke, Roanoke,  
Roanoke city, Virginia, United States, 24014



Total Area: 3183 sq. ft

Floor 1: 0 sq. ft, Floor 2: 1699 sq. ft, Floor 3: 1364 sq. ft, Floor 4: 120 sq. ft  
Excluded: Storage 234 sq. ft, Undefined 30 sq. ft, Basement 206 sq. ft, Outdoor Porch 33 sq. ft, Outdoor Patio 434 sq. ft, Embeddedwindow 9 sq. ft, Fireplace 12 sq. ft, Closet Walkin 89 sq. ft, Low Ceiling 426 sq. ft

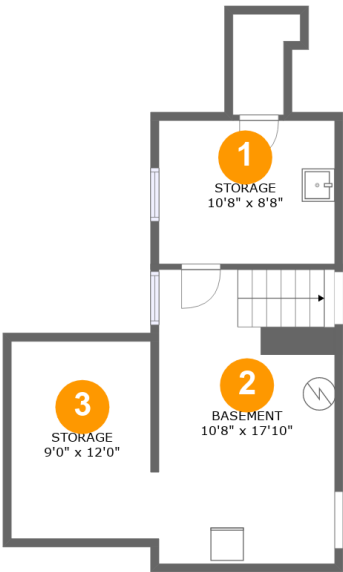
Property summary

 **4**  
Floors

 **4**  
Bedrooms

 **2**  
Bathrooms

2410 Cornwallis Avenue Southeast, South Roanoke, Roanoke,  
Roanoke city, Virginia, United States, 24014



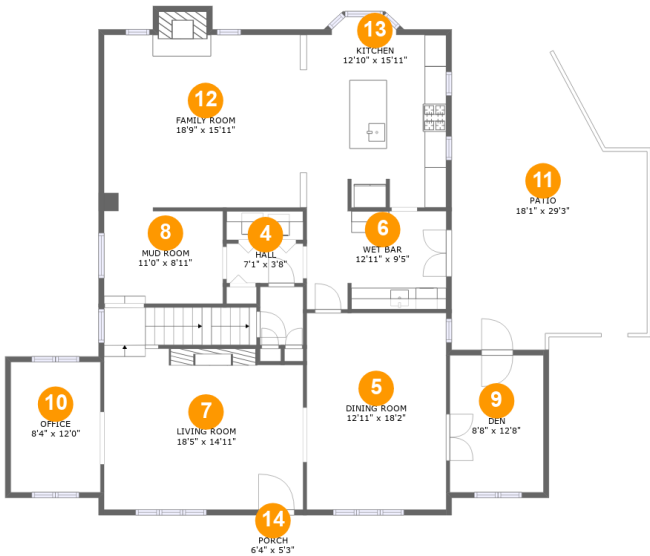
Room dimensions

Floor 1 Total:0sqft   Excluded: 470sqft

#		Max Dimensions	sqft	Included
1	Storage	10'8" x 8'8"	93 sq. ft	No
2	Basement	10'8" x 17'10"	190 sq. ft	No
3	Storage	9'0" x 12'0"	103 sq. ft	No

Home report

2410 Cornwallis Avenue Southeast, South Roanoke, Roanoke, Roanoke city, Virginia, United States, 24014

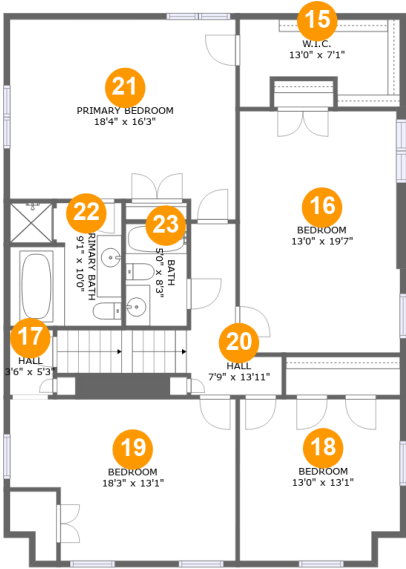


Room dimensions

Floor 2 Total:1699sqft Excluded: 488sqft

#		Max Dimensions	sqft	Included
4	Hall	7'1" x 3'8"	26 sq. ft	Yes
5	Dining Room	12'11" x 18'2"	234 sq. ft	Yes
6	Wet Bar	12'11" x 9'5"	117 sq. ft	Yes
7	Living Room	18'5" x 14'11"	318 sq. ft	Yes
8	Mud Room	11'0" x 8'11"	95 sq. ft	Yes
9	Den	8'8" x 12'8"	110 sq. ft	Yes
10	Office	8'4" x 12'0"	100 sq. ft	Yes
11	Patio	18'1" x 29'3"	434 sq. ft	No
12	Family Room	18'9" x 15'11"	309 sq. ft	Yes
13	Kitchen	12'10" x 15'11"	204 sq. ft	Yes
14	Porch	6'4" x 5'3"	33 sq. ft	No

2410 Cornwallis Avenue Southeast, South Roanoke, Roanoke,  
Roanoke city, Virginia, United States, 24014

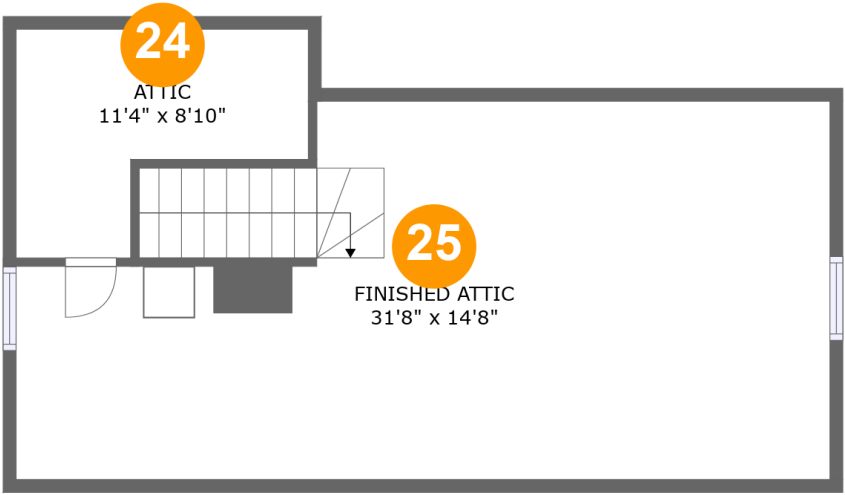


Room dimensions

Floor 3 Total:1364sqft    Excluded: 89sqft

#		Max Dimensions	sqft	Included
15	W.I.C.	13'0" x 7'1"	79 sq. ft	No
16	Bedroom	13'0" x 19'7"	251 sq. ft	Yes
17	Hall	3'6" x 5'3"	18 sq. ft	Yes
18	Bedroom	13'0" x 13'1"	165 sq. ft	Yes
19	Bedroom	18'3" x 13'1"	215 sq. ft	Yes
20	Hall	7'9" x 13'11"	100 sq. ft	Yes
21	Primary Bedroom	18'4" x 16'3"	272 sq. ft	Yes
22	Primary Bath	9'1" x 10'0"	88 sq. ft	Yes
23	Bath	5'0" x 8'3"	41 sq. ft	Yes

2410 Cornwallis Avenue Southeast, South Roanoke, Roanoke,  
Roanoke city, Virginia, United States, 24014



Room dimensions

Floor 4 Total:120sqft   Excluded: 426sqft

#		Max Dimensions	sqft	Included
24	Attic	11'4" x 8'10"	74 sq. ft	No
25	Finished Attic	31'8" x 14'8"	110 sq. ft	Yes

2410 Cornwallis Avenue Southeast, South Roanoke, Roanoke,  
Roanoke city, Virginia, United States, 24014

1 Floor 1 - Storage



Max Dimensions: 10'8" x 8'8"  
Calculated Area: 93 sq. ft  
Included: No

Heated: No  
Finished: No  
Enclosed: No  
Contiguous: No  
Permitted: Yes  
Wet space: No  
Addition: No  
Conversion: No

2 Floor 1 - Basement



Max Dimensions: 10'8" x 17'10"  
Calculated Area: 190 sq. ft  
Included: No

Heated: Yes  
Finished: No  
Enclosed: Yes  
Contiguous: Yes  
Permitted: Yes  
Wet space: No  
Addition: No  
Conversion: No

2410 Cornwallis Avenue Southeast, South Roanoke, Roanoke,  
Roanoke city, Virginia, United States, 24014

3 Floor 1 - Storage



Max Dimensions: 9'0" x 12'0"  
Calculated Area: 103 sq. ft  
Included: No

Heated: No  
Finished: No  
Enclosed: No  
Contiguous: No  
Permitted: Yes  
Wet space: No  
Addition: No  
Conversion: No

4 Floor 2 - Hall



Max Dimensions: 7'1" x 3'8"  
Calculated Area: 26 sq. ft  
Included: Yes

Heated: Yes  
Finished: Yes  
Enclosed: Yes  
Contiguous: Yes  
Permitted: Yes  
Wet space: No  
Addition: No  
Conversion: No

5 Floor 2 - Dining Room



Max Dimensions: 12'11" x 18'2"  
Calculated Area: 234 sq. ft  
Included: Yes

Heated: Yes  
Finished: Yes  
Enclosed: Yes  
Contiguous: Yes  
Permitted: Yes  
Wet space: No  
Addition: No  
Conversion: No

2410 Cornwallis Avenue Southeast, South Roanoke, Roanoke,  
Roanoke city, Virginia, United States, 24014

6 Floor 2 - Wet Bar



Max Dimensions: 12'11" x 9'5"  
Calculated Area: 117 sq. ft  
Included: Yes

Heated: Yes  
Finished: Yes  
Enclosed: Yes  
Contiguous: Yes  
Permitted: Yes  
Wet space: No  
Addition: No  
Conversion: No

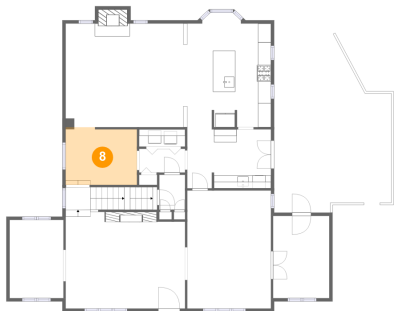
7 Floor 2 - Living Room



Max Dimensions: 18'5" x 14'11"  
Calculated Area: 318 sq. ft  
Included: Yes

Heated: Yes  
Finished: Yes  
Enclosed: Yes  
Contiguous: Yes  
Permitted: Yes  
Wet space: No  
Addition: No  
Conversion: No

8 Floor 2 - Mud Room



Max Dimensions: 11'0" x 8'11"  
Calculated Area: 95 sq. ft  
Included: Yes

Heated: Yes  
Finished: Yes  
Enclosed: Yes  
Contiguous: Yes  
Permitted: Yes  
Wet space: No  
Addition: No  
Conversion: No



2410 Cornwallis Avenue Southeast, South Roanoke, Roanoke,  
Roanoke city, Virginia, United States, 24014

## 9 Floor 2 - Den



Max Dimensions: 8'8" x 12'8"  
Calculated Area: 110 sq. ft  
Included: Yes

Heated: Yes  
Finished: Yes  
Enclosed: Yes  
Contiguous: Yes  
Permitted: Yes  
Wet space: No  
Addition: No  
Conversion: No

## 10 Floor 2 - Office



Max Dimensions: 8'4" x 12'0"  
Calculated Area: 100 sq. ft  
Included: Yes

Heated: Yes  
Finished: Yes  
Enclosed: Yes  
Contiguous: Yes  
Permitted: Yes  
Wet space: No  
Addition: No  
Conversion: No

## 11 Floor 2 - Patio



Max Dimensions: 18'1" x 29'3"  
Calculated Area: 434 sq. ft  
Included: No

Heated: No  
Finished: Yes  
Enclosed: No  
Contiguous: Yes  
Permitted: Yes  
Wet space: No  
Addition: No  
Conversion: No

2410 Cornwallis Avenue Southeast, South Roanoke, Roanoke,  
Roanoke city, Virginia, United States, 24014

12 Floor 2 - Family Room



Max Dimensions: 18'9" x 15'11"  
Calculated Area: 309 sq. ft  
Included: Yes

Heated: Yes  
Finished: Yes  
Enclosed: Yes  
Contiguous: Yes  
Permitted: Yes  
Wet space: No  
Addition: No  
Conversion: No

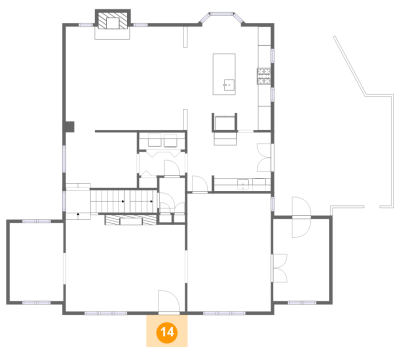
13 Floor 2 - Kitchen



Max Dimensions: 12'10" x 15'11"  
Calculated Area: 204 sq. ft  
Included: Yes

Heated: Yes  
Finished: Yes  
Enclosed: Yes  
Contiguous: Yes  
Permitted: Yes  
Wet space: No  
Addition: No  
Conversion: No

14 Floor 2 - Porch



Max Dimensions: 6'4" x 5'3"  
Calculated Area: 33 sq. ft  
Included: No

Heated: No  
Finished: Yes  
Enclosed: No  
Contiguous: Yes  
Permitted: Yes  
Wet space: No  
Addition: No  
Conversion: No

2410 Cornwallis Avenue Southeast, South Roanoke, Roanoke,  
Roanoke city, Virginia, United States, 24014

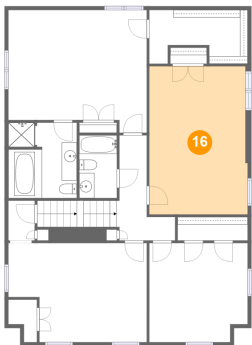
15 Floor 3 - W.I.C.



Max Dimensions: 13'0" x 7'1"  
Calculated Area: 79 sq. ft  
Included: No

Heated: Yes  
Finished: No  
Enclosed: Yes  
Contiguous: Yes  
Permitted: Yes  
Wet space: No  
Addition: No  
Conversion: No

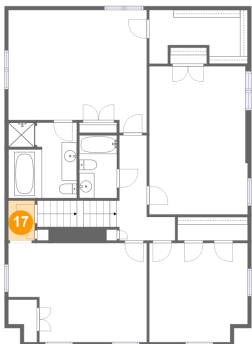
16 Floor 3 - Bedroom



Max Dimensions: 13'0" x 19'7"  
Calculated Area: 251 sq. ft  
Included: Yes

Heated: Yes  
Finished: Yes  
Enclosed: Yes  
Contiguous: Yes  
Permitted: Yes  
Wet space: No  
Addition: No  
Conversion: No

17 Floor 3 - Hall

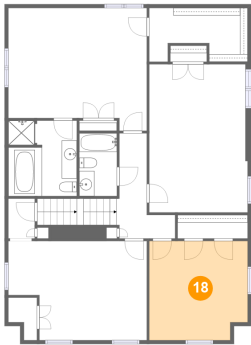


Max Dimensions: 3'6" x 5'3"  
Calculated Area: 18 sq. ft  
Included: Yes

Heated: Yes  
Finished: Yes  
Enclosed: Yes  
Contiguous: Yes  
Permitted: Yes  
Wet space: No  
Addition: No  
Conversion: No

2410 Cornwallis Avenue Southeast, South Roanoke, Roanoke,  
Roanoke city, Virginia, United States, 24014

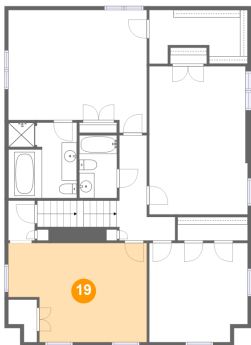
18 Floor 3 - Bedroom



Max Dimensions: 13'0" x 13'1"  
Calculated Area: 165 sq. ft  
Included: Yes

Heated: Yes  
Finished: Yes  
Enclosed: Yes  
Contiguous: Yes  
Permitted: Yes  
Wet space: No  
Addition: No  
Conversion: No

19 Floor 3 - Bedroom



Max Dimensions: 18'3" x 13'1"  
Calculated Area: 215 sq. ft  
Included: Yes

Heated: Yes  
Finished: Yes  
Enclosed: Yes  
Contiguous: Yes  
Permitted: Yes  
Wet space: No  
Addition: No  
Conversion: No

20 Floor 3 - Hall



Max Dimensions: 7'9" x 13'11"  
Calculated Area: 100 sq. ft  
Included: Yes

Heated: Yes  
Finished: Yes  
Enclosed: Yes  
Contiguous: Yes  
Permitted: Yes  
Wet space: No  
Addition: No  
Conversion: No

2410 Cornwallis Avenue Southeast, South Roanoke, Roanoke,  
Roanoke city, Virginia, United States, 24014

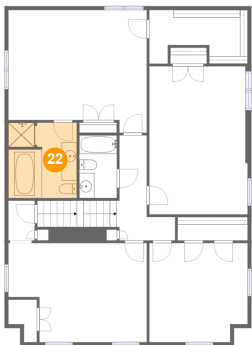
21 Floor 3 - Primary Bedroom



Max Dimensions: 18'4" x 16'3"  
Calculated Area: 272 sq. ft  
Included: Yes

Heated: Yes  
Finished: Yes  
Enclosed: Yes  
Contiguous: Yes  
Permitted: Yes  
Wet space: No  
Addition: No  
Conversion: No

22 Floor 3 - Primary Bath



Max Dimensions: 9'1" x 10'0"  
Calculated Area: 88 sq. ft  
Included: Yes

Heated: Yes  
Finished: Yes  
Enclosed: Yes  
Contiguous: Yes  
Permitted: Yes  
Wet space: Yes  
Addition: No  
Conversion: No

23 Floor 3 - Bath

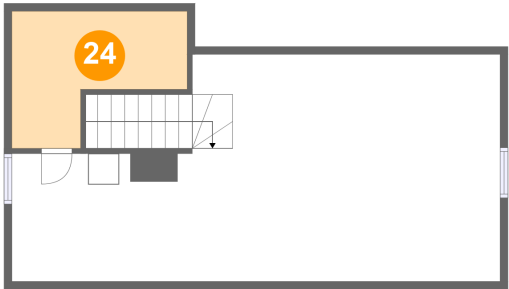


Max Dimensions: 5'0" x 8'3"  
Calculated Area: 41 sq. ft  
Included: Yes

Heated: Yes  
Finished: Yes  
Enclosed: Yes  
Contiguous: Yes  
Permitted: Yes  
Wet space: Yes  
Addition: No  
Conversion: No

2410 Cornwallis Avenue Southeast, South Roanoke, Roanoke,  
Roanoke city, Virginia, United States, 24014

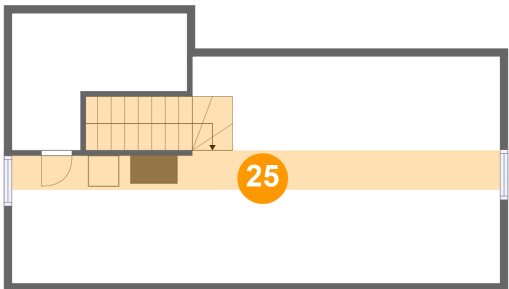
24 Floor 4 - Attic



Max Dimensions: 11'4" x 8'10"  
Calculated Area: 74 sq. ft  
Included: No

Heated: No  
Finished: No  
Enclosed: Yes  
Contiguous: Yes  
Permitted: Yes  
Wet space: No  
Addition: No  
Conversion: No

25 Floor 4 - Finished Attic



Max Dimensions: 31'8" x 14'8"  
Calculated Area: 110 sq. ft  
Included: Yes

Heated: Yes  
Finished: Yes  
Enclosed: Yes  
Contiguous: Yes  
Permitted: Yes  
Wet space: No  
Addition: No  
Conversion: No