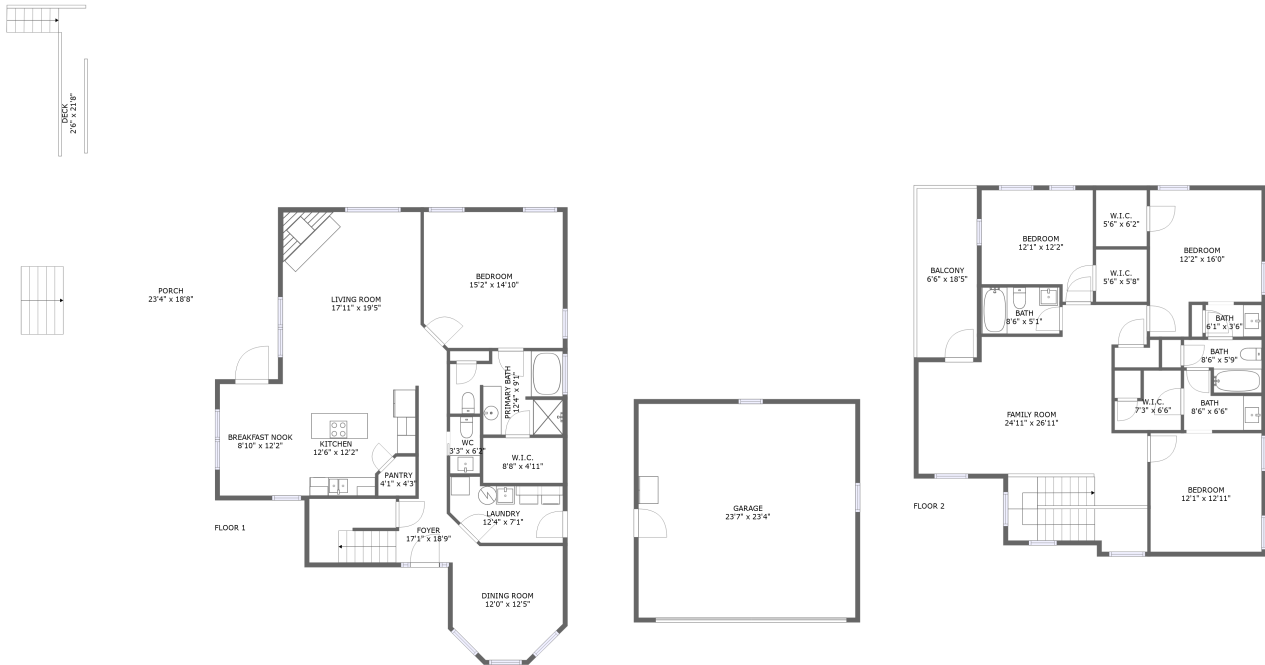
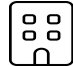




1395 Manley Road, New Market, Madison County, Alabama, United States, 35761

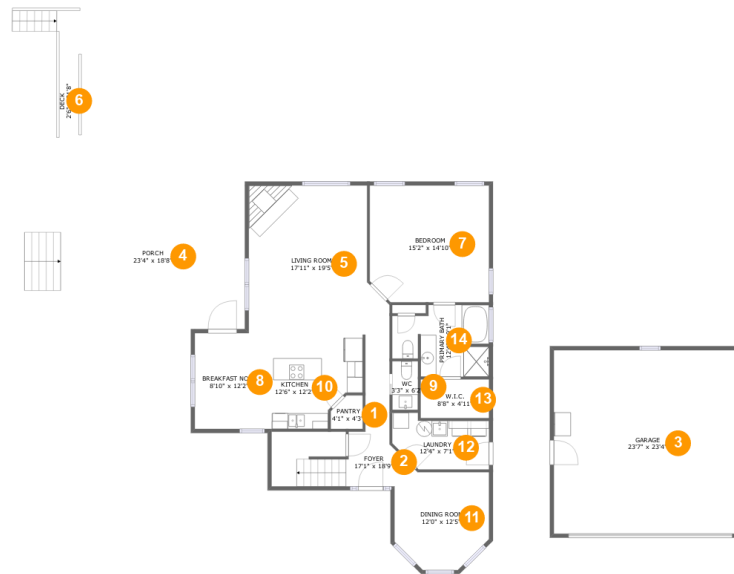


Property Summary

 **1** garages  **4** bedrooms  **3** bathrooms  **1** half baths

 **2** floors  **2,752** Gross Living Area sqft  **3,959** total sqft

1395 Manley Road, New Market, Madison County, Alabama, United States, 35761



Room Dimensions

Floor 1

Total sqft: 2513

Living area: 1426

#	Room name	Dimensions	Area (sqft)	Counted as Living Area
1	Pantry	4'1" x 4'3"	15 sq. ft	Yes
2	Foyer	17'1" x 18'9"	139 sq. ft	Yes
3	Garage	23'7" x 23'4"	550 sq. ft	No
4	Porch	23'4" x 18'8"	436 sq. ft	No
5	Living Room	17'11" x 19'5"	299 sq. ft	Yes
6	Deck	2'6" x 21'8"	53 sq. ft	No
7	Bedroom	15'2" x 14'10"	221 sq. ft	Yes
8	Breakfast Nook	8'10" x 12'2"	108 sq. ft	Yes
9	Wc	3'3" x 6'2"	20 sq. ft	Yes
10	Kitchen	12'6" x 12'2"	133 sq. ft	Yes
11	Dining Room	12'0" x 12'5"	135 sq. ft	Yes

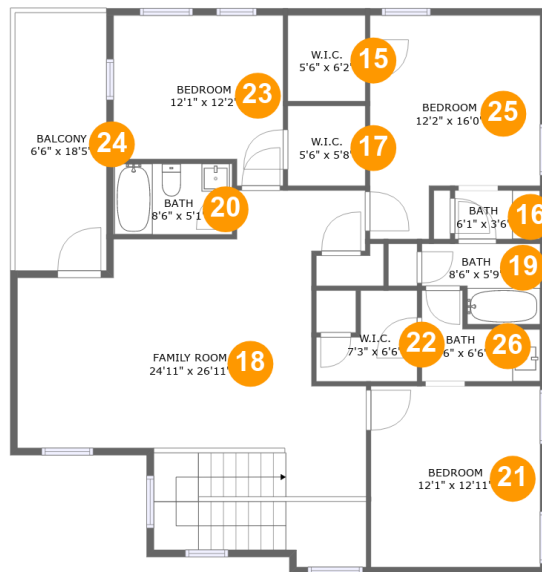
Scan captured on Tue, 18 Jun 2024 16:22:12 GMT

Information is calculated by CubiCasa technology; deemed highly reliable but not guaranteed.

**1395 Manley Road, New Market, Madison County,
Alabama, United States, 35761**

#	Room name	Dimensions	Area (sqft)	Counted as Living Area
12	Laundry	12'4" x 7'1"	74 sq. ft	Yes
13	W.i.c.	8'8" x 4'11"	43 sq. ft	Yes
14	Primary Bath	12'4" x 9'1"	95 sq. ft	Yes

1395 Manley Road, New Market, Madison County, Alabama, United States, 35761



Room Dimensions

Floor 2

Total sqft: 1446

Living area: 1326

#	Room name	Dimensions	Area (sqft)	Counted as Living Area
15	W.i.c.	5'6" x 6'2"	34 sq. ft	Yes
16	Bath	6'1" x 3'6"	21 sq. ft	Yes
17	W.i.c.	5'6" x 5'8"	32 sq. ft	Yes
18	Family Room	24'11" x 26'11"	464 sq. ft	Yes
19	Bath	8'6" x 5'9"	40 sq. ft	Yes
20	Bath	8'6" x 5'1"	43 sq. ft	Yes
21	Bedroom	12'1" x 12'11"	156 sq. ft	Yes
22	W.i.c.	7'3" x 6'6"	36 sq. ft	Yes
23	Bedroom	12'1" x 12'2"	131 sq. ft	Yes
24	Balcony	6'6" x 18'5"	120 sq. ft	No
25	Bedroom	12'2" x 16'0"	164 sq. ft	Yes

Scan captured on Tue, 18 Jun 2024 16:22:12 GMT

Information is calculated by CubiCasa technology; deemed highly reliable but not guaranteed.

**1395 Manley Road, New Market, Madison County,
Alabama, United States, 35761**

#	Room name	Dimensions	Area (sqft)	Counted as Living Area
26	Bath	8'6" x 6'6"	40 sq. ft	Yes

1395 Manley Road, New Market, Madison County, Alabama, United States, 35761

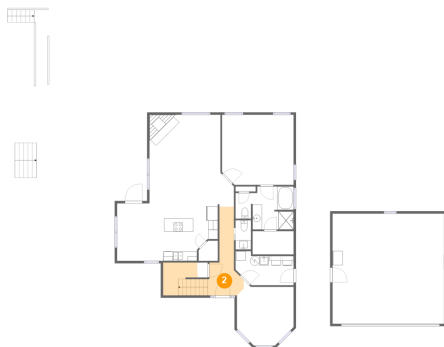
1 Floor 1 - Pantry



Dimensions: 4'1" x 4'3"
Area: 15 sq. ft
Counted as Living Area:
Yes

Heated: Yes
Finished: Yes
Enclosed: Yes
Contiguous:
Yes
Permitted: Yes
Wet Space: No
Addition: No
Conversion: No

2 Floor 1 - Foyer

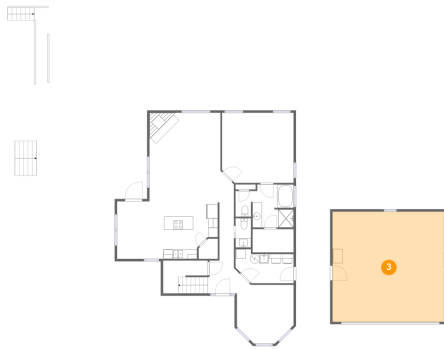


Dimensions: 17'1" x 18'9"
Area: 139 sq. ft
Counted as Living Area:
Yes

Heated: Yes
Finished: Yes
Enclosed: Yes
Contiguous:
Yes
Permitted: Yes
Wet Space: No
Addition: No
Conversion: No

1395 Manley Road, New Market, Madison County, Alabama, United States, 35761

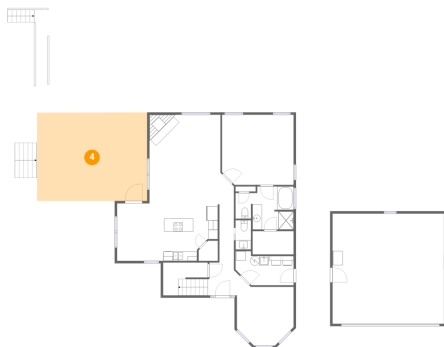
3 Floor 1 - Garage



Dimensions: 23'7" x 23'4"
Area: 550 sq. ft
Counted as Living Area: No

Heated: No
Finished: No
Enclosed: Yes
Contiguous: Yes
Permitted: Yes
Wet Space: No
Addition: No
Conversion: No

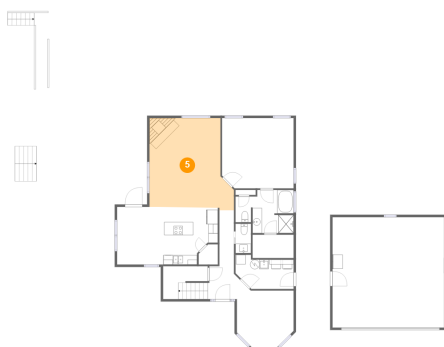
4 Floor 1 - Porch



Dimensions: 23'4" x 18'8"
Area: 436 sq. ft
Counted as Living Area: No

Heated: No
Finished: Yes
Enclosed: No
Contiguous: Yes
Permitted: Yes
Wet Space: No
Addition: No
Conversion: No

5 Floor 1 - Living Room

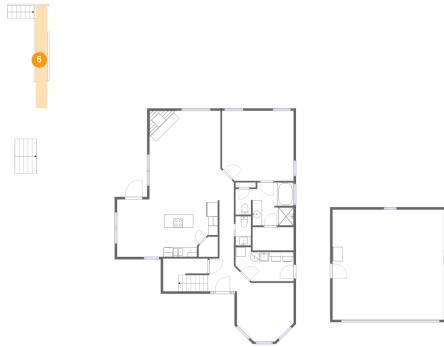


Dimensions: 17'11" x 19'5"
Area: 299 sq. ft
Counted as Living Area:
Yes

Heated: Yes
Finished: Yes
Enclosed: Yes
Contiguous:
Yes
Permitted: Yes
Wet Space: No
Addition: No
Conversion: No

1395 Manley Road, New Market, Madison County, Alabama, United States, 35761

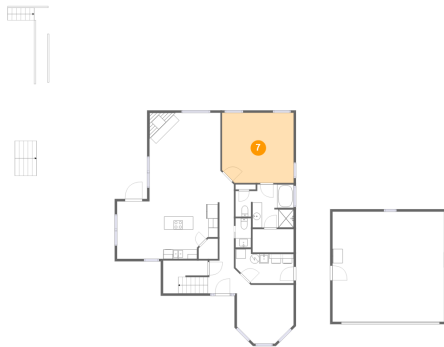
6 Floor 1 - Deck



Dimensions: 2'6" x 21'8"
Area: 53 sq. ft
Counted as Living Area: No

Heated: No
Finished: Yes
Enclosed: No
Contiguous: Yes
Permitted: Yes
Wet Space: No
Addition: No
Conversion: No

7 Floor 1 - Bedroom



Dimensions: 15'2" x 14'10"
Area: 221 sq. ft
Counted as Living Area: Yes

Heated: Yes
Finished: Yes
Enclosed: Yes
Contiguous: Yes
Permitted: Yes
Wet Space: No
Addition: No
Conversion: No

8 Floor 1 - Breakfast Nook



Dimensions: 8'10" x 12'2"
Area: 108 sq. ft
Counted as Living Area: Yes

Heated: Yes
Finished: Yes
Enclosed: Yes
Contiguous: Yes
Permitted: Yes
Wet Space: No
Addition: No
Conversion: No

1395 Manley Road, New Market, Madison County, Alabama, United States, 35761

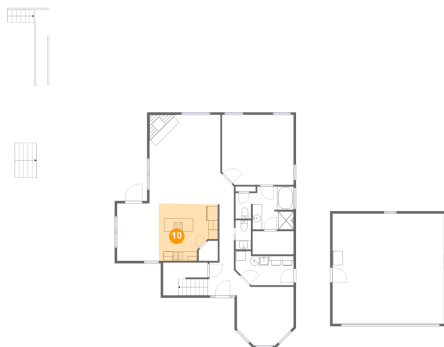
9 Floor 1 - Wc



Dimensions: 3'3" x 6'2"
Area: 20 sq. ft
Counted as Living Area:
Yes

Heated: Yes
Finished: Yes
Enclosed: Yes
Contiguous:
Yes
Permitted: Yes
Wet Space: Yes
Addition: No
Conversion: No

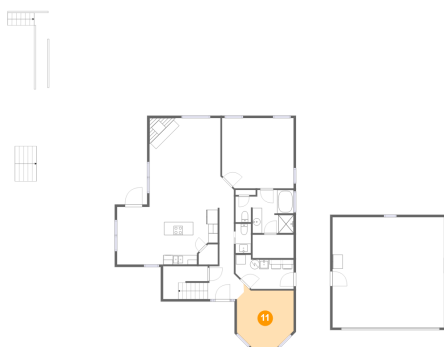
10 Floor 1 - Kitchen



Dimensions: 12'6" x 12'2"
Area: 133 sq. ft
Counted as Living Area:
Yes

Heated: Yes
Finished: Yes
Enclosed: Yes
Contiguous:
Yes
Permitted: Yes
Wet Space: No
Addition: No
Conversion: No

11 Floor 1 - Dining Room



Dimensions: 12'0" x 12'5"
Area: 135 sq. ft
Counted as Living Area:
Yes

Heated: Yes
Finished: Yes
Enclosed: Yes
Contiguous:
Yes
Permitted: Yes
Wet Space: No
Addition: No
Conversion: No

**1395 Manley Road, New Market, Madison County,
Alabama, United States, 35761****12 Floor 1 - Laundry**

Dimensions: 12'4" x 7'1"
Area: 74 sq. ft
Counted as Living Area:
Yes

Heated: Yes
Finished: Yes
Enclosed: Yes
Contiguous:
Yes
Permitted: Yes
Wet Space: No
Addition: No
Conversion: No

13 Floor 1 - W.i.c.

Dimensions: 8'8" x 4'11"
Area: 43 sq. ft
Counted as Living Area:
Yes

Heated: Yes
Finished: Yes
Enclosed: Yes
Contiguous:
Yes
Permitted: Yes
Wet Space: No
Addition: No
Conversion: No

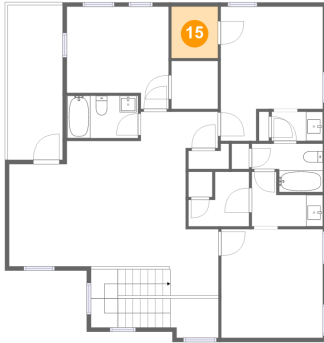
14 Floor 1 - Primary Bath

Dimensions: 12'4" x 9'1"
Area: 95 sq. ft
Counted as Living Area:
Yes

Heated: Yes
Finished: Yes
Enclosed: Yes
Contiguous:
Yes
Permitted: Yes
Wet Space: Yes
Addition: No
Conversion: No

1395 Manley Road, New Market, Madison County, Alabama, United States, 35761

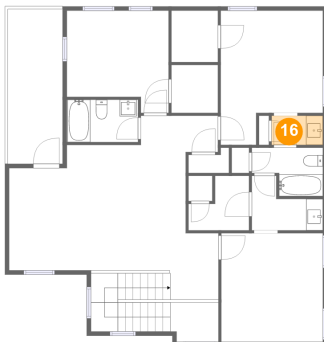
15 Floor 2 - W.i.c.



Dimensions: 5'6" x 6'2"
Area: 34 sq. ft
Counted as Living Area:
Yes

Heated: Yes
Finished: Yes
Enclosed: Yes
Contiguous:
Yes
Permitted: Yes
Wet Space: No
Addition: No
Conversion: No

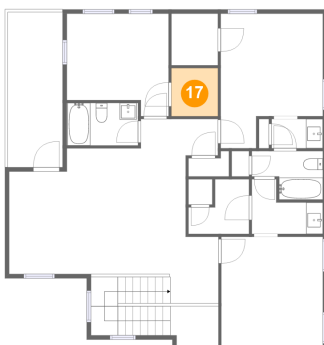
16 Floor 2 - Bath



Dimensions: 6'1" x 3'6"
Area: 21 sq. ft
Counted as Living Area:
Yes

Heated: Yes
Finished: Yes
Enclosed: Yes
Contiguous:
Yes
Permitted: Yes
Wet Space: Yes
Addition: No
Conversion: No

17 Floor 2 - W.i.c.

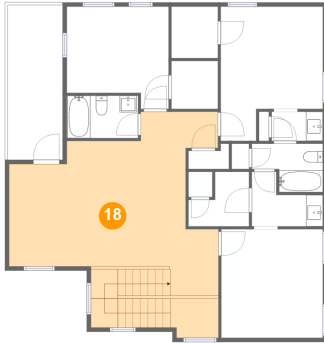


Dimensions: 5'6" x 5'8"
Area: 32 sq. ft
Counted as Living Area:
Yes

Heated: Yes
Finished: Yes
Enclosed: Yes
Contiguous:
Yes
Permitted: Yes
Wet Space: No
Addition: No
Conversion: No

1395 Manley Road, New Market, Madison County, Alabama, United States, 35761

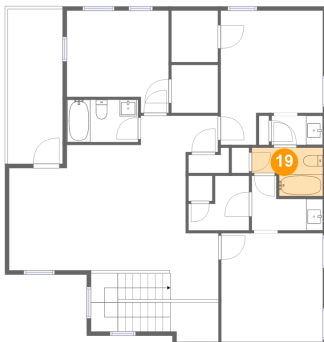
18 Floor 2 - Family Room



Dimensions: 24'11" x 26'11"
Area: 464 sq. ft
Counted as Living Area:
Yes

Heated: Yes
Finished: Yes
Enclosed: Yes
Contiguous:
Yes
Permitted: Yes
Wet Space: No
Addition: No
Conversion: No

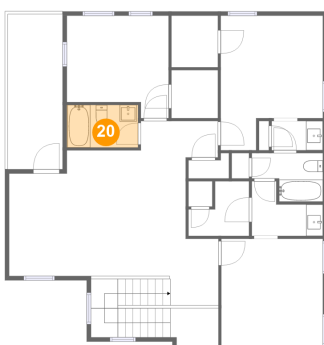
19 Floor 2 - Bath



Dimensions: 8'6" x 5'9"
Area: 40 sq. ft
Counted as Living Area:
Yes

Heated: Yes
Finished: Yes
Enclosed: Yes
Contiguous:
Yes
Permitted: Yes
Wet Space: Yes
Addition: No
Conversion: No

20 Floor 2 - Bath

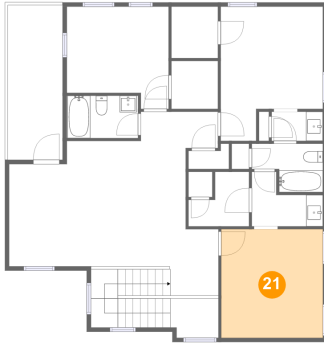


Dimensions: 8'6" x 5'1"
Area: 43 sq. ft
Counted as Living Area:
Yes

Heated: Yes
Finished: Yes
Enclosed: Yes
Contiguous:
Yes
Permitted: Yes
Wet Space: Yes
Addition: No
Conversion: No

1395 Manley Road, New Market, Madison County, Alabama, United States, 35761

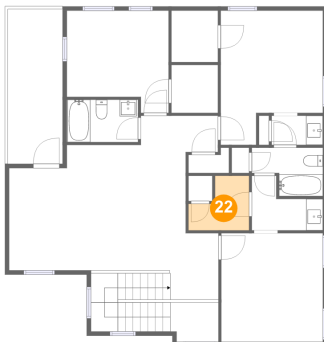
21 Floor 2 - Bedroom



Dimensions: 12'1" x 12'11"
Area: 156 sq. ft
Counted as Living Area:
Yes

Heated: Yes
Finished: Yes
Enclosed: Yes
Contiguous:
Yes
Permitted: Yes
Wet Space: No
Addition: No
Conversion: No

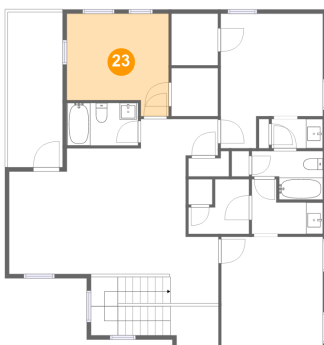
22 Floor 2 - W.i.c.



Dimensions: 7'3" x 6'6"
Area: 36 sq. ft
Counted as Living Area:
Yes

Heated: Yes
Finished: Yes
Enclosed: Yes
Contiguous:
Yes
Permitted: Yes
Wet Space: No
Addition: No
Conversion: No

23 Floor 2 - Bedroom

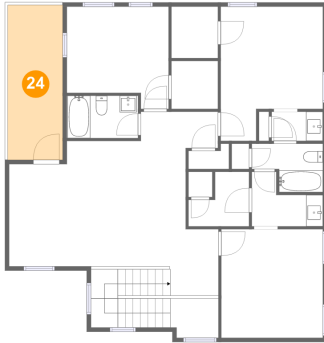


Dimensions: 12'1" x 12'2"
Area: 131 sq. ft
Counted as Living Area:
Yes

Heated: Yes
Finished: Yes
Enclosed: Yes
Contiguous:
Yes
Permitted: Yes
Wet Space: No
Addition: No
Conversion: No

1395 Manley Road, New Market, Madison County, Alabama, United States, 35761

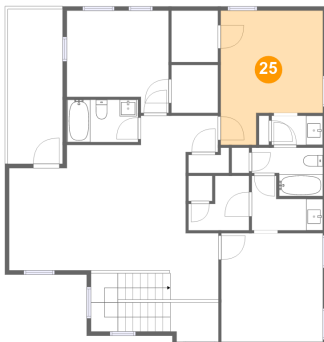
24 Floor 2 - Balcony



Dimensions: 6'6" x 18'5"
Area: 120 sq. ft
Counted as Living Area: No

Heated: No
Finished: Yes
Enclosed: No
Contiguous: Yes
Permitted: Yes
Wet Space: No
Addition: No
Conversion: No

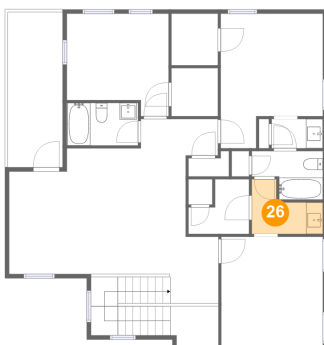
25 Floor 2 - Bedroom



Dimensions: 12'2" x 16'0"
Area: 164 sq. ft
Counted as Living Area:
Yes

Heated: Yes
Finished: Yes
Enclosed: Yes
Contiguous:
Yes
Permitted: Yes
Wet Space: No
Addition: No
Conversion: No

26 Floor 2 - Bath



Dimensions: 8'6" x 6'6"
Area: 40 sq. ft
Counted as Living Area:
Yes

Heated: Yes
Finished: Yes
Enclosed: Yes
Contiguous:
Yes
Permitted: Yes
Wet Space: Yes
Addition: No
Conversion: No