

Home report

239 Florida Avenue, Dunedin Marina, Dunedin, Pinellas County,
Florida, United States, 34698



Total Area: 2476 sq. ft
Floor 1: 1576 sq. ft, Floor 2: 900 sq. ft
Excluded: Screened porch 252 sq. ft, Covered patio 91 sq. ft, Garage 553 sq. ft, Walls: 227 sq. ft

Property summary

 **2** Floors

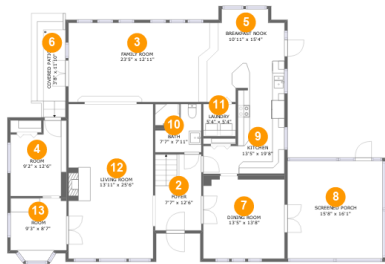
 **3** Bedrooms

 **2** Bathrooms

 **1** Garages

Home report

239 Florida Avenue, Dunedin Marina, Dunedin, Pinellas County, Florida, United States, 34698



Room dimensions

Floor 1 Total:1576sqft Excluded: 896sqft

#		Max Dimensions	sqft	Included
1	Garage	23'6" x 23'6"	553 sq. ft	No
2	Foyer	7'7" x 12'6"	95 sq. ft	Yes
3	Family Room	23'5" x 12'11"	308 sq. ft	Yes
4	Room	9'2" x 12'6"	103 sq. ft	Yes
5	Breakfast Nook	10'11" x 15'4"	112 sq. ft	Yes
6	Covered Patio	3'8" x 11'10"	91 sq. ft	No
7	Dining Room	13'5" x 13'8"	183 sq. ft	Yes
8	Screened Porch	15'8" x 16'1"	252 sq. ft	No
9	Kitchen	13'5" x 19'8"	178 sq. ft	Yes
10	Bath	7'7" x 7'11"	59 sq. ft	Yes
11	Laundry	5'4" x 5'4"	28 sq. ft	Yes

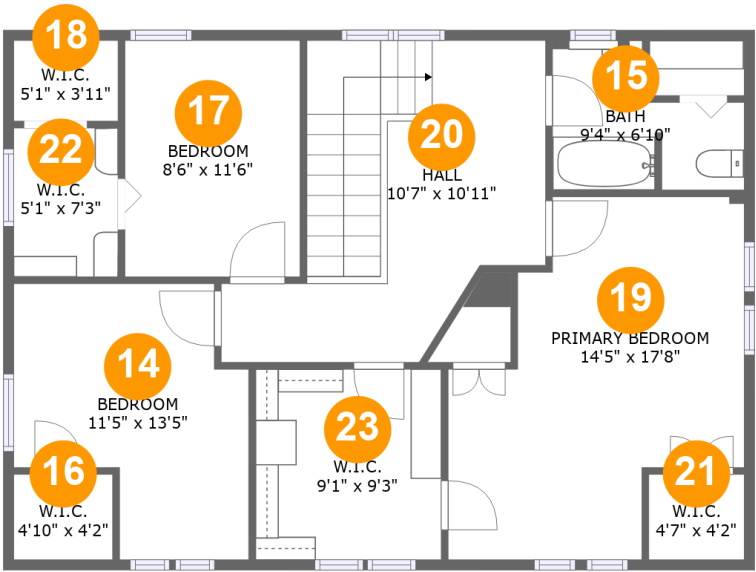
Home report

239 Florida Avenue, Dunedin Marina, Dunedin, Pinellas County,
Florida, United States, 34698

#		Max Dimensions	sqft	Included
12	Living Room	13'11" x 25'6"	355 sq. ft	Yes
13	Room	9'3" x 8'7"	88 sq. ft	Yes

Home report

239 Florida Avenue, Dunedin Marina, Dunedin, Pinellas County, Florida, United States, 34698



Room dimensions

Floor 2 Total:900sqft Excluded: 0sqft

#		Max Dimensions	sqft	Included
14	Bedroom	11'5" x 13'5"	124 sq. ft	Yes
15	Bath	9'4" x 6'10"	52 sq. ft	Yes
16	W.I.C.	4'10" x 4'2"	20 sq. ft	Yes
17	Bedroom	8'6" x 11'6"	98 sq. ft	Yes
18	W.I.C.	5'1" x 3'11"	20 sq. ft	Yes
19	Primary Bedroom	14'5" x 17'8"	198 sq. ft	Yes
20	Hall	10'7" x 10'11"	176 sq. ft	Yes
21	W.I.C.	4'7" x 4'2"	19 sq. ft	Yes
22	W.I.C.	5'1" x 7'3"	37 sq. ft	Yes
23	W.I.C.	9'1" x 9'3"	84 sq. ft	Yes

1 Floor 1 - Garage



Max Dimensions: 23'6" x 23'6"
Calculated Area: 553 sq. ft
Included: No

Heated: No
Finished: No
Enclosed: Yes
Contiguous: Yes
Permitted: Yes
Wet space: No
Addition: No
Conversion: No

2 Floor 1 - Foyer



Max Dimensions: 7'7" x 12'6"
Calculated Area: 95 sq. ft
Included: Yes

Heated: Yes
Finished: Yes
Enclosed: Yes
Contiguous: Yes
Permitted: Yes
Wet space: No
Addition: No
Conversion: No

3 Floor 1 - Family Room



Max Dimensions: 23'5" x 12'11"
Calculated Area: 308 sq. ft
Included: Yes

Heated: Yes
Finished: Yes
Enclosed: Yes
Contiguous: Yes
Permitted: Yes
Wet space: No
Addition: No
Conversion: No



4 Floor 1 - Room



Max Dimensions: 9'2" x 12'6"
Calculated Area: 103 sq. ft
Included: Yes

Heated: Yes
Finished: Yes
Enclosed: Yes
Contiguous: Yes
Permitted: Yes
Wet space: No
Addition: No
Conversion: No



5 Floor 1 - Breakfast Nook



Max Dimensions: 10'11" x 15'4"
Calculated Area: 112 sq. ft
Included: Yes

Heated: Yes
Finished: Yes
Enclosed: Yes
Contiguous: Yes
Permitted: Yes
Wet space: No
Addition: No
Conversion: No



6 Floor 1 - Covered Patio



Max Dimensions: 3'8" x 11'10"
Calculated Area: 91 sq. ft
Included: No

Heated: No
Finished: Yes
Enclosed: No
Contiguous: Yes
Permitted: Yes
Wet space: No
Addition: No
Conversion: No



7 Floor 1 - Dining Room



Max Dimensions: 13'5" x 13'8"
Calculated Area: 183 sq. ft
Included: Yes

Heated: Yes
Finished: Yes
Enclosed: Yes
Contiguous: Yes
Permitted: Yes
Wet space: No
Addition: No
Conversion: No



8 Floor 1 - Screened Porch



Max Dimensions: 15'8" x 16'1"
Calculated Area: 252 sq. ft
Included: No

Heated: No
Finished: Yes
Enclosed: No
Contiguous: Yes
Permitted: Yes
Wet space: No
Addition: No
Conversion: No



9 Floor 1 - Kitchen



Max Dimensions: 13'5" x 19'8"
Calculated Area: 178 sq. ft
Included: Yes

Heated: Yes
Finished: Yes
Enclosed: Yes
Contiguous: Yes
Permitted: Yes
Wet space: No
Addition: No
Conversion: No



10 Floor 1 - Bath



Max Dimensions: 7'7" x 7'11"
Calculated Area: 59 sq. ft
Included: Yes

Heated: Yes
Finished: Yes
Enclosed: Yes
Contiguous: Yes
Permitted: Yes
Wet space: Yes
Addition: No
Conversion: No



11 Floor 1 - Laundry



Max Dimensions: 5'4" x 5'4"
Calculated Area: 28 sq. ft
Included: Yes

Heated: Yes
Finished: Yes
Enclosed: Yes
Contiguous: Yes
Permitted: Yes
Wet space: No
Addition: No
Conversion: No



12 Floor 1 - Living Room



Max Dimensions: 13'11" x 25'6"
Calculated Area: 355 sq. ft
Included: Yes

Heated: Yes
Finished: Yes
Enclosed: Yes
Contiguous: Yes
Permitted: Yes
Wet space: No
Addition: No
Conversion: No



13 Floor 1 - Room

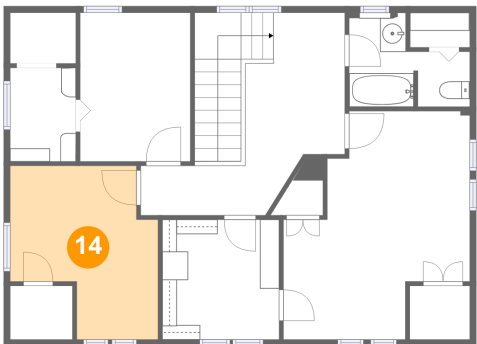


Max Dimensions: 9'3" x 8'7"
Calculated Area: 88 sq. ft
Included: Yes

Heated: Yes
Finished: Yes
Enclosed: Yes
Contiguous: Yes
Permitted: Yes
Wet space: No
Addition: No
Conversion: No



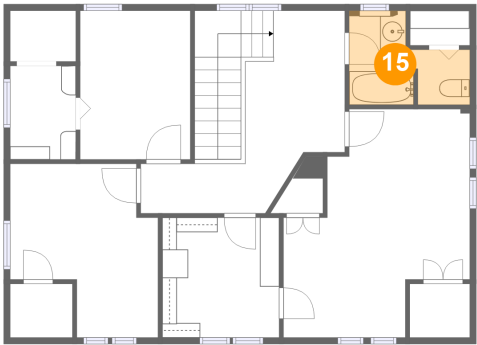
14 Floor 2 - Bedroom



Max Dimensions: 11'5" x 13'5"
Calculated Area: 124 sq. ft
Included: Yes

Heated: Yes
Finished: Yes
Enclosed: Yes
Contiguous: Yes
Permitted: Yes
Wet space: No
Addition: No
Conversion: No

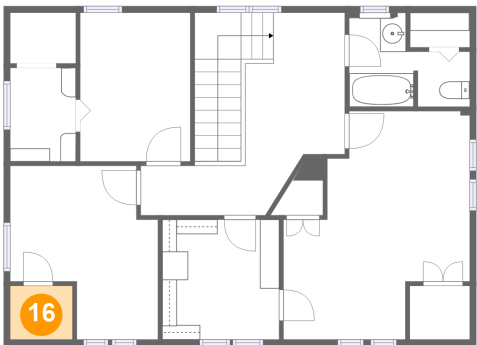
15 Floor 2 - Bath



Max Dimensions: 9'4" x 6'10"
Calculated Area: 52 sq. ft
Included: Yes

Heated: Yes
Finished: Yes
Enclosed: Yes
Contiguous: Yes
Permitted: Yes
Wet space: Yes
Addition: No
Conversion: No

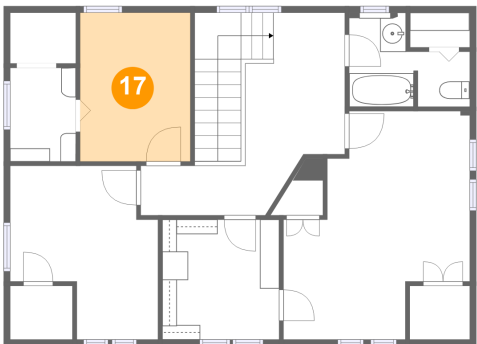
16 Floor 2 - W.I.C.



Max Dimensions: 4'10" x 4'2"
Calculated Area: 20 sq. ft
Included: Yes

Heated: Yes
Finished: Yes
Enclosed: Yes
Contiguous: Yes
Permitted: Yes
Wet space: No
Addition: No
Conversion: No

17 Floor 2 - Bedroom



Max Dimensions: 8'6" x 11'6"
Calculated Area: 98 sq. ft
Included: Yes

Heated: Yes
Finished: Yes
Enclosed: Yes
Contiguous: Yes
Permitted: Yes
Wet space: No
Addition: No
Conversion: No

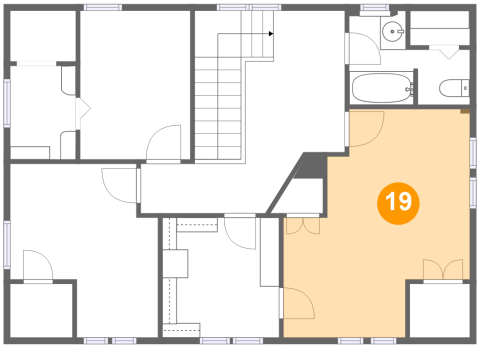
18 Floor 2 - W.I.C.



Max Dimensions: 5'1" x 3'11"
Calculated Area: 20 sq. ft
Included: Yes

Heated: Yes
Finished: Yes
Enclosed: Yes
Contiguous: Yes
Permitted: Yes
Wet space: No
Addition: No
Conversion: No

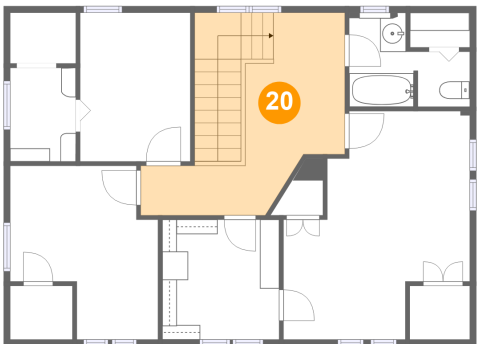
19 Floor 2 - Primary Bedroom



Max Dimensions: 14'5" x 17'8"
Calculated Area: 198 sq. ft
Included: Yes

Heated: Yes
Finished: Yes
Enclosed: Yes
Contiguous: Yes
Permitted: Yes
Wet space: No
Addition: No
Conversion: No

20 Floor 2 - Hall



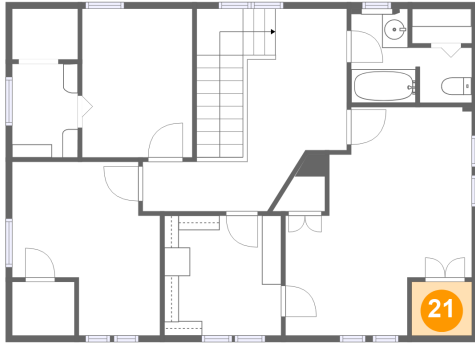
Max Dimensions: 10'7" x 10'11"
Calculated Area: 176 sq. ft
Included: Yes

Heated: Yes
Finished: Yes
Enclosed: Yes
Contiguous: Yes
Permitted: Yes
Wet space: No
Addition: No
Conversion: No

Home report

239 Florida Avenue, Dunedin Marina, Dunedin, Pinellas County,
Florida, United States, 34698

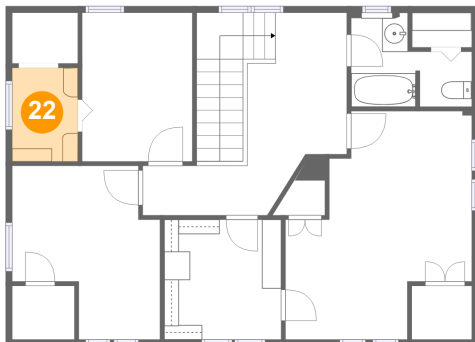
21 Floor 2 - W.I.C.



Max Dimensions: 4'7" x 4'2"
Calculated Area: 19 sq. ft
Included: Yes

Heated: Yes
Finished: Yes
Enclosed: Yes
Contiguous: Yes
Permitted: Yes
Wet space: No
Addition: No
Conversion: No

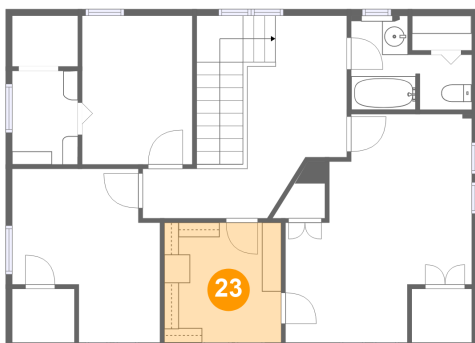
22 Floor 2 - W.I.C.



Max Dimensions: 5'1" x 7'3"
Calculated Area: 37 sq. ft
Included: Yes

Heated: Yes
Finished: Yes
Enclosed: Yes
Contiguous: Yes
Permitted: Yes
Wet space: No
Addition: No
Conversion: No

23 Floor 2 - W.I.C.



Max Dimensions: 9'1" x 9'3"
Calculated Area: 84 sq. ft
Included: Yes

Heated: Yes
Finished: Yes
Enclosed: Yes
Contiguous: Yes
Permitted: Yes
Wet space: No
Addition: No
Conversion: No