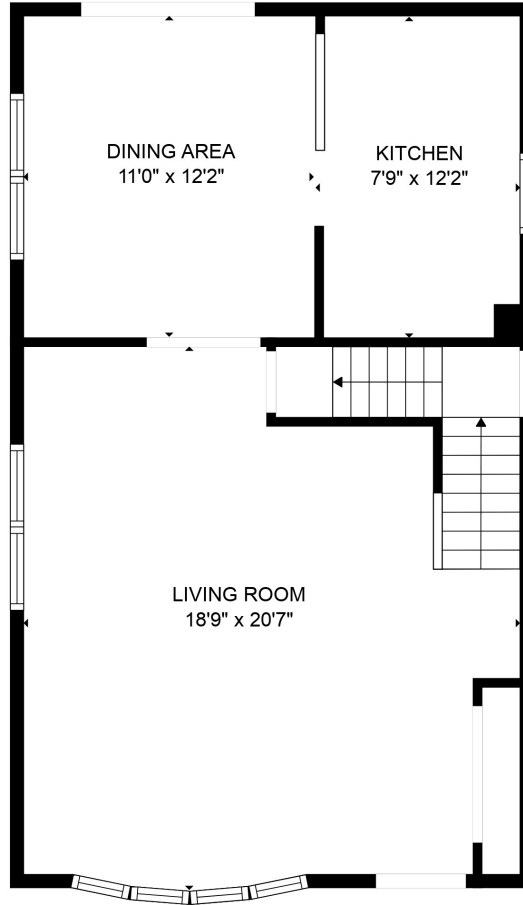
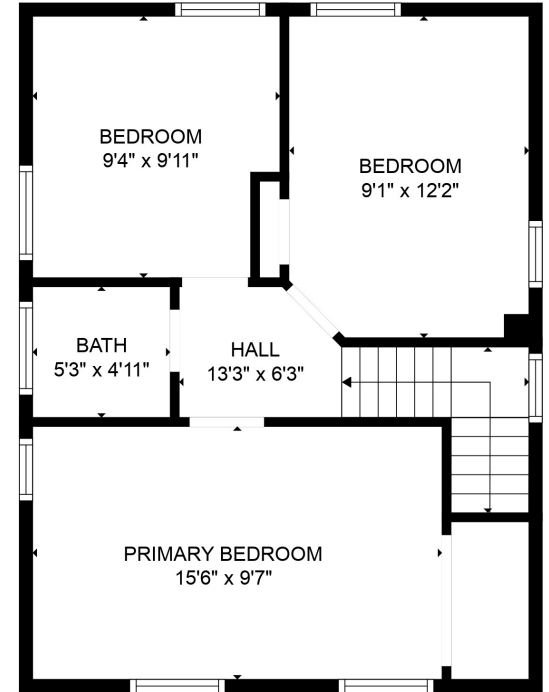


FLOOR 1



FLOOR 2

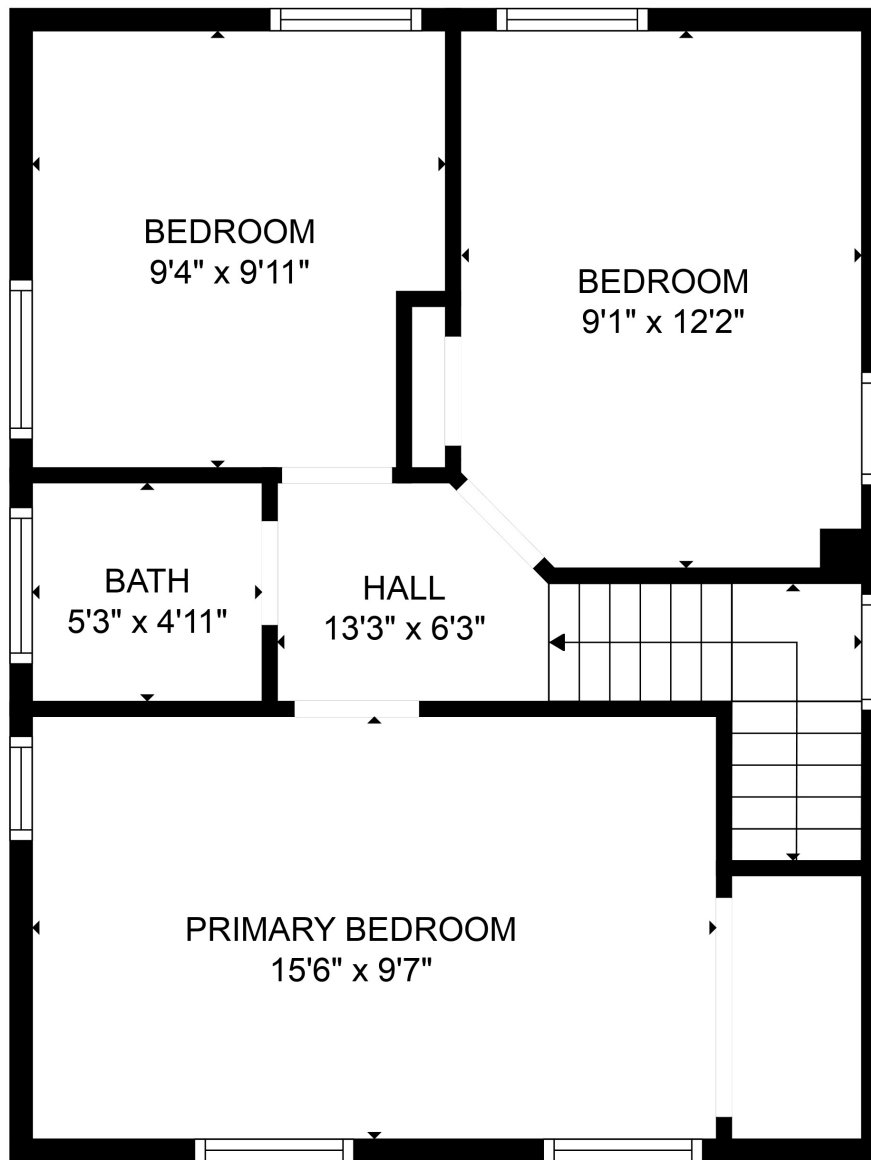


FLOOR 3

**TOTAL: 1543 sq. ft**  
 Below Ground: 458 sq. ft, FLOOR 2: 614 sq. ft, FLOOR 3: 471 sq. ft

Floor plans are intended to give a general indication of the property layout. Sizes and dimensions are estimate, Actual may vary.



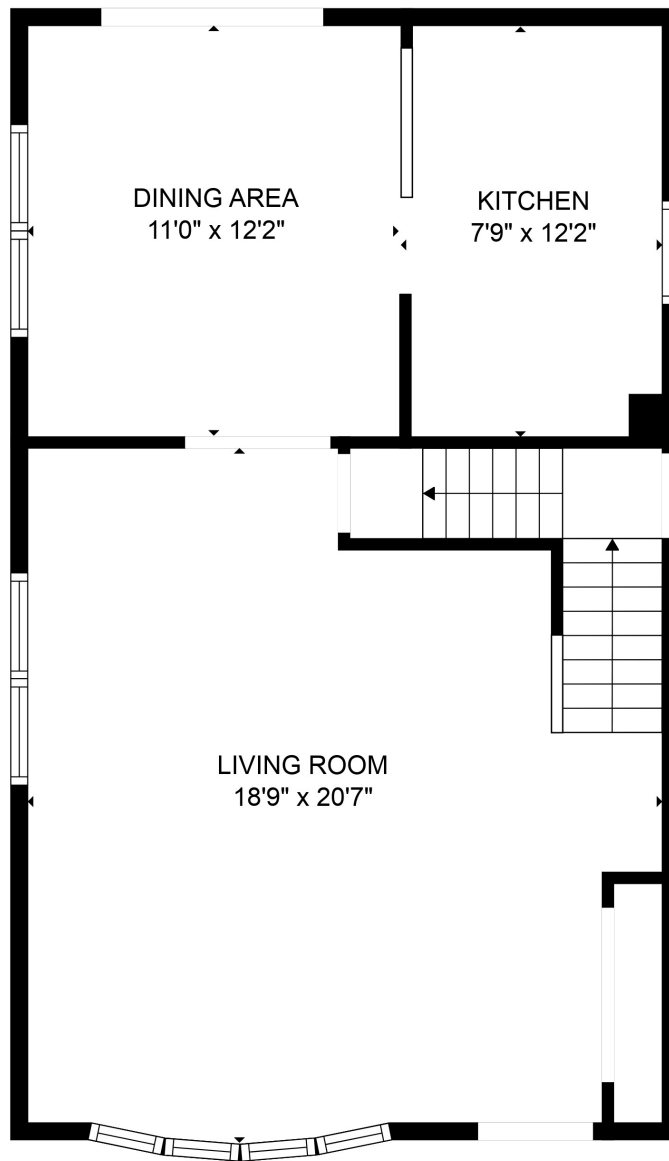


**TOTAL: 1543 sq. ft**

Below Ground: 458 sq. ft, FLOOR 2: 614 sq. ft, FLOOR 3: 471 sq. ft

Floor plans are intended to give a general indication of the property layout. Sizes and dimensions are estimate, Actual may vary.

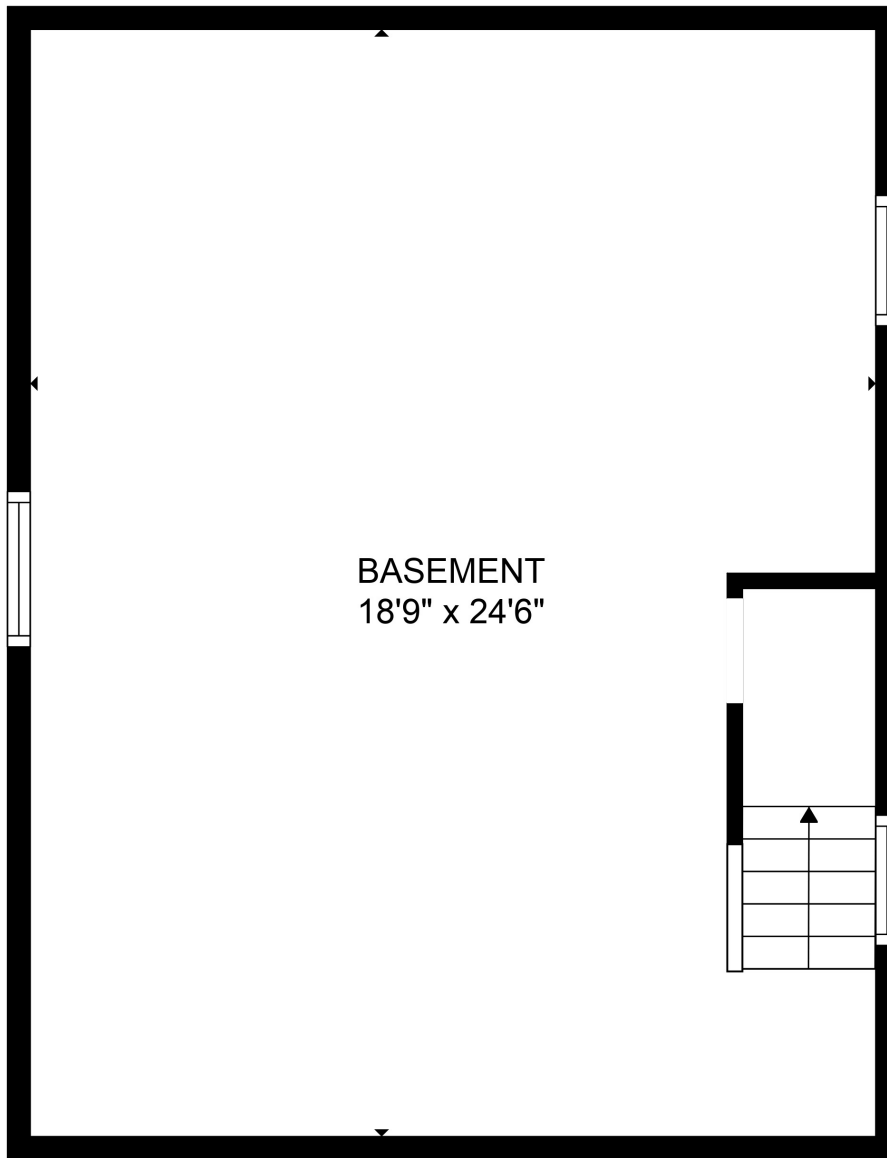




**TOTAL: 1543 sq. ft**  
Below Ground: 458 sq. ft, FLOOR 2: 614 sq. ft, FLOOR 3: 471 sq. ft

Floor plans are intended to give a general indication of the property layout. Sizes and dimensions are estimate, Actual may vary.





BASEMENT  
18'9" x 24'6"

**TOTAL: 1543 sq. ft**  
Below Ground: 458 sq. ft, FLOOR 2: 614 sq. ft, FLOOR 3: 471 sq. ft

Floor plans are intended to give a general indication of the property layout. Sizes and dimensions are estimate, Actual may vary.

