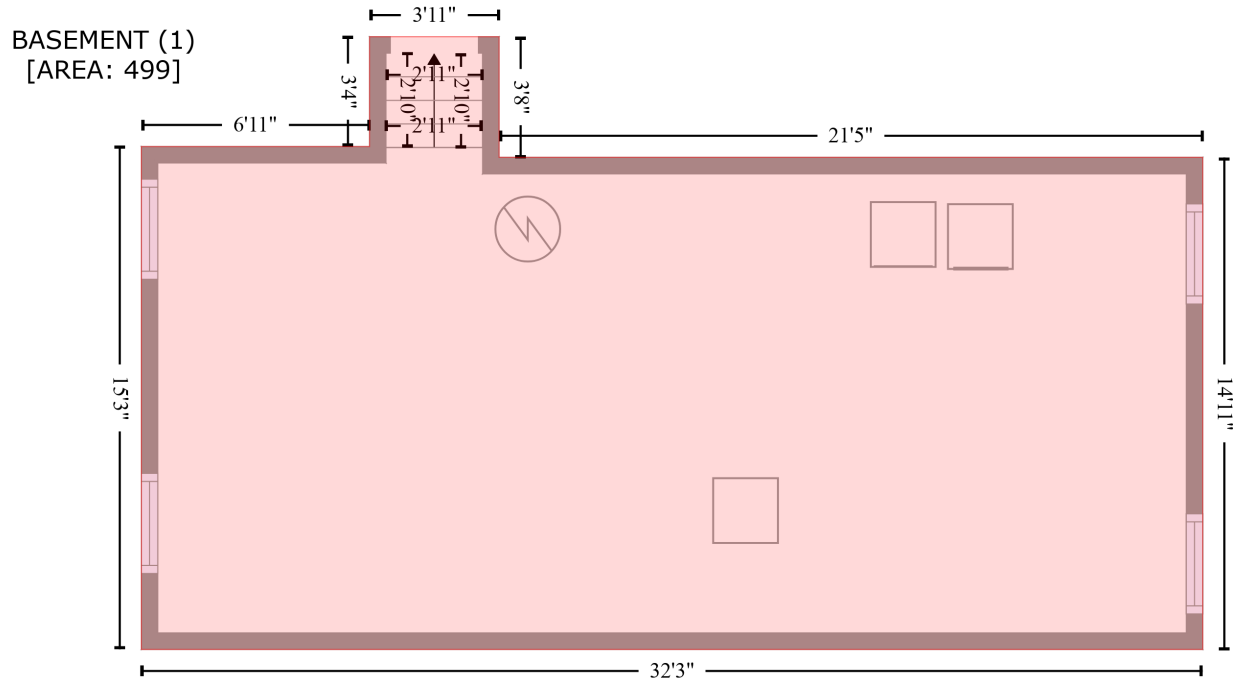


1032 Mary Street, Germantown, Louisville, Jefferson County, Kentucky, United States, 40204

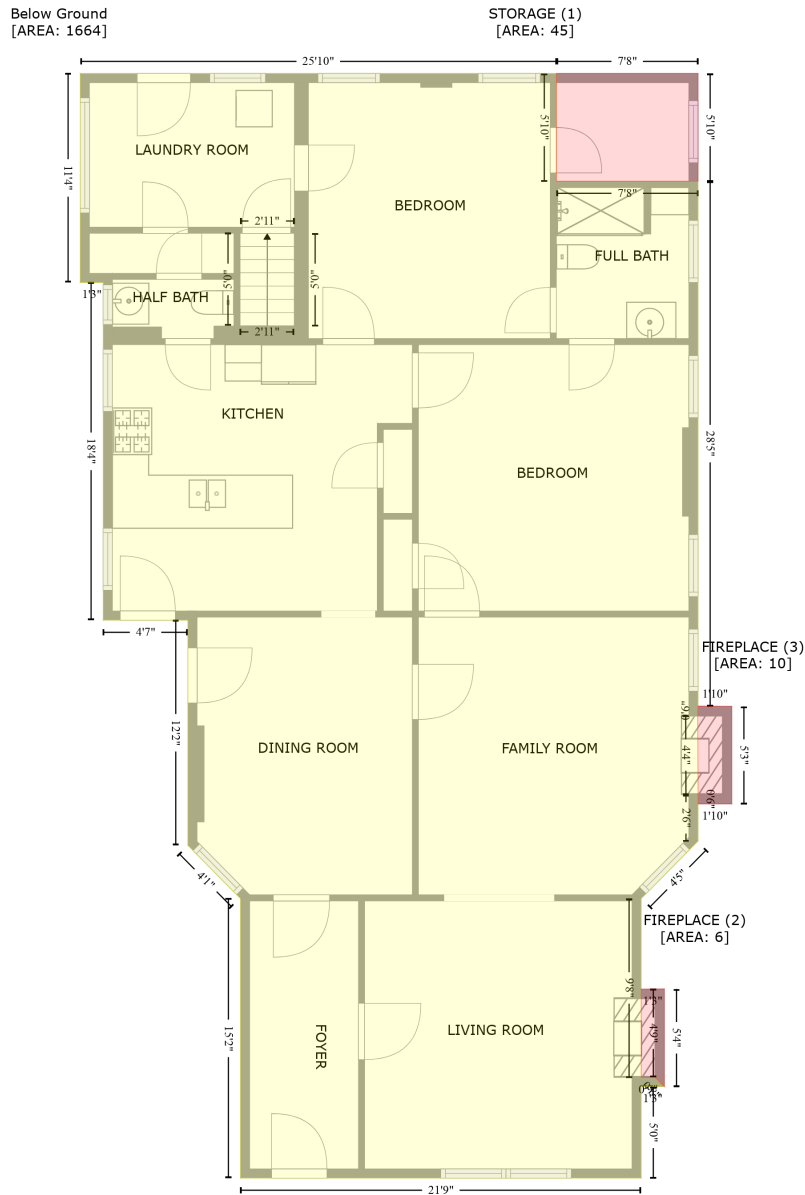
Gross Living Area: 0 sq. ft



Space	Area (sq. ft)	Calculation <small>Coordinate Polygon Area Algorithm using inches</small>
BASEMENT (Non-living area)	499	$-((188.3 + 188.3) * (1030.7 - 1074.7) + (188.3 + 445) * (1074.7 - 1074.7) + (445 + 445) * (1074.7 - 1254) + (445 + 57.8) * (1254 - 1254) + (57.8 + 57.8) * (1254 - 1070.8) + (57.8 + 141) * (1070.8 - 1070.8) + (141 + 141) * (1070.8 - 1030.7) + (141 + 188.3) * (1030.7 - 1030.7)) * 0.5 * 0.00694$

# 1032 Mary Street, Germantown, Louisville, Jefferson County, Kentucky, United States, 40204

Gross Living Area: 0 sq. ft



Space	Area (sq. ft)	Calculation
Below Ground (Living area)	1664	Coordinate Polygon Area Algorithm using inches $-((352.8 + 352.8) * (898.3 - 968.4) + (352.8 + 445) * (968.4 - 968.4) + (445 + 445) * (968.4 - 1309.9) + (445 + 444.8) * (1309.9 - 1315.9) + (444.8 + 445) * (1315.9 - 1367.6) + (445 + 445) * (1367.6 - 1397.7) + (445 + 408) * (1397.7 - 1435.1) + (408 + 408) * (1435.1 - 1551.5) + (408 + 417.1) * (1551.5 - 1551.5) + (417.1 + 423.1) * (1551.5 - 1557.5) + (423.1 + 408) * (1557.5 - 1557.5) + (408 + 408) * (1557.5 - 1617) + (408 + 147.1) * (1617 - 1617) + (147.1 + 147.1) * (1617 - 1435.1) + (147.1 + 112.9) * (1435.1 - 1400.5) + (112.9 + 112.9) * (1400.5 - 1254) + (112.9 + 57.8) * (1254 - 1254) + (57.8 + 57.8) * (1254 - 1034.3) + (57.8 + 42.8) * (1034.3 -$

# 1032 Mary Street, Germantown, Louisville, Jefferson County, Kentucky, United States, 40204

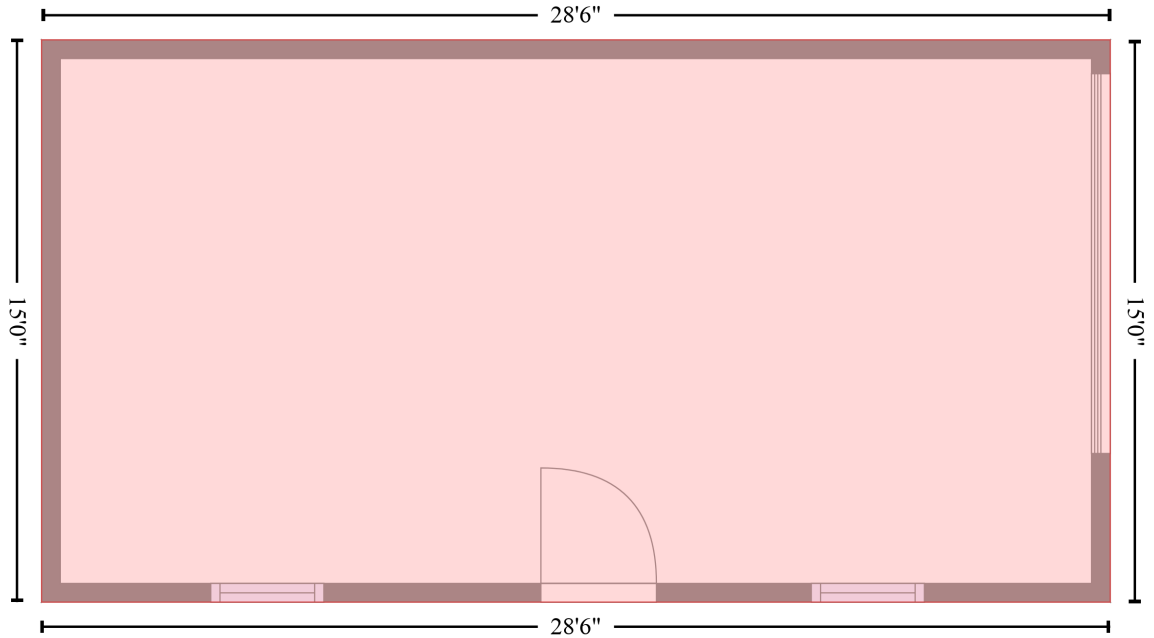
Gross Living Area: 0 sq. ft

Space	Area (sq. ft)	Calculation <small>Coordinate Polygon Area Algorithm using inches</small>
STORAGE (Non-living area)	45	$1034.3 + (42.8 + 42.8) * (1034.3 - 898.3) + (42.8 + 352.8) * (898.3 - 898.3) * 0.5 * 0.00694$ $-((445 + 445) * (898.3 - 968.4) + (445 + 352.8) * (968.4 - 968.4) + (352.8 + 352.8) * (968.4 - 898.3) + (352.8 + 445) * (898.3 - 898.3)) * 0.5 * 0.00694$
FIREPLACE (Non-living area)	6	$-(423.1 + 423.1) * (1493.9 - 1557.5) + (423.1 + 417.1) * (1557.5 - 1551.5) + (417.1 + 408) * (1551.5 - 1551.5) + (408 + 408) * (1551.5 - 1494) + (408 + 423.1) * (1494 - 1493.9)) * 0.5 * 0.00694$
FIREPLACE (Non-living area)	10	$-(445 + 467) * (1309.9 - 1310.1) + (467 + 467) * (1310.1 - 1373.6) + (467 + 445) * (1373.6 - 1373.6) + (445 + 445) * (1373.6 - 1367.6) + (445 + 444.8) * (1367.6 - 1315.9) + (444.8 + 445) * (1315.9 - 1309.9)) * 0.5 * 0.00694$

1032 Mary Street, Germantown, Louisville, Jefferson County, Kentucky, United States, 40204

Gross Living Area: 0 sq. ft

GARAGE (1)  
[AREA: 428]



Space	Area (sq. ft)	Calculation <small>Coordinate Polygon Area Algorithm using inches</small>
GARAGE (Non-living area)	428	$-((472.1 + 472.1) * (-3.6 - 176.5) + (472.1 + 129.8) * (176.5 - 176.5) + (129.8 + 129.8) * (176.5 - 3.6) + (129.8 + 472.1) * (-3.6 - -3.6)) * 0.5 * 0.00694$