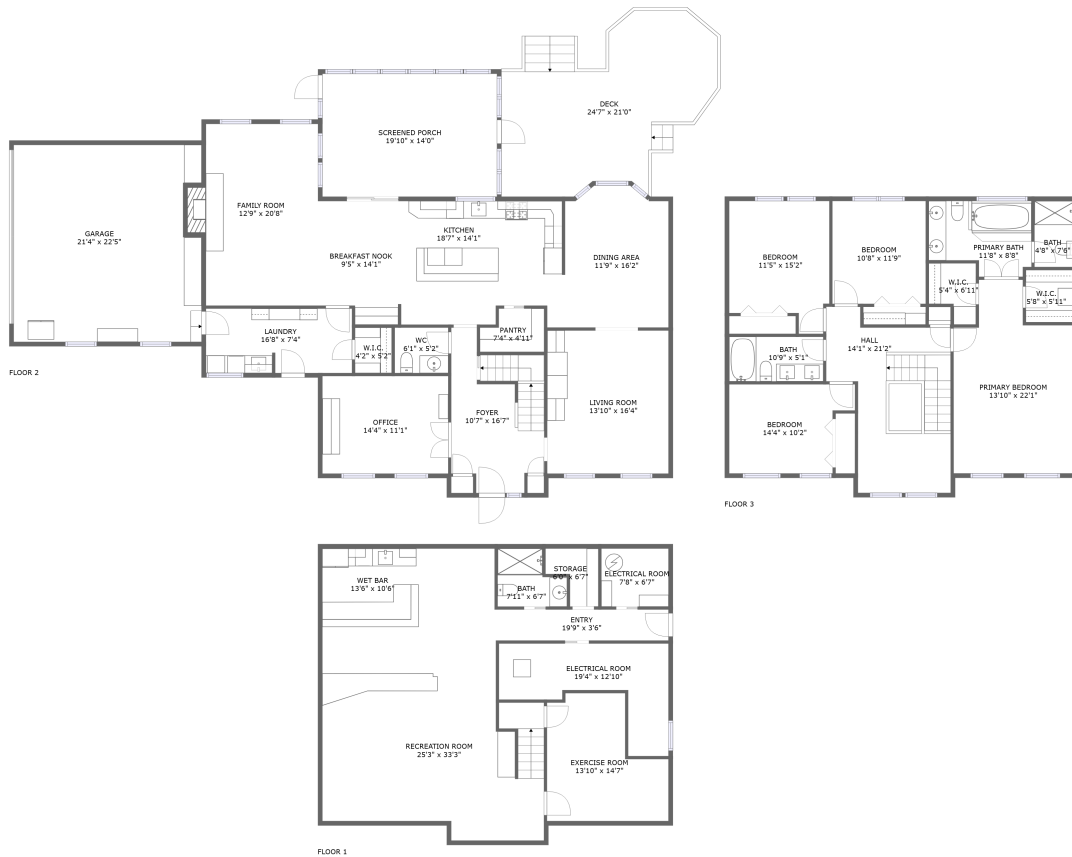



8412 Dasher Court, Hickory Ridge, Gaithersburg, Montgomery County, Maryland, United States, 20882



Property summary


 **1** Garages

 **4** Bedrooms

 **3** Bathrooms

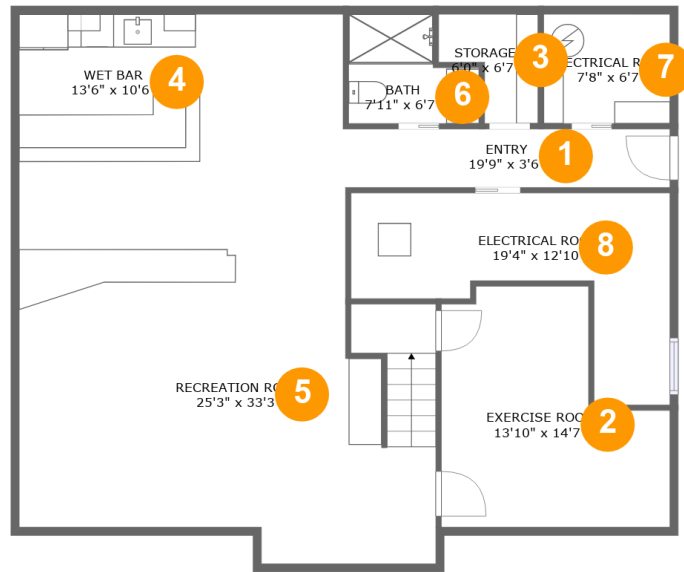
 **1** Half baths

 **3** Floors

 **4,121** Gross living area sqft

 **5,550** Total sqft

8412 Dasher Court, Hickory Ridge, Gaithersburg, Montgomery County, Maryland, United States, 20882



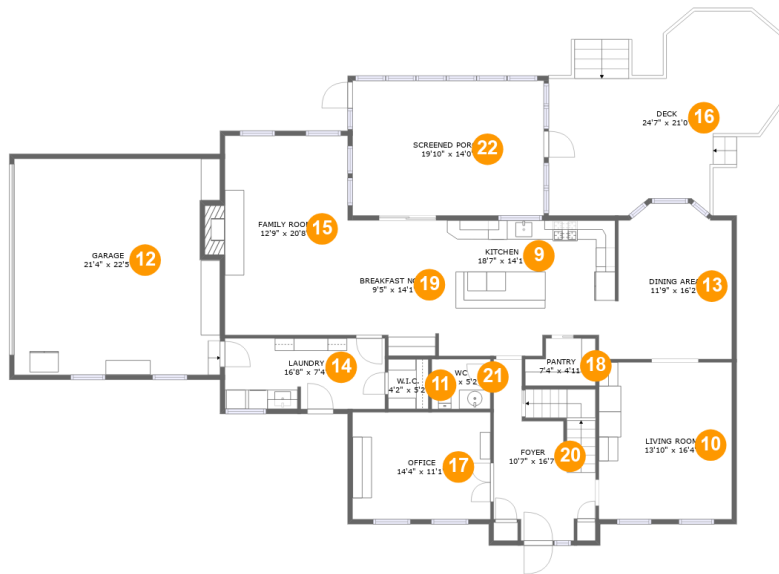
Room dimensions

Floor 1

Total sqft: 1320 Living area: 1076

#		Dimensions	sqft	Counted as living area
1	Entry	19'9" x 3'6"	70 sq. ft	Yes
2	Exercise Room	13'10" x 14'7"	162 sq. ft	Yes
3	Storage	6'0" x 6'7"	30 sq. ft	No
4	Wet Bar	13'6" x 10'6"	142 sq. ft	Yes
5	Recreation Room	25'3" x 33'3"	548 sq. ft	Yes
6	Bath	7'11" x 6'7"	43 sq. ft	Yes
7	Electrical Room	7'8" x 6'7"	51 sq. ft	No
8	Electrical Room	19'4" x 12'10"	145 sq. ft	No

8412 Dasher Court, Hickory Ridge, Gaithersburg, Montgomery County, Maryland, United States, 20882



Room dimensions

Floor 2

Total sqft: 2910 Living area: 1725

#		Dimensions	sqft	Counted as living area
9	Kitchen	18'7" x 14'1"	248 sq. ft	Yes
10	Living Room	13'10" x 16'4"	225 sq. ft	Yes
11	W.I.C.	4'2" x 5'2"	22 sq. ft	Yes
12	Garage	21'4" x 22'5"	467 sq. ft	No
13	Dining Area	11'9" x 16'2"	181 sq. ft	Yes
14	Laundry	16'8" x 7'4"	121 sq. ft	Yes
15	Family Room	12'9" x 20'8"	275 sq. ft	Yes
16	Deck	24'7" x 21'0"	374 sq. ft	No
17	Office	14'4" x 11'1"	159 sq. ft	Yes
18	Pantry	7'4" x 4'11"	32 sq. ft	Yes
19	Breakfast Nook	9'5" x 14'1"	123 sq. ft	Yes

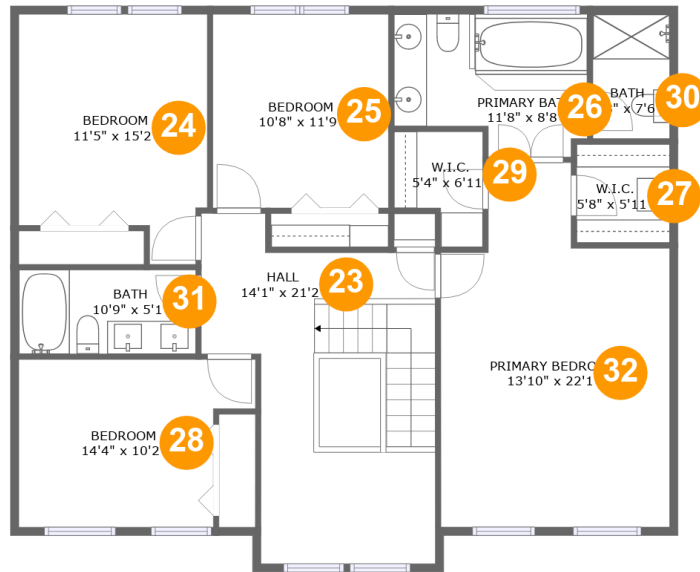
Scan captured on Thu, 27 Mar 2025 14:41:35 GMT

Information is calculated by Cubicasa technology deemed highly reliable but not guaranteed.

**8412 Dasher Court, Hickory Ridge, Gaithersburg,
Montgomery County, Maryland, United States, 20882**

#		Dimensions	sqft	Counted as living area
20	Foyer	10'7" x 16'7"	161 sq. ft	Yes
21	WC	6'1" x 5'2"	32 sq. ft	Yes
22	Screened Porch	19'10" x 14'0"	278 sq. ft	No

8412 Dasher Court, Hickory Ridge, Gaithersburg, Montgomery County, Maryland, United States, 20882



Room dimensions

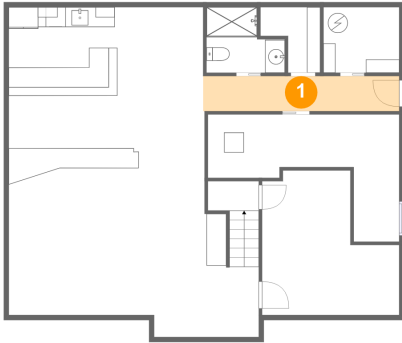
Floor 3

Total sqft: 1320 Living area: 1320

#		Dimensions	sqft	Counted as living area
23	Hall	14'1" x 21'2"	230 sq. ft	Yes
24	Bedroom	11'5" x 15'2"	152 sq. ft	Yes
25	Bedroom	10'8" x 11'9"	125 sq. ft	Yes
26	Primary Bath	11'8" x 8'8"	89 sq. ft	Yes
27	W.I.C.	5'8" x 5'11"	34 sq. ft	Yes
28	Bedroom	14'4" x 10'2"	127 sq. ft	Yes
29	W.I.C.	5'4" x 6'11"	31 sq. ft	Yes
30	Bath	4'8" x 7'6"	35 sq. ft	Yes
31	Bath	10'9" x 5'1"	54 sq. ft	Yes
32	Primary Bedroom	13'10" x 22'1"	259 sq. ft	Yes

8412 Dasher Court, Hickory Ridge, Gaithersburg, Montgomery County, Maryland, United States, 20882

1 Floor 1 - Entry



Dimensions: 19'9" x 3'6"
Area: 70 sq. ft
Counted as living area: Yes

Heated: Yes
Finished: Yes
Enclosed: Yes
Contiguous: Yes
Permitted: Yes
Wet space: No
Addition: No
Conversion: No

2 Floor 1 - Exercise Room

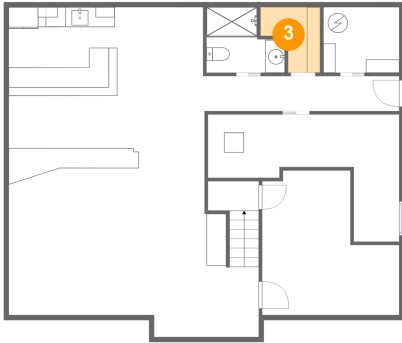


Dimensions: 13'10" x 14'7"
Area: 162 sq. ft
Counted as living area: Yes

Heated: Yes
Finished: Yes
Enclosed: Yes
Contiguous: Yes
Permitted: Yes
Wet space: No
Addition: No
Conversion: No

8412 Dasher Court, Hickory Ridge, Gaithersburg, Montgomery County, Maryland, United States, 20882

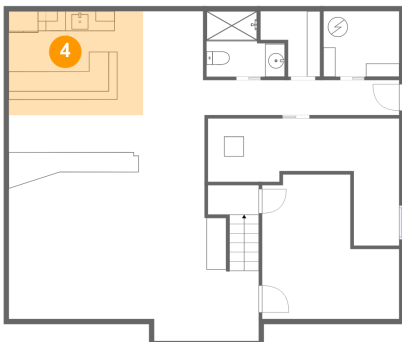
3 Floor 1 - Storage



Dimensions: 6'0" x 6'7"
Area: 30 sq. ft
Counted as living area: No

Heated: No
Finished: No
Enclosed: No
Contiguous: Yes
Permitted: Yes
Wet space: No
Addition: No
Conversion: No

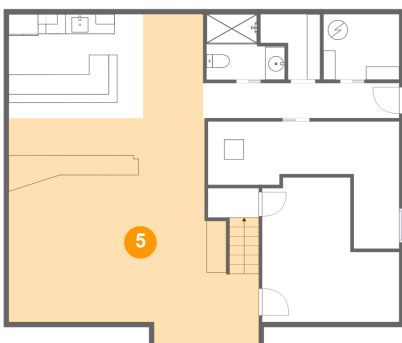
4 Floor 1 - Wet Bar



Dimensions: 13'6" x 10'6"
Area: 142 sq. ft
Counted as living area: Yes

Heated: Yes
Finished: Yes
Enclosed: Yes
Contiguous: Yes
Permitted: Yes
Wet space: No
Addition: No
Conversion: No

5 Floor 1 - Recreation Room

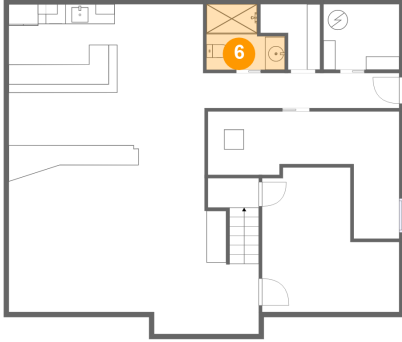


Dimensions: 25'3" x 33'3"
Area: 548 sq. ft
Counted as living area: Yes

Heated: Yes
Finished: Yes
Enclosed: Yes
Contiguous: Yes
Permitted: Yes
Wet space: No
Addition: No
Conversion: No

8412 Dasher Court, Hickory Ridge, Gaithersburg, Montgomery County, Maryland, United States, 20882

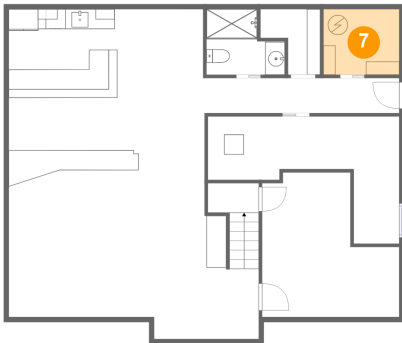
6 Floor 1 - Bath



Dimensions: 7'11" x 6'7"
Area: 43 sq. ft
Counted as living area: Yes

Heated: Yes
Finished: Yes
Enclosed: Yes
Contiguous: Yes
Permitted: Yes
Wet space: Yes
Addition: No
Conversion: No

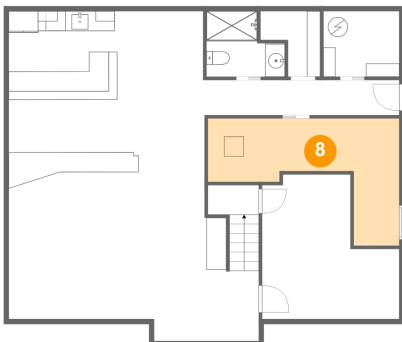
7 Floor 1 - Electrical Room



Dimensions: 7'8" x 6'7"
Area: 51 sq. ft
Counted as living area: No

Heated: No
Finished: No
Enclosed: Yes
Contiguous: Yes
Permitted: Yes
Wet space: No
Addition: No
Conversion: No

8 Floor 1 - Electrical Room

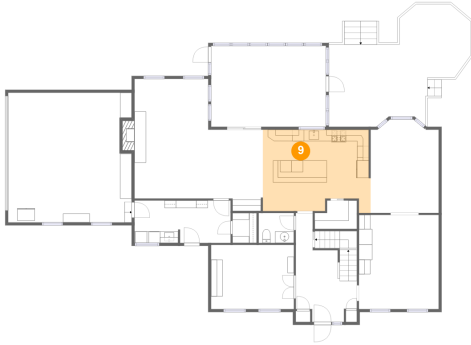


Dimensions: 19'4" x 12'10"
Area: 145 sq. ft
Counted as living area: No

Heated: No
Finished: No
Enclosed: Yes
Contiguous: Yes
Permitted: Yes
Wet space: No
Addition: No
Conversion: No

8412 Dasher Court, Hickory Ridge, Gaithersburg, Montgomery County, Maryland, United States, 20882

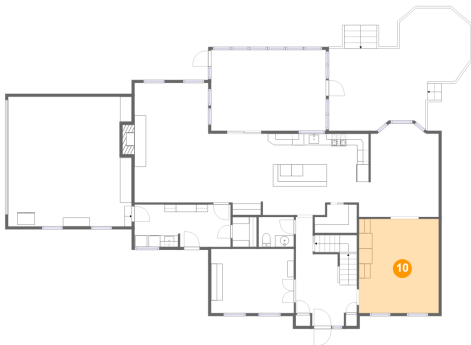
9 Floor 2 - Kitchen



Dimensions: 18'7" x 14'1"
Area: 248 sq. ft
Counted as living area: Yes

Heated: Yes
Finished: Yes
Enclosed: Yes
Contiguous: Yes
Permitted: Yes
Wet space: No
Addition: No
Conversion: No

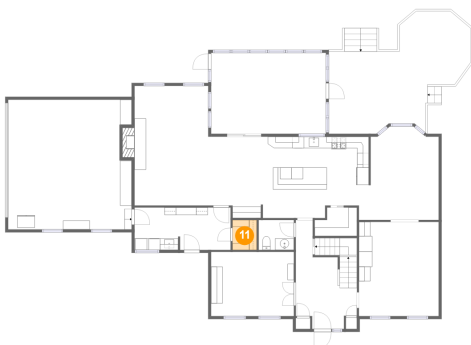
10 Floor 2 - Living Room



Dimensions: 13'10" x 16'4"
Area: 225 sq. ft
Counted as living area: Yes

Heated: Yes
Finished: Yes
Enclosed: Yes
Contiguous: Yes
Permitted: Yes
Wet space: No
Addition: No
Conversion: No

11 Floor 2 - W.I.C.

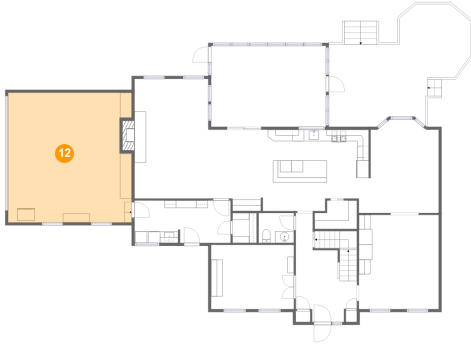


Dimensions: 4'2" x 5'2"
Area: 22 sq. ft
Counted as living area: Yes

Heated: Yes
Finished: Yes
Enclosed: Yes
Contiguous: Yes
Permitted: Yes
Wet space: No
Addition: No
Conversion: No

8412 Dasher Court, Hickory Ridge, Gaithersburg, Montgomery County, Maryland, United States, 20882

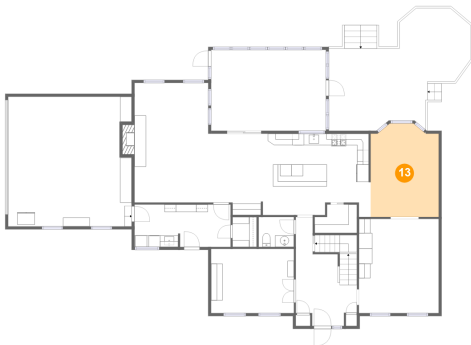
12 Floor 2 - Garage



Dimensions: 21'4" x 22'5"
Area: 467 sq. ft
Counted as living area: No

Heated: No
Finished: No
Enclosed: Yes
Contiguous: Yes
Permitted: Yes
Wet space: No
Addition: No
Conversion: No

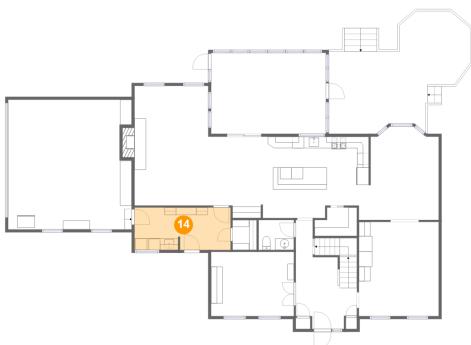
13 Floor 2 - Dining Area



Dimensions: 11'9" x 16'2"
Area: 181 sq. ft
Counted as living area: Yes

Heated: Yes
Finished: Yes
Enclosed: Yes
Contiguous: Yes
Permitted: Yes
Wet space: No
Addition: No
Conversion: No

14 Floor 2 - Laundry

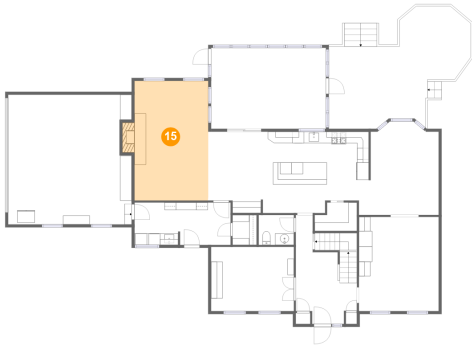


Dimensions: 16'8" x 7'4"
Area: 121 sq. ft
Counted as living area: Yes

Heated: Yes
Finished: Yes
Enclosed: Yes
Contiguous: Yes
Permitted: Yes
Wet space: No
Addition: No
Conversion: No

8412 Dasher Court, Hickory Ridge, Gaithersburg, Montgomery County, Maryland, United States, 20882

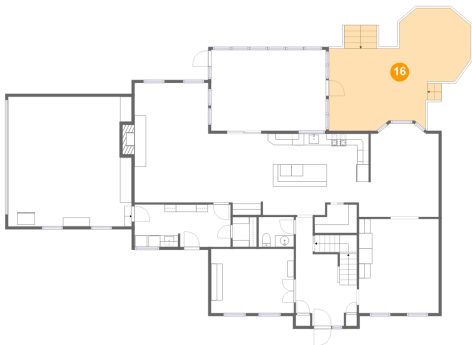
15 Floor 2 - Family Room



Dimensions: 12'9" x 20'8"
Area: 275 sq. ft
Counted as living area: Yes

Heated: Yes
Finished: Yes
Enclosed: Yes
Contiguous: Yes
Permitted: Yes
Wet space: No
Addition: No
Conversion: No

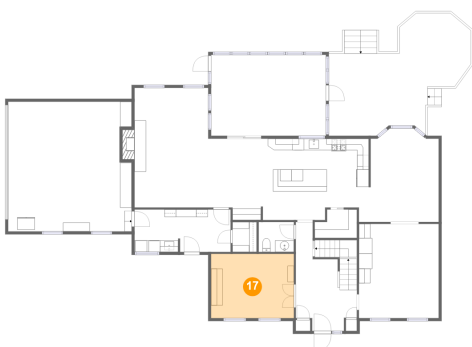
16 Floor 2 - Deck



Dimensions: 24'7" x 21'0"
Area: 374 sq. ft
Counted as living area: No

Heated: No
Finished: Yes
Enclosed: No
Contiguous: Yes
Permitted: Yes
Wet space: No
Addition: No
Conversion: No

17 Floor 2 - Office

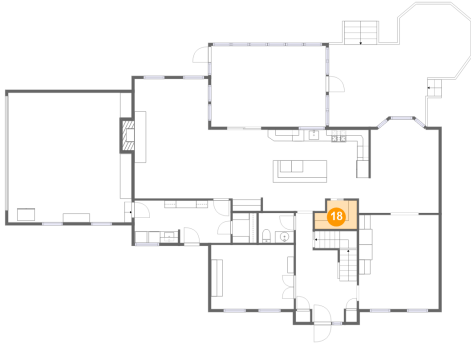


Dimensions: 14'4" x 11'1"
Area: 159 sq. ft
Counted as living area: Yes

Heated: Yes
Finished: Yes
Enclosed: Yes
Contiguous: Yes
Permitted: Yes
Wet space: No
Addition: No
Conversion: No

8412 Dasher Court, Hickory Ridge, Gaithersburg, Montgomery County, Maryland, United States, 20882

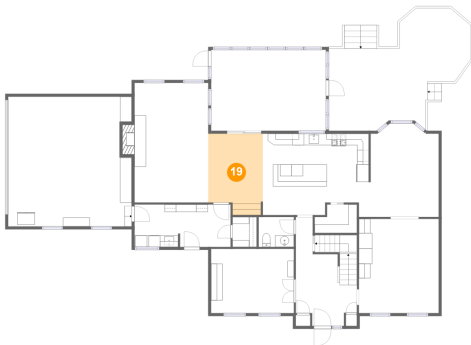
18 Floor 2 - Pantry



Dimensions: 7'4" x 4'11"
Area: 32 sq. ft
Counted as living area: Yes

Heated: Yes
Finished: Yes
Enclosed: Yes
Contiguous: Yes
Permitted: Yes
Wet space: No
Addition: No
Conversion: No

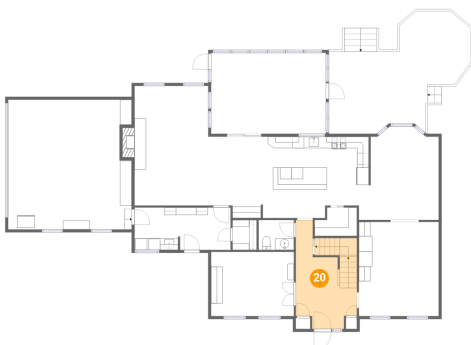
19 Floor 2 - Breakfast Nook



Dimensions: 9'5" x 14'1"
Area: 123 sq. ft
Counted as living area: Yes

Heated: Yes
Finished: Yes
Enclosed: Yes
Contiguous: Yes
Permitted: Yes
Wet space: No
Addition: No
Conversion: No

20 Floor 2 - Foyer

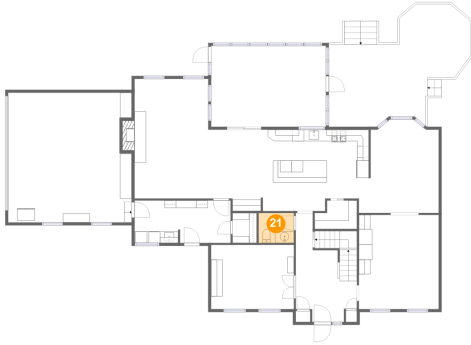


Dimensions: 10'7" x 16'7"
Area: 161 sq. ft
Counted as living area: Yes

Heated: Yes
Finished: Yes
Enclosed: Yes
Contiguous: Yes
Permitted: Yes
Wet space: No
Addition: No
Conversion: No

8412 Dasher Court, Hickory Ridge, Gaithersburg, Montgomery County, Maryland, United States, 20882

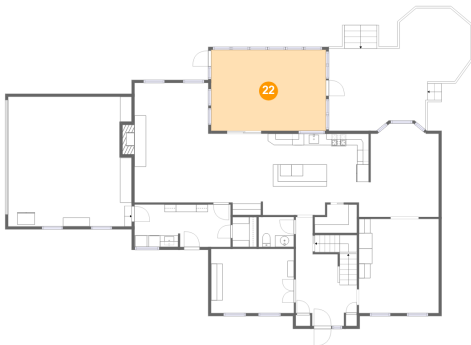
21 Floor 2 - WC



Dimensions: 6'1" x 5'2"
Area: 32 sq. ft
Counted as living area: Yes

Heated: Yes
Finished: Yes
Enclosed: Yes
Contiguous: Yes
Permitted: Yes
Wet space: Yes
Addition: No
Conversion: No

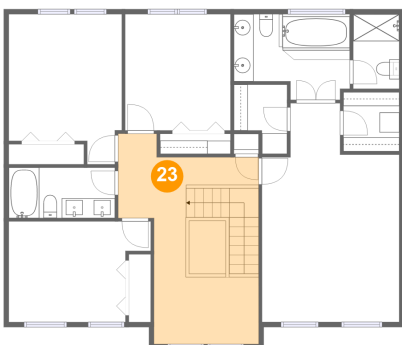
22 Floor 2 - Screened Porch



Dimensions: 19'10" x 14'0"
Area: 278 sq. ft
Counted as living area: No

Heated: No
Finished: Yes
Enclosed: No
Contiguous: Yes
Permitted: Yes
Wet space: No
Addition: No
Conversion: No

23 Floor 3 - Hall

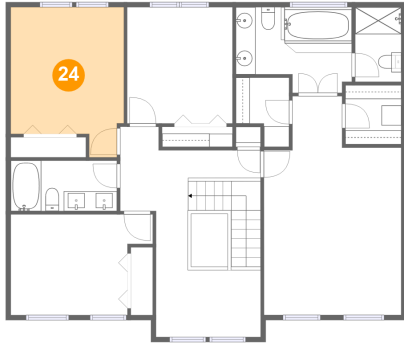


Dimensions: 14'1" x 21'2"
Area: 230 sq. ft
Counted as living area: Yes

Heated: Yes
Finished: Yes
Enclosed: Yes
Contiguous: Yes
Permitted: Yes
Wet space: No
Addition: No
Conversion: No

8412 Dasher Court, Hickory Ridge, Gaithersburg, Montgomery County, Maryland, United States, 20882

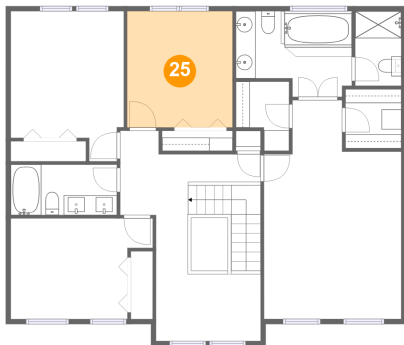
24 Floor 3 - Bedroom



Dimensions: 11'5" x 15'2"
Area: 152 sq. ft
Counted as living area: Yes

Heated: Yes
Finished: Yes
Enclosed: Yes
Contiguous: Yes
Permitted: Yes
Wet space: No
Addition: No
Conversion: No

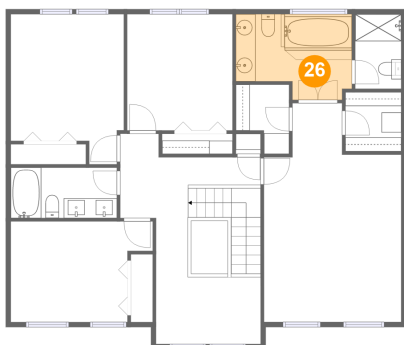
25 Floor 3 - Bedroom



Dimensions: 10'8" x 11'9"
Area: 125 sq. ft
Counted as living area: Yes

Heated: Yes
Finished: Yes
Enclosed: Yes
Contiguous: Yes
Permitted: Yes
Wet space: No
Addition: No
Conversion: No

26 Floor 3 - Primary Bath

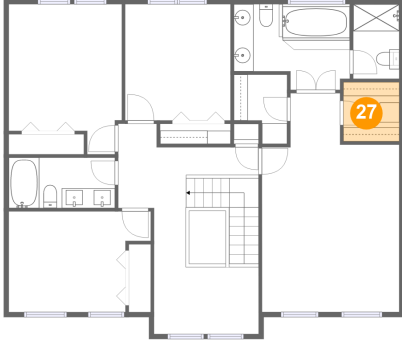


Dimensions: 11'8" x 8'8"
Area: 89 sq. ft
Counted as living area: Yes

Heated: Yes
Finished: Yes
Enclosed: Yes
Contiguous: Yes
Permitted: Yes
Wet space: Yes
Addition: No
Conversion: No

**8412 Dasher Court, Hickory Ridge, Gaithersburg,
Montgomery County, Maryland, United States, 20882**

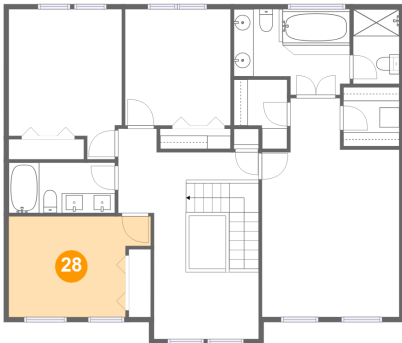
27 Floor 3 - W.I.C.



Dimensions: 5'8" x 5'11"
Area: 34 sq. ft
Counted as living area: Yes

Heated: Yes
Finished: Yes
Enclosed: Yes
Contiguous: Yes
Permitted: Yes
Wet space: No
Addition: No
Conversion: No

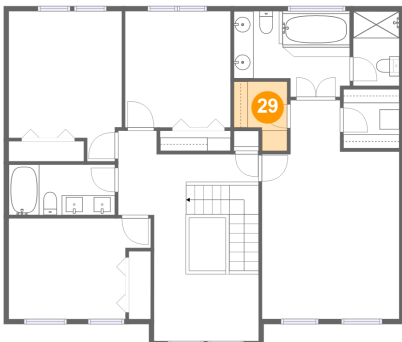
28 Floor 3 - Bedroom



Dimensions: 14'4" x 10'2"
Area: 127 sq. ft
Counted as living area: Yes

Heated: Yes
Finished: Yes
Enclosed: Yes
Contiguous: Yes
Permitted: Yes
Wet space: No
Addition: No
Conversion: No

29 Floor 3 - W.I.C.

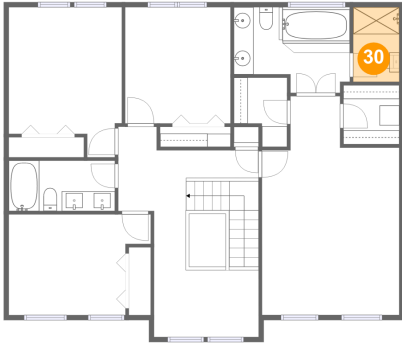


Dimensions: 5'4" x 6'11"
Area: 31 sq. ft
Counted as living area: Yes

Heated: Yes
Finished: Yes
Enclosed: Yes
Contiguous: Yes
Permitted: Yes
Wet space: No
Addition: No
Conversion: No

8412 Dasher Court, Hickory Ridge, Gaithersburg, Montgomery County, Maryland, United States, 20882

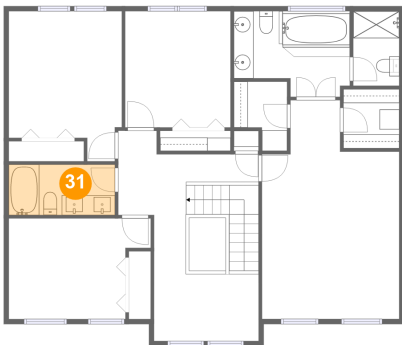
30 Floor 3 - Bath



Dimensions: 4'8" x 7'6"
Area: 35 sq. ft
Counted as living area: Yes

Heated: Yes
Finished: Yes
Enclosed: Yes
Contiguous: Yes
Permitted: Yes
Wet space: Yes
Addition: No
Conversion: No

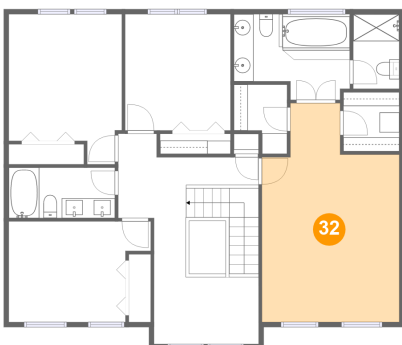
31 Floor 3 - Bath



Dimensions: 10'9" x 5'1"
Area: 54 sq. ft
Counted as living area: Yes

Heated: Yes
Finished: Yes
Enclosed: Yes
Contiguous: Yes
Permitted: Yes
Wet space: Yes
Addition: No
Conversion: No

32 Floor 3 - Primary Bedroom



Dimensions: 13'10" x 22'1"
Area: 259 sq. ft
Counted as living area: Yes

Heated: Yes
Finished: Yes
Enclosed: Yes
Contiguous: Yes
Permitted: Yes
Wet space: No
Addition: No
Conversion: No