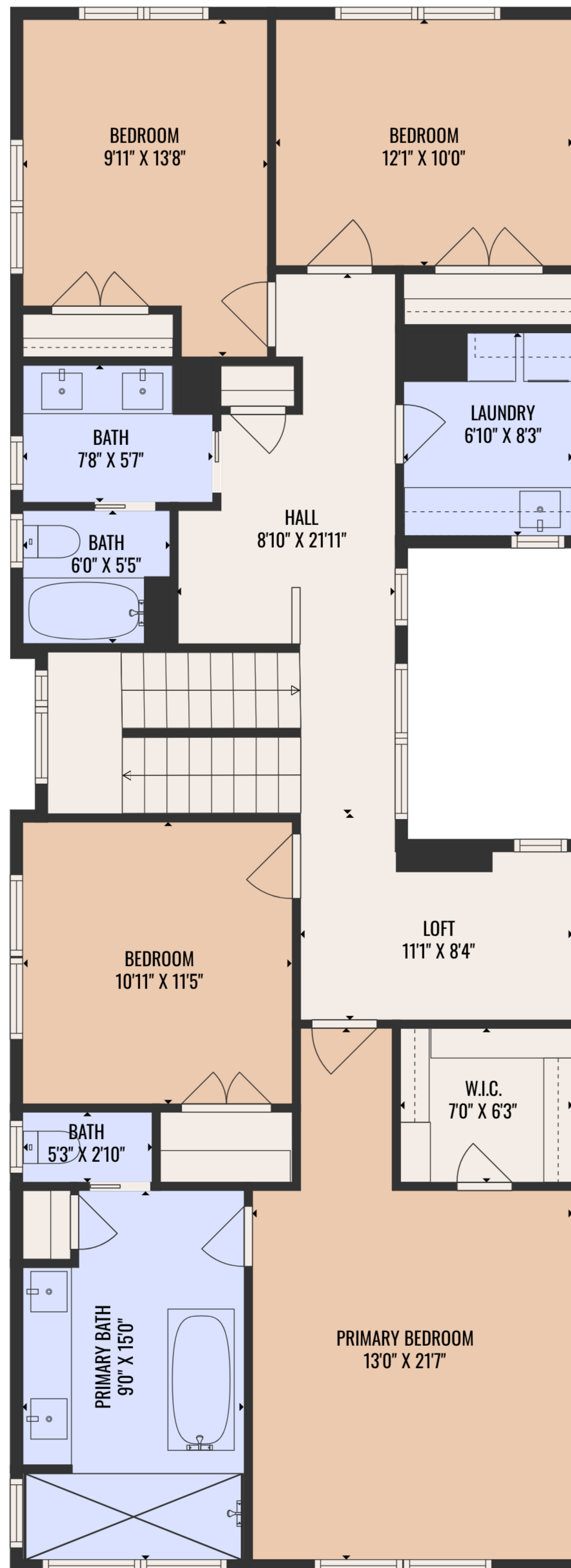




### Estimated areas

GLA FLOOR 1: 858 sq. ft, excluded 810 sq. ft  
 GLA FLOOR 2: 1391 sq. ft, excluded 0 sq. ft  
 GLA FLOOR 3: 348 sq. ft, excluded 215 sq. ft  
 Total GLA 2597 sq. ft, total scanned area 3622 sq. ft

COMPLIES WITH ANSI STANDARDS. APPROXIMATE DIMENSIONS. DRAWING NOT TO SCALE.



**Estimated areas**

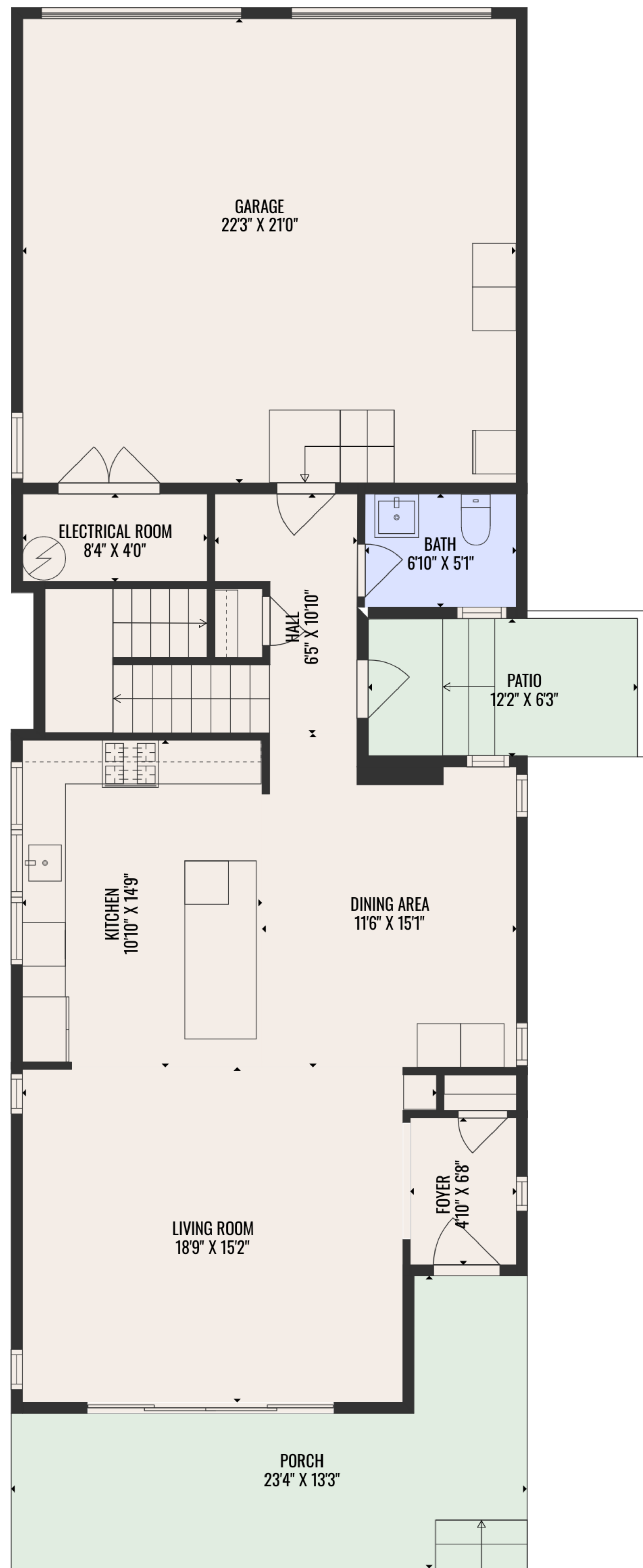
GLA FLOOR 1: 858 sq. ft, excluded 810 sq. ft  
 GLA FLOOR 2: 1391 sq. ft, excluded 0 sq. ft  
 GLA FLOOR 3: 348 sq. ft, excluded 215 sq. ft  
 Total GLA 2597 sq. ft, total scanned area 3622 sq. ft



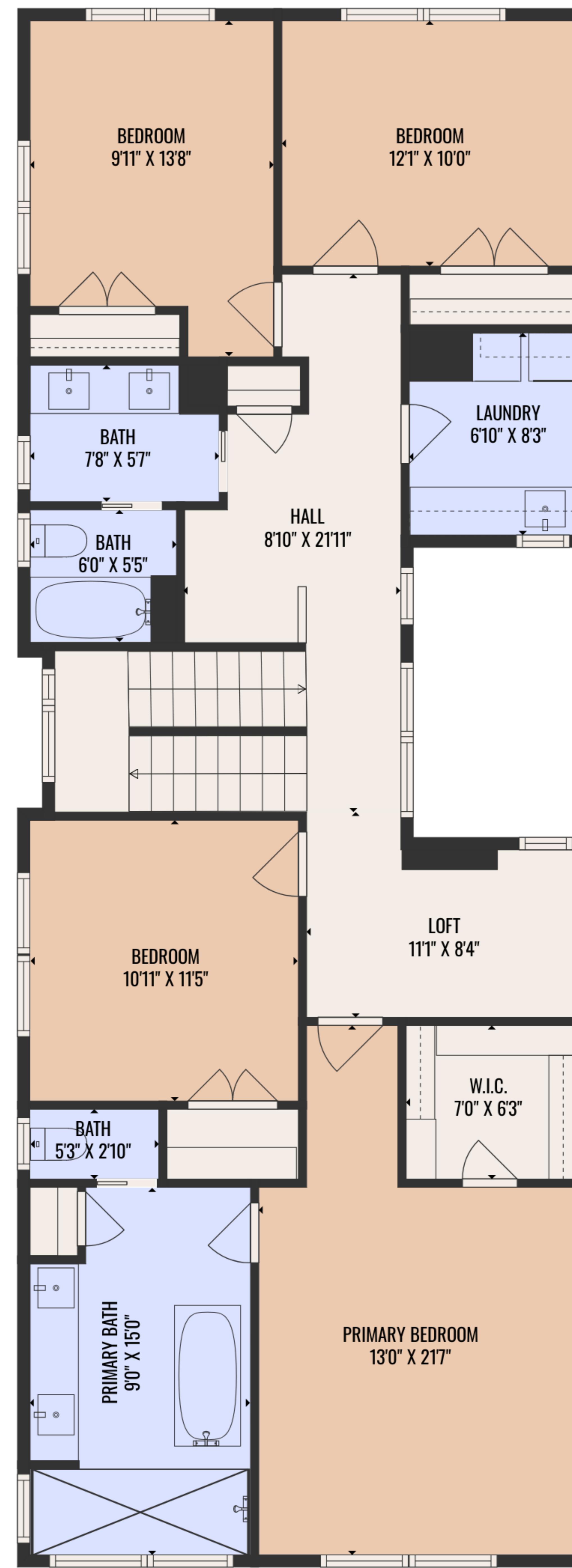
### Estimated areas

GLA FLOOR 1: 858 sq. ft, excluded 810 sq. ft  
GLA FLOOR 2: 1391 sq. ft, excluded 0 sq. ft  
GLA FLOOR 3: 348 sq. ft, excluded 215 sq. ft  
Total GLA 2597 sq. ft, total scanned area 3622 sq. ft

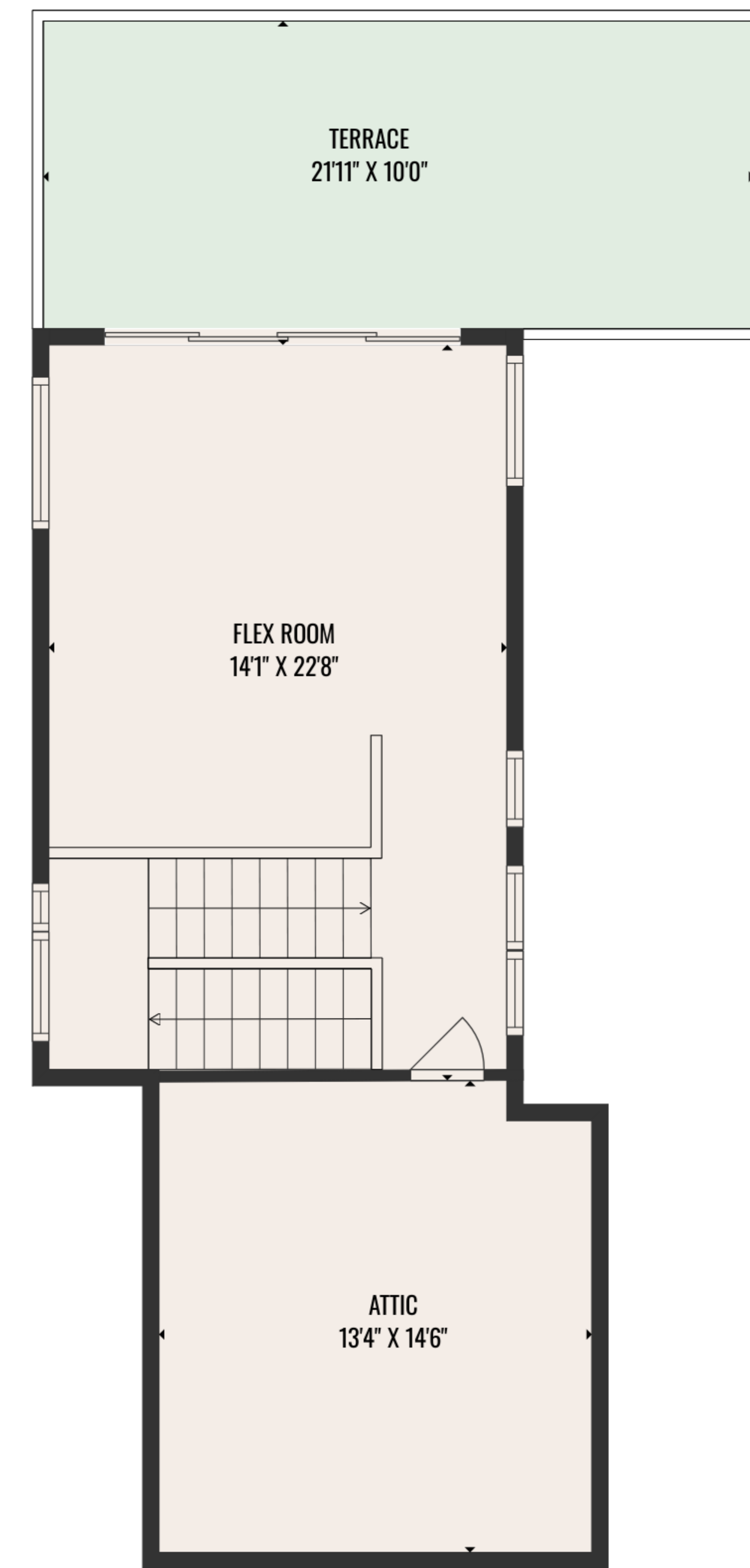




FLOOR 1



FLOOR 2



FLOOR 3

### Estimated areas

GLA FLOOR 1: 858 sq. ft, excluded 810 sq. ft  
 GLA FLOOR 2: 1391 sq. ft, excluded 0 sq. ft  
 GLA FLOOR 3: 348 sq. ft, excluded 215 sq. ft  
 Total GLA 2597 sq. ft, total scanned area 3622 sq. ft