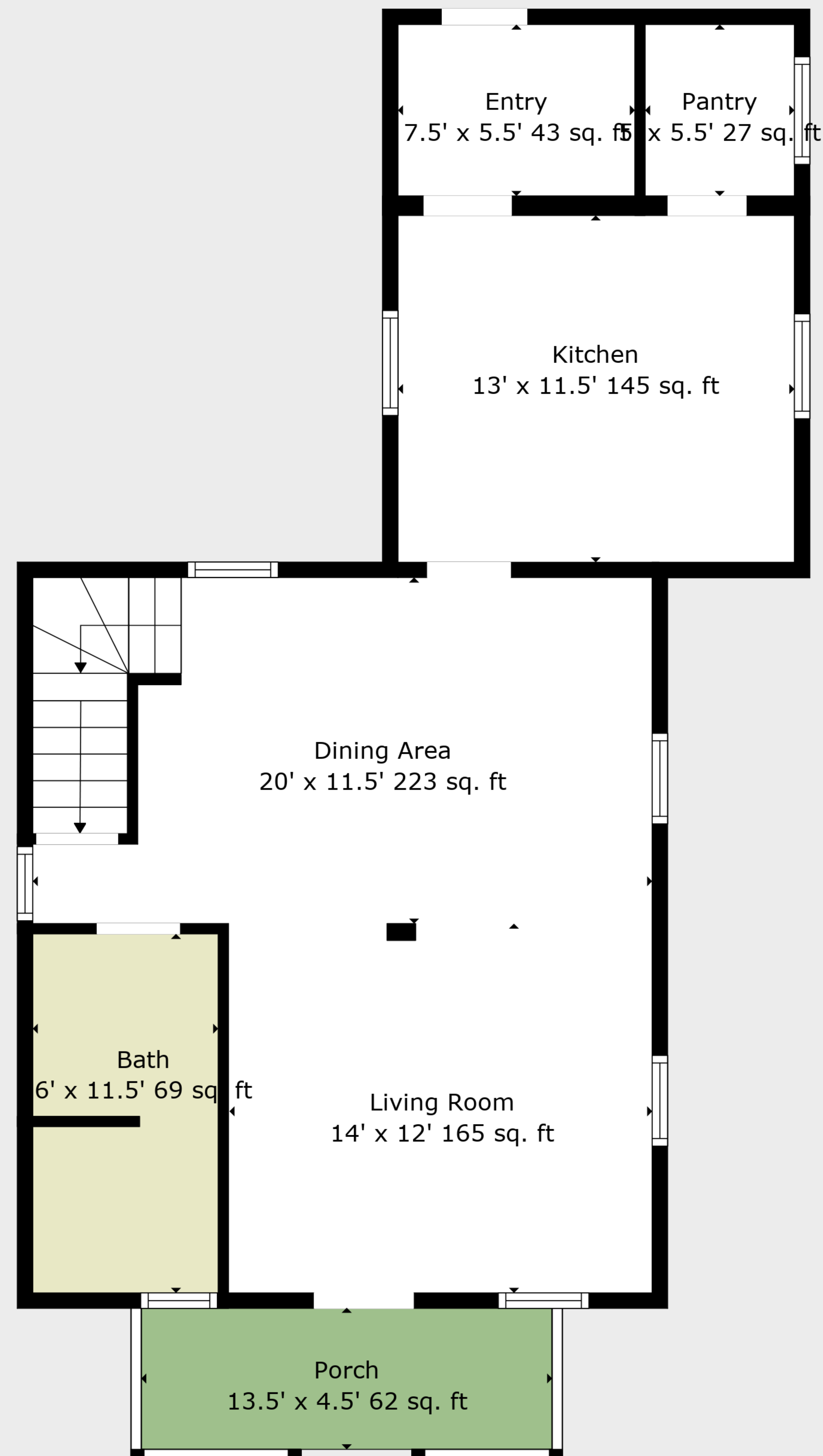


Basement
18' x 21' 469 sq. ft

TOTAL: 1124 sq. ft

BELOW GROUND: 0 sq. ft, FLOOR 2: 655 sq. ft, FLOOR 3: 469 sq. ft
EXCLUDED AREAS: BASEMENT: 469 sq. ft, ENTRY: 43 sq. ft, PORCH: 62 sq. ft,
WALLS: 154 sq. ft

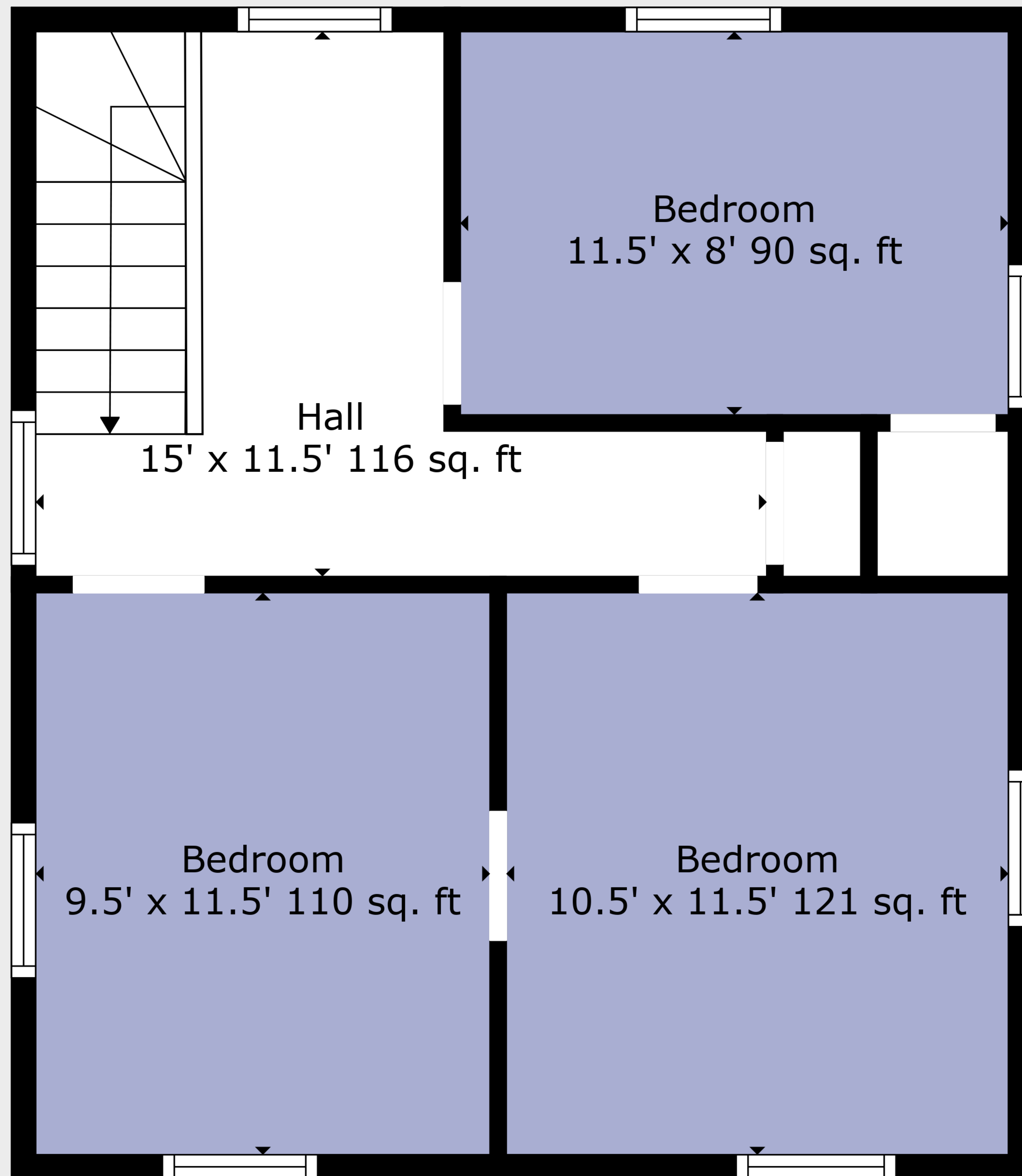




TOTAL: 1124 sq. ft

BELOW GROUND: 0 sq. ft, FLOOR 2: 655 sq. ft, FLOOR 3: 469 sq. ft
EXCLUDED AREAS: BASEMENT: 469 sq. ft, ENTRY: 43 sq. ft, PORCH: 62 sq. ft,
WALLS: 154 sq. ft

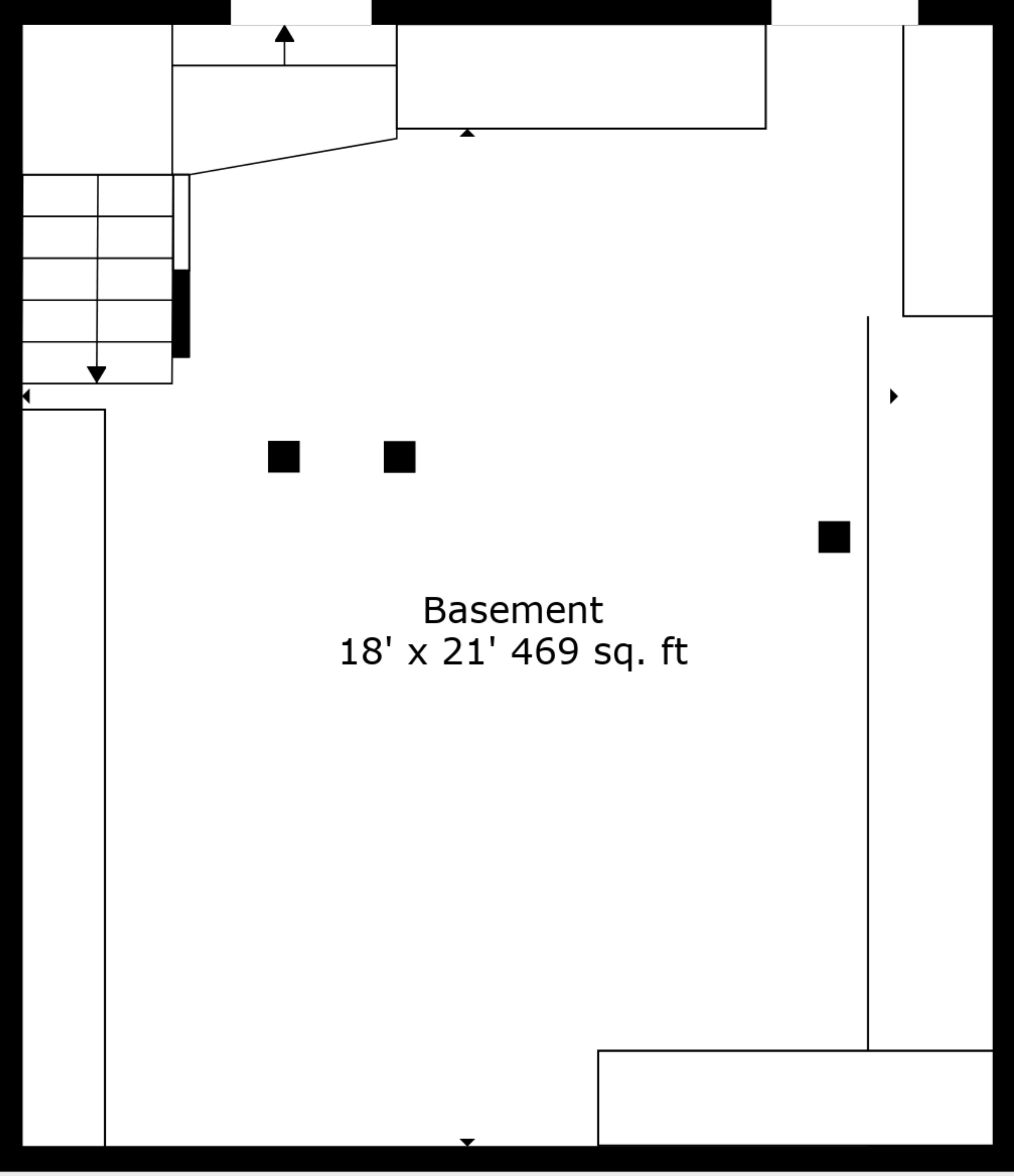




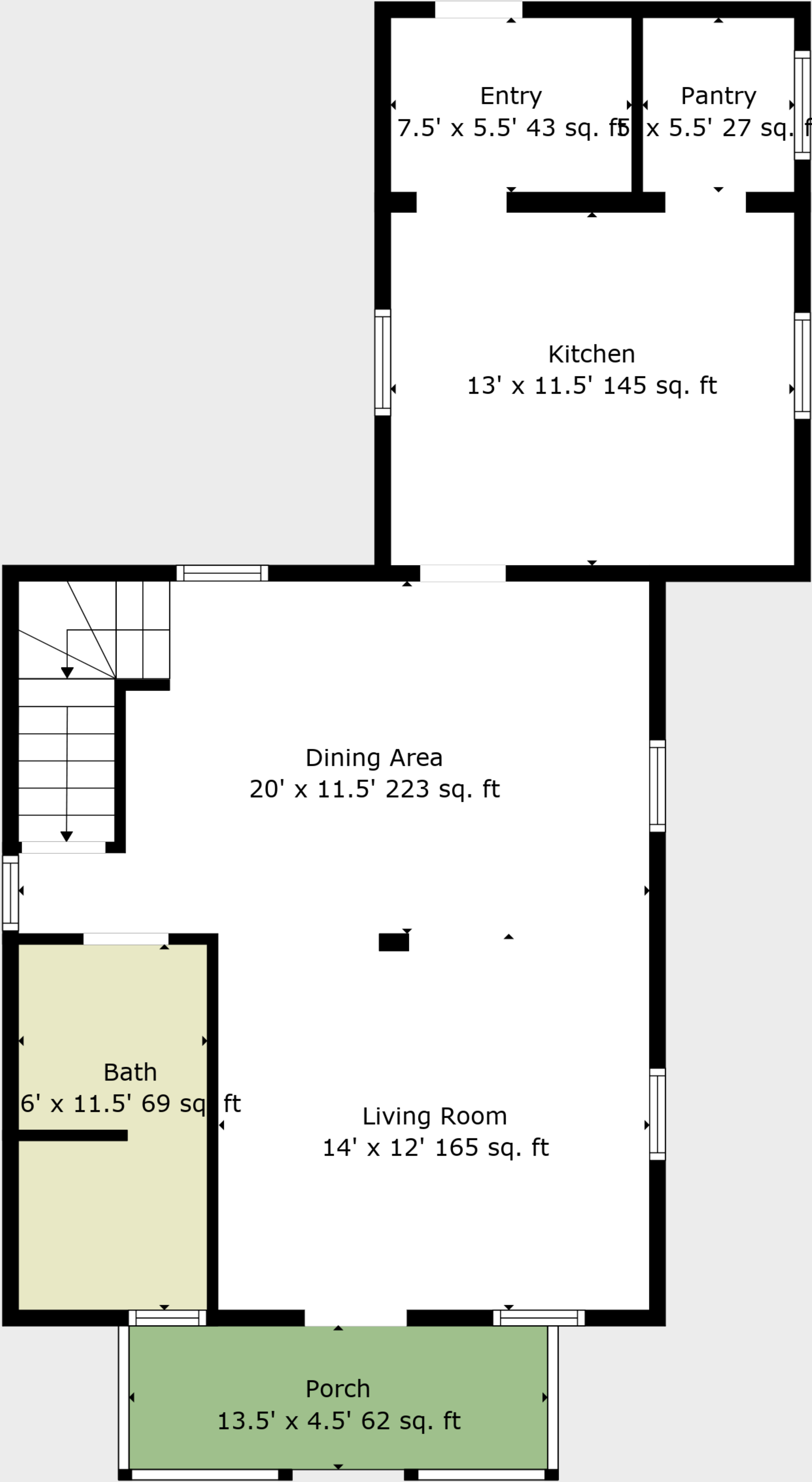
TOTAL: 1124 sq. ft

BELOW GROUND: 0 sq. ft, FLOOR 2: 655 sq. ft, FLOOR 3: 469 sq. ft
EXCLUDED AREAS: BASEMENT: 469 sq. ft, ENTRY: 43 sq. ft, PORCH: 62 sq. ft,
WALLS: 154 sq. ft

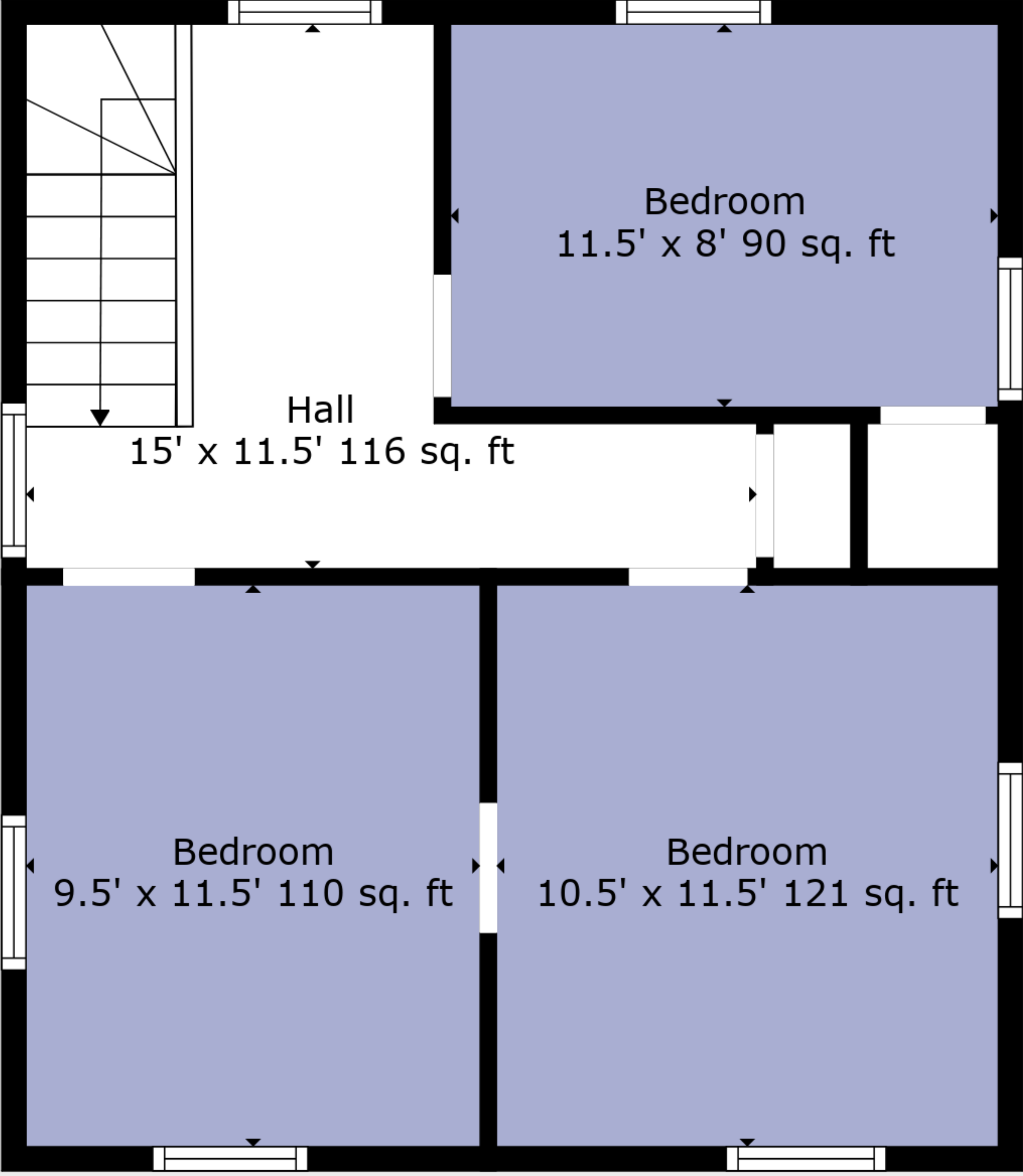




Floor 1



Floor 2



Floor 3

