

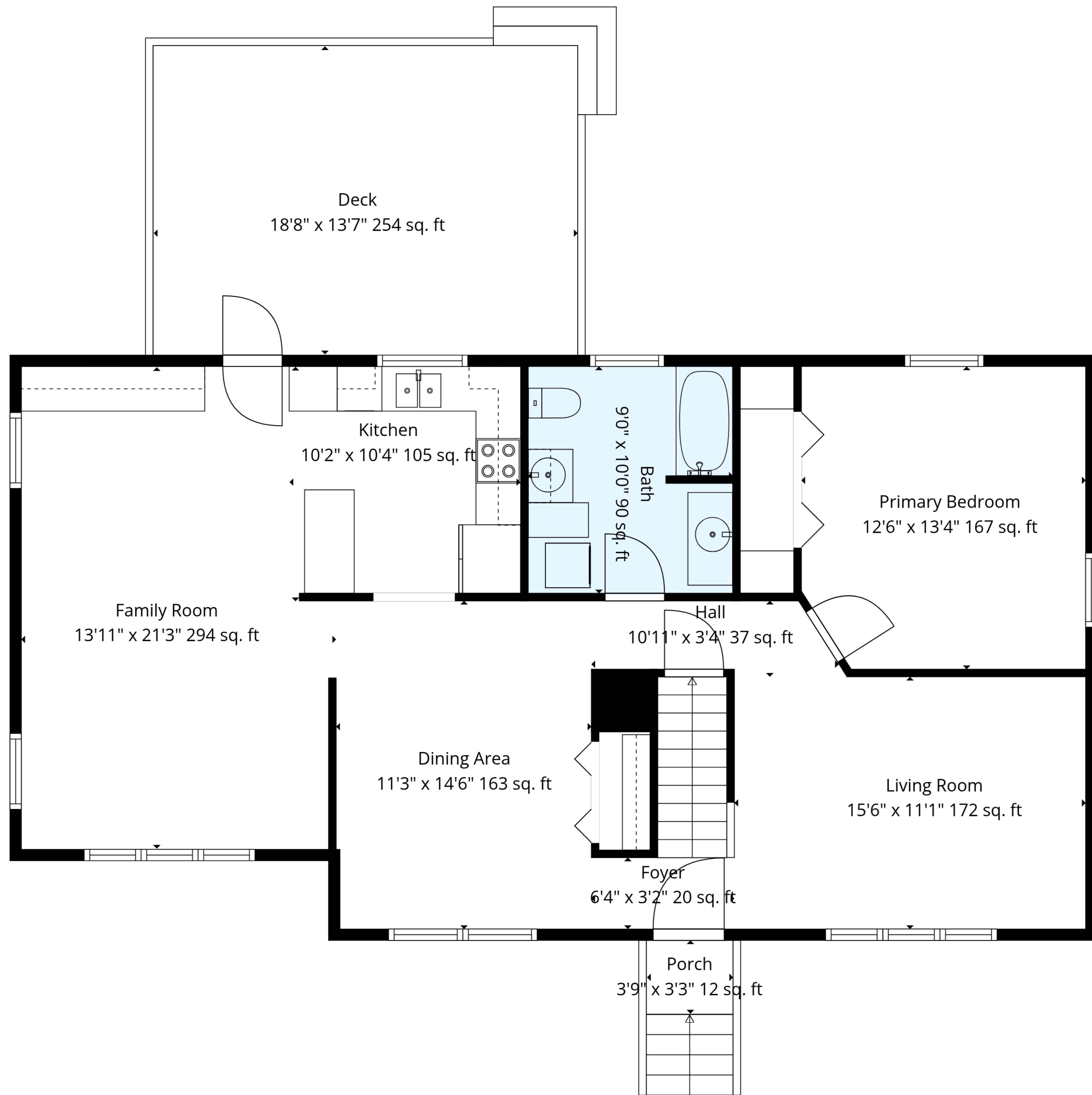
Garage
20'6" x 23'8" 485 sq. ft

Basement
25'11" x 23'9" 614 sq. ft

Hall
12'6" x 6'10" 85 sq. ft

TOTAL: 1741 sq. ft
Basement: 0 sq. ft, 1st floor: 1114 sq. ft, 2nd floor: 627 sq. ft
EXCLUDED AREAS: GARAGE: 438 sq. ft, BASEMENT: 536 sq. ft, HALL: 78 sq. ft,
DECK: 255 sq. ft, PORCH: 12 sq. ft, LOW CEILING: 38 sq. ft,
WALLS: 214 sq. ft





TOTAL: 1741 sq. ft

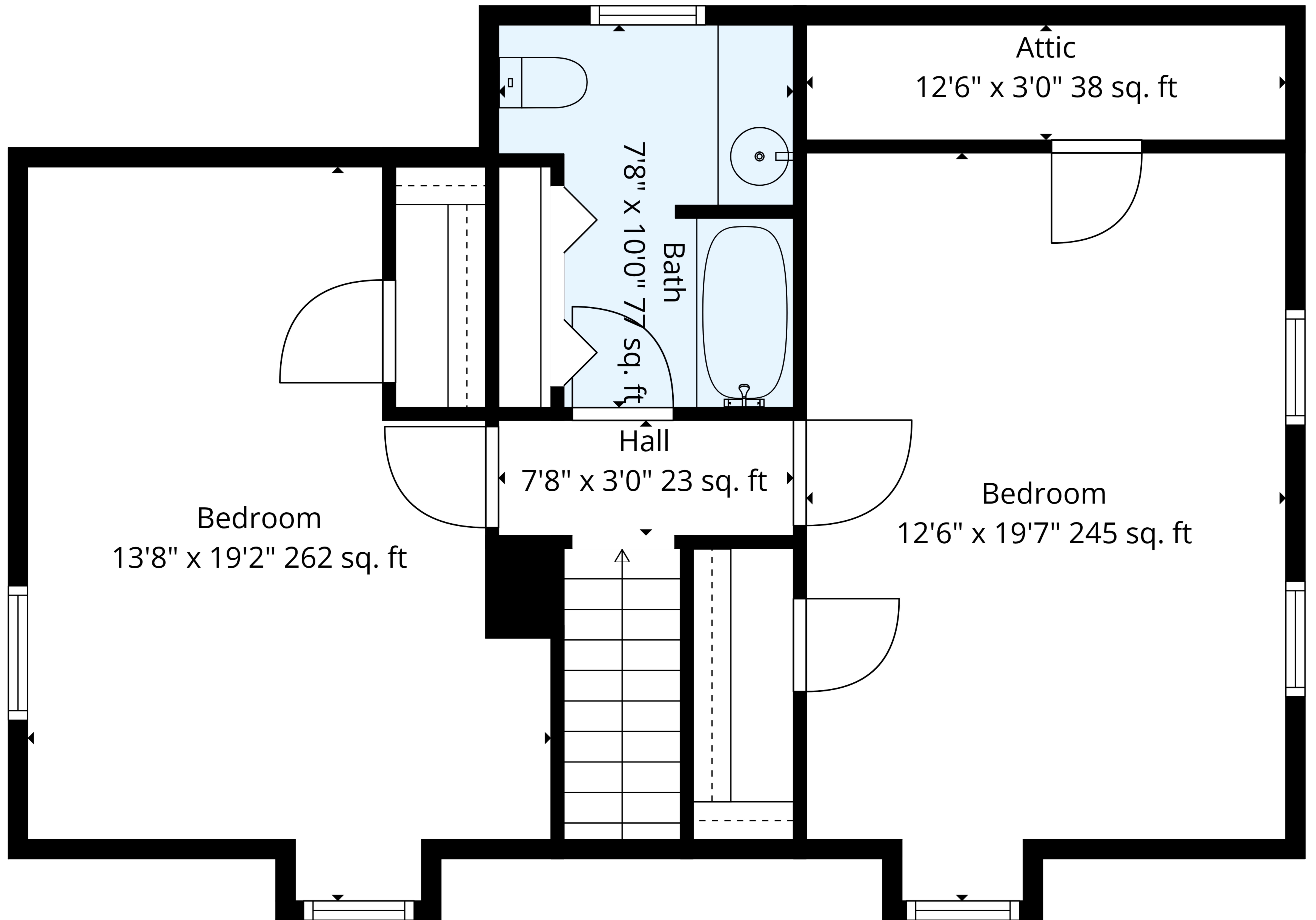
Basement: 0 sq. ft, 1st floor: 1114 sq. ft, 2nd floor: 627 sq. ft

EXCLUDED AREAS: GARAGE: 438 sq. ft, BASEMENT: 536 sq. ft, HALL: 78 sq. ft,

DECK: 255 sq. ft, PORCH: 12 sq. ft, LOW CEILING: 38 sq. ft,

WALLS: 214 sq. ft





TOTAL: 1741 sq. ft

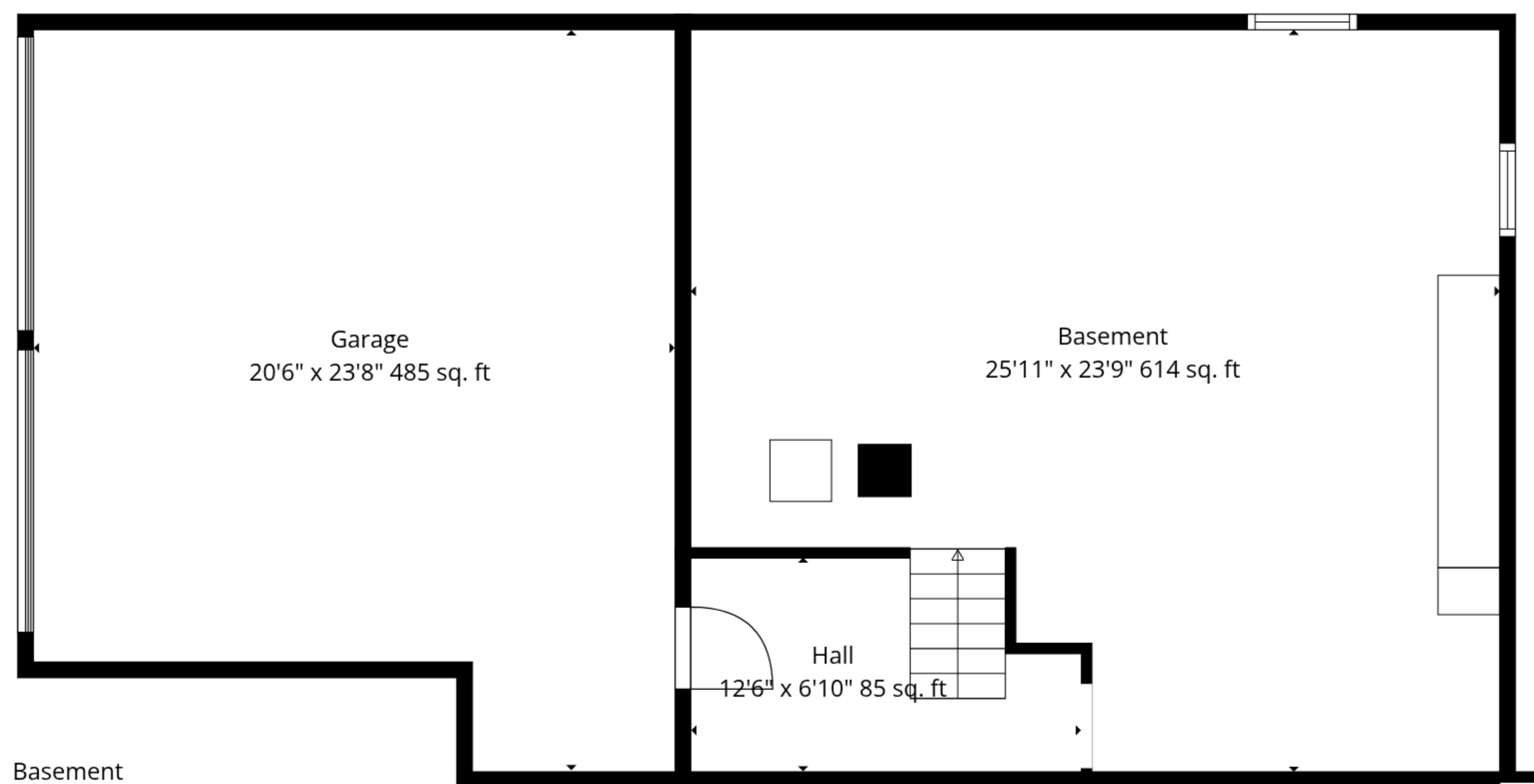
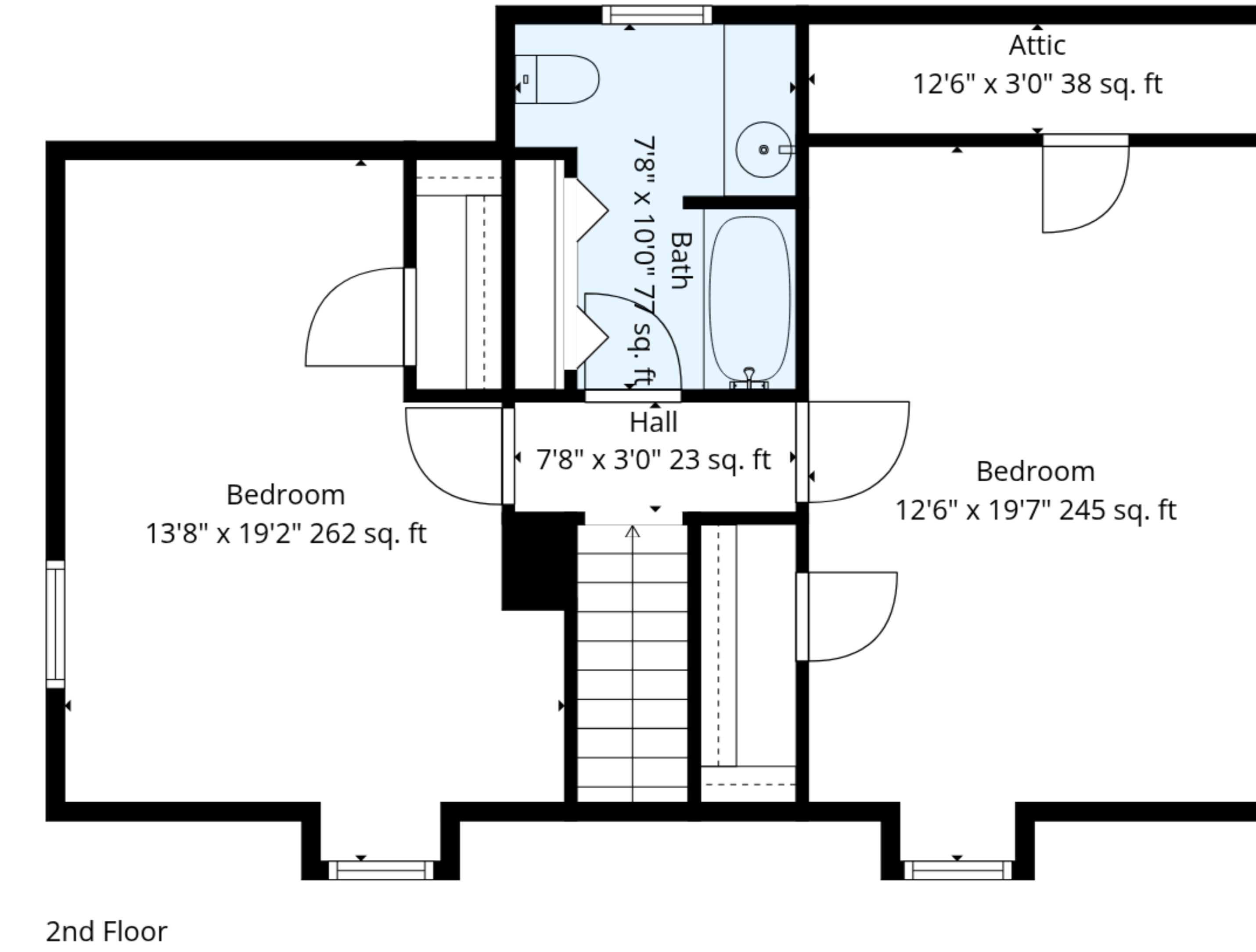
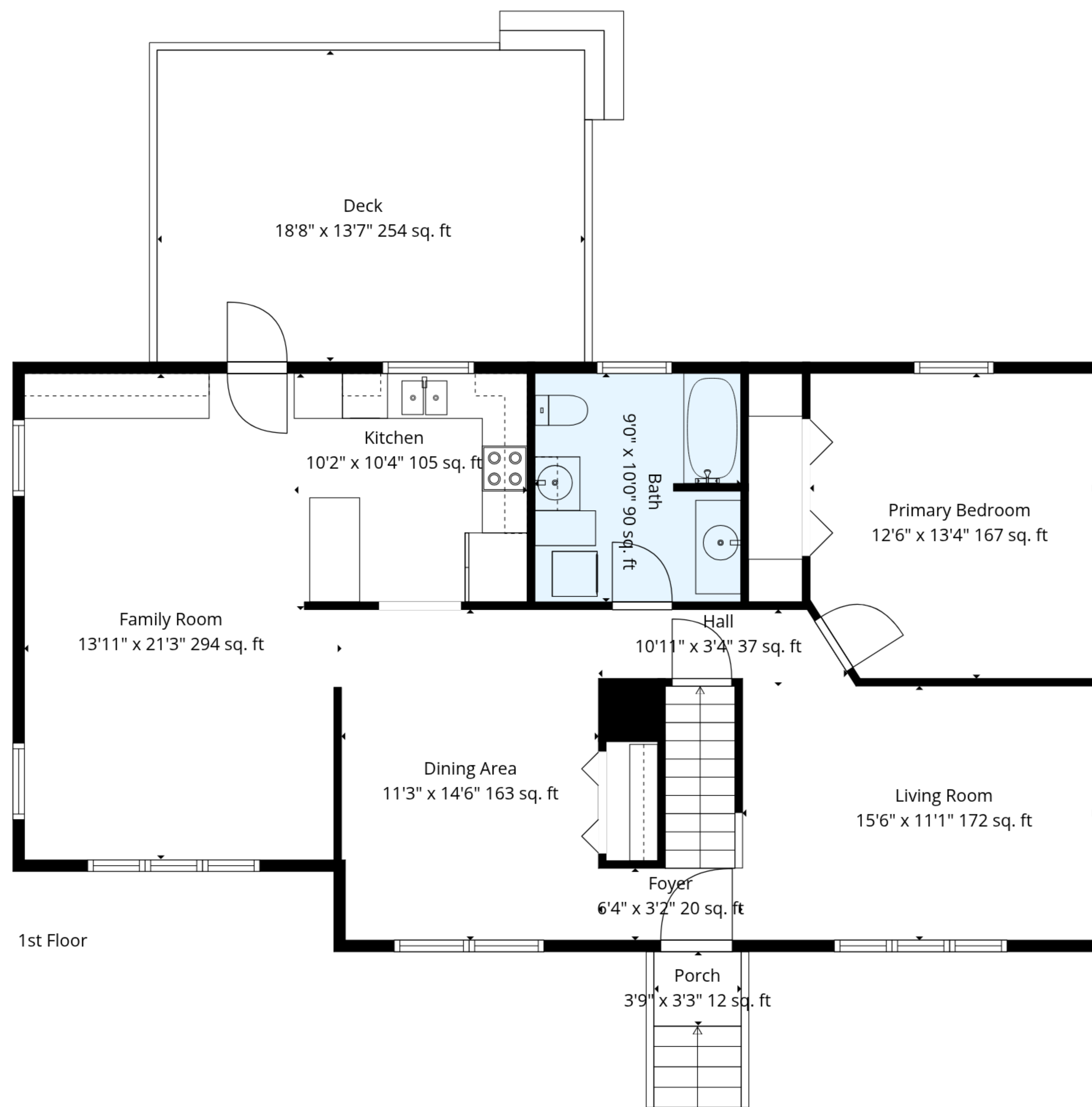
Basement: 0 sq. ft, 1st floor: 1114 sq. ft, 2nd floor: 627 sq. ft

EXCLUDED AREAS: GARAGE: 438 sq. ft, BASEMENT: 536 sq. ft, HALL: 78 sq. ft,

DECK: 255 sq. ft, PORCH: 12 sq. ft, LOW CEILING: 38 sq. ft,

WALLS: 214 sq. ft





TOTAL: 1741 sq. ft
 Basement: 0 sq. ft, 1st floor: 1114 sq. ft, 2nd floor: 627 sq. ft
 EXCLUDED AREAS: GARAGE: 438 sq. ft, BASEMENT: 536 sq. ft, HALL: 78 sq. ft,
 DECK: 255 sq. ft, PORCH: 12 sq. ft, LOW CEILING: 38 sq. ft,
 WALLS: 214 sq. ft

