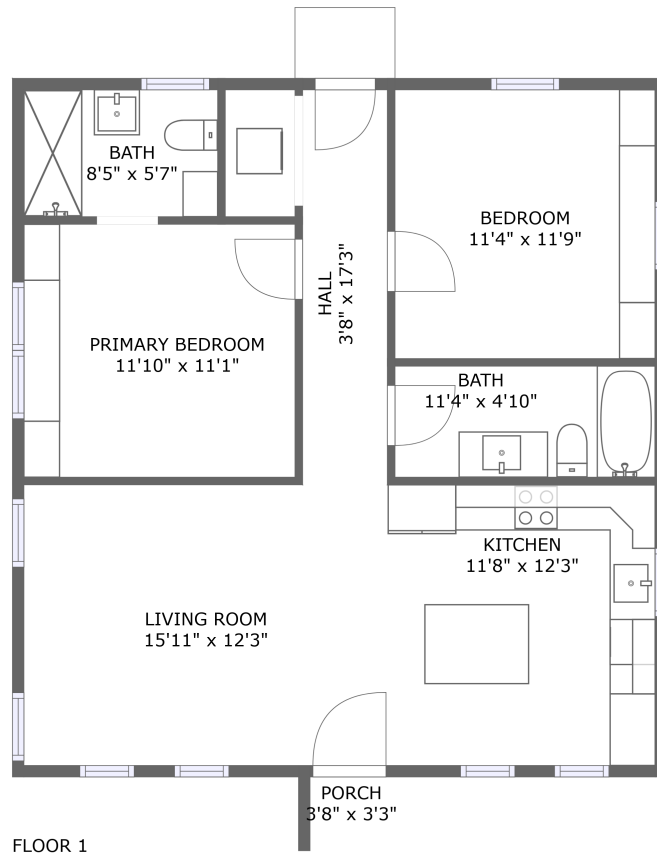



10645 Alabama Highway 71, Pisgah, Jackson County, Alabama, United States, 35765



Property summary

 **0** Garages


 **2** Bedrooms

 **2** Bathrooms

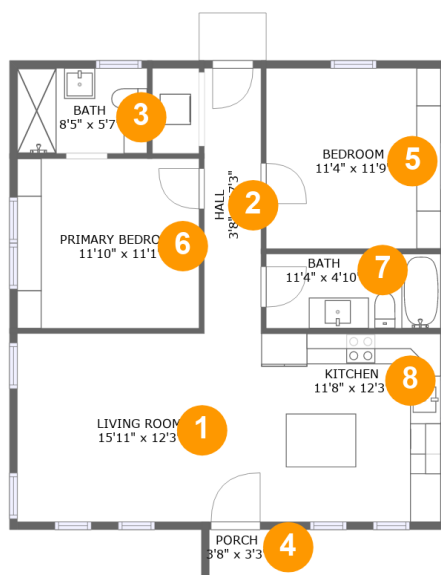
 **0** Half baths

 **1** Floors

 **901** Gross living area sqft

 **913** Total sqft

10645 Alabama Highway 71, Pisgah, Jackson County, Alabama, United States, 35765



Room dimensions

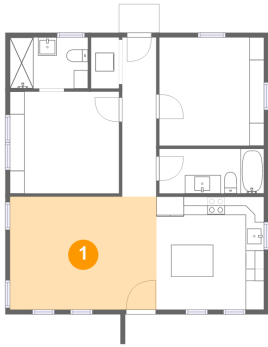
Floor 1

Total sqft: 913 Living area: 901

#		Dimensions	sqft	Counted as living area
1	Living Room	15'11" x 12'3"	195 sq. ft	Yes
2	Hall	3'8" x 17'3"	64 sq. ft	Yes
3	Bath	8'5" x 5'7"	47 sq. ft	Yes
4	Porch	3'8" x 3'3"	12 sq. ft	No
5	Bedroom	11'4" x 11'9"	134 sq. ft	Yes
6	Primary Bedroom	11'10" x 11'1"	131 sq. ft	Yes
7	Bath	11'4" x 4'10"	55 sq. ft	Yes
8	Kitchen	11'8" x 12'3"	143 sq. ft	Yes

10645 Alabama Highway 71, Pisgah, Jackson County, Alabama, United States, 35765

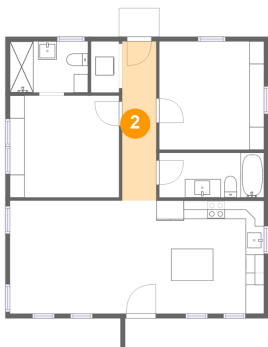
1 Floor 1 - Living Room



Dimensions: 15'11" x 12'3"
Area: 195 sq. ft
Counted as living area: Yes

Heated: Yes
Finished: Yes
Enclosed: Yes
Contiguous: Yes
Permitted: Yes
Wet space: No
Addition: No
Conversion: No

2 Floor 1 - Hall

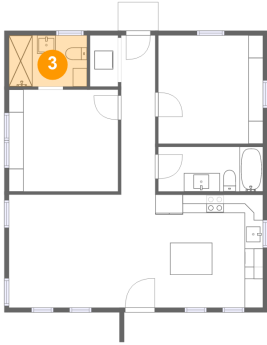


Dimensions: 3'8" x 17'3"
Area: 64 sq. ft
Counted as living area: Yes

Heated: Yes
Finished: Yes
Enclosed: Yes
Contiguous: Yes
Permitted: Yes
Wet space: No
Addition: No
Conversion: No

10645 Alabama Highway 71, Pisgah, Jackson County, Alabama, United States, 35765

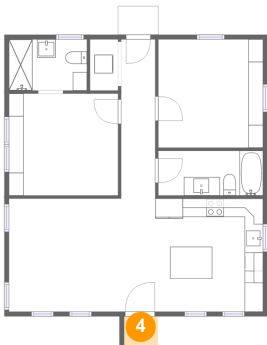
3 Floor 1 - Bath



Dimensions: 8'5" x 5'7"
Area: 47 sq. ft
Counted as living area: Yes

Heated: Yes
Finished: Yes
Enclosed: Yes
Contiguous: Yes
Permitted: Yes
Wet space: Yes
Addition: No
Conversion: No

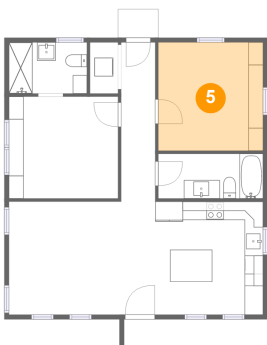
4 Floor 1 - Porch



Dimensions: 3'8" x 3'3"
Area: 12 sq. ft
Counted as living area: No

Heated: No
Finished: Yes
Enclosed: No
Contiguous: Yes
Permitted: Yes
Wet space: No
Addition: No
Conversion: No

5 Floor 1 - Bedroom

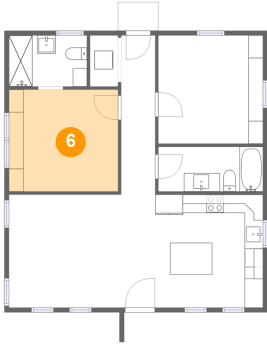


Dimensions: 11'4" x 11'9"
Area: 134 sq. ft
Counted as living area: Yes

Heated: Yes
Finished: Yes
Enclosed: Yes
Contiguous: Yes
Permitted: Yes
Wet space: No
Addition: No
Conversion: No

10645 Alabama Highway 71, Pisgah, Jackson County, Alabama, United States, 35765

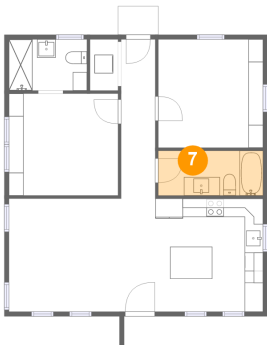
6 Floor 1 - Primary Bedroom



Dimensions: 11'10" x 11'1"
Area: 131 sq. ft
Counted as living area: Yes

Heated: Yes
Finished: Yes
Enclosed: Yes
Contiguous: Yes
Permitted: Yes
Wet space: No
Addition: No
Conversion: No

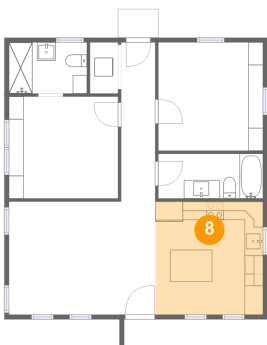
7 Floor 1 - Bath



Dimensions: 11'4" x 4'10"
Area: 55 sq. ft
Counted as living area: Yes

Heated: Yes
Finished: Yes
Enclosed: Yes
Contiguous: Yes
Permitted: Yes
Wet space: Yes
Addition: No
Conversion: No

8 Floor 1 - Kitchen



Dimensions: 11'8" x 12'3"
Area: 143 sq. ft
Counted as living area: Yes

Heated: Yes
Finished: Yes
Enclosed: Yes
Contiguous: Yes
Permitted: Yes
Wet space: No
Addition: No
Conversion: No