


Home report


39 Bradford Avenue, Upper Montclair, Montclair, Essex County,
New Jersey, United States, 07043




Property summary




1
Garages




6
Bedrooms




6
Bathrooms




0
Half baths



4
Floors



7,034
Gross living
area sqft

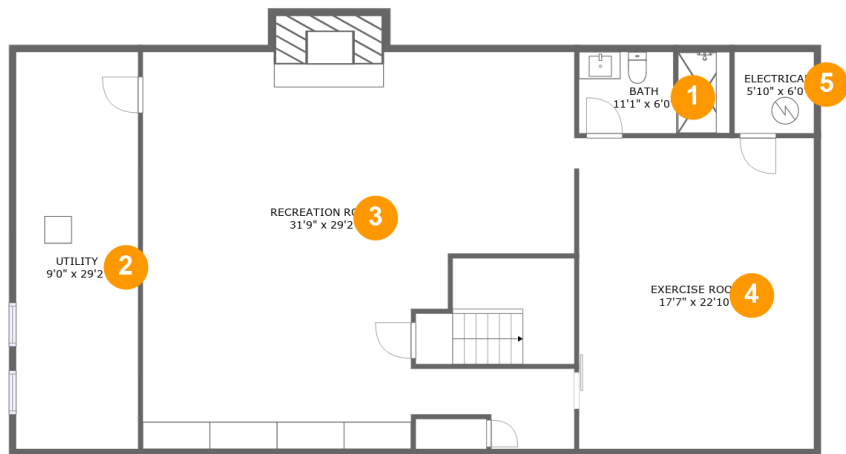


9,119
Total sqft

Scan captured on Mon, 12 May 2025 21:30:33 GMT

Home report

39 Bradford Avenue, Upper Montclair, Montclair, Essex County,
New Jersey, United States, 07043



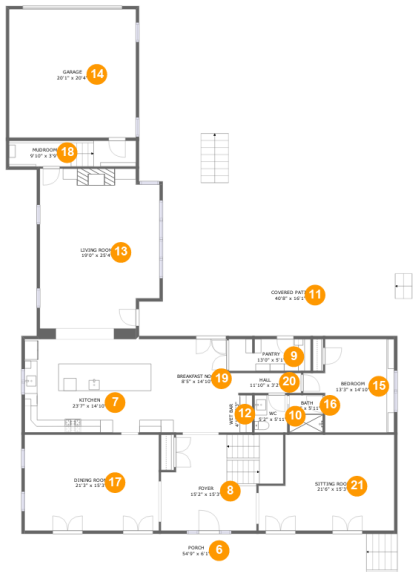
Room dimensions

Floor 1 Total sqft: 1821 Living area: 1456

#		Dimensions	sqft	Counted as living area
1	Bath	11'1" x 6'0"	66 sq. ft	Yes
2	Utility	9'0" x 29'2"	262 sq. ft	No
3	Recreation Room	31'9" x 29'2"	840 sq. ft	Yes
4	Exercise Room	17'7" x 22'10"	395 sq. ft	Yes
5	Electrical	5'10" x 6'0"	35 sq. ft	No

Home report

39 Bradford Avenue, Upper Montclair, Montclair, Essex County,
New Jersey, United States, 07043



Room dimensions

Floor 2 Total sqft: 3718 Living area: 2477

#		Dimensions	sqft	Counted as living area
6	Porch	54'9" x 6'1"	332 sq. ft	No
7	Kitchen	23'7" x 14'10"	349 sq. ft	Yes
8	Foyer	15'2" x 15'3"	249 sq. ft	Yes
9	Pantry	13'0" x 5'1"	65 sq. ft	Yes
10	WC	5'2" x 5'11"	31 sq. ft	Yes
11	Covered Patio	40'8" x 16'1"	469 sq. ft	No
12	Wet Bar	4'1" x 6'3"	25 sq. ft	Yes
13	Living Room	19'0" x 25'4"	454 sq. ft	Yes
14	Garage	20'1" x 20'4"	410 sq. ft	No
15	Bedroom	13'3" x 14'10"	173 sq. ft	Yes
16	Bath	5'4" x 5'11"	32 sq. ft	Yes

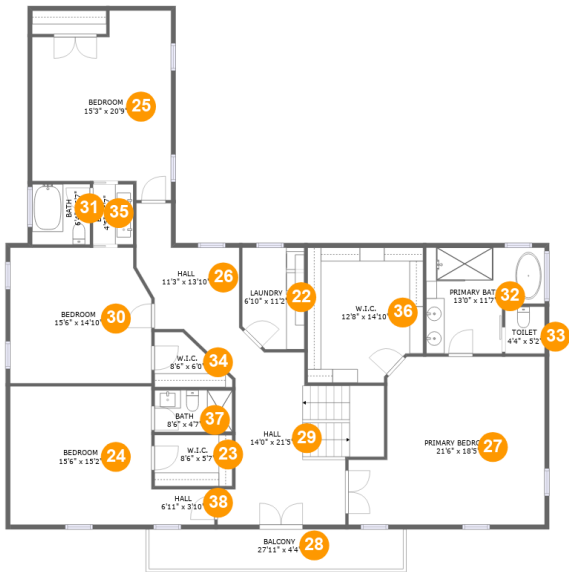
Home report

39 Bradford Avenue, Upper Montclair, Montclair, Essex County,
New Jersey, United States, 07043

#		Dimensions	sqft	Counted as living area
17	Dining Room	21'3" x 15'3"	324 sq. ft	Yes
18	Mudroom	9'10" x 3'9"	82 sq. ft	Yes
19	Breakfast Nook	8'5" x 14'10"	125 sq. ft	Yes
20	Hall	11'10" x 3'2"	37 sq. ft	Yes
21	Sitting Room	21'6" x 15'3"	293 sq. ft	Yes

Home report

39 Bradford Avenue, Upper Montclair, Montclair, Essex County,
New Jersey, United States, 07043



Room dimensions

Floor 3 Total sqft: 2414 Living area: 2292

#		Dimensions	sqft	Counted as living area
22	Laundry	6'10" x 11'2"	73 sq. ft	Yes
23	W.I.C.	8'6" x 5'7"	48 sq. ft	Yes
24	Bedroom	15'6" x 15'2"	235 sq. ft	Yes
25	Bedroom	15'3" x 20'9"	268 sq. ft	Yes
26	Hall	11'3" x 13'10"	109 sq. ft	Yes
27	Primary Bedroom	21'6" x 18'5"	346 sq. ft	Yes
28	Balcony	27'11" x 4'4"	122 sq. ft	No
29	Hall	14'0" x 21'5"	272 sq. ft	Yes
30	Bedroom	15'6" x 14'10"	223 sq. ft	Yes
31	Bath	6'4" x 6'7"	42 sq. ft	Yes
32	Primary Bath	13'0" x 11'7"	125 sq. ft	Yes

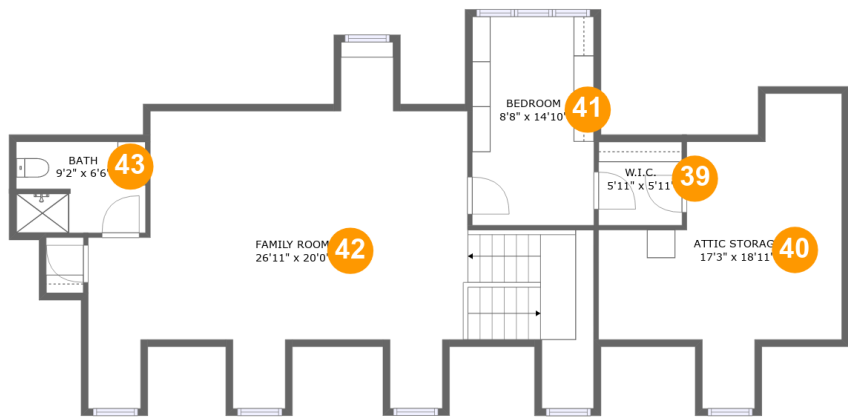
Home report

**39 Bradford Avenue, Upper Montclair, Montclair, Essex County,
New Jersey, United States, 07043**

#		Dimensions	sqft	Counted as living area
33	Toilet	4'4" x 5'2"	22 sq. ft	Yes
34	W.I.C.	8'6" x 6'0"	37 sq. ft	Yes
35	Bath	4'5" x 6'7"	29 sq. ft	Yes
36	W.I.C.	12'8" x 14'10"	177 sq. ft	Yes
37	Bath	8'6" x 4'7"	39 sq. ft	Yes
38	Hall	6'11" x 3'10"	27 sq. ft	Yes

Home report

39 Bradford Avenue, Upper Montclair, Montclair, Essex County,
New Jersey, United States, 07043

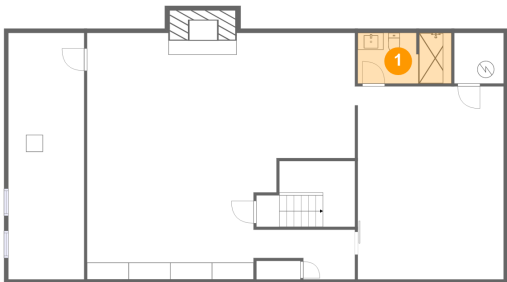


Room dimensions

Floor 4 Total sqft: 1166 Living area: 809

#		Dimensions	sqft	Counted as living area
39	W.I.C.	5'11" x 5'11"	35 sq. ft	Yes
40	Attic Storage	17'3" x 18'11"	240 sq. ft	No
41	Bedroom	8'8" x 14'10"	128 sq. ft	Yes
42	Family Room	26'11" x 20'0"	488 sq. ft	Yes
43	Bath	9'2" x 6'6"	58 sq. ft	Yes

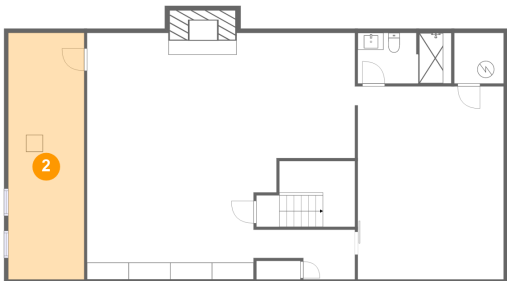
1 Floor 1 - Bath



Dimensions: 11'1" x 6'0"
Area: 66 sq. ft
Counted as living area: Yes

Heated: Yes
Finished: Yes
Enclosed: Yes
Contiguous: Yes
Permitted: Yes
Wet space: Yes
Addition: No
Conversion: No

2 Floor 1 - Utility



Dimensions: 9'0" x 29'2"
Area: 262 sq. ft
Counted as living area: No

Heated: Yes
Finished: No
Enclosed: Yes
Contiguous: Yes
Permitted: Yes
Wet space: No
Addition: No
Conversion: No

Home report

39 Bradford Avenue, Upper Montclair, Montclair, Essex County,
New Jersey, United States, 07043

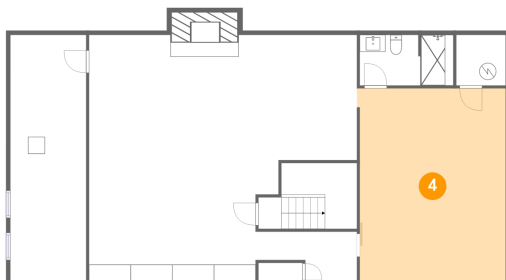
3 Floor 1 - Recreation Room



Dimensions: 31'9" x 29'2"
Area: 840 sq. ft
Counted as living area: Yes

Heated: Yes
Finished: Yes
Enclosed: Yes
Contiguous: Yes
Permitted: Yes
Wet space: No
Addition: No
Conversion: No

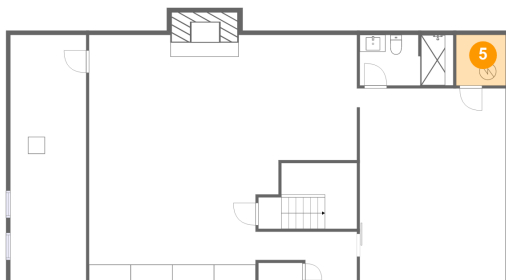
4 Floor 1 - Exercise Room



Dimensions: 17'7" x 22'10"
Area: 395 sq. ft
Counted as living area: Yes

Heated: Yes
Finished: Yes
Enclosed: Yes
Contiguous: Yes
Permitted: Yes
Wet space: No
Addition: No
Conversion: No

5 Floor 1 - Electrical

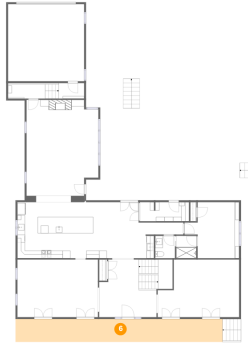


Dimensions: 5'10" x 6'0"
Area: 35 sq. ft
Counted as living area: No

Heated: No
Finished: No
Enclosed: Yes
Contiguous: Yes
Permitted: Yes
Wet space: No
Addition: No
Conversion: No

39 Bradford Avenue, Upper Montclair, Montclair, Essex County,
New Jersey, United States, 07043

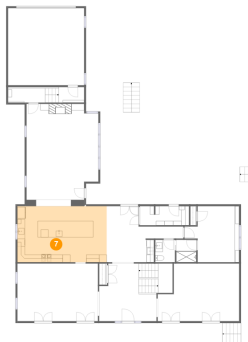
6 Floor 2 - Porch



Dimensions: 54'9" x 6'1"
Area: 332 sq. ft
Counted as living area: No

Heated: No
Finished: Yes
Enclosed: No
Contiguous: Yes
Permitted: Yes
Wet space: No
Addition: No
Conversion: No

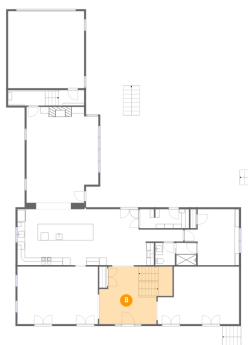
7 Floor 2 - Kitchen



Dimensions: 23'7" x 14'10"
Area: 349 sq. ft
Counted as living area: Yes

Heated: Yes
Finished: Yes
Enclosed: Yes
Contiguous: Yes
Permitted: Yes
Wet space: No
Addition: No
Conversion: No

8 Floor 2 - Foyer



Dimensions: 15'2" x 15'3"
Area: 249 sq. ft
Counted as living area: Yes

Heated: Yes
Finished: Yes
Enclosed: Yes
Contiguous: Yes
Permitted: Yes
Wet space: No
Addition: No
Conversion: No

39 Bradford Avenue, Upper Montclair, Montclair, Essex County,
New Jersey, United States, 07043

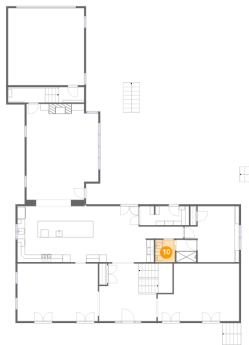
9 Floor 2 - Pantry



Dimensions: 13'0" x 5'1"
Area: 65 sq. ft
Counted as living area: Yes

Heated: Yes
Finished: Yes
Enclosed: Yes
Contiguous: Yes
Permitted: Yes
Wet space: No
Addition: No
Conversion: No

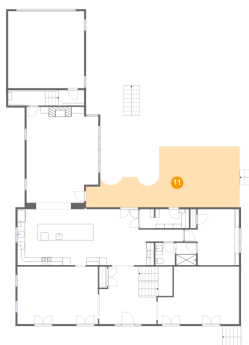
10 Floor 2 - WC



Dimensions: 5'2" x 5'11"
Area: 31 sq. ft
Counted as living area: Yes

Heated: Yes
Finished: Yes
Enclosed: Yes
Contiguous: Yes
Permitted: Yes
Wet space: Yes
Addition: No
Conversion: No

11 Floor 2 - Covered Patio

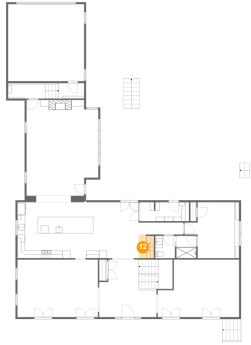


Dimensions: 40'8" x 16'1"
Area: 469 sq. ft
Counted as living area: No

Heated: No
Finished: Yes
Enclosed: No
Contiguous: Yes
Permitted: Yes
Wet space: No
Addition: No
Conversion: No

39 Bradford Avenue, Upper Montclair, Montclair, Essex County,
New Jersey, United States, 07043

12 Floor 2 - Wet Bar



Dimensions: 4'1" x 6'3"
Area: 25 sq. ft
Counted as living area: Yes

Heated: Yes
Finished: Yes
Enclosed: Yes
Contiguous: Yes
Permitted: Yes
Wet space: No
Addition: No
Conversion: No

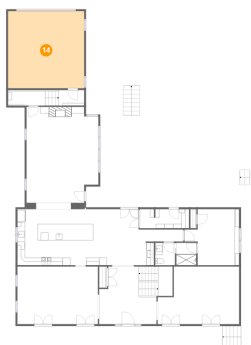
13 Floor 2 - Living Room



Dimensions: 19'0" x 25'4"
Area: 454 sq. ft
Counted as living area: Yes

Heated: Yes
Finished: Yes
Enclosed: Yes
Contiguous: Yes
Permitted: Yes
Wet space: No
Addition: No
Conversion: No

14 Floor 2 - Garage

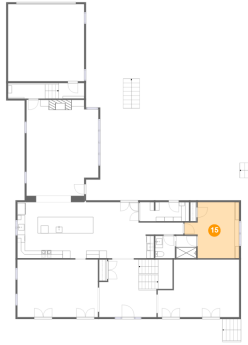


Dimensions: 20'1" x 20'4"
Area: 410 sq. ft
Counted as living area: No

Heated: No
Finished: No
Enclosed: Yes
Contiguous: Yes
Permitted: Yes
Wet space: No
Addition: No
Conversion: No

39 Bradford Avenue, Upper Montclair, Montclair, Essex County,
New Jersey, United States, 07043

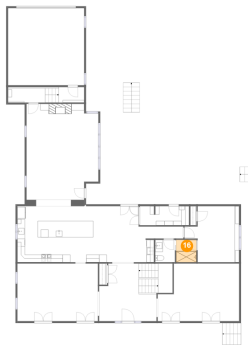
15 Floor 2 - Bedroom



Dimensions: 13'3" x 14'10"
Area: 173 sq. ft
Counted as living area: Yes

Heated: Yes
Finished: Yes
Enclosed: Yes
Contiguous: Yes
Permitted: Yes
Wet space: No
Addition: No
Conversion: No

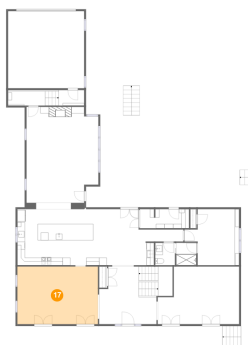
16 Floor 2 - Bath



Dimensions: 5'4" x 5'11"
Area: 32 sq. ft
Counted as living area: Yes

Heated: Yes
Finished: Yes
Enclosed: Yes
Contiguous: Yes
Permitted: Yes
Wet space: Yes
Addition: No
Conversion: No

17 Floor 2 - Dining Room

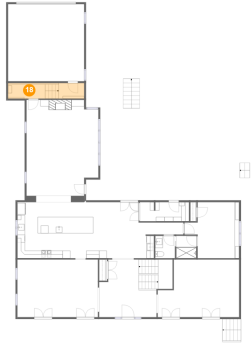


Dimensions: 21'3" x 15'3"
Area: 324 sq. ft
Counted as living area: Yes

Heated: Yes
Finished: Yes
Enclosed: Yes
Contiguous: Yes
Permitted: Yes
Wet space: No
Addition: No
Conversion: No

39 Bradford Avenue, Upper Montclair, Montclair, Essex County,
New Jersey, United States, 07043

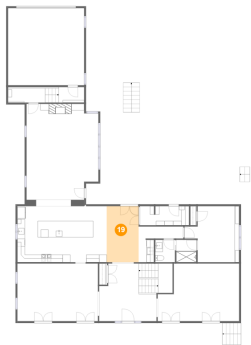
18 Floor 2 - Mudroom



Dimensions: 9'10" x 3'9"
Area: 82 sq. ft
Counted as living area: Yes

Heated: Yes
Finished: Yes
Enclosed: Yes
Contiguous: Yes
Permitted: Yes
Wet space: No
Addition: No
Conversion: No

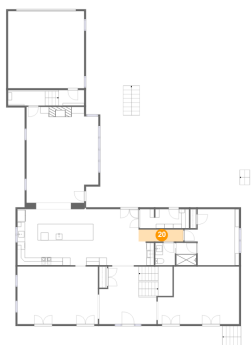
19 Floor 2 - Breakfast Nook



Dimensions: 8'5" x 14'10"
Area: 125 sq. ft
Counted as living area: Yes

Heated: Yes
Finished: Yes
Enclosed: Yes
Contiguous: Yes
Permitted: Yes
Wet space: No
Addition: No
Conversion: No

20 Floor 2 - Hall

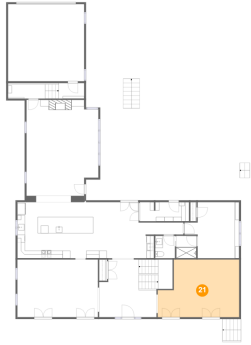


Dimensions: 11'10" x 3'2"
Area: 37 sq. ft
Counted as living area: Yes

Heated: Yes
Finished: Yes
Enclosed: Yes
Contiguous: Yes
Permitted: Yes
Wet space: No
Addition: No
Conversion: No

39 Bradford Avenue, Upper Montclair, Montclair, Essex County,
New Jersey, United States, 07043

21 Floor 2 - Sitting Room



Dimensions: 21'6" x 15'3"
Area: 293 sq. ft
Counted as living area: Yes

Heated: Yes
Finished: Yes
Enclosed: Yes
Contiguous: Yes
Permitted: Yes
Wet space: No
Addition: No
Conversion: No

22 Floor 3 - Laundry



Dimensions: 6'10" x 11'2"
Area: 73 sq. ft
Counted as living area: Yes

Heated: Yes
Finished: Yes
Enclosed: Yes
Contiguous: Yes
Permitted: Yes
Wet space: No
Addition: No
Conversion: No

23 Floor 3 - W.I.C.



Dimensions: 8'6" x 5'7"
Area: 48 sq. ft
Counted as living area: Yes

Heated: Yes
Finished: Yes
Enclosed: Yes
Contiguous: Yes
Permitted: Yes
Wet space: No
Addition: No
Conversion: No

39 Bradford Avenue, Upper Montclair, Montclair, Essex County,
New Jersey, United States, 07043

24 Floor 3 - Bedroom



Dimensions: 15'6" x 15'2"
Area: 235 sq. ft
Counted as living area: Yes

Heated: Yes
Finished: Yes
Enclosed: Yes
Contiguous: Yes
Permitted: Yes
Wet space: No
Addition: No
Conversion: No

25 Floor 3 - Bedroom



Dimensions: 15'3" x 20'9"
Area: 268 sq. ft
Counted as living area: Yes

Heated: Yes
Finished: Yes
Enclosed: Yes
Contiguous: Yes
Permitted: Yes
Wet space: No
Addition: No
Conversion: No

26 Floor 3 - Hall



Dimensions: 11'3" x 13'10"
Area: 109 sq. ft
Counted as living area: Yes

Heated: Yes
Finished: Yes
Enclosed: Yes
Contiguous: Yes
Permitted: Yes
Wet space: No
Addition: No
Conversion: No

39 Bradford Avenue, Upper Montclair, Montclair, Essex County,
New Jersey, United States, 07043

27 Floor 3 - Primary Bedroom



Dimensions: 21'6" x 18'5"
Area: 346 sq. ft
Counted as living area: Yes

Heated: Yes
Finished: Yes
Enclosed: Yes
Contiguous: Yes
Permitted: Yes
Wet space: No
Addition: No
Conversion: No

28 Floor 3 - Balcony



Dimensions: 27'11" x 4'4"
Area: 122 sq. ft
Counted as living area: No

Heated: No
Finished: Yes
Enclosed: No
Contiguous: Yes
Permitted: Yes
Wet space: No
Addition: No
Conversion: No

29 Floor 3 - Hall



Dimensions: 14'0" x 21'5"
Area: 272 sq. ft
Counted as living area: Yes

Heated: Yes
Finished: Yes
Enclosed: Yes
Contiguous: Yes
Permitted: Yes
Wet space: No
Addition: No
Conversion: No

39 Bradford Avenue, Upper Montclair, Montclair, Essex County,
New Jersey, United States, 07043

30 Floor 3 - Bedroom



Dimensions: 15'6" x 14'10"
Area: 223 sq. ft
Counted as living area: Yes

Heated: Yes
Finished: Yes
Enclosed: Yes
Contiguous: Yes
Permitted: Yes
Wet space: No
Addition: No
Conversion: No

31 Floor 3 - Bath



Dimensions: 6'4" x 6'7"
Area: 42 sq. ft
Counted as living area: Yes

Heated: Yes
Finished: Yes
Enclosed: Yes
Contiguous: Yes
Permitted: Yes
Wet space: Yes
Addition: No
Conversion: No

32 Floor 3 - Primary Bath



Dimensions: 13'0" x 11'7"
Area: 125 sq. ft
Counted as living area: Yes

Heated: Yes
Finished: Yes
Enclosed: Yes
Contiguous: Yes
Permitted: Yes
Wet space: Yes
Addition: No
Conversion: No

Home report

39 Bradford Avenue, Upper Montclair, Montclair, Essex County,
New Jersey, United States, 07043

33 Floor 3 - Toilet



Dimensions: 4'4" x 5'2"
Area: 22 sq. ft
Counted as living area: Yes

Heated: Yes
Finished: Yes
Enclosed: Yes
Contiguous: Yes
Permitted: Yes
Wet space: Yes
Addition: No
Conversion: No

34 Floor 3 - W.I.C.



Dimensions: 8'6" x 6'0"
Area: 37 sq. ft
Counted as living area: Yes

Heated: Yes
Finished: Yes
Enclosed: Yes
Contiguous: Yes
Permitted: Yes
Wet space: No
Addition: No
Conversion: No

35 Floor 3 - Bath



Dimensions: 4'5" x 6'7"
Area: 29 sq. ft
Counted as living area: Yes

Heated: Yes
Finished: Yes
Enclosed: Yes
Contiguous: Yes
Permitted: Yes
Wet space: Yes
Addition: No
Conversion: No

39 Bradford Avenue, Upper Montclair, Montclair, Essex County,
New Jersey, United States, 07043

36 Floor 3 - W.I.C.



Dimensions: 12'8" x 14'10"
Area: 177 sq. ft
Counted as living area: Yes

Heated: Yes
Finished: Yes
Enclosed: Yes
Contiguous: Yes
Permitted: Yes
Wet space: No
Addition: No
Conversion: No

37 Floor 3 - Bath



Dimensions: 8'6" x 4'7"
Area: 39 sq. ft
Counted as living area: Yes

Heated: Yes
Finished: Yes
Enclosed: Yes
Contiguous: Yes
Permitted: Yes
Wet space: Yes
Addition: No
Conversion: No

38 Floor 3 - Hall

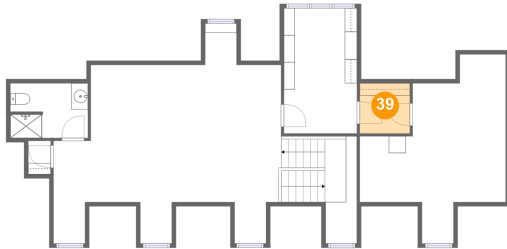


Dimensions: 6'11" x 3'10"
Area: 27 sq. ft
Counted as living area: Yes

Heated: Yes
Finished: Yes
Enclosed: Yes
Contiguous: Yes
Permitted: Yes
Wet space: No
Addition: No
Conversion: No

39 Bradford Avenue, Upper Montclair, Montclair, Essex County,
New Jersey, United States, 07043

39 Floor 4 - W.I.C.



Dimensions: 5'11" x 5'11"
Area: 35 sq. ft
Counted as living area: Yes

Heated: Yes
Finished: Yes
Enclosed: Yes
Contiguous: Yes
Permitted: Yes
Wet space: No
Addition: No
Conversion: No

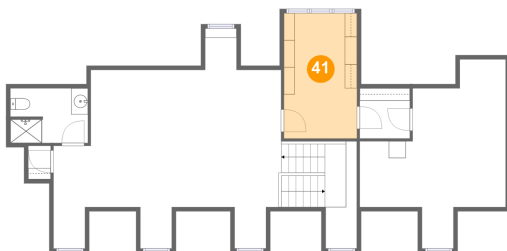
40 Floor 4 - Attic Storage



Dimensions: 17'3" x 18'11"
Area: 240 sq. ft
Counted as living area: No

Heated: No
Finished: No
Enclosed: Yes
Contiguous: Yes
Permitted: Yes
Wet space: No
Addition: No
Conversion: No

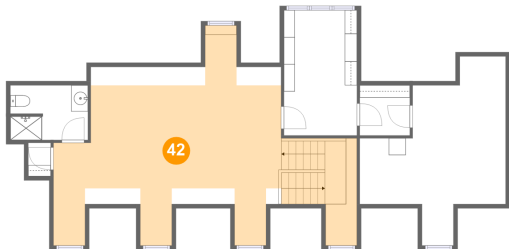
41 Floor 4 - Bedroom



Dimensions: 8'8" x 14'10"
Area: 128 sq. ft
Counted as living area: Yes

Heated: Yes
Finished: Yes
Enclosed: Yes
Contiguous: Yes
Permitted: Yes
Wet space: No
Addition: No
Conversion: No

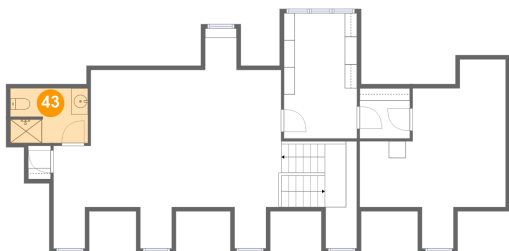
42 Floor 4 - Family Room



Dimensions: 26'11" x 20'0"
Area: 488 sq. ft
Counted as living area: Yes

Heated: Yes
Finished: Yes
Enclosed: Yes
Contiguous: Yes
Permitted: Yes
Wet space: No
Addition: No
Conversion: No

43 Floor 4 - Bath



Dimensions: 9'2" x 6'6"
Area: 58 sq. ft
Counted as living area: Yes

Heated: Yes
Finished: Yes
Enclosed: Yes
Contiguous: Yes
Permitted: Yes
Wet space: Yes
Addition: No
Conversion: No