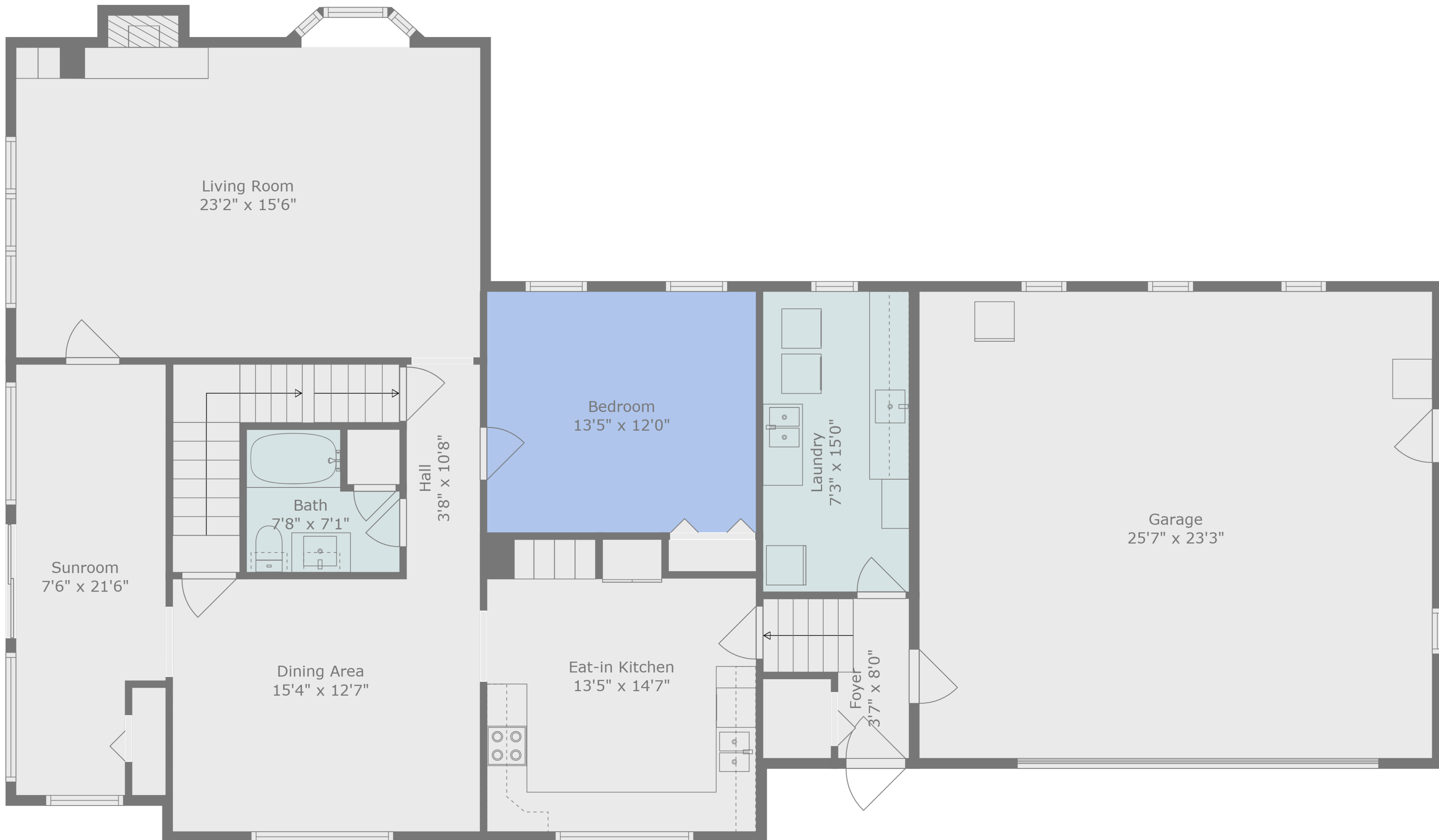


TOTAL: 2371 sq. ft

BELOW GROUND: 339 sq. ft, FLOOR 2: 1442 sq. ft, FLOOR 3: 590 sq. ft
EXCLUDED AREAS: ELECTRICAL ROOM: 225 sq. ft, GARAGE: 595 sq. ft, BAY WINDOW: 8 sq. ft,
FIREPLACE: 7 sq. ft



Measurements Are Deemed Highly Reliable, But Not Guaranteed.

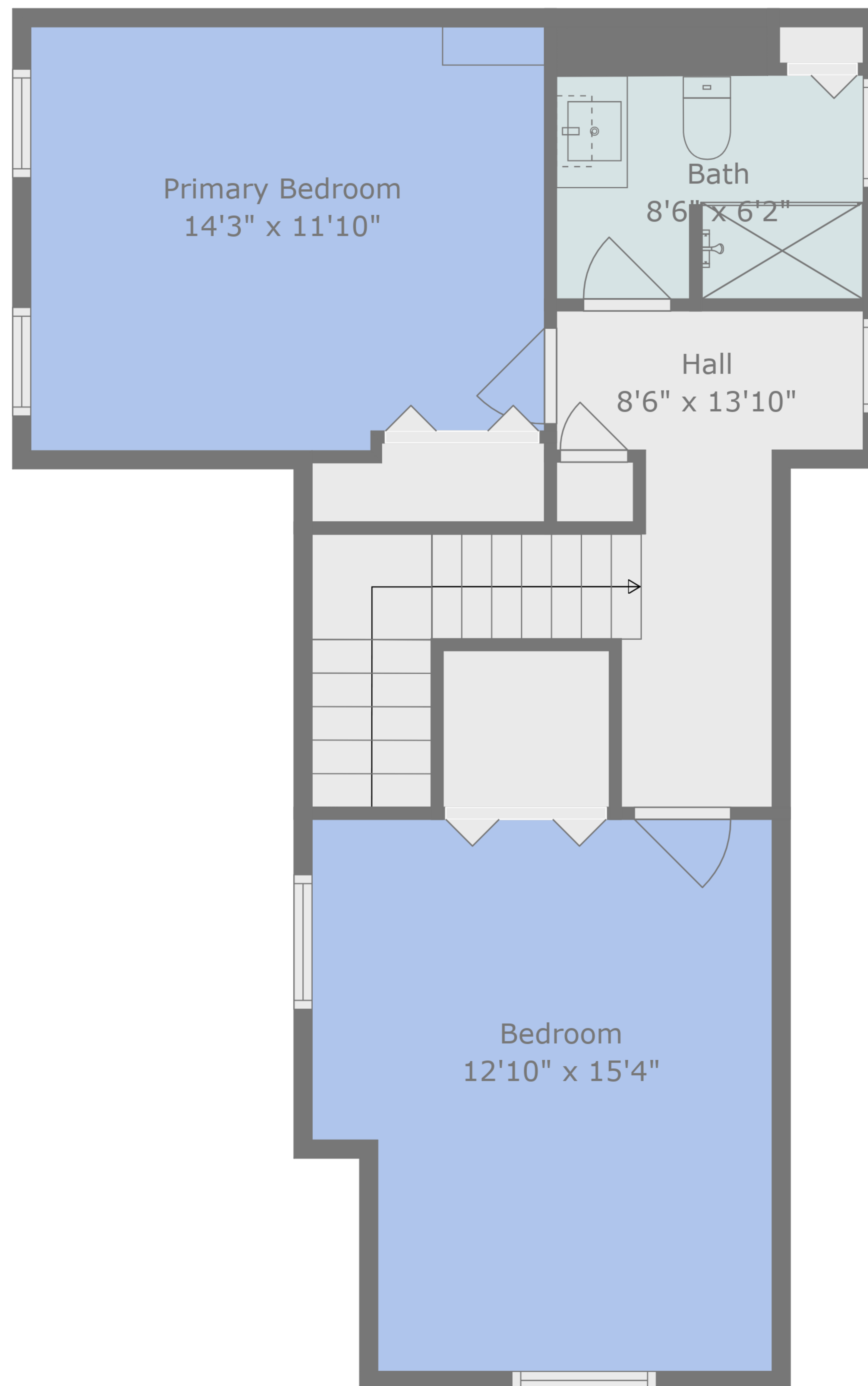


TOTAL: 2371 sq. ft

BELOW GROUND: 339 sq. ft, FLOOR 2: 1442 sq. ft, FLOOR 3: 590 sq. ft
 EXCLUDED AREAS: ELECTRICAL ROOM: 225 sq. ft, GARAGE: 595 sq. ft, BAY WINDOW: 8 sq. ft,
 FIREPLACE: 7 sq. ft



Measurements Are Deemed Highly Reliable, But Not Guaranteed.

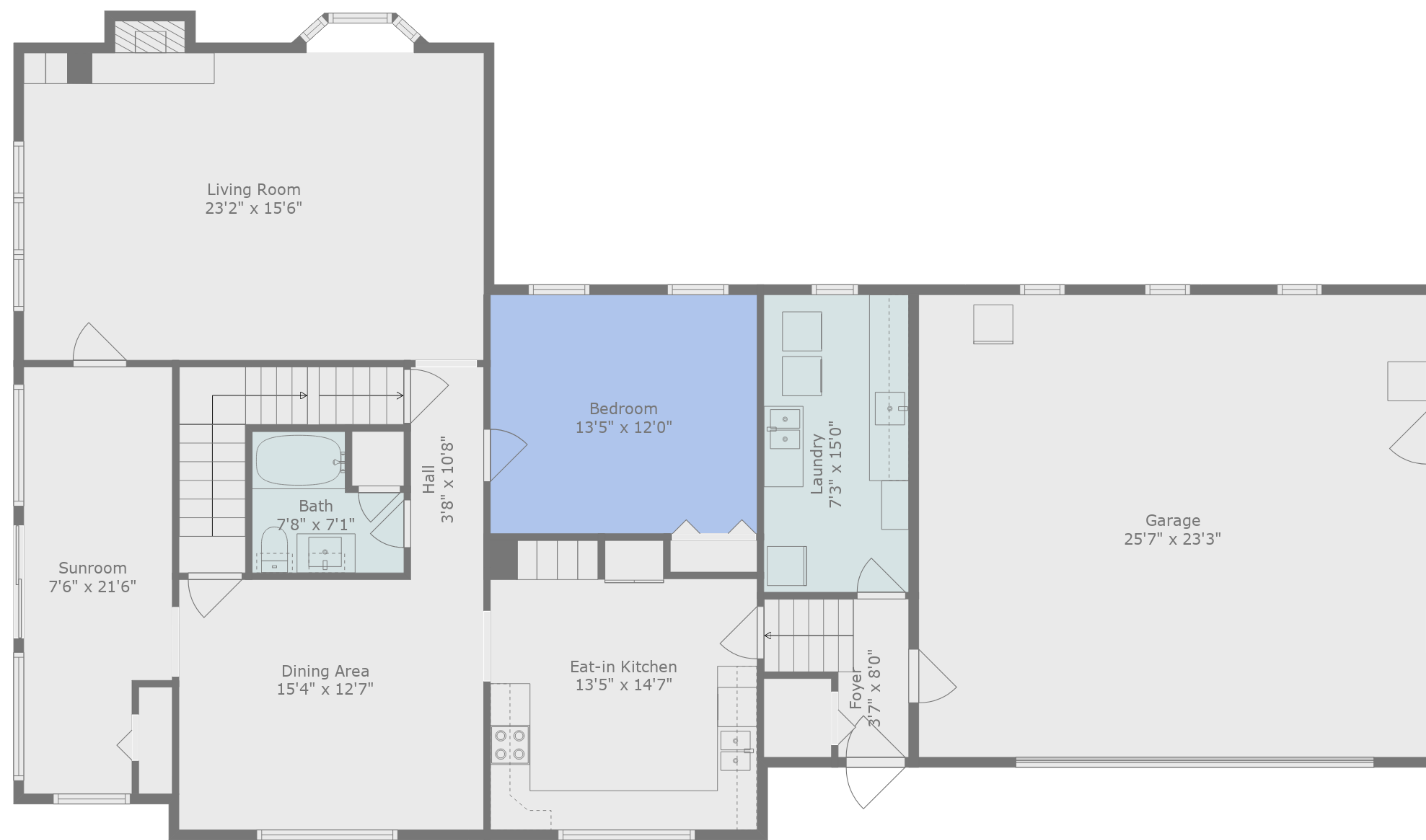


TOTAL: 2371 sq. ft

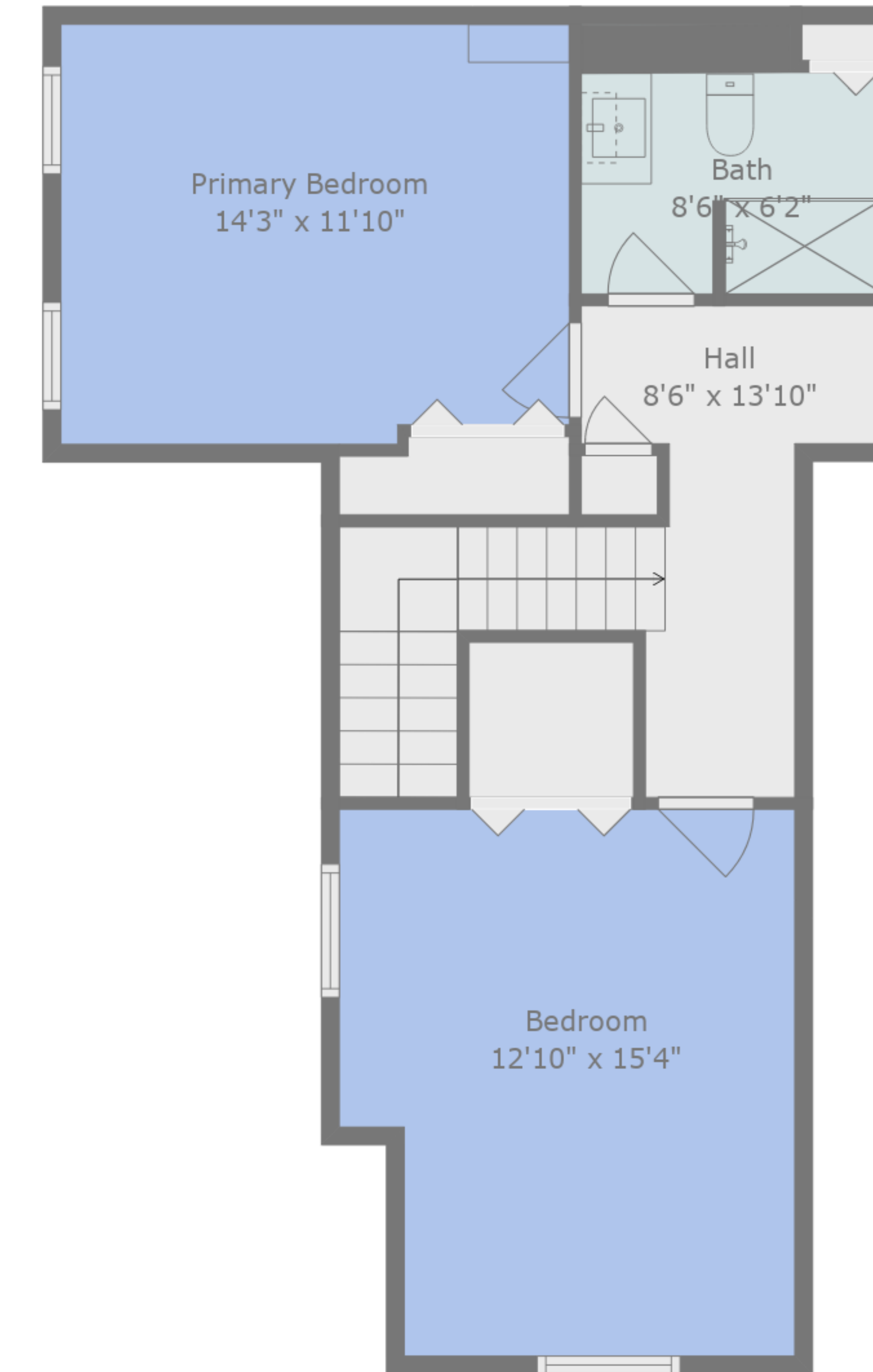
BELOW GROUND: 339 sq. ft, FLOOR 2: 1442 sq. ft, FLOOR 3: 590 sq. ft
 EXCLUDED AREAS: ELECTRICAL ROOM: 225 sq. ft, GARAGE: 595 sq. ft, BAY WINDOW: 8 sq. ft,
 FIREPLACE: 7 sq. ft

Measurements Are Deemed Highly Reliable, But Not Guaranteed.

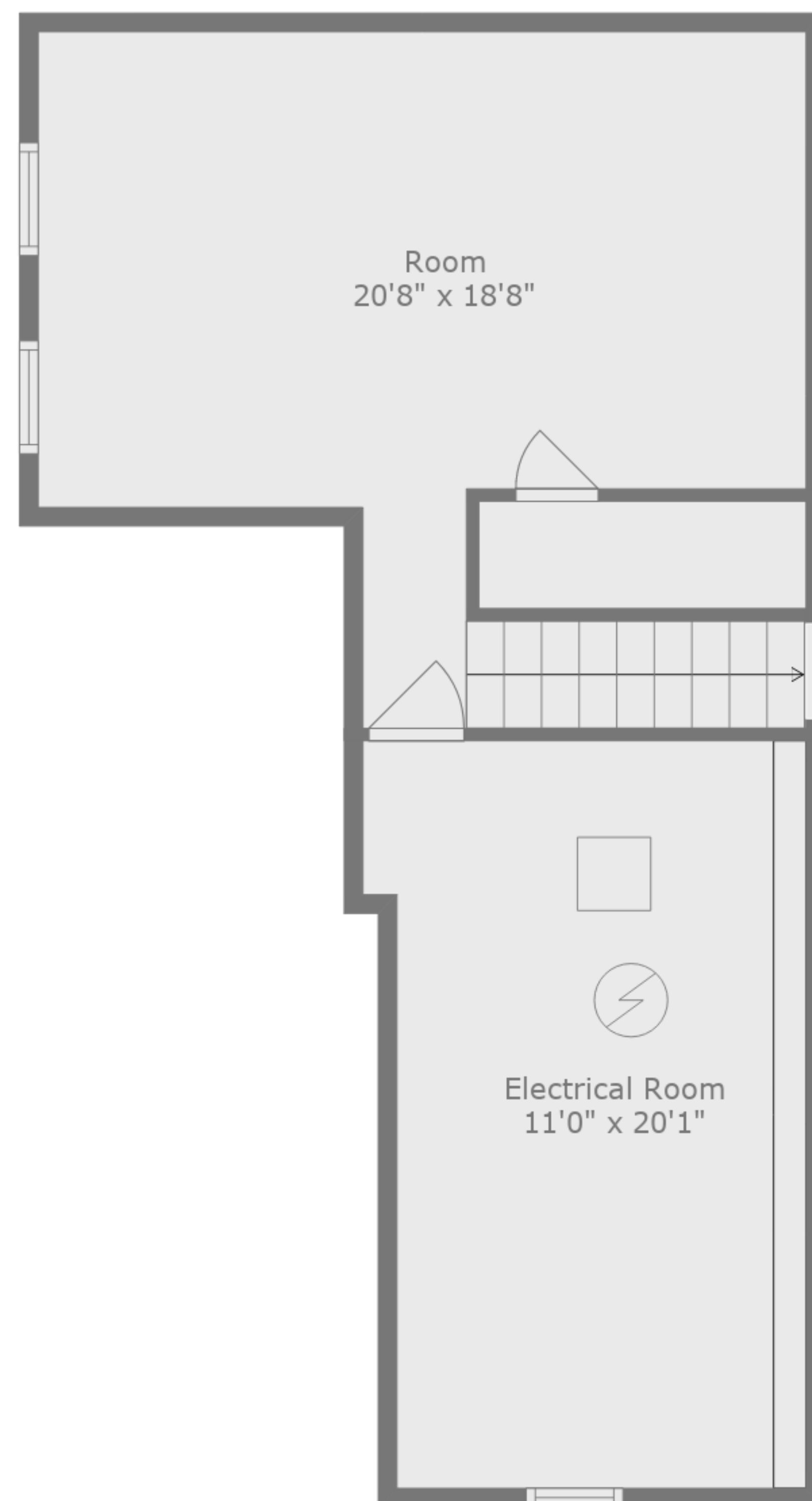




Floor 2



Floor 3



Floor 1

TOTAL: 2371 sq. ft

BELOW GROUND: 339 sq. ft, FLOOR 2: 1442 sq. ft, FLOOR 3: 590 sq. ft
 EXCLUDED AREAS: ELECTRICAL ROOM: 225 sq. ft, GARAGE: 595 sq. ft, BAY WINDOW: 8 sq. ft,
 FIREPLACE: 7 sq. ft



Measurements Are Deemed Highly Reliable, But Not Guaranteed.