

STORAGE
21'4" X 23'0"

ROOM
15'2" X 10'5"

RECREATION ROOM
33'2" X 26'10"

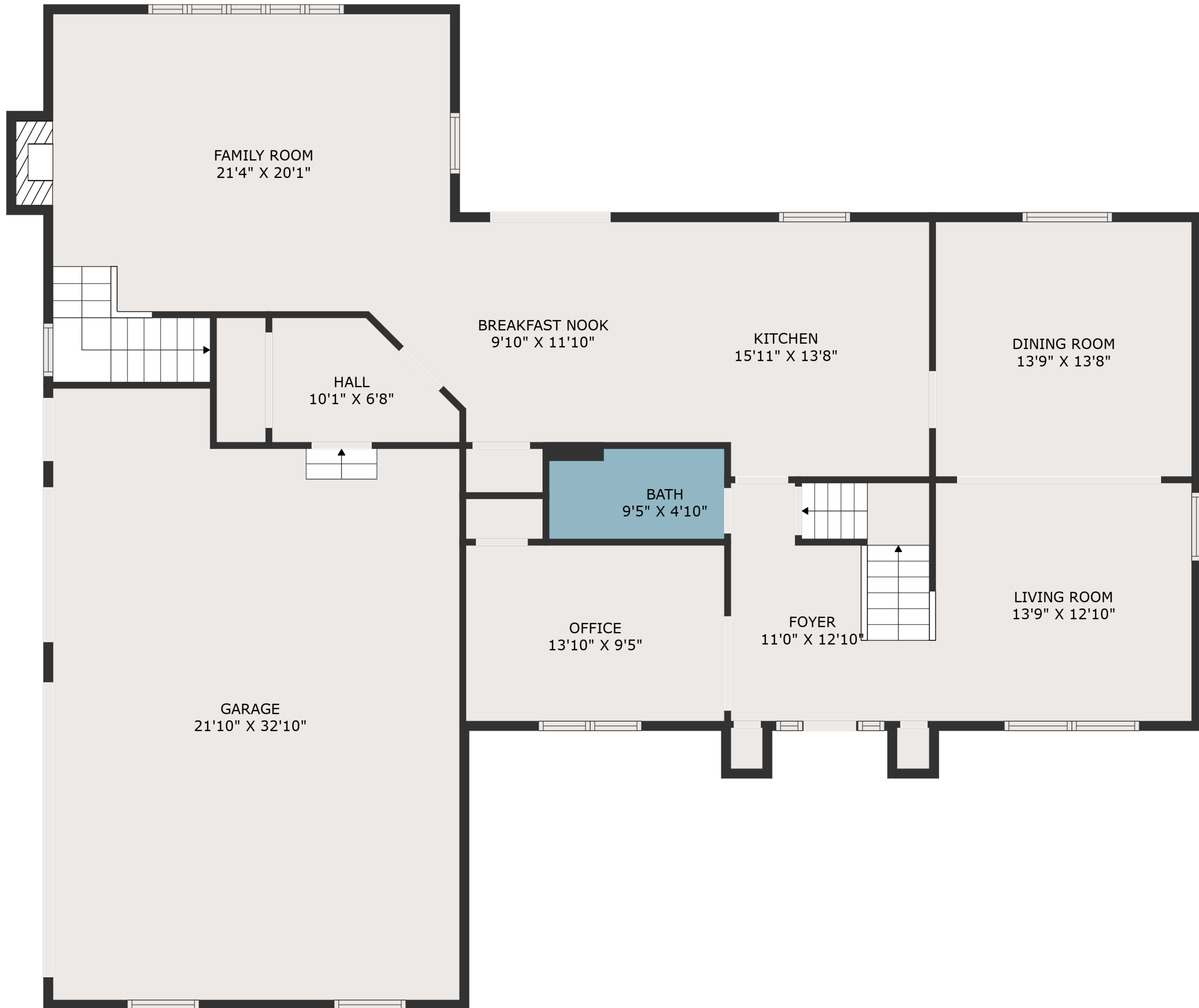
ELECTRICAL ROOM
10'1" X 16'0"

LAUNDRY
10'0" X 9'5"

BATH
5'8" X 5'6"

TOTAL: 4047 sq. ft
BELOW GROUND: 1065 sq. ft, FLOOR 2: 1527 sq. ft, FLOOR 3: 1455 sq. ft
EXCLUDED AREAS: ELECTRICAL ROOM: 102 sq. ft, STORAGE: 348 sq. ft, GARAGE: 673 sq. ft,
FIREPLACE: 11 sq. ft, OPEN TO BELOW: 368 sq. ft, LOW CEILING: 247 sq. ft,
ATTIC: 157 sq. ft

MEASUREMENTS ARE DEEMED HIGHLY RELIABLE BUT NOT GUARANTEED.



TOTAL: 4047 sq. ft

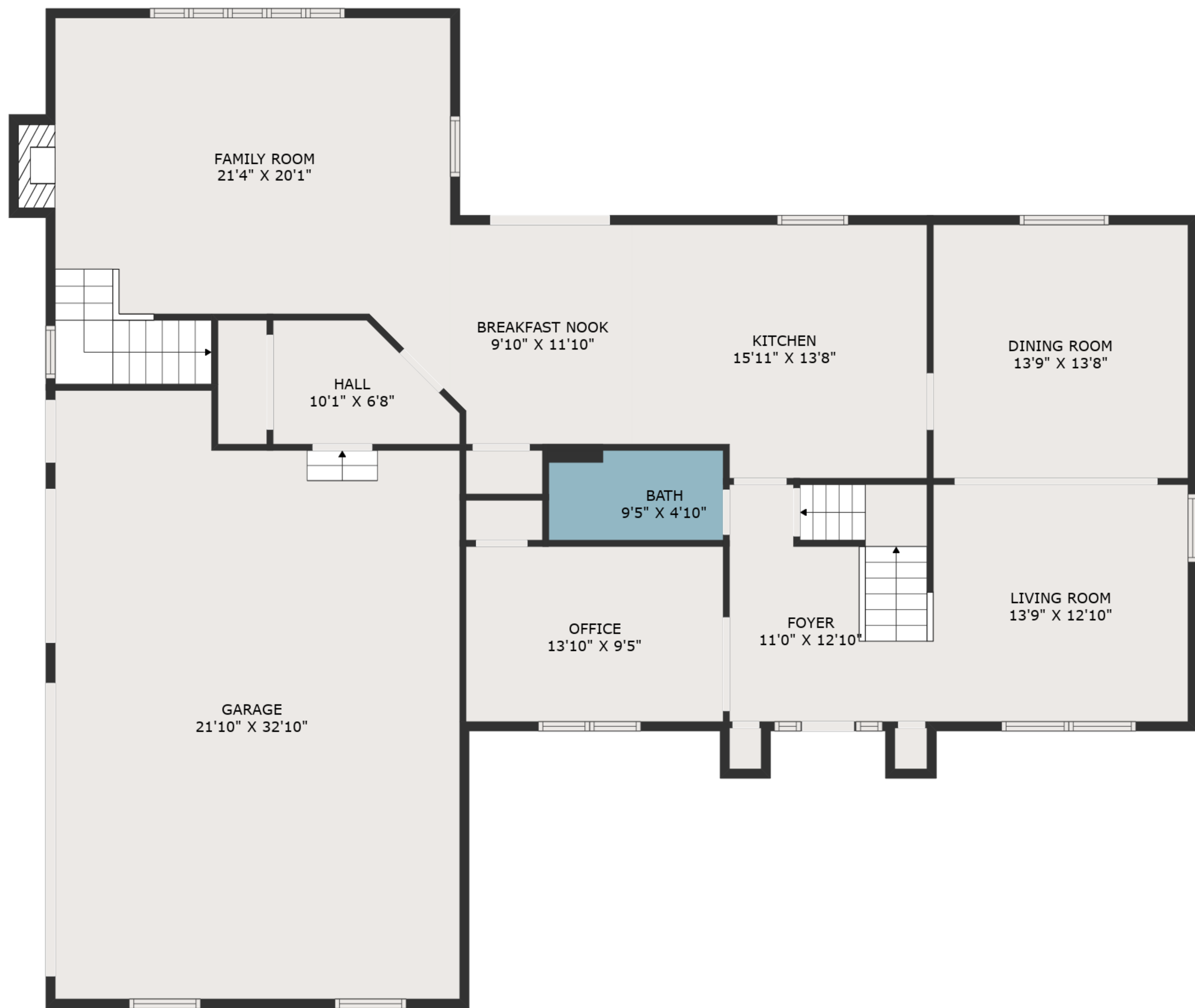
BELOW GROUND: 1065 sq. ft, FLOOR 2: 1527 sq. ft, FLOOR 3: 1455 sq. ft
EXCLUDED AREAS: ELECTRICAL ROOM: 102 sq. ft, STORAGE: 348 sq. ft, GARAGE: 673 sq. ft,
FIREPLACE: 11 sq. ft, OPEN TO BELOW: 368 sq. ft, LOW CEILING: 247 sq. ft,
ATTIC: 157 sq. ft

MEASUREMENTS ARE DEEMED HIGHLY RELIABLE BUT NOT GUARANTEED.



TOTAL: 4047 sq. ft
BELOW GROUND: 1065 sq. ft, FLOOR 2: 1527 sq. ft, FLOOR 3: 1455 sq. ft
EXCLUDED AREAS: ELECTRICAL ROOM: 102 sq. ft, STORAGE: 348 sq. ft, GARAGE: 673 sq. ft,
FIREPLACE: 11 sq. ft, OPEN TO BELOW: 368 sq. ft, LOW CEILING: 247 sq. ft,
ATTIC: 157 sq. ft

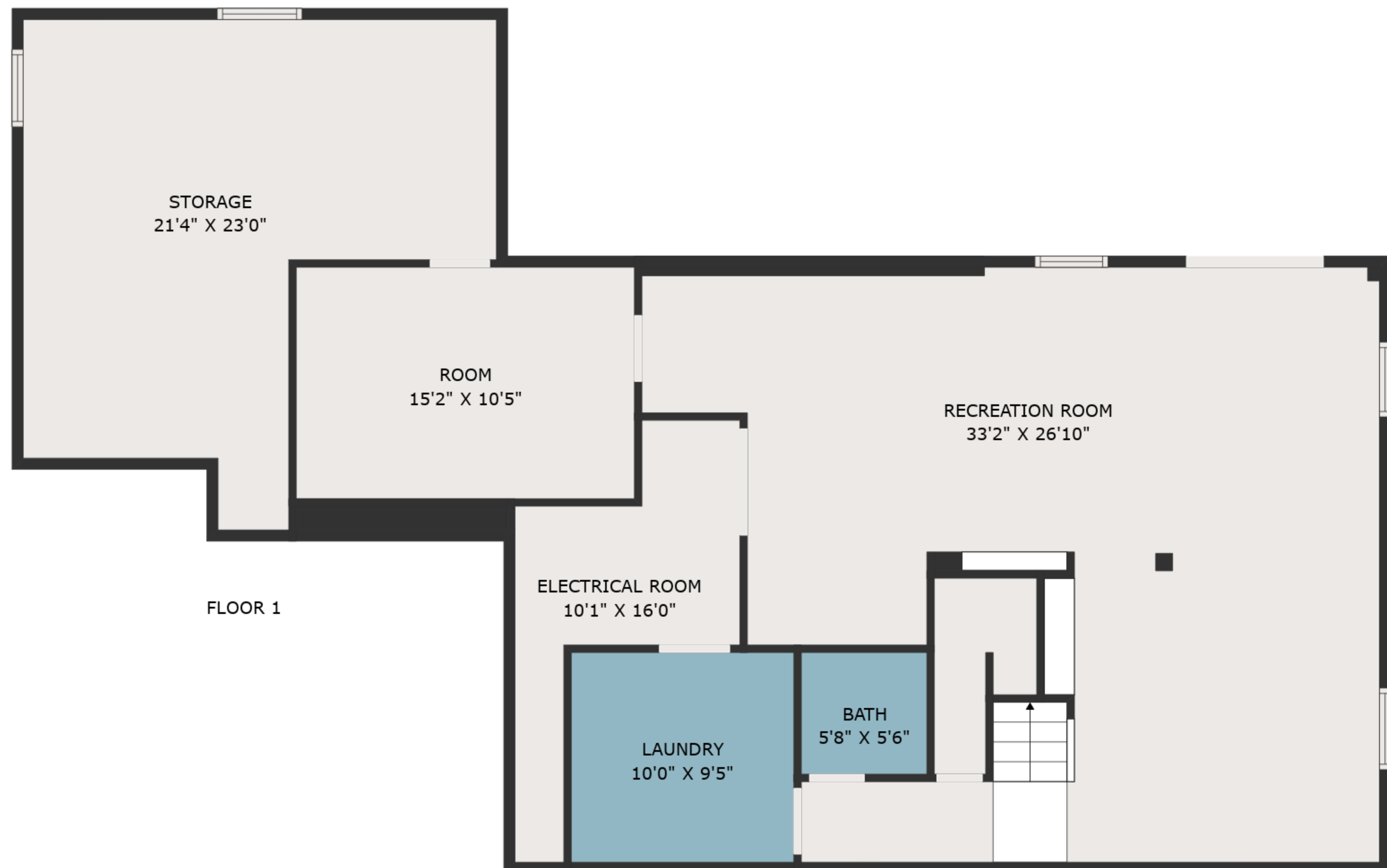
MEASUREMENTS ARE DEEMED HIGHLY RELIABLE BUT NOT GUARANTEED.



FLOOR 2



FLOOR 3



FLOOR 1

TOTAL: 4047 sq. ft

BELOW GROUND: 1065 sq. ft, FLOOR 2: 1527 sq. ft, FLOOR 3: 1455 sq. ft
 EXCLUDED AREAS: ELECTRICAL ROOM: 102 sq. ft, STORAGE: 348 sq. ft, GARAGE: 673 sq. ft,
 FIREPLACE: 11 sq. ft, OPEN TO BELOW: 368 sq. ft, LOW CEILING: 247 sq. ft,
 ATTIC: 157 sq. ft

MEASUREMENTS ARE DEEMED HIGHLY RELIABLE BUT NOT GUARANTEED.