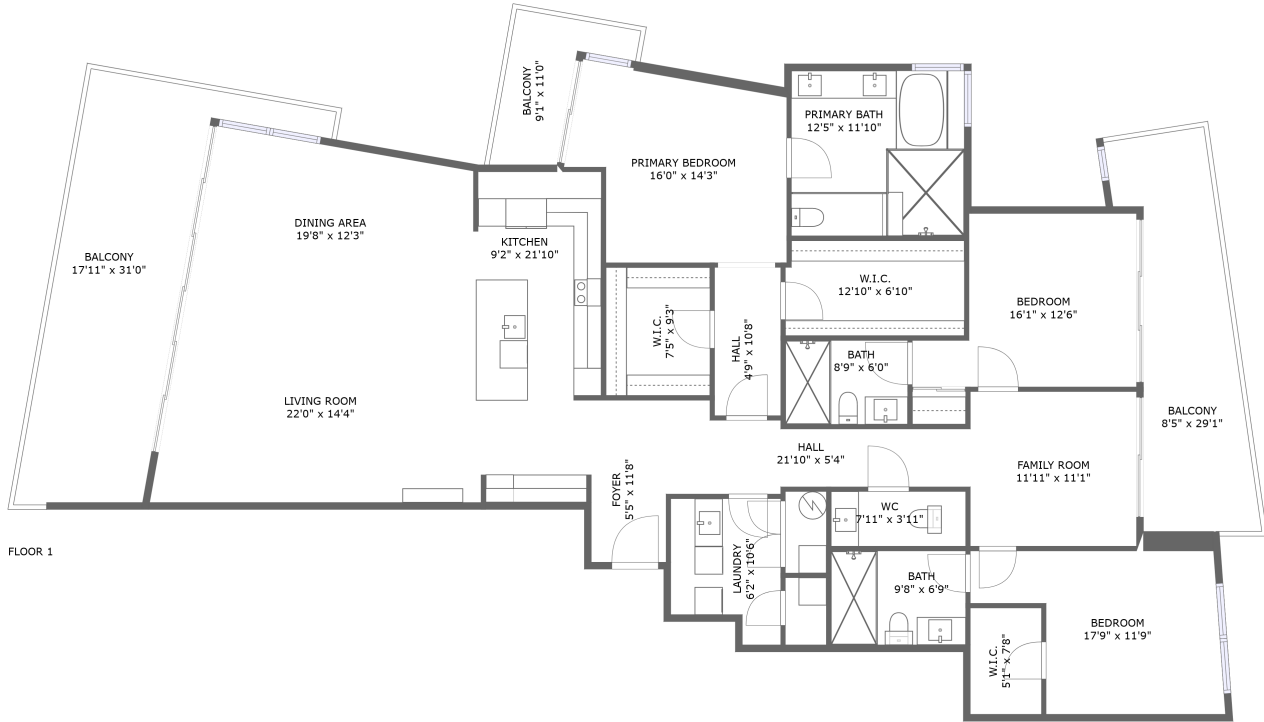



101 Central Avenue, Downtown St. Petersburg, St. Petersburg, Pinellas County, Florida, United States,



Property summary


 **0** Garages

 **3** Bedrooms

 **3** Bathrooms

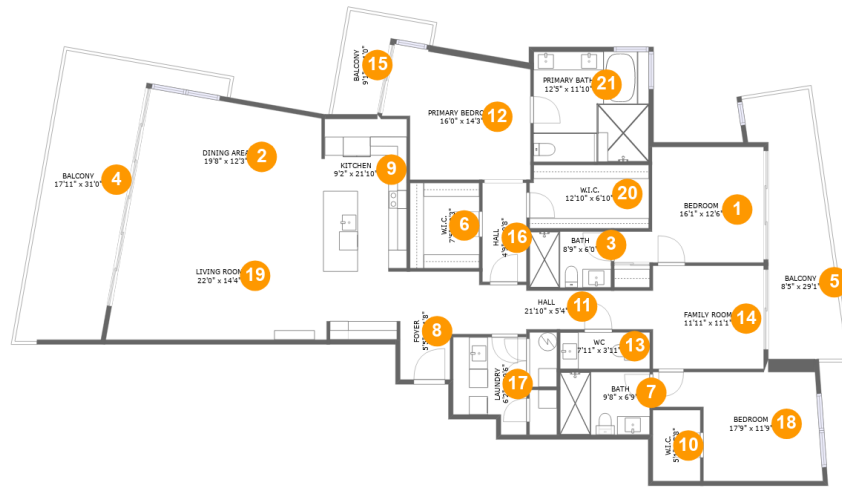
 **1** Half baths

 **1** Floors

 **2,311** Gross living area sqft

 **2,870** Total sqft

101 Central Avenue, Downtown St. Petersburg, St. Petersburg, Pinellas County, Florida, United States,



Room dimensions

Floor 1

Total sqft: 2870 Living area: 2311

#		Dimensions	sqft	Counted as living area
1	Bedroom	16'1" x 12'6"	164 sq. ft	Yes
2	Dining Room	19'8" x 12'3"	220 sq. ft	Yes
3	Bath	8'9" x 6'0"	53 sq. ft	Yes
4	Outdoor	17'11" x 31'0"	299 sq. ft	No
5	Outdoor	8'5" x 29'1"	198 sq. ft	No
6	Cl	7'5" x 9'3"	69 sq. ft	Yes
7	Bath	9'8" x 6'9"	65 sq. ft	Yes
8	Entry	5'5" x 11'8"	63 sq. ft	Yes
9	Kitchen	9'2" x 21'10"	210 sq. ft	Yes
10	Cl	5'1" x 7'8"	39 sq. ft	Yes
11	Hall	21'10" x 5'4"	105 sq. ft	Yes

**101 Central Avenue, Downtown St. Petersburg, St.
Petersburg, Pinellas County, Florida, United States,**

#		Dimensions	sqft	Counted as living area
12	Bedroom	16'0" x 14'3"	188 sq. ft	Yes
13	Bath	7'11" x 3'11"	38 sq. ft	Yes
14	Living Room	11'11" x 11'1"	133 sq. ft	Yes
15	Outdoor	9'1" x 11'0"	62 sq. ft	No
16	Hall	4'9" x 10'8"	51 sq. ft	Yes
17	Utility	6'2" x 10'6"	72 sq. ft	Yes
18	Bedroom	17'9" x 11'9"	167 sq. ft	Yes
19	Living Room	22'0" x 14'4"	314 sq. ft	Yes
20	Cl	12'10" x 6'10"	87 sq. ft	Yes
21	Bath	12'5" x 11'10"	147 sq. ft	Yes

101 Central Avenue, Downtown St. Petersburg, St. Petersburg, Pinellas County, Florida, United States,

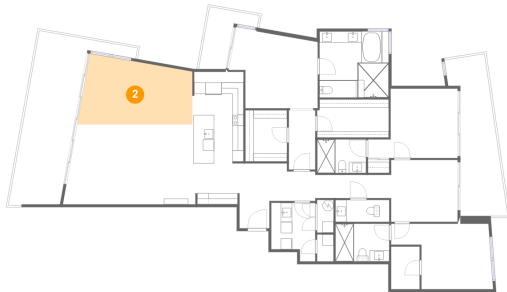
1 Floor 1 - Bedroom



Dimensions: 16'1" x 12'6"
Area: 164 sq. ft
Counted as living area: Yes

Heated: Yes
Finished: Yes
Enclosed: Yes
Contiguous: Yes
Permitted: Yes
Wet space: No
Addition: No
Conversion: No

2 Floor 1 - Dining Room



Dimensions: 19'8" x 12'3"
Area: 220 sq. ft
Counted as living area: Yes

Heated: Yes
Finished: Yes
Enclosed: Yes
Contiguous: Yes
Permitted: Yes
Wet space: No
Addition: No
Conversion: No

101 Central Avenue, Downtown St. Petersburg, St. Petersburg, Pinellas County, Florida, United States,

3 Floor 1 - Bath



Dimensions: 8'9" x 6'0"
Area: 53 sq. ft
Counted as living area: Yes

Heated: Yes
Finished: Yes
Enclosed: Yes
Contiguous: Yes
Permitted: Yes
Wet space: Yes
Addition: No
Conversion: No

4 Floor 1 - Outdoor



Dimensions: 17'11" x 31'0"
Area: 299 sq. ft
Counted as living area: No

Heated: No
Finished: Yes
Enclosed: No
Contiguous: Yes
Permitted: Yes
Wet space: No
Addition: No
Conversion: No

5 Floor 1 - Outdoor



Dimensions: 8'5" x 29'1"
Area: 198 sq. ft
Counted as living area: No

Heated: No
Finished: Yes
Enclosed: No
Contiguous: Yes
Permitted: Yes
Wet space: No
Addition: No
Conversion: No

101 Central Avenue, Downtown St. Petersburg, St. Petersburg, Pinellas County, Florida, United States,

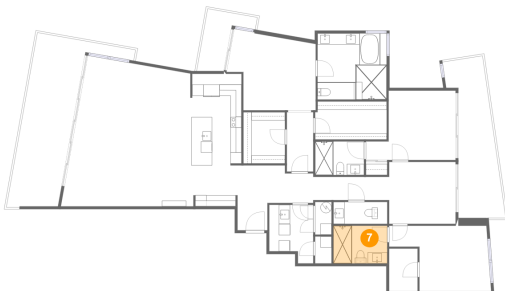
6 Floor 1 - Cl



Dimensions: 7'5" x 9'3"
Area: 69 sq. ft
Counted as living area: Yes

Heated: Yes
Finished: Yes
Enclosed: Yes
Contiguous: Yes
Permitted: Yes
Wet space: No
Addition: No
Conversion: No

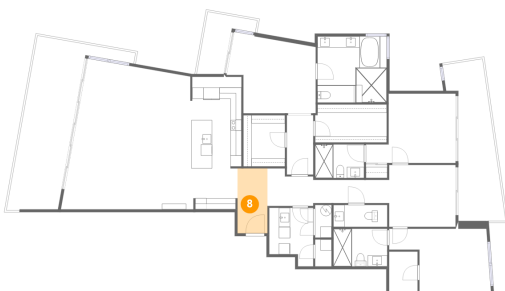
7 Floor 1 - Bath



Dimensions: 9'8" x 6'9"
Area: 65 sq. ft
Counted as living area: Yes

Heated: Yes
Finished: Yes
Enclosed: Yes
Contiguous: Yes
Permitted: Yes
Wet space: Yes
Addition: No
Conversion: No

8 Floor 1 - Entry

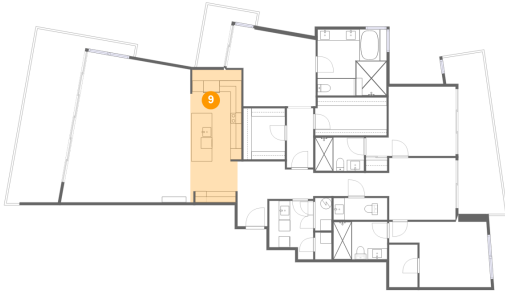


Dimensions: 5'5" x 11'8"
Area: 63 sq. ft
Counted as living area: Yes

Heated: Yes
Finished: Yes
Enclosed: Yes
Contiguous: Yes
Permitted: Yes
Wet space: No
Addition: No
Conversion: No

101 Central Avenue, Downtown St. Petersburg, St. Petersburg, Pinellas County, Florida, United States,

9 Floor 1 - Kitchen



Dimensions: 9'2" x 21'10"
Area: 210 sq. ft
Counted as living area: Yes

Heated: Yes
Finished: Yes
Enclosed: Yes
Contiguous: Yes
Permitted: Yes
Wet space: No
Addition: No
Conversion: No

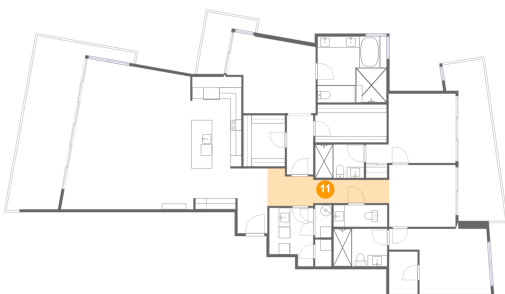
10 Floor 1 - Cl



Dimensions: 5'1" x 7'8"
Area: 39 sq. ft
Counted as living area: Yes

Heated: Yes
Finished: Yes
Enclosed: Yes
Contiguous: Yes
Permitted: Yes
Wet space: No
Addition: No
Conversion: No

11 Floor 1 - Hall



Dimensions: 21'10" x 5'4"
Area: 105 sq. ft
Counted as living area: Yes

Heated: Yes
Finished: Yes
Enclosed: Yes
Contiguous: Yes
Permitted: Yes
Wet space: No
Addition: No
Conversion: No

101 Central Avenue, Downtown St. Petersburg, St. Petersburg, Pinellas County, Florida, United States,

12 Floor 1 - Bedroom



Dimensions: 16'0" x 14'3"
Area: 188 sq. ft
Counted as living area: Yes

Heated: Yes
Finished: Yes
Enclosed: Yes
Contiguous: Yes
Permitted: Yes
Wet space: No
Addition: No
Conversion: No

13 Floor 1 - Bath



Dimensions: 7'11" x 3'11"
Area: 38 sq. ft
Counted as living area: Yes

Heated: Yes
Finished: Yes
Enclosed: Yes
Contiguous: Yes
Permitted: Yes
Wet space: Yes
Addition: No
Conversion: No

14 Floor 1 - Living Room



Dimensions: 11'11" x 11'1"
Area: 133 sq. ft
Counted as living area: Yes

Heated: Yes
Finished: Yes
Enclosed: Yes
Contiguous: Yes
Permitted: Yes
Wet space: No
Addition: No
Conversion: No

101 Central Avenue, Downtown St. Petersburg, St. Petersburg, Pinellas County, Florida, United States,

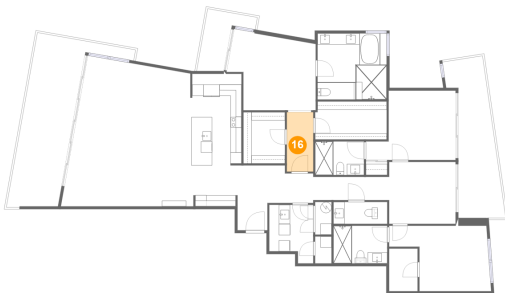
15 Floor 1 - Outdoor



Dimensions: 9'1" x 11'0"
Area: 62 sq. ft
Counted as living area: No

Heated: No
Finished: Yes
Enclosed: No
Contiguous: Yes
Permitted: Yes
Wet space: No
Addition: No
Conversion: No

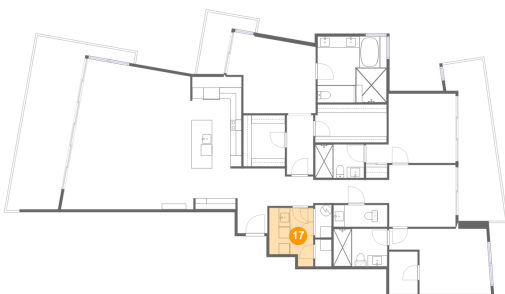
16 Floor 1 - Hall



Dimensions: 4'9" x 10'8"
Area: 51 sq. ft
Counted as living area: Yes

Heated: Yes
Finished: Yes
Enclosed: Yes
Contiguous: Yes
Permitted: Yes
Wet space: No
Addition: No
Conversion: No

17 Floor 1 - Utility



Dimensions: 6'2" x 10'6"
Area: 72 sq. ft
Counted as living area: Yes

Heated: Yes
Finished: Yes
Enclosed: Yes
Contiguous: Yes
Permitted: Yes
Wet space: No
Addition: No
Conversion: No

101 Central Avenue, Downtown St. Petersburg, St. Petersburg, Pinellas County, Florida, United States,

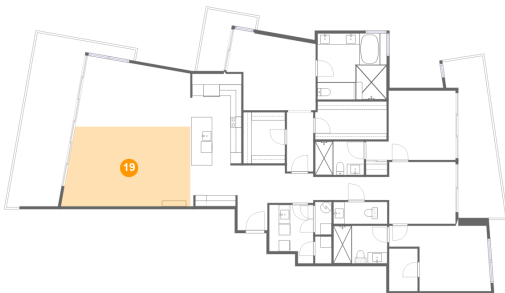
18 Floor 1 - Bedroom



Dimensions: 17'9" x 11'9"
Area: 167 sq. ft
Counted as living area: Yes

Heated: Yes
Finished: Yes
Enclosed: Yes
Contiguous: Yes
Permitted: Yes
Wet space: No
Addition: No
Conversion: No

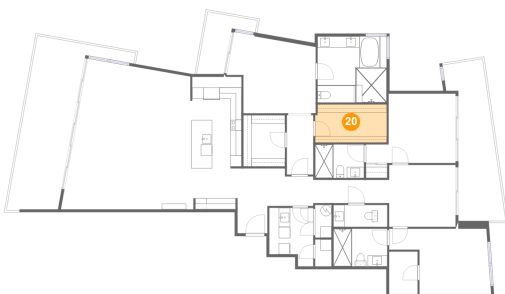
19 Floor 1 - Living Room



Dimensions: 22'0" x 14'4"
Area: 314 sq. ft
Counted as living area: Yes

Heated: Yes
Finished: Yes
Enclosed: Yes
Contiguous: Yes
Permitted: Yes
Wet space: No
Addition: No
Conversion: No

20 Floor 1 - Cl

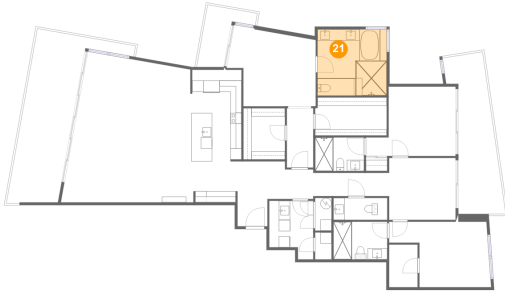


Dimensions: 12'10" x 6'10"
Area: 87 sq. ft
Counted as living area: Yes

Heated: Yes
Finished: Yes
Enclosed: Yes
Contiguous: Yes
Permitted: Yes
Wet space: No
Addition: No
Conversion: No

101 Central Avenue, Downtown St. Petersburg, St. Petersburg, Pinellas County, Florida, United States,

21 Floor 1 - Bath



Dimensions: 12'5" x 11'10"
Area: 147 sq. ft
Counted as living area: Yes

Heated: Yes
Finished: Yes
Enclosed: Yes
Contiguous: Yes
Permitted: Yes
Wet space: Yes
Addition: No
Conversion: No