

# 1637 Mill Pond Drive, Woodbridge, Salem, Roanoke County, Virginia, United States, 24153

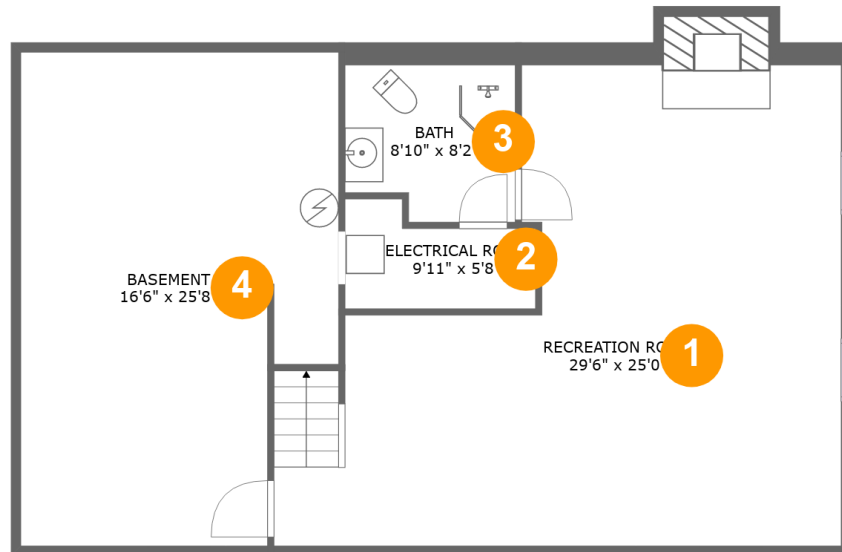


## Property Summary

**1** garages    **4** bedrooms    **3** bathrooms    **1** half baths

**3** floors    **3,409** Gross Living Area sqft    **4,833** total sqft

# 1637 Mill Pond Drive, Woodbridge, Salem, Roanoke County, Virginia, United States, 24153



## Room Dimensions

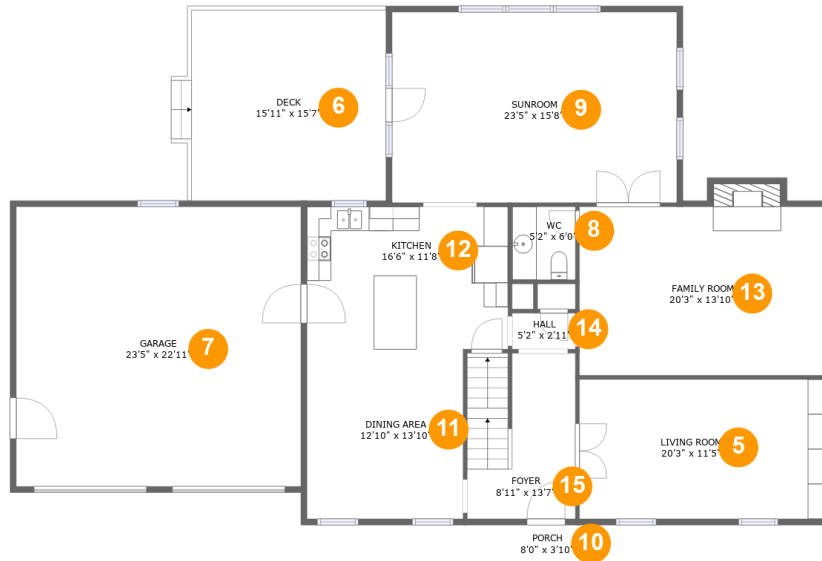
Floor 1

Total sqft: 1173

Living area: 614

#	Room name	Dimensions	Area (sqft)	Counted as Living Area
1	Recreation Room	29'6" x 25'0"	566 sq. ft	Yes
2	Electrical Room	9'11" x 5'8"	46 sq. ft	No
3	Bath	8'10" x 8'2"	67 sq. ft	No
4	Basement	16'6" x 25'8"	387 sq. ft	No

**1637 Mill Pond Drive, Woodbridge, Salem,  
Roanoke County, Virginia, United States, 24153**



**Room Dimensions**

**Floor 2**

**Total sqft: 2416**

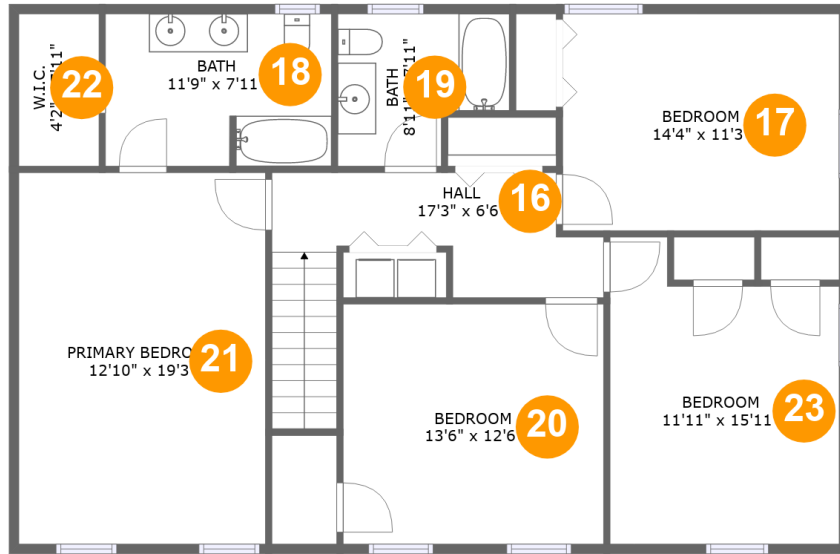
**Living area: 1551**

#	Room name	Dimensions	Area (sqft)	Counted as Living Area
5	Living Room	20'3" x 11'5"	232 sq. ft	Yes
6	Deck	15'11" x 15'7"	250 sq. ft	No
7	Garage	23'5" x 22'11"	537 sq. ft	No
8	Wc	5'2" x 6'0"	31 sq. ft	Yes
9	Sunroom	23'5" x 15'8"	366 sq. ft	Yes
10	Porch	8'0" x 3'10"	31 sq. ft	No
11	Dining Area	12'10" x 13'10"	179 sq. ft	Yes
12	Kitchen	16'6" x 11'8"	193 sq. ft	Yes
13	Family Room	20'3" x 13'10"	291 sq. ft	Yes
14	Hall	5'2" x 2'11"	15 sq. ft	Yes
15	Foyer	8'11" x 13'7"	119 sq. ft	Yes

Scan captured on Mon, 19 Aug 2024 19:01:28 GMT

Information is calculated by CubiCasa technology; deemed highly reliable but not guaranteed.

**1637 Mill Pond Drive, Woodbridge, Salem,  
Roanoke County, Virginia, United States, 24153**



**Room Dimensions**

**Floor 3**

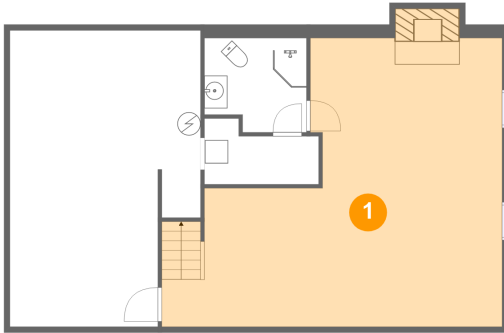
**Total sqft: 1244**

**Living area: 1244**

#	Room name	Dimensions	Area (sqft)	Counted as Living Area
16	Hall	17'3" x 6'6"	110 sq. ft	Yes
17	Bedroom	14'4" x 11'3"	162 sq. ft	Yes
18	Bath	11'9" x 7'11"	92 sq. ft	Yes
19	Bath	8'11" x 7'11"	60 sq. ft	Yes
20	Bedroom	13'6" x 12'6"	169 sq. ft	Yes
21	Primary Bedroom	12'10" x 19'3"	247 sq. ft	Yes
22	W.i.c.	4'2" x 7'11"	33 sq. ft	Yes
23	Bedroom	11'11" x 15'11"	167 sq. ft	Yes

**1637 Mill Pond Drive, Woodbridge, Salem,  
Roanoke County, Virginia, United States, 24153**

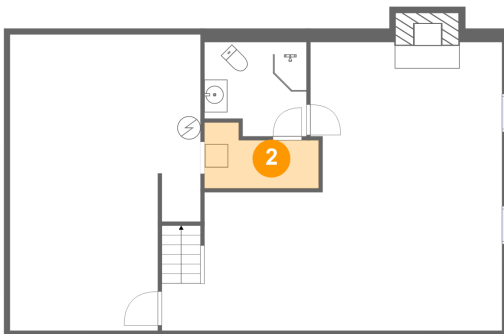
**1 Floor 1 - Recreation Room**



Dimensions: 29'6" x 25'0"  
Area: 566 sq. ft  
Counted as Living Area:  
Yes

Heated: Yes  
Finished: Yes  
Enclosed: Yes  
Contiguous:  
Yes  
Permitted: Yes  
Wet Space: No  
Addition: No  
Conversion: No

**2 Floor 1 - Electrical Room**

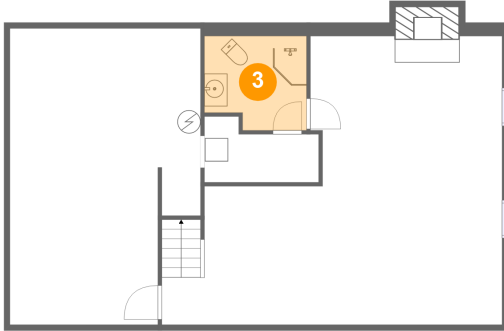


Dimensions: 9'11" x 5'8"  
Area: 46 sq. ft  
Counted as Living Area: No

Heated: No  
Finished: No  
Enclosed: Yes  
Contiguous: Yes  
Permitted: Yes  
Wet Space: No  
Addition: No  
Conversion: No

**1637 Mill Pond Drive, Woodbridge, Salem,  
Roanoke County, Virginia, United States, 24153**

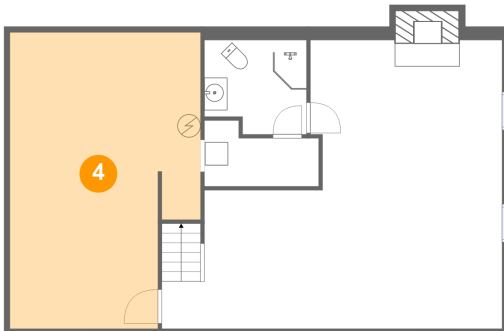
**3 Floor 1 - Bath**



Dimensions: 8'10" x 8'2"  
Area: 67 sq. ft  
Counted as Living Area: No

Heated: Yes  
Finished: Yes  
Enclosed: Yes  
Contiguous: No  
Permitted: Yes  
Wet Space: Yes  
Addition: No  
Conversion: No

**4 Floor 1 - Basement**



Dimensions: 16'6" x 25'8"  
Area: 387 sq. ft  
Counted as Living Area: No

Heated: Yes  
Finished: No  
Enclosed: Yes  
Contiguous: Yes  
Permitted: Yes  
Wet Space: No  
Addition: No  
Conversion: No

**5 Floor 2 - Living Room**

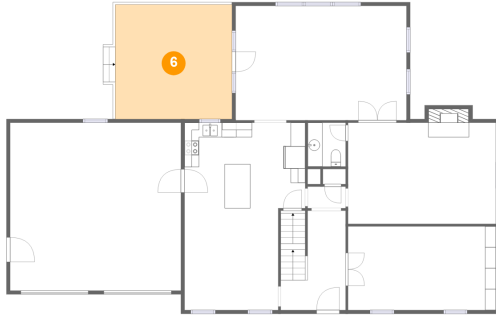


Dimensions: 20'3" x 11'5"  
Area: 232 sq. ft  
Counted as Living Area:  
Yes

Heated: Yes  
Finished: Yes  
Enclosed: Yes  
Contiguous:  
Yes  
Permitted: Yes  
Wet Space: No  
Addition: No  
Conversion: No

**1637 Mill Pond Drive, Woodbridge, Salem,  
Roanoke County, Virginia, United States, 24153**

**6 Floor 2 - Deck**



Dimensions: 15'11" x 15'7"  
Area: 250 sq. ft  
Counted as Living Area: No

Heated: No  
Finished: Yes  
Enclosed: No  
Contiguous: Yes  
Permitted: Yes  
Wet Space: No  
Addition: No  
Conversion: No

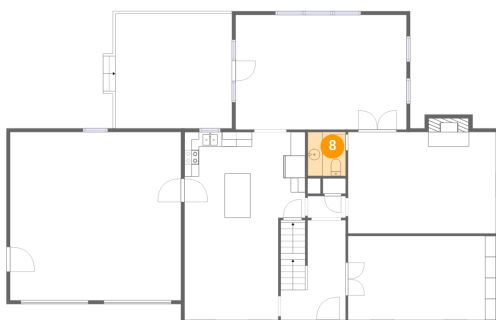
**7 Floor 2 - Garage**



Dimensions: 23'5" x 22'11"  
Area: 537 sq. ft  
Counted as Living Area: No

Heated: No  
Finished: No  
Enclosed: Yes  
Contiguous: Yes  
Permitted: Yes  
Wet Space: No  
Addition: No  
Conversion: No

**8 Floor 2 - Wc**

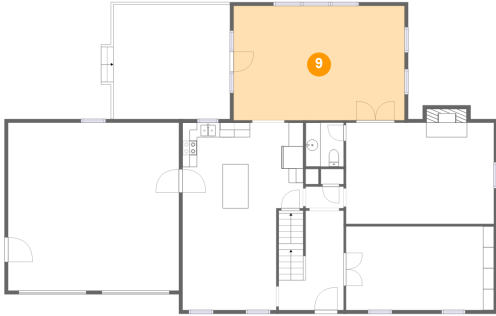


Dimensions: 5'2" x 6'0"  
Area: 31 sq. ft  
Counted as Living Area:  
Yes

Heated: Yes  
Finished: Yes  
Enclosed: Yes  
Contiguous:  
Yes  
Permitted: Yes  
Wet Space: Yes  
Addition: No  
Conversion: No

**1637 Mill Pond Drive, Woodbridge, Salem,  
Roanoke County, Virginia, United States, 24153**

**9 Floor 2 - Sunroom**



**Dimensions:** 23'5" x 15'8"  
**Area:** 366 sq. ft  
**Counted as Living Area:**  
Yes

**Heated:** Yes  
**Finished:** Yes  
**Enclosed:** Yes  
**Contiguous:**  
Yes  
**Permitted:** Yes  
**Wet Space:** No  
**Addition:** No  
**Conversion:** No

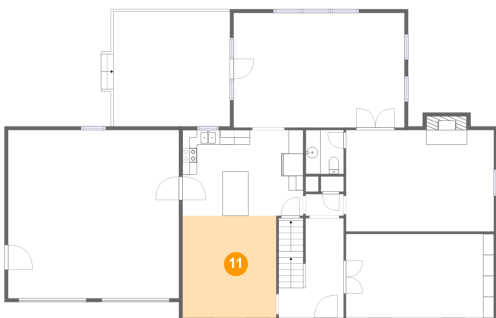
**10 Floor 2 - Porch**



**Dimensions:** 8'0" x 3'10"  
**Area:** 31 sq. ft  
**Counted as Living Area:** No

**Heated:** No  
**Finished:** Yes  
**Enclosed:** No  
**Contiguous:** Yes  
**Permitted:** Yes  
**Wet Space:** No  
**Addition:** No  
**Conversion:** No

**11 Floor 2 - Dining Area**



**Dimensions:** 12'10" x 13'10"  
**Area:** 179 sq. ft  
**Counted as Living Area:**  
Yes

**Heated:** Yes  
**Finished:** Yes  
**Enclosed:** Yes  
**Contiguous:**  
Yes  
**Permitted:** Yes  
**Wet Space:** No  
**Addition:** No  
**Conversion:** No



**1637 Mill Pond Drive, Woodbridge, Salem,  
Roanoke County, Virginia, United States, 24153**

**12 Floor 2 - Kitchen**



Dimensions: 16'6" x 11'8"  
Area: 193 sq. ft  
Counted as Living Area:  
Yes

Heated: Yes  
Finished: Yes  
Enclosed: Yes  
Contiguous:  
Yes  
Permitted: Yes  
Wet Space: No  
Addition: No  
Conversion: No

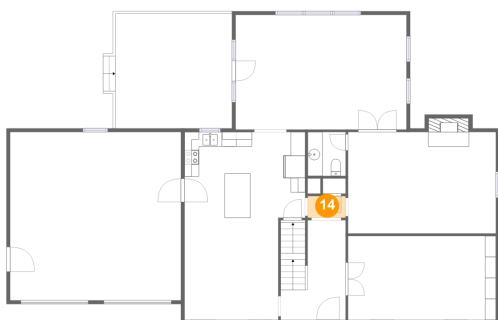
**13 Floor 2 - Family Room**



Dimensions: 20'3" x 13'10"  
Area: 291 sq. ft  
Counted as Living Area:  
Yes

Heated: Yes  
Finished: Yes  
Enclosed: Yes  
Contiguous:  
Yes  
Permitted: Yes  
Wet Space: No  
Addition: No  
Conversion: No

**14 Floor 2 - Hall**



Dimensions: 5'2" x 2'11"  
Area: 15 sq. ft  
Counted as Living Area:  
Yes

Heated: Yes  
Finished: Yes  
Enclosed: Yes  
Contiguous:  
Yes  
Permitted: Yes  
Wet Space: No  
Addition: No  
Conversion: No

**1637 Mill Pond Drive, Woodbridge, Salem,  
Roanoke County, Virginia, United States, 24153**

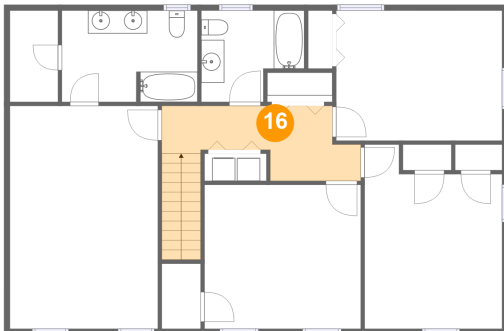
**15 Floor 2 - Foyer**



Dimensions: 8'11" x 13'7"  
Area: 119 sq. ft  
Counted as Living Area:  
Yes

Heated: Yes  
Finished: Yes  
Enclosed: Yes  
Contiguous:  
Yes  
Permitted: Yes  
Wet Space: No  
Addition: No  
Conversion: No

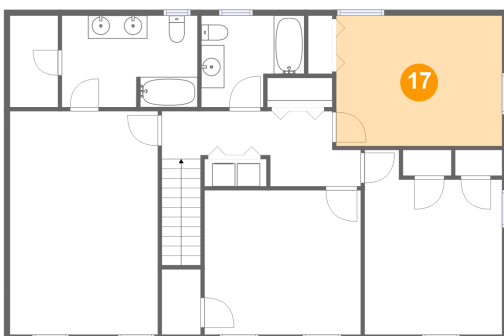
**16 Floor 3 - Hall**



Dimensions: 17'3" x 6'6"  
Area: 110 sq. ft  
Counted as Living Area:  
Yes

Heated: Yes  
Finished: Yes  
Enclosed: Yes  
Contiguous:  
Yes  
Permitted: Yes  
Wet Space: No  
Addition: No  
Conversion: No

**17 Floor 3 - Bedroom**

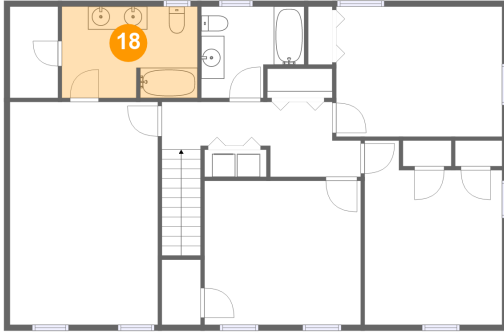


Dimensions: 14'4" x 11'3"  
Area: 162 sq. ft  
Counted as Living Area:  
Yes

Heated: Yes  
Finished: Yes  
Enclosed: Yes  
Contiguous:  
Yes  
Permitted: Yes  
Wet Space: No  
Addition: No  
Conversion: No

**1637 Mill Pond Drive, Woodbridge, Salem,  
Roanoke County, Virginia, United States, 24153**

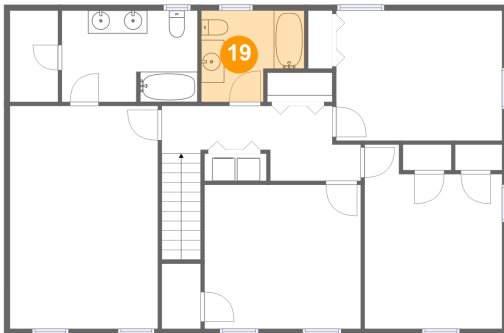
**18 Floor 3 - Bath**



Dimensions: 11'9" x 7'11"  
Area: 92 sq. ft  
Counted as Living Area:  
Yes

Heated: Yes  
Finished: Yes  
Enclosed: Yes  
Contiguous:  
Yes  
Permitted: Yes  
Wet Space: Yes  
Addition: No  
Conversion: No

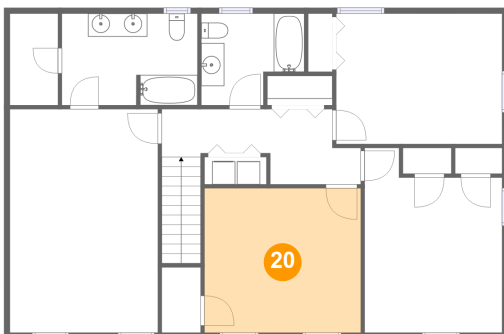
**19 Floor 3 - Bath**



Dimensions: 8'11" x 7'11"  
Area: 60 sq. ft  
Counted as Living Area:  
Yes

Heated: Yes  
Finished: Yes  
Enclosed: Yes  
Contiguous:  
Yes  
Permitted: Yes  
Wet Space: Yes  
Addition: No  
Conversion: No

**20 Floor 3 - Bedroom**

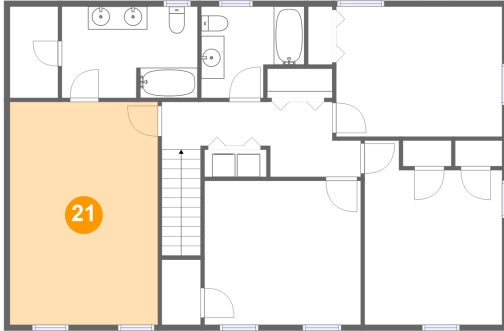


Dimensions: 13'6" x 12'6"  
Area: 169 sq. ft  
Counted as Living Area:  
Yes

Heated: Yes  
Finished: Yes  
Enclosed: Yes  
Contiguous:  
Yes  
Permitted: Yes  
Wet Space: No  
Addition: No  
Conversion: No

**1637 Mill Pond Drive, Woodbridge, Salem,  
Roanoke County, Virginia, United States, 24153**

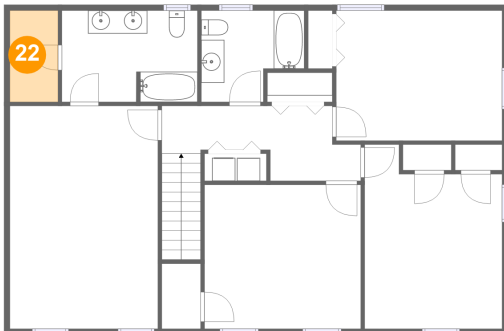
**21 Floor 3 - Primary Bedroom**



Dimensions: 12'10" x 19'3"  
Area: 247 sq. ft  
Counted as Living Area:  
Yes

Heated: Yes  
Finished: Yes  
Enclosed: Yes  
Contiguous:  
Yes  
Permitted: Yes  
Wet Space: No  
Addition: No  
Conversion: No

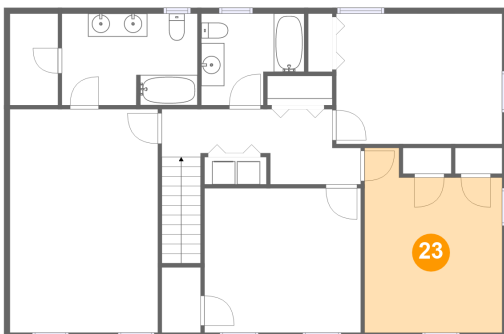
**22 Floor 3 - W.i.c.**



Dimensions: 4'2" x 7'11"  
Area: 33 sq. ft  
Counted as Living Area:  
Yes

Heated: Yes  
Finished: Yes  
Enclosed: Yes  
Contiguous:  
Yes  
Permitted: Yes  
Wet Space: No  
Addition: No  
Conversion: No

**23 Floor 3 - Bedroom**



Dimensions: 11'11" x 15'11"  
Area: 167 sq. ft  
Counted as Living Area:  
Yes

Heated: Yes  
Finished: Yes  
Enclosed: Yes  
Contiguous:  
Yes  
Permitted: Yes  
Wet Space: No  
Addition: No  
Conversion: No