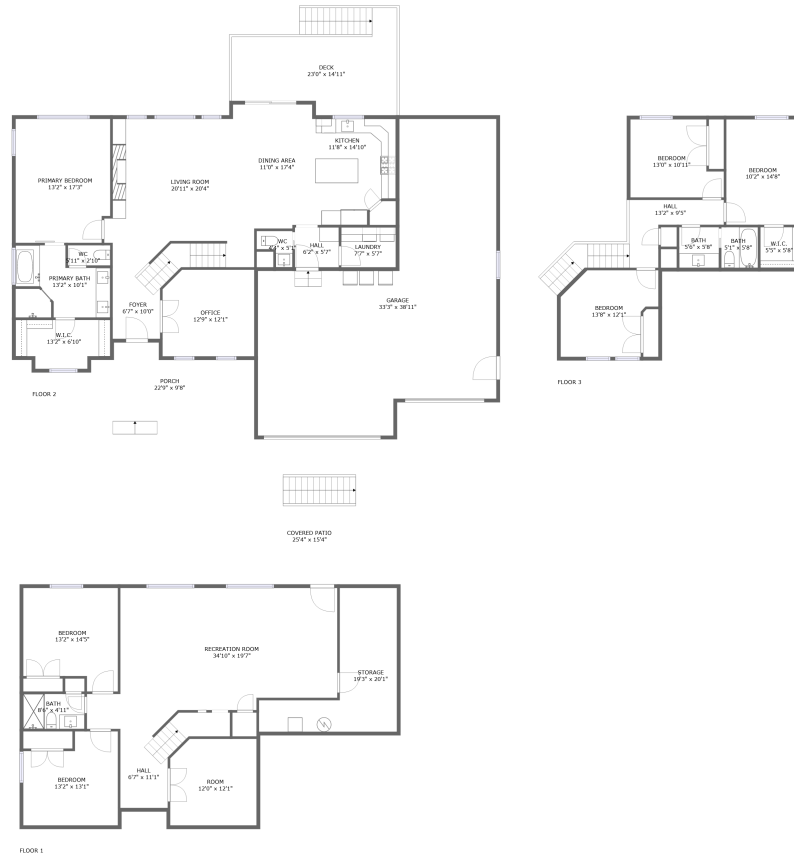



# 3148 Clearwater Street, Pocatello, Bannock County, Idaho, United States, 83201



## Property Summary

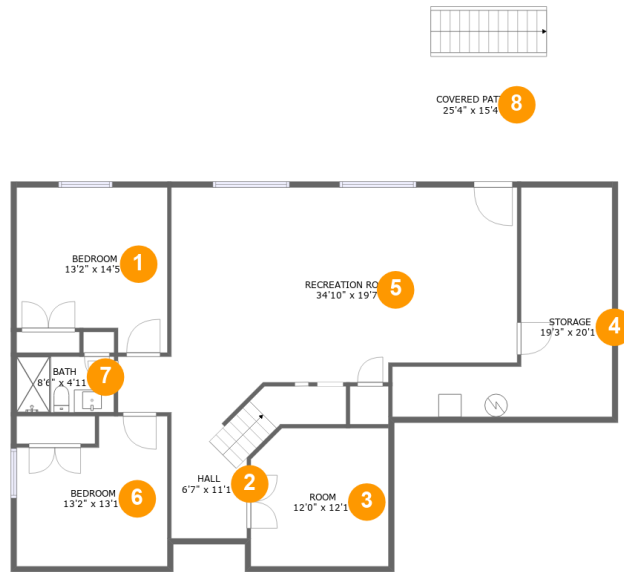
 **1** garages     **6** bedrooms     **3** bathrooms     **1** half baths

 **3** floors

 **3,676** Gross Living Area sqft

 **5,748** total sqft

# 3148 Clearwater Street, Pocatello, Bannock County, Idaho, United States, 83201



## Room Dimensions

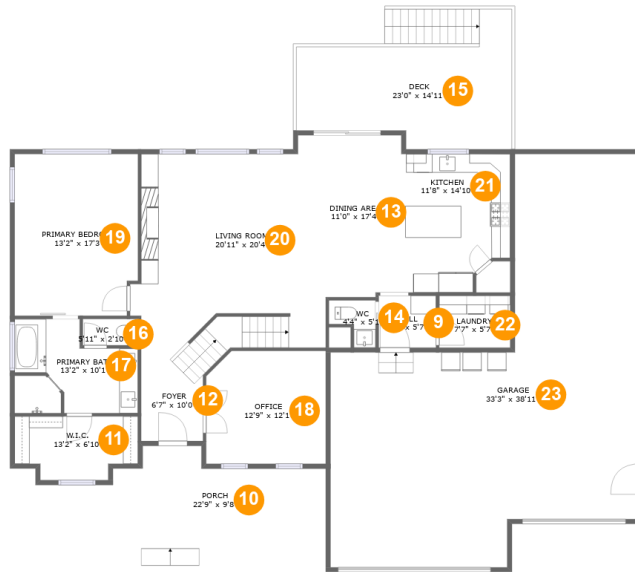
Floor 1

Total sqft: 1927

Living area: 1305

#	Room name	Dimensions	Area (sqft)	Counted as Living Area
1	Bedroom	13'2" x 14'5"	171 sq. ft	Yes
2	Hall	6'7" x 11'1"	90 sq. ft	Yes
3	Room	12'0" x 12'1"	142 sq. ft	Yes
4	Storage	19'3" x 20'1"	209 sq. ft	No
5	Recreation Room	34'10" x 19'7"	551 sq. ft	Yes
6	Bedroom	13'2" x 13'1"	153 sq. ft	Yes
7	Bath	8'6" x 4'11"	42 sq. ft	Yes
8	Covered Patio	25'4" x 15'4"	390 sq. ft	No

# 3148 Clearwater Street, Pocatello, Bannock County, Idaho, United States, 83201



## Room Dimensions

Floor 2

Total sqft: 3069

Living area: 1619

#	Room name	Dimensions	Area (sqft)	Counted as Living Area
9	Hall	6'2" x 5'7"	34 sq. ft	Yes
10	Porch	22'9" x 9'8"	181 sq. ft	No
11	W.i.c.	13'2" x 6'10"	80 sq. ft	Yes
12	Foyer	6'7" x 10'0"	70 sq. ft	Yes
13	Dining Area	11'0" x 17'4"	167 sq. ft	Yes
14	Wc	4'4" x 5'1"	19 sq. ft	Yes
15	Deck	23'0" x 14'11"	242 sq. ft	No
16	Wc	5'11" x 2'10"	17 sq. ft	Yes
17	Primary Bath	13'2" x 10'1"	111 sq. ft	Yes
18	Office	12'9" x 12'1"	151 sq. ft	Yes
19	Primary Bedroom	13'2" x 17'3"	224 sq. ft	Yes

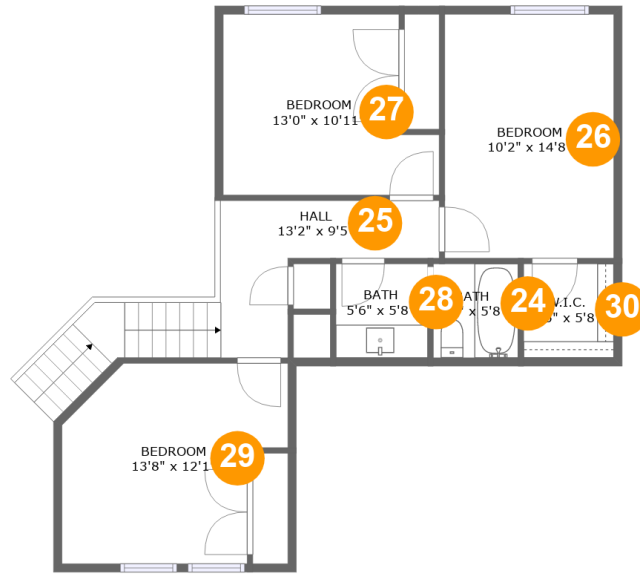
Scan captured on Tue, 20 Aug 2024 18:56:14 GMT

Information is calculated by CubiCasa technology; deemed highly reliable but not guaranteed.

**3148 Clearwater Street, Pocatello, Bannock  
County, Idaho, United States, 83201**

#	Room name	Dimensions	Area (sqft)	Counted as Living Area
20	Living Room	20'11" x 20'4"	390 sq. ft	Yes
21	Kitchen	11'8" x 14'10"	159 sq. ft	Yes
22	Laundry	7'7" x 5'7"	42 sq. ft	Yes
23	Garage	33'3" x 38'11"	976 sq. ft	No

**3148 Clearwater Street, Pocatello, Bannock County, Idaho, United States, 83201**



**Room Dimensions**

**Floor 3**

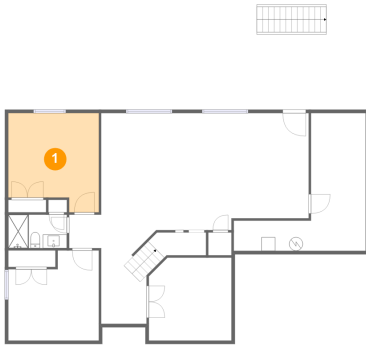
**Total sqft: 752**

**Living area: 752**

#	Room name	Dimensions	Area (sqft)	Counted as Living Area
24	Bath	5'1" x 5'8"	29 sq. ft	Yes
25	Hall	13'2" x 9'5"	114 sq. ft	Yes
26	Bedroom	10'2" x 14'8"	150 sq. ft	Yes
27	Bedroom	13'0" x 10'11"	124 sq. ft	Yes
28	Bath	5'6" x 5'8"	31 sq. ft	Yes
29	Bedroom	13'8" x 12'1"	141 sq. ft	Yes
30	W.i.c.	5'5" x 5'8"	31 sq. ft	Yes

# 3148 Clearwater Street, Pocatello, Bannock County, Idaho, United States, 83201

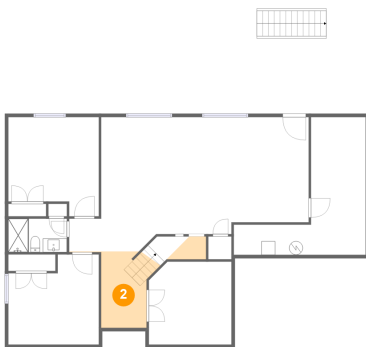
## 1 Floor 1 - Bedroom



Dimensions: 13'2" x 14'5"  
Area: 171 sq. ft  
Counted as Living Area:  
Yes

Heated: Yes  
Finished: Yes  
Enclosed: Yes  
Contiguous:  
Yes  
Permitted: Yes  
Wet Space: No  
Addition: No  
Conversion: No

## 2 Floor 1 - Hall

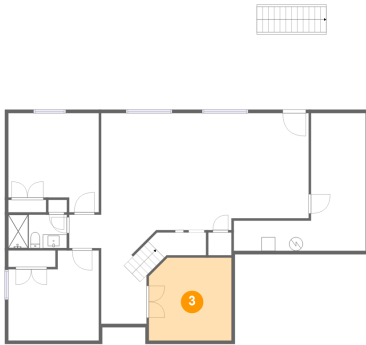


Dimensions: 6'7" x 11'1"  
Area: 90 sq. ft  
Counted as Living Area:  
Yes

Heated: Yes  
Finished: Yes  
Enclosed: Yes  
Contiguous:  
Yes  
Permitted: Yes  
Wet Space: No  
Addition: No  
Conversion: No

# 3148 Clearwater Street, Pocatello, Bannock County, Idaho, United States, 83201

## 3 Floor 1 - Room



Dimensions: 12'0" x 12'1"  
Area: 142 sq. ft  
Counted as Living Area:  
Yes

Heated: Yes  
Finished: Yes  
Enclosed: Yes  
Contiguous:  
Yes  
Permitted: Yes  
Wet Space: No  
Addition: No  
Conversion: No

## 4 Floor 1 - Storage



Dimensions: 19'3" x 20'1"  
Area: 209 sq. ft  
Counted as Living Area: No

Heated: No  
Finished: No  
Enclosed: No  
Contiguous: Yes  
Permitted: Yes  
Wet Space: No  
Addition: No  
Conversion: No

## 5 Floor 1 - Recreation Room

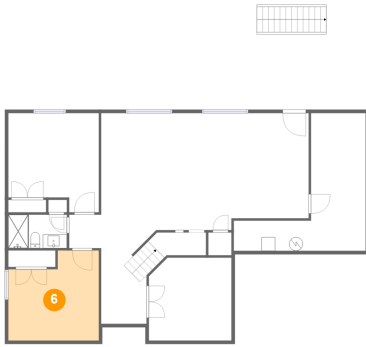


Dimensions: 34'10" x 19'7"  
Area: 551 sq. ft  
Counted as Living Area:  
Yes

Heated: Yes  
Finished: Yes  
Enclosed: Yes  
Contiguous:  
Yes  
Permitted: Yes  
Wet Space: No  
Addition: No  
Conversion: No

# 3148 Clearwater Street, Pocatello, Bannock County, Idaho, United States, 83201

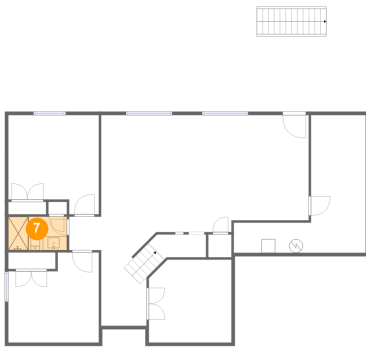
## 6 Floor 1 - Bedroom



Dimensions: 13'2" x 13'1"  
Area: 153 sq. ft  
Counted as Living Area:  
Yes

Heated: Yes  
Finished: Yes  
Enclosed: Yes  
Contiguous:  
Yes  
Permitted: Yes  
Wet Space: No  
Addition: No  
Conversion: No

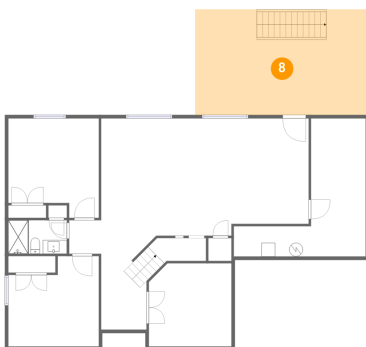
## 7 Floor 1 - Bath



Dimensions: 8'6" x 4'11"  
Area: 42 sq. ft  
Counted as Living Area:  
Yes

Heated: Yes  
Finished: Yes  
Enclosed: Yes  
Contiguous:  
Yes  
Permitted: Yes  
Wet Space: Yes  
Addition: No  
Conversion: No

## 8 Floor 1 - Covered Patio



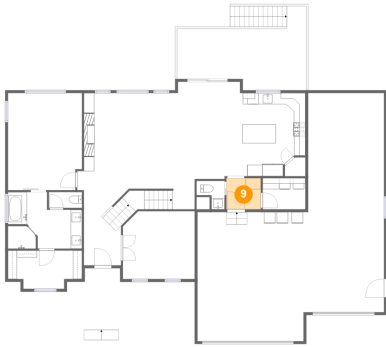
Dimensions: 25'4" x 15'4"  
Area: 390 sq. ft  
Counted as Living Area: No

Heated: No  
Finished: Yes  
Enclosed: No  
Contiguous: Yes  
Permitted: Yes  
Wet Space: No  
Addition: No  
Conversion: No



# 3148 Clearwater Street, Pocatello, Bannock County, Idaho, United States, 83201

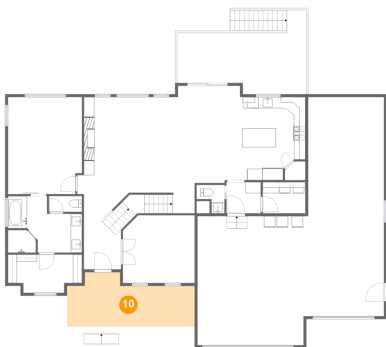
## 9 Floor 2 - Hall



Dimensions: 6'2" x 5'7"  
Area: 34 sq. ft  
Counted as Living Area:  
Yes

Heated: Yes  
Finished: Yes  
Enclosed: Yes  
Contiguous:  
Yes  
Permitted: Yes  
Wet Space: No  
Addition: No  
Conversion: No

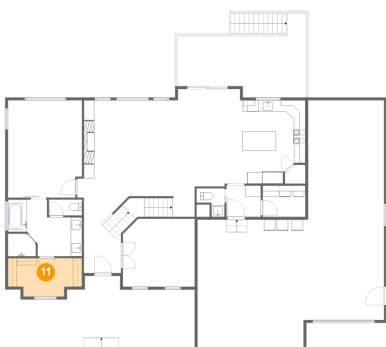
## 10 Floor 2 - Porch



Dimensions: 22'9" x 9'8"  
Area: 181 sq. ft  
Counted as Living Area: No

Heated: No  
Finished: Yes  
Enclosed: No  
Contiguous: Yes  
Permitted: Yes  
Wet Space: No  
Addition: No  
Conversion: No

## 11 Floor 2 - W.i.c.

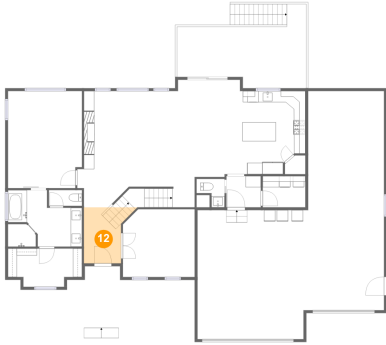


Dimensions: 13'2" x 6'10"  
Area: 80 sq. ft  
Counted as Living Area:  
Yes

Heated: Yes  
Finished: Yes  
Enclosed: Yes  
Contiguous:  
Yes  
Permitted: Yes  
Wet Space: No  
Addition: No  
Conversion: No

# 3148 Clearwater Street, Pocatello, Bannock County, Idaho, United States, 83201

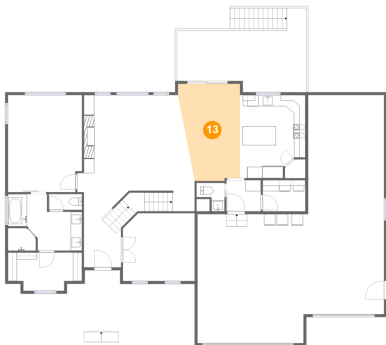
## 12 Floor 2 - Foyer



Dimensions: 6'7" x 10'0"  
Area: 70 sq. ft  
Counted as Living Area:  
Yes

Heated: Yes  
Finished: Yes  
Enclosed: Yes  
Contiguous:  
Yes  
Permitted: Yes  
Wet Space: No  
Addition: No  
Conversion: No

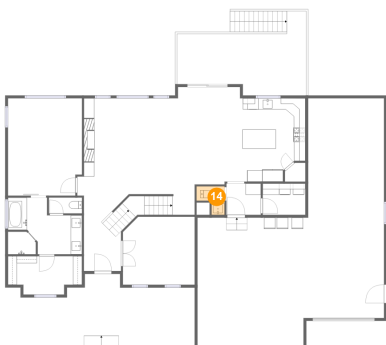
## 13 Floor 2 - Dining Area



Dimensions: 11'0" x 17'4"  
Area: 167 sq. ft  
Counted as Living Area:  
Yes

Heated: Yes  
Finished: Yes  
Enclosed: Yes  
Contiguous:  
Yes  
Permitted: Yes  
Wet Space: No  
Addition: No  
Conversion: No

## 14 Floor 2 - Wc

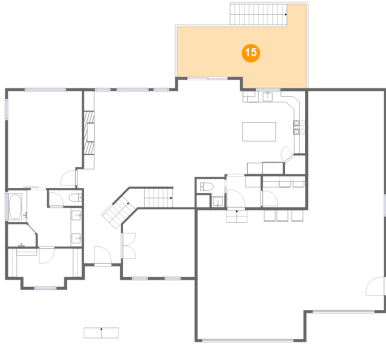


Dimensions: 4'4" x 5'1"  
Area: 19 sq. ft  
Counted as Living Area:  
Yes

Heated: Yes  
Finished: Yes  
Enclosed: Yes  
Contiguous:  
Yes  
Permitted: Yes  
Wet Space: Yes  
Addition: No  
Conversion: No

# 3148 Clearwater Street, Pocatello, Bannock County, Idaho, United States, 83201

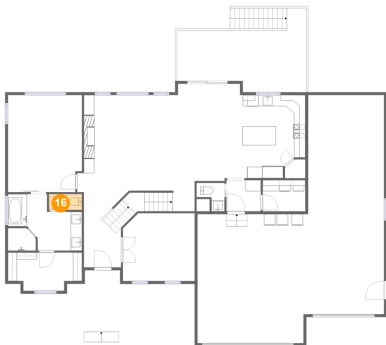
## 15 Floor 2 - Deck



Dimensions: 23'0" x 14'11"  
Area: 242 sq. ft  
Counted as Living Area: No

Heated: No  
Finished: Yes  
Enclosed: No  
Contiguous: Yes  
Permitted: Yes  
Wet Space: No  
Addition: No  
Conversion: No

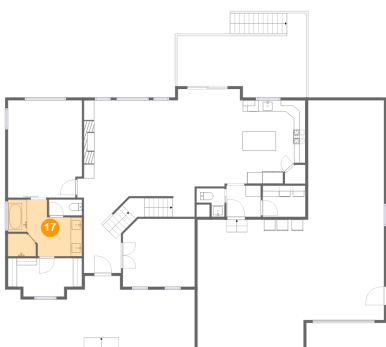
## 16 Floor 2 - Wc



Dimensions: 5'11" x 2'10"  
Area: 17 sq. ft  
Counted as Living Area: Yes

Heated: Yes  
Finished: Yes  
Enclosed: Yes  
Contiguous: Yes  
Permitted: Yes  
Wet Space: Yes  
Addition: No  
Conversion: No

## 17 Floor 2 - Primary Bath

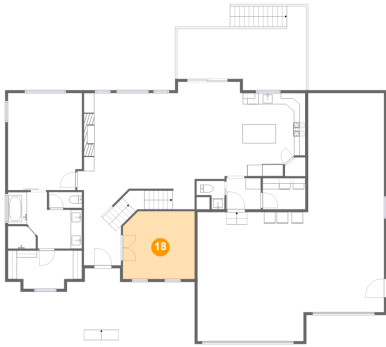


Dimensions: 13'2" x 10'1"  
Area: 111 sq. ft  
Counted as Living Area: Yes

Heated: Yes  
Finished: Yes  
Enclosed: Yes  
Contiguous: Yes  
Permitted: Yes  
Wet Space: Yes  
Addition: No  
Conversion: No

# 3148 Clearwater Street, Pocatello, Bannock County, Idaho, United States, 83201

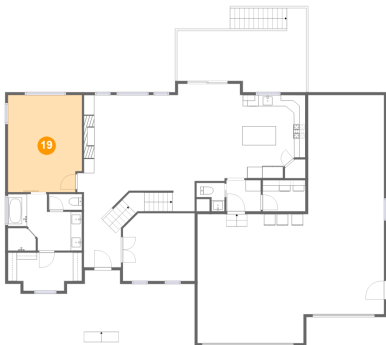
## 18 Floor 2 - Office



Dimensions: 12'9" x 12'1"  
Area: 151 sq. ft  
Counted as Living Area:  
Yes

Heated: Yes  
Finished: Yes  
Enclosed: Yes  
Contiguous:  
Yes  
Permitted: Yes  
Wet Space: No  
Addition: No  
Conversion: No

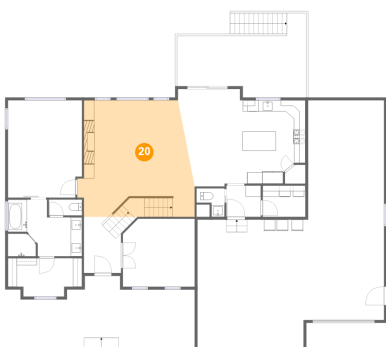
## 19 Floor 2 - Primary Bedroom



Dimensions: 13'2" x 17'3"  
Area: 224 sq. ft  
Counted as Living Area:  
Yes

Heated: Yes  
Finished: Yes  
Enclosed: Yes  
Contiguous:  
Yes  
Permitted: Yes  
Wet Space: No  
Addition: No  
Conversion: No

## 20 Floor 2 - Living Room

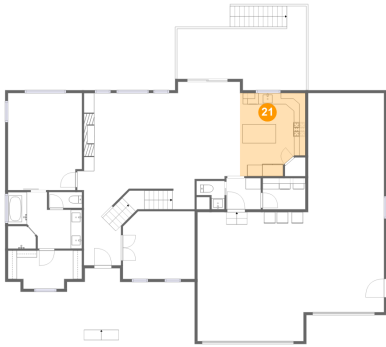


Dimensions: 20'11" x 20'4"  
Area: 390 sq. ft  
Counted as Living Area:  
Yes

Heated: Yes  
Finished: Yes  
Enclosed: Yes  
Contiguous:  
Yes  
Permitted: Yes  
Wet Space: No  
Addition: No  
Conversion: No

# 3148 Clearwater Street, Pocatello, Bannock County, Idaho, United States, 83201

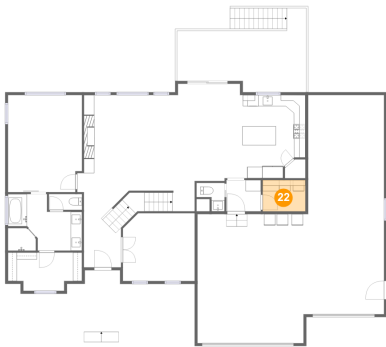
## 21 Floor 2 - Kitchen



Dimensions: 11'8" x 14'10"  
Area: 159 sq. ft  
Counted as Living Area:  
Yes

Heated: Yes  
Finished: Yes  
Enclosed: Yes  
Contiguous:  
Yes  
Permitted: Yes  
Wet Space: No  
Addition: No  
Conversion: No

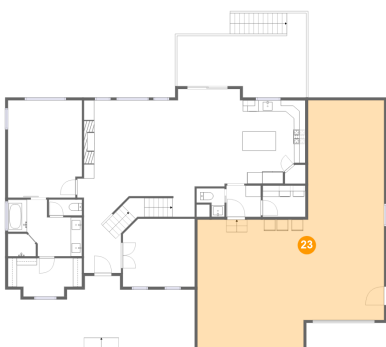
## 22 Floor 2 - Laundry



Dimensions: 7'7" x 5'7"  
Area: 42 sq. ft  
Counted as Living Area:  
Yes

Heated: Yes  
Finished: Yes  
Enclosed: Yes  
Contiguous:  
Yes  
Permitted: Yes  
Wet Space: No  
Addition: No  
Conversion: No

## 23 Floor 2 - Garage

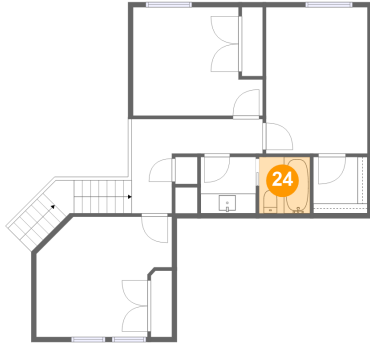


Dimensions: 33'3" x 38'11"  
Area: 976 sq. ft  
Counted as Living Area: No

Heated: No  
Finished: No  
Enclosed: Yes  
Contiguous: Yes  
Permitted: Yes  
Wet Space: No  
Addition: No  
Conversion: No

# 3148 Clearwater Street, Pocatello, Bannock County, Idaho, United States, 83201

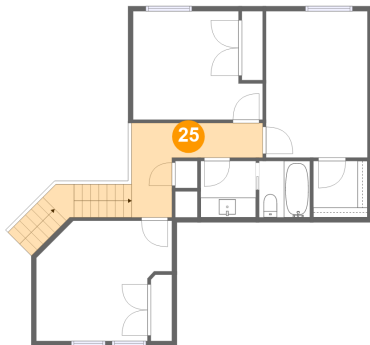
## 24 Floor 3 - Bath



Dimensions: 5'1" x 5'8"  
Area: 29 sq. ft  
Counted as Living Area:  
Yes

Heated: Yes  
Finished: Yes  
Enclosed: Yes  
Contiguous:  
Yes  
Permitted: Yes  
Wet Space: Yes  
Addition: No  
Conversion: No

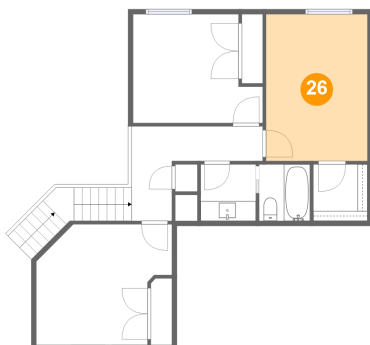
## 25 Floor 3 - Hall



Dimensions: 13'2" x 9'5"  
Area: 114 sq. ft  
Counted as Living Area:  
Yes

Heated: Yes  
Finished: Yes  
Enclosed: Yes  
Contiguous:  
Yes  
Permitted: Yes  
Wet Space: No  
Addition: No  
Conversion: No

## 26 Floor 3 - Bedroom

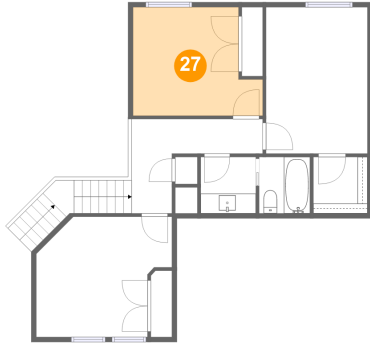


Dimensions: 10'2" x 14'8"  
Area: 150 sq. ft  
Counted as Living Area:  
Yes

Heated: Yes  
Finished: Yes  
Enclosed: Yes  
Contiguous:  
Yes  
Permitted: Yes  
Wet Space: No  
Addition: No  
Conversion: No

# 3148 Clearwater Street, Pocatello, Bannock County, Idaho, United States, 83201

## 27 Floor 3 - Bedroom



Dimensions: 13'0" x 10'11"  
Area: 124 sq. ft  
Counted as Living Area:  
Yes

Heated: Yes  
Finished: Yes  
Enclosed: Yes  
Contiguous:  
Yes  
Permitted: Yes  
Wet Space: No  
Addition: No  
Conversion: No

## 28 Floor 3 - Bath



Dimensions: 5'6" x 5'8"  
Area: 31 sq. ft  
Counted as Living Area:  
Yes

Heated: Yes  
Finished: Yes  
Enclosed: Yes  
Contiguous:  
Yes  
Permitted: Yes  
Wet Space: Yes  
Addition: No  
Conversion: No

## 29 Floor 3 - Bedroom

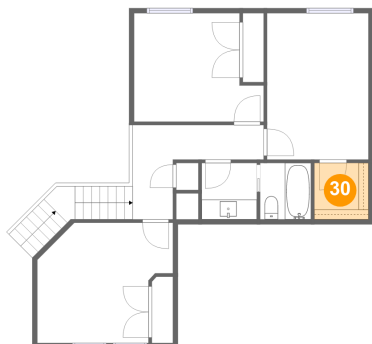


Dimensions: 13'8" x 12'1"  
Area: 141 sq. ft  
Counted as Living Area:  
Yes

Heated: Yes  
Finished: Yes  
Enclosed: Yes  
Contiguous:  
Yes  
Permitted: Yes  
Wet Space: No  
Addition: No  
Conversion: No

# 3148 Clearwater Street, Pocatello, Bannock County, Idaho, United States, 83201

## 30 Floor 3 - W.i.c.



Dimensions: 5'5" x 5'8"  
Area: 31 sq. ft  
Counted as Living Area:  
Yes

Heated: Yes  
Finished: Yes  
Enclosed: Yes  
Contiguous:  
Yes  
Permitted: Yes  
Wet Space: No  
Addition: No  
Conversion: No