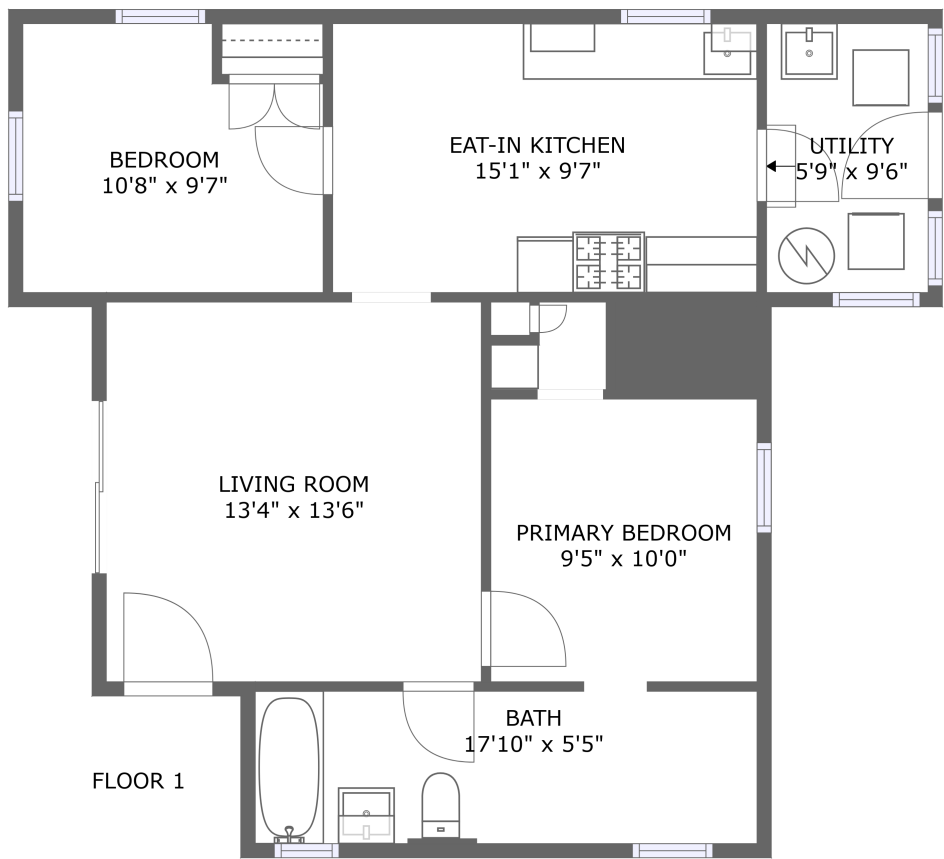


Home report

647 Vine Street, Paso Robles, San Luis Obispo County,
California, United States, 93446




Total Area: 728 sq. ft


Floor 1: 728 sq. ft

Excluded: Walls: 62 sq. ft

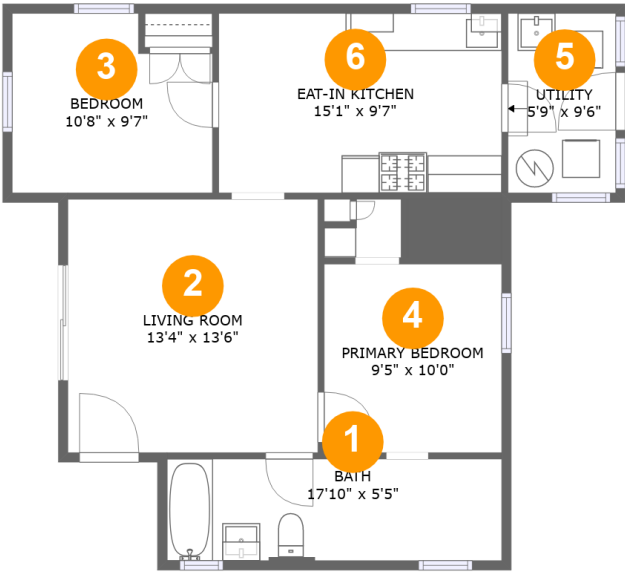
Property summary

 **1** Floors

 **2** Bedrooms

 **1** Bathrooms

647 Vine Street, Paso Robles, San Luis Obispo County,
California, United States, 93446



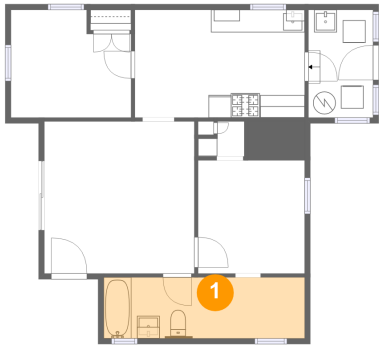
Room dimensions

Floor 1 Total:728sqft Excluded: 0sqft

| # | | Max Dimensions | sqft | Included |
|---|-----------------|----------------|------------|----------|
| 1 | Bath | 17'10" x 5'5" | 96 sq. ft | Yes |
| 2 | Living Room | 13'4" x 13'6" | 179 sq. ft | Yes |
| 3 | Bedroom | 10'8" x 9'7" | 93 sq. ft | Yes |
| 4 | Primary Bedroom | 9'5" x 10'0" | 95 sq. ft | Yes |
| 5 | Utility | 5'9" x 9'6" | 55 sq. ft | Yes |
| 6 | Eat-in Kitchen | 15'1" x 9'7" | 144 sq. ft | Yes |

647 Vine Street, Paso Robles, San Luis Obispo County,
California, United States, 93446

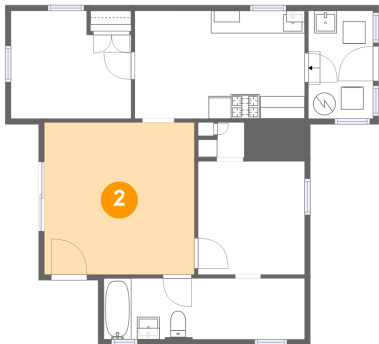
1 Floor 1 - Bath



Max Dimensions: 17'10" x 5'5"
Calculated Area: 96 sq. ft
Included: Yes

Heated: Yes
Finished: Yes
Enclosed: Yes
Contiguous: Yes
Permitted: Yes
Wet space: Yes
Addition: No
Conversion: No

2 Floor 1 - Living Room

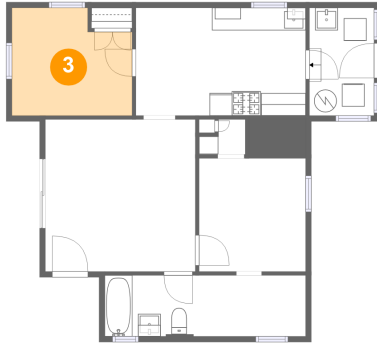


Max Dimensions: 13'4" x 13'6"
Calculated Area: 179 sq. ft
Included: Yes

Heated: Yes
Finished: Yes
Enclosed: Yes
Contiguous: Yes
Permitted: Yes
Wet space: No
Addition: No
Conversion: No

647 Vine Street, Paso Robles, San Luis Obispo County,
California, United States, 93446

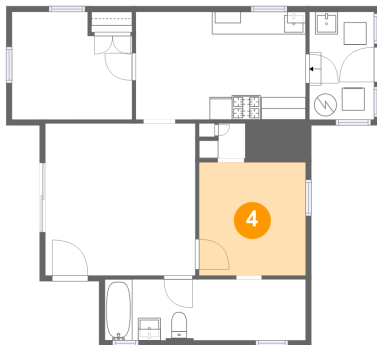
3 Floor 1 - Bedroom



Max Dimensions: 10'8" x 9'7"
Calculated Area: 93 sq. ft
Included: Yes

Heated: Yes
Finished: Yes
Enclosed: Yes
Contiguous: Yes
Permitted: Yes
Wet space: No
Addition: No
Conversion: No

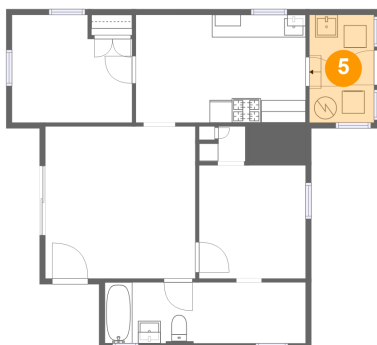
4 Floor 1 - Primary Bedroom



Max Dimensions: 9'5" x 10'0"
Calculated Area: 95 sq. ft
Included: Yes

Heated: Yes
Finished: Yes
Enclosed: Yes
Contiguous: Yes
Permitted: Yes
Wet space: No
Addition: No
Conversion: No

5 Floor 1 - Utility

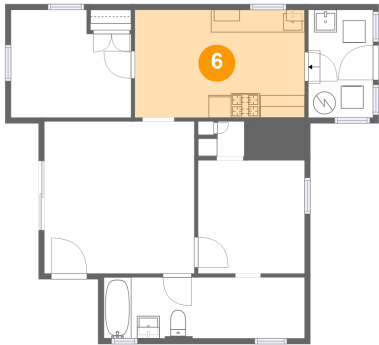


Max Dimensions: 5'9" x 9'6"
Calculated Area: 55 sq. ft
Included: Yes

Heated: Yes
Finished: Yes
Enclosed: Yes
Contiguous: Yes
Permitted: Yes
Wet space: No
Addition: No
Conversion: No

647 Vine Street, Paso Robles, San Luis Obispo County,
California, United States, 93446

6 Floor 1 - Eat-in Kitchen



Max Dimensions: 15'1" x 9'7"
Calculated Area: 144 sq. ft
Included: Yes

Heated: Yes
Finished: Yes
Enclosed: Yes
Contiguous: Yes
Permitted: Yes
Wet space: No
Addition: No
Conversion: No