

Home report

205 Deerwood Drive, Huddleston, Bedford County, Virginia, United States, 24104



Total Area: 2408 sq. ft

Floor 1: 1145 sq. ft, Floor 2: 1263 sq. ft

Excluded: Utility 112 sq. ft, Garage 314 sq. ft, Deck 395 sq. ft, Porch 63 sq. ft, Walls: 190 sq. ft

Property summary

 **2** Floors

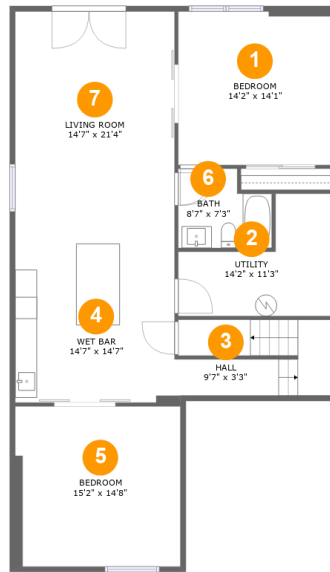
 **5** Bedrooms

 **3** Bathrooms

 **1** Garages

Home report

205 Deerwood Drive, Huddleston, Bedford County, Virginia,
United States, 24104



Room dimensions

Floor 1

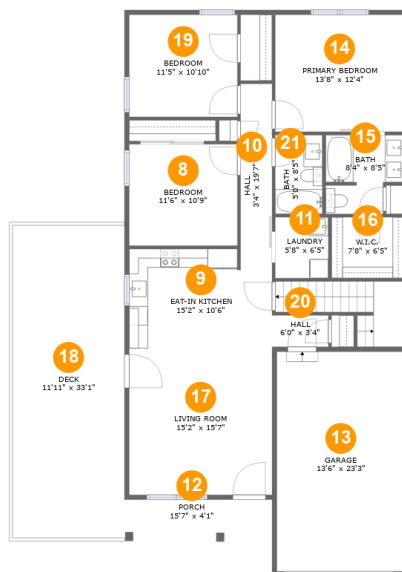
Total:1145sqft

Excluded: 112sqft

#		Max Dimensions	sqft	Included
1	Bedroom	14'2" x 14'1"	199 sq. ft	Yes
2	Utility	14'2" x 11'3"	112 sq. ft	No
3	Hall	9'7" x 3'3"	96 sq. ft	Yes
4	Wet Bar	14'7" x 14'7"	213 sq. ft	Yes
5	Bedroom	15'2" x 14'8"	216 sq. ft	Yes
6	Bath	8'7" x 7'3"	55 sq. ft	Yes
7	Living Room	14'7" x 21'4"	311 sq. ft	Yes

Home report

205 Deerwood Drive, Huddleston, Bedford County, Virginia, United States, 24104



Room dimensions

Floor 2

Total: 1263sqft

Excluded: 772sqft

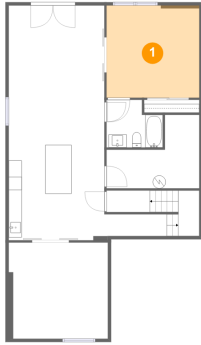
#		Max Dimensions	sqft	Included
8	Bedroom	11'6" x 10'9"	123 sq. ft	Yes
9	Eat-in Kitchen	15'2" x 10'6"	152 sq. ft	Yes
10	Hall	3'4" x 19'7"	66 sq. ft	Yes
11	Laundry	5'8" x 6'5"	36 sq. ft	Yes
12	Porch	15'7" x 4'1"	63 sq. ft	No
13	Garage	13'6" x 23'3"	314 sq. ft	No
14	Primary Bedroom	13'8" x 12'4"	169 sq. ft	Yes
15	Bath	8'4" x 8'5"	61 sq. ft	Yes
16	W.I.C.	7'8" x 6'5"	50 sq. ft	Yes
17	Living Room	15'2" x 15'7"	236 sq. ft	Yes
18	Deck	11'11" x 33'1"	395 sq. ft	No

Home report

**205 Deerwood Drive, Huddleston, Bedford County, Virginia,
United States, 24104**

#		Max Dimensions	sqft	Included
19	Bedroom	11'5" x 10'10"	124 sq. ft	Yes
20	Hall	6'0" x 3'4"	20 sq. ft	Yes
21	Bath	5'0" x 8'5"	42 sq. ft	Yes

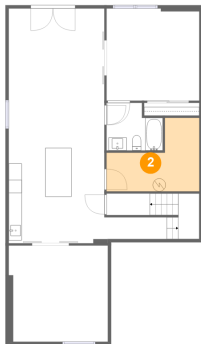
1 Floor 1 - Bedroom



Max Dimensions: 14'2" x
14'1"
Calculated Area: 199 sq. ft
Included: Yes

Heated: Yes
Finished: Yes
Enclosed: Yes
Contiguous:
Yes
Permitted: Yes
Wet space: No
Addition: No
Conversion: No

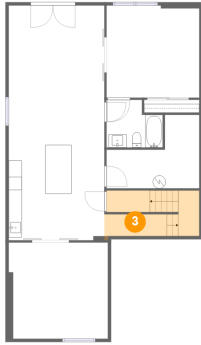
2 Floor 1 - Utility



Max Dimensions: 14'2" x
11'3"
Calculated Area: 112 sq. ft
Included: No

Heated: Yes
Finished: No
Enclosed: Yes
Contiguous:
Yes
Permitted: Yes
Wet space: No
Addition: No
Conversion: No

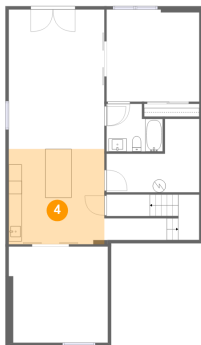
3 Floor 1 - Hall



Max Dimensions: 9'7" x 3'3"
Calculated Area: 96 sq. ft
Included: Yes

Heated: Yes
Finished: Yes
Enclosed: Yes
Contiguous: Yes
Permitted: Yes
Wet space: No
Addition: No
Conversion: No

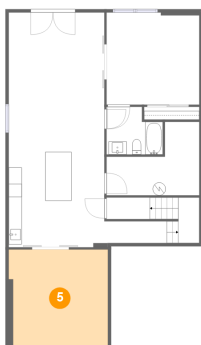
4 Floor 1 - Wet Bar



Max Dimensions: 14'7" x 14'7"
Calculated Area: 213 sq. ft
Included: Yes

Heated: Yes
Finished: Yes
Enclosed: Yes
Contiguous: Yes
Permitted: Yes
Wet space: No
Addition: No
Conversion: No

5 Floor 1 - Bedroom



Max Dimensions: 15'2" x 14'8"
Calculated Area: 216 sq. ft
Included: Yes

Heated: Yes
Finished: Yes
Enclosed: Yes
Contiguous: Yes
Permitted: Yes
Wet space: No
Addition: No
Conversion: No

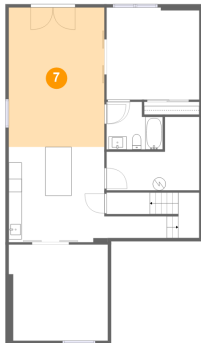
6 Floor 1 - Bath



Max Dimensions: 8'7" x 7'3"
Calculated Area: 55 sq. ft
Included: Yes

Heated: Yes
Finished: Yes
Enclosed: Yes
Contiguous: Yes
Permitted: Yes
Wet space: Yes
Addition: No
Conversion: No

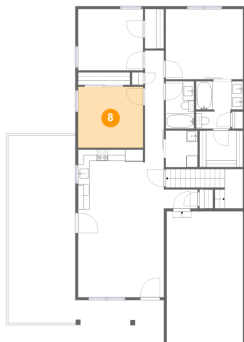
7 Floor 1 - Living Room



Max Dimensions: 14'7" x 21'4"
Calculated Area: 311 sq. ft
Included: Yes

Heated: Yes
Finished: Yes
Enclosed: Yes
Contiguous: Yes
Permitted: Yes
Wet space: No
Addition: No
Conversion: No

8 Floor 2 - Bedroom



Max Dimensions: 11'6" x 10'9"
Calculated Area: 123 sq. ft
Included: Yes

Heated: Yes
Finished: Yes
Enclosed: Yes
Contiguous: Yes
Permitted: Yes
Wet space: No
Addition: No
Conversion: No

205 Deerwood Drive, Huddleston, Bedford County, Virginia,
United States, 24104

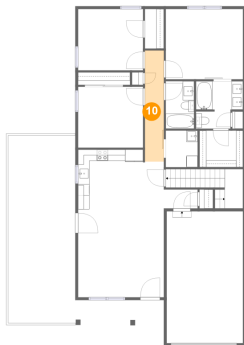
9 Floor 2 - Eat-in Kitchen



Max Dimensions: 15'2" x 10'6"
Calculated Area: 152 sq. ft
Included: Yes

Heated: Yes
Finished: Yes
Enclosed: Yes
Contiguous: Yes
Permitted: Yes
Wet space: No
Addition: No
Conversion: No

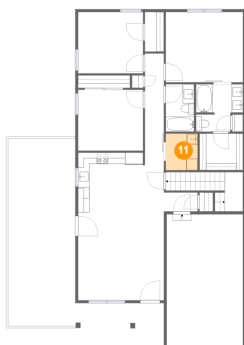
10 Floor 2 - Hall



Max Dimensions: 3'4" x 19'7"
Calculated Area: 66 sq. ft
Included: Yes

Heated: Yes
Finished: Yes
Enclosed: Yes
Contiguous: Yes
Permitted: Yes
Wet space: No
Addition: No
Conversion: No

11 Floor 2 - Laundry



Max Dimensions: 5'8" x 6'5"
Calculated Area: 36 sq. ft
Included: Yes

Heated: Yes
Finished: Yes
Enclosed: Yes
Contiguous: Yes
Permitted: Yes
Wet space: No
Addition: No
Conversion: No

12 Floor 2 - Porch



Max Dimensions: 15'7" x 4'1"
Calculated Area: 63 sq. ft
Included: No

Heated: No
Finished: Yes
Enclosed: No
Contiguous: Yes
Permitted: Yes
Wet space: No
Addition: No
Conversion: No

13 Floor 2 - Garage



Max Dimensions: 13'6" x 23'3"
Calculated Area: 314 sq. ft
Included: No

Heated: No
Finished: No
Enclosed: Yes
Contiguous: Yes
Permitted: Yes
Wet space: No
Addition: No
Conversion: No

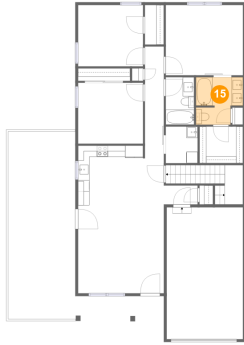
14 Floor 2 - Primary Bedroom



Max Dimensions: 13'8" x 12'4"
Calculated Area: 169 sq. ft
Included: Yes

Heated: Yes
Finished: Yes
Enclosed: Yes
Contiguous: Yes
Permitted: Yes
Wet space: No
Addition: No
Conversion: No

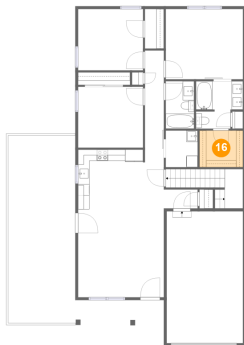
15 Floor 2 - Bath



Max Dimensions: 8'4" x 8'5"
Calculated Area: 61 sq. ft
Included: Yes

Heated: Yes
Finished: Yes
Enclosed: Yes
Contiguous: Yes
Permitted: Yes
Wet space: Yes
Addition: No
Conversion: No

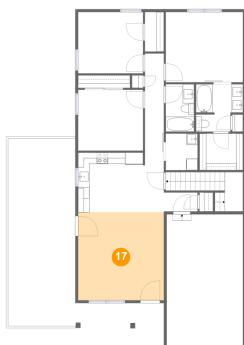
16 Floor 2 - W.I.C.



Max Dimensions: 7'8" x 6'5"
Calculated Area: 50 sq. ft
Included: Yes

Heated: Yes
Finished: Yes
Enclosed: Yes
Contiguous: Yes
Permitted: Yes
Wet space: No
Addition: No
Conversion: No

17 Floor 2 - Living Room



Max Dimensions: 15'2" x
15'7"
Calculated Area: 236 sq. ft
Included: Yes

Heated: Yes
Finished: Yes
Enclosed: Yes
Contiguous:
Yes
Permitted: Yes
Wet space: No
Addition: No
Conversion: No

18 Floor 2 - Deck



Max Dimensions: 11'11" x 33'1"
Calculated Area: 395 sq. ft
Included: No

Heated: No
Finished: Yes
Enclosed: No
Contiguous: Yes
Permitted: Yes
Wet space: No
Addition: No
Conversion: No

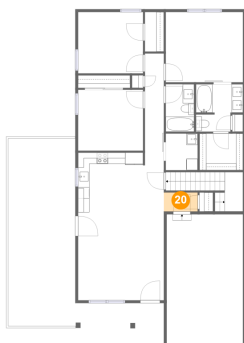
19 Floor 2 - Bedroom



Max Dimensions: 11'5" x 10'10"
Calculated Area: 124 sq. ft
Included: Yes

Heated: Yes
Finished: Yes
Enclosed: Yes
Contiguous: Yes
Permitted: Yes
Wet space: No
Addition: No
Conversion: No

20 Floor 2 - Hall



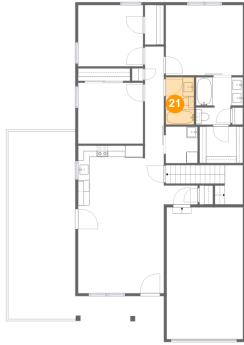
Max Dimensions: 6'0" x 3'4"
Calculated Area: 20 sq. ft
Included: Yes

Heated: Yes
Finished: Yes
Enclosed: Yes
Contiguous: Yes
Permitted: Yes
Wet space: No
Addition: No
Conversion: No

Home report

205 Deerwood Drive, Huddleston, Bedford County, Virginia,
United States, 24104

21 Floor 2 - Bath



Max Dimensions: 5'0" x 8'5"
Calculated Area: 42 sq. ft
Included: Yes

Heated: Yes
Finished: Yes
Enclosed: Yes
Contiguous: Yes
Permitted: Yes
Wet space: Yes
Addition: No
Conversion: No