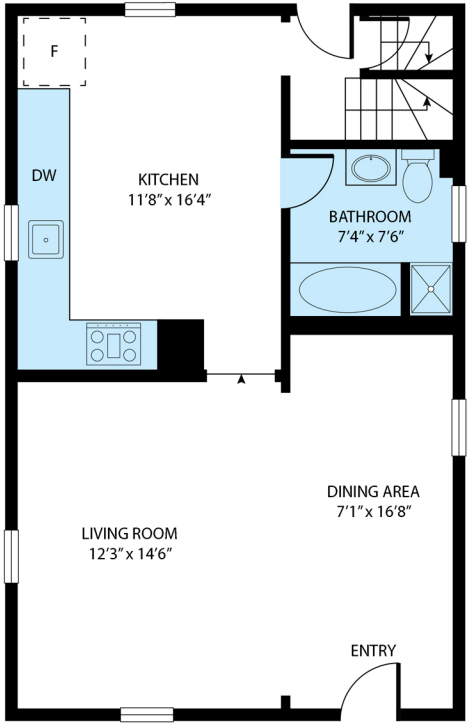
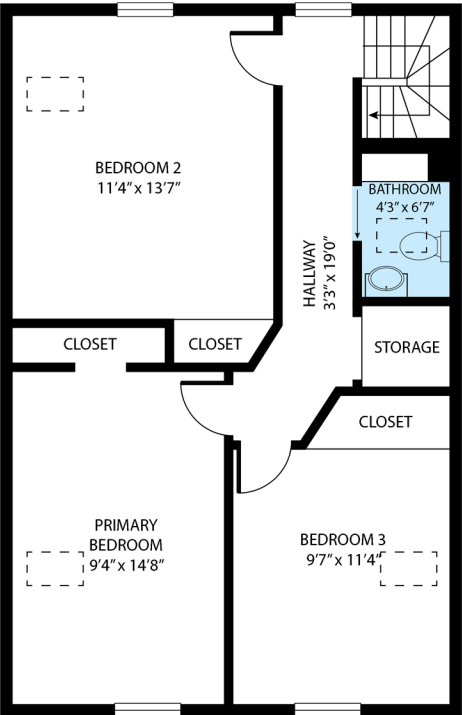


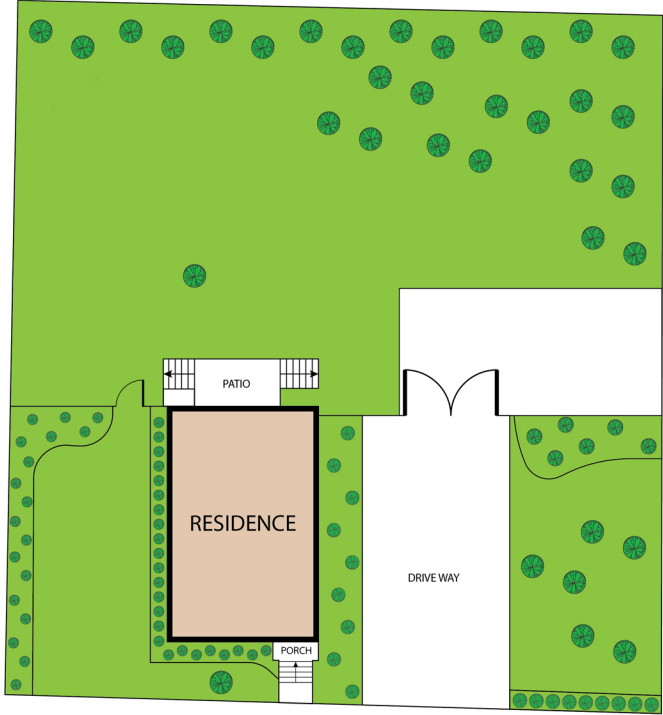
BASEMENT



FIRST FLOOR



SECOND FLOOR



25 Irving Street, Salem 01970

TOTAL APPROX. FLOOR AREA 1,697 SQ.FT

Whilst every attempt has been made to ensure the accuracy of the floor plan contained here, measurements of doors, windows, rooms and any other items are approximate and no responsibility is taken for any error, omission, or misstatement. This plan is for illustrative purposes only and should be used as such by any prospective purchaser.