

Home report

4711 Florist Road Northwest, Preston Park, Roanoke, Roanoke city, Virginia, United States, 24012



Total Area: 2145 sq. ft
Floor 1: 944 sq. ft, Floor 2: 1201 sq. ft
Excluded: LAUNDRY/UTILITY 257 sq. ft, Outdoor Patio 333 sq. ft, Fireplace 14 sq. ft, Outdoor Porch 22 sq. ft, Carport 356 sq. ft

Property summary

 **2** Floors

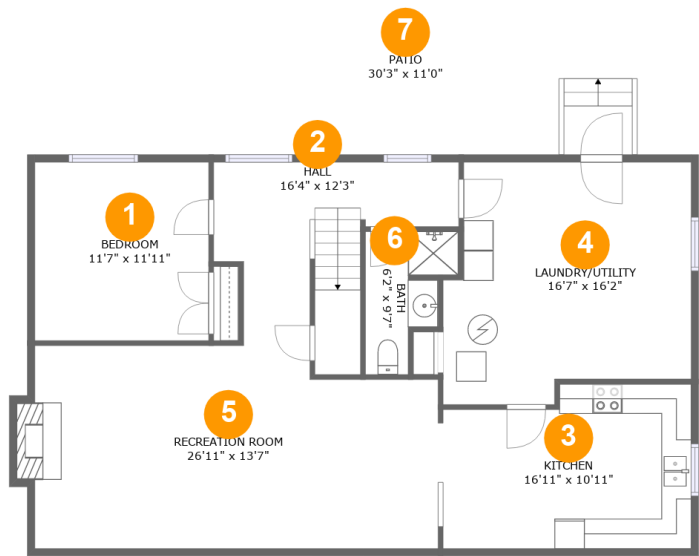
 **4** Bedrooms

 **2** Bathrooms

 **1** Half baths

Home report

4711 Florist Road Northwest, Preston Park, Roanoke, Roanoke city, Virginia, United States, 24012



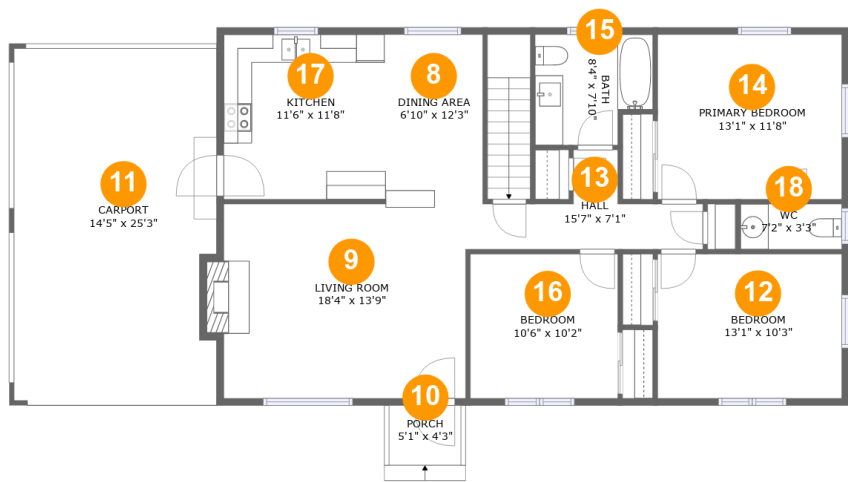
Room dimensions

Floor 1 Total:944sqft Excluded: 597sqft

#		Max Dimensions	sqft	Included
1	Bedroom	11'7" x 11'11"	138 sq. ft	Yes
2	Hall	16'4" x 12'3"	141 sq. ft	Yes
3	Kitchen	16'11" x 10'11"	171 sq. ft	Yes
4	LAUNDRY/UTILITY	16'7" x 16'2"	242 sq. ft	No
5	Recreation Room	26'11" x 13'7"	351 sq. ft	Yes
6	Bath	6'2" x 9'7"	43 sq. ft	Yes
7	Patio	30'3" x 11'0"	333 sq. ft	No

Home report

4711 Florist Road Northwest, Preston Park, Roanoke, Roanoke city, Virginia, United States, 24012



Room dimensions

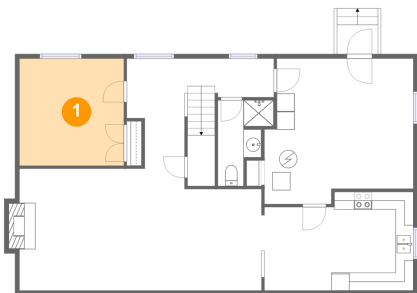
Floor 2

Total:1201sqft Excluded: 385sqft

#		Max Dimensions	sqft	Included
8	Dining Area	6'10" x 12'3"	84 sq. ft	Yes
9	Living Room	18'4" x 13'9"	245 sq. ft	Yes
10	Porch	5'1" x 4'3"	22 sq. ft	No
11	Carport	14'5" x 25'3"	356 sq. ft	No
12	Bedroom	13'1" x 10'3"	134 sq. ft	Yes
13	Hall	15'7" x 7'1"	62 sq. ft	Yes
14	Primary Bedroom	13'1" x 11'8"	152 sq. ft	Yes
15	Bath	8'4" x 7'10"	59 sq. ft	Yes
16	Bedroom	10'6" x 10'2"	107 sq. ft	Yes
17	Kitchen	11'6" x 11'8"	134 sq. ft	Yes
18	WC	7'2" x 3'3"	23 sq. ft	Yes

4711 Florist Road Northwest, Preston Park, Roanoke, Roanoke city, Virginia, United States, 24012

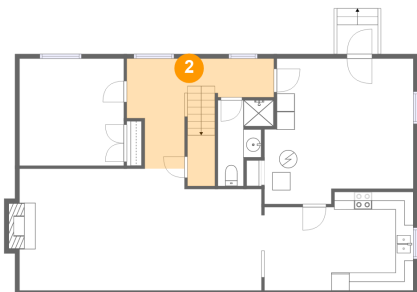
1 Floor 1 - Bedroom



Max Dimensions: 11'7" x 11'11"
Calculated Area: 138 sq. ft
Included: Yes

Heated: Yes
Finished: Yes
Enclosed: Yes
Contiguous: Yes
Permitted: Yes
Wet space: No
Addition: No
Conversion: No

2 Floor 1 - Hall

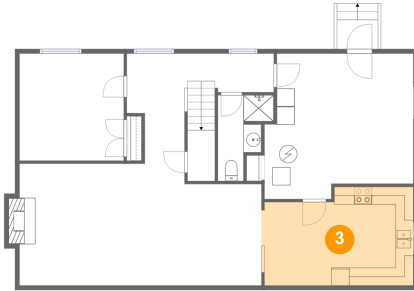


Max Dimensions: 16'4" x 12'3"
Calculated Area: 141 sq. ft
Included: Yes

Heated: Yes
Finished: Yes
Enclosed: Yes
Contiguous: Yes
Permitted: Yes
Wet space: No
Addition: No
Conversion: No

4711 Florist Road Northwest, Preston Park, Roanoke, Roanoke city, Virginia, United States, 24012

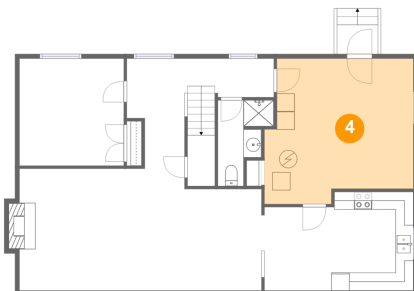
3 Floor 1 - Kitchen



Max Dimensions: 16'11" x 10'11"
Calculated Area: 171 sq. ft
Included: Yes

Heated: Yes
Finished: Yes
Enclosed: Yes
Contiguous: Yes
Permitted: Yes
Wet space: No
Addition: No
Conversion: No

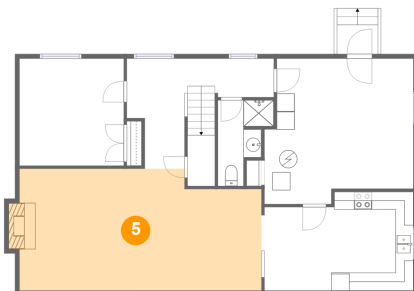
4 Floor 1 - LAUNDRY/UTILITY



Max Dimensions: 16'7" x 16'2"
Calculated Area: 242 sq. ft
Included: No

Heated: Yes
Finished: No
Enclosed: Yes
Contiguous: Yes
Permitted: Yes
Wet space: No
Addition: No
Conversion: No

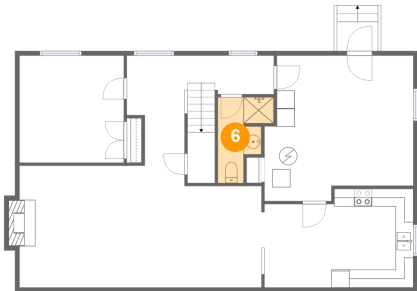
5 Floor 1 - Recreation Room



Max Dimensions: 26'11" x 13'7"
Calculated Area: 351 sq. ft
Included: Yes

Heated: Yes
Finished: Yes
Enclosed: Yes
Contiguous: Yes
Permitted: Yes
Wet space: No
Addition: No
Conversion: No

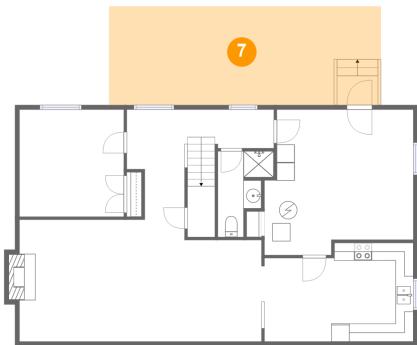
6 Floor 1 - Bath



Max Dimensions: 6'2" x 9'7"
Calculated Area: 43 sq. ft
Included: Yes

Heated: Yes
Finished: Yes
Enclosed: Yes
Contiguous: Yes
Permitted: Yes
Wet space: Yes
Addition: No
Conversion: No

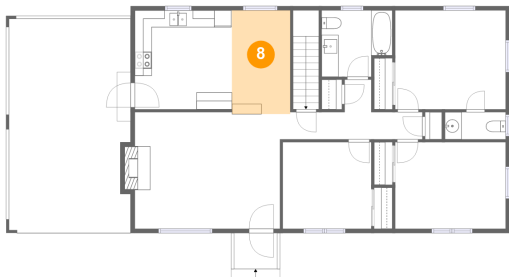
7 Floor 1 - Patio



Max Dimensions: 30'3" x 11'0"
Calculated Area: 333 sq. ft
Included: No

Heated: No
Finished: Yes
Enclosed: No
Contiguous: Yes
Permitted: Yes
Wet space: No
Addition: No
Conversion: No

8 Floor 2 - Dining Area



Max Dimensions: 6'10" x 12'3"
Calculated Area: 84 sq. ft
Included: Yes

Heated: Yes
Finished: Yes
Enclosed: Yes
Contiguous: Yes
Permitted: Yes
Wet space: No
Addition: No
Conversion: No

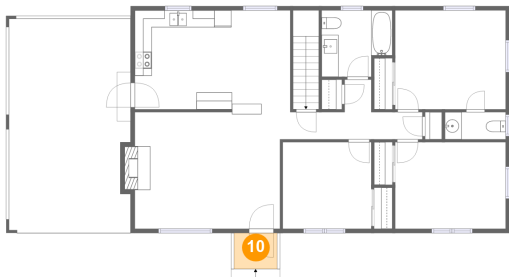
9 Floor 2 - Living Room



Max Dimensions: 18'4" x 13'9"
Calculated Area: 245 sq. ft
Included: Yes

Heated: Yes
Finished: Yes
Enclosed: Yes
Contiguous: Yes
Permitted: Yes
Wet space: No
Addition: No
Conversion: No

10 Floor 2 - Porch



Max Dimensions: 5'1" x 4'3"
Calculated Area: 22 sq. ft
Included: No

Heated: No
Finished: Yes
Enclosed: No
Contiguous: Yes
Permitted: Yes
Wet space: No
Addition: No
Conversion: No

11 Floor 2 - Carport



Max Dimensions: 14'5" x 25'3"
Calculated Area: 356 sq. ft
Included: No

Heated: No
Finished: Yes
Enclosed: No
Contiguous: Yes
Permitted: Yes
Wet space: No
Addition: No
Conversion: No

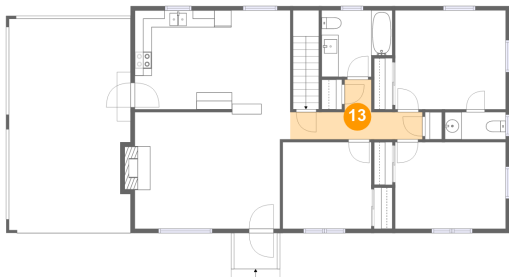
12 Floor 2 - Bedroom



Max Dimensions: 13'1" x 10'3"
Calculated Area: 134 sq. ft
Included: Yes

Heated: Yes
Finished: Yes
Enclosed: Yes
Contiguous: Yes
Permitted: Yes
Wet space: No
Addition: No
Conversion: No

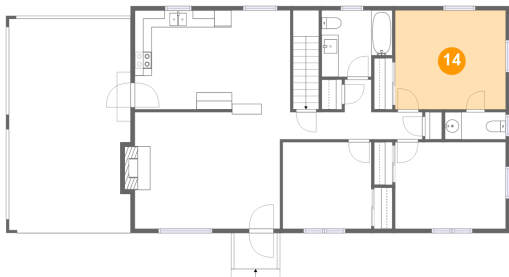
13 Floor 2 - Hall



Max Dimensions: 15'7" x 7'1"
Calculated Area: 62 sq. ft
Included: Yes

Heated: Yes
Finished: Yes
Enclosed: Yes
Contiguous: Yes
Permitted: Yes
Wet space: No
Addition: No
Conversion: No

14 Floor 2 - Primary Bedroom



Max Dimensions: 13'1" x 11'8"
Calculated Area: 152 sq. ft
Included: Yes

Heated: Yes
Finished: Yes
Enclosed: Yes
Contiguous: Yes
Permitted: Yes
Wet space: No
Addition: No
Conversion: No

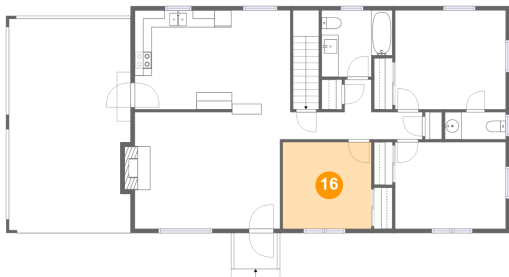
15 Floor 2 - Bath



Max Dimensions: 8'4" x 7'10"
Calculated Area: 59 sq. ft
Included: Yes

Heated: Yes
Finished: Yes
Enclosed: Yes
Contiguous: Yes
Permitted: Yes
Wet space: Yes
Addition: No
Conversion: No

16 Floor 2 - Bedroom



Max Dimensions: 10'6" x 10'2"
Calculated Area: 107 sq. ft
Included: Yes

Heated: Yes
Finished: Yes
Enclosed: Yes
Contiguous: Yes
Permitted: Yes
Wet space: No
Addition: No
Conversion: No

17 Floor 2 - Kitchen



Max Dimensions: 11'6" x 11'8"
Calculated Area: 134 sq. ft
Included: Yes

Heated: Yes
Finished: Yes
Enclosed: Yes
Contiguous: Yes
Permitted: Yes
Wet space: No
Addition: No
Conversion: No

4711 Florist Road Northwest, Preston Park, Roanoke, Roanoke city, Virginia, United States, 24012

18 Floor 2 - WC



Max Dimensions: 7'2" x 3'3"
Calculated Area: 23 sq. ft
Included: Yes

Heated: Yes
Finished: Yes
Enclosed: Yes
Contiguous: Yes
Permitted: Yes
Wet space: Yes
Addition: No
Conversion: No