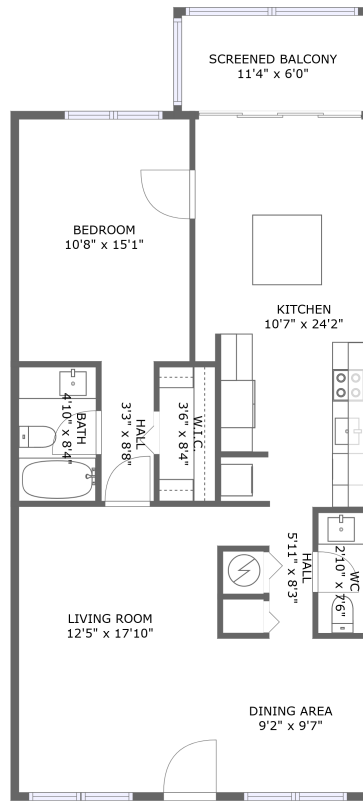



625 30th Avenue West, South Bradenton, Bradenton, Manatee County, Florida, United States, 34205, 408




FLOOR 1

Property summary

 **0** Garages


 **1** Bedrooms

 **1** Bathrooms

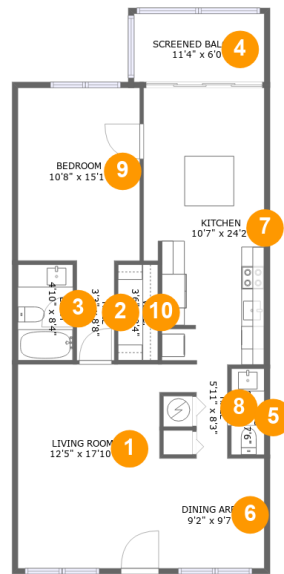
 **1** Half baths

 **1** Floors

 **906** Gross living area sqft

 **974** Total sqft

**625 30th Avenue West, South Bradenton, Bradenton,
Manatee County, Florida, United States, 34205, 408**



Room dimensions

Floor 1

Total sqft: 974 Living area: 906

#		Dimensions	sqft	Counted as living area
1	Living Room	12'5" x 17'10"	221 sq. ft	Yes
2	Hall	3'3" x 8'8"	29 sq. ft	Yes
3	Bath	4'10" x 8'4"	40 sq. ft	Yes
4	Outdoor	11'4" x 6'0"	68 sq. ft	No
5	Bath	2'10" x 7'6"	22 sq. ft	Yes
6	Dining Room	9'2" x 9'7"	88 sq. ft	Yes
7	Kitchen	10'7" x 24'2"	238 sq. ft	Yes
8	Hall	5'11" x 8'3"	30 sq. ft	Yes
9	Bedroom	10'8" x 15'1"	161 sq. ft	Yes
10	Cl	3'6" x 8'4"	29 sq. ft	Yes

**625 30th Avenue West, South Bradenton, Bradenton,
Manatee County, Florida, United States, 34205, 408**

1 Floor 1 - Living Room



Dimensions: 12'5" x 17'10"
Area: 221 sq. ft
Counted as living area: Yes

Heated: Yes
Finished: Yes
Enclosed: Yes
Contiguous: Yes
Permitted: Yes
Wet space: No
Addition: No
Conversion: No

2 Floor 1 - Hall



Dimensions: 3'3" x 8'8"
Area: 29 sq. ft
Counted as living area: Yes

Heated: Yes
Finished: Yes
Enclosed: Yes
Contiguous: Yes
Permitted: Yes
Wet space: No
Addition: No
Conversion: No

**625 30th Avenue West, South Bradenton, Bradenton,
Manatee County, Florida, United States, 34205, 408**

3 Floor 1 - Bath



Dimensions: 4'10" x 8'4"
Area: 40 sq. ft
Counted as living area: Yes

Heated: Yes
Finished: Yes
Enclosed: Yes
Contiguous: Yes
Permitted: Yes
Wet space: Yes
Addition: No
Conversion: No

4 Floor 1 - Outdoor



Dimensions: 11'4" x 6'0"
Area: 68 sq. ft
Counted as living area: No

Heated: No
Finished: Yes
Enclosed: No
Contiguous: Yes
Permitted: Yes
Wet space: No
Addition: No
Conversion: No

5 Floor 1 - Bath



Dimensions: 2'10" x 7'6"
Area: 22 sq. ft
Counted as living area: Yes

Heated: Yes
Finished: Yes
Enclosed: Yes
Contiguous: Yes
Permitted: Yes
Wet space: Yes
Addition: No
Conversion: No

625 30th Avenue West, South Bradenton, Bradenton,
Manatee County, Florida, United States, 34205, 408

6 Floor 1 - Dining Room



Dimensions: 9'2" x 9'7"
Area: 88 sq. ft
Counted as living area: Yes

Heated: Yes
Finished: Yes
Enclosed: Yes
Contiguous: Yes
Permitted: Yes
Wet space: No
Addition: No
Conversion: No

7 Floor 1 - Kitchen



Dimensions: 10'7" x 24'2"
Area: 238 sq. ft
Counted as living area: Yes

Heated: Yes
Finished: Yes
Enclosed: Yes
Contiguous: Yes
Permitted: Yes
Wet space: No
Addition: No
Conversion: No

8 Floor 1 - Hall



Dimensions: 5'11" x 8'3"
Area: 30 sq. ft
Counted as living area: Yes

Heated: Yes
Finished: Yes
Enclosed: Yes
Contiguous: Yes
Permitted: Yes
Wet space: No
Addition: No
Conversion: No

**625 30th Avenue West, South Bradenton, Bradenton,
Manatee County, Florida, United States, 34205, 408**

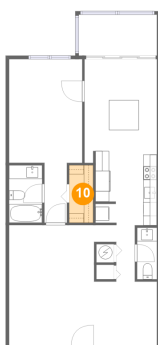
9 Floor 1 - Bedroom



Dimensions: 10'8" x 15'1"
Area: 161 sq. ft
Counted as living area: Yes

Heated: Yes
Finished: Yes
Enclosed: Yes
Contiguous: Yes
Permitted: Yes
Wet space: No
Addition: No
Conversion: No

10 Floor 1 - Cl



Dimensions: 3'6" x 8'4"
Area: 29 sq. ft
Counted as living area: Yes

Heated: Yes
Finished: Yes
Enclosed: Yes
Contiguous: Yes
Permitted: Yes
Wet space: No
Addition: No
Conversion: No