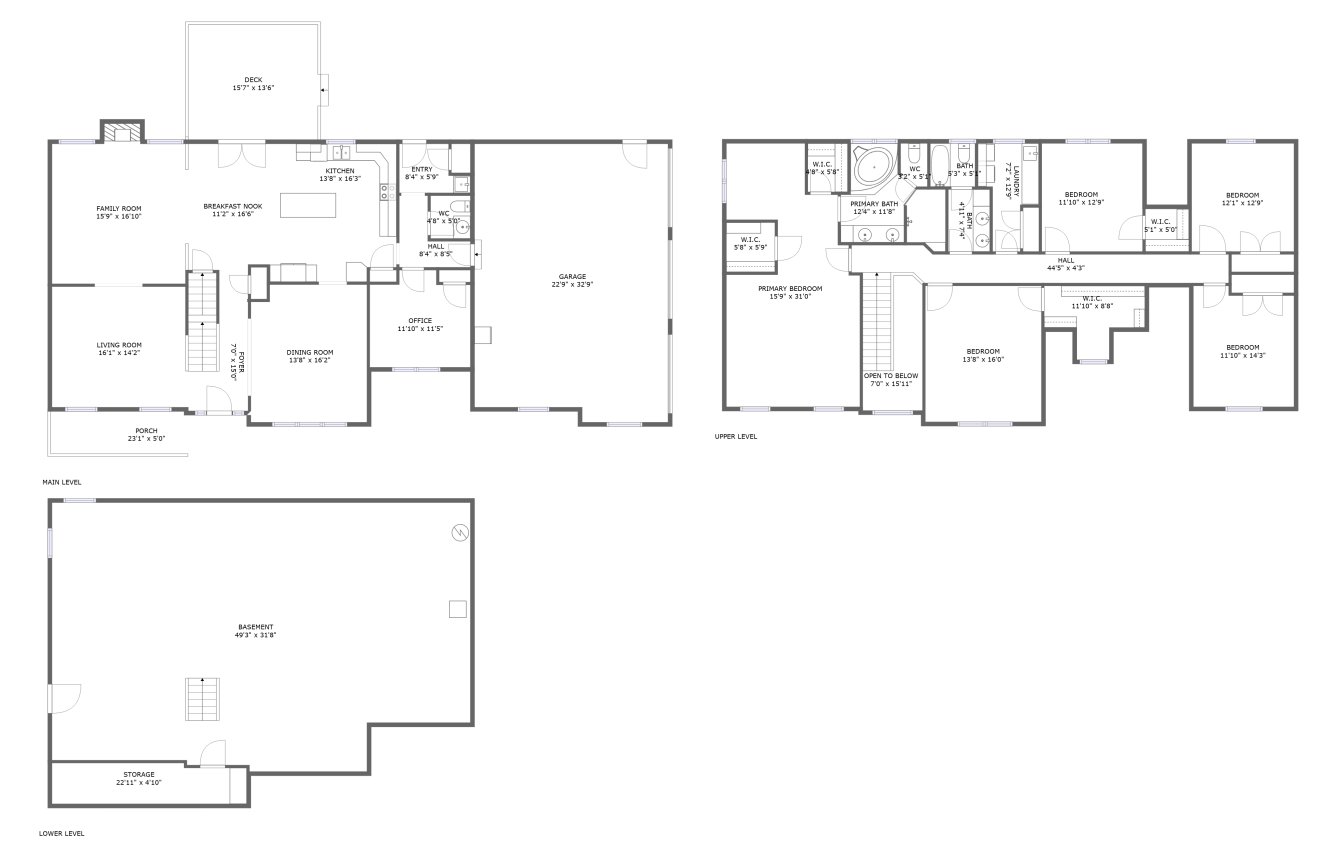



Home report

304 Iron Valley Drive, Cornwall, Lebanon County, Pennsylvania,  
United States, 17042




Property summary




1

Garages




5

Bedrooms



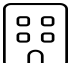
2

Bathrooms




1

Half baths




3

Floors



3,488

Gross living  
area sqft

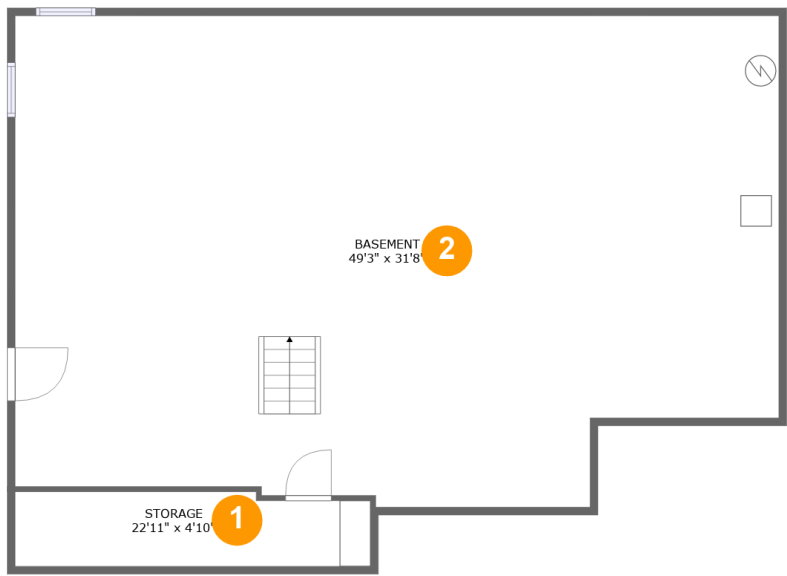


6,342

Total sqft

Home report

304 Iron Valley Drive, Cornwall, Lebanon County, Pennsylvania,  
United States, 17042



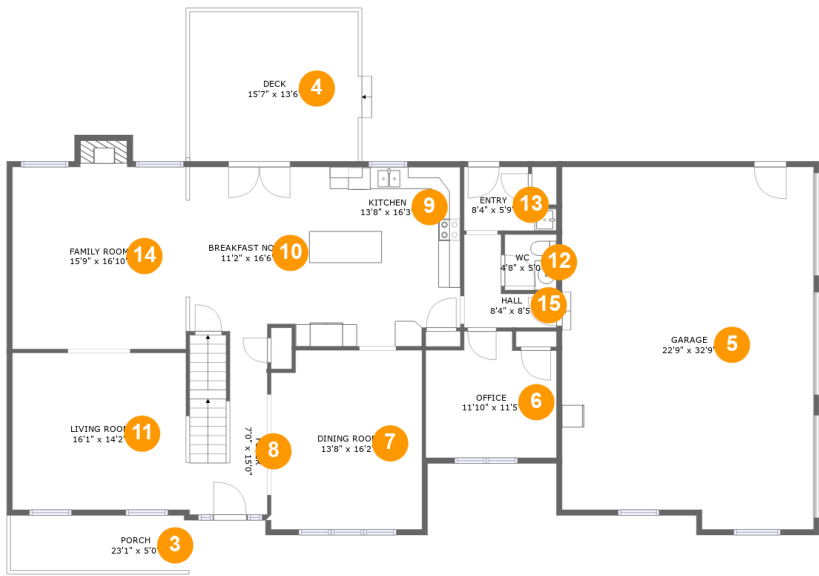
Room dimensions

Floor 1 Total sqft: 1662    Living area: 0

#		Dimensions	sqft	Counted as living area
1	Storage	22'11" x 4'10"	106 sq. ft	No
2	Basement	49'3" x 31'8"	1462 sq. ft	No

Home report

304 Iron Valley Drive, Cornwall, Lebanon County, Pennsylvania,  
United States, 17042



Room dimensions

Floor 2 Total sqft: 2682 Living area: 1579

#		Dimensions	sqft	Counted as living area
3	Porch	23'1" x 5'0"	112 sq. ft	No
4	Deck	15'7" x 13'6"	211 sq. ft	No
5	Garage	22'9" x 32'9"	724 sq. ft	No
6	Office	11'10" x 11'5"	123 sq. ft	Yes
7	Dining Room	13'8" x 16'2"	217 sq. ft	Yes
8	Foyer	7'0" x 15'0"	108 sq. ft	Yes
9	Kitchen	13'8" x 16'3"	216 sq. ft	Yes
10	Breakfast Nook	11'2" x 16'6"	172 sq. ft	Yes
11	Living Room	16'1" x 14'2"	226 sq. ft	Yes
12	WC	4'8" x 5'0"	24 sq. ft	Yes
13	Entry	8'4" x 5'9"	39 sq. ft	Yes

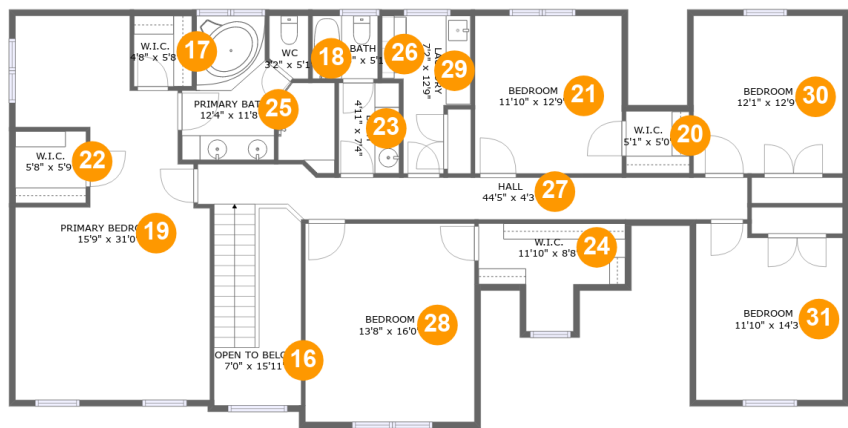
Home report

304 Iron Valley Drive, Cornwall, Lebanon County, Pennsylvania,  
United States, 17042

#		Dimensions	sqft	Counted as living area
14	Family Room	15'9" x 16'10"	269 sq. ft	Yes
15	Hall	8'4" x 8'5"	44 sq. ft	Yes

Home report

304 Iron Valley Drive, Cornwall, Lebanon County, Pennsylvania,  
United States, 17042



Room dimensions

Floor 3 Total sqft: 1998    Living area: 1909

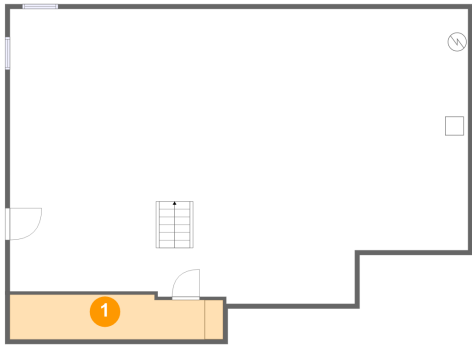
#		Dimensions	sqft	Counted as living area
16	Open To Below	7'0" x 15'11"	70 sq. ft	No
17	W.I.C.	4'8" x 5'8"	27 sq. ft	Yes
18	WC	3'2" x 5'1"	14 sq. ft	Yes
19	Primary Bedroom	15'9" x 31'0"	389 sq. ft	Yes
20	W.I.C.	5'1" x 5'0"	26 sq. ft	Yes
21	Bedroom	11'10" x 12'9"	151 sq. ft	Yes
22	W.I.C.	5'8" x 5'9"	33 sq. ft	Yes
23	Bath	4'11" x 7'4"	36 sq. ft	Yes
24	W.I.C.	11'10" x 8'8"	62 sq. ft	Yes
25	Primary Bath	12'4" x 11'8"	109 sq. ft	Yes
26	Bath	5'3" x 5'1"	27 sq. ft	Yes

## Home report

**304 Iron Valley Drive, Cornwall, Lebanon County, Pennsylvania,  
United States, 17042**

#		Dimensions	sqft	Counted as living area
27	Hall	44'5" x 4'3"	193 sq. ft	Yes
28	Bedroom	13'8" x 16'0"	219 sq. ft	Yes
29	Laundry	7'2" x 12'9"	66 sq. ft	Yes
30	Bedroom	12'1" x 12'9"	153 sq. ft	Yes
31	Bedroom	11'10" x 14'3"	160 sq. ft	Yes

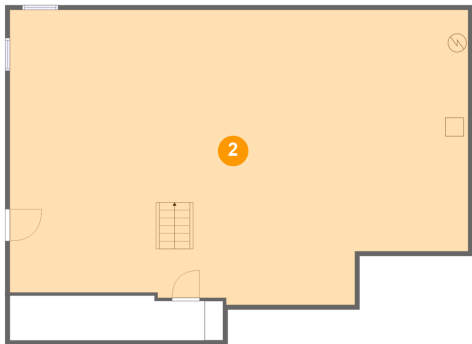
1 Floor 1 - Storage



Dimensions: 22'11" x 4'10"  
Area: 106 sq. ft  
Counted as living area: No

Heated: No  
Finished: No  
Enclosed: No  
Contiguous: Yes  
Permitted: Yes  
Wet space: No  
Addition: No  
Conversion: No

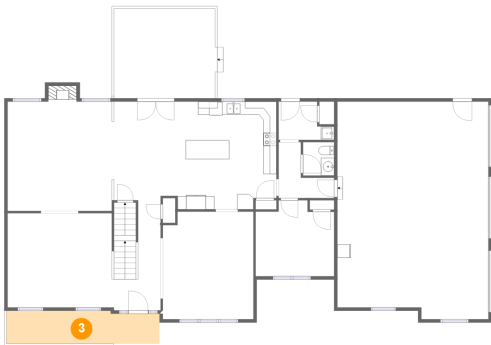
2 Floor 1 - Basement



Dimensions: 49'3" x 31'8"  
Area: 1462 sq. ft  
Counted as living area: No

Heated: Yes  
Finished: No  
Enclosed: Yes  
Contiguous: Yes  
Permitted: Yes  
Wet space: No  
Addition: No  
Conversion: No

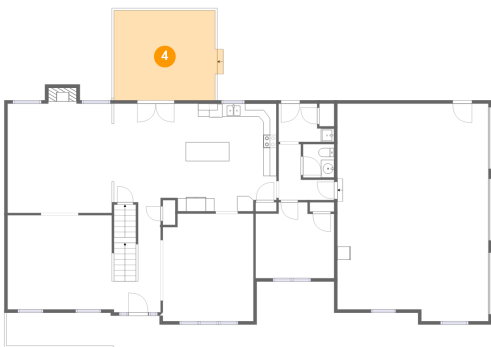
3 Floor 2 - Porch



Dimensions: 23'1" x 5'0"  
Area: 112 sq. ft  
Counted as living area: No

Heated: No  
Finished: Yes  
Enclosed: No  
Contiguous: Yes  
Permitted: Yes  
Wet space: No  
Addition: No  
Conversion: No

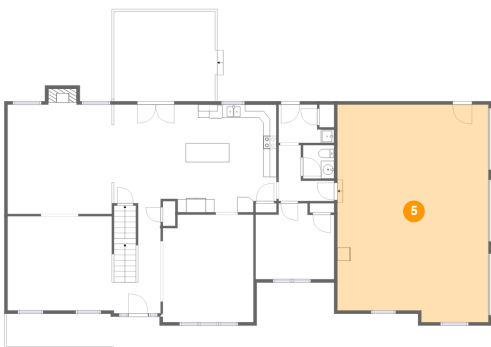
4 Floor 2 - Deck



Dimensions: 15'7" x 13'6"  
Area: 211 sq. ft  
Counted as living area: No

Heated: No  
Finished: Yes  
Enclosed: No  
Contiguous: Yes  
Permitted: Yes  
Wet space: No  
Addition: No  
Conversion: No

5 Floor 2 - Garage

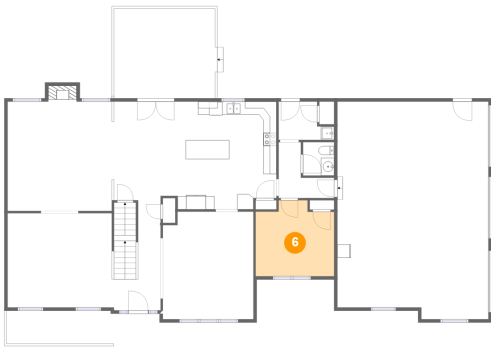


Dimensions: 22'9" x 32'9"  
Area: 724 sq. ft  
Counted as living area: No

Heated: No  
Finished: No  
Enclosed: Yes  
Contiguous: Yes  
Permitted: Yes  
Wet space: No  
Addition: No  
Conversion: No



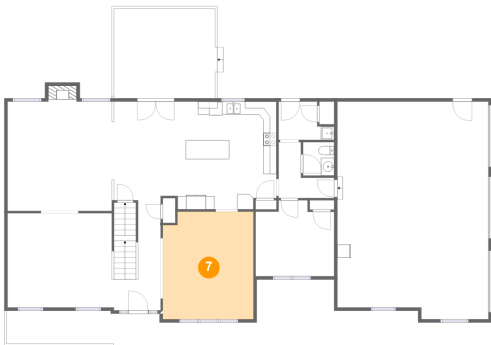
6 Floor 2 - Office



Dimensions: 11'10" x 11'5"  
Area: 123 sq. ft  
Counted as living area: Yes

Heated: Yes  
Finished: Yes  
Enclosed: Yes  
Contiguous: Yes  
Permitted: Yes  
Wet space: No  
Addition: No  
Conversion: No

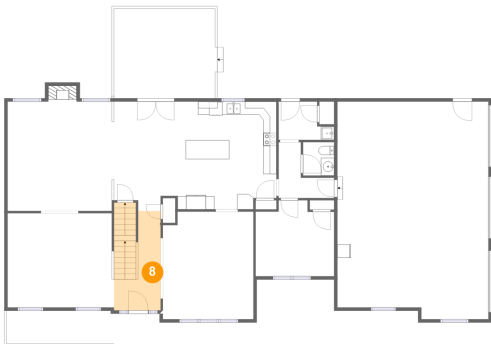
7 Floor 2 - Dining Room



Dimensions: 13'8" x 16'2"  
Area: 217 sq. ft  
Counted as living area: Yes

Heated: Yes  
Finished: Yes  
Enclosed: Yes  
Contiguous: Yes  
Permitted: Yes  
Wet space: No  
Addition: No  
Conversion: No

8 Floor 2 - Foyer

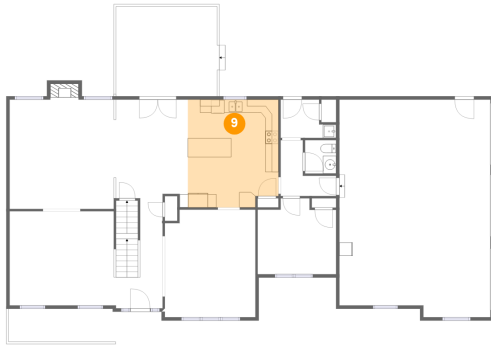


Dimensions: 7'0" x 15'0"  
Area: 108 sq. ft  
Counted as living area: Yes

Heated: Yes  
Finished: Yes  
Enclosed: Yes  
Contiguous: Yes  
Permitted: Yes  
Wet space: No  
Addition: No  
Conversion: No

304 Iron Valley Drive, Cornwall, Lebanon County, Pennsylvania,  
United States, 17042

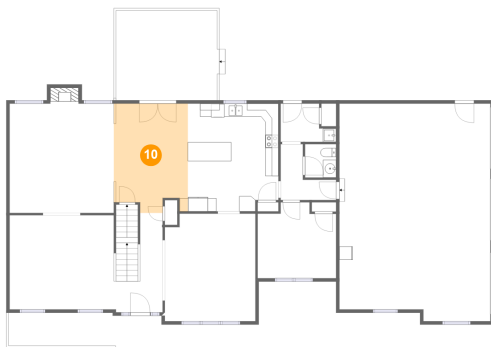
## 9 Floor 2 - Kitchen



Dimensions: 13'8" x 16'3"  
Area: 216 sq. ft  
Counted as living area: Yes

Heated: Yes  
Finished: Yes  
Enclosed: Yes  
Contiguous: Yes  
Permitted: Yes  
Wet space: No  
Addition: No  
Conversion: No

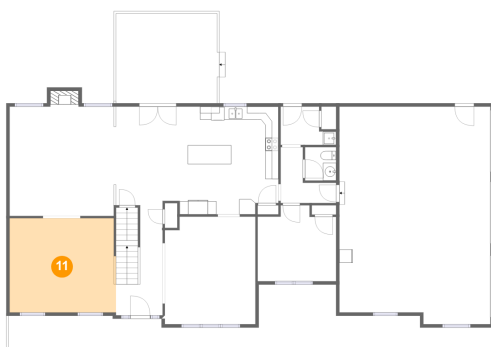
## 10 Floor 2 - Breakfast Nook



Dimensions: 11'2" x 16'6"  
Area: 172 sq. ft  
Counted as living area: Yes

Heated: Yes  
Finished: Yes  
Enclosed: Yes  
Contiguous: Yes  
Permitted: Yes  
Wet space: No  
Addition: No  
Conversion: No

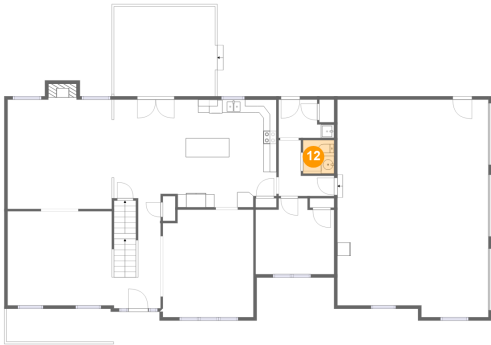
## 11 Floor 2 - Living Room



Dimensions: 16'1" x 14'2"  
Area: 226 sq. ft  
Counted as living area: Yes

Heated: Yes  
Finished: Yes  
Enclosed: Yes  
Contiguous: Yes  
Permitted: Yes  
Wet space: No  
Addition: No  
Conversion: No

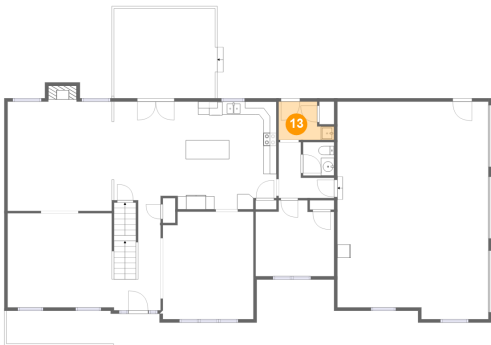
12 Floor 2 - WC



Dimensions: 4'8" x 5'0"  
Area: 24 sq. ft  
Counted as living area: Yes

Heated: Yes  
Finished: Yes  
Enclosed: Yes  
Contiguous: Yes  
Permitted: Yes  
Wet space: Yes  
Addition: No  
Conversion: No

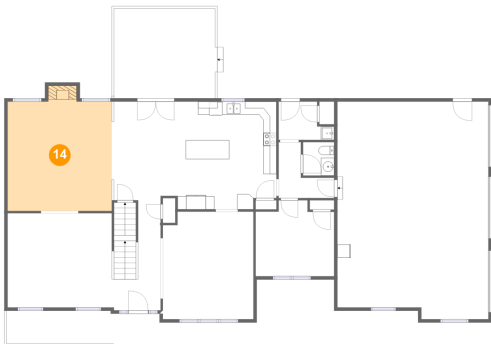
13 Floor 2 - Entry



Dimensions: 8'4" x 5'9"  
Area: 39 sq. ft  
Counted as living area: Yes

Heated: Yes  
Finished: Yes  
Enclosed: Yes  
Contiguous: Yes  
Permitted: Yes  
Wet space: No  
Addition: No  
Conversion: No

14 Floor 2 - Family Room



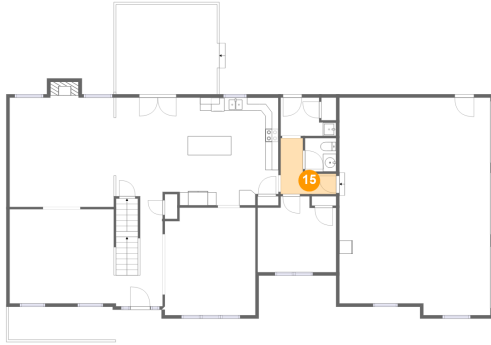
Dimensions: 15'9" x 16'10"  
Area: 269 sq. ft  
Counted as living area: Yes

Heated: Yes  
Finished: Yes  
Enclosed: Yes  
Contiguous: Yes  
Permitted: Yes  
Wet space: No  
Addition: No  
Conversion: No

## Home report

304 Iron Valley Drive, Cornwall, Lebanon County, Pennsylvania,  
United States, 17042

### 15 Floor 2 - Hall



Dimensions: 8'4" x 8'5"  
Area: 44 sq. ft  
Counted as living area: Yes

Heated: Yes  
Finished: Yes  
Enclosed: Yes  
Contiguous: Yes  
Permitted: Yes  
Wet space: No  
Addition: No  
Conversion: No

### 16 Floor 3 - Open To Below



Dimensions: 7'0" x 15'11"  
Area: 70 sq. ft  
Counted as living area: No

Heated: No  
Finished: No  
Enclosed: No  
Contiguous: Yes  
Permitted: No  
Wet space: No  
Addition: No  
Conversion: No

### 17 Floor 3 - W.I.C.



Dimensions: 4'8" x 5'8"  
Area: 27 sq. ft  
Counted as living area: Yes

Heated: Yes  
Finished: Yes  
Enclosed: Yes  
Contiguous: Yes  
Permitted: Yes  
Wet space: No  
Addition: No  
Conversion: No

## Home report

304 Iron Valley Drive, Cornwall, Lebanon County, Pennsylvania,  
United States, 17042

### 18 Floor 3 - WC



Dimensions: 3'2" x 5'1"  
Area: 14 sq. ft  
Counted as living area: Yes

Heated: Yes  
Finished: Yes  
Enclosed: Yes  
Contiguous: Yes  
Permitted: Yes  
Wet space: Yes  
Addition: No  
Conversion: No

### 19 Floor 3 - Primary Bedroom



Dimensions: 15'9" x 31'0"  
Area: 389 sq. ft  
Counted as living area: Yes

Heated: Yes  
Finished: Yes  
Enclosed: Yes  
Contiguous: Yes  
Permitted: Yes  
Wet space: No  
Addition: No  
Conversion: No

### 20 Floor 3 - W.I.C.



Dimensions: 5'1" x 5'0"  
Area: 26 sq. ft  
Counted as living area: Yes

Heated: Yes  
Finished: Yes  
Enclosed: Yes  
Contiguous: Yes  
Permitted: Yes  
Wet space: No  
Addition: No  
Conversion: No

## Home report

304 Iron Valley Drive, Cornwall, Lebanon County, Pennsylvania,  
United States, 17042

### 21 Floor 3 - Bedroom



Dimensions: 11'10" x 12'9"  
Area: 151 sq. ft  
Counted as living area: Yes

Heated: Yes  
Finished: Yes  
Enclosed: Yes  
Contiguous: Yes  
Permitted: Yes  
Wet space: No  
Addition: No  
Conversion: No

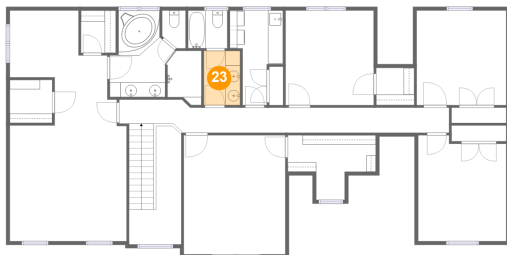
### 22 Floor 3 - W.I.C.



Dimensions: 5'8" x 5'9"  
Area: 33 sq. ft  
Counted as living area: Yes

Heated: Yes  
Finished: Yes  
Enclosed: Yes  
Contiguous: Yes  
Permitted: Yes  
Wet space: No  
Addition: No  
Conversion: No

### 23 Floor 3 - Bath



Dimensions: 4'11" x 7'4"  
Area: 36 sq. ft  
Counted as living area: Yes

Heated: Yes  
Finished: Yes  
Enclosed: Yes  
Contiguous: Yes  
Permitted: Yes  
Wet space: Yes  
Addition: No  
Conversion: No

## Home report

304 Iron Valley Drive, Cornwall, Lebanon County, Pennsylvania,  
United States, 17042

### 24 Floor 3 - W.I.C.



Dimensions: 11'10" x 8'8"  
Area: 62 sq. ft  
Counted as living area: Yes

Heated: Yes  
Finished: Yes  
Enclosed: Yes  
Contiguous: Yes  
Permitted: Yes  
Wet space: No  
Addition: No  
Conversion: No

### 25 Floor 3 - Primary Bath



Dimensions: 12'4" x 11'8"  
Area: 109 sq. ft  
Counted as living area: Yes

Heated: Yes  
Finished: Yes  
Enclosed: Yes  
Contiguous: Yes  
Permitted: Yes  
Wet space: Yes  
Addition: No  
Conversion: No

### 26 Floor 3 - Bath



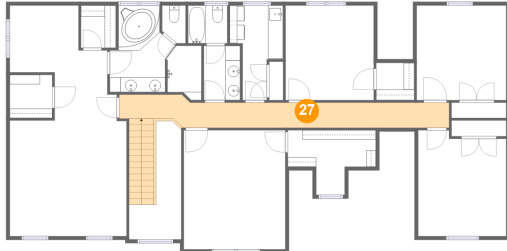
Dimensions: 5'3" x 5'1"  
Area: 27 sq. ft  
Counted as living area: Yes

Heated: Yes  
Finished: Yes  
Enclosed: Yes  
Contiguous: Yes  
Permitted: Yes  
Wet space: Yes  
Addition: No  
Conversion: No

## Home report

304 Iron Valley Drive, Cornwall, Lebanon County, Pennsylvania,  
United States, 17042

### 27 Floor 3 - Hall



Dimensions: 44'5" x 4'3"  
Area: 193 sq. ft  
Counted as living area: Yes

Heated: Yes  
Finished: Yes  
Enclosed: Yes  
Contiguous: Yes  
Permitted: Yes  
Wet space: No  
Addition: No  
Conversion: No

### 28 Floor 3 - Bedroom



Dimensions: 13'8" x 16'0"  
Area: 219 sq. ft  
Counted as living area: Yes

Heated: Yes  
Finished: Yes  
Enclosed: Yes  
Contiguous: Yes  
Permitted: Yes  
Wet space: No  
Addition: No  
Conversion: No

### 29 Floor 3 - Laundry



Dimensions: 7'2" x 12'9"  
Area: 66 sq. ft  
Counted as living area: Yes

Heated: Yes  
Finished: Yes  
Enclosed: Yes  
Contiguous: Yes  
Permitted: Yes  
Wet space: No  
Addition: No  
Conversion: No



30 Floor 3 - Bedroom



Dimensions: 12'1" x 12'9"  
Area: 153 sq. ft  
Counted as living area: Yes

Heated: Yes  
Finished: Yes  
Enclosed: Yes  
Contiguous: Yes  
Permitted: Yes  
Wet space: No  
Addition: No  
Conversion: No

31 Floor 3 - Bedroom



Dimensions: 11'10" x 14'3"  
Area: 160 sq. ft  
Counted as living area: Yes

Heated: Yes  
Finished: Yes  
Enclosed: Yes  
Contiguous: Yes  
Permitted: Yes  
Wet space: No  
Addition: No  
Conversion: No