

RECREATION ROOM
22'5" x 25'2"

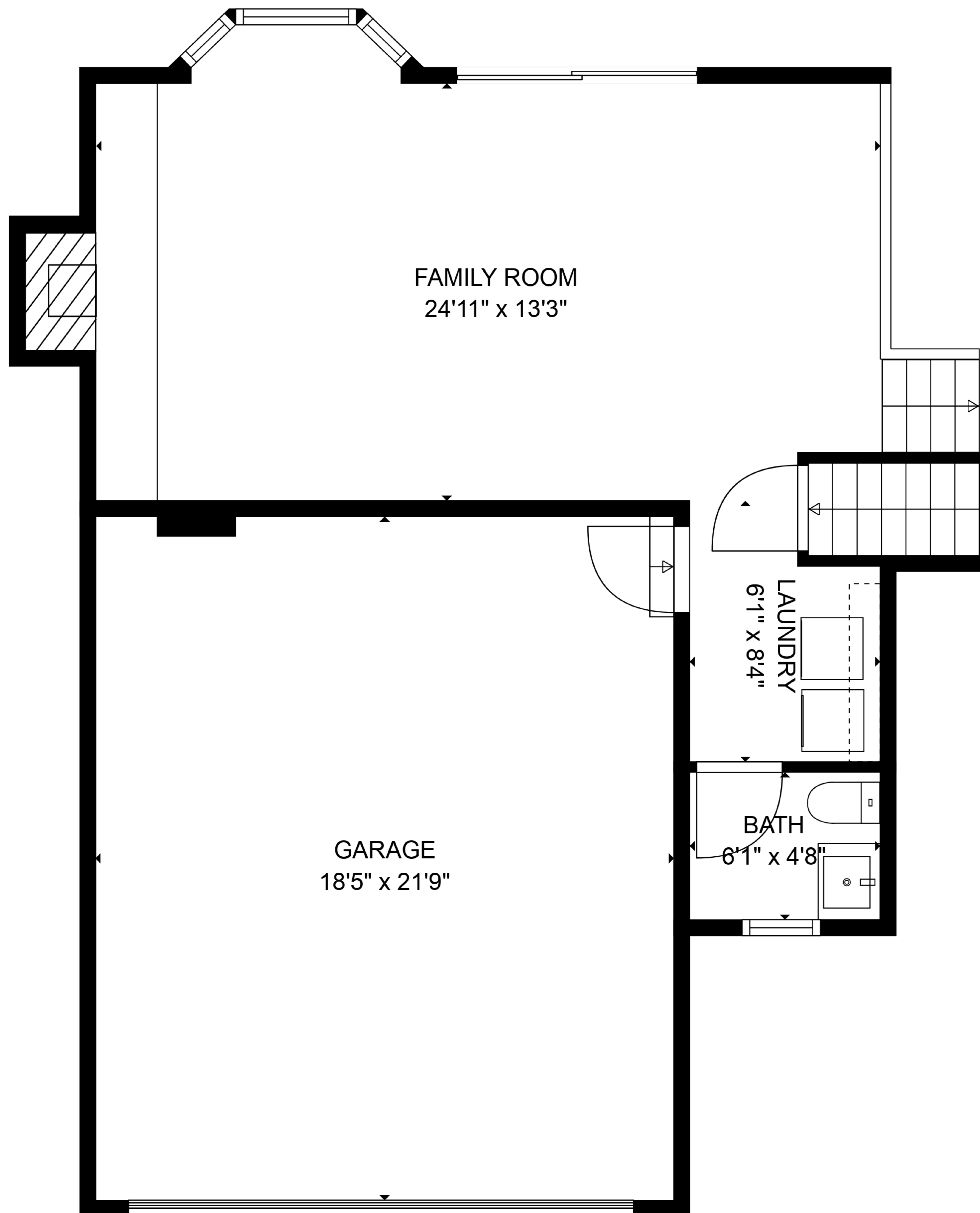
STORAGE
7'2" x 11'9"

ELECTRICAL ROOM
3'9" x 9'10"

TOTAL: 2483 sq. ft

BELOW GROUND: 508 sq. ft, FLOOR 2: 438 sq. ft, FLOOR 3: 629 sq. ft, FLOOR 4: 908 sq. ft
EXCLUDED AREAS: STORAGE: 84 sq. ft, ELECTRICAL ROOM: 37 sq. ft, GARAGE: 400 sq. ft,
BAY WINDOW: 12 sq. ft, FIREPLACE: 11 sq. ft

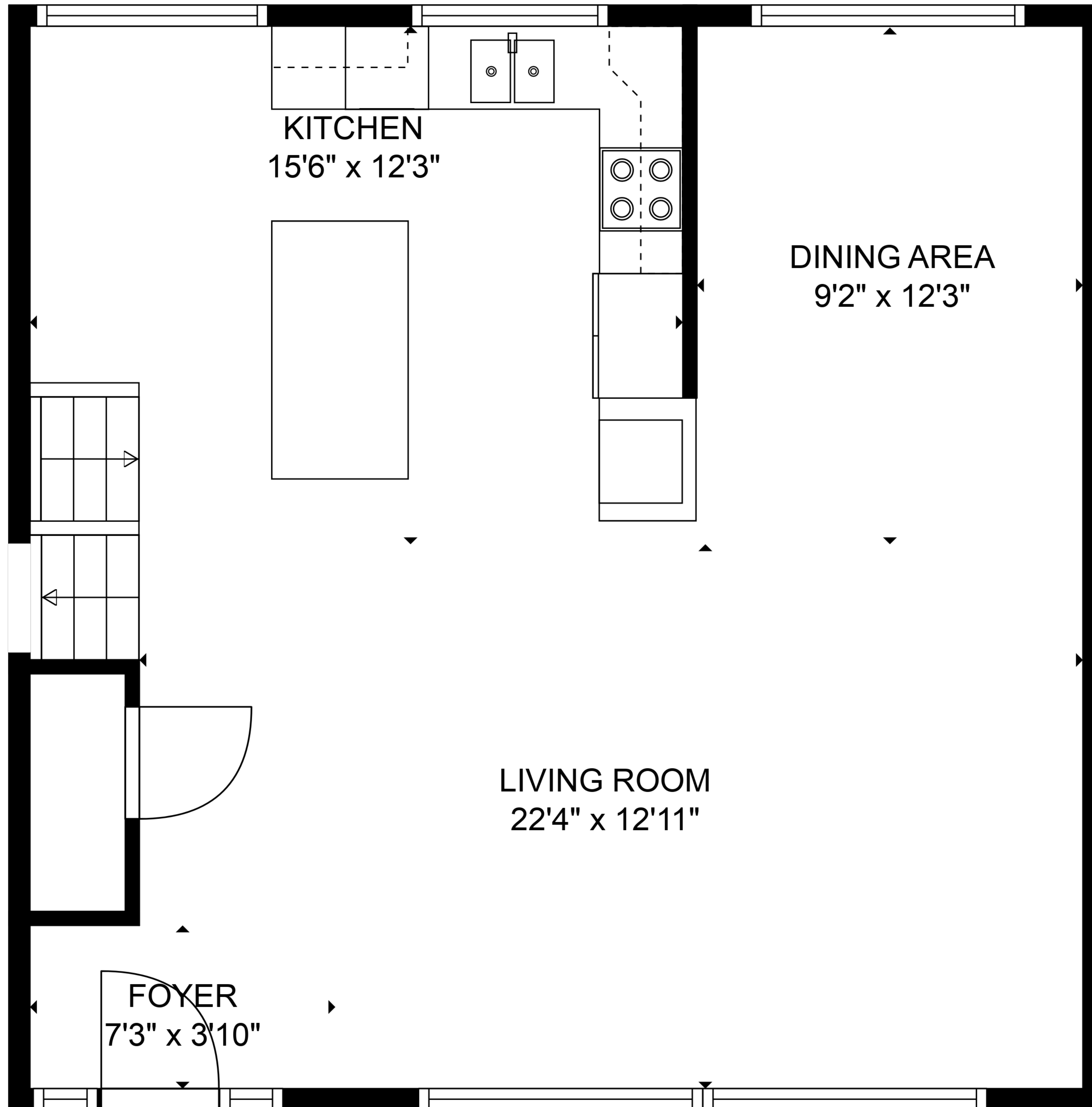
SIZES AND DIMENSIONS ARE APPROXIMATE, ACTUAL MAY VARY.



TOTAL: 2483 sq. ft

BELOW GROUND: 508 sq. ft, FLOOR 2: 438 sq. ft, FLOOR 3: 629 sq. ft, FLOOR 4: 908 sq. ft
EXCLUDED AREAS: STORAGE: 84 sq. ft, ELECTRICAL ROOM: 37 sq. ft, GARAGE: 400 sq. ft,
BAY WINDOW: 12 sq. ft, FIREPLACE: 11 sq. ft

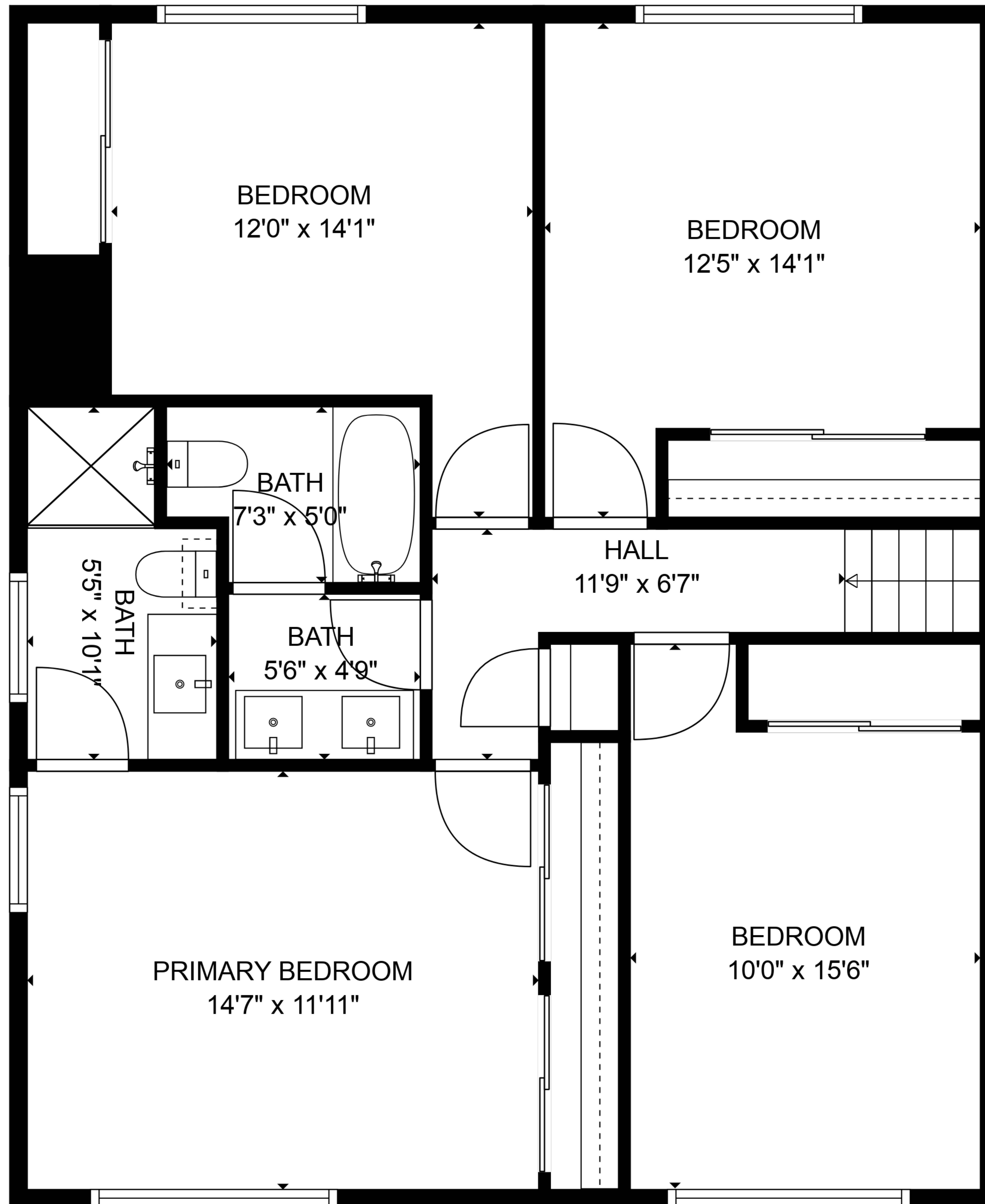
SIZES AND DIMENSIONS ARE APPROXIMATE, ACTUAL MAY VARY.



TOTAL: 2483 sq. ft

BELOW GROUND: 508 sq. ft, FLOOR 2: 438 sq. ft, FLOOR 3: 629 sq. ft, FLOOR 4: 908 sq. ft
EXCLUDED AREAS: STORAGE: 84 sq. ft, ELECTRICAL ROOM: 37 sq. ft, GARAGE: 400 sq. ft,
BAY WINDOW: 12 sq. ft, FIREPLACE: 11 sq. ft

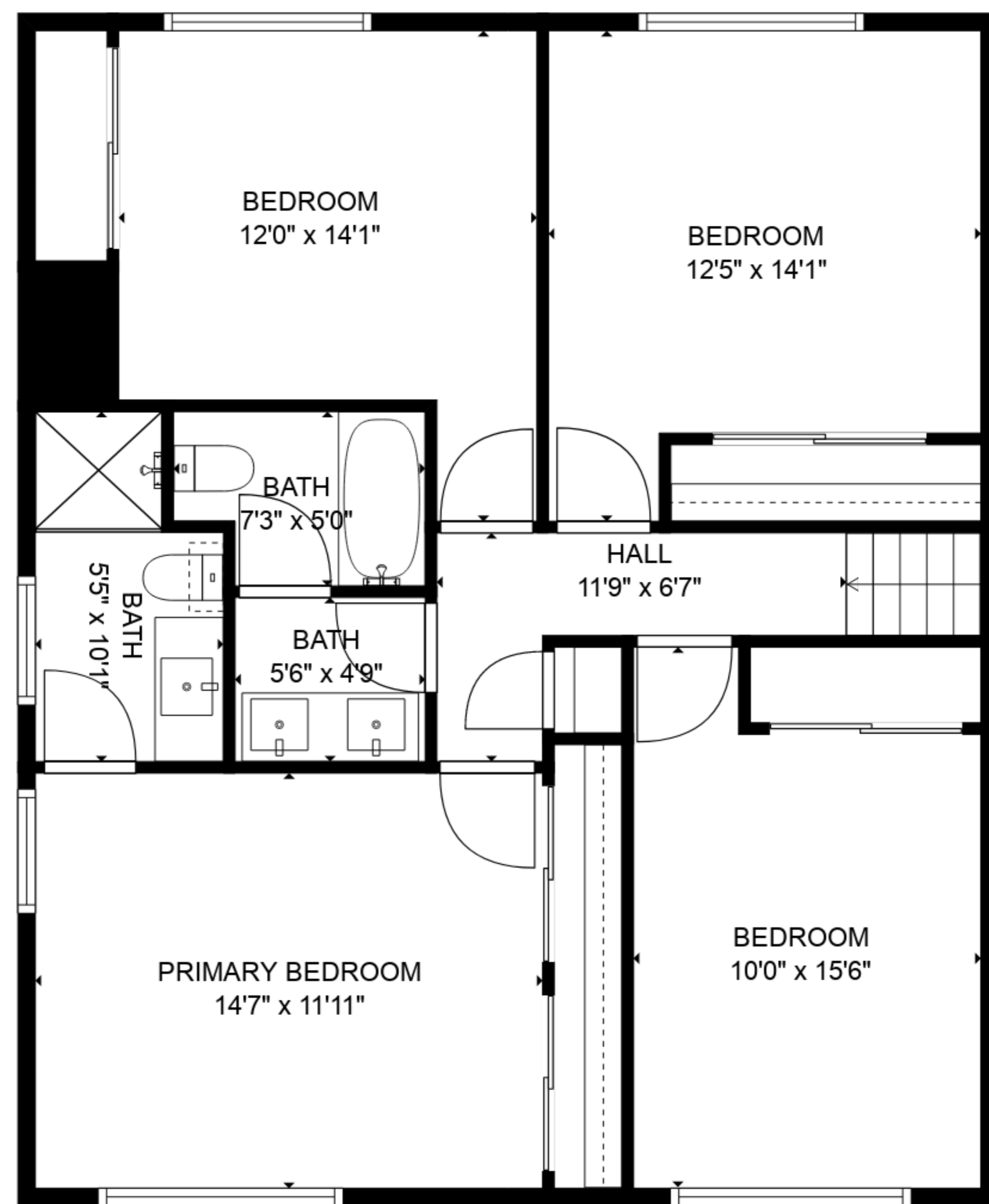
SIZES AND DIMENSIONS ARE APPROXIMATE, ACTUAL MAY VARY.



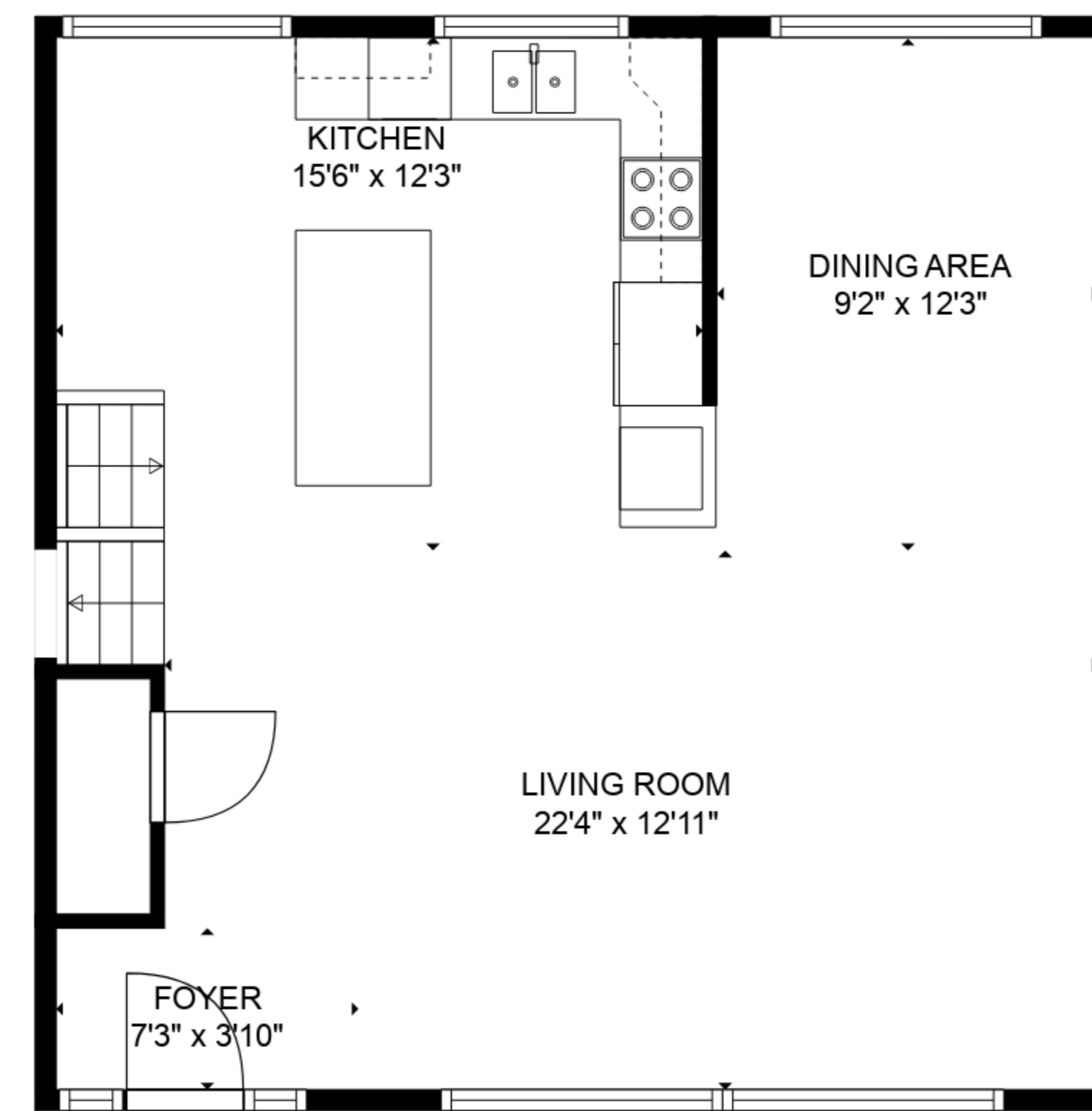
TOTAL: 2483 sq. ft

BELOW GROUND: 508 sq. ft, FLOOR 2: 438 sq. ft, FLOOR 3: 629 sq. ft, FLOOR 4: 908 sq. ft
 EXCLUDED AREAS: STORAGE: 84 sq. ft, ELECTRICAL ROOM: 37 sq. ft, GARAGE: 400 sq. ft,
 BAY WINDOW: 12 sq. ft, FIREPLACE: 11 sq. ft

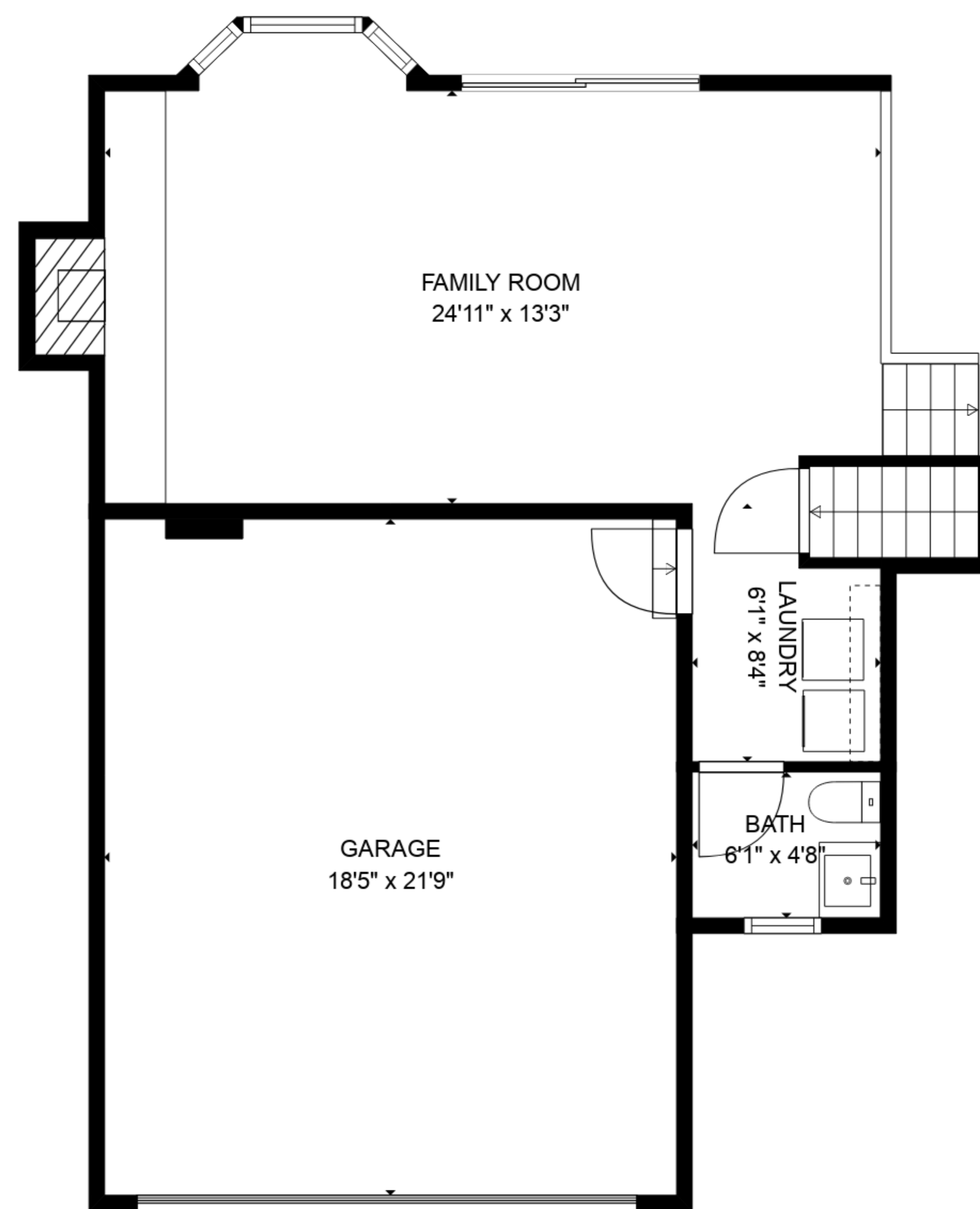
SIZES AND DIMENSIONS ARE APPROXIMATE, ACTUAL MAY VARY.



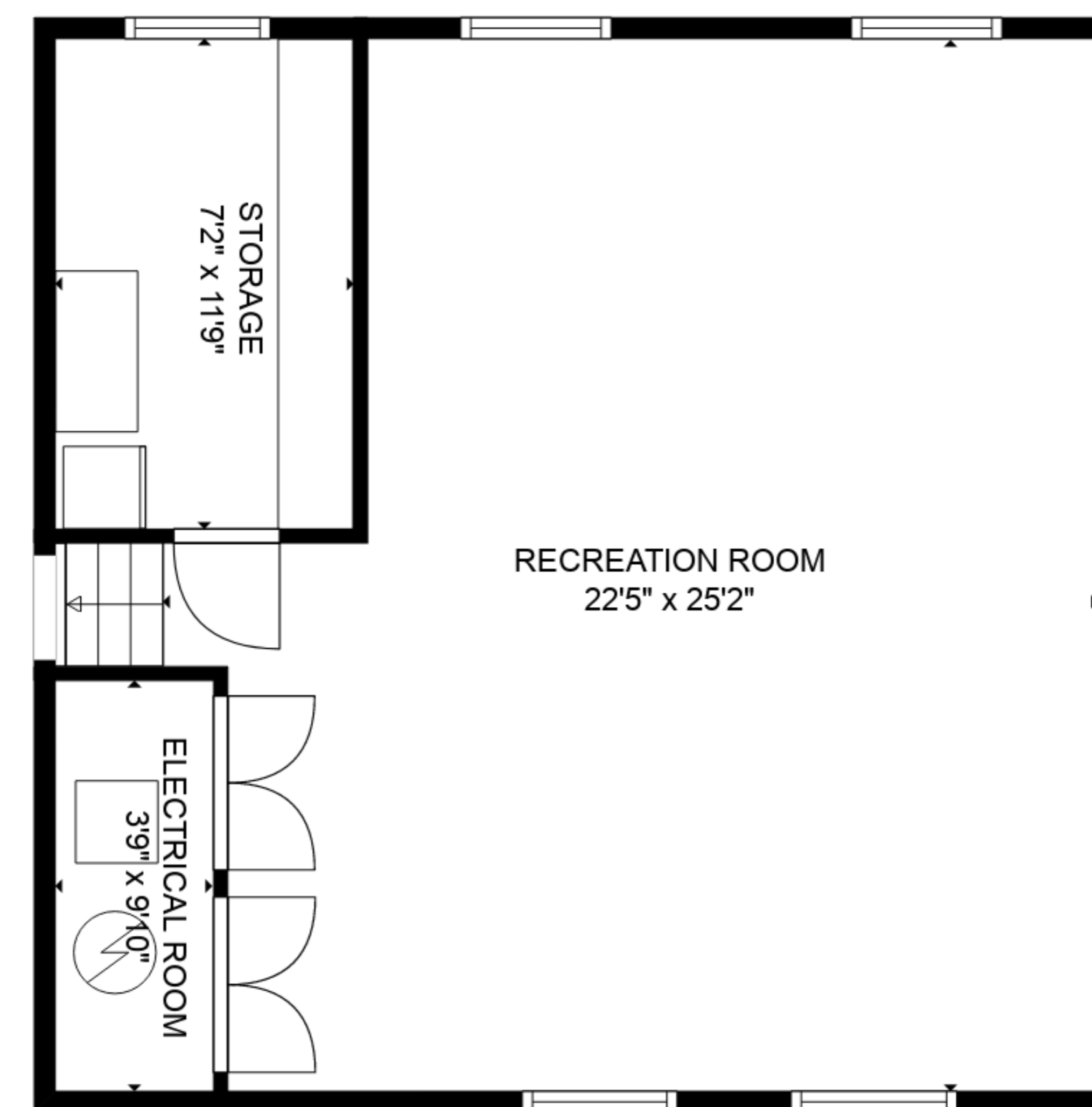
FLOOR 4



FLOOR 3



FLOOR 2



FLOOR 1

TOTAL: 2483 sq. ft

BELOW GROUND: 508 sq. ft, FLOOR 2: 438 sq. ft, FLOOR 3: 629 sq. ft, FLOOR 4: 908 sq. ft
 EXCLUDED AREAS: STORAGE: 84 sq. ft, ELECTRICAL ROOM: 37 sq. ft, GARAGE: 400 sq. ft,
 BAY WINDOW: 12 sq. ft, FIREPLACE: 11 sq. ft

SIZES AND DIMENSIONS ARE APPROXIMATE, ACTUAL MAY VARY.