

# 502 County Rd 900 E, Tolono, IL, US



## Property summary


 **1** Garages

 **5** Bedrooms

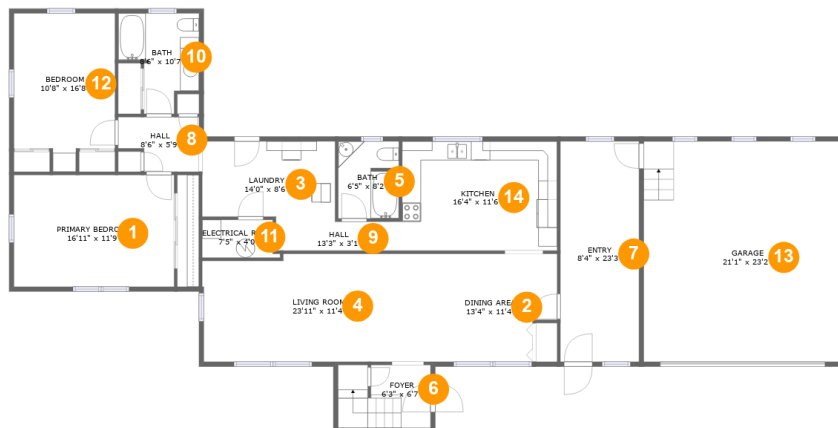
 **2** Bathrooms

 **1** Half baths

 **2** Floors

 **2,161** Gross living area sqft

 **3,340** Total sqft

**502 County Rd 900 E, Tolono, IL, US****Room dimensions**

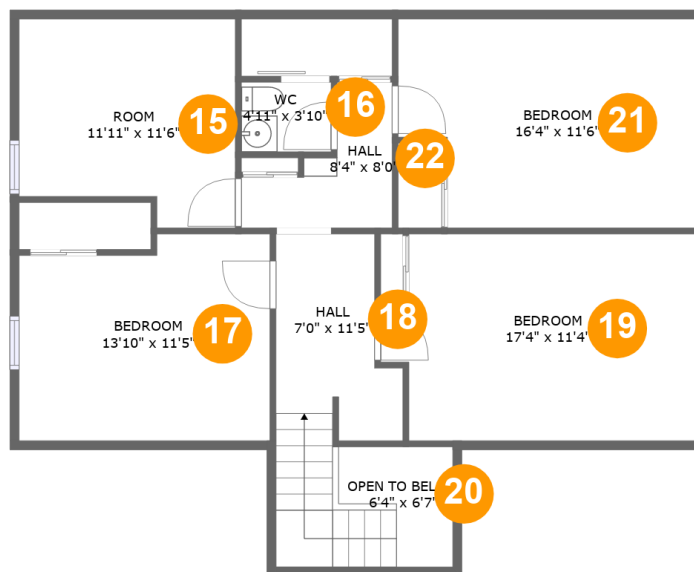
Floor 1

Total sqft: 2338 Living area: 1784

#		Dimensions	sqft	Counted as living area
1	Bedroom	16'11" x 11'9"	199 sq. ft	Yes
2	Dining Room	13'4" x 11'4"	141 sq. ft	Yes
3	Utility	14'0" x 8'6"	114 sq. ft	Yes
4	Living Room	23'11" x 11'4"	266 sq. ft	Yes
5	Bath	6'5" x 8'2"	51 sq. ft	Yes
6	Entry	6'3" x 6'7"	32 sq. ft	Yes
7	Entry	8'4" x 23'3"	193 sq. ft	Yes
8	Hall	8'6" x 5'9"	42 sq. ft	Yes
9	Hall	13'3" x 3'1"	40 sq. ft	Yes
10	Bath	8'6" x 10'7"	68 sq. ft	Yes
11	Room	7'5" x 4'0"	30 sq. ft	No

# 502 County Rd 900 E, Tolono, IL, US

#		Dimensions	sqft	Counted as living area
12	Bedroom	10'8" x 16'8"	158 sq. ft	Yes
13	Garage	21'1" x 23'2"	491 sq. ft	No
14	Kitchen	16'4" x 11'6"	188 sq. ft	Yes

**502 County Rd 900 E, Tolono, IL, US****Room dimensions**

Floor 2

Total sqft: 1002 Living area: 377

#		Dimensions	sqft	Counted as living area
15	Room	11'11" x 11'6"	105 sq. ft	No
16	Bath	4'11" x 3'10"	19 sq. ft	Yes
17	Bedroom	13'10" x 11'5"	131 sq. ft	Yes
18	Hall	7'0" x 11'5"	98 sq. ft	Yes
19	Bedroom	17'4" x 11'4"	164 sq. ft	No
20	Open To Below	6'4" x 6'7"	31 sq. ft	No
21	Bedroom	16'4" x 11'6"	149 sq. ft	No
22	Hall	8'4" x 8'0"	41 sq. ft	Yes

# 502 County Rd 900 E, Tolono, IL, US

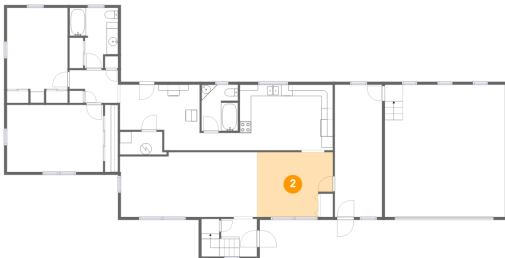
## 1 Floor 1 - Bedroom



**Dimensions:** 16'11" x 11'9"  
**Area:** 199 sq. ft  
**Counted as living area:** Yes

**Heated:** Yes  
**Finished:** Yes  
**Enclosed:** Yes  
**Contiguous:** Yes  
**Permitted:** Yes  
**Wet space:** No  
**Addition:** No  
**Conversion:** No

## 2 Floor 1 - Dining Room

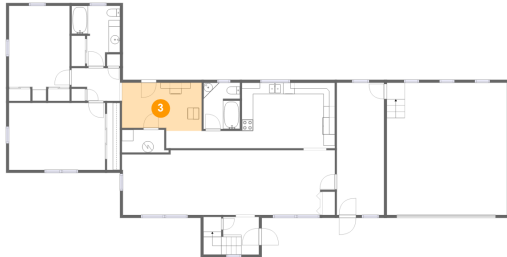


**Dimensions:** 13'4" x 11'4"  
**Area:** 141 sq. ft  
**Counted as living area:** Yes

**Heated:** Yes  
**Finished:** Yes  
**Enclosed:** Yes  
**Contiguous:** Yes  
**Permitted:** Yes  
**Wet space:** No  
**Addition:** No  
**Conversion:** No

# 502 County Rd 900 E, Tolono, IL, US

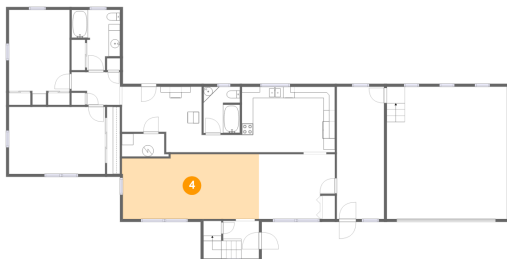
## 3 Floor 1 - Utility



Dimensions: 14'0" x 8'6"  
Area: 114 sq. ft  
Counted as living area: Yes

Heated: Yes  
Finished: Yes  
Enclosed: Yes  
Contiguous: Yes  
Permitted: Yes  
Wet space: No  
Addition: No  
Conversion: No

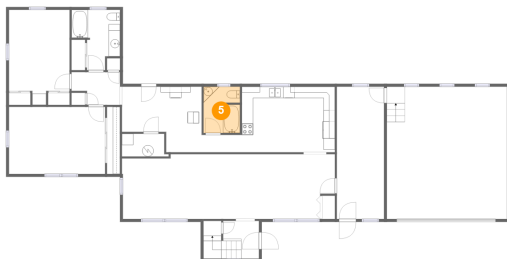
## 4 Floor 1 - Living Room



Dimensions: 23'11" x 11'4"  
Area: 266 sq. ft  
Counted as living area: Yes

Heated: Yes  
Finished: Yes  
Enclosed: Yes  
Contiguous: Yes  
Permitted: Yes  
Wet space: No  
Addition: No  
Conversion: No

## 5 Floor 1 - Bath

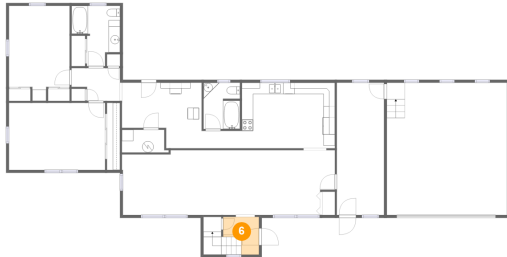


Dimensions: 6'5" x 8'2"  
Area: 51 sq. ft  
Counted as living area: Yes

Heated: Yes  
Finished: Yes  
Enclosed: Yes  
Contiguous: Yes  
Permitted: Yes  
Wet space: Yes  
Addition: No  
Conversion: No

# 502 County Rd 900 E, Tolono, IL, US

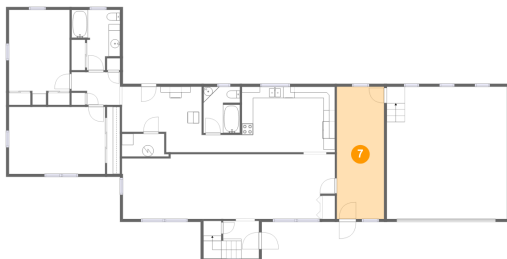
## 6 Floor 1 - Entry



Dimensions: 6'3" x 6'7"  
Area: 32 sq. ft  
Counted as living area: Yes

Heated: Yes  
Finished: Yes  
Enclosed: Yes  
Contiguous: Yes  
Permitted: Yes  
Wet space: No  
Addition: No  
Conversion: No

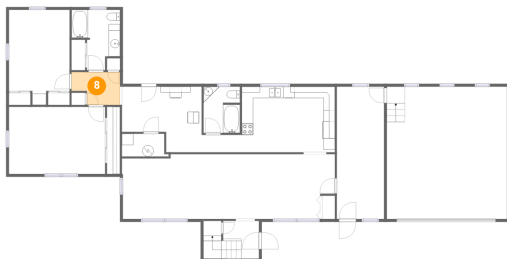
## 7 Floor 1 - Entry



Dimensions: 8'4" x 23'3"  
Area: 193 sq. ft  
Counted as living area: Yes

Heated: Yes  
Finished: Yes  
Enclosed: Yes  
Contiguous: Yes  
Permitted: Yes  
Wet space: No  
Addition: No  
Conversion: No

## 8 Floor 1 - Hall

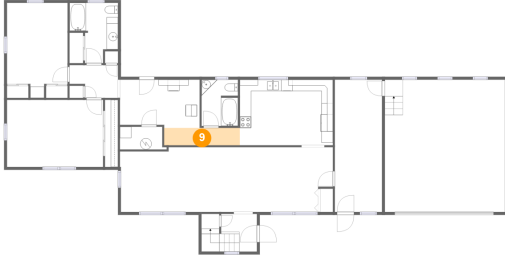


Dimensions: 8'6" x 5'9"  
Area: 42 sq. ft  
Counted as living area: Yes

Heated: Yes  
Finished: Yes  
Enclosed: Yes  
Contiguous: Yes  
Permitted: Yes  
Wet space: No  
Addition: No  
Conversion: No

# 502 County Rd 900 E, Tolono, IL, US

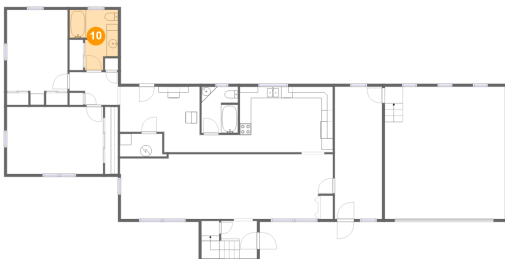
## 9 Floor 1 - Hall



Dimensions: 13'3" x 3'1"  
Area: 40 sq. ft  
Counted as living area: Yes

Heated: Yes  
Finished: Yes  
Enclosed: Yes  
Contiguous: Yes  
Permitted: Yes  
Wet space: No  
Addition: No  
Conversion: No

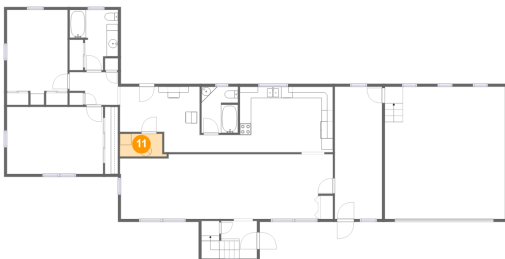
## 10 Floor 1 - Bath



Dimensions: 8'6" x 10'7"  
Area: 68 sq. ft  
Counted as living area: Yes

Heated: Yes  
Finished: Yes  
Enclosed: Yes  
Contiguous: Yes  
Permitted: Yes  
Wet space: Yes  
Addition: No  
Conversion: No

## 11 Floor 1 - Room



Dimensions: 7'5" x 4'0"  
Area: 30 sq. ft  
Counted as living area: No

Heated: Yes  
Finished: No  
Enclosed: Yes  
Contiguous: Yes  
Permitted: Yes  
Wet space: No  
Addition: No  
Conversion: No



# 502 County Rd 900 E, Tolono, IL, US

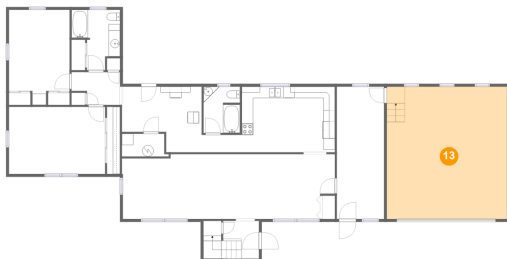
## 12 Floor 1 - Bedroom



Dimensions: 10'8" x 16'8"  
Area: 158 sq. ft  
Counted as living area: Yes

Heated: Yes  
Finished: Yes  
Enclosed: Yes  
Contiguous: Yes  
Permitted: Yes  
Wet space: No  
Addition: No  
Conversion: No

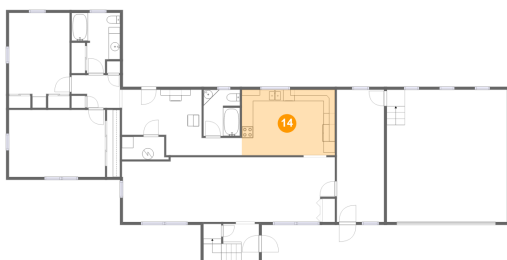
## 13 Floor 1 - Garage



Dimensions: 21'1" x 23'2"  
Area: 491 sq. ft  
Counted as living area: No

Heated: No  
Finished: No  
Enclosed: Yes  
Contiguous: Yes  
Permitted: Yes  
Wet space: No  
Addition: No  
Conversion: No

## 14 Floor 1 - Kitchen

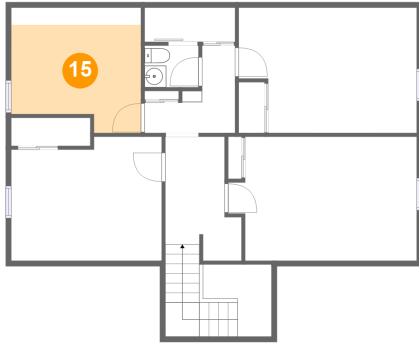


Dimensions: 16'4" x 11'6"  
Area: 188 sq. ft  
Counted as living area: Yes

Heated: Yes  
Finished: Yes  
Enclosed: Yes  
Contiguous: Yes  
Permitted: Yes  
Wet space: No  
Addition: No  
Conversion: No

# 502 County Rd 900 E, Tolono, IL, US

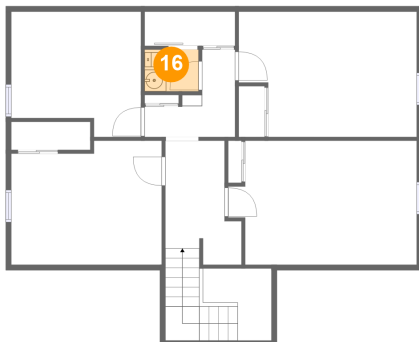
## 15 Floor 2 - Room



**Dimensions:** 11'11" x 11'6"  
**Area:** 105 sq. ft  
**Counted as living area:** No

**Heated:** Yes  
**Finished:** Yes  
**Enclosed:** Yes  
**Contiguous:** Yes  
**Permitted:** Yes  
**Wet space:** No  
**Addition:** No  
**Conversion:** No

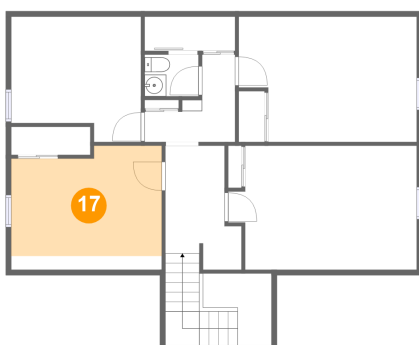
## 16 Floor 2 - Bath



**Dimensions:** 4'11" x 3'10"  
**Area:** 19 sq. ft  
**Counted as living area:** Yes

**Heated:** Yes  
**Finished:** Yes  
**Enclosed:** Yes  
**Contiguous:** Yes  
**Permitted:** Yes  
**Wet space:** Yes  
**Addition:** No  
**Conversion:** No

## 17 Floor 2 - Bedroom

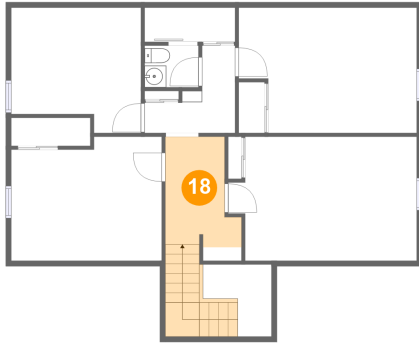


**Dimensions:** 13'10" x 11'5"  
**Area:** 131 sq. ft  
**Counted as living area:** Yes

**Heated:** Yes  
**Finished:** Yes  
**Enclosed:** Yes  
**Contiguous:** Yes  
**Permitted:** Yes  
**Wet space:** No  
**Addition:** No  
**Conversion:** No

# 502 County Rd 900 E, Tolono, IL, US

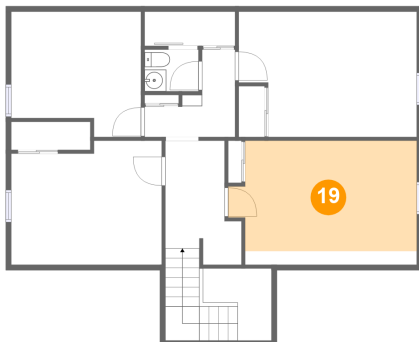
## 18 Floor 2 - Hall



Dimensions: 7'0" x 11'5"  
Area: 98 sq. ft  
Counted as living area: Yes

Heated: Yes  
Finished: Yes  
Enclosed: Yes  
Contiguous: Yes  
Permitted: Yes  
Wet space: No  
Addition: No  
Conversion: No

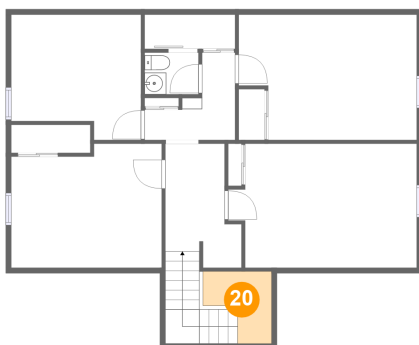
## 19 Floor 2 - Bedroom



Dimensions: 17'4" x 11'4"  
Area: 164 sq. ft  
Counted as living area: No

Heated: Yes  
Finished: Yes  
Enclosed: Yes  
Contiguous: Yes  
Permitted: Yes  
Wet space: No  
Addition: No  
Conversion: No

## 20 Floor 2 - Open To Below

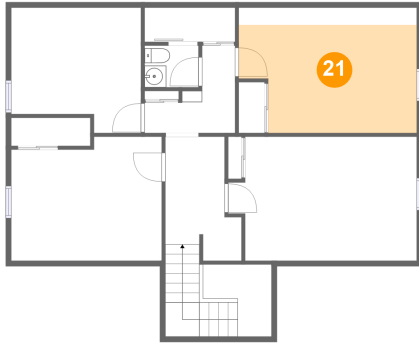


Dimensions: 6'4" x 6'7"  
Area: 31 sq. ft  
Counted as living area: No

Heated: No  
Finished: No  
Enclosed: No  
Contiguous: Yes  
Permitted: No  
Wet space: No  
Addition: No  
Conversion: No

# 502 County Rd 900 E, Tolono, IL, US

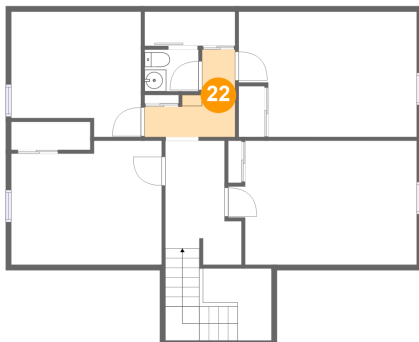
## 21 Floor 2 - Bedroom



**Dimensions:** 16'4" x 11'6"  
**Area:** 149 sq. ft  
**Counted as living area:** No

**Heated:** Yes  
**Finished:** Yes  
**Enclosed:** Yes  
**Contiguous:** Yes  
**Permitted:** Yes  
**Wet space:** No  
**Addition:** No  
**Conversion:** No

## 22 Floor 2 - Hall



**Dimensions:** 8'4" x 8'0"  
**Area:** 41 sq. ft  
**Counted as living area:** Yes

**Heated:** Yes  
**Finished:** Yes  
**Enclosed:** Yes  
**Contiguous:** Yes  
**Permitted:** Yes  
**Wet space:** No  
**Addition:** No  
**Conversion:** No